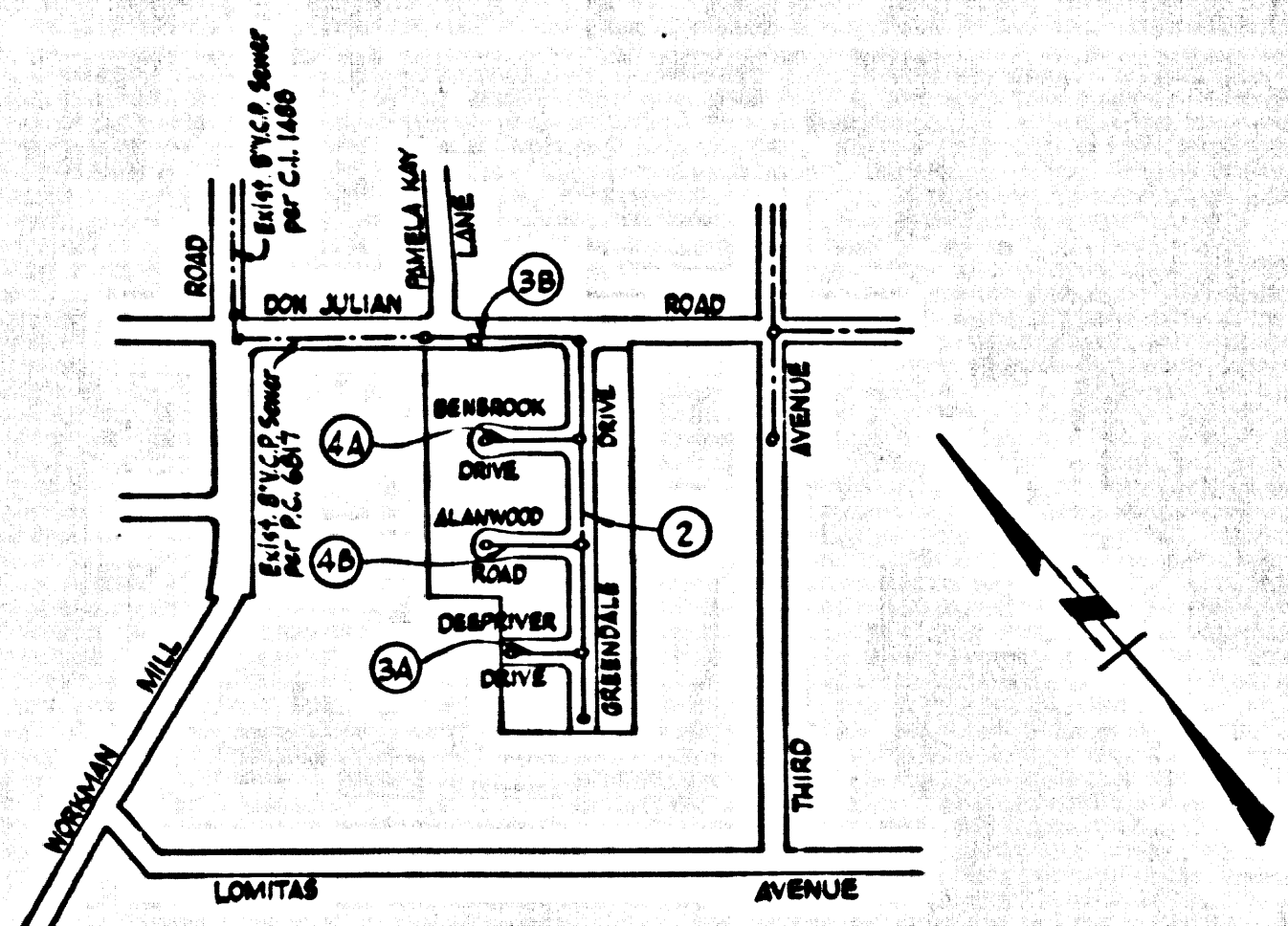


B.M. BG 2305 ELEV. 301.868
 ROUND HEAD SIGN NEAR NORTH EDGE OF CONC.
 DRIVE TO HOUSE #3544 DON JULIAN ROAD, 35' S.
 50' OF AND 200' N. OF 4 INT. DON JULIAN ROAD
 # 2nd LINE (NORMAN HILL RD) MARKED 1:2:1.
 BASE LINE QUAD. 19 65



INDEX MAP
 TRACT NO. 26778
 SCALE: 1"=60'

REVISION 5-31-1967
 LOWERED GRADES ON PAGE 3, AND STA.
 5+37.00 TO 5+70.00, PAGE 2
 APPROVED: *[Signature]*
 OFFICE OF COUNTY ENGINEER R.C.E. 10443

C. IF THE RELATIVE DENSITY OF COMPACTIION IS LESS THAN 90% ALL MAIN LINE AND HOUSE LATERALS SHALL BE GRADED PER 5-23 OR HAVE A SPECIAL BASE COURSE PER 5-21. SPECIAL MAINLINE BASES PER 5-24 ARE REQUIRED.
 D. IF THE RELATIVE DENSITY OF COMPACTIION IS 90% OR GREATER, THE SPECIAL PROVISIONS IN "C" ARE NOT REQUIRED.

NO CONNECTIONS FOR THE DISPOSAL OF INDUSTRIAL WASTES SHALL BE MADE TO SEWERS SHOWN ON THESE DRAWINGS WITHOUT WRITTEN PERMISSION FROM THE CHIEF ENGINEER AND GENERAL MANAGER OF THE COUNTY SANITATION DISTRICTS.

LA PUENTE BLDG. DIST. NO. 2

- PROVIDE STAKES ON THE PROPERTY LINE OR PROPERTY LINES PRODUCED AT RIGHT ANGLES TO THE SEWER LINE AT THE CENTER LINE OF EACH MANHOLE.
- NO REPRESENTATIVE OF THE COUNTY ENGINEER WILL SURVEY OR LAY OUT ANY PORTION OF THE WORK.
- THE PRIVATE ENGINEER SHALL FURNISH THE COUNTY ENGINEER WITH GRADE SHEETS AND STATIONING FOR ALL HOUSE LATERALS AND "T" BRANCHES AND SHALL PROVIDE STAKES FOR THEM AT THEIR PROPER LOCATIONS WITH STATIONING PLAINLY MARKED. ALL HOUSE LATERALS SHALL BE CONSTRUCTED IN A STRAIGHT ALIGNMENT AT RIGHT ANGLES FROM THE MAIN LINE SEWER EXCEPT AS SHOWN ON THE PLANS. HOUSE LATERALS FROM CHIMNEYS SHALL NOT HAVE AN ANGLE OF LESS THAN 45° WITH THE MAIN LINE SEWER. ANY CHANGE IN ALIGNMENT SHALL BE REQUESTED IN WRITING BY THE PRIVATE ENGINEER.
- THE PRIVATE ENGINEER SHALL FURNISH THE HOUSE LATERAL DEPTH AT THE PROPERTY LINE BELOW THE TOP OF CURB ELEVATION FOR EACH HOUSE LATERAL ON THE GRADE SHEET.
- NO REVISIONS SHALL BE MADE IN THESE PLANS WITHOUT THE APPROVAL OF THE COUNTY ENGINEER.
- THE CONTRACTOR SHALL NOTIFY THE CONSTRUCTION DIVISION BY TELEPHONE, MADISON 9-4747, EXT. 81581, AT LEAST TWENTY-FOUR HOURS BEFORE STARTING ANY WORK UNDER THIS CONTRACT.
- MANHOLES SHALL BE BRICK SEWER STRUCTURES PER S.A. PRECAST CONCRETE MANHOLES PER 5-4 OR 5-6 MAY BE USED AS AN ALTERNATE IN LOCATIONS APPROVED BY THE COUNTY ENGINEER.
- USE STANDARD MANHOLE FRAMES AND COVERS, 5-18, EXCEPT AS NOTED.
- MANHOLE TOPS IN UNIMPROVED RIGHTS-OF-WAY TO BE 22 INCHES ABOVE FINISHED GRADE.
- USE EXTRA STRENGTH PIPE. ALL PIPE IS STANDARD DEPTH EXCEPT AS NOTED.
- USE MECHANICAL COMPRESSION JOINTS FOR ALL V.C.P. JOINTS PER SPECS., SECS. 36, 48 & 49.
- IF A POWER POLE IS WITHIN THREE FEET OF THE SEWER, THE SEWER SHALL BE ENCASED, PER 5-23, TWO FEET ON EACH SIDE FROM THE POINT OF INTERFERENCE.
- IN BARRING THE COURSE OF CONSTRUCTION IT IS DETERMINED THAT THERE IS LESS THAN FOUR FEET OF COVER OVER THE TOP OF A MAIN LINE OR HOUSE LATERAL V.C.P. SEWER WHICH IS NOT INDICATED ON THE PLANS, THE PIPE SHALL BE ENCASED PER 5-23, UNLESS OTHERWISE APPROVED BY THE COUNTY ENGINEER.
- HOUSE LATERALS TO BE CONSTRUCTED WITH INVERTS AT PROPERTY LINE 4 FEET BELOW CURB GRADE EXCEPT AS NOTED.
- RESURFACE ALL TRENCHES WITHIN PAVED AREAS TO MEET L.A. COUNTY ROAD DEPT. OR CALIFORNIA STATE HIGHWAY REQUIREMENTS IN ACCORDANCE WITH PERMITS.
- FOR ALLOWABLE LEAKAGE TEST USE FORMULA NO. 2, SPEC. 2, SEC. 34.
- ALL STATE AND LOCAL TRENCH SAFETY ORDERS WILL BE STRICTLY ENFORCED.
- ALL FILL TO BE IN PLACE PRIOR TO STARTING SEWER CONSTRUCTION.

CONSTRUCTION IN FILLED AREAS:
 a. AN ACCEPTABLE CERTIFICATION OF COMPACTIION TESTS RESULTS SHALL BE SUBMITTED TO THE CONSTRUCTION DIVISION. CONTRACTOR TESTS ARE TO BE MADE IN ACCORDANCE WITH A.S.T.M. STANDARD METHOD "D" TEST D-598-58T.
 b. NO CONSTRUCTION IS PERMITTED IN THE FILLED AREAS WHERE THE RELATIVE DENSITY OF COMPACTIION IS LESS THAN 90%.
 c. IF THE RELATIVE DENSITY OF COMPACTIION IS LESS THAN 90% ALL MAIN LINE AND HOUSE LATERALS SHALL BE GRADED PER 5-23 OR HAVE A SPECIAL BASE COURSE PER 5-21. SPECIAL MAINLINE BASES PER 5-24 ARE REQUIRED.
 d. IF THE RELATIVE DENSITY OF COMPACTIION IS 90% OR GREATER, THE SPECIAL PROVISIONS IN "C" ARE NOT REQUIRED.

COLLECT CHARGES AS INDICATED
D. R. Olson 11-16-66

NOTICE TO CONTRACTOR
 The existence and location of any underground utility pipes or structures shown on these plans are obtained by a search of the available records. To the best of my knowledge there are no missing utilities except as shown on these plans. The contractor is required to take all precautionary measures to protect the utility lines shown and any other lines not of record or not shown on these plans.
Clark M. Leonard R.C.E. 10447

PROFILE, ALIGNMENT AND GRADE OF P.C. 7726
 SANITARY SEWERS PAGE 1

CONSTRUCTED IN TRACT NO. 26778

PRIVATE CONTRACT NO. 7726

W.S. 37
 2 SHEETS, 4 PAGES
 SCALE: VERT. 1"=4' HORIZ. 1"=40' SEPTEMBER, 1966
 38994

PREPARED IN THE OFFICES OF LANCOS ENGINEERING

By: *Clark M. Leonard*
 REG. C. E. NO. 13167

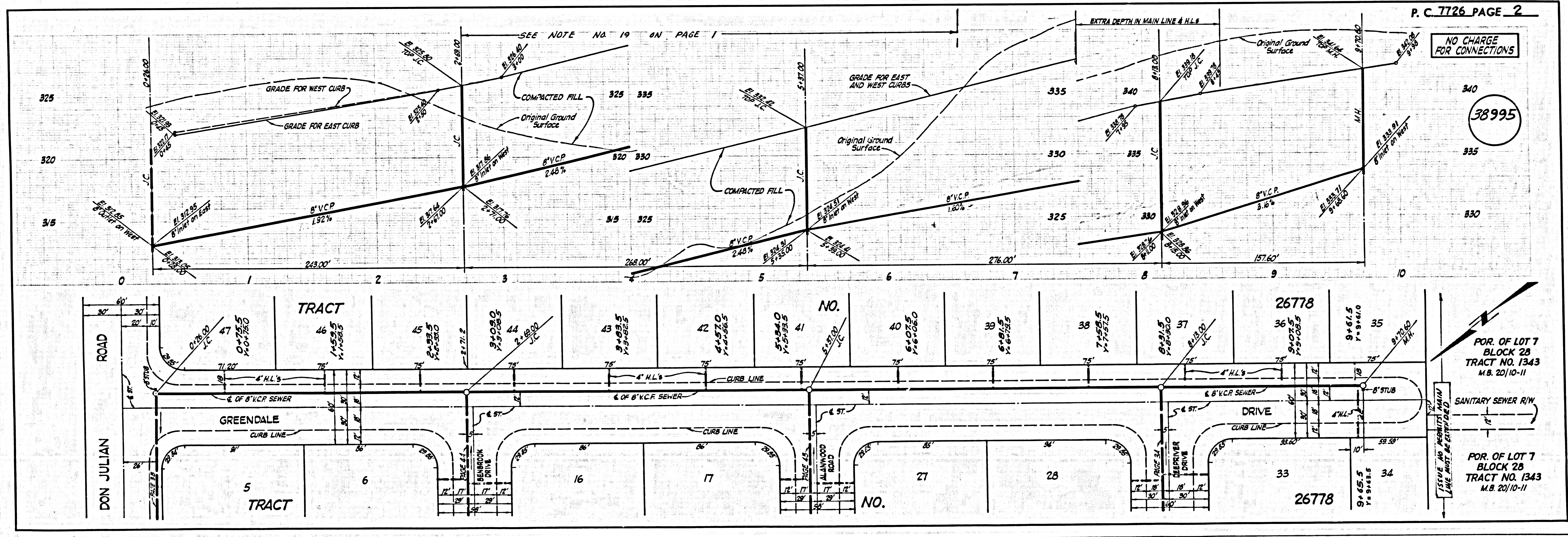
FOR LEGEND SEE PLAN NO. 5-1

NOTES:
 GRADES TO WHICH THIS IMPROVEMENT IS TO BE CONSTRUCTED ARE SHOWN ON PLANS AND PROFILES. GRADE POINTS FOR TOP OF CURBS, CENTER LINE OF STREETS, OR CENTER LINE OF ALLEYS ARE SHOWN BY CIRCLES ON PROFILES. AT ALL POINTS BETWEEN DESIGNATED POINTS THE GRADE SHALL BE ESTABLISHED SO AS TO COMFORM TO A STRAIGHT LINE DRAWN BETWEEN SAID DESIGNATED POINTS. ELEVATIONS ARE IN FEET ABOVE U.S.C. & G.S. MEAN SEA LEVEL DATUM OF 1929.
 THIS DRAWING AND THE DATA HEREON ARE HEREBY MADE A PART OF THE SPECIFICATIONS. AS REVISED.
 WORK SHALL BE CONSTRUCTED ACCORDING TO STANDARD SPECIFICATIONS DATED JULY 22, 1962, ON FILE IN THE OFFICE OF THE COUNTY ENGINEER AND SHALL BE PROSECUTED ONLY IN THE PRESENCE OF THE COUNTY ENGINEER.
 BEFORE WORK CAN BE STARTED, THE CONTRACTOR MUST OBTAIN A PERMIT TO EXCAVATE IN COUNTY STREETS FROM THE L.A. COUNTY ROAD DEPT., DISTRICT OFFICE NO. 1, 1100 N. GARDEN ST., LOS ANGELES, CALIF. COUNTY ENGINEER'S BUILDING, 100 WEST SECOND STREET, LOS ANGELES, CALIF. DISTRICT OFFICE, SUFFICIENT TO COVER THE COST OF CONSTRUCTION INSPECTION AND BARRING.
 APPROVAL OF THIS PLAN BY THE COUNTY OF LOS ANGELES DOES NOT CONSTITUTE A REPRESENTATION AS TO THE ACCURACY OF THE LOCATION OR THE EXISTENCE OR NON-EXISTENCE OF ANY UNDERGROUND UTILITY PIPES OR STRUCTURE WITHIN THE LIMITS OF THE PROJECT. THIS NOTE APPLIES TO ALL PAGES.
 IF WORK IS TO BE DONE IN A STATE HIGHWAY, A PERMIT MUST BE OBTAINED FROM THE STATE OF CALIFORNIA, DIVISION OF HIGHWAYS, 1200 SOUTH SPRING STREET, LOS ANGELES, CALIFORNIA.

COUNTY OF LOS ANGELES, CALIFORNIA
 JOHN A. LAMBIE, COUNTY ENGINEER J. D. PARKHURST, CHIEF ENGINEER
 APPROVED BY: *[Signature]* APPROVED BY: *[Signature]*
 SANITATION ENGINEER OFFICE ENGINEER

SUBMITTED BY: *Edwin W. Keigel*
 REGIONAL ENGINEER
 CHECKED BY: *Stank Fee 11-17-66*
 REG. C.E. NO. 10283

J.N. 0250.02



NO CHARGE FOR CONNECTIONS

38995

FOR. OF LOT 7 BLOCK 28 TRACT NO. 1343 M.B. 20/10-11

FOR. OF LOT 7 BLOCK 28 TRACT NO. 1343 M.B. 20/10-11

E-374

