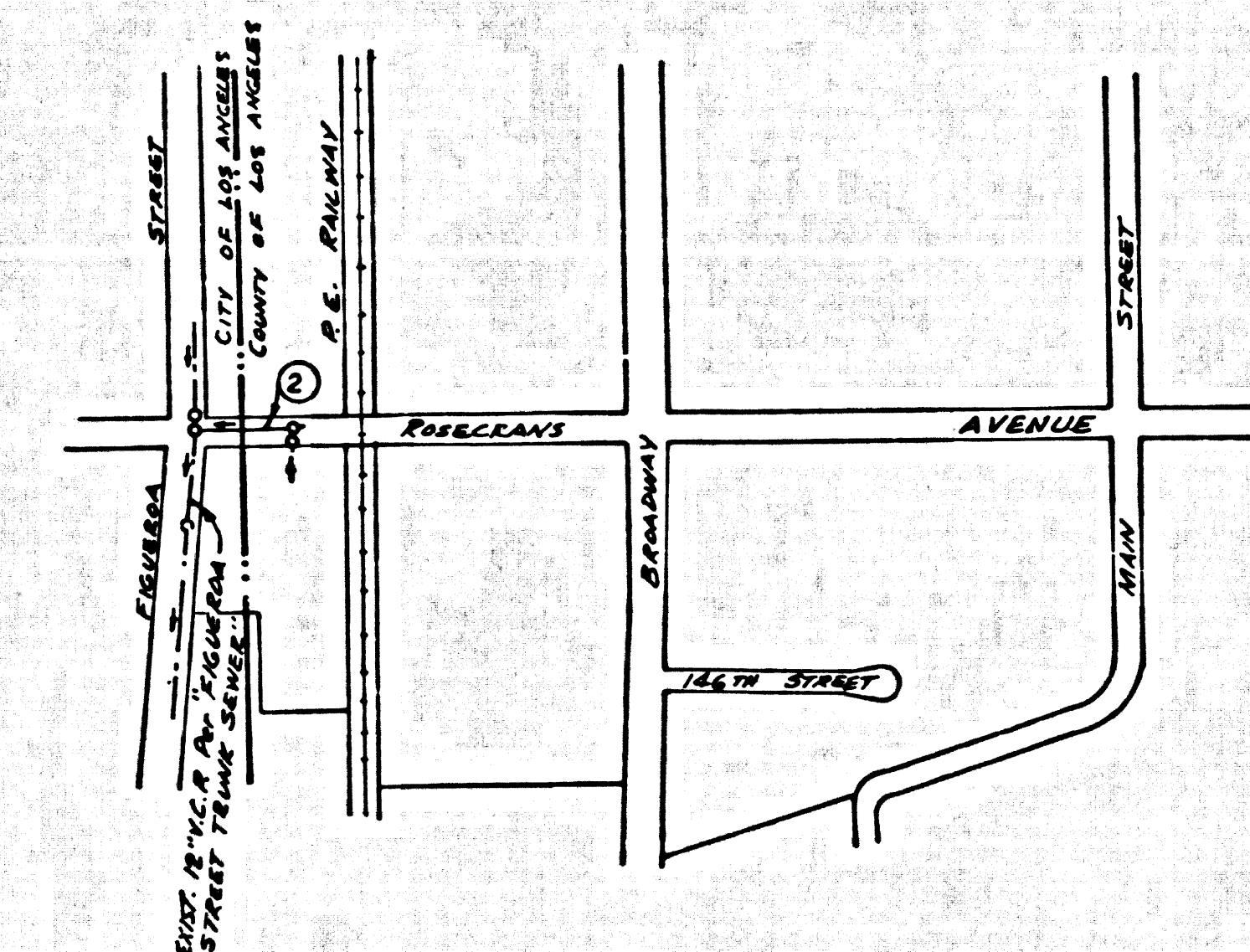


B.M. 5Y3880 ELEV. 102.554
 L & BN IN CONC. PNT. 14' ±
 E. BROADWAY 100' ± S.
 ROSECRANS AVE.
 GARDENA QUAD. 1960



INDEX MAP
 FIGUEROA STREET & ROSECRANS AVE.
 P.C. 7735
 SCALE: 1"=600'

CITY OF LOS ANGELES
 sub. submitted Feb. 2, 1967
 by J. H. Edwards
 DISTRICT ENGINEER
 APPROVED: J. H. Edwards
 CITY ENGINEER DATE 2/3/67

LENNOX BLDG. DIST. NO. 7

PROFILE, ALIGNMENT AND GRADE OF P.C. 7735
 SANITARY SEWERS PAGE 1
 TO BE CONSTRUCTED IN

FIGUEROA ST. AND ROSECRANS AVE.
 PRIVATE CONTRACT NO. 7735

W.S. 26
 1 SHEET, 2 PAGES
 SCALE: VERT. 1"=4' HORIZ. 1"=40'
 OCTOBER, 1966

PREPARED IN THE OFFICES OF
J. H. EDWARDS CO.
 1881 COLLEMAN PL.
 TORRANCE, CALIF. 90503
 REG. C.E. NO. 11822

40187

FOR LEGEND SEE PLAN NO. S-1

- NOTES:
1. PROFILE STARTS ON THE PROPERTY LINE OR PROPERTY LINES PRODUCED AT RIGHT ANGLES TO THE SEWER LINE AT THE CENTER LINE OF EACH MANHOLE.
 2. REPRESENTATIVE OF THE COUNTY ENGINEER WILL SURVEY OR LAY OUT ANY PORTION OF THE WORK.
 3. THE PRIVATE ENGINEER SHALL FURNISH THE COUNTY ENGINEER WITH GRADY SHEETS AND STATIONING FOR ALL HOUSE LATERALS AND "T" BRANCHES AND SHALL PROVIDE STAKES FOR THEM AT THEIR PROPER LOCATIONS WITH STATIONING PLAINLY MARKED. ALL HOUSE LATERALS SHALL BE CONSTRUCTED IN A STRAIGHT ALIGNMENT AT RIGHT ANGLES FROM THE MAIN LINE SEWER EXCEPT AS SHOWN ON THE PLANS. HOUSE LATERALS FROM CHIMNEYS SHALL NOT HAVE AN ANGLE OF LESS THAN 45° WITH THE MAIN LINE SEWER. ANY CHANGE IN ALIGNMENT SHALL BE REQUESTED IN WRITING BY THE PRIVATE ENGINEER.
 4. THE PRIVATE ENGINEER SHALL FURNISH THE HOUSE LATERAL DEPTH AT THE PROPERTY LINE BELOW THE TOP OF CURB ELEVATION FOR EACH HOUSE LATERAL ON THE GRADE SHEET.
 5. NO REVISIONS SHALL BE MADE IN THESE PLANS WITHOUT THE APPROVAL OF THE COUNTY ENGINEER.
 6. THE CONTRACTOR SHALL NOTIFY THE CONSTRUCTION DIVISION BY TELEPHONE, MADISON 9-6747, EXT. 8188, AT LEAST TWENTY-FOUR HOURS BEFORE STARTING ANY WORK UNDER THIS CONTRACT.
 7. MANHOLES SHALL BE BRICK SEWER STRUCTURES PER D.S. SPEC. CONCRETE MANHOLES PER S-3 OF S-8 MAY BE USED AS AN ALTERNATE IN LOCATIONS APPROVED BY THE COUNTY ENGINEER.
 8. USE STANDARD MANHOLE FRAMES AND COVERS, S-18, EXCEPT AS NOTED.
 9. MANHOLE TOPS IN UNIMPROVED RIGHTS-OF-WAY TO BE SIX INCHES ABOVE FINISHED GRADE.
 10. USE EXTRA STRENGTH PIPE. ALL PIPE IS STANDARD DEPTH EXCEPT AS NOTED.
 11. USE MECHANICAL COMPRESSION JOINTS FOR ALL V.C.P. JOINTS PER SPECS., SECS. 36, 46 & 49.
 12. IF A POWER POLE IS WITHIN THREE FEET OF THE SEWER, THE SEWER SHALL BE ENCASED, PER S-23, TWO FEET ON EACH SIDE FROM THE POINT OF INTERFERENCE.
 13. IF DURING THE COURSE OF CONSTRUCTION IT IS DETERMINED THAT THERE IS LESS THAN FOUR FEET OF COVER OVER THE TOP OF A MAIN LINE OR HOUSE LATERAL V.C.P. SEWER WHICH IS NOT INDICATED ON THE PLANS, THE PIPE SHALL BE ENCASED PER S-23, UNLESS OTHERWISE APPROVED BY THE COUNTY ENGINEER.
 14. HOUSE LATERALS TO BE CONSTRUCTED WITH RIBBETS AT PROPERTY LINE 4 FEET BELOW CURB GRADE EXCEPT AS NOTED.
 15. RESURFACE ALL TRINCHES WITHIN PAVED AREAS TO MEET L.A. COUNTY ROAD DEPT. CALIFORNIA STATE HIGHWAY RECONSTRUCTION, CITY OF LOS ANGELES, IN ACCORDANCE WITH PERMITS.
 16. FOR ALLOWABLE LEAKAGE TEST USE PALMIRA HD. 2, SPEC. 1, SEC. 54.
 17. ALL STATE AND LOCAL TRENCH SAFETY ORDERS WILL BE STRICTLY ENFORCED.

NO CONNECTIONS FOR THE DISPOSAL OF INDUSTRIAL WASTES SHALL BE MADE TO SEWERS SHOWN ON THESE PLANS WITHOUT WRITTEN PERMISSION FROM THE CHIEF ENGINEER AND GENERAL MANAGER OF THE COUNTY SANITATION DISTRICTS.

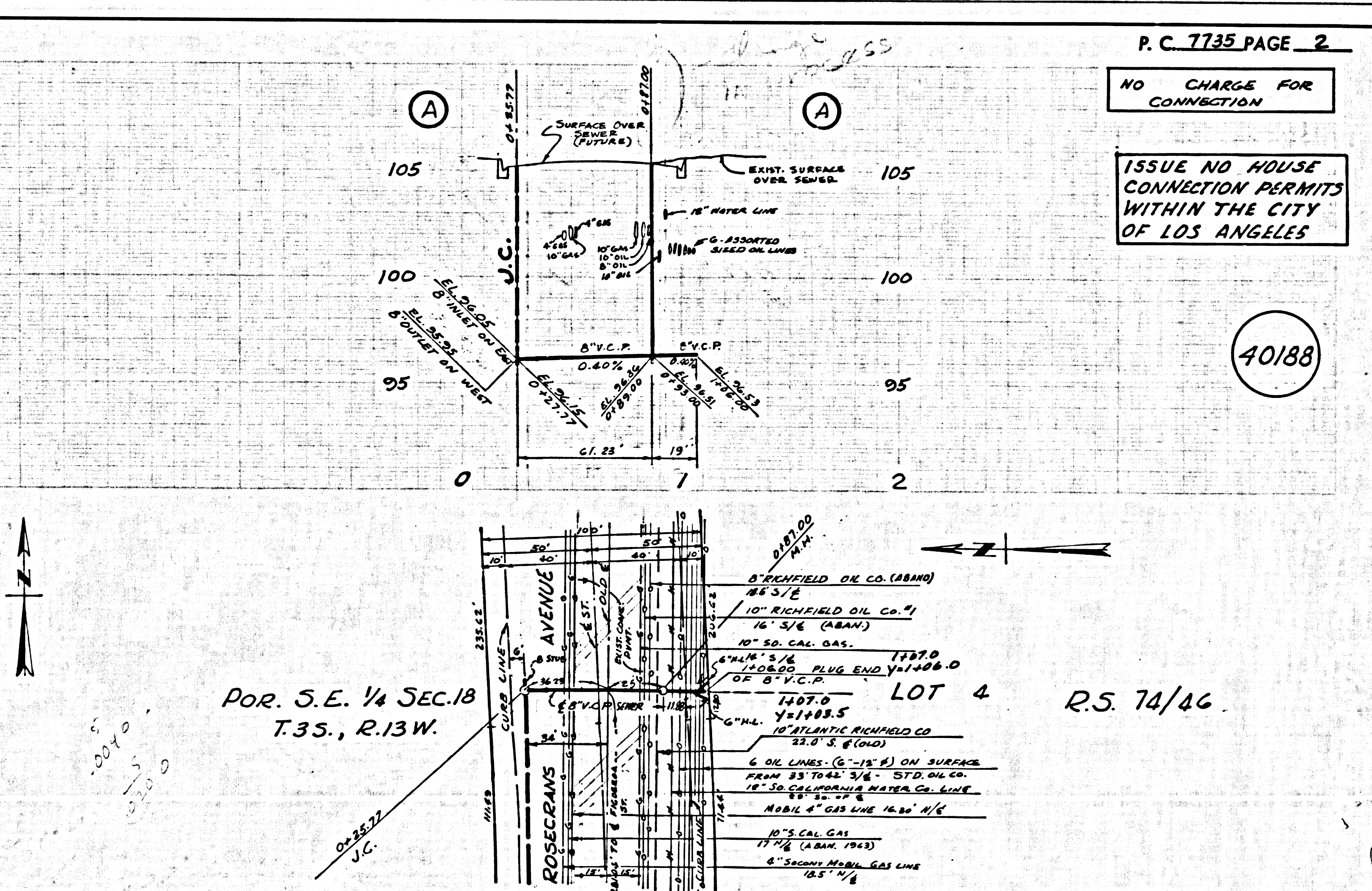
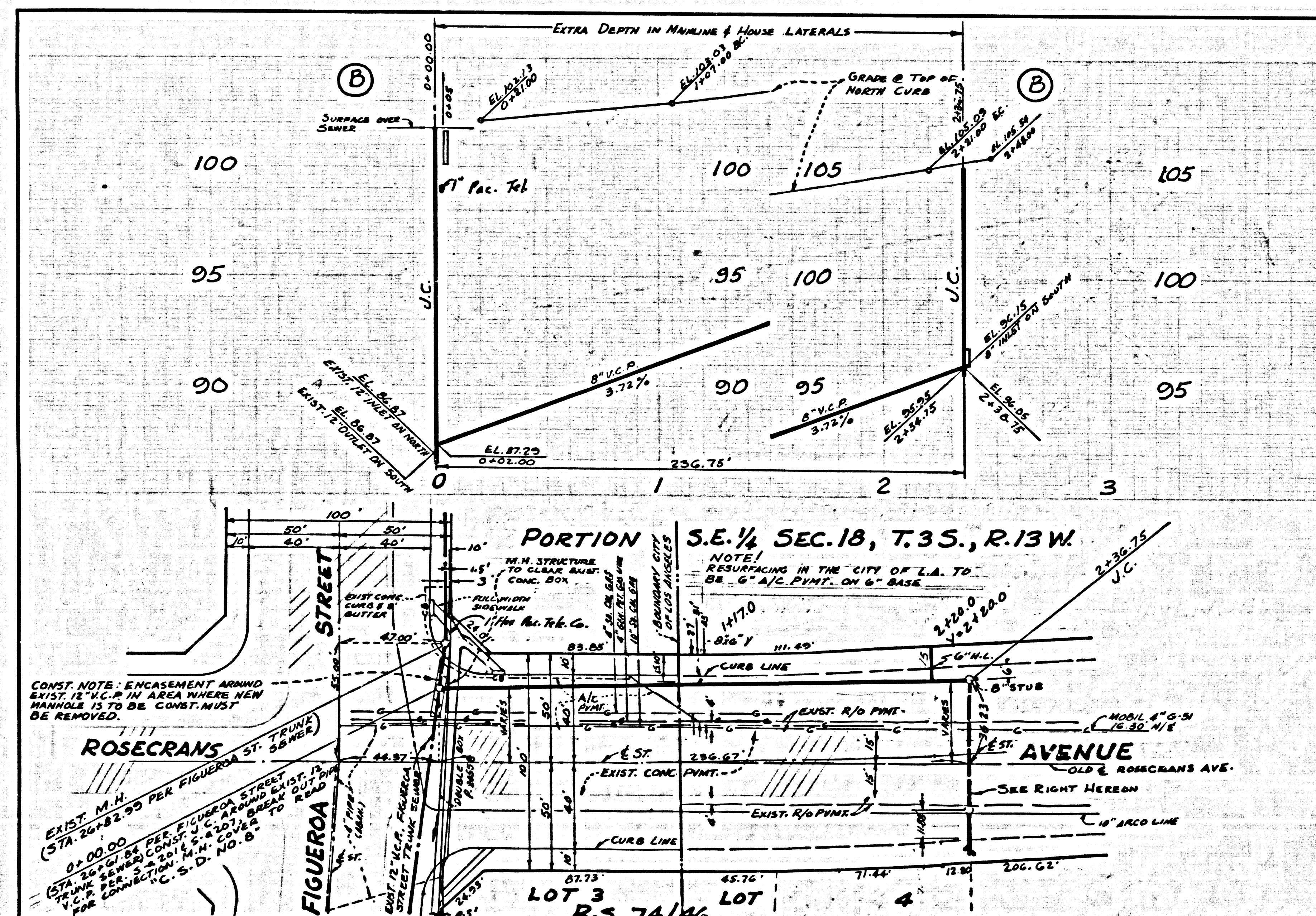
NOTICE TO CONTRACTOR
 The existence and location of any underground utility pipes or structures shown on these plans are obtained by a search of the available records. To the best of my knowledge there are no existing utilities except as shown on these plans. The contractor is required to take due precautionary measures to protect the utility lines shown and any other lines not shown on these plans.

COLLECT CHARGES AS INDICATED
L. Carter 1/16/67

COUNTY OF LOS ANGELES, CALIFORNIA
 JOHN A. LAMBE, COUNTY ENGINEER
 J. D. PARKHURST, CHIEF ENGINEER
 CO. SANIT. DIST. 7
 APPROVED BY Richard M. Coon
 ASSISTANT SANITATION ENGINEER
 APPROVED BY J. H. Edwards
 OFFICE ENGINEER

SUBMITTED BY J. H. Edwards
 REGIONAL ENGINEER
 CHECKED BY Richard M. Coon
 REG. C.E. NO. 10653

J.N. 0368.00



P.C. 7735 PAGE 2
 NO CHARGE FOR CONNECTION

ISSUE NO HOUSE CONNECTION PERMITS WITHIN THE CITY OF LOS ANGELES

40188