

B.M. 44-37 ELEV. 69.770 - FB3165-59
 Bronze Disk Stamped 44-37 (L.A.C.F.C.D.) 0.52
 1/2" East of the intersection of Alondra Blvd.
 & Wilmington Ave. at a Conc. Bridge over a
 L.A.C.F.C. Channel, in the Top of the North end
 of the West Conc. Wall.

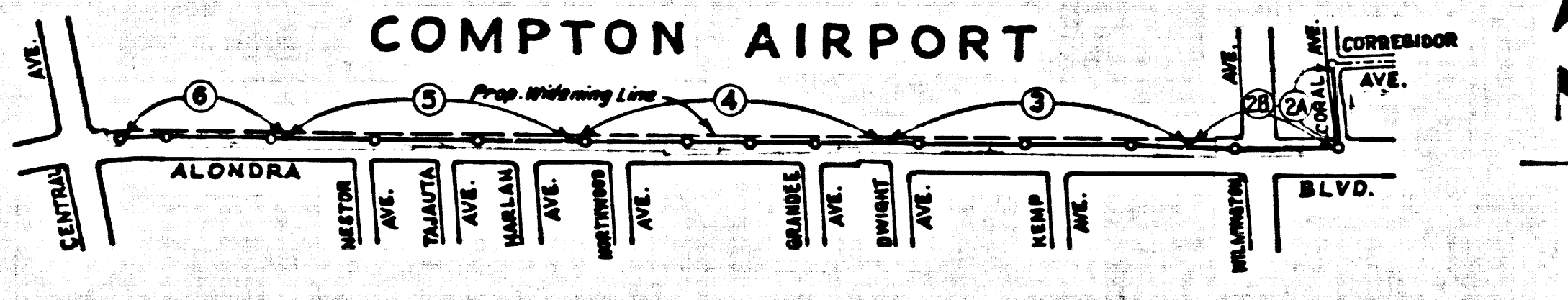
BACKFILL REQUIREMENTS

(a) ALL BACKFILL AND EARTH REPLACED SHALL BE COMPACTED TO A MINIMUM OF 90% OF MAXIMUM DENSITY PER A.S.T.M. STANDARD METHOD OF TEST D 998-57T AS MODIFIED. ACCEPTABLE CERTIFICATION OF SUCH COMPACTION SHALL BE SUBMITTED TO THE CONSTRUCTION DIVISION.

(b) SAND BACK-FILL SHALL BE USED FROM STA. 1+00 TO STA. 3+83.18 (PAGE 2A) AND FROM STA. 1+09.95 TO STA. 5+40.00 (PAGE 2B). COMPACTION REQUIREMENTS SHALL BE AS DESCRIBED IN (a) ABOVE.

RESURFACING OF SEWER TRENCHES WITHIN PAVED AREAS OF THIS PROJECT SHALL BE AS FOLLOWS:

STREET	TYPE OF RESURFACING
CORAL AVE.	FOUR INCHES ASPHALTIC CONCRETE PAVEMENT DU FOUR INCHES OF AGG. BASE, TYPE "A"
ALONDRA BLVD. STA. 1+09.95 TO 3+83.00	SEVEN INCHES OF CEMENT CONCRETE PAVEMENT
ALONDRA BLVD. STA. 3+83.00 TO 5+40.00	FOUR INCHES ASPHALTIC CONCRETE PAVEMENT DU 1/2 INCHES AGG. BASE, TYPE "A"
ALONDRA BLVD. STATION PROPERTY	TWO INCHES OF DOOR AND OIL PAVEMENT WITHIN PAVED AREAS.



INDEX MAP
P.C. 7739
 Scale 1"=600'

ADDITIONAL NOTES

- THE CONTRACTOR SHALL OBTAIN A PER EXEMPT CONSTRUCTION PERMIT FROM THE CITY OF COMPTON.
- RESURFACE TRENCHES WITHIN PAVED AREA OF STREETS PER SEC. 89 OF STANDARD SEWER SPECIFICATIONS.
- APPROVAL OF THE SEWER PLANS FOR THIS PROJECT BY THE COUNTY OF LOS ANGELES AND THE CITY OF COMPTON DOES NOT CONSTITUTE A REPRESENTATION AS TO ACCURACY OF THE LOCATION OF OR THE EXISTENCE OR NON-EXISTENCE OF ANY UNDERGROUND UTILITY PIPE OR STRUCTURE WITHIN THE LIMITS OF THIS PROJECT.
- THE CONTRACTOR SHALL NOTIFY ALL UTILITY COMPANIES AFFECTED PRIOR TO BEGINNING CONSTRUCTION IN THE VICINITY OF THE PROPOSED FACILITIES.
- THE CONTRACTOR SHALL MAINTAIN A MINIMUM OF 4 LANES OF TRAFFIC IN ALONDRA BLVD. AND WILMINGTON AVE. FROM 5:00 A.M. TO 10:00 P.M. AND FROM 8:00 P.M. TO 5:00 P.M.
- IF A POWER POLE IS WITHIN THREE FEET OF SEWER, THE SEWER SHALL BE EXCAVED, PER 8-25, TWO FEET ON EACH SIDE FROM THE POINT OF INTERFERENCE.

THE FOLLOWING LATEST REVISED STANDARD PLANS ON FILE IN THE OFFICE OF COUNTY ENGINEER SHALL APPLY IN THE CONSTRUCTION OF THIS PROJECT.

LEGEND	NO.
MINIMUM EXCAVATION SAFETY REQUIREMENTS	8-1
BRICK MANHOLE	8-2
MANHOLE FRAME AND COVER	8-3
MANHOLE STEP	8-4
BEDDING FOR SEWER PIPE	8-5
SPECIAL SUPPORT AND PROTECTION	8-22
CRADING AND INCASMENT	8-23
STANDARD PIPE SUPPORT	8-26
STOPPERS	8-30

THE UNDERGROUND UTILITY COMPANIES WITHIN THE LIMITS OF THIS PROJECT ARE AS FOLLOWS:

- CITY OF COMPTON WATER DEPT.
- PACIFIC TELEPHONE CO.
- SOUTHERN CALIFORNIA GAS CO.
- RISFIELD OIL CO.

NO CONNECTIONS FOR THE DISPOSAL OF INDUSTRIAL WASTES SHALL BE MADE TO SEWERS SHOWN ON THESE DRAWINGS WITHOUT WRITTEN PERMISSION FROM THE CHIEF ENGINEER AND GENERAL MANAGER OF THE COUNTY SANITATION DISTRICTS.

PAGE 1
CAPITAL PROJECT NO. 7448.04
PRIVATE CONTRACT NO. 7739
 PROFILE, ALIGNMENT AND GRADE OF
SANITARY SEWERS
 TO SERVE
COMPTON AIRPORT

3 SHEETS, 6 PAGES
 SCALE: HORIZ. 1"=60', VERT. 1"=4'
 APRIL, 1967

JOHN A. LAMBIE COUNTY ENGINEER
 APPROVED BY *[Signature]* CHIEF ENGINEER OF COUNTY SANITATION DISTRICT NO. 8
 APPROVED BY *[Signature]* OFFICE ENGINEER
 SUBMITTED BY *[Signature]* REG. C. E. NO. 1632A
 APPROVED BY *[Signature]* COMPTON CITY ENGINEER

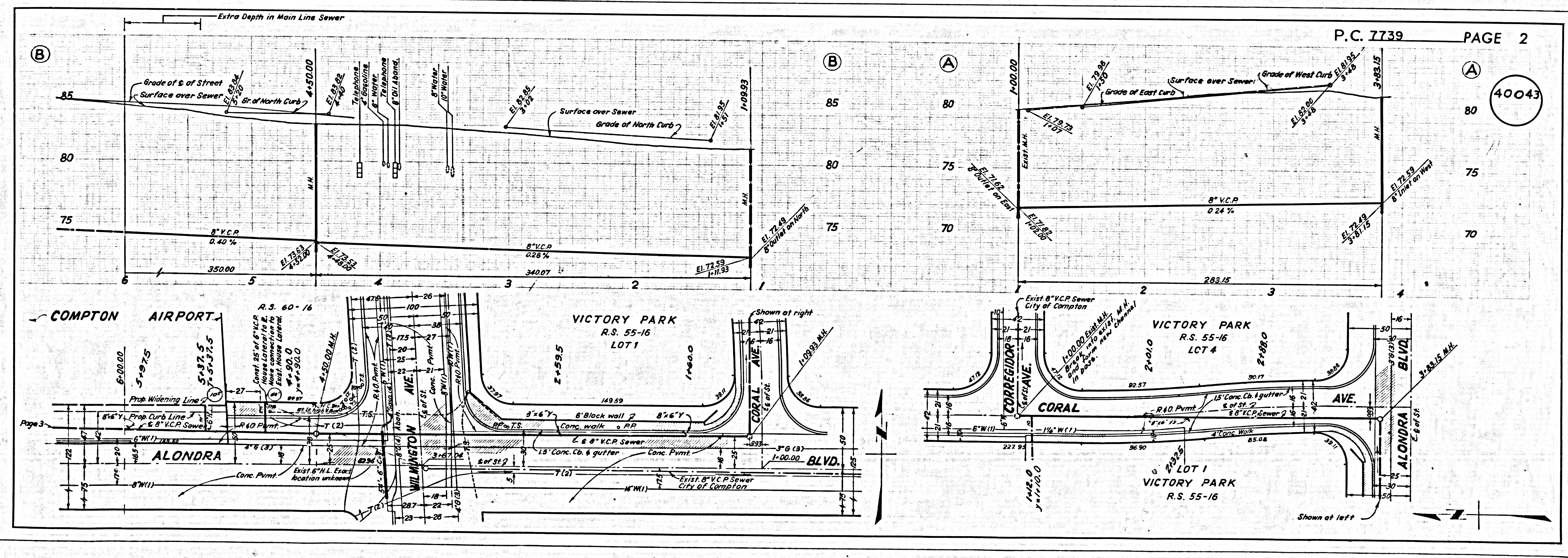
NOTE: WORK SHALL BE CONSTRUCTED ACCORDING TO STANDARD SPECIFICATIONS DATED MAY 25, 1962, AS REVISED, ON FILE IN THE OFFICE OF THE COUNTY ENGINEER AND SHALL BE PROTECTED ONLY IN THE PRESENCE OF THE COUNTY ENGINEER.

GRADES TO WHICH THIS IMPROVEMENT IS TO BE CONSTRUCTED ARE SHOWN ON PLANS AND PROFILE GRADE POINTS FOR TOP OF CURB, CENTER LINE OF STREET OR CENTER LINE OF ALLEY ARE SHOWN BY CIRCLES ON DRAWING AT ALL POINTS WITHIN DESIGNATED POINTS THE GRADE SHALL BE ESTABLISHED SO AS TO CONFORM TO A STRAIGHT LINE DRAWN BETWEEN SAID DESIGNATED POINTS.

ELEVATIONS ARE IN FEET ABOVE U.S.C. & G.S. SEA LEVEL DATUM OF 1929. UNIT PRICES FOR ADDITIONAL WORK WHICH MAY BE REQUIRED BUT WHICH CANNOT BE ASCERTAINED IN ADVANCE, SHALL BE SUBMITTED IN THE PROPOSAL.

THIS DRAWING AND THE DATA HEREON ARE HEREBY MADE A PART OF THE SPECIFICATIONS.

LAYOUT	R. González-Rubio	4-25-67	UNDERGROUND	C.W. Scott	4-25-67
TRACED	R. González-Rubio	4-25-67	BENCH MARKS	BOWLES	4-25-67
CHECKED	K. Weber	4-25-67			
F.B. 3165			INSPECTOR		
A.B.			RECORD PLANS		



P.C. 7739 PAGE 2

40043

