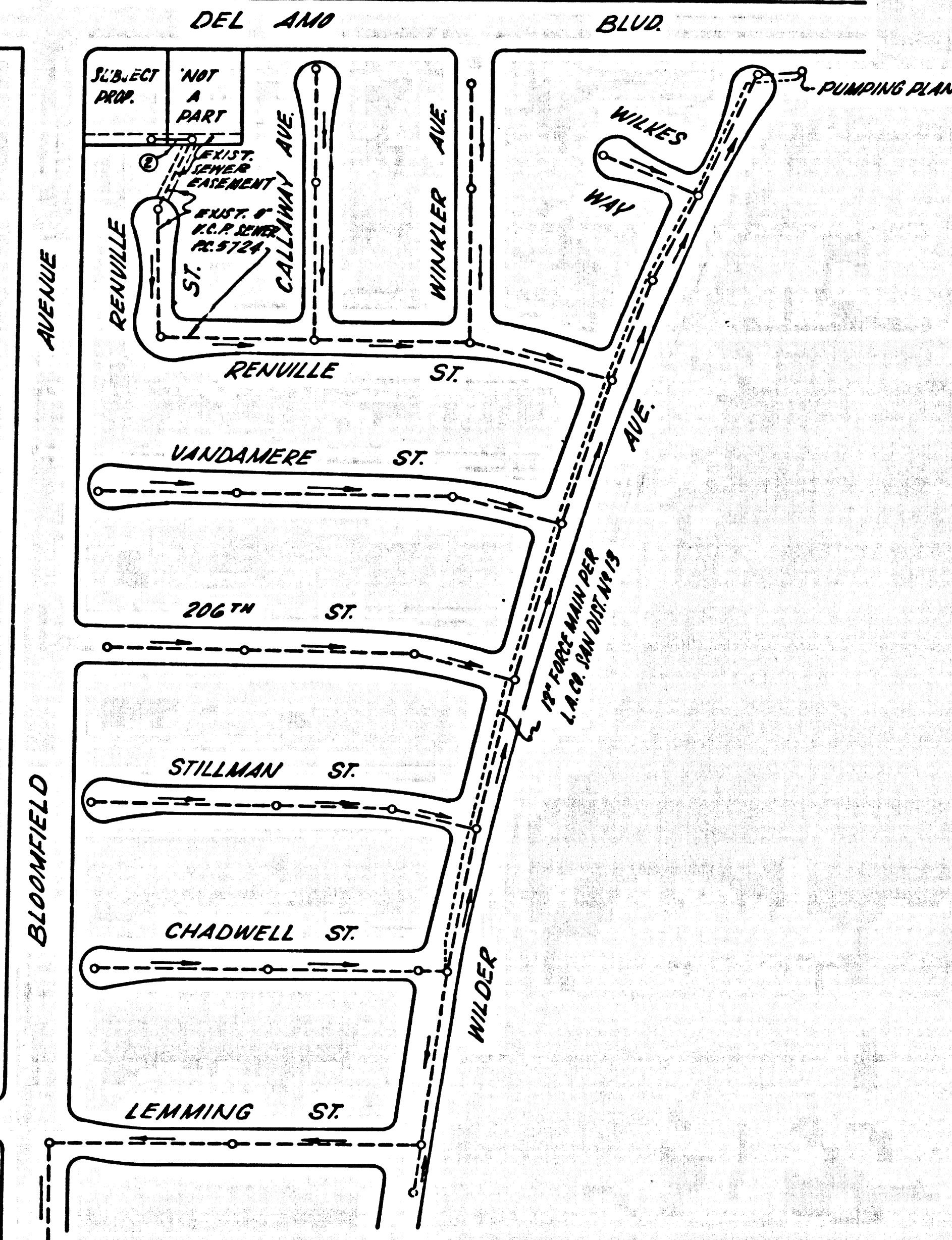


B.M. BY 304 ELEV. 38.63  
 COUNTY SURVEY MON. IN WELL WITH  
 COVER & INT. OF DEL AMO BLVD. &  
 BLOOMFIELD AVE.  
 ARTEJIA QUAD. 19 65

P.C. 7747  
 EASEMENT SOUTH OF DEL AMO BLVD.  
 INDEX MAP  
 SCALE 1" = 20'



LAKWOOD BLDG. DIST. NO. 4.01

PROFILE, ALIGNMENT AND GRADE OF P.C. 7747  
 SANITARY SEWERS PAGE 1  
 TO BE CONSTRUCTED IN  
 EASEMENT SOUTH OF DEL AMO BLVD

PRIVATE CONTRACT NO. 7747

W.S. 31  
 1 SHEET OF 2 PAGES  
 SCALE: VERT. 1" = 4' HORIZ. 1" = 40'  
 SEPTEMBER, 1966  
 PREPARED IN THE OFFICES OF  
 ARMET & ASSOCIATES  
 9716 ESTELLE AVE. BAKERSFIELD, CALIF. (PH. 837-7592)  
 BY Joseph C. Johnson  
 REG. C. E. NO. 10177

39056

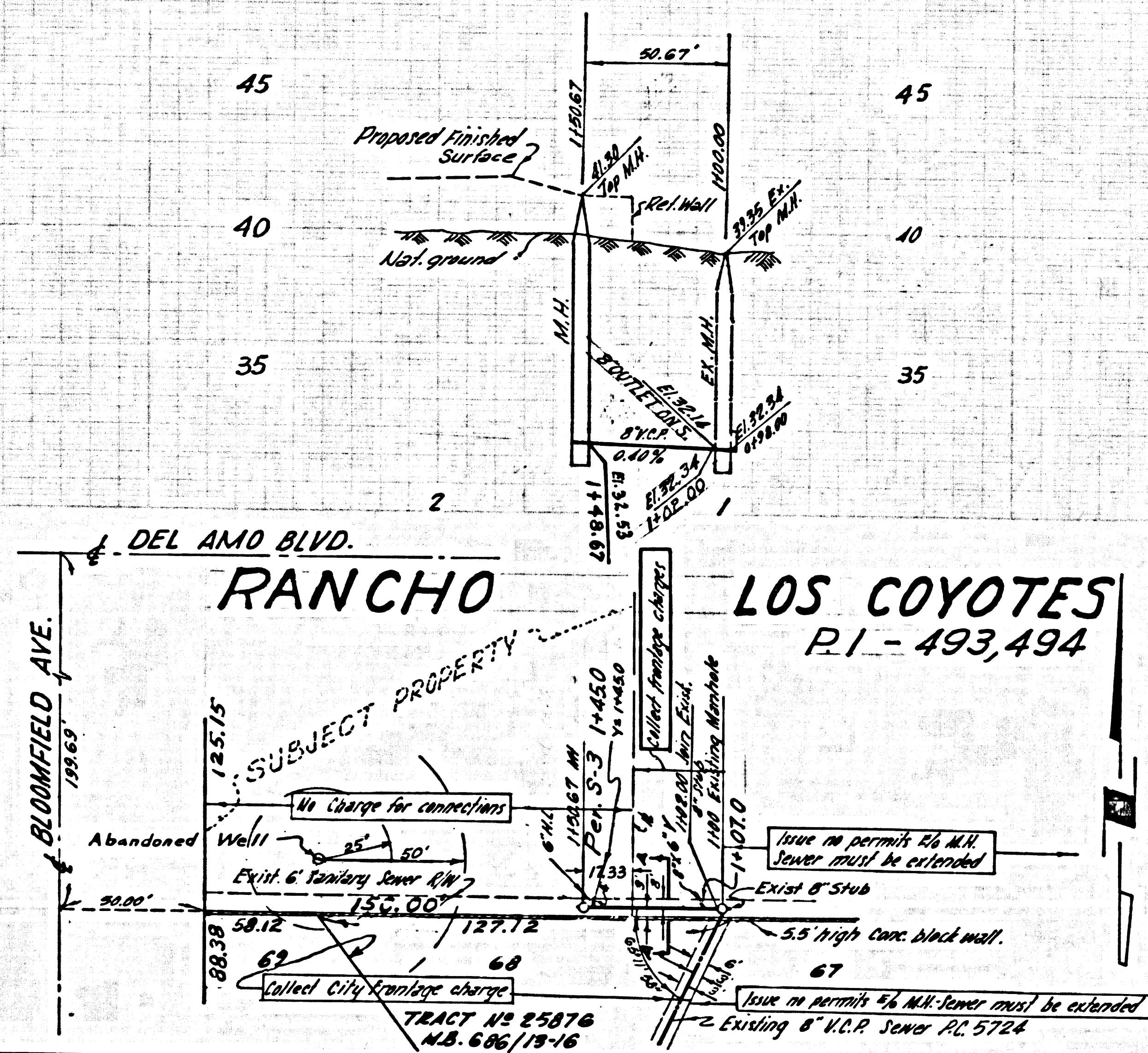
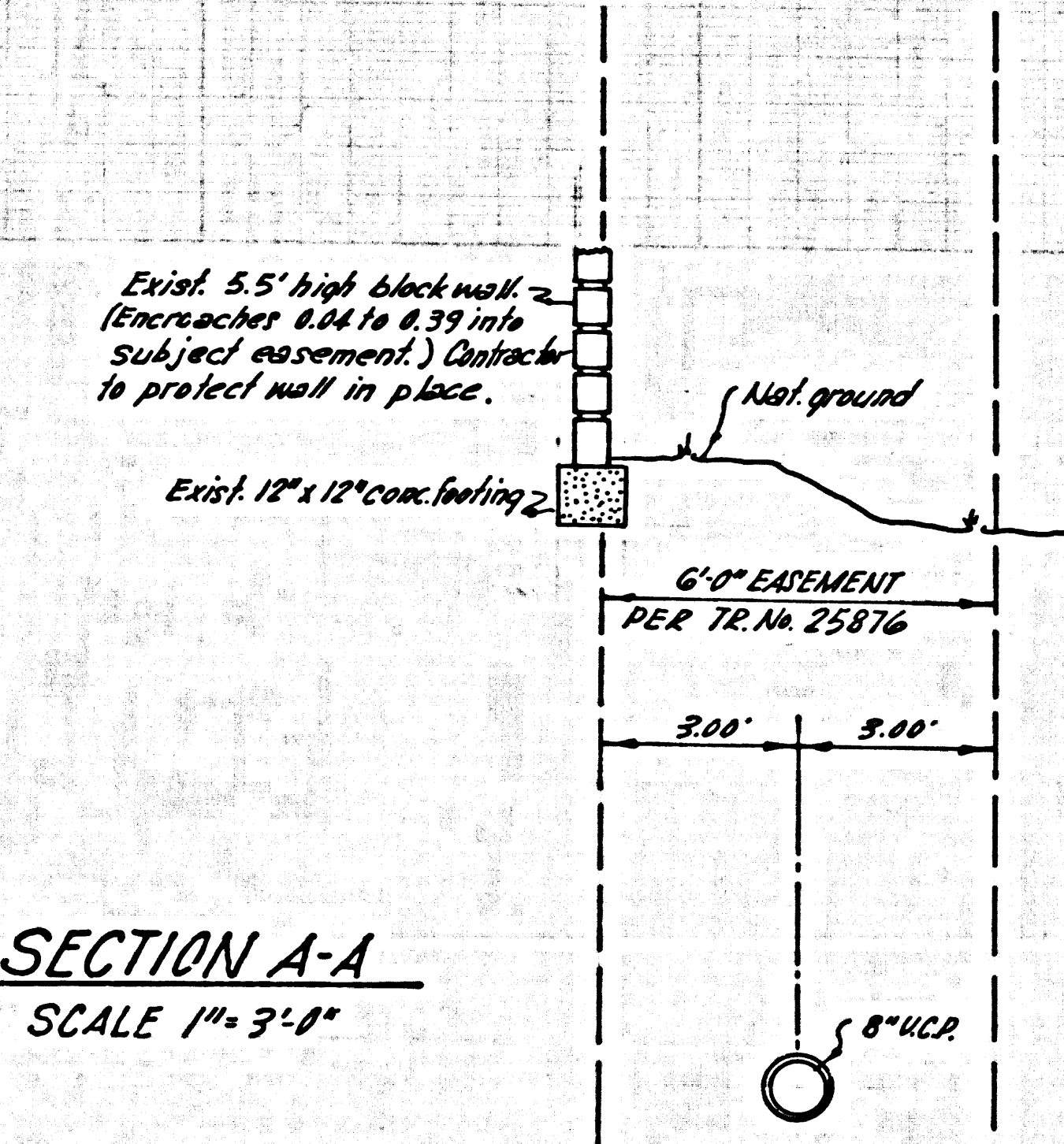
- NOTES:
- PROVIDE STAKES ON THE PROPERTY LINE OR PROPERTY LINES PRODUCED AT RIGHT ANGLES TO THE SEWER LINE AT THE CENTER LINE OF EACH MANHOLE.
  - NO REPRESENTATIVE OF THE CITY ENGINEER WILL SURVEY OR LAY OUT ANY PORTION OF THE WORK.
  - THE PRIVATE ENGINEER SHALL FURNISH THE CITY ENGINEER WITH GRADE SHEETS AND STATIONING FOR ALL HOUSE LATERALS AND "T" BRANCHES AND SHALL PROVIDE STAKES FOR THEM AT THEIR PROPER LOCATIONS WITH STATIONING PLAINLY MARKED. ALL HOUSE LATERALS SHALL BE CONSTRUCTED IN A STRAIGHT ALIGNMENT AT RIGHT ANGLES FROM THE MAIN LINE SEWER EXCEPT AS SHOWN ON THE PLANS. HOUSE LATERALS FROM CHIMNEYS SHALL NOT HAVE AN ANGLE OF LESS THAN 45° WITH THE MAIN LINE SEWER. ANY CHANGE IN ALIGNMENT SHALL BE REQUESTED BY WRITING BY THE PRIVATE ENGINEER.
  - THE PRIVATE ENGINEER SHALL FURNISH THE HOUSE LATERAL DEPTH AT THE PROPERTY LINE BELOW THE TOP OF CURB ELEVATION FOR EACH HOUSE LATERAL ON THE GRADE SHEET.
  - NO BYPASSING SHALL BE MADE IN THESE PLANS WITHOUT THE APPROVAL OF THE CITY ENGINEER.
  - THE CONTRACTOR SHALL NOTIFY THE CONSTRUCTION DIVISION BY TELEPHONE, MADISON 9-5747, EXT. 81581, AT LEAST TWENTY-FOUR HOURS BEFORE STARTING ANY WORK UNDER THIS CONTRACT.
  - MANHOLES SHALL BE BRICK SEWER STRUCTURES PER S-2.
  - USE STANDARD MANHOLE FRAMES AND COVERS, S-14, EXCEPT AS NOTED.
  - USE 12" STRENGTH PIPE. ALL PIPE IS STANDARD DEPTH EXCEPT AS NOTED.
  - USE "SPREAD-SHALL" OR "WEDGE-LOCK" FOR ALL S.C.P. JOINTS PER SPEC'S, SPEC. 24, 40 & 41.
  - IF A POWER POLE IS WITHIN THREE FEET OF THE SEWER, THE SEWER SHALL BE ENCASED, PER S-23, TWO FEET ON EACH SIDE FROM THE POINT OF INTERFERENCE.
  - IF DURING THE COURSE OF CONSTRUCTION IT IS DETERMINED THAT THERE IS LESS THAN FOUR FEET OF COVER OVER THE TOP OF A MAIN LINE OR HOUSE LATERAL V.C.P. SEWER WHICH IS NOT INDICATED ON THE PLANS, THE PIPE SHALL BE ENCASED PER S-23, UNLESS OTHERWISE APPROVED BY THE CITY ENGINEER.
  - HOUSE LATERALS TO BE CONSTRUCTED WITH INVERTS AT 1/4" RISE PER FOOT TO THE PROPERTY LINE.
  - 
  - 
  - FOR ALLOWABLE LEAKAGE TEST USE FORMULA NO. 3, SPEC'S, SEC. 24.
  - ALL STATE AND LOCAL TRENCH SAFETY ORDERS WILL BE STRICTLY ENFORCED.

NO CONNECTIONS FOR THE DISPOSAL OF INDUSTRIAL WASTES SHALL BE MADE TO SEWERS SHOWN ON THESE DRAWINGS WITHOUT WRITTEN PERMISSION FROM THE CHIEF ENGINEER AND GENERAL MANAGER OF THE COUNTY SANITATION DISTRICTS.

COLLECT CHARGES AS INDICATED  
Richard M. Cron  
 ASSISTANT SANITATION ENGINEER

REVIEWED BY: Avia Medley  
 INDUSTRIAL WASTE DIVISION

REMARKS TO WHICH THIS IMPROVEMENT IS TO BE CONSTRUCTED ARE SHOWN ON PLANS AND PROFILES. GRADE POINTS FOR TOP OF CURBS, CENTER LINE OF STREETS, OR CENTER LINE OF ALLEYS ARE SHOWN BY CIRCLES ON PROFILES. AT ALL POINTS BETWEEN DESIGNATED ELEVATIONS ARE IN FEET ABOVE U.S.C. & G.S. MEAN SEA LEVEL DATUM OF 1929.  
 THE DRAWING AND THE DATA HEREON ARE HEREBY MADE A PART OF THE SPECIFICATIONS. AS PROVIDED HEREIN WORK SHALL BE CONSTRUCTED ACCORDING TO STANDARD SPECIFICATIONS BATHS, S.E. 12622, ON FILE IN THE OFFICE OF THE CITY ENGINEER AND SHALL BE PRODUCED ONLY IN THE PRESENCE OF THE CITY ENGINEER.  
 BEFORE WORK CAN BE STARTED, CONTRACTOR MUST MAKE A DEPOSIT WITH THE CITY OF LAKEWOOD, BOND CLERK'S OFFICE.  
 CONSTRUCTION INSPECTION AND SECOND PLANS. APPROVAL OF THE PLAN BY THE CITY ENGINEER DOES NOT CONSTITUTE A REPRESENTATION AS TO THE ACCURACY OF THE LOCATION OR ON THE EXISTENCE OR NON-EXISTENCE OF ANY UNDERGROUND UTILITY PIPE, OR STRUCTURE WITHIN THE LIMITS OF THIS PROJECT. THIS NOTE APPLIES TO ALL PAGES.  
 IF WORK IS TO BE DONE IN A STATE HIGHWAY, A PERMIT MUST BE OBTAINED FROM THE STATE OF CALIFORNIA, DIVISION OF HIGHWAYS, 226 SOUTH SPRING STREET, LOS ANGELES, CALIFORNIA.  
 CITY OF LAKEWOOD, CALIFORNIA  
 JOHN A. LAMBIE, CITY ENGINEER  
 APPROVED BY: Richard M. Cron ASSISTANT SANITATION ENGINEER  
 APPROVED BY: J. D. Parkhurst CHIEF ENGINEER  
 CHECKED BY: Orville E. McCall  
 REG. C.E. NO. 15931



P. C. 7747 PAGE 2  
 COLLECT CHARGES AS INDICATED

39057