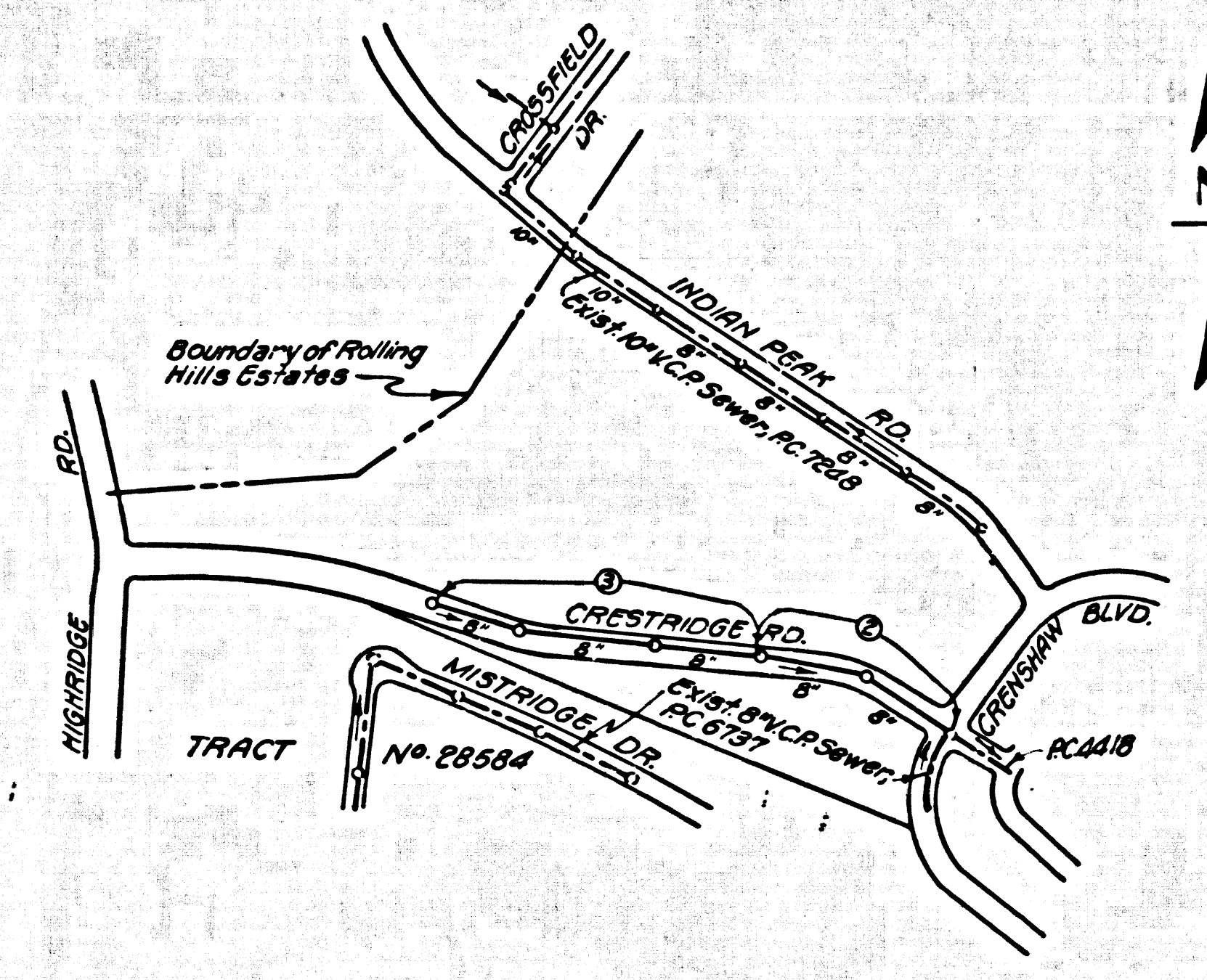


B.M. 5V-4402 ELEV. 1201.398
 LOS ANGELES COUNTY SURVEY MON. MAP 121M 50-7
 1950 F.T. 3083' IN 12" CONC. POST 4" ABOVE GROUND
 8" V.C.P. ON CENTER OF ROAD (CRESTRIDGE BLVD.) 38.3' S. 12.1' E.
 FROM C.T.R. POINT 607' N. FROM C.T.R. POINT 533' S. 101' E.
 FROM 607' N. 38.3' S. 12.1' E. POINT
 PALOS VERDES QUAD. 1955



NOTE: THE CONTRACTOR SHALL VERIFY LOCATION AND DEPTH OF ALL EXISTING UTILITIES AND SHALL PREVENT DAMAGE TO AND MAINTAIN UTILITIES

INDEX MAP
 CRESTRIDGE RD.
 P.C. 7751
 Scale 1"=600'

4-14-67
 Revised Alignment from Sta. 0+71.47 to Sta. 1+306.9, added 8" Water-Line
 Converse recommends the Sewer be located 33' S. of N. 8' as a safety precaution due to geological conditions.

Approved: *Edward H. Velsky*

DOUBLE SCALE
 LOMITA BLDG. DIST. NO. 12

PROFILE ALIGNMENT AND GRADE OF
 SANITARY SEWERS PAGE 1
 TO BE CONSTRUCTED IN
 CRESTRIDGE ROAD

PRIVATE CONTRACT NO. 7751

S. 27
 2 SHEETS, 3 PAGES

SCALE: HORIZ. 1"=100' VERT. 1"=10'
 AUGUST, 1966

40245

PREPARED IN THE OFFICES OF
 Siland Engineering Associates
 1068 E. Columbia Blvd., Pasadena, California
 BY: *J. G. Siland*
 REG. C.E. NO. 9553

FOR LEGEND SEE PLAN NO. 5-1

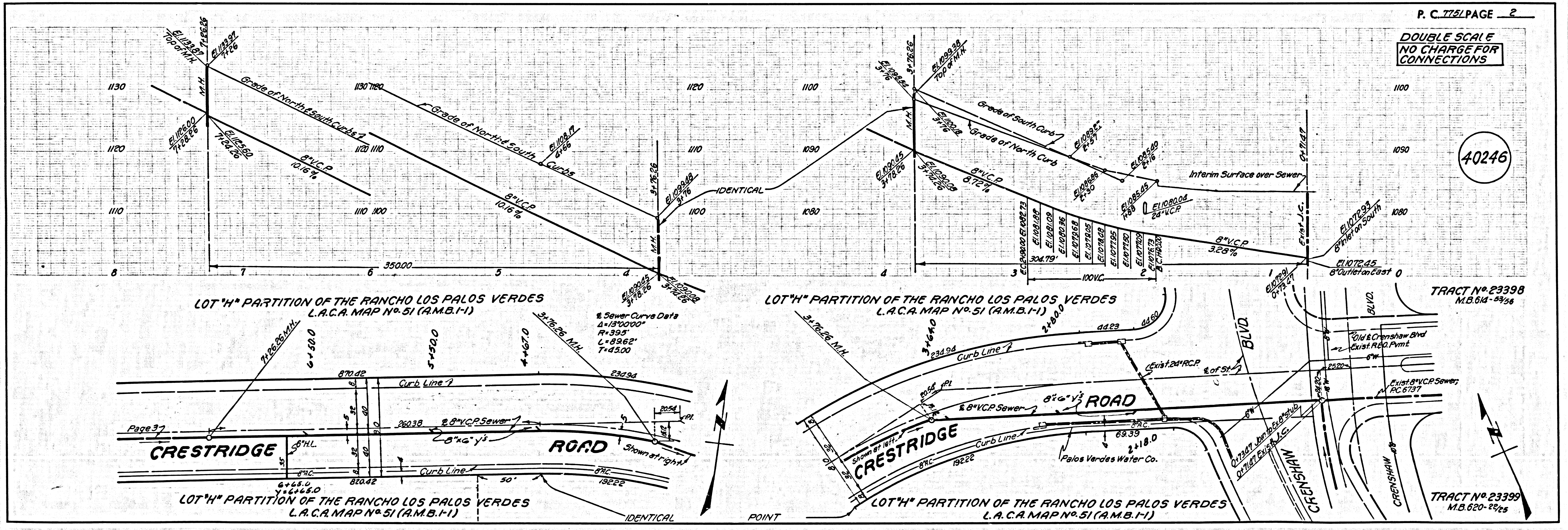
NOTE:
 GRADES TO WHICH THIS IMPROVEMENT IS TO BE CONSTRUCTED ARE SHOWN ON PLANS AND PROFILES. GRADE POINTS FOR TOP OF CURB, CENTER LINE OF STREETS, OR CENTER LINE OF ALLEYS ARE SHOWN BY CIRCLES ON PROFILES. AT ALL POINTS BETWEEN DESIGNATED POINTS THE GRADE SHALL BE ESTABLISHED SO AS TO CONFORM TO A STRAIGHT LINE DRAWN BETWEEN SAID DESIGNATED POINTS. ELEVATIONS ARE IN FEET ABOVE U.S.C. & G.S. SEA LEVEL DATUM OF 1929. THIS DRAWING AND THE DATA HEREON ARE HEREBY MADE A PART OF THE SPECIFICATIONS AND CONTRACT DOCUMENTS. WORK SHALL BE CONSTRUCTED ACCORDING TO STANDARD SPECIFICATIONS DATED JULY 23, 1962, ON FILE BY THE OFFICE OF THE COUNTY ENGINEER AND SHALL BE PRODUCED IN FULL IN THE PRESENCE OF THE COUNTY ENGINEER. BEFORE WORK CAN BE STARTED, THE CONTRACTOR MUST OBTAIN A PERMIT TO EXCAVATE IN COUNTY STREETS FROM THE L.A. COUNTY ROAD DIST. DISTRICT OFFICE AND TO THE COUNTY ENGINEER, ROOM 300, COUNTY ENGINEERING BUILDING, 100 WEST SECOND STREET OR "PALOS VERDES WATERWORKS DIVISION, REGIONAL OFFICE, SUFFICIENT TO COVER THE COST OF CONSTRUCTION INSPECTION AND RECORD PLANS. APPROVAL OF THIS PLAN BY THE COUNTY OF LOS ANGELES DOES NOT CONSTITUTE A REPRESENTATION AS TO THE ACCURACY OF THE LOCATION OR OF THE EXISTENCE OR NON-EXISTENCE OF ANY UNDERGROUND UTILITY PIPE, OR STRUCTURE WITHIN THE LIMITS OF THE PROJECT. THIS NOTE APPLIES TO ALL PAGES. *WORK IS TO BE DONE IN A STATE MANNER. A PERMIT MUST BE OBTAINED FROM THE STATE OF CALIFORNIA, DIVISION OF HIGHWAYS, 126 SOUTH SPANIA STREET, LOS ANGELES, CALIFORNIA.

COUNTY OF LOS ANGELES, CALIFORNIA
 JOHN A. LAMBIE, COUNTY ENGINEER J. D. PARKHURST, CHIEF ENGINEER
 CO. 544 DIST. NO. 5
 APPROVED BY: *Richard M. Coon* ASSISTANT SANITATION ENGINEER APPROVED BY: *E. J. [Signature]* OFFICE ENGINEER

CHECKED BY: *Edward H. Velsky*
 REG. C.E. NO. 12423

NO CONNECTIONS FOR THE DISPOSAL OF INDUSTRIAL WASTES SHALL BE MADE TO SEWERS SHOWN ON THESE DRAWINGS WITHOUT WRITTEN PERMISSION FROM THE CHIEF ENGINEER AND GENERAL MANAGER OF THE COUNTY SANITATION DISTRICTS.

J.N. 2368.09



DOUBLE SCALE
 NO CHARGE FOR CONNECTIONS

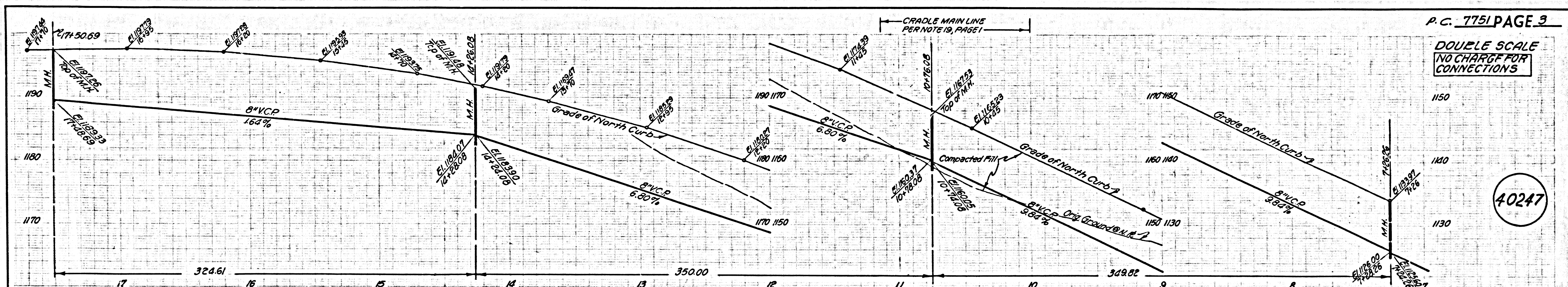
40246

LOT 4 PARTITION OF THE RANCHO LOS PALOS VERDES
 L.A.C.A. MAP NO. 51 (A.M.B.1-1)

LOT 4 PARTITION OF THE RANCHO LOS PALOS VERDES
 L.A.C.A. MAP NO. 51 (A.M.B.1-1)

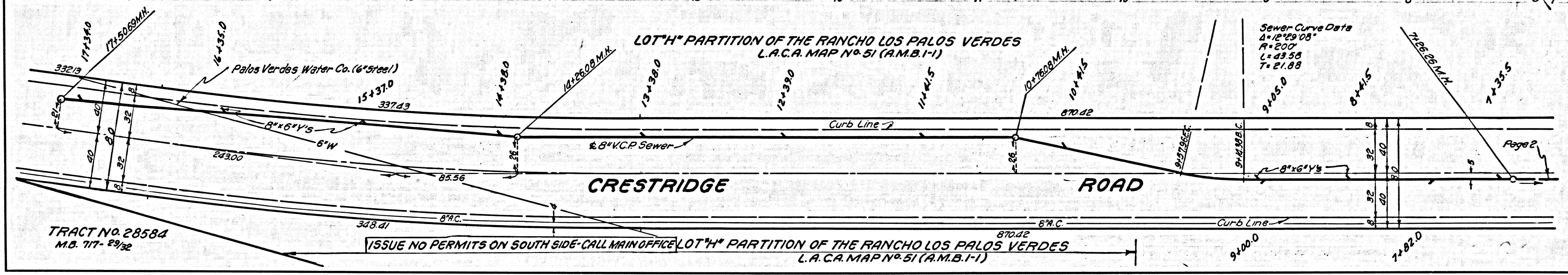
TRACT NO. 23398
 M.B. 614-5326

TRACT NO. 23399
 M.B. 620-2226



P.C. 7751 PAGE 3
 DOUBLE SCALE
 NO CHARGE FOR
 CONNECTIONS

40247



TRACT No. 28584
 M.B. 717-2932

ISSUE NO PERMITS ON SOUTH SIDE - CALL MAIN OFFICE LOT "H" PARTITION OF THE RANCHO LOS PALOS VERDES
 L.A.C.A. MAP No. 51 (A.M.B.1-1)

PAGE