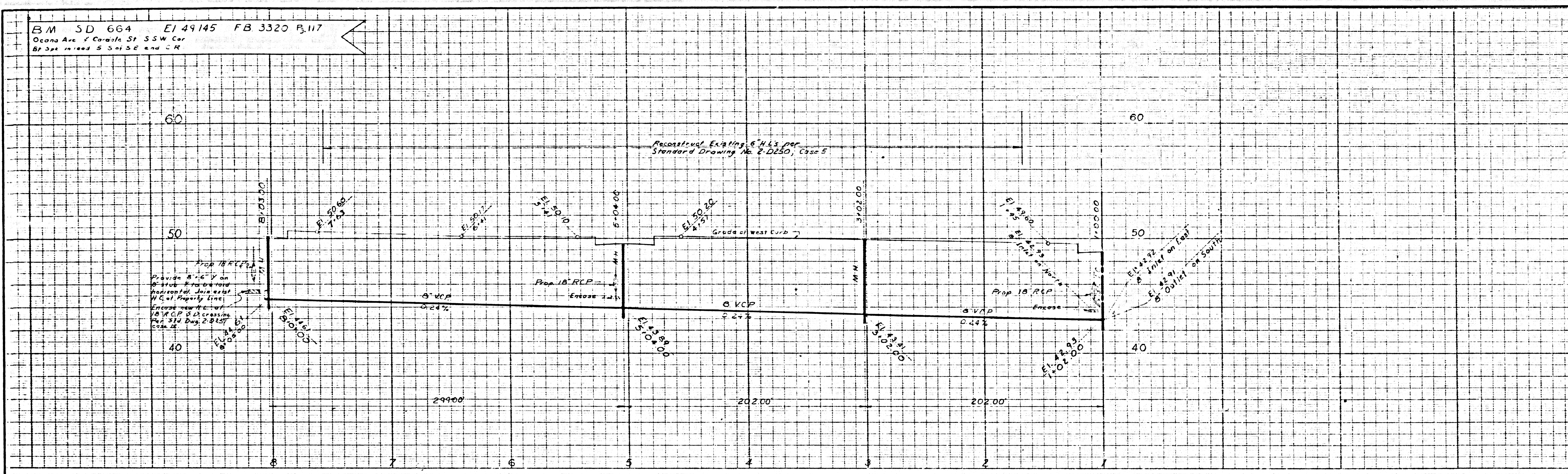


B.M. 5D 664 E1 49145 FB 3320 P.117
 Oceano Ave. & Coronado St. SSW Cor.
 Bt Spd. in road S. 54' SE and CR

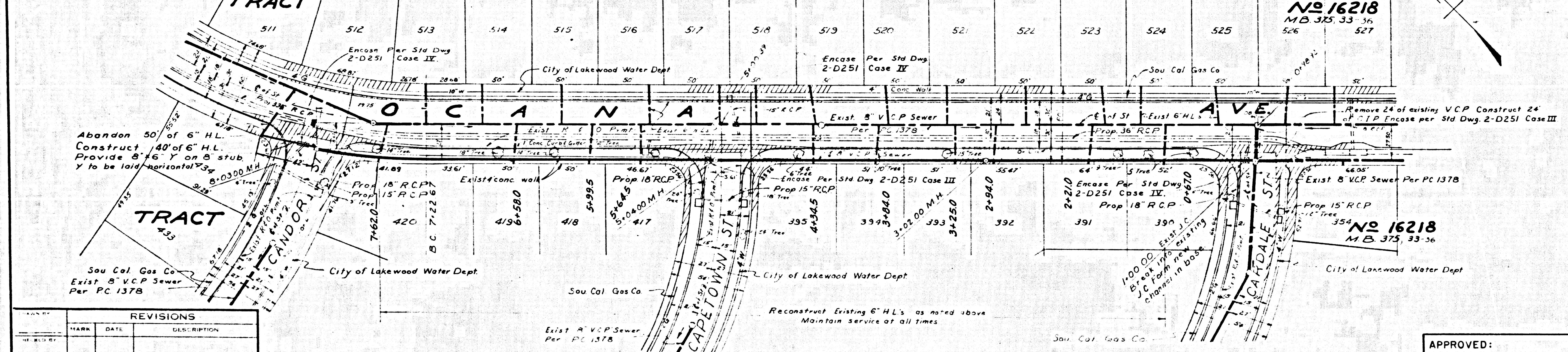
40583

GENERAL NOTES

- 1 For legend see standard plan S-1
- 2 Use extra strength vitrified clay pipe
- 3 Use mechanical compression joints for all vitrified clay pipe sewers per sections 36, 48 & 49 of Standard Sewer Specifications
- 4 All structures shall be brick sewer structures as per standard plan S-3, except where noted
- 5 Use standard manhole frames & covers per standard plan S-15
- 6 Use formula No 2 Section 54 of Standard Sewer Specifications to compute allowable leakage.
- 7 Flow to be maintained at all times
- 8 Resurface trenches within paved area of streets as noted on storm drain plans
- 9 Sanitary sewers shall be constructed according to Standard Specifications for the Construction of Sanitary Sewers as revised dated May 25, 1962, on file in the office of the County Engineer and shall be prosecuted only in the presence of the County Engineer
- 10 Remove and replace existing sidewalk per Section 67 of Standard Sewer Specifications



Sewer Curve Data
 $\Delta = 11^\circ 55' 44''$
 $R = 393.83'$
 $L = 40.31'$
 $T = 40.31'$
 $BC = 1122.67'$
 $EC = 8101.00'$



REVISIONS		
NO.	DATE	DESCRIPTION

APPROVED:
 JOHN D. PARKHURST
 CHIEF ENGINEER
 CO. SAN. DIST. NO. 3
 BY: *[Signature]*
 OFFICE ENGINEER

PREPARED BY
JOHN A. LAMBIE
 COUNTY ENGINEER
 PC. NO. 7755
 RECOMMENDED BY
[Signature]
 SANITATION DIVISION ENGINEER

1964 STORM DRAIN BOND ISSUE
 LOS ANGELES COUNTY
 FLOOD CONTROL DISTRICT

STATION	TO STA.
PLAN AND PROFILE	
RECOMMENDED BY	APPROVAL - RECOMMENDED BY
APPROVED BY	APPROVAL - RECOMMENDED BY
CHIEF ENGINEER	CHIEF ENGINEER

SCALE: HORIZ. 1" = 40'
 VERT. 1" = 4'
 DATE: _____
 DWG. NO. _____
 SHEET _____ OF _____