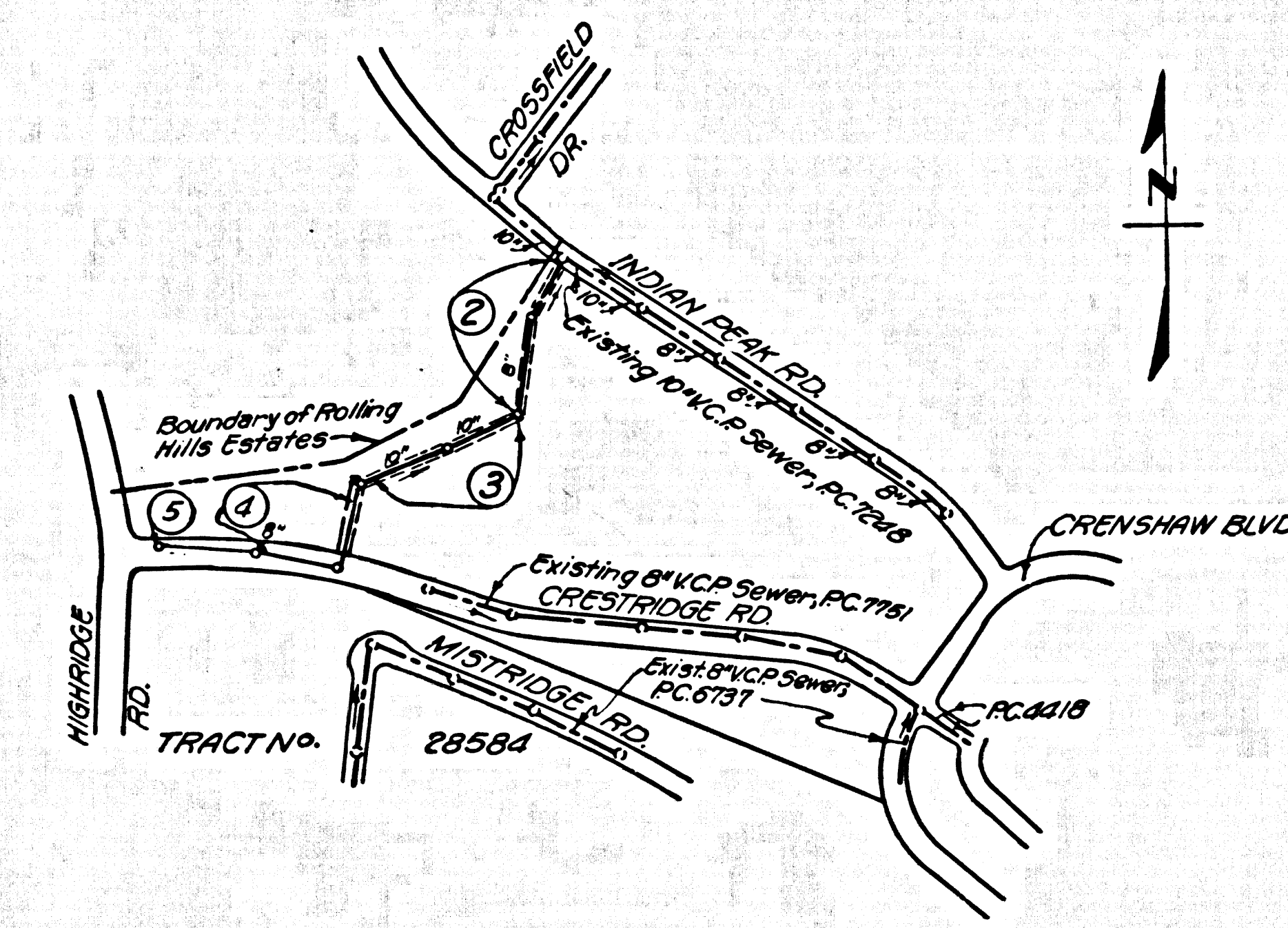


B.M. 5Y-4402 ELEV. 1201.398  
 LOS ANGELES COUNTY SURVEY MON. MNT. "B" M. 50-7  
 1955 RE 5860' IN 1/2" CONC. POST 4" ABOVE GROUND  
 @ 1/2" CONC. CREST RD. @ CRENSHAW BLVD. SP. 5' ELY  
 FROM CTR. POINT 50' N. FROM CTR. POINT 55' EAST OF  
 120136.33E UNDER SURFACE  
 PALOS VERDES QUAD. 1955



INDEX MAP  
 R/W SOUTH OF INDIAN PEAK RD.  
 P.C. 7761  
 Scale: 1"=600'

REVISION 3-25-67 DELETED  
 FLOODING NOTE ON PAGE 6  
 STR. 12+49.10 TO STR. 16+18.67  
 ADDED "PLACEMENT OF  
 CONC. ANCHORS" NOTE ON PAGE 6  
 APPROVED: [Signature]  
 3-28-67

DOUBLE SCALE  
 LOMITA BLDG. DIST. NO. 12

- NOTES:
1. PROVIDE STAKES ON THE PROPERTY LINE OR PROPERTY LINES PRODUCED AT RIGHT ANGLES TO THE SEWER LINE AT THE CENTER LINE OF EACH MANHOLE.
  2. NO REPRESENTATIVE OF THE COUNTY ENGINEER WILL SURVEY OR LAY OUT ANY PORTION OF THE WORK.
  3. THE PRIVATE ENGINEER SHALL FURNISH THE COUNTY ENGINEER WITH GRADE SHEETS AND STATIONING FOR ALL HOUSE LATERALS AND "T" BRANCHES AND SHALL PROVIDE STAKES FOR THEM AT THEIR PROPER LOCATIONS WITH STATIONING PLAINLY MARKED. ALL HOUSE LATERALS SHALL BE CONSTRUCTED IN A STRAIGHT ALIGNMENT AT RIGHT ANGLES FROM THE MAIN LINE SEWER EXCEPT AS SHOWN ON THE PLANS. HOUSE LATERALS FROM CHIMNEYS SHALL NOT HAVE AN ANGLE OF LESS THAN 45° WITH THE MAIN LINE SEWER. ANY CHANGE IN ALIGNMENT SHALL BE REQUESTED IN WRITING BY THE PRIVATE ENGINEER.
  4. THE PRIVATE ENGINEER SHALL FURNISH THE HOUSE LATERAL DEPTH AT THE PROPERTY LINE BELOW THE TOP OF CURB ELEVATION FOR EACH HOUSE LATERAL ON THE GRADE SHEET.
  5. NO REVISIONS SHALL BE MADE IN THESE PLANS WITHOUT THE APPROVAL OF THE COUNTY ENGINEER.
  6. THE CONTRACTOR SHALL NOTIFY THE CONSTRUCTION DIVISION BY TELEPHONE, MAIN ROOM 5-4747, EXT. 81387, AT LEAST TWENTY-FOUR HOURS BEFORE STARTING ANY WORK UNDER THIS CONTRACT.
  7. MANHOLES SHALL BE BRICK SEWER STRUCTURES PER S-2 PRECAST CONCRETE MANHOLES PER S-3 OR S-4 EXCEPT AS NOTED.
  8. USE STANDARD MANHOLE FRAME AND COVERS, S-1, EXCEPT AS NOTED.
  9. MANHOLE TOPS IN UNIMPROVED RIGHTS-OF-WAY TO BE SIX INCHES ABOVE FINISHED GRADE.
  10. USE EXTRA STRENGTH PIPE. ALL PIPE IS STANDARD DEPTH EXCEPT AS NOTED.
  11. USE MECHANICAL COMPRESSION JOINTS FOR ALL V.C.P. JOINTS PER SPECS., SECS. 36, 46 & 49.
  12. IF A POWER POLE IS WITHIN THREE FEET OF THE SEWER, THE SEWER SHALL BE ENCASED, PER S-23, TWO FEET ON EACH SIDE FROM THE POINT OF INTERFERENCE.
  13. IF DURING THE COURSE OF CONSTRUCTION IT IS DETERMINED THAT THERE IS LESS THAN FOUR FEET OF COVER OVER THE TOP OF A MAIN LINE OR HOUSE LATERAL V.C.P. SEWER WHICH IS NOT INDICATED ON THE PLANS, THE PIPE SHALL BE ENCASED PER S-23, UNLESS OTHERWISE APPROVED BY THE COUNTY ENGINEER.
  14. HOUSE LATERALS TO BE CONSTRUCTED WITH INVERTS AT PROPERTY LINE 4 FEET BELOW CURB GRADE EXCEPT AS NOTED.
  15. RESURFACE ALL TRENCHES WITHIN PAVED AREAS TO MEET L.A. COUNTY ROAD DEPT. OR CALIFORNIA STATE HIGHWAY REQUIREMENTS IN ACCORDANCE WITH PERMITS.
  16. FOR ALLOWABLE LEAKAGE TEST USE FORMULA NO. 2, S.P.C. 1, SEC. 54.
  17. ALL STATE AND LOCAL TRENCH SAFETY ORDERS WILL BE STRICTLY ENFORCED.

ISSUE NO HOUSE PERMITS UNTIL  
 SEWER R/W IS RECORDED

COLLECT CHARGES  
 AS INDICATED  
 [Signature]

NO RESTRICTIONS FOR THE DISPOSAL OF  
 INDUSTRIAL WASTES SHALL BE MADE BY  
 ANY INDUSTRY OR BUSINESS CONCERN  
 LOCATED WITHIN THE DISTRICTS OF THE  
 COUNTY ENGINEER AND GENERAL MANAGER  
 OF THE COUNTY SANITATION DISTRICTS.

PROFILE, ALIGNMENT AND GRADE OF P.C. 7761  
 SANITARY SEWERS PAGE 1  
 TO BE CONSTRUCTED IN

R/W SOUTH OF INDIAN PEAK ROAD  
 PRIVATE CONTRACT NO. 7761

W.S. 27  
 3 SHEETS, 5 PAGES  
 SCALE: VERT. 1"=8' HORIZ. 1"=40'  
 AUGUST, 1966  
 40248  
 PREPARED IN THE OFFICES OF  
 SIKAND ENGINEERING ASSOCIATES  
 1001 E. COLORADO BLVD., PASADENA, CALIF. 91107  
 BY: [Signature]  
 REG. C.E. NO. 9553  
 FOR LEGEND SEE PLAN NO. S-1

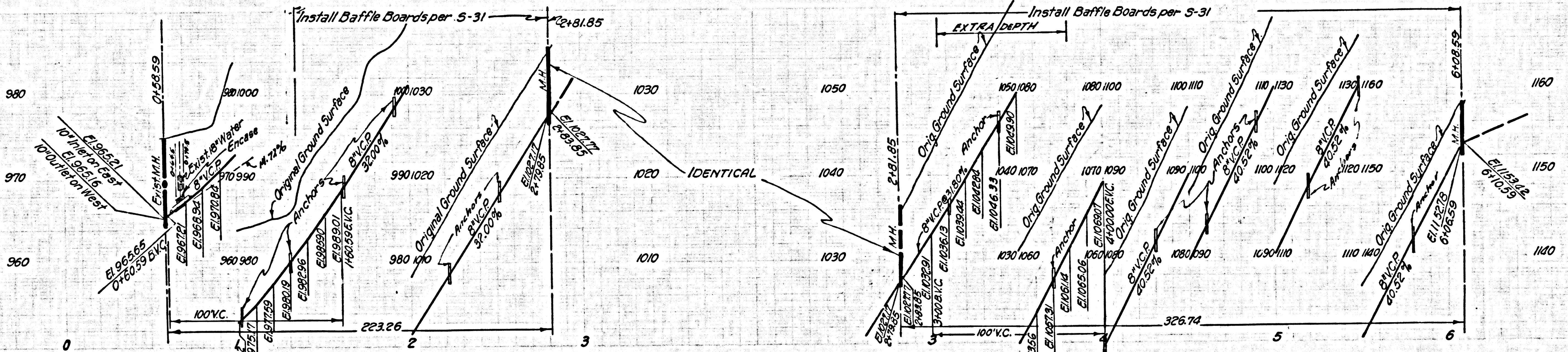
NOTE:  
 GRADES TO WHICH THIS IMPROVEMENT IS TO BE CONSTRUCTED ARE SHOWN ON PLANS AND PROFILES. GREAT POINTS FOR TOP OF CURBS, CENTER LINE OF STREETS, OR CENTER LINE OF ALLEYS ARE SHOWN BY CIRCLES ON PROFILES. AT ALL POINTS BETWEEN DESIGNATED POINTS THE GRADE SHALL BE ESTABLISHED SO AS TO CONFORM TO A STRAIGHT LINE DRAWN BETWEEN SAID DESIGNATED POINTS. ELEVATIONS ARE IN FEET ABOVE U.S.C. & G.S. SEA LEVEL DATUM OF 1929. AS REVISED  
 WORK SHALL BE CONSTRUCTED ACCORDING TO STANDARD SPECIFICATIONS DATED 12/27/55, 20822, ON FILE IN THE OFFICE OF THE COUNTY ENGINEER AND SHALL BE PROSECUTED ONLY IN THE PRESENCE OF THE COUNTY ENGINEER.  
 BEFORE WORK CAN BE STARTED, THE CONTRACTOR MUST OBTAIN A PERMIT TO EXCAVATE IN COUNTY RIGHTS FROM THE L.A. COUNTY ROAD DEPT., DISTRICT OFFICE NO. 12, AND PAY A FEE TO THE COUNTY ENGINEER, ROOM 308, COUNTY ENGINEER'S BUILDING, 100 WEST SECOND STREET OR 1912.05 HOURS/CSO/SEWER VALUE... REGIONAL OFFICE, SUFFICIENT TO COVER THE COST OF CONSTRUCTION INSPECTION AND RECORD PLANS.  
 APPROVAL OF THE PLAN BY THE COUNTY OF LOS ANGELES DOES NOT CONSTITUTE A REPRESENTATION AS TO THE ACCURACY OF THE LOCATION OR OF THE EXISTENCE OR NON-EXISTENCE OF ANY UNDERGROUND UTILITY PIPE, OR STRUCTURE WITHIN THE LIMITS OF THE PROJECT. THIS NOTE APPLIES TO ALL PAGES.  
 IF WORK IS TO BE DONE IN A STATE HIGHWAY, A PERMIT MUST BE OBTAINED FROM THE STATE OF CALIFORNIA, DIVISION OF HIGHWAYS, 120 SOUTH SPRING STREET, LOS ANGELES, CALIFORNIA.

COUNTY OF LOS ANGELES, CALIFORNIA  
 JOHN A. LAMIE, COUNTY ENGINEER J. D. PARKHURST, CHIEF ENGINEER  
 CO. SAN. DIST. NO. 12  
 APPROVED BY: [Signature] APPROVED BY: [Signature]  
 SANITATION ENGINEER REGIONAL ENGINEER  
 SUBMITTED BY: [Signature]  
 REGIONAL ENGINEER  
 CHECKED BY: [Signature]  
 REG. C.E. NO. 10653

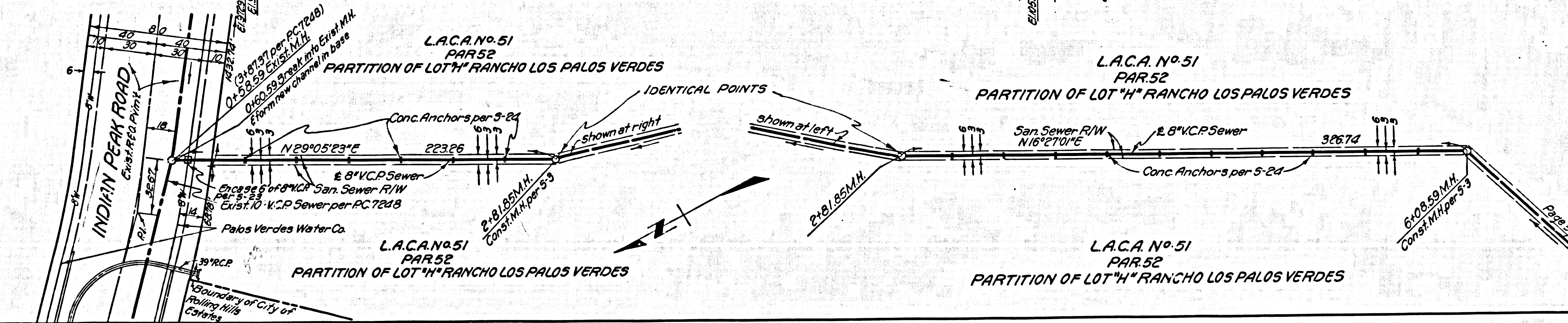
J.N. 0368.11

P.C. 7761 PAGE 2

DOUBLE SCALE  
 NO CHARGE FOR  
 CONNECTIONS



40249



DOUBLE SCALE  
NO CHARGE FOR  
CONNECTIONS

40252

