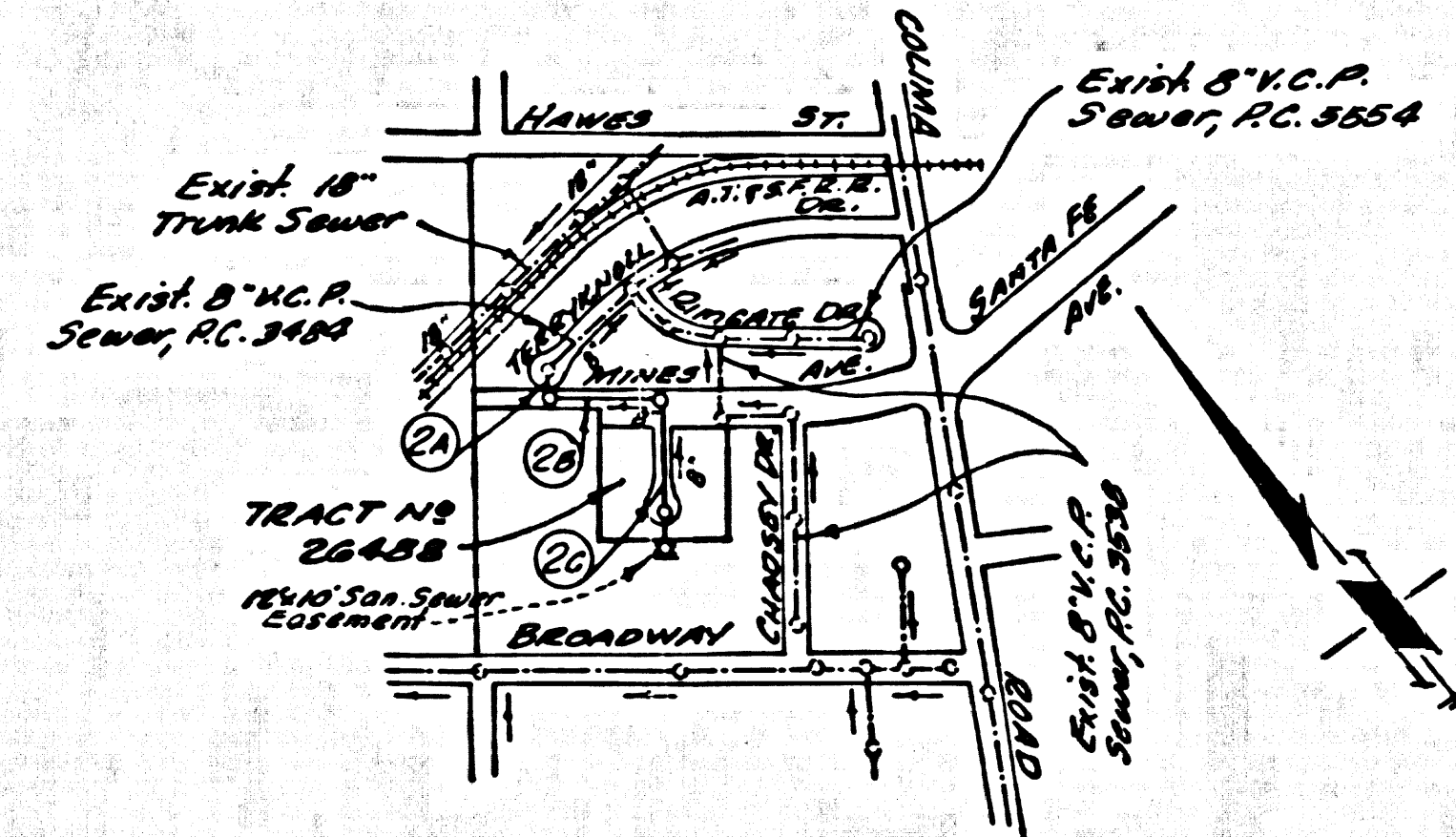


B.M. BX 1230 ELEV. 219.75E
 L. ft. N.E. Cor. Conc. Walk 20' N. E.
 Colima Rd. 453' E. Broadway
 Hse. #1090 Colima Rd.
 SANTA FE QUAD. 19 65



INDEX MAP
 TRACT NO 26488
 P.C. 7767
 SCALE: 1" = 600'

REVISION NO 2
 Page 2-C: 8" V.C.P. manhole @ Sta. 3+60.00, 1.25' N.W. 1/4. Offset into @ Sta. 3+62.00 (to offset manhole @ Sta. 2+60.00), 1.25' N.W. 1/4. Relocate manhole @ Sta. 3+70.00, 2.50' N.W. 1/4. Add 25' lin. ft. of 8" C.I.P. from Sta. 2+96 to Sta. 3+21.
KEMMERER ENGR. CO., INC.
 Robert R. Flores
 ROBERT R. FLORES Reg. Civ. Engr. No. 11339
 APPROVED: [Signature] DATE: 2-15-67
 COUNTY ENGINEER

REVISION NO 1
 Page 2-A: Lower invert elevations of existing Manhole @ Sta. 0+00.00. Raise grade between Sta. 0+02.00 & Sta. 0+12.00. Show break-in @ Sta. 0+02.00
 Page 2-C: Relocate 4" N.W. 1/4 to Lots 5 & 6 from Kane Ave. to Cusumant St. of Kane Ave.
KEMMERER ENGR. CO., INC.
 Robert R. Flores
 ROBERT R. FLORES Reg. Civ. Engr. No. 11339
 APPROVED: [Signature] DATE: 1-19-67
 COUNTY ENGINEER

WHITTIER BLDG. DIST. NO. 11.00

- NOTE:
1. PROFILE STAKES ON THE PROPERTY LINE OR PROPERTY LINES PRODUCED AT RIGHT ANGLES TO THE SEWER LINE AT THE CENTER LINE OF EACH MANHOLE.
 2. NO REPRESENTATIVE OF THE COUNTY ENGINEER WILL SURVEY OR LAY OUT ANY PORTION OF THE WORK.
 3. THE PRIVATE ENGINEER SHALL FURNISH THE COUNTY ENGINEER WITH GRADE SHEETS AND STATIONING FOR ALL HOUSE LATERALS AND "T" BRANCHES AND SHALL PROVIDE STAKES FOR THEM AT THEIR PROPER LOCATIONS WITH STATIONING PLAINLY MARKED. ALL HOUSE LATERALS SHALL BE CONSTRUCTED IN A STRAIGHT ALIGNMENT AT RIGHT ANGLES FROM THE MAIN LINE SEWER EXCEPT AS SHOWN ON THE PLANS.
 4. ANY CHANGE IN ALIGNMENT SHALL BE REQUESTED IN WRITING BY THE PRIVATE ENGINEER.
 5. THE PRIVATE ENGINEER SHALL FURNISH THE HOUSE LATERAL DEPTH AT THE PROPERTY LINE BELOW THE TOP OF CURB ELEVATION FOR EACH HOUSE LATERAL ON THE GRADE SHEET.
 6. NO REVISIONS SHALL BE MADE IN THESE PLANS WITHOUT THE APPROVAL OF THE COUNTY ENGINEER.
 7. THE CONTRACTOR SHALL NOTIFY THE CONSTRUCTION DIVISION BY TELEPHONE, MADISON 9-07, EXT. 81331, AT LEAST TWENTY-FOUR HOURS BEFORE STARTING ANY WORK UNDER THIS CONTRACT.
 8. MANHOLES SHALL BE BRICK SEWER STRUCTURES PER S-5.
 9. USE STANDARD MANHOLE FRAMES AND COVERS, S-5.
 10. MANHOLE TOPS IN UNIMPROVED AREAS TO BE TO BE SIX INCHES ABOVE FINISHED GRADE.
 11. USE EXTRA STRENGTH PIPE. ALL PIPE IS STANDARD DEPTH EXCEPT AS NOTED.
 12. USE MECHANICAL COMPRESSION JOINTS FOR ALL V.C.P. JOINTS PER SPECS., SECS. 36, 40 & 41.
 13. IF A POWER POLE IS WITHIN THREE FEET OF THE SEWER, THE SEWER SHALL BE ENCASED, PER S-23, TWO FEET ON EACH SIDE FROM THE POINT OF INTERFERENCE.
 14. IF DURING THE COURSE OF CONSTRUCTION IT IS DETERMINED THAT THERE IS LESS THAN FOUR FEET OF COVER OVER THE TOP OF A MAIN LINE OR HOUSE LATERAL V.C.P. SEWER WHICH IS NOT INDICATED ON THE PLANS, THE PIPE SHALL BE ENCASED PER S-23, UNLESS OTHERWISE APPROVED BY THE COUNTY ENGINEER.
 15. HOUSE LATERALS TO BE CONSTRUCTED WITH HYVETS AT PROPERTY LINE 4 FEET BELOW CURB GRADE, EXCEPT AS NOTED.
 16. RESURFACE ALL TRENCHES WITHIN PAVED AREAS TO MEET L.A. COUNTY ROAD DEPT. OR CALIFORNIA STATE HIGHWAY REQUIREMENTS IN ACCORDANCE WITH PERMITS.
 17. FOR ALLOWABLE LEAKAGE TEST USE FORMULA NO. 2, SPEC. S, SEC. 34.
 18. ALL STATE AND LOCAL TRENCH SAFETY ORDERS WILL BE STRICTLY ENFORCED.
 19. ALL C.I.P. SHALL BE CLASS 150 OR BETTER.
 20. ALL C.I.P. JOINTS SHALL BE "TYTON" JOINTS OR EQUAL APPROVED BY THE COUNTY ENGINEER. SEE SPEC. SEC. 36.
 21. ALL C.I.P. TO V.C.P. JOINTS SHALL BE MADE WITH A RUBBER SLEEVE JOINT (WITH HOOP IF NECESSARY) PER STA. SPECS., SEC. 36, OR APPROVED EQUAL.
 22. BACKFILL IN LOT 5 (PAGE 8C) FROM STA 2+90 TO STA 3+30 SHALL MEET THE REQUIREMENT OF THE DEPT. OF BLAS & SAFETY.

COLLECT CHARGES AS INDICATED
 Robert R. Flores 12-20-66

NO CONNECTIONS FOR THE DISPOSAL OF INDUSTRIAL WASTES SHALL BE MADE TO SEWERS SHOWN ON THESE DRAWINGS WITHOUT WRITTEN PERMISSION FROM THE CHIEF ENGINEER AND GENERAL MANAGER OF THE COUNTY SANITATION DISTRICT

PROFILE, ALIGNMENT AND GRADE OF P.C. 7767
 SANITARY SEWERS PAGE 1
 TO BE CONSTRUCTED IN

TRACT NO 26488

PRIVATE CONTRACT NO. 7767

W.S. 34
 1 SHEET OF 2 PAGES
 SCALE: VERT. 1" = 4' HORIZ. 1" = 40' DEC. 1, 1966

PREPARED IN THE OFFICES OF
KEMMERER ENGINEERING CO., INC.
 145 NORTH PINE AVE. WHITTIER, CALIF.
 BY: Robert R. Flores
 REG. C. E. NO. 11339

FOR LEGEND SEE PLAN NO. S-1

NOTE:
 GRADES TO WHICH THE IMPROVEMENT IS TO BE CONSTRUCTED ARE SHOWN ON PLANS AND PROFILES. GRADE POINTS FOR TOP OF CURBS, CENTER LINE OF STREETS, OR CENTER OF ALLEY, ARE SHOWN BY CIRCLES ON PROFILES. AT ALL POINTS BETWEEN DESIGNATED POINTS THE GRADE SHALL BE ESTABLISHED SO AS TO CONFORM TO A STRAIGHT LINE DRAWN BETWEEN SAID DESIGNATED POINTS. ELEVATIONS ARE IN FEET ABOVE U.S.C. & G.S. MEAN SEA LEVEL DATUM OF 1929.
 THIS DRAWING AND THE DATA HEREON ARE HEREBY MADE A PART OF THE SPECIFICATIONS BATED 1962, 22, 1966, ON FILE IN THE OFFICE OF THE COUNTY ENGINEER AND SHALL BE PRODUCTION COPY IN THE PRESENCE OF THE COUNTY ENGINEER.
 BEFORE WORK CAN BE STARTED, THE CONTRACTOR MUST OBTAIN A PERMIT TO EXCAVATE IN COUNTY STREETS FROM THE L.A. COUNTY ROAD DEPT., DISTRICT OFFICE NO. 10, 100 SOUTH MAIN ST., LOS ANGELES, CALIF. AND A PERMIT TO EXCAVATE IN COUNTY STREETS FROM THE L.A. COUNTY HEALTH DEPARTMENT, DISTRICT OFFICE NO. 10, 100 SOUTH MAIN ST., LOS ANGELES, CALIF. REGIONAL OFFICE, SUPPLEMENT TO COVER THE COST OF CONSTRUCTION INSPECTOR AND RECORD PLANS.
 APPROVAL OF THIS PLAN BY THE COUNTY OF LOS ANGELES DOES NOT CONSTITUTE A REPRESENTATION AS TO THE ACCURACY OF THE LOCATION OR THE EXISTENCE OR NON-EXISTENCE OF ANY UNDERGROUND UTILITY PIPE, OR STRUCTURE WITHIN THE LIMITS OF THE PROJECT. THIS NOTE APPLIES TO ALL PAGES.
 IF WORK IS TO BE DONE IN A STATE HIGHWAY, A PERMIT MUST BE OBTAINED FROM THE STATE OF CALIFORNIA, DIVISION OF HIGHWAYS, 120 SOUTH BRANDEG STREET, LOS ANGELES, CALIFORNIA.

COUNTY OF LOS ANGELES, CALIFORNIA
 JOHN A. LAMBIE, COUNTY ENGINEER I. D. PARKURST, CHIEF ENGINEER
 CO. SAN. DIST. NO. 11

APPROVED BY: [Signature] ASSISTANT SANITATION ENGINEER
 APPROVED BY: [Signature] OFFICE ENGINEER
 SUBMITTED BY: [Signature] 425 CORONADO REGIONAL ENGINEER, E.C.E. NO. 10327
 CHECKED BY: [Signature] REG. C.E. NO. 15731

J.N. 0250.02

