

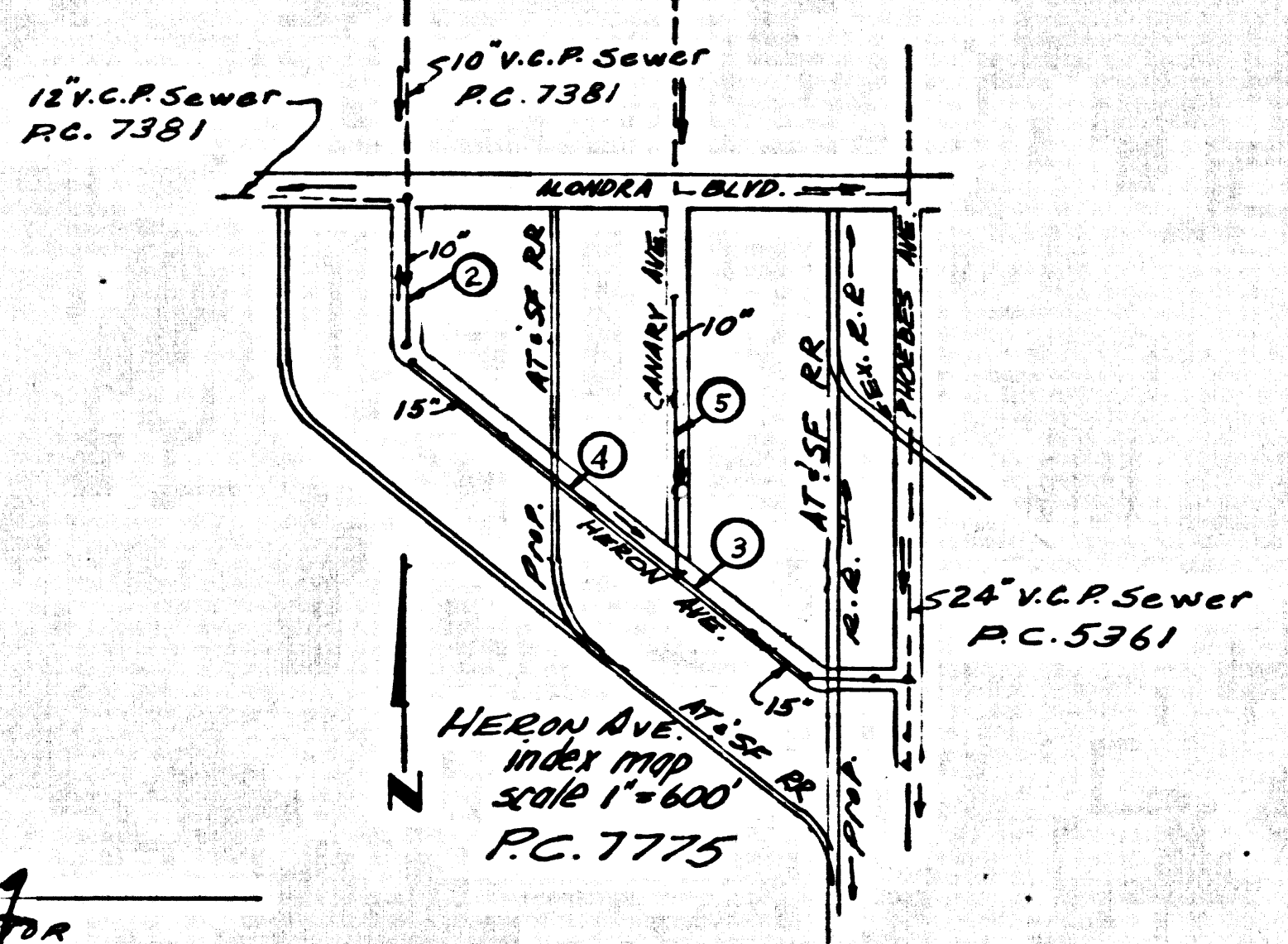
B.M. SY 2769 ELEV. 60.431  
 STD. U.S.G.S. DISK STAMPED 62-1914-63T33 AT NW  
 COR. SPRR CONC. CULV. BRIDGE 26 E E  
 VALLEY VIEW AVE. 5+ MO N. RAIL 500'  
 S D & FIRESTONE BLVD  
 BASE LINE QUAD. 19.55

**REVISION No. 1**  
 CHANGE ALIGNMENT OF SEWER PAGE 3 + 4  
 STA. 8450.00 TO STA. 17425.00  
 CHANGE ALIGNMENT OF SEWER PAGE 6  
 STA. 04100 TO STA. 24775  
 BY: *Charles E. McCollin*  
 APPROVED: *Charles E. McCollin* 9/16/67  
 R.C.E. 15751 OFFICE OF CITY ENGINEER

**REVISION No. 2**  
 Add 6" H.L. AT STA. 8470.2, 14625  
 APPROVED: *Charles E. McCollin* 9/16/67  
 R.C.E. 15751 OFFICE OF CITY ENGINEER

ISSUE NO CONNECTION PERMITS UNTIL  
 STREETS HAVE BEEN ACCEPTED BY THE  
 CITY OF LA MIRADA.

CITY OF LA MIRADA  
 APPROVED: *Charles J. Kling*  
 ASST. CITY ADMINISTRATOR



LA MIRADA BLDG. DIST. NO. 4.08

PROFILE ALIGNMENT AND GRADE OF  
 SANITARY SEWERS PAGE 1 P.C. 7775

TO BE CONSTRUCTED IN  
 HERON AVENUE. 39357

PRIVATE CONTRACT NO. 7775

W.S. 34  
 3 SHEETS, 5 PAGES

SCALE: VERT. 1"=4' HORIZ. 1"=40'

DATE: DECEMBER, 1966

PREPARED BY THE OFFICES OF  
 ABELL AND COUGHLIN  
 5638 1/2 E. BEVERLY BLVD.  
 LOS ANGELES, CALIF.  
*John S. Coughlin*  
 REG. C. E. NO. 11978

FOR LEGEND SEE PLAN NO. 5-1

- NOTES:
1. HOUSE STAGES ON THE PROPERTY LINE OR PROPERTY LINES PRODUCED AT RIGHT ANGLES TO THE SEWER LINE AT THE CENTER LINE OF EACH MANHOLE.
  2. NO REPRESENTATIVE OF THE CITY ENGINEER WILL SURVEY OR LAY OUT ANY PORTION OF THE WORK.
  3. THE PRIVATE ENGINEER SHALL FURNISH THE CITY ENGINEER WITH GRADE SHEETS AND STATIONING FOR ALL HOUSE LATERALS AND Y BRANCHES AND SHALL PROVIDE STAKES FOR THEM AT THEIR PROPER LOCATIONS WITH STATIONING PLAINLY MARKED. ALL HOUSE LATERALS SHALL BE CONSTRUCTED IN A STATIONARY ALIGNMENT AT RIGHT ANGLES FROM THE MAIN LINE SEWER EXCEPT AS SHOWN ON THE PLANS. HOUSE LATERALS FROM CHIMNEYS SHALL NOT HAVE AN ANGLE OF LESS THAN 45° WITH THE MAIN LINE SEWER. ANY CHANGE IN ALIGNMENT SHALL BE REQUESTED BY WRITING BY THE PRIVATE ENGINEER.
  4. THE PRIVATE ENGINEER SHALL FURNISH THE HOUSE LATERAL DEPTH AT THE PROPERTY LINE BELOW THE TOP OF CURB ELEVATION FOR EACH HOUSE LATERAL ON THE GRADE SHEET.
  5. NO REVISIONS SHALL BE MADE IN THESE PLANS WITHOUT THE APPROVAL OF THE CITY ENGINEER.
  6. THE CONTRACTOR SHALL NOTIFY THE CONSTRUCTION DIVISION BY TELEPHONE, MADISON 9-4747, EXT. 8128, AT LEAST TWENTY-FOUR HOURS BEFORE STARTING ANY WORK UNDER THIS CONTRACT.
  7. ALL STRUCTURES SHALL BE EITHER BRICK M.H.'S PER S-3 OR PRECAST CONG. M.H.'S PER S-5 OR S-6.
  8. USE STANDARD MANHOLE FRAMES AND COVERS, S-15.
  9. USE EXTRA STRENGTH PIPE. ALL PIPE IS STANDARD DEPTH.
  10. USE MECHANICAL COMPRESSION JOINTS FOR ALL V.C.P. JOINTS PER SPECS. SECS. 34, 41, AND 48.
  11. IF A POWER POLE IS WITHIN THREE FEET OF THE SEWER, THE SEWER SHALL BE ENCASED, PER S-2-3, TWO FEET ON EACH SIDE FROM THE POINT OF INTERFERENCE.
  12. IF DURING THE COURSE OF CONSTRUCTION IT IS DETERMINED THAT THERE IS LESS THAN FOUR FEET OF COVER OVER THE TOP OF A MAIN LINE OR HOUSE LATERAL V.C.P. SEWER WHICH IS NOT INDICATED ON THE PLANS, THE PIPE SHALL BE ENCASED PER S-2-3 UNLESS OTHERWISE APPROVED BY THE CITY ENGINEER.
  13. HOUSE LATERALS TO BE CONSTRUCTED WITH INVERTS AT 1/4" RISE PER FOOT TO PROPERTY LINE.
  14. RESURFACE ALL TRENCHES WITHIN PAVED AREAS TO MEET L.A. COUNTY ROAD DEPT. OR CALIFORNIA STATE HIGHWAY REQUIREMENTS IN ACCORDANCE WITH PERMITS.
  15. FOR ALLOWABLE LEAKAGE TEST USE FORMULA NO. 1, SPECS. SEC. 84.
  16. SPECIAL BACKFILL SHALL BE SEGREGATED BASE MATERIAL, COMPACTED IN PLACE TO THE SATISFACTION OF THE SANTA FE ENGINEER AND THE CITY ENGINEER.
  17. ALL C.I.P. SHALL BE CLASS 150 OR BETTER.
  18. ALL C.I.P. JOINTS SHALL BE MECHANICAL SLIP JOINTS OF THE "TYTON" TYPE OR APPROVED EQUAL PER SPECS. SECS. 36 AND 40.
  19. ALL JOINTS BETWEEN C.I.P. AND V.C.P. SHALL BE MADE WITH A RUBBER SLEEVE (WITH HOOPS IF NECESSARY) PER SPECS. SEC. 34 OR APPROVED EQUAL.
  20. ALL STATE AND LOCAL TRENCH SAFETY ORDERS WILL BE STRICTLY ENFORCED.

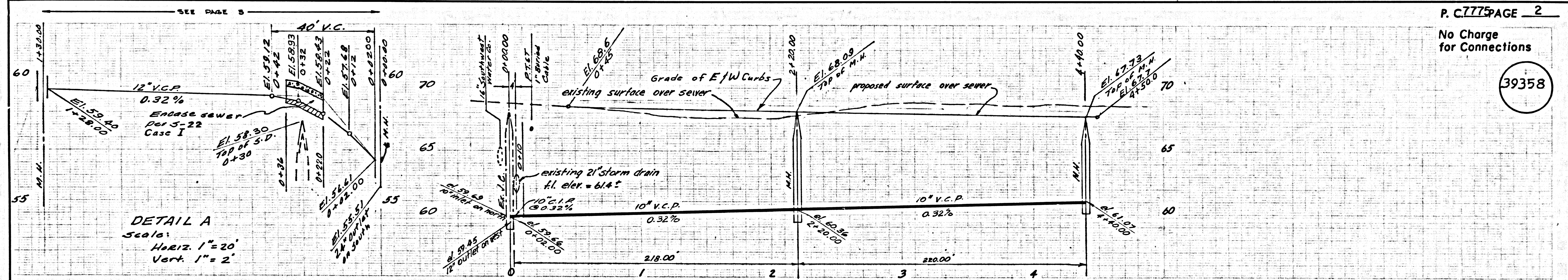
NO CONNECTIONS FOR THE DISPOSAL OF  
 INDUSTRIAL WASTES SHALL BE MADE TO  
 SEWERS SHOWN ON THESE DRAWINGS  
 WITHOUT WRITTEN PERMISSION FROM THE  
 CHIEF ENGINEER AND GENERAL MANAGER  
 OF THE COUNTY SANITATION DISTRICTS.

COLLECT CHARGES  
 AS INDICATED  
*W.M. Smith*

REVIEWED: *Richard M. Cron*  
 INDUSTRIAL WASTE DIV.

GRADES TO WHICH THIS IMPROVEMENT IS TO BE CONSTRUCTED ARE SHOWN ON PLANS AND PROFILES. GRADE POINTS FOR TOP OF CURBS, CENTER LINE OF STREETS, OR CENTER LINE OF ALLEYS ARE SHOWN BY CIRCLES ON PROFILES. AT ALL POINTS BETWEEN DESIGNATED POINTS THE GRADE SHALL BE ESTABLISHED SO AS TO COMFORM TO A STRAIGHT LINE DRAWN BETWEEN SAID DESIGNATED POINTS. REVISIONS ARE IN PINK ABOVE U.S.C. & G.S. 1854 EDITION OF 1927. THIS DRAWING AND THE DATA HEREON ARE HEREBY MADE A PART OF THE SPECIFICATIONS. ANY CHANGES TO BE MADE TO THE WORK SHALL BE CONSTRUCTED ACCORDING TO STANDARD SPECIFICATIONS DATED JAN. 23, 1958, ON FILE IN THE OFFICE OF THE CITY ENGINEER AND SHALL BE PROSECUTED ONLY IN THE PRESENCE OF THE CITY ENGINEER. CITY STREETS FROM THE L.A. COUNTY ROAD DEPT., DISTRICT OFFICE NO. 1, AND MAKE A DEPOSIT WITH THE CITY OF LA MIRADA, 15004 LA MIRADA BLVD., EMPLOYMENT TO COVER THE COST OF CONSTRUCTION INSPECTION AND RECORD PLANS. APPROVAL OF THIS PLAN BY THE CITY OF LA MIRADA DOES NOT CONSTITUTE A REPRESENTATION AS TO THE ACCURACY OF THE LOCATION OF OR THE EXISTENCE OR NON-EXISTENCE OF ANY UNDERGROUND UTILITY PIPE, OR STRUCTURE WITHIN THE LIMITS OF THIS PROJECT. THIS NOTE APPLIES TO ALL PAGES. IF WORK IS TO BE DONE IN A STATE HIGHWAY, A PERMIT MUST BE OBTAINED FROM THE STATE OF CALIFORNIA, DIVISION OF HIGHWAYS, 126 SOUTH SPRING STREET, LOS ANGELES, CALIFORNIA.

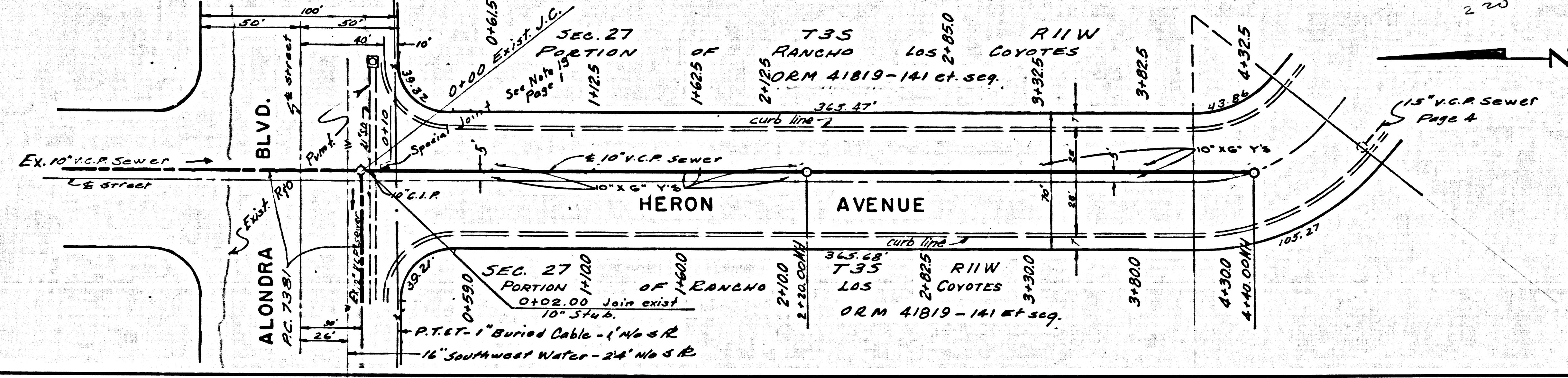
CITY OF LA MIRADA, CALIFORNIA  
 JOHN A. LAMBIE, CITY ENGINEER J. D. PARKURST, CHIEF ENGINEER  
 CO. SAN. DIST. NO. 35  
 APPROVED BY: *Richard M. Cron* ASSISTANT SANITATION ENGINEER APPROVED BY: *John S. Coughlin* CHIEF ENGINEER  
 SUBMITTED BY: *John S. Coughlin* CHIEF ENGINEER  
 CHECKED BY: *Charles E. McCollin* CHIEF ENGINEER  
 REG. C. E. NO. 15931



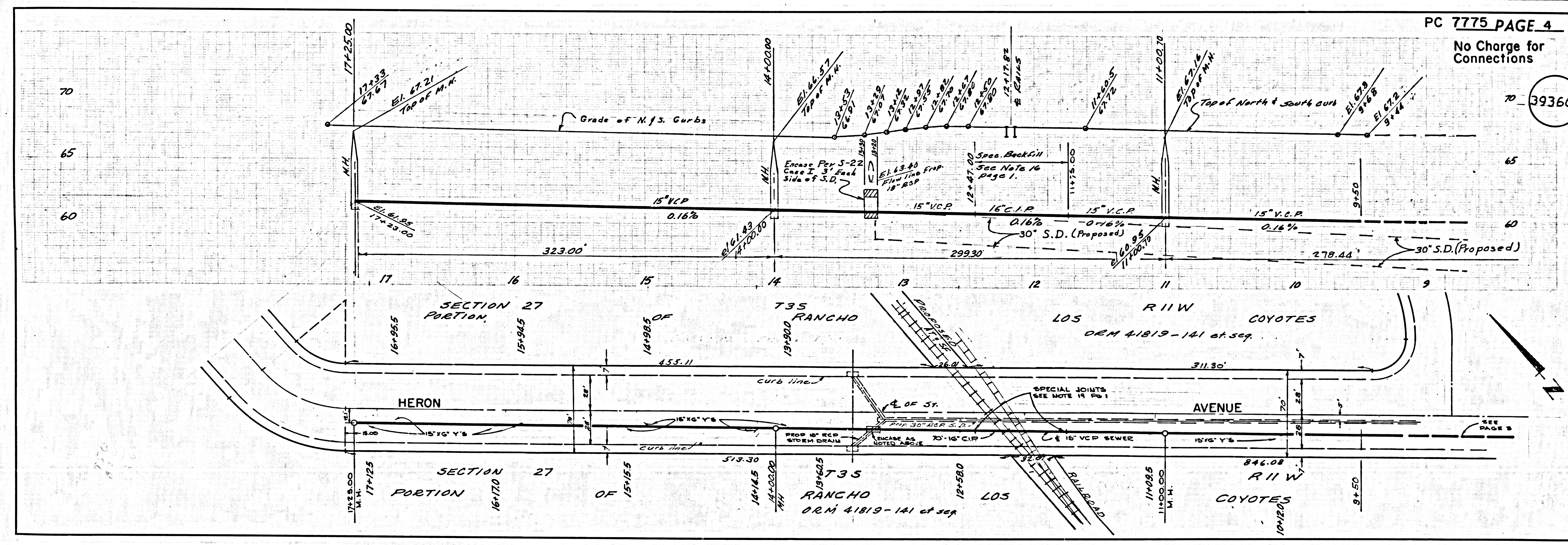
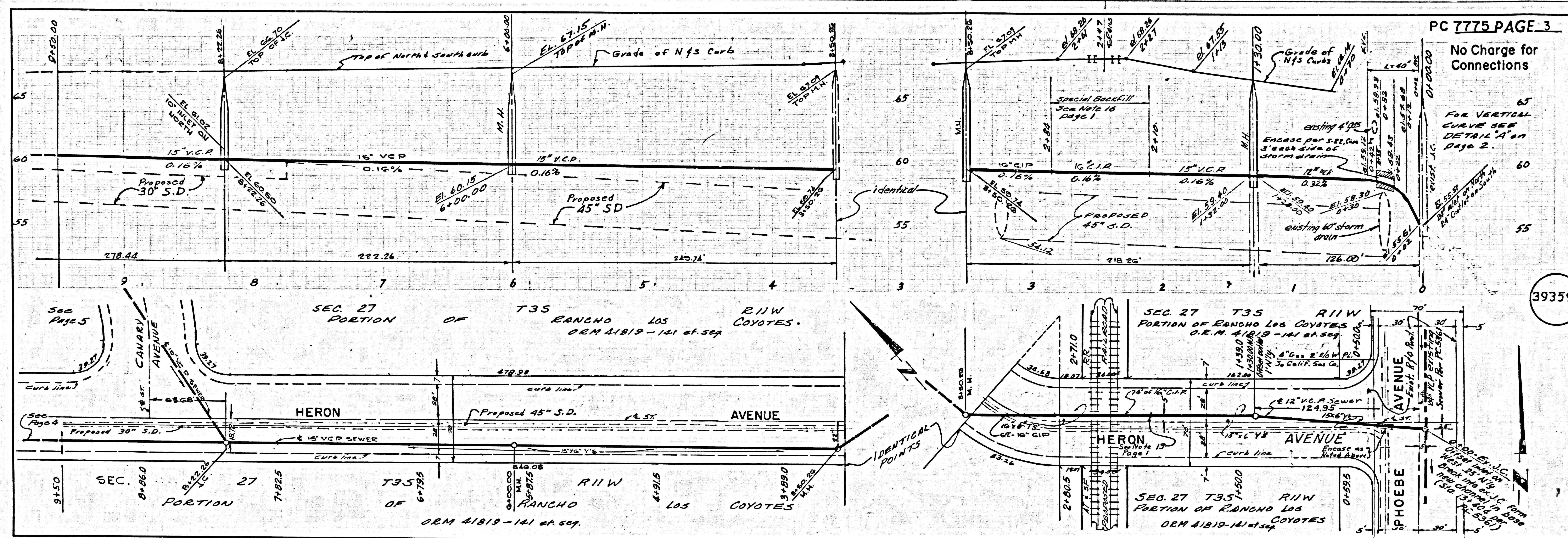
P. C. 7775 PAGE 2

No Charge for Connections

39358









No Charge for Connections

39361

