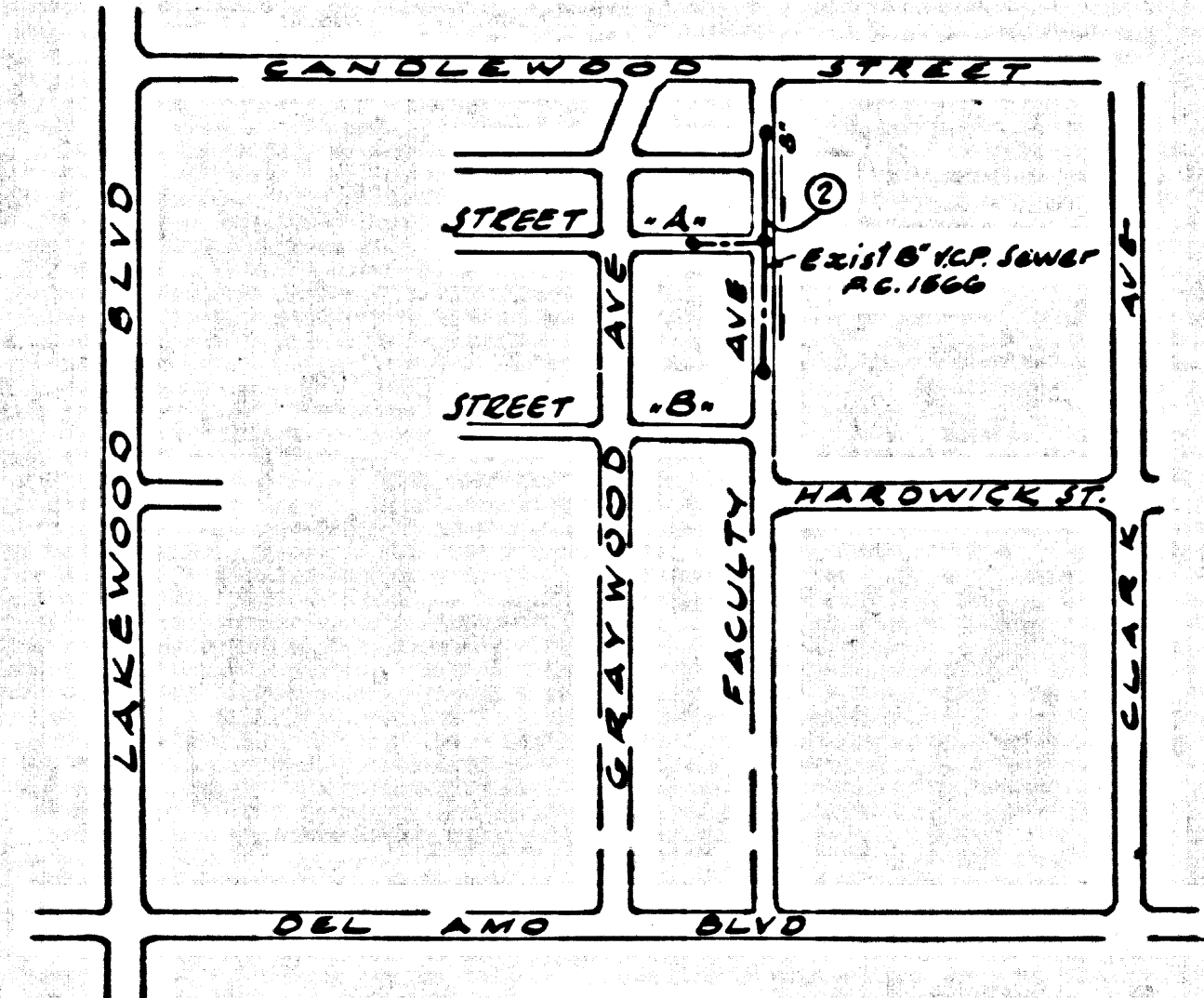


B.M. S.Y. 4902 ELEV. 47.690  
 L&TS C6 1/2 W/O B.C.R. at  
 SW cor. Clark Ave &  
 Del Amo Blvd. 40' x 30'  
 W/O & Mt. Lakewood Quad  
 1900 Adj.



PC. 7779  
 Faculty Ave  
 Index Map  
 Scale 1" = 600'

**PRIVATE ENGINEER'S  
 NOTICE TO CONTRACTOR**  
 THE ACCURACY AND LOCATION OF ANY UNDERGROUND UTILITY PIPES OR STRUCTURES SHOWN ON THESE PLANS ARE OBTAINED BY A SEARCH OF THE AVAILABLE RECORDS TO THE BEST OF OUR KNOWLEDGE. WHERE ANY NO EXISTING UTILITIES EXCEPT AS SHOWN ON THIS MAP, THE CONTRACTOR IS REQUIRED TO TAKE PRECAUTIONARY MEASURES TO PROTECT THE UTILITY LINES SHOWN AND ANY OTHER LINES NOT OF RECORD OR NOT SHOWN ON THIS DRAWING.

**LAKEWOOD BLDG. DIST. NO. 4.01**

- NOTE:
1. HOUSE STAKES ON THE PROPERTY LINE OR PROPERTY LINES PRODUCED AT RIGHT ANGLES TO THE SEWER LINE AT THE CENTER LINE OF EACH MANHOLE.
  2. NO REPRESENTATIVE OF THE CITY ENGINEER WILL SURVEY OR LAY OUT ANY PORTION OF THE WORK.
  3. THE PRIVATE ENGINEER SHALL FURNISH THE CITY ENGINEER WITH GRADE SHEETS AND STATIONING FOR ALL HOUSE LATERALS AND Y BRANCHES AND SHALL PROVIDE STAKES FOR THEM AT THEIR PROPER LOCATIONS WITH STATIONING PLAINLY MARKED. ALL HOUSE LATERALS SHALL BE CONSTRUCTED BY A STRAIGHT ALIGNMENT AT RIGHT ANGLES FROM THE MAIN LINE SEWER EXCEPT AS SHOWN ON THE PLANS.
  4. THE PRIVATE ENGINEER SHALL FURNISH THE HOUSE LATERAL DEPTH AT THE PROPERTY LINE BELOW THE TOP OF CURB ELEVATION FOR EACH HOUSE LATERAL ON THE GRADE SHEET.
  5. NO REVISIONS SHALL BE MADE IN THESE PLANS WITHOUT THE APPROVAL OF THE CITY ENGINEER.
  6. THE CONTRACTOR SHALL NOTIFY THE CONSTRUCTION DIVISION BY TELEPHONE, MADISON 9-4747, EXT. 8158, AT LEAST TWENTY-FOUR HOURS BEFORE STARTING ANY WORK UNDER THE CONTRACT.
  7. MANHOLES SHALL BE BRICK SEWER STRUCTURES PER S-2. APPROVED FORMS MANHOLE S-2, S-3, S-4, S-5, S-6, S-7, S-8, S-9, S-10, S-11, S-12, S-13, S-14, S-15, S-16, S-17, S-18, S-19, S-20, S-21, S-22, S-23, S-24, S-25, S-26, S-27, S-28, S-29, S-30, S-31, S-32, S-33, S-34, S-35, S-36, S-37, S-38, S-39, S-40, S-41, S-42, S-43, S-44, S-45, S-46, S-47, S-48, S-49, S-50, S-51, S-52, S-53, S-54, S-55, S-56, S-57, S-58, S-59, S-60, S-61, S-62, S-63, S-64, S-65, S-66, S-67, S-68, S-69, S-70, S-71, S-72, S-73, S-74, S-75, S-76, S-77, S-78, S-79, S-80, S-81, S-82, S-83, S-84, S-85, S-86, S-87, S-88, S-89, S-90, S-91, S-92, S-93, S-94, S-95, S-96, S-97, S-98, S-99, S-100.
  8. USE STANDARD MANHOLE FRAMES AND COVERS, S-18, S-19, S-20, S-21, S-22, S-23, S-24, S-25, S-26, S-27, S-28, S-29, S-30, S-31, S-32, S-33, S-34, S-35, S-36, S-37, S-38, S-39, S-40, S-41, S-42, S-43, S-44, S-45, S-46, S-47, S-48, S-49, S-50, S-51, S-52, S-53, S-54, S-55, S-56, S-57, S-58, S-59, S-60, S-61, S-62, S-63, S-64, S-65, S-66, S-67, S-68, S-69, S-70, S-71, S-72, S-73, S-74, S-75, S-76, S-77, S-78, S-79, S-80, S-81, S-82, S-83, S-84, S-85, S-86, S-87, S-88, S-89, S-90, S-91, S-92, S-93, S-94, S-95, S-96, S-97, S-98, S-99, S-100.
  9. MANHOLE TOPS BE ...
  10. USE EXTRA STRENGTH PIPE FOR ALL PIPES IN EXTRA DEPTH ...
  11. USE ARCHIMEDIC COMPRESSION JOINTS FOR ALL U.C.P. JOINTS PER STD. SPEC'S ...
  12. ...
  13. IF A POWER POLE IS WITHIN THREE FEET OF THE SEWER, THE SEWER SHALL BE ENCASED, PER S-23 TWO FEET ON EACH SIDE FROM THE POINT OF INTERFERENCE.
  14. IF DURING THE COURSE OF CONSTRUCTION IT IS DETERMINED THAT THERE IS LESS THAN FOUR FEET OF COVER OVER THE TOP OF A MAIN LINE OR HOUSE LATERAL U.C.P. SEWER WHICH IS NOT INDICATED ON THE PLANS, THE PIPE SHALL BE ENCASED PER S-23 UNLESS OTHERWISE APPROVED BY THE CITY ENGINEER.
  15. HOUSE LATERALS TO BE CONSTRUCTED WITH INVERTS AT 1/4" PER FOOT TO THE POINT TO THE SEWER MAIN LINE.
  16. RESURFACE ALL TRENCHES WITH PAVED AREAS TO MEET L.A. COUNTY ROAD DEPT. OR CALIFORNIA STATE HIGHWAY REQUIREMENTS IN ACCORDANCE WITH PERMITS.
  17. SEWERS TO BE TESTED FOR LEAKAGE PER FORMULA A-2, SEC. 84 OF STD. SPEC'S.
  18. ALL SITE AND LOCAL TRENCH SAFETY ORDERS WILL BE STRICTLY ENFORCED.

**COLLECT CHARGES  
 AS INDICATED**  
*[Signature]*

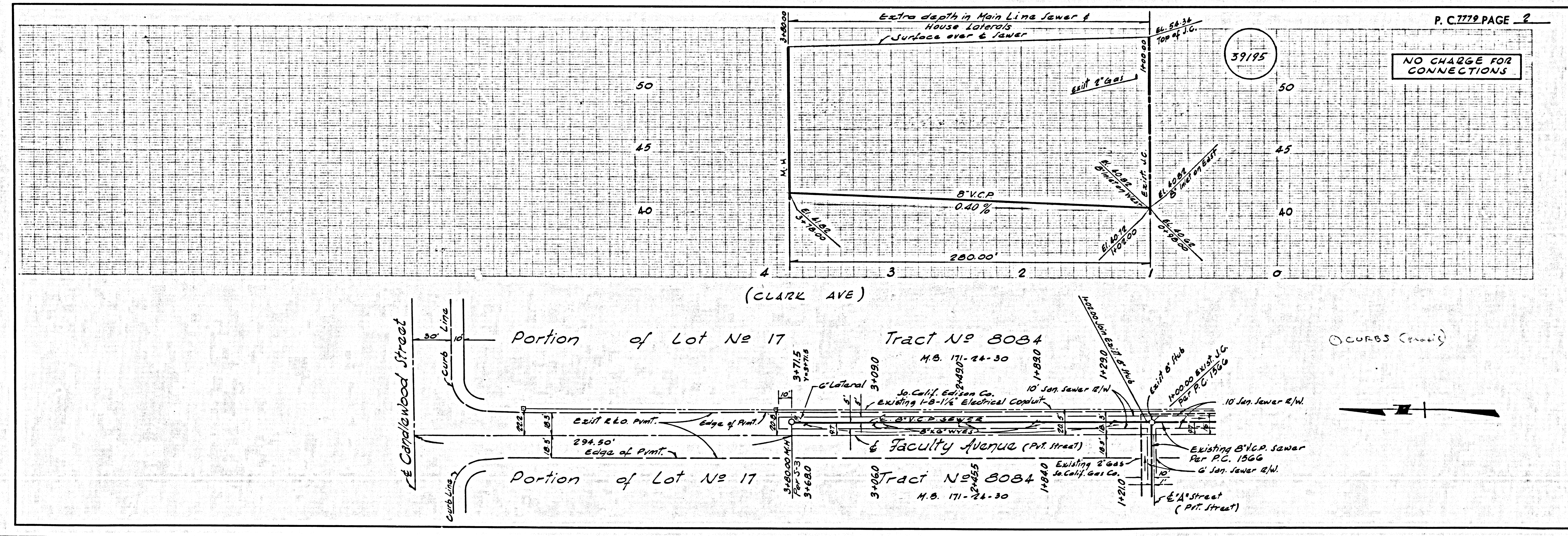
Reviewed: *[Signature]*  
 Industrial Waste Division

**PRIVATE CONTRACT NO. 7779**

W.S. 31  
 1 SHEET, 2 PAGES  
 SCALE: VERT. 1" = 4' HORIZ. 1" = 40'  
 February, 1967  
 39194  
 PREPARED IN THE OFFICES OF  
 Engineering Service Corporation  
 127 W. Washington Blvd.  
 Los Angeles, Calif. 90014  
 J. K. Marshall, Inc.  
 REG. C. E. NO. 13093  
 FOR LEGEND SEE PLAN NO. S1

NOTE:  
 GRADES TO WHICH THIS IMPROVEMENT IS TO BE CONSTRUCTED ARE SHOWN ON PLANS AND PROFILE. GRADE POINTS FOR TOP OF CURBS, CENTER LINE OF STREETS, OR CENTER LINE OF ALLEYS ARE SHOWN BY CIRCLES ON PROFILE. AT ALL POINTS BETWEEN DESIGNATED POINTS THE GRADE SHALL BE ESTABLISHED SO AS TO CONFORM TO A STRAIGHT LINE DRAWN BETWEEN SAID DESIGNATED POINTS. ELEVATIONS ARE IN FEET ABOVE U.S.C. & G.S. MEAN SEA LEVEL.  
 THIS DRAWING AND THE DATA HEREON ARE HEREBY MADE A PART OF THE SPECIFICATIONS.  
 WORK SHALL BE CONSTRUCTED ACCORDING TO THE UNIFORM STANDARD SPECIFICATIONS DATED MAY 22, 1965 AS AMENDED, ON FILE IN THE OFFICE OF THE CITY ENGINEER AND SHALL BE PROTECTED ONLY IN THE PRESENCE OF THE CITY ENGINEER.  
 BEFORE WORK CAN BE STARTED, THE CONTRACTOR MUST OBTAIN A PERMIT TO OCCUPY CITY STREETS FROM THE L.A. COUNTY ROAD DEPT., DISTRICT OFFICE NO. ... AND MAKE DEPOSIT WITH THE CITY OF LAKEWOOD ... TO COVER THE COST OF CONSTRUCTION INSPECTION AND RECORD PLANS.  
 APPROVAL OF THIS PLAN BY THE CITY OF LAKEWOOD DOES NOT CONSTITUTE A REPRESENTATION AS TO THE ACCURACY OF THE LOCATION OF OR THE EXISTENCE OR NON-EXISTENCE OF ANY UNDERGROUND UTILITY PIPES, OR STRUCTURE WITHIN THE LIMITS OF THIS PROJECT. THIS NOTE APPLIES TO ALL PAGES.  
 IF WORK IS TO BE DONE IN A STATE HIGHWAY, A PERMIT MUST BE OBTAINED FROM THE STATE OF CALIFORNIA, DIVISION OF HIGHWAYS, 126 SOUTH SPRING STREET, LOS ANGELES, CALIFORNIA.

**CITY OF LAKEWOOD, CALIFORNIA**  
 JOHN A. LAMBIE, CITY ENGINEER J. D. PARKHURST, CHIEF ENGINEER  
 CO. SAN. DIST. NO. 3  
 APPROVED BY: *[Signature]* APPROVED BY: *[Signature]*  
 SUBMITTED BY: *[Signature]* REG. NO. 10327  
 CHECKED BY: *[Signature]* REG. NO. 15931



NO CHARGE FOR CONNECTIONS

OCURBS (Cont'd)