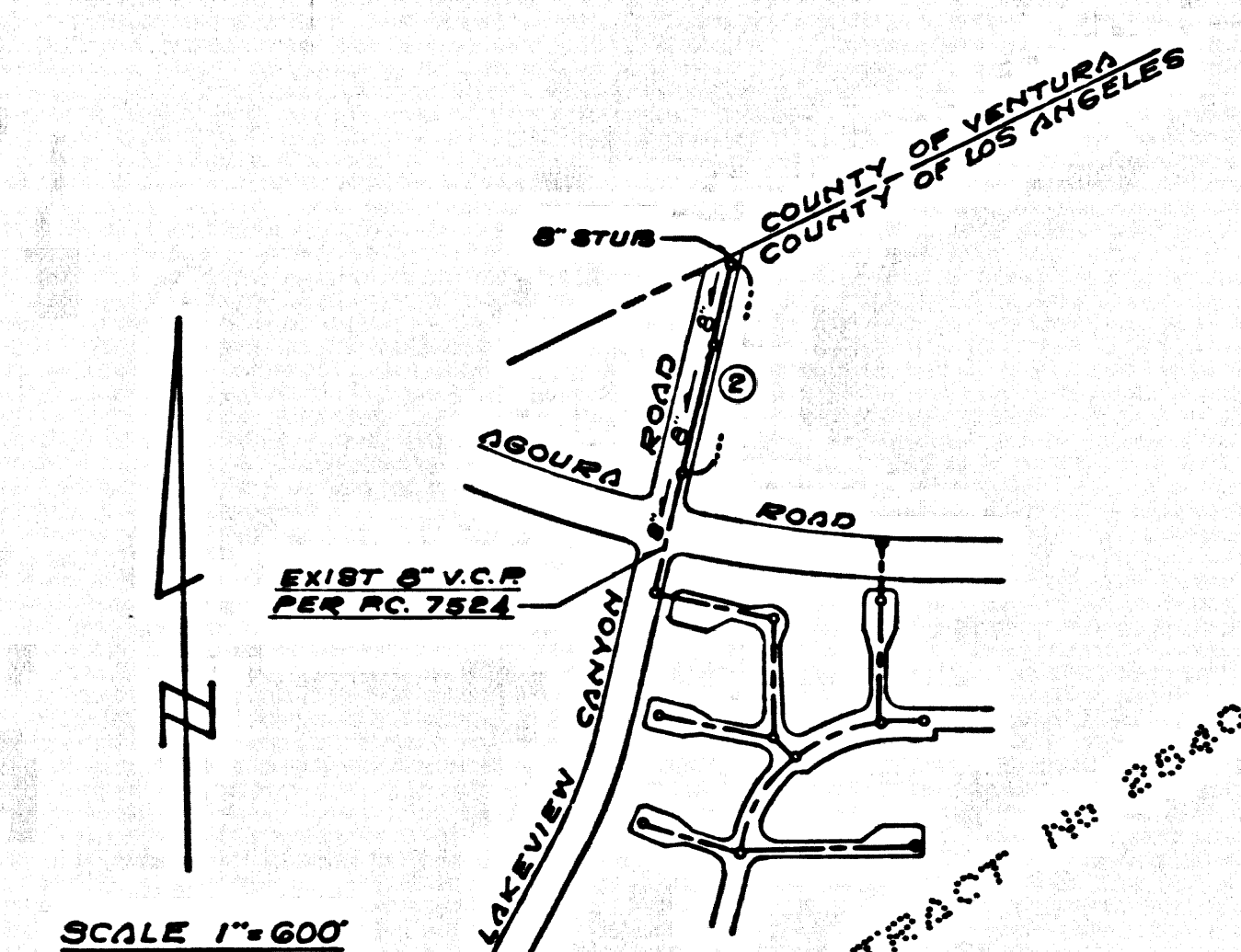


B.M. 59.5641 ELEV. 946.274
 CHIS. 90 ON W. SIDE C/S (DROP INLET)
 ON C/L VENTURA BOULEVARD @
 874.561+85 ± 3 MILES W. CORNELL
 ROAD.
 MALIBU QUAD. 1960



INDEX MAP

NOTE: Numbers in circles indicate page numbers

CALABASAS BLDG. DIST. NO. 9.1

PROFILE, ALIGNMENT AND GRADE OF
 SANITARY SEWERS PAGE 1
 TO BE CONSTRUCTED IN

LAKEVIEW CANYON RD.
 PRIVATE CONTRACT NO. 7780

W.S. 93
 1 SHEET, 2 PAGES
 SCALE: VERT. 1"=4' HORIZ. 1"=40'
 JAN., 1967

39337

PREPARED IN THE OFFICES OF
 MCINTIRE AND QUIROS, INC.
 670 MONTEREY PASS ROAD
 MONTEREY PARK, CALIF.
 TEL. 283-7661, 289-5111

By *George Ingram*
 REG. C. E. NO. 13810
 FOR LEGEND SEE P.L.N. NO. 5-1

THE ACCURACY OF THE LOCATION OF OR THE EXISTENCE OR NON-EXISTENCE OF ANY UTILITY PIPE OR STRUCTURE WITHIN THE LIMITS OF THIS PROJECT DOES NOT CONSTITUTE RESPONSIBILITY BY THE ENGINEER.

TESTING PER LAS VIRGENES MUNICIPAL WATER DISTRICT

- Infiltration and leakage tests:** Method used for testing will be the same as Los Angeles County except the formula to be used is as follows:
 $Q = 250 \text{ gallons/day/inch of diameter/1000 feet}$
 or
 $250 \text{ gallons/day/inch of diameter/mile}$
- Manhole Leakage Tests:** At the discretion of the District's Representative one manhole out of every ten manholes, and a minimum of two will be filled with water and after three hours will be checked for leakage, with no drop in level. For every one manhole not passing tests five more will be tested at the discretion of the District's Representative.
- Air Testing:** Where the difference in elevation between the invert of the upper structure and the invert of the lower structure is more than six feet (6') an air test will be made. The time taken to lose one (1) pound per square inch gauge pressure from three (3) pounds per square inch gauge pressure to two (2) pounds per square inch gauge pressure shall not be less than times shown at the following table:

Main Pipe Diameter	Minimum Time Lose
6" - 14"	1 min
15" - 20"	2 min
21" - 30"	3 min
33" - 36"	4 min

If the time is less than listed in the table above, the contractor shall make such repairs as are necessary to eliminate the excessive leakage.

- NOTES:
- PROVIDE STAKES ON THE PROPERTY LINE OR PROPERTY LINES PRODUCED AT RIGHT ANGLES TO THE SEWER LINE AT THE CENTER LINE OF EACH MANHOLE.
 - NO REPRESENTATIVE OF THE COUNTY ENGINEER WILL SURVEY OR LAY OUT ANY PORTION OF THE WORK.
 - THE PRIVATE ENGINEER SHALL FURNISH THE COUNTY ENGINEER WITH GRADE SHEETS AND STATIONING FOR ALL HOUSE LATERALS AND "T" BRANCHES AND SHALL PROVIDE STAKES FOR THEM AT THEIR PROPER LOCATIONS WITH STATIONING PLAINLY MARKED. ALL HOUSE LATERALS SHALL BE CONSTRUCTED IN A STRAIGHT ALIGNMENT AT RIGHT ANGLES FROM THE MAIN LINE SEWER EXCEPT AS SHOWN ON THE PLANS. HOUSE LATERALS FROM CHIMNEYS SHALL NOT HAVE AN ANGLE OF LESS THAN 45° WITH THE MAIN LINE SEWER. ANY CHANGE IN ALIGNMENT SHALL BE REQUESTED IN WRITING BY THE PRIVATE ENGINEER.
 - THE PRIVATE ENGINEER SHALL FURNISH THE HOUSE LATERAL DEPTH AT THE PROPERTY LINE BELOW THE TOP OF CURB ELEVATION FOR EACH HOUSE LATERAL ON THE GRADE SHEET.
 - NO REVISIONS SHALL BE MADE IN THESE PLANS WITHOUT THE APPROVAL OF THE COUNTY ENGINEER.
 - THE CONTRACTOR SHALL NOTIFY THE CONSTRUCTION DIVISION BY TELEPHONE, MALIBU 9-4787, EXT. 81581, AT LEAST TWENTY-FOUR HOURS BEFORE STARTING ANY WORK UNDER THIS CONTRACT.
 - ALL STRUCTURES SHALL BE EITHER BRICK MANHOLES PER S-3 OR PRECAST CONCRETE MANHOLES PER S-5 OR S-6, EXCEPT AS NOTED.
 - USE STANDARD MANHOLE FRAMES AND COVERS, S-14, EXCEPT AS NOTED.
 - MANHOLE TOPS IN UNIMPROVED RIGHT-OF-WAY TO BE SIX INCHES ABOVE FINISHED GRADE.
 - USE STEEL STRENGTH PIPE. ALL PIPE IS STANDARD UNLESS SPEC'ED AS NOTED.
 - USE MECHANICAL COMPRESSION JOINTS FOR ALL V.C.P. JOINTS PER SPECS. SECS. 34, 48 & 49.
 - IF A POWER POLE IS WITHIN THREE FEET OF THE SEWER, THE SEWER SHALL BE ENCASED, PER S-23, TWO FEET ON EACH SIDE FROM THE POINT OF INTERFERENCE.
 - IF DURING THE COURSE OF CONSTRUCTION IT IS DETERMINED THAT THERE IS LESS THAN FOUR FEET OF COVER OVER THE TOP OF A MAIN LINE OR HOUSE LATERAL V.C.P. SEWER WHICH IS NOT INDICATED ON THE PLANS, THE PIPE SHALL BE ENCASED PER S-23, UNLESS OTHERWISE APPROVED BY THE COUNTY ENGINEER.
 - HOUSE LATERALS TO BE CONSTRUCTED WITH INVERTS AT PROPERTY LINE 4 FEET BELOW CURB GRADE EXCEPT AS NOTED.
 - RESURFACE ALL TRENCHES WITHIN PAVED AREAS TO MEET L.A. COUNTY ROAD DEPT. OR CALIFORNIA STATE HIGHWAY REQUIREMENTS IN ACCORDANCE WITH PERMITS.
 - FOR ALLOWABLE LEAKAGE TEST USE FORMULA NO. 3, SPEC. E, SEC. 54.
 - ALL STATE AND LOCAL TRENCH SAFETY ORDERS WILL BE STRICTLY ENFORCED.
 - CONSTRUCTION IN FILLED AREAS
 (a) AN ACCEPTABLE CERTIFICATION OF COMPACTION TEST RESULTS SHALL BE SUBMITTED TO THE CONSTRUCTION DIVISION. COMPACTION TESTS ARE TO BE MADE IN ACCORDANCE WITH A.S.T.M. STANDARD METHOD OF TEST D-698-47.
 (b) NO CONSTRUCTION IS PERMITTED IN FILLED AREAS WHERE THE RELATIVE DENSITY OF COMPACTION IS LESS THAN 90%.
 (c) IF THE RELATIVE DENSITY OF COMPACTION IS LESS THAN 90%, ALL MAIN LINE AND HOUSE LATERALS SHALL BE ENCASED PER S-23 OR HAVE A SPECIAL AGGREGATE BASE PER S-21, CASE III. SPECIAL MANHOLE BASES PER S-14 ARE REQUIRED.
 (d) IF THE RELATIVE DENSITY OF COMPACTION IS 90% OR GREATER, THE SPECIAL PROVISIONS IN (C) ARE NOT REQUIRED.

ISSUE NO PERMITS UNTIL
 OUTLET IS AVAILABLE

COLLECT CHARGES
 AS INDICATED

L. Castro Dealer

NOTE: GRADES TO WHICH THIS IMPROVEMENT IS TO BE CONSTRUCTED ARE SHOWN ON PLANS AND PROFILES. GREAT POINTS TO TOP OF CURB, CENTER LINE OF STREETS, OR CENTER LINE OF ALLEYS ARE SHOWN BY CIRCLES ON PROFILES. AT ALL POINTS BETWEEN DESIGNATED POINTS THE GRADE SHALL BE ESTABLISHED TO ALL TO CONFORM TO A STRAIGHT LINE BETWEEN SAID DESIGNATED POINTS. ELEVATIONS ARE IN FEET ABOVE U.S.C. & G.S. SEA LEVEL DATUM OF 1929.

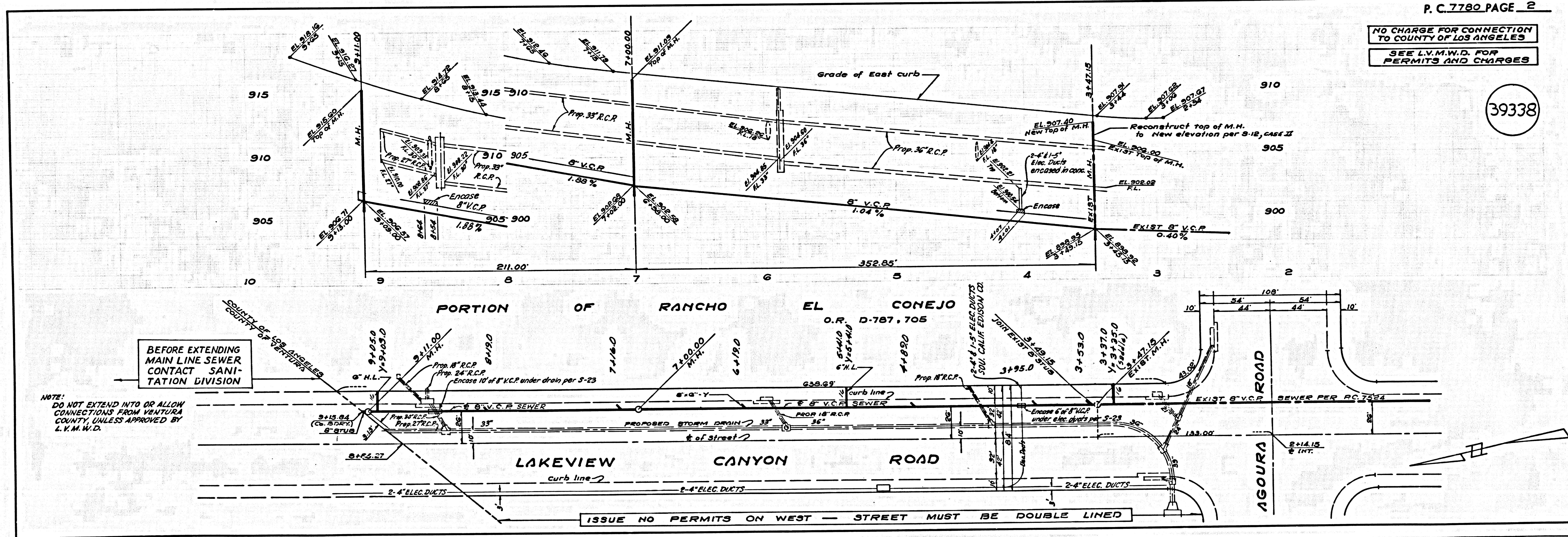
THIS DRAWING AND THE DATA HEREON ARE HEREBY MADE A PART OF THE SPECIFICATIONS FOR THE CONSTRUCTION OF SANITARY SEWERS TO BE CONSTRUCTED ACCORDING TO STANDARD SPECIFICATIONS DATED JULY 23, 1952, AS REVISED ON FILE IN THE OFFICE OF THE COUNTY ENGINEER AND SHALL BE PROSECUTED ONLY IN THE PRESENCE OF THE COUNTY ENGINEER. THE CONTRACTOR MUST OBTAIN A PERMIT TO EXCAVATE IN COUNTY STREETS FROM THE L.A. COUNTY ROAD DEPT., DISTRICT OFFICE NO. 3, AND PAY A FEE TO THE COUNTY ENGINEER, LOCAL 22, COUNTY ENGINEERING BUREAU, 124 WEST SECOND STREET, LOS ANGELES, CALIFORNIA, 90012, REGIONAL OFFICE, SUFFICIENT TO COVER THE COST OF CONSTRUCTION INSPECTION AND RECORD PLANS.

APPROVAL OF THIS PLAN BY THE COUNTY OF LOS ANGELES DOES NOT CONSTITUTE A REPRESENTATION AS TO THE ACCURACY OF THE LOCATION OF OR THE EXISTENCE OR NON-EXISTENCE OF ANY UNDERGROUND UTILITY PIPE, OR STRUCTURE WITHIN THE LIMITS OF THIS PROJECT. THIS NOTE APPLIES TO ALL PAGES.

IF WORK IS TO BE DONE IN A STATE HIGHWAY, A PERMIT MUST BE OBTAINED FROM THE STATE OF CALIFORNIA, DIVISION OF HIGHWAYS, 124 SOUTH SPRING STREET, LOS ANGELES, CALIFORNIA.

COUNTY OF LOS ANGELES, CALIFORNIA
 JOHN A. LAMBIE, COUNTY ENGINEER
 LOS VIRGENES MUNICIPAL WATER DISTRICT
 APPROVED BY: *Richard M. Com* ASSISTANT SANITATION ENGINEER
 APPROVED BY: *Herbert Red* GENERAL MGR. CHIEF ENGINEER
 SUBMITTED BY: *Jack Cooney* REGIONAL ENGINEER
 CHECKED BY: *Edward D. Ueber* REG. C.E. NO. 10263

J.N. 0368.18



P. C. 7780 PAGE 2

NO CHARGE FOR CONNECTION
 TO COUNTY OF LOS ANGELES
 SEE L.V.M.W.D. FOR
 PERMITS AND CHARGES

39338

BEFORE EXTENDING
 MAIN LINE SEWER
 CONTACT SANI-
 TATION DIVISION

NOTE: DO NOT EXTEND INTO OR ALLOW CONNECTIONS FROM VENTURA COUNTY, UNLESS APPROVED BY L.V.M.W.D.

ISSUE NO PERMITS ON WEST - STREET MUST BE DOUBLE LINED