

ALTADENA BLDG. DIST. NO. 3

PROFILE ALIGNMENT AND GRADE OF P.C. 7781
 SANITARY SEWERS PAGE 1
 TO BE CONSTRUCTED IN

TRACT N^o 27434
 PRIVATE CONTRACT NO. 7781

W.S. 88, A-6
 1 SHEETS, 2 PAGES

SCALE: VERT. 1" = 4' HORIZ. 1" = 40' MARCH 1968

PREPARED IN THE OFFICES OF

W. L. BANCHAM

BY: *W. L. Bancham* REG. C. E. NO. 7819

FOR LEGEND SEE PLAN NO. S-1

42813

B.M. BY 4669 FLEV. 1115.473
 L.T. S. CURB
 1.5' S. OF CATCH BASIN 201
 E. OF WINDSOR AVE., 40'
 N. OF FIGUEROA DRIVE.
 PASADENA QUAD. 1965

ALL HOUSE LATERALS SHALL BE CONSTRUCTED IN A STRAIGHT ALIGNMENT AT RIGHT ANGLES FROM THE MAIN LINE SEWER EXCEPT AS SHOWN ON THE PLANS. HOUSE LATERALS FROM CHIMNEYS SHALL NOT HAVE AN ANGLE OF LESS THAN 45° WITH THE MAIN LINE SEWER.

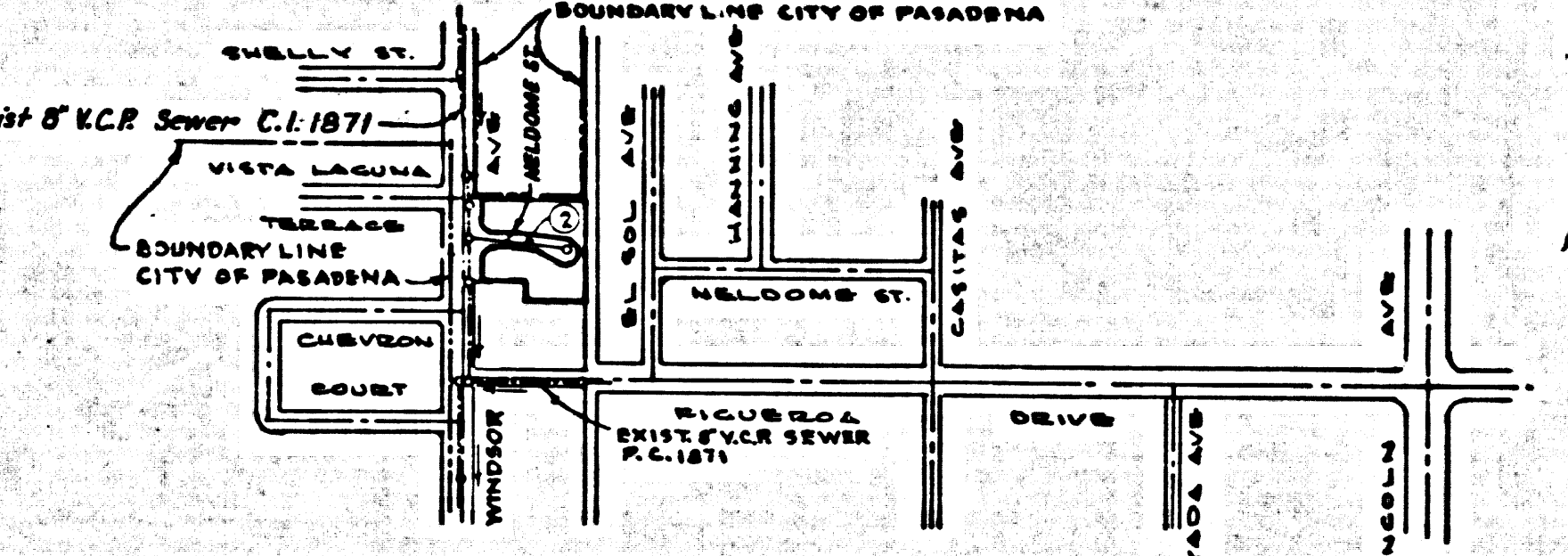
THE FOLLOWING COUNTY ENGINEER STANDARD PLANS APPLY TO THIS PROJECT:

LEGEND	S-1
MINIMUM EXCAVATION SAFETY REQUIREMENTS	S-2
BRICK MANHOLE	S-3
NON-REINFORCED PRECAST CONCRETE MANHOLE	S-4
REINFORCED PRECAST CONCRETE MANHOLE	S-5
MANHOLE FRAME AND COVER	S-6
MANHOLE STEP	S-7
ROOMS FOR SEWER PIPE	S-8
CHAMBER AND ENGAGEMENT	S-9
WYE OR TEE SUPPORT	S-10
ALLOWABLE TRENCH WIDTHS	S-11
LOADING MANHOLE FRAME AND COVER	S-12
NON-REINFORCED PRECAST CONCRETE MANHOLE	S-13

- Sanitation Districts shall be notified prior to the following so that required inspection can be made (Phone 487-1029)
- (1) Commencement of construction of manhole on District trunk sewer.
 - (2) Breaking into existing manhole on District trunk sewer.
 - (3) Core drilling District trunk sewer.
 - (4) Construction of house connections to District trunk sewer.
 - (5) Acceptance of the project.

NO CONNECTIONS FOR THE DISPOSAL OF INDUSTRIAL WASTES SHALL BE MADE TO SEWERS SHOWN ON THESE DRAWINGS WITHOUT WRITTEN PERMISSION FROM THE CHIEF ENGINEER AND GENERAL MANAGER OF THE COUNTY SANITATION DISTRICTS.

- NOTES:
1. PROVIDE STAKES ON THE PROPERTY LINE OR PROPERTY LINES PRODUCED AT RIGHT ANGLES TO THE SEWER LINE AT THE CENTER LINE OF EACH MANHOLE.
 2. NO REPRESENTATIVE OF THE COUNTY ENGINEER WILL SURVEY OR LAY OUT ANY PORTION OF THE WORK.
 3. THE PRIVATE ENGINEER SHALL FURNISH THE COUNTY ENGINEER WITH GRADE SHEETS AND STATIONING FOR ALL HOUSE LATERALS AND "T" OR "Y" BRANCHES AND SHALL PROVIDE STAKE FOR THEM AT THEIR PROPER LOCATIONS WITH STATIONING PLAINLY MARKED. ANY CHANGE IN ALIGNMENT SHALL BE REQUESTED IN WRITING BY THE PRIVATE ENGINEER.
 4. THE PRIVATE ENGINEER SHALL FURNISH THE HOUSE LATERAL DEPTH AT THE PROPERTY LINE BELOW THE TOP OF CURB ELEVATION FOR EACH HOUSE LATERAL ON THE GRADE SHEET.
 5. NO REVISIONS SHALL BE MADE IN THESE PLANS WITHOUT THE APPROVAL OF THE COUNTY ENGINEER.
 6. "T" OR "Y" BRANCHES MAY BE USED FOR CONNECTIONS TO MAINLINE SEWERS EXCEPT AS NOTED.
 7. USE EXTRA STRENGTH PIPE, ALL PIPE IS STANDARD DEPTH EXCEPT AS NOTED.
 8. WITHEDED CLAY PIPE JOINTS SHALL BE TYPE "B"; "C" OR "D" PER STD. SPEC. SEC. 205-5.
 9. RESURFACE ALL TRENCHES WITHIN PAVED AREAS TO MEET L.A. COUNTY ROAD DEPT. OR CALIF. STATE HIGHWAY REQUIREMENTS IN ACCORDANCE WITH PERMITS.
 10. IF A POWER POLE IS WITHIN THREE FEET OF THE SEWER, THE SEWER SHALL BE ENCASED, PER S-15, TWO FEET ON EACH SIDE FROM THE POINT OF INTERFERENCE.
 11. HOUSE LATERALS TO BE CONSTRUCTED WITH INVERTS AT PROPERTY LINE - 6 FEET BELOW CURB GRADE EXCEPT AS NOTED.
 12. ALL STRUCTURES SHALL BE EITHER BRICK MANHOLES PER S-3 OR PRECAST CONCRETE MANHOLES PER S-4 OR S-5, EXCEPT AS NOTED.
 13. SEWERS TO BE TESTED FOR LEAKAGE PER SECTION 304-2, 3, 7 STANDARD SPECIFICATIONS.
 14. MANHOLE TOPS IN UNIMPROVED RIGHTS-OF-WAY TO BE SIX INCHES ABOVE FINISHED GRADE.
 15. THE CONTRACTOR SHALL NOTIFY THE CONSTRUCTION DIVISION BY TELEPHONE, MADISON 9-600, EXT. 8152, AT LEAST TWENTY-FOUR HOURS BEFORE STARTING ANY WORK UNDER THIS CONTRACT.
 16. IF DURING THE COURSE OF CONSTRUCTION IT IS DETERMINED THAT THERE IS LESS THAN FOUR FEET OF COVER OVER THE TOP OF A MAIN LINE OR HOUSE LATERAL K.C.R. SEWER WHICH IS NOT INDICATED ON THE PLANS, THE PIPE SHALL BE ENCASED PER S-15, UNLESS OTHERWISE APPROVED BY THE COUNTY ENGINEER.
 17. ALL STATE AND LOCAL TRENCH SAFETY ORDINANCES WILL BE STRICTLY ENFORCED.
 18. ALL JOINTS BETWEEN CAST IRON PIPE AND WITHEDED CLAY PIPE SHALL BE MADE WITH A RUBBER SLEEVE JOINT, TYPE "C" OR "D" (WITH BUSHING IF NECESSARY) PER STD. SPEC. SEC. 210-2.
 19. SEWER PIPE BENDING SHALL CONFORM TO S-21.



INDEX MAP
 SCALE: 1" = 600'
 TRACT NO. 27434
 P.C. 7781

CONNECTION CHARGES AS INDICATED

NOTE:
 GRADES TO WHICH THIS IMPROVEMENT IS TO BE CONSTRUCTED ARE SHOWN ON PLANS AND PROFILE. GRADE POINTS FOR TOP OF CURB, CENTER LINE OF STREET, OR CENTER LINE OF ALLEY ARE SHOWN BY CIRCLES ON PROFILE. AT ALL POINTS BETWEEN DESIGNATED POINTS THE GRADE SHALL BE ESTABLISHED SO AS TO CONFORM TO A STRAIGHT LINE DRAWN BETWEEN SAID DESIGNATED POINTS.
 ELEVATIONS ARE IN FEET ABOVE U.S.C. & G.S. SEA LEVEL DATUM OF 1929.
 THE DRAWING AND THE DATA HEREON ARE HEREBY MADE A PART OF THE SPECIFICATIONS.
 WORK SHALL BE CONSTRUCTED ACCORDING TO THE STANDARD SPECIFICATIONS FOR PUBLIC WORKS CONSTRUCTION & COUNTY ENGINEER SPECIAL PROVISIONS, DATED 8-1-64, AS REVISED, AND SHALL BE PROSECUTED ONLY IN THE PRESENCE OF THE COUNTY ENGINEER. BEFORE WORK CAN BE STARTED, THE CONTRACTOR MUST OBTAIN A PERMIT TO EXCAVATE IN COUNTY STREETS FROM THE L.A. COUNTY ROAD DEPT., DISTRICT OFFICE NO. 2 - 480 WEST 9TH ST., LOS ANGELES, CALIFORNIA.
 BUILDING FOR REFERENCE IS SUFFICIENT TO COVER THE COST OF CONSTRUCTION INSPECTION AND RECORD PLANS.
 APPROVAL OF THIS PLAN BY THE COUNTY OF LOS ANGELES DOES NOT CONSTITUTE A REPRESENTATION AS TO THE ACCURACY OF THE LOCATION OF OR THE EXISTENCE OR NON-EXISTENCE OF ANY UNDERGROUND UTILITY PIPE, OR STRUCTURE WITHIN THE LIMITS OF THIS PROJECT. THE NOTE APPLIES TO ALL PAGES.
 IF WORK IS TO BE DONE IN A STATE HIGHWAY, A PERMIT MUST BE OBTAINED FROM THE STATE OF CALIFORNIA, DIVISION OF HIGHWAYS, 120 SOUTH BRIDGE STREET, LOS ANGELES, CALIFORNIA.

COUNTY OF LOS ANGELES, CALIFORNIA

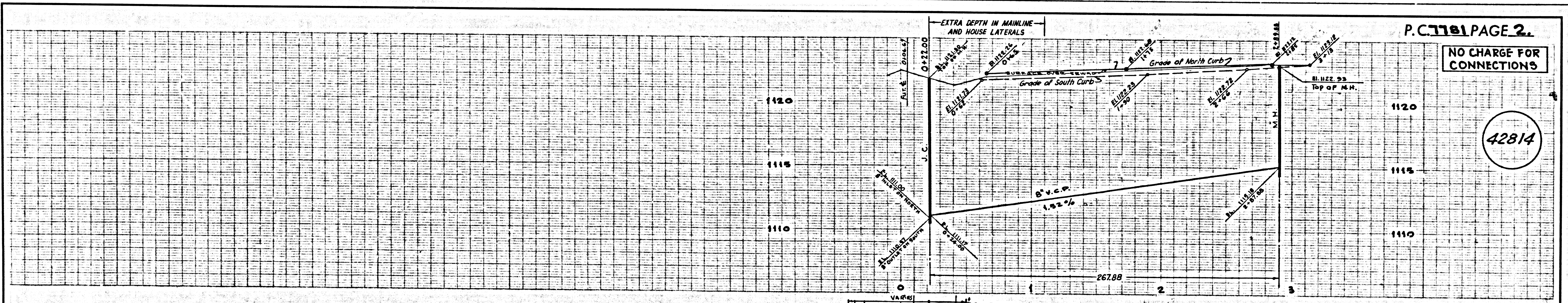
JOHN A. LAMBE, COUNTY ENGINEER 3-26-68 J.D. PARKHURST, CHIEF ENGINEER

APPROVED BY: *John A. Lambe* REGIONAL ENGINEER APPROVED BY: *J.D. Parkhurst* OFFICE ENGINEER

CHECKED BY: *J. J. ...*

STREET OF SAN GABRIEL VALLEY REGIONAL OFFICE, 1908 NORTH RICHMAN AVENUE, TRINIDAD CITY.

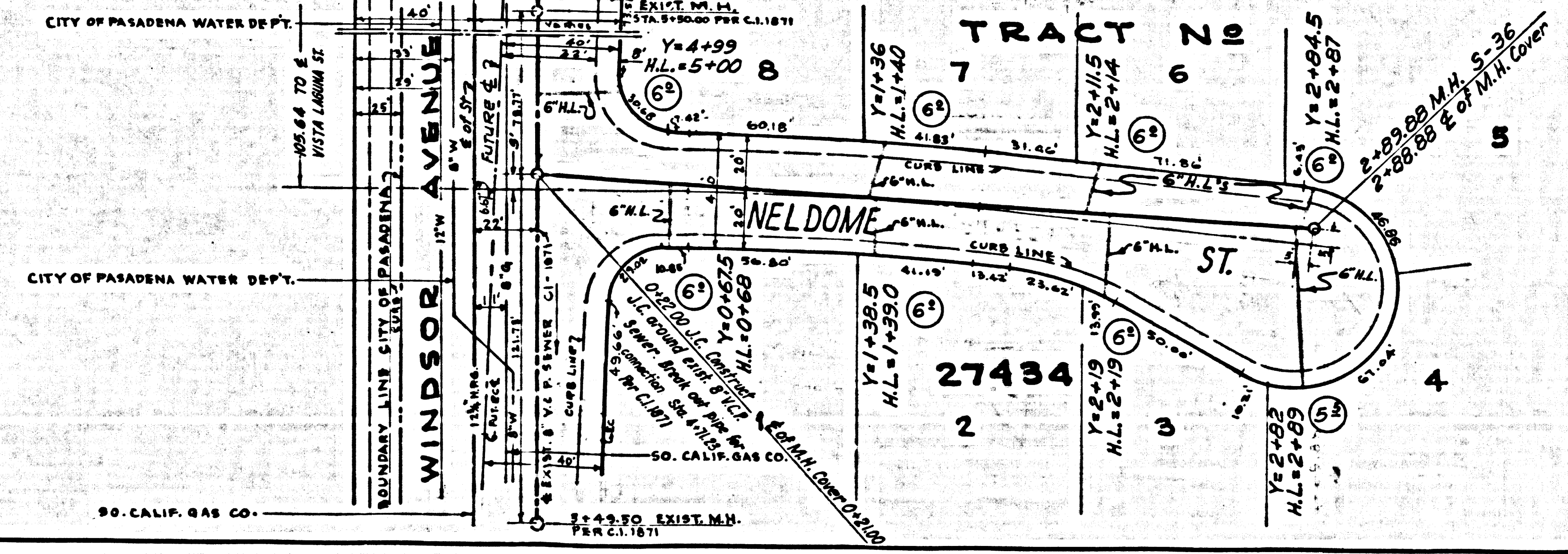
J.N. 0250.02



P.C. 7781 PAGE 2

NO CHARGE FOR CONNECTIONS

42814



80 CALIF. GAS CO.

U.S.G. 1968 PD. CAL. BLUE PRINT SYSTEM NO. 1