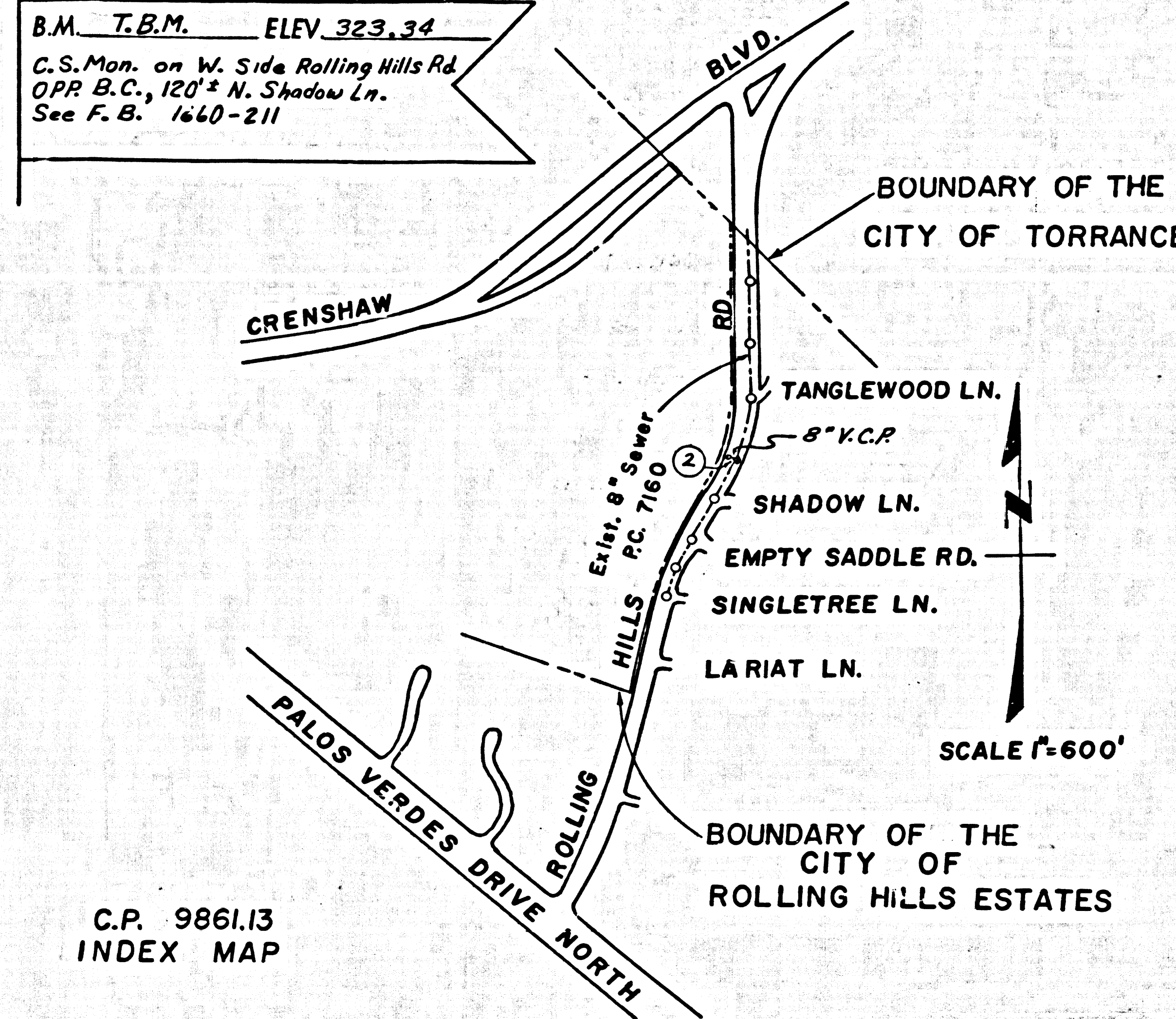


LOMITA BUILDING DISTRICT No.12



USE EXTRA STRENGTH PIPE. ALL PIPE IS STANDARD 60% EXCEPT AS NOTED.
 USE MECHANICAL COMPRESSION JOINTS FOR ALL VITRIFIED CLAY PIPE SEWERS.
 ALL STRUCTURES SHALL BE BRICK MANHOLES, 24" DIA. (MINIMUM).
 USE STANDARD MANHOLE FRAMES AND COVERS, 24" DIA. (MINIMUM).
 USE FORMULA NO. 2, SEC. 674 OF SPECIFICATIONS TO COMPUTE ALLOWABLE LEAKAGE.
 CONDUIT HOLES THROUGH VITRIFIED CLAY PIPE SHALL BE 1/2" DIA. (MINIMUM) AND SHALL BE PROTECTED BY A 1/2" DIA. (MINIMUM) GALVANIZED IRON PIPE.
 PROTECT ALL EXISTING UTILITIES BY DEPTH OF COVER. ALL EXISTING UTILITIES SHALL BE PROTECTED BY A 1/2" DIA. (MINIMUM) GALVANIZED IRON PIPE.
 WORK IN CHARGE OF THIS PROJECT SHALL BE PROTECTED BY A 1/2" DIA. (MINIMUM) GALVANIZED IRON PIPE.
 ALL EXISTING UTILITIES SHALL BE PROTECTED BY A 1/2" DIA. (MINIMUM) GALVANIZED IRON PIPE.
 THE CONTRACTOR SHALL NOTIFY THE CONSTRUCTION DIVISION BY TELEPHONE MADISON 9-5747, EXT. 8181 AT LEAST 24 HOURS BEFORE STARTING ANY WORK UNDER THIS CONTRACT.
 CONSTRUCTION IN STATE HIGHWAYS SHALL CONFORM WITH STATE HIGHWAY PERMIT AND THE CONTRACTOR SHALL PAY ALL COSTS IN CONNECTION THEREWITH.
 ALL STATE AND LOCAL TRENCH SAFETY ORDERS WILL BE RIGIDLY ENFORCED.
 REINFORCED CONCRETE TRENCH WITHIN PAVED AREA WITH PREMIUM ROCE AND OR 6" INCHES IN THICKNESS ON 6" INCHES OF AGGREGATE BASE MATERIALS, EXCEPT AS NOTED BELOW.
 APPROVAL OF THE PLAN FOR THIS PROJECT BY THE COUNTY OF LOS ANGELES DOES NOT CONSTITUTE A REPRESENTATION AS TO THE ACCURACY OF THE LOCATION OR THE EXISTENCE OR NON-EXISTENCE OF ANY UNDERGROUND UTILITY PIPE OR STRUCTURE WITHIN THE LIMITS OF THIS PROJECT.
 NO REVISION SHALL BE MADE TO THESE PLANS WITHOUT THE APPROVAL OF THE COUNTY ENGINEER.
 PRIOR TO BEGINNING CONSTRUCTION, THE CONTRACTOR SHALL OBTAIN AN EXCAVATION PERMIT FROM THE LOS ANGELES COUNTY ROAD DEPARTMENT.

ALL CONCRETE CROSS CUTTERS, CURBS, CUTTERS, PAVEMENT, AND BRICKWORK SHALL BE FURNISHED OR JACKED PER LOS ANGELES COUNTY ROAD DEPARTMENT REQUIREMENTS.
 THE FOLLOWING LATEST REVISED STANDARD PLANS ON FILE IN THE OFFICE OF COUNTY ENGINEER SHALL APPLY IN THE CONSTRUCTION OF THIS PROJECT.

LEGEND	5-1
MINIMUM EXCAVATION SAFETY REQUIREMENTS	5-2
BRICK MANHOLE	5-3
MANHOLE FRAME AND COVER	5-4
MANHOLE STEP	5-7
BEDDING FOR SEWER PIPE	5-8
SPECIAL SUPPORT AND PROTECTION	5-9
CHASING AND ENCASING	5-10
STANDARD WYE SUPPORT	5-11
STOPPER	5-12

NO CHARGE FOR CONNECTIONS

APPROVED:
 CITY OF ROLLING HILLS ESTATES
 James P. Leach
 CITY MANAGER

CAPITAL PROJECT NO. 9861.13
 PROFILE, ALIGNMENT AND GRADE OF
 SANITARY SEWERS TO SERVE
 NORTH COMFORT STATION-SOUTH COAST BOTANIC GARDEN
 1 SHEET, 2 PAGES

39469

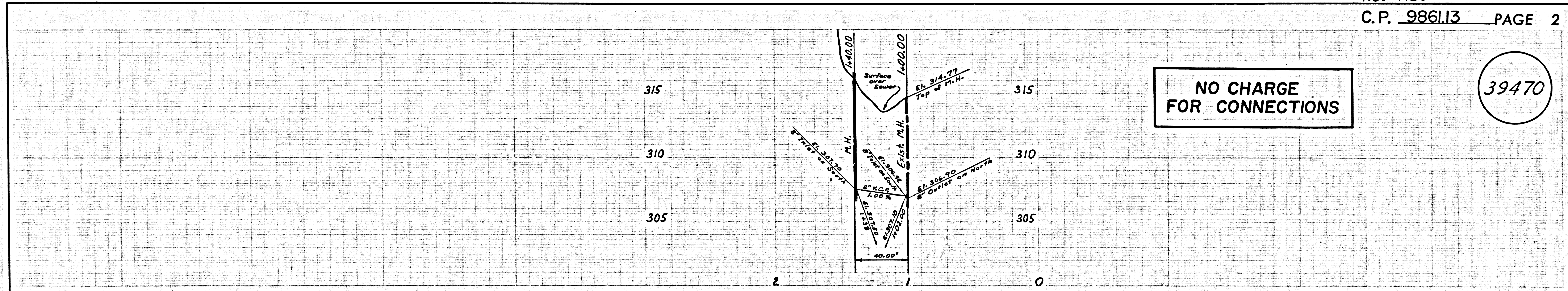
SCALE: HORIZ. 1" = 40'
 VERT. 1" = 4'
 FEBRUARY 1967
 COUNTY OF LOS ANGELES, CALIFORNIA

JOHN A. LAMBIE COUNTY ENGINEER
 APPROVED BY: [Signature] SANITATION ENGINEER
 RECOMMENDED BY: [Signature] ASST. CIVIL ENGINEER
 DESIGNED BY: [Signature] CIVIL ENGINEER

NOTES:
 WORK SHALL BE CONSTRUCTED ACCORDING TO STANDARD SPECIFICATIONS DATED May 25, 1962 ON FILE IN THE OFFICE OF THE COUNTY ENGINEER AND SHALL BE PROSECUTED ONLY IN THE PRESENCE OF THE COUNTY ENGINEER.
 GRADES TO WHICH THIS IMPROVEMENT IS TO BE CONSTRUCTED ARE SHOWN ON PLANS AND PROFILES. GRADE POINTS FOR TOP OF CURB, CENTER LINE OF STREET OR CENTER LINE OF ALLEY ARE SHOWN BY CIRCLES ON PROFILES AT ALL POINTS BETWEEN DESIGNATED POINTS THE GRADE SHALL BE ESTABLISHED SO AS TO CONFORM TO A STRAIGHT LINE DRAWN BETWEEN SAID DESIGNATED POINTS.
 ELEVATIONS ARE IN FEET ABOVE U.S.C. & G.S. SEA LEVEL DATUM OF 1929.
 UNIT PRICES FOR ADDITIONAL WORK WHICH MAY BE REQUIRED BUT WHICH CANNOT BE ASCERTAINED IN ADVANCE, SHALL BE SUBMITTED IN THE PROPOSAL.
 THIS DRAWING AND THE DATA HEREON ARE HEREBY MADE A PART OF THE SPECIFICATIONS.

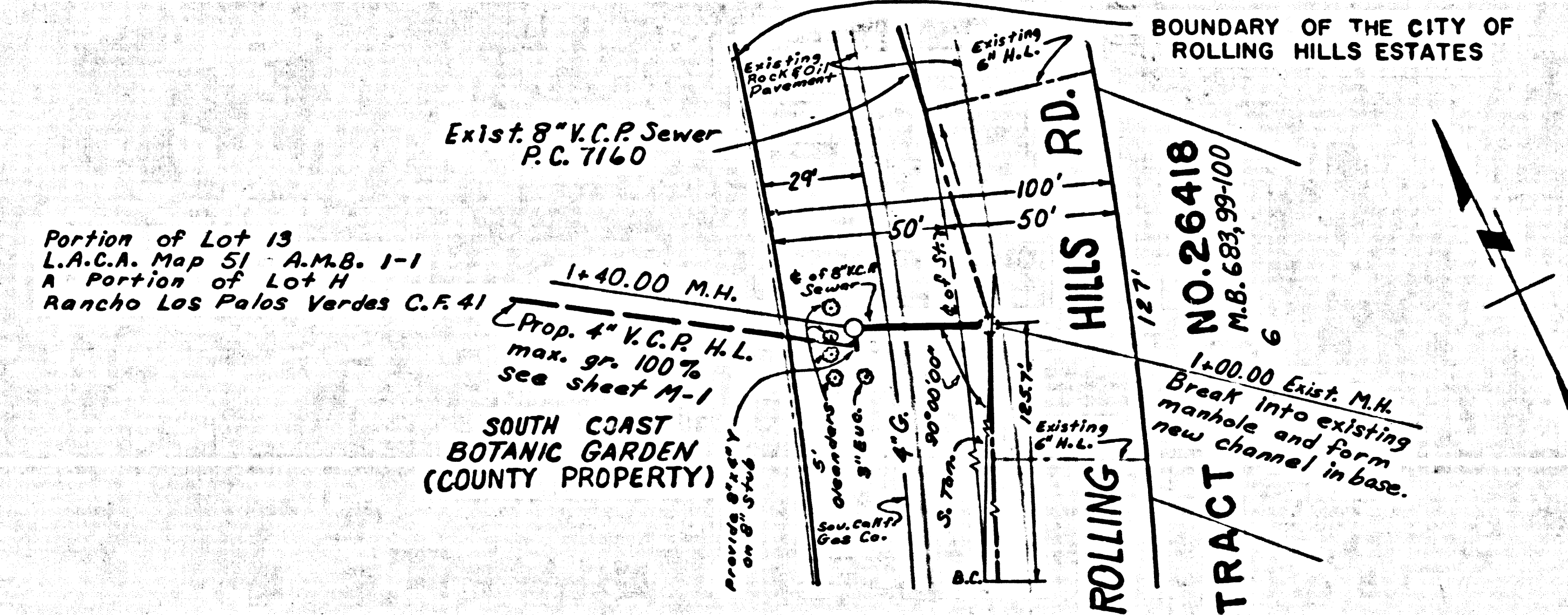
LAYOUT	SIMS	FEB. 1967	UNDERGROUND	R.W. 3/24/67	2-22-67
TRACED	SIMS	FEB. 1967	BENCH MARKS	W. S. 2/24/67	2-24-67
CHECKED	SEVERT	FEB. 1967	MAINTENANCE	C. J. 2/24/67	2-24-67
F.B. 1660			INSPECTOR		
A.B.			RECORD PLANS		

NO CONNECTIONS FOR THE DISPOSAL OF INDUSTRIAL WASTES SHALL BE MADE TO SEWERS SHOWN ON THESE DRAWINGS WITHOUT WRITTEN PERMISSION FROM THE CHIEF ENGINEER AND GENERAL MANAGER OF THE COUNTY SANITATION DISTRICTS.



NO CHARGE FOR CONNECTIONS

39470



Portion of Lot 13
 L.A.C.A. Map 57-A.M.B. 1-1
 A Portion of Lot H
 Rancho Los Palos Verdes C.F. 41

Exist. 8" V.C.P. Sewer
 P.C. 7140

Prop. 4" V.C.P. H.L.
 max. gr. 100%
 see sheet M-1

SOUTH COAST
 BOTANIC GARDEN
 (COUNTY PROPERTY)

BOUNDARY OF THE CITY OF ROLLING HILLS ESTATES

HILLS RD.

ROLLING HILLS TRACT

NO. 26418
 M.B. 685,99-100

1.00.00 Exist. M.H.
 Break into existing
 manhole and form
 new channel in base.