

REVISIONS			
NO.	DATE	DESCRIPTION	BY

PREPARED BY  
**JOHN A. LAMBIE**  
COUNTY ENGINEER  
**P.C. 7788**  
RECOMMENDED BY  
*Richard W. Carr*  
ASST. DIVISION ENGINEER, SANITARIAN DIVISION

1964 STORM DRAIN BOND ISSUE  
LOS ANGELES COUNTY  
FLOOD CONTROL DISTRICT  
S.D. 1206

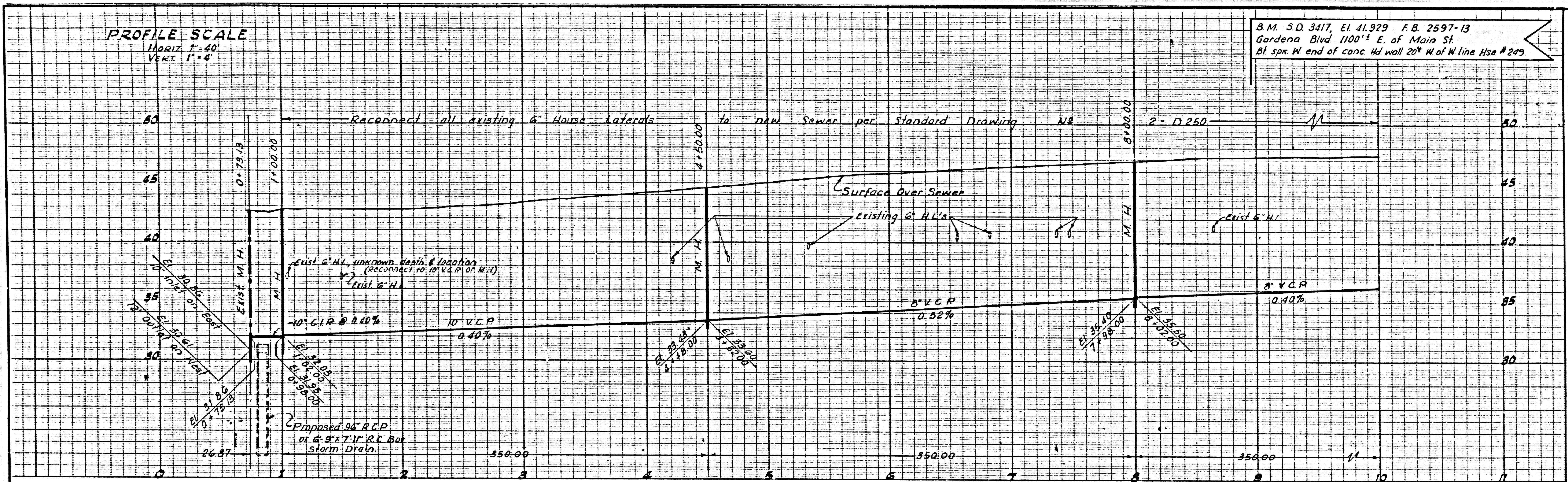
STA. TO STA.  
**PLAN AND PROFILE**  
RECOMMENDED BY: APPROVAL RECOMMENDED BY:  
DIVISION ENGINEER: ASST. CHIEF DEPUTY ENGINEER  
APPROVED BY: CHIEF ENGINEER

SCALE: HORIZ. 1"=40', VERT. 1"=4'  
DATE: JAN. 1967  
DWG. NO. SHEET OF



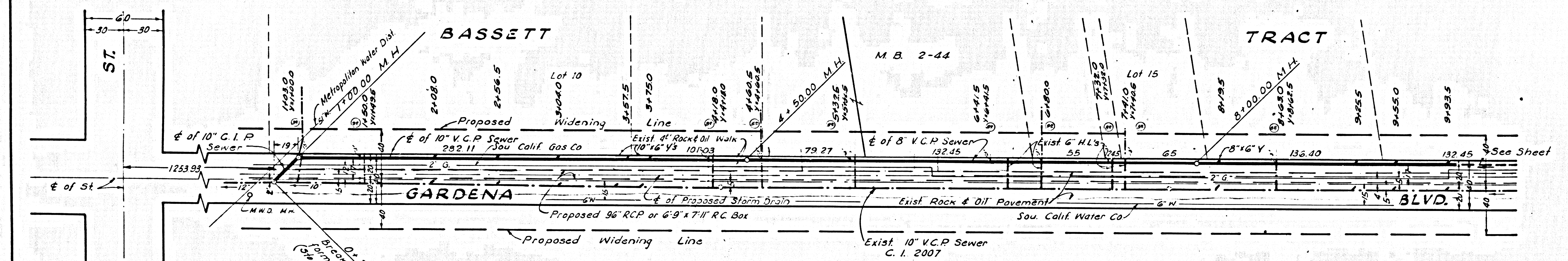
**PROFILE SCALE**  
 Horiz. 1"=40'  
 Vert. 1"=4'

B.M. S.D. 3417, El. 11,929 F.B. 2597-13  
 Gardena Blvd. 1100' E. of Main St.  
 Bl. spk. W. end of conc. Hd wall 20' W of W. line Hse # 279



- GENERAL NOTES**
1. For legend see Standard Plan S-1.
  2. Use extra strength Vitrified Clay Pipe except as noted.
  3. Use mechanical compression joints for all Vitrified Clay Pipe Sewers per Sec. 36, 48, & 49 of Standard Sewer Specification, as revised.
  4. All structures shall be brick sewer structures per plan N-3-3.
  5. Use standard manhole frames and covers per plan N-5-15.
  6. Use formula N-2, Sec. 54 of Specifications to compute allowable leakage.
  7. Resurface trenches within the paved area of street as noted on Storm Drain Plans.
  8. Abandoned portions of house laterals shall be sealed per Sec. 60 of Specs.
  9. Sanitary sewers shall be constructed according to Standard Spec's dated May 25, 1962, as revised, on file in the Office of the County Engineer and shall be prosecuted only in the presence of the County Engineer.
  10. The Contractor shall notify the Construction Division by Tel. Ma 9-4747, Ext. 81551 at least 24 hours before starting any work under this project.
  11. No revision shall be made in these plans without the approval of the County Engineer.
  12. Approval of the sewer plans for this project by the County of Los Angeles does not constitute a representation as to the accuracy of the location of or the existence or non-existence of any underground utility pipe or structure within the limits of this project.
  13. Flow in existing services must be maintained at all times during construction.
  14. Remove and replace existing sidewalk per Section 69 of Standard Sewer Specifications.

40209



REVISIONS			
NO.	DATE	DESCRIPTION	BY

APPROVED  
 JOHN D. PARKHURST  
 CHIEF ENGINEER  
 COUNTY SAN. DIST. NO. 3  
 BY *[Signature]*  
 OFFICE ENGINEER

PREPARED BY  
**JOHN A. LAMBIE**  
 COUNTY ENGINEER  
 P.C. 7783  
 RECOMMENDED BY  
*[Signature]*  
 DIVISION ENGINEER, SANITATION DIVISION  
 DRAWN BY T. HONDA  
 TRACED BY T. HONDA  
 CHECKED BY K. KESER

1964 STORM DRAIN BOND ISSUE  
 LOS ANGELES COUNTY  
 FLOOD CONTROL DISTRICT  
 S.D. 1206, B.1. - 1964

STA. TO STA.  
**PLAN AND PROFILE**

RECOMMENDED BY: *[Signature]* DIVISION ENGINEER, SANITATION DIVISION  
 APPROVAL RECOMMENDED BY: *[Signature]* ASST. CHIEF DEPUTY ENGINEER

APPROVED BY: *[Signature]* CHIEF ENGINEER

SCALE: 4096 1/4" = 40' VERT. 1" = 4'  
 DATE: \_\_\_\_\_ DWG. NO. \_\_\_\_\_ SHEET \_\_\_\_\_ OF \_\_\_\_\_