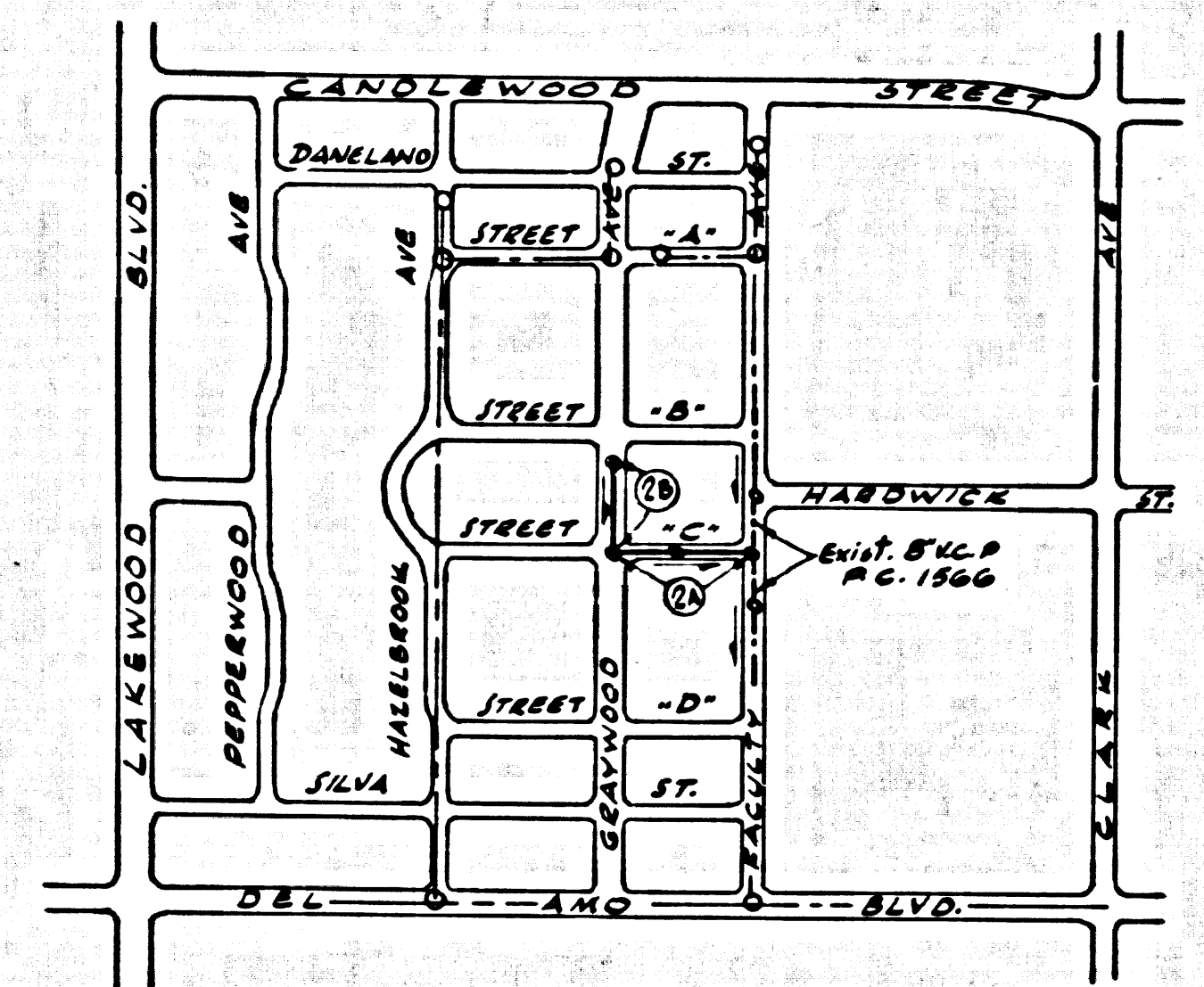


B.M. 54 4902 - ELEV. 47.640
 LOTS 6, 7, 1/2 W/O B.O.C. AT
 S.W. COR. CLARK AVE &
 DEL ANO BLVD. 40' S & 50' S
 W/O E. INT. LAKEWOOD QUAD.
 1955 ADJ.



Index Map
 Scale: 1" = 600'
 P.C. 7791

**PRIVATE ENGINEER'S
 NOTICE TO CONTRACTOR**

THE EXISTENCE AND LOCATION OF ANY UNDERGROUND UTILITY PIPES OR STRUCTURES SHOWN ON THESE PLANS ARE OBTAINED BY A SEARCH OF THE AVAILABLE RECORDS. TO THE BEST OF OUR KNOWLEDGE THERE ARE NO EXISTING UTILITIES EXCEPT AS SHOWN ON THIS MAP. THE CONTRACTOR IS REQUIRED TO TAKE PRELIMINARY MEASURES TO PROTECT THE UTILITY LINES SHOWN AND ANY OTHER LINES NOT OF RECORD OR NOT SHOWN ON THIS DRAWING.

LAKEWOOD BLDG. DIST. NO. 401

- NOTE:
1. HOUSE STAKES ON THE PROPERTY LINE OR PROPERTY LINES PRODUCED AT RIGHT ANGLES TO THE SEWER LINE AT THE CENTER LINE OF EACH MANHOLE.
 2. NO REPRESENTATIVE OF THE CITY ENGINEER WILL SURVEY OR LAY OUT ANY PORTION OF THE WORK.
 3. THE PRIVATE ENGINEER SHALL FURNISH THE CITY ENGINEER WITH GRADE SHEETS AND STATIONING FOR ALL HOUSE LATERALS AND T BRANCHES AND SHALL PROVIDE STAKES FOR THEM AT THEIR PROPER LOCATIONS WITH STATIONING PLAINLY MARKED. ALL HOUSE LATERALS SHALL BE CONSTRUCTED IN A STRAIGHT ALIGNMENT AT RIGHT ANGLES FROM THE MAIN LINE SEWER EXCEPT AS SHOWN ON THE PLANS. HOUSE-BRANCHES FROM BRANCHES SHALL HAVE AN ANGLE OF LESS THAN 45° WITH THE MAIN LINE SEWER. ANY CHANGE IN ALIGNMENT SHALL BE REQUESTED BY WRITING BY THE PRIVATE ENGINEER.
 4. THE PRIVATE ENGINEER SHALL FURNISH THE HOUSE LATERAL DEPTH AS THE PROPERTY LINE BELOW THE TOP OF CURB SURVEY FOR EACH HOUSE LATERAL ON THE GRADE SHEET.
 5. NO REVISIONS SHALL BE MADE IN THESE PLANS WITHOUT THE APPROVAL OF THE CITY ENGINEER.
 6. THE CONTRACTOR SHALL NOTIFY THE CONSTRUCTION DIVISION BY TELEPHONE, MADISON 9-4747, EXT. 81551, AT LEAST TWENTY-FOUR HOURS BEFORE STARTING ANY WORK UNDER THIS CONTRACT.
 7. MANHOLES SHALL BE BRICK SEWER STRUCTURES PER S. 2.
 8. USE STANDARD MANHOLE FRAMES AND COVERS, S-18.
 9. MANHOLE TOPS TO BE AT FINISH GRADE.
 10. USE EXTRA STRENGTH PIPE, ALL PIPE IS STANDARD DIPS EXCEPT AS NOTED.
 11. USE 1/2" MECHANICAL COMPRESSION JOINTS FOR ALL V.C.P. JOINTS PER SPEC., SECS. 36 & 42 & 49.
 12. IF A POWER POLE IS WITHIN THREE FEET OF THE SEWER, THE SEWER SHALL BE ENCASED, PER S-25, CASE II, TWO FEET ON EACH SIDE FROM THE POINT OF INTERFERENCE.
 13. IF DURING THE COURSE OF CONSTRUCTION IT IS DETERMINED THAT THERE IS LESS THAN FOUR FEET OF COVER OVER THE TOP OF A MAIN LINE OR HOUSE LATERAL V.C.P. SEWER WHICH IS NOT INDICATED ON THE PLANS, THE PIPE SHALL BE ENCASED PER S-25, CASE II, UNLESS OTHERWISE PROVIDED BY THE CITY ENGINEER.
 14. HOUSE LATERALS TO BE CONSTRUCTED WITH 1/4" RISE PER FOOT TO THE SEWER 6" IN LINE.
 15. RESURFACE ALL TRENCHES WITHIN PAVED AREAS TO MEET L.A. COUNTY ROAD DEPT. OR CALIFORNIA STATE HIGHWAY REQUIREMENTS IN ACCORDANCE WITH PERMITS.
 16. FOR ALLOWABLE CLEARANCE TEST USE FORMULA MS^2 , SPEC. 52, SEC. 52.
 17. ALL STATE AND LOCAL TRENCH SAFETY DEVICES WILL BE STRICTLY ENFORCED.

**COLLECT CHARGES
 AS INDICATED**

Sum of 2.00 5-26-67

NO CONNECTIONS FOR THE DISPOSAL OF INDUSTRIAL WASTES SHALL BE MADE TO SEWERS SHOWN ON THESE DRAWINGS WITHOUT WRITTEN PERMISSION FROM THE CITY ENGINEER AND GENERAL MANAGER OF THE COUNTY SANITATION DISTRICTS.

PROFILE ALIGNMENT AND GRADE OF
SANITARY SEWERS
 TO BE CONSTRUCTED IN

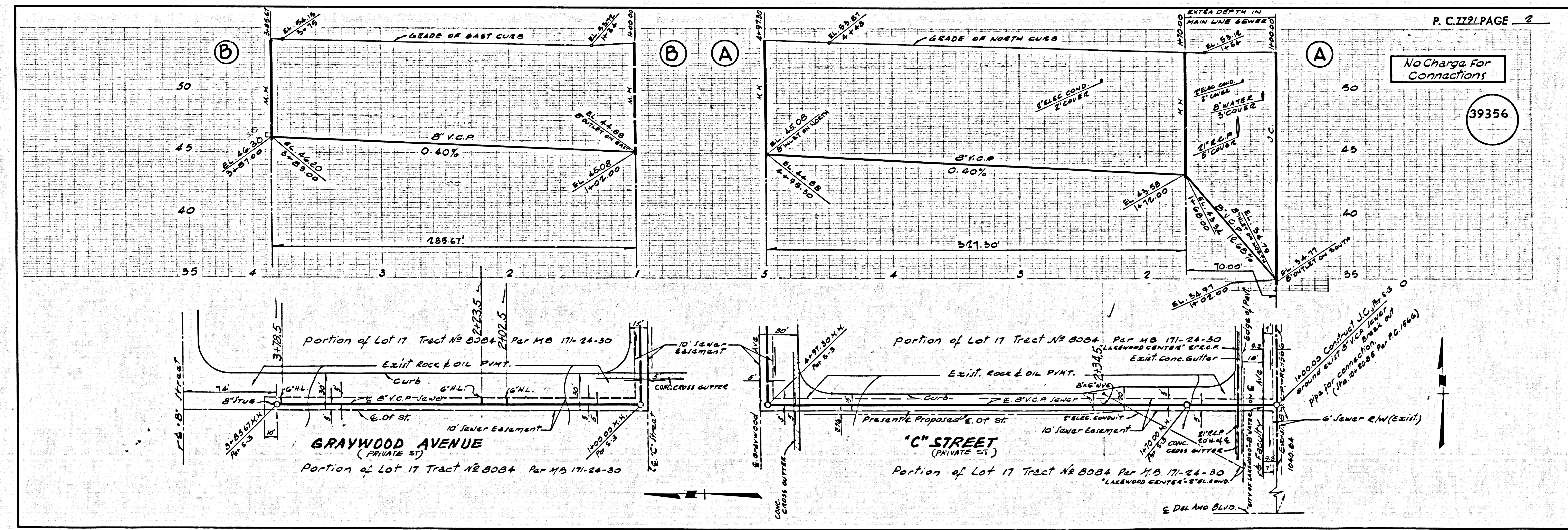
P.C. 7791
 PAGE 1

21/2, W/O FACULTY AVE
 PRIVATE CONTRACT NO. 7791
 W.S. 31

1 SHEET, 2 PAGES
 SCALE: VERT. 1" = 4'
 HORIZ. 1" = 40'
 PREPARED IN THE OFFICES OF
Engineering Service Corporation
 1127 W. Washington Blvd.
 Los Angeles, Calif. 90018
 BY: *J. K. Merrill*
 REG. C.E. NO. 13095
 FOR LEGEND SEE PLAN NO. S-1

NOTE:
 GRADES TO WHICH THIS IMPROVEMENT IS TO BE CONSTRUCTED ARE SHOWN ON PLANS AND PROFILES. GRADE POINTS FOR TOP OF CURBS, CENTER LINE OF STREETS, OR CENTER LINE OF ALLEYS ARE SHOWN BY CIRCLES ON PROFILES. AT ALL POINTS BETWEEN DESIGNATED POINTS THE GRADE SHALL BE ESTABLISHED SO AS TO CONFORM TO A STRAIGHT LINE DRAWN BETWEEN SAID DESIGNATED POINTS. REVISIONS ARE IN PENCIL ABOVE U.S.C. & G.S. SEA LEVEL DATUM OF 1929.
 THIS DRAWING AND THE DATA HEREON ARE HEREBY MADE A PART OF THE SPECIFICATIONS.
 BEFORE WORK CAN BE STARTED, THE CONTRACTOR SHALL BE RESPONSIBLE TO EXAMINE ALL CITY STREETS SHOWING THE COUNTY ROAD DIST. DISTRICT OFFICE NO. 10, AND MAKE A DEPOSIT WITH THE CITY OF LAKEWOOD COUNTY ROAD DIST. DISTRICT OFFICE NO. 10, A CHECK FOR THE COST OF CONSTRUCTION INSPECTION AND RECORD PLANS.
 APPROVAL OF THIS PLAN BY THE CITY OF LAKEWOOD DOES NOT CONSTITUTE A REPRESENTATION AS TO THE ACCURACY OF THE LOCATION OF OR THE EXISTENCE OR NON-EXISTENCE OF ANY UNDERGROUND UTILITY PIPE, OR STRUCTURE WITHIN THE LIMITS OF THIS PROJECT. THIS NOTE APPLIES TO ALL PAGES.
 IF WORK IS TO BE DONE IN A STATE HIGHWAY, A PERMIT MUST BE OBTAINED FROM THE STATE OF CALIFORNIA, DIVISION OF HIGHWAYS, 120 SOUTH SPRING STREET, LOS ANGELES, CALIFORNIA.

CITY OF LAKEWOOD, CALIFORNIA
 JOHN A. LAMBIE, CITY ENGINEER
 APPROVED BY: *Richard M. Coon*
 ASSISTANT SANITATION ENGINEER
 SUBMITTED BY: *Charles R. Hildebrand*
 CHECKED BY: *Orville E. McCallon*
 REG. C.E. NO. 15731



No Charge For
 Connections

P.C. 7791 PAGE 2

39356