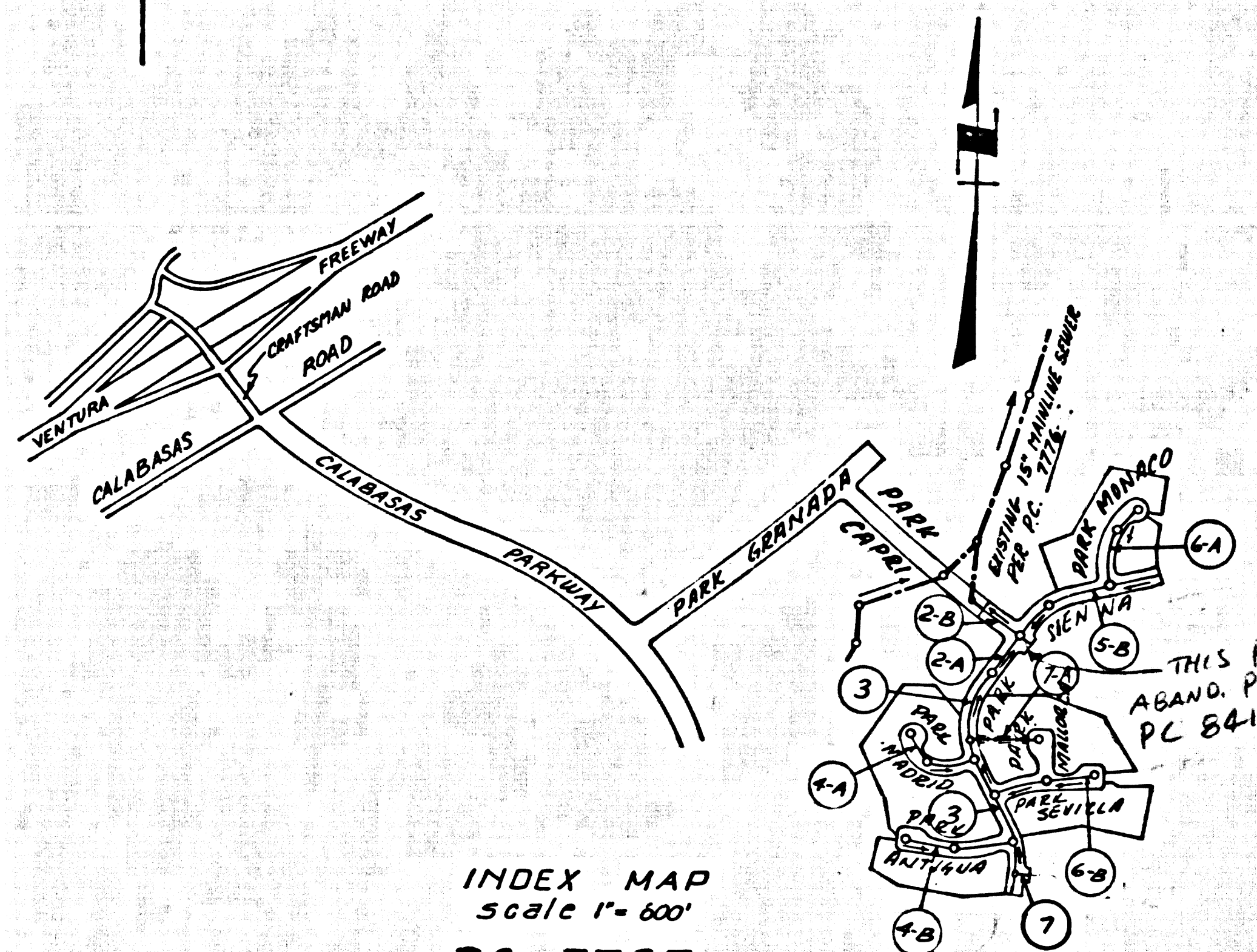


B.M. 4929 ELEV. 920.634
R.D.M. TAG CONC. CA. 5' SE CORNER
HOUSE ENTRANCE TO MIDDEN HILLS
27' NORTH & LONG VALLEY RD. (PRIVATE
ROAD)
MALIBU QUAD. 1960



INDEX MAP
Scale 1" = 600'
PC. 7797

- TESTING PER LAS VIRGENES MUNICIPAL WATER DISTRICT
1. INDICATION AND LEAKAGE TEST METHOD USED FOR TESTING WILL BE THE SAME AS THE ANGELES COUNTY EXCEPT THE FORMULA TO BE USED IS AS FOLLOWS:
0.33 GALLONS/MINUTE/INCH OF DIAMETER/1000 FEET OR
2.50 GALLONS/DAY/INCH OF DIAMETER/MILE.
 2. MANHOLE LEAKAGE AT THE DISCRETION OF THE DISTRICT'S REPRESENTATIVE ONE MANHOLE OUT OF TEN MANHOLES AND A MINIMUM OF TWO WILL BE FILLED WITH WATER AND AFTER THREE HOURS WILL BE CHECKED FOR LEAKAGE WITH NADEOP IN LEVEL. FOR EVERY MANHOLE NOT PASSING TESTS THIS HOLE WILL BE TESTED AT THE DISCRETION OF THE DISTRICT'S REPRESENTATIVE.
 3. AIR TESTING, UNLESS THE DIFFERENCE IN ELEVATION BETWEEN THE INVERT OF THE UPPER STRUCTURE AND THE INVERT OF THE LOWER STRUCTURE IS MORE THAN SIX FEET (6') AN AIR TEST WILL BE MADE THE TIME TAKEN TO LOSE ONE (1) POUND PER SQUARE INCH GAUGE PRESSURE FROM THREE (3) POUNDS PER SQUARE INCH GAUGE PRESSURE TO TWO (2) POUNDS PER SQUARE INCH GAUGE PRESSURE SHALL NOT BE LESS THAN TIMES GIVEN ON THE FOLLOWING TABLE

MAIN PIPE DIAMETER	MINIMUM TIME LOSE
6"	1 MINUTE
8"	2 MINUTES
10"	3 MINUTES
12"	4 MINUTES

IF THE TIME IS LESS THAN LISTED IN THE TABLE ABOVE THE CONTRACTOR SHALL MAKE SUCH REPAIRS AS ARE NECESSARY TO ELIMINATE EXCESSIVE LEAKAGE. THE CONTRACTOR SHALL NOTIFY THE L.V.M.W.D. 48 HRS. BEFORE TO COMMENCING WORK. TELEPHONE 213-889-0110.

REVISION: DATE: 1-21-67

1-1	RAISE GRADE FROM STA. 0132 TO 0149.96
2-1	" " " " " " " " " "
3	STA. 5135.36 TO 5171.10
4-1	RAISE GRADE FROM STA. 0149.96 TO 0149.96
4-2	" " " " " " " " " "
4-3	" " " " " " " " " "
4-4	" " " " " " " " " "
5-1	1010.552 TO 1010.552
5-2	RAISE GRADE FROM STA. 0148 TO 0128.81
6-1	" " " " " " " " " "
6-2	" " " " " " " " " "
7-1	ADDED STA. 1100 TO 1193.66
7-2	RAISE GRADE FROM STA. 1100 TO 1182.04

APPROVED: [Signature]

REVISION: DATE: 10-16-67

4-A	LOWER GRADE FROM STA. 0108 TO STA. 3154.59
-----	--

APPROVED: [Signature]

REVISION: DATE: 2-13-70

Page 6A	Revised Legal
---------	---------------

APPROVED: [Signature]

~~ISSUE NO HOUSE CONNECTION PERMITS~~
~~UNTIL MAIN LINES AVAILABLE~~
~~ISSUE NO HOUSE CONNECTION PERMITS UNTIL MAIN LINES AVAILABLE~~

CALABASAS BLDG. DIST. NO. 91

- NOTE:
1. PROVIDE STAKES ON THE PROPERTY LINE OR PROPERTY LINES PRODUCED AT RIGHT ANGLES TO THE SEWER LINE AT THE CENTER LINE OF EACH MANHOLE.
 2. NO REPRESENTATIVE OF THE COUNTY ENGINEER WILL SURVEY OR LAY OUT ANY PORTION OF THE WORK.
 3. THE PRIVATE ENGINEER SHALL FURNISH THE COUNTY ENGINEER WITH GRADE SHEETS AND STATIONING FOR ALL HOUSE LATERALS AND TRENCH BRANCHES AND SHALL PROVIDE STAKES FOR THEM AT THEIR PROPER LOCATIONS WITH STATIONING PLAINLY MARKED. ALL HOUSE LATERALS SHALL BE CONSTRUCTED IN A STRAIGHT ALIGNMENT AT RIGHT ANGLES FROM THE MAIN LINE SEWER EXCEPT AS SHOWN ON THE MAIN HOUSE LATERAL FROM CHIMNEYS SHALL NOT HAVE AN ANGLE OF LESS THAN 45° WITH THE MAIN LINE SEWER. ANY CHANGE IN ALIGNMENT SHALL BE INDICATED BY WRITING BY THE PRIVATE ENGINEER.
 4. THE PRIVATE ENGINEER SHALL FURNISH THE HOUSE LATERAL DEPTH AT THE PROPERTY LINE BELOW THE TOP OF CURB ELEVATION FOR EACH HOUSE LATERAL ON THE GRADE SHEET.
 5. NO REVISIONS SHALL BE MADE IN THESE PLANS WITHOUT THE APPROVAL OF THE COUNTY ENGINEER.
 6. THE CONTRACTOR SHALL NOTIFY THE CONSTRUCTION DIVISION BY TELEPHONE, MADISON 9-487, EXT. 8158, AT LEAST TWENTY-FOUR HOURS BEFORE STARTING ANY WORK UNDER THIS CONTRACT.
 7. ALL STRUCTURES SHALL BE EITHER BRICK MANHOLES PER 3-3 OR PRECAST MANHOLES PER 3-3 PER S-8, EXCEPT AS NOTED.
 8. USE STANDARD MANHOLE FRAMES AND COVERS, S-16, EXCEPT AS NOTED.
 9. MANHOLE TOPS IN UNIMPROVED RIGHTS-OF-WAY TO BE SIX INCHES ABOVE FINISHED GRADE.
 10. USE EXTRA STRENGTH PIPE. ALL PIPE IS STANDARD DEPTH EXCEPT AS NOTED.
 11. USE MECHANICAL COMPRESSION JOINTS FOR ALL V.C.P. JOINTS PER SPC'S, SECC 16, 48 & 49.
 12. IF A POWER POLE IS WITHIN THREE FEET OF THE SEWER, THE SEWER SHALL BE ENCASED, PER S-23, TWO FEET ON EACH SIDE FROM THE POINT OF INTERFERENCE.
 13. IF DURING THE COURSE OF CONSTRUCTION IT IS DETERMINED THAT THERE IS LESS THAN FOUR FEET OF COVER OVER THE TOP OF A MAIN LINE OR HOUSE LATERAL V.C.P. SEWER WHICH IS NOT INDICATED ON THE PLANS, THE PIPE SHALL BE ENCASED PER S-23, UNLESS OTHERWISE APPROVED BY THE COUNTY ENGINEER.
 14. HOUSE LATERALS TO BE CONSTRUCTED WITH INVERTS AT PROPERTY LINE 6 FEET BELOW CURB GRADE EXCEPT AS NOTED.
 15. RESURFACE ALL TRENCHES WITHIN PAVED AREAS TO MEET L.A. COUNTY ROAD SPEC. OR CALIFORNIA STATE HIGHWAY REQUIREMENTS IN ACCORDANCE WITH PERMITS.
 16. FOR ALLOWABLE LEAKAGE TEST USE FORMULA NO. 3, SPC'S, SEC. 54.
 17. ALL STATE AND LOCAL TRENCH SAFETY ORDERS WILL BE STRICTLY ENFORCED.
 18. 7" or 12" STEELING PERMITS ARE LESS FOR CONNECTION TO MAIN LINE SEWERS, EXCEPT AS NOTED.

COLLECT CHARGES AS INDICATED

PROFILE, ALIGNMENT AND GRADE OF
SANITARY SEWERS PAGE 1

TRACT NO 28055
PRIVATE CONTRACT NO. 7797

W.S. 60
4 SHEETS, 7 PAGES
SCALE: VERT. 1" = 4'
HORIZ. 1" = 40'
DECEMBER, 1966

39589

PREPARED IN THE OFFICES OF
BECHTEL CORPORATION
23600 CALABASAS ROAD, CALABASAS - CALIFORNIA

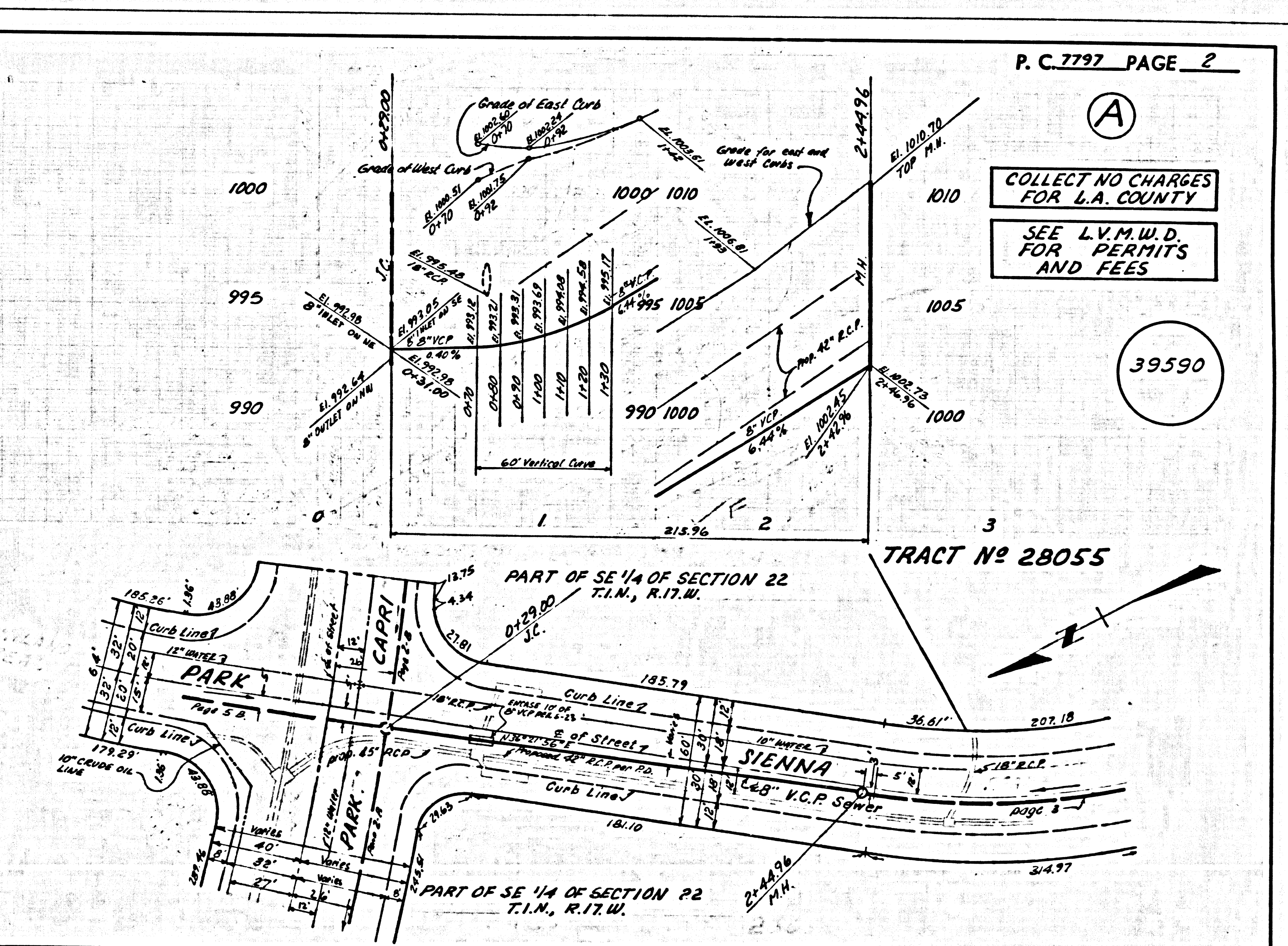
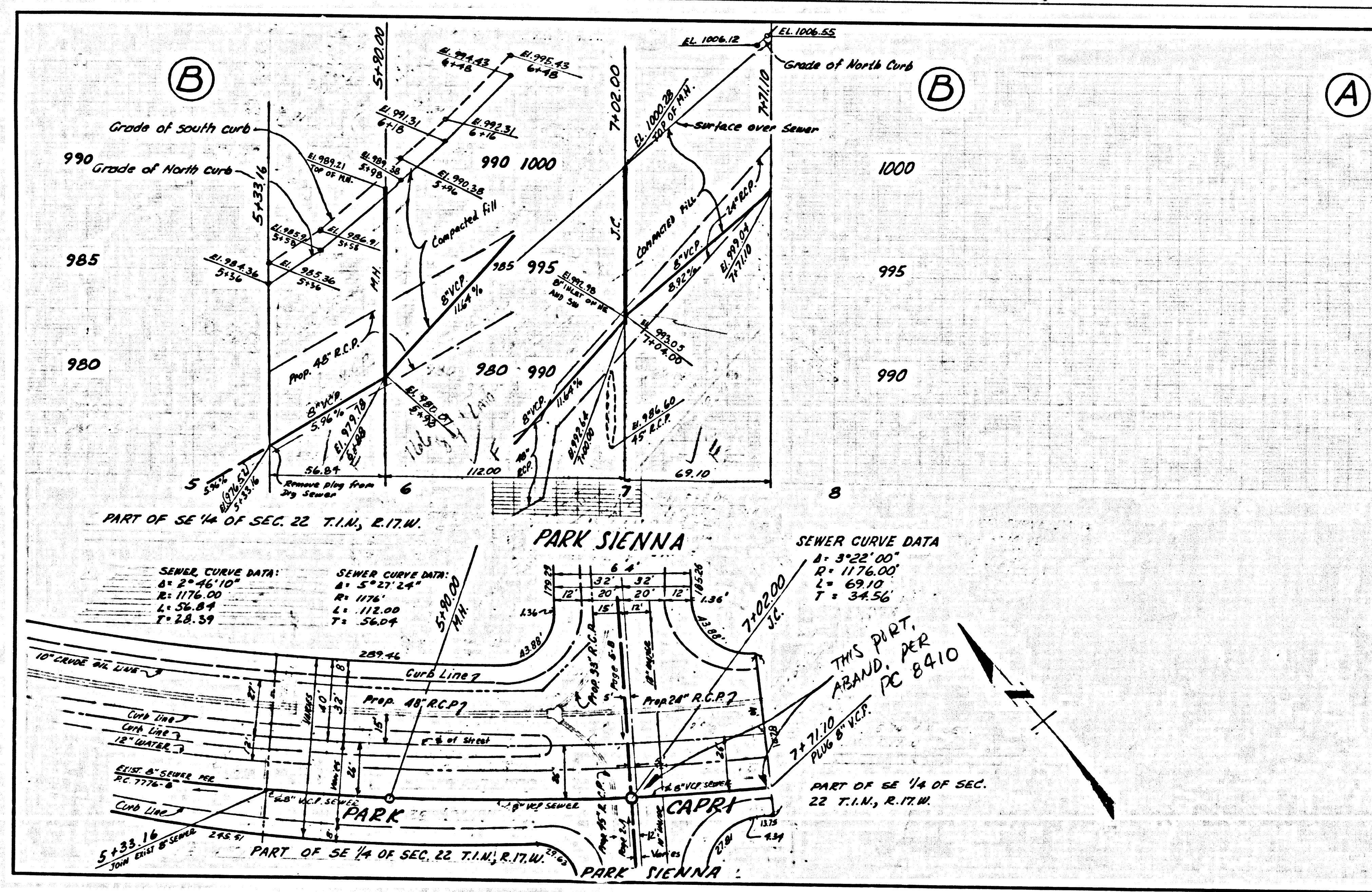
BY: [Signature]
REG. C.E. NO. 14523

FOR LEGEND SEE PLAN NO. S-1

NOTE:
GRADES TO WHICH THIS IMPROVEMENT IS TO BE CONSTRUCTED ARE SHOWN ON PLANS AND PROFILES. GRADE POINTS FOR TOP OF CURBS, CENTER LINE OF STREETS, OR CENTER LINE OF ALLEYS ARE SHOWN BY CIRCLES IN PROFILES. AT ALL POINTS BETWEEN DESIGNATED POINTS THE GRADE SHALL BE ESTABLISHED SO AS TO CONFORM TO A STRAIGHT LINE DRAWN BETWEEN SAID DESIGNATED POINTS. ELEVATIONS ARE IN FEET ABOVE U.S.C. & G.S. SEA LEVEL DATUM OF 1929.
THIS DRAWING AND THE DATA HEREON ARE HEREBY MADE A PART OF THE SPECIFICATIONS.
WORK SHALL BE CONSTRUCTED ACCORDING TO STANDARD SPECIFICATIONS DATED 1-25-66 AS REVISED ON FILE IN THE OFFICE OF THE COUNTY ENGINEER AND SHALL BE PROSECUTED ONLY IN THE PRESENCE OF THE COUNTY ENGINEER.
BEFORE WORK CAN BE STARTED, THE CONTRACTOR MUST OBTAIN A PERMIT TO EXCAVATE IN COUNTY STREETS FROM THE L.A. COUNTY ROAD DEPT., DISTRICT OFFICE NO. 3000, AND PAY A FEE TO THE COUNTY ENGINEER, ROOM 302, COUNTY ENGINEERING BUILDING, 400 WEST SECOND STREET OR LAS VIRGENES, SANTA ANITA VALLEY, REGIONAL OFFICE, SUBVARIANT TO COVER THE COST OF CONSTRUCTION INSPECTION AND RECORD PLANS.
APPROVAL OF THIS PLAN BY THE COUNTY OF LOS ANGELES DOES NOT CONSTITUTE A REPRESENTATION AS TO THE ACCURACY OF THE LOCATION OF OR THE EXISTENCE OF NON-EXISTENCE OF ANY UNDERGROUND UTILITY PIPE, OR STRUCTURE WITHIN THE LIMITS OF THIS PROJECT. THIS NOTE APPLIES TO ALL PAGES.
IF WORK IS TO BE DONE IN A STATE HIGHWAY, A PERMIT MUST BE OBTAINED FROM THE STATE OF CALIFORNIA, DIVISION OF HIGHWAYS, 120 SOUTH SPRING STREET, LOS ANGELES, CALIFORNIA.

COUNTY OF LOS ANGELES, CALIFORNIA
JOHN A. LAMBIE, COUNTY ENGINEER
APPROVED BY: [Signature]
ASSISTANT SANITATION ENGINEER
SUBMITTED BY: [Signature]
REGIONAL ENGINEER
CHECKED BY: [Signature]
REG. C.E. NO. 14780

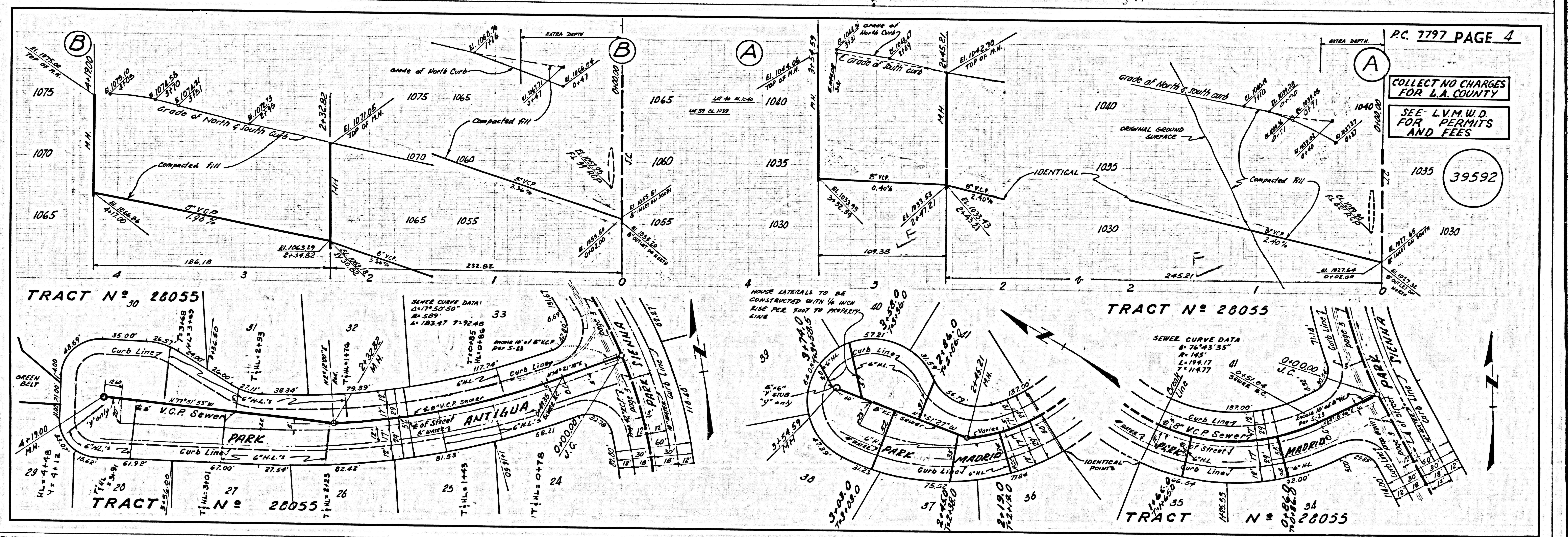
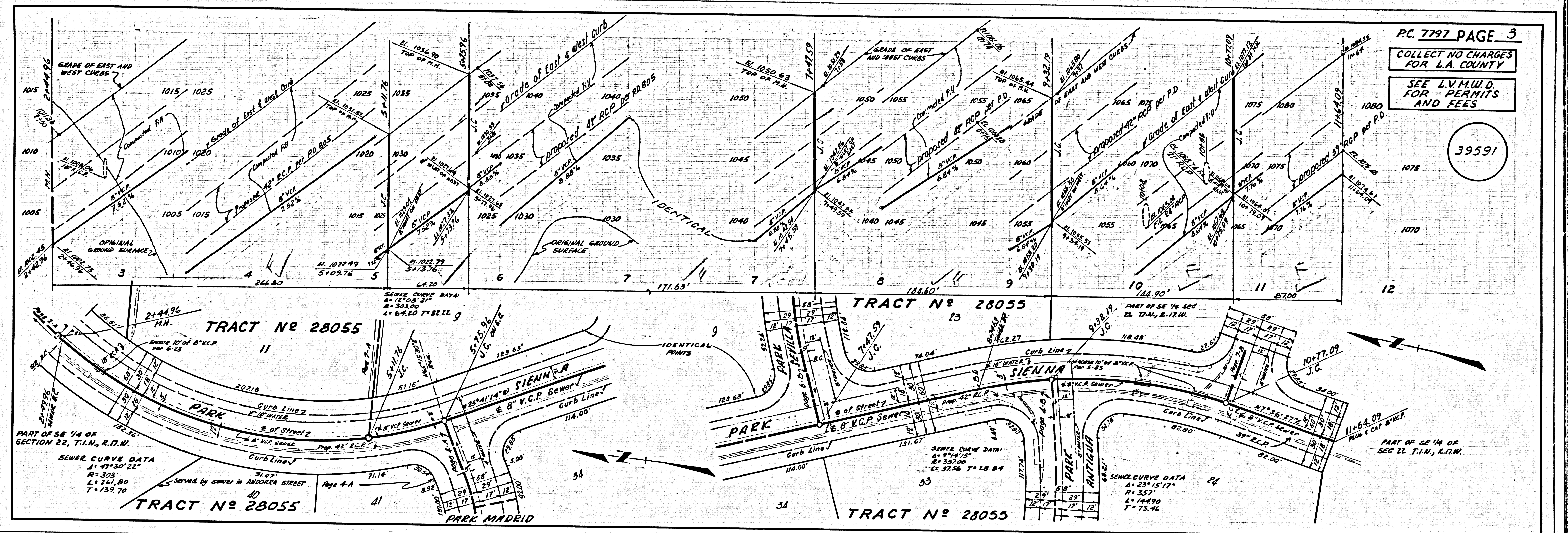
J.N. 0250.02

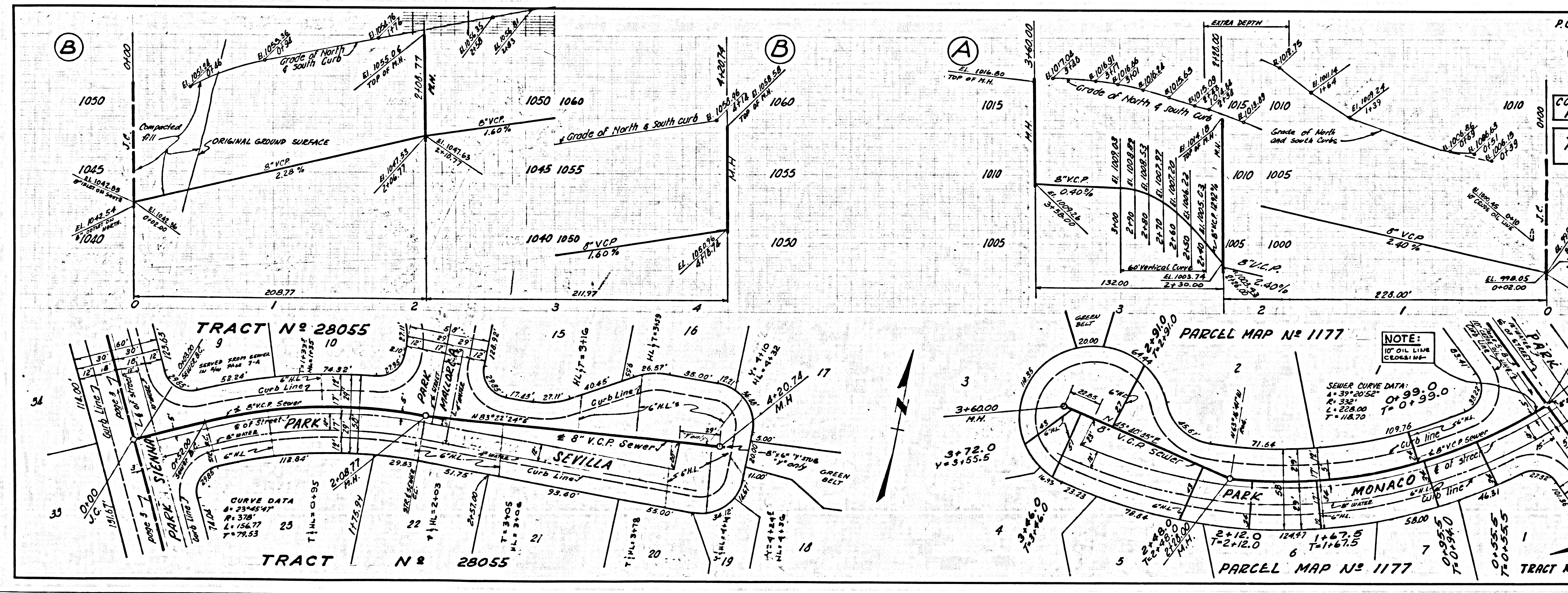
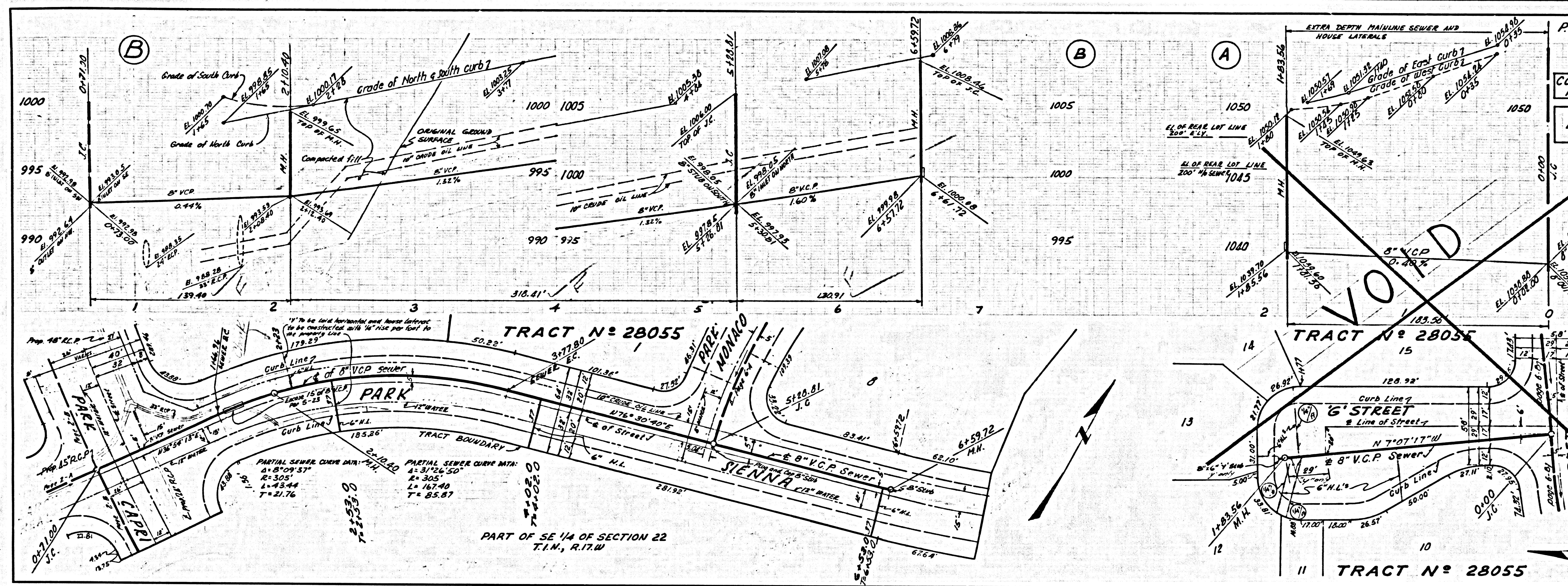


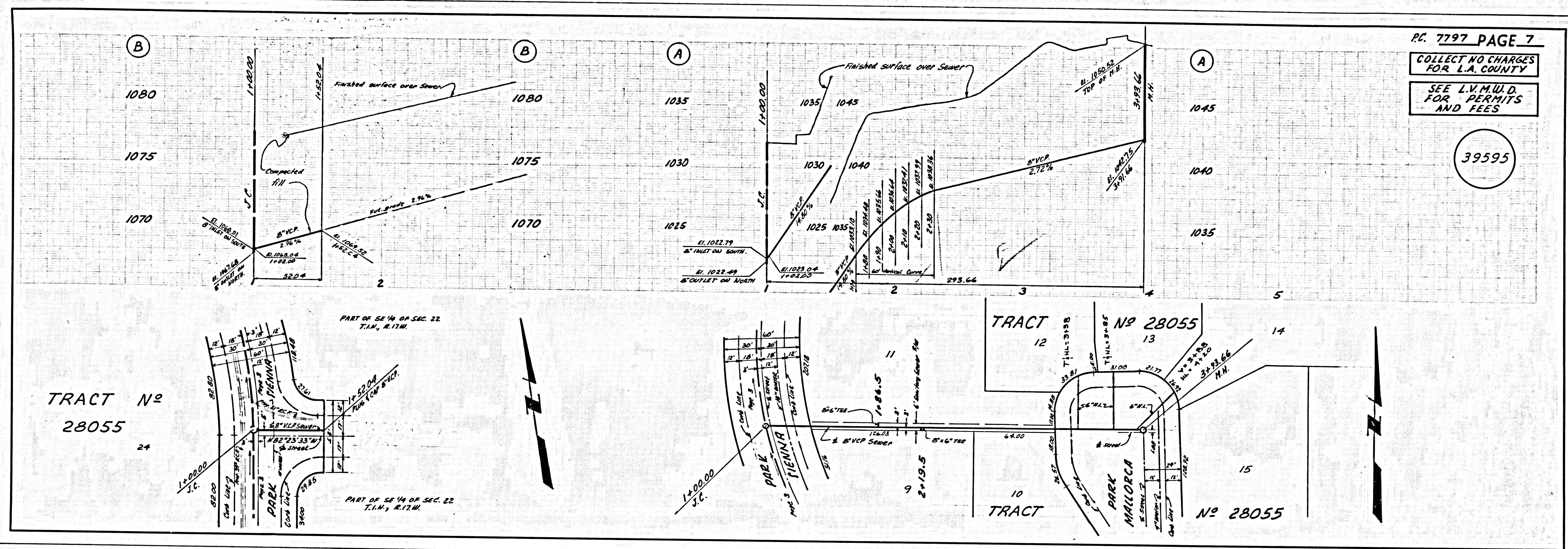
P.C. 7797 PAGE 2

COLLECT NO CHARGES FOR L.A. COUNTY
SEE L.V.M.W.D. FOR PERMITS AND FEES

39590







PC. 7797 PAGE 7
 COLLECT NO CHARGES
 FOR L.A. COUNTY
 SEE L.V.M.U.D.
 FOR PERMITS
 AND FEES

39595