

GENERAL SEWER NOTES

- 1 Sanitary sewers shall be constructed per Standard Specification for Construction of Sanitary Sewers Std. Spec. dated May 23, 1962, as revised, on file in the Office of the County Engineer and shall be prosecuted only in the presence of the County Engineer.
- 2 All structures shall be either brick masonry per S-3 or precast concrete manhole per S-5 or S-8, except as noted.
- 3 Use standard manhole frame & covers per Standard Plan S-12, except as noted.
- 4 Use manhole 2' dia. for 2' dia. pipes to comply with standard practice.
- 5 Existing service to be maintained at all times.
- 6 Resurface trenches within paved area of street per Section 69 of Std. Spec.
- 7 Abandoned portions of house laterals shall be sealed per Section 60 of Std. Spec.
- 8 For legend see Standard Plan S-1.
- 9 Use extra strength vitrified clay pipe.
- 10 Use minimum compression joints for all vitrified clay pipe sewers per Sections 36, 48 & 49 of Std. Spec.
- 11 The Contractor shall notify the Production Division of the County Engineer by telephone, 623-4747, Ext. 81551, at least 24 hours before starting any work on sanitary sewers.
- 12 No revisions shall be made without the approval of the County Engineer.
- 13 Approval of the sewer plans for this project by the County of Los Angeles does not constitute a representation as to the accuracy of the location of, or the existence or non-existence of any underground utility pipe or structure within the limits of this project.
- 14 Rectangular shallow manhole shall be constructed per S-7 with frame & cover per S-16.

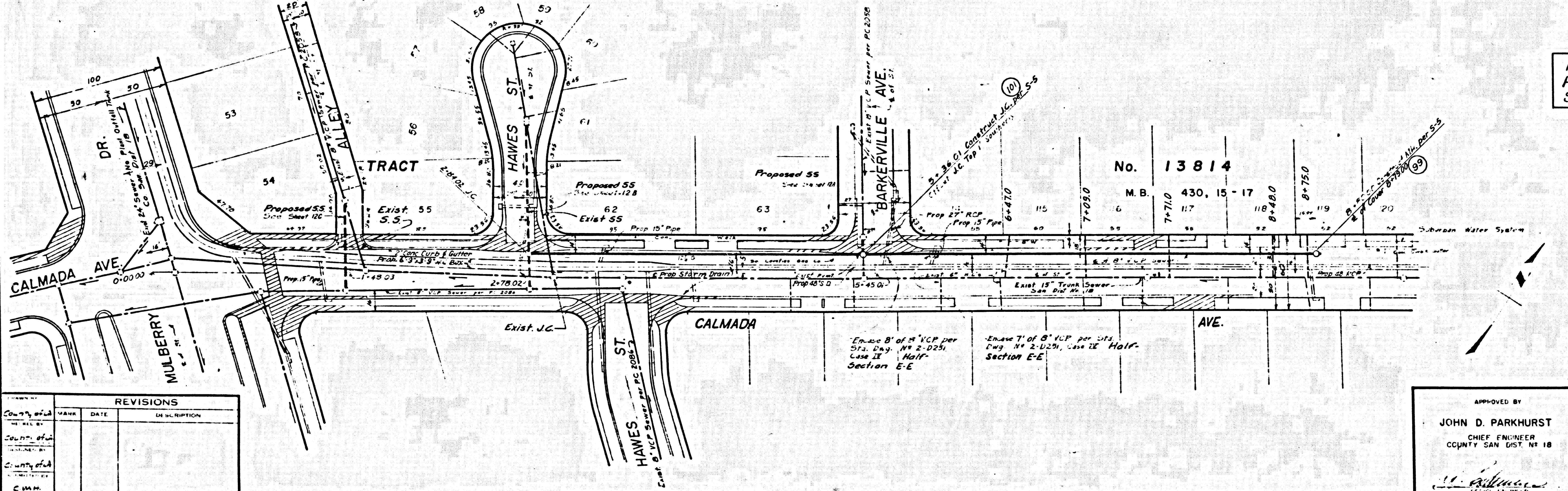
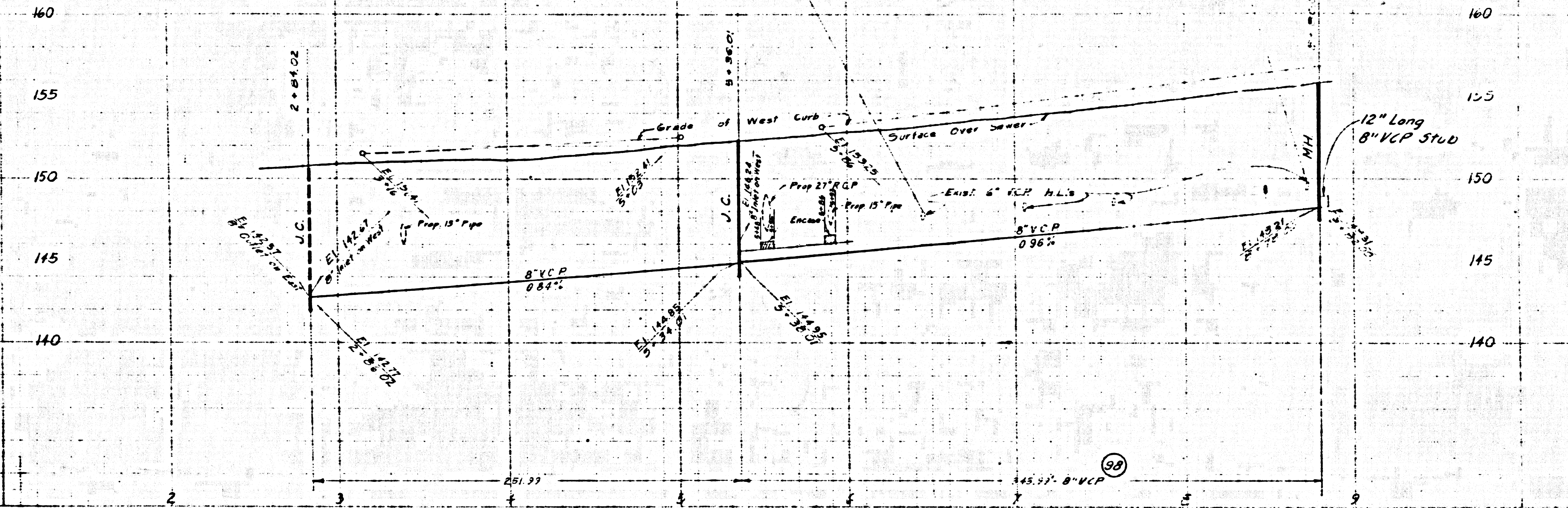
NO CHARGE FOR CONNECTIONS

FOR PLAN AND PROFILE OF PROPOSED STORM DRAIN, SEE SHEET 6

41403

BMSD-1244

PROFILE SCALE
Horiz. 1" = 40'
Vert. 1" = 4'



REVISIONS			
NO.	DATE	DESCRIPTION	BY

APPROVED BY
JOHN D. PARKHURST
CHIEF ENGINEER
COUNTY SAN DIST. NO. 18

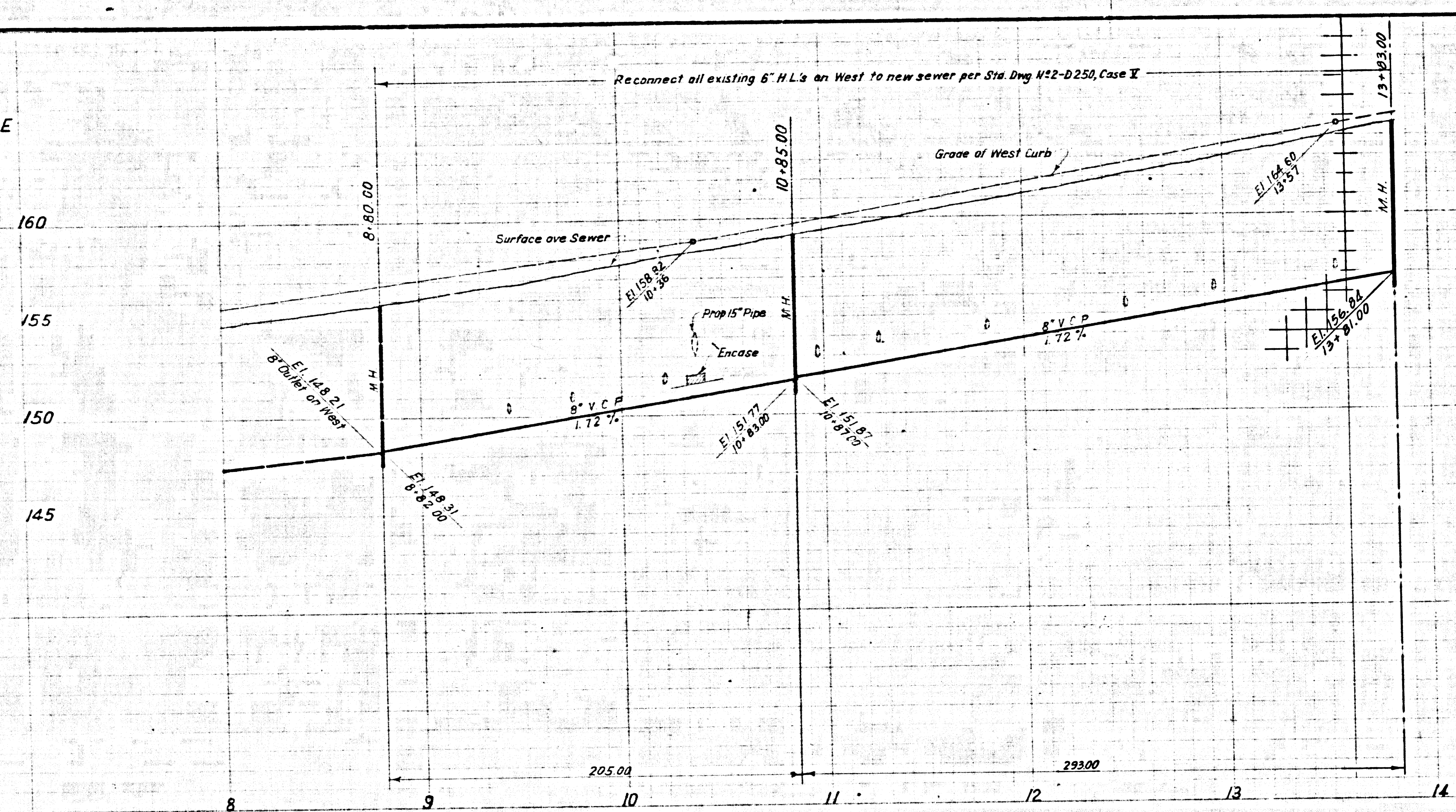
PREPARED BY
JOHN A. LAMBIE
COUNTY ENGINEER
P.C. NO. 7729
NO. 111405-57

1964 STORM DRAIN BOND ISSUE
LOS ANGELES COUNTY
FLOOD CONTROL DISTRICT

COUNTY
PROJECT NO. 1211, UNIT 2
SANITARY SEWER RECONSTRUCTION
PLAN AND PROFILE

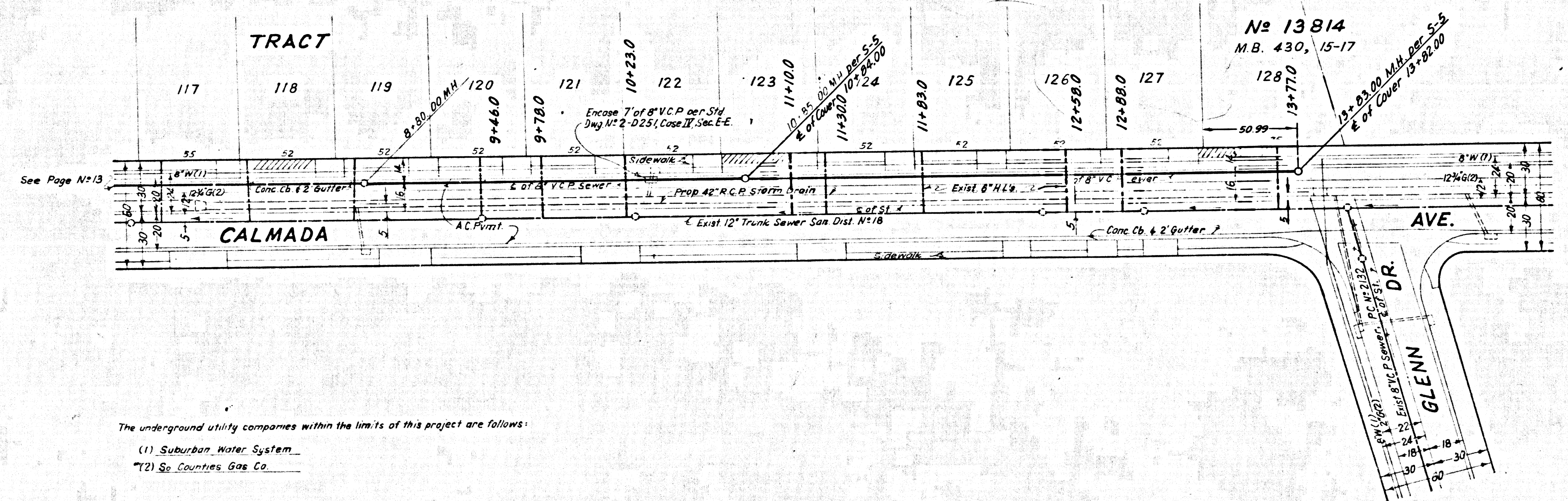
SCALE: HORIZ. 1" = 40' VERT. 1" = 4'
DATE: AUG '68
DWG. NO. 364-1211-04.13
SHEET 13 OF 16

PROFILE SCALE
 Horiz. : 1" = 40'
 Vert. : 1" = 4'



B MSD-1244

NO CHARGE
 FOR CONNECTIONS



NOTE: SEE PAGE 13 FOR
 GENERAL SEWER NOTES

91401

REVISIONS			
NO.	DATE	MARK	DESCRIPTION

The underground utility companies within the limits of this project are follows:
 (1) Suburban Water System
 (2) So. Counties Gas Co.

APPROVED BY
 JOHN D. PARKHURST
 CHIEF ENGINEER
 COUNTY SAN. DIST. NO. 18

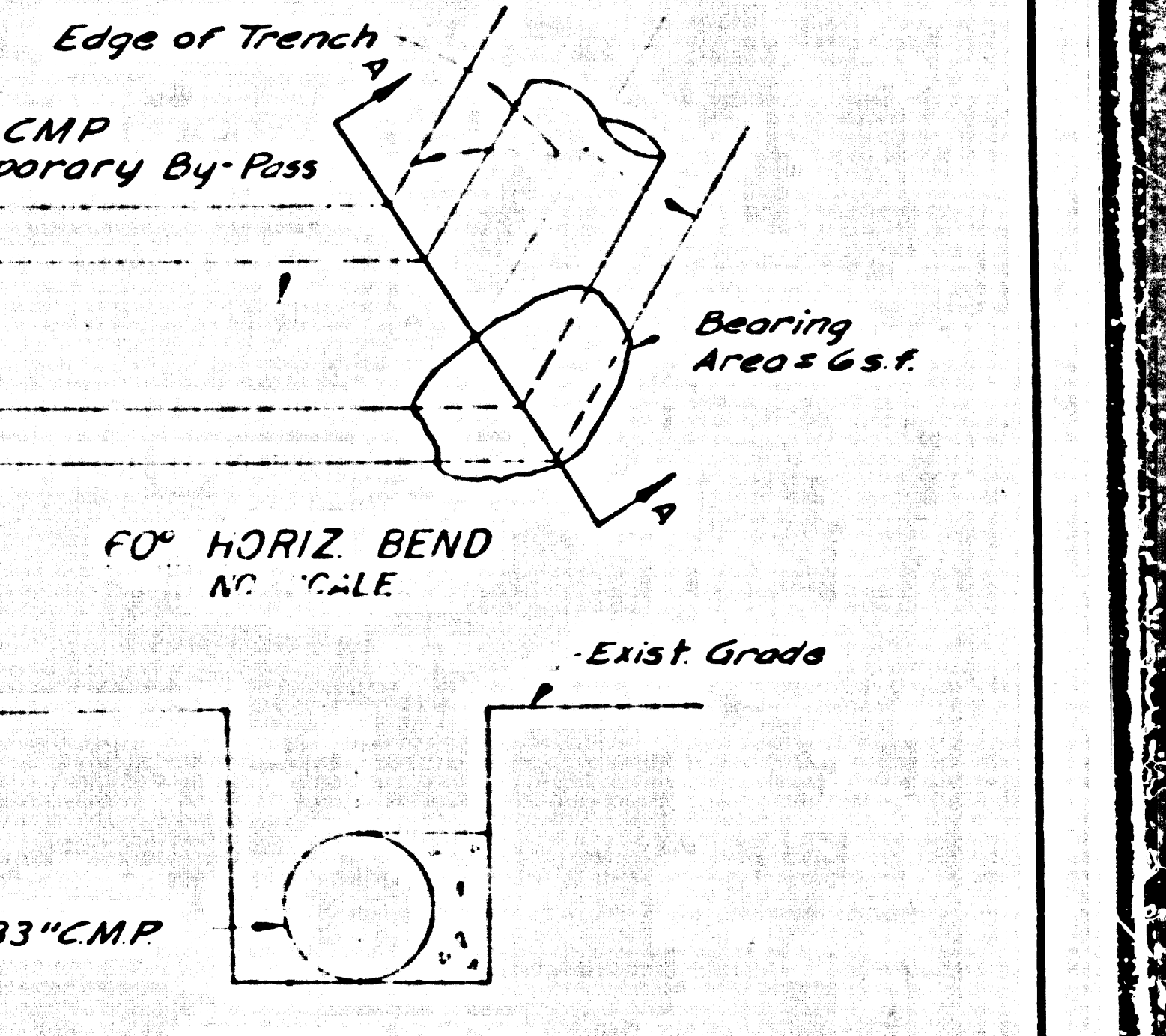
PREPARED BY
 JOHN A. LAMBIE
 COUNTY ENGINEER
 P.C. 7799
 RECOMMENDED BY
 [Signature]
 41ST DIVISION ENGINEER, SANITATION DIVISION

1964 STORM DRAIN BOND ISSUE
 LOS ANGELES COUNTY
 FLOOD CONTROL DISTRICT
 COUNTY
 PROJECT NO. 1211, UNIT 2
 SANITARY SEWER RECONSTRUCTION
 PLAN AND PROFILE
 RECOMMENDED BY
 [Signature]
 APPROVED BY
 [Signature]
 SCALE: 1" = 40' (HORIZ.), 1" = 4' (VERT.)
 DATE: JAN '69
 DWG. NO. 364-1211-D7
 SHEET 1 OF 1

PROFILE SCALE

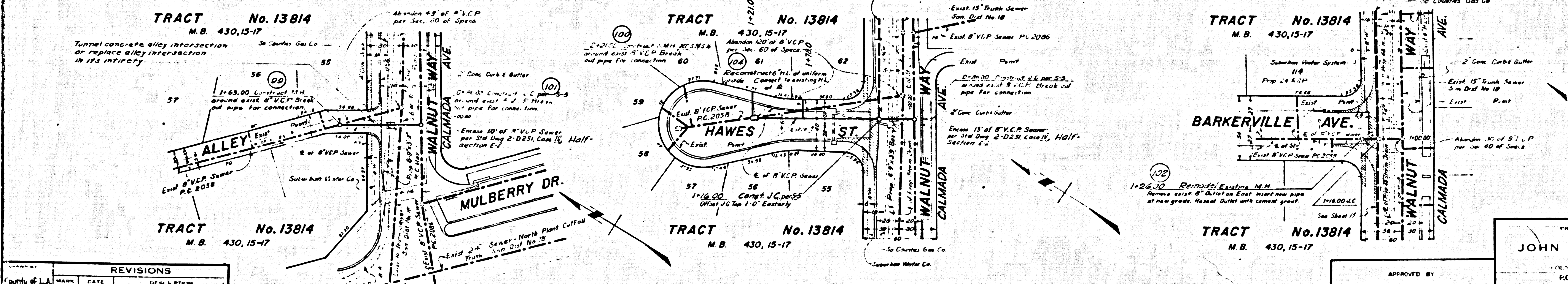
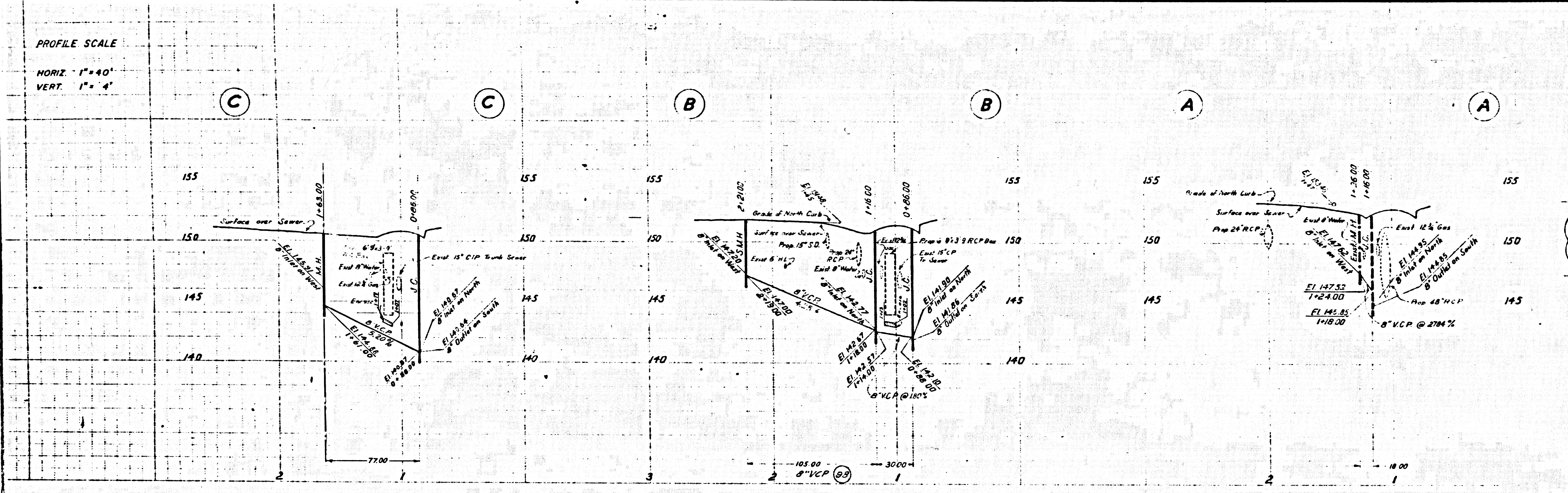
HORIZ. 1" = 40'
VERT. 1" = 4'

BM CD 243.57, 151.437, FB 3374-139.
CALMADA AVE & HAWES ST. S.E. Ctr.
BT. SPK. in L.D. 5' S. of So. Cb. Ref.



SECTION A-A
CONCRETE THRUST BLOCK DETAIL
NO SCALE

NOTE:
FOR PLAN AND PROFILE OF PROPOSED STORM DRAIN SEE SHEET 6



PLAN
Scale: 1" = 40'

NO CHARGE
FOR CONNECTIONS

1964 STORM DRAIN BOND ISSUE
LOS ANGELES COUNTY
FLOOD CONTROL DISTRICT

COUNTY
PROJECT NO. 1211, UNIT 2
SANITARY SEWER RECONSTRUCTION
PLAN AND PROFILE

REVISIONS		
MARK	DATE	DESCRIPTION

APPROVED BY
JOHN D. PARKHURST
CHIEF ENGINEER
COUNTY SAN. DIST. NO. 18

PREPARED BY
JOHN A. LAMBIE
ASSISTANT - SANITATION DIVISION ENGINEER

SCALE: HORIZ. 1" = 40'
DATE: AUG 68
DWG. NO. 364-1211-D4.22
SHEET 12 OF 15

16 pages 8-20
FB 3374 & Topo pages 33-38
3-1/2 inch pages 32-39

Cons. 154

GENERAL SEWER NOTES

- 1 Sanitary sewers shall be constructed per Standard Specification for Construction of Sanitary Sewers Std. Spec. dated May 25, 1962, as revised, on file in the Office of the County Engineer and shall be procured only in the presence of the County Engineer.
- 2 All structures shall be either brick manhole per S-3 or precast concrete manhole per S-5 or S-6, except as noted.
- 3 Use standard manhole frame & covers per Standard Specification for Manhole Frames & Covers, Std. Spec. dated May 25, 1962, as revised, on file in the Office of the County Engineer.
- 4 Use extra strength vitrified clay pipe.
- 5 Existing service to be maintained at all times.
- 6 Resurface trenches within paved area of street per Section 69 of Std. Spec.
- 7 Abandoned portions of house laterals shall be sealed per Section 60 of Std. Spec.
- 8 For legend see Standard Plan S-1.
- 9 Use extra strength vitrified clay pipe.
- 10 Use mechanical compression joints for all vitrified clay pipe sewers per Sections 36, 48 & 49 of Std. Spec.
- 11 The Contractor shall notify the Construction Division of the County Engineer by telephone, 621-4747, Ext. 21551, at least 24 hours before starting any work on sanitary sewers.
- 12 No revisions shall be made without the approval of the County Engineer.
- 13 Approval of the sewer plans for this project by the County of Los Angeles does not constitute a representation as to the accuracy of the location of, or the existence or non-existence of any underground utility pipe or structure within the limits of this project.
- 14 Rectangular shallow manhole shall be constructed per S-7 with frame B cover per S-16.

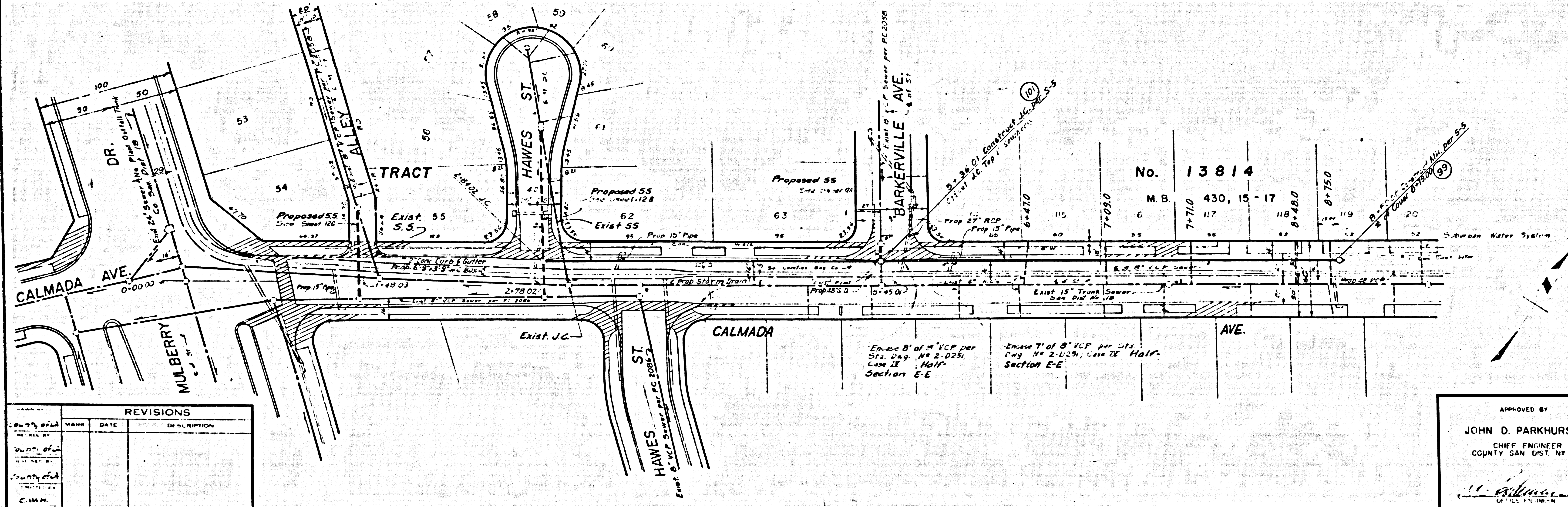
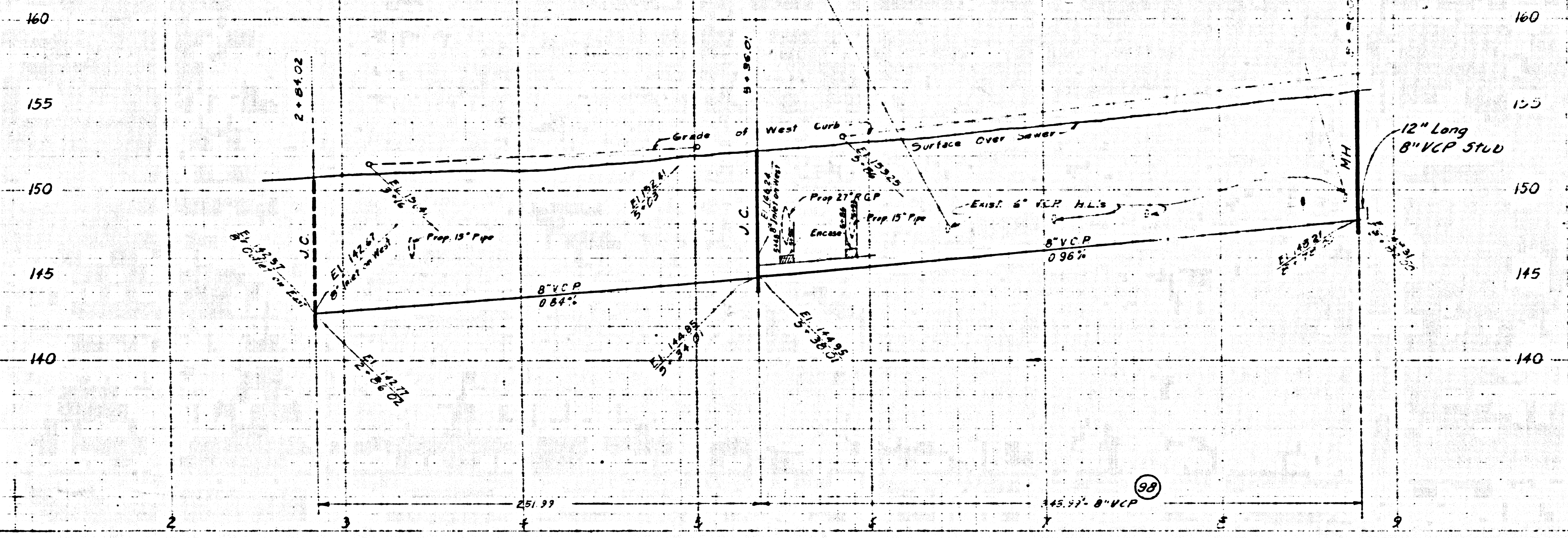
NO CHARGE FOR CONNECTIONS

FOR PLAN AND PROFILE OF PROPOSED STORM DRAIN, SEE SHEET 6

41403

B MSD-1244

PROFILE SCALE
 Horiz. 1" = 40'
 Vert. 1" = 4'



REVISIONS			
NO.	DATE	DESCRIPTION	BY

APPROVED BY
JOHN D. PARKHURST
 CHIEF ENGINEER
 COUNTY SAN. DIST. NO. 18

PREPARED BY
JOHN A. LAMBIE
 COUNTY ENGINEER
 P.C. NO. 7733
 RECOMMENDED BY
 [Signature]
 [Signature]
 [Signature]

1964 STORM DRAIN BOND ISSUE
 LOS ANGELES COUNTY
 FLOOD CONTROL DISTRICT

COUNTY
PROJECT NO. 1211, UNIT 2

SANITARY SEWER RECONSTRUCTION
PLAN AND PROFILE

SCALE: HORIZ. 1" = 40' VERT. 1" = 4'
 DATE: AUG '68
 DWG. NO. 364-1211-D4.13
 SHEET 13 OF 16