

B.M. SY-5641 ELEV. 946.274
 CHIS. 80. ON W. SIDE C/S (DROP INLET)
 ON C/L VENTURA BOULEVARD @
 870.50 ± 0.5 ± 3 MILES W.
 CORNELL ROAD.
 MALIBU QUAD. 1960

DOUBLE SCALE
 CALABASAS BLDG. DIST. NO. 9.1

PROFILE, ALIGNMENT AND GRADE OF
 SANITARY SEWERS PAGE 1
 TO BE CONSTRUCTED IN

TRACT No. 26946
 PRIVATE CONTRACT NO. 7806

W.S. 93
 5 SHEETS; 2 PAGES
 SCALE: VERT. 1"=8'
 HORIZ. 1"=60' JAN. 1967

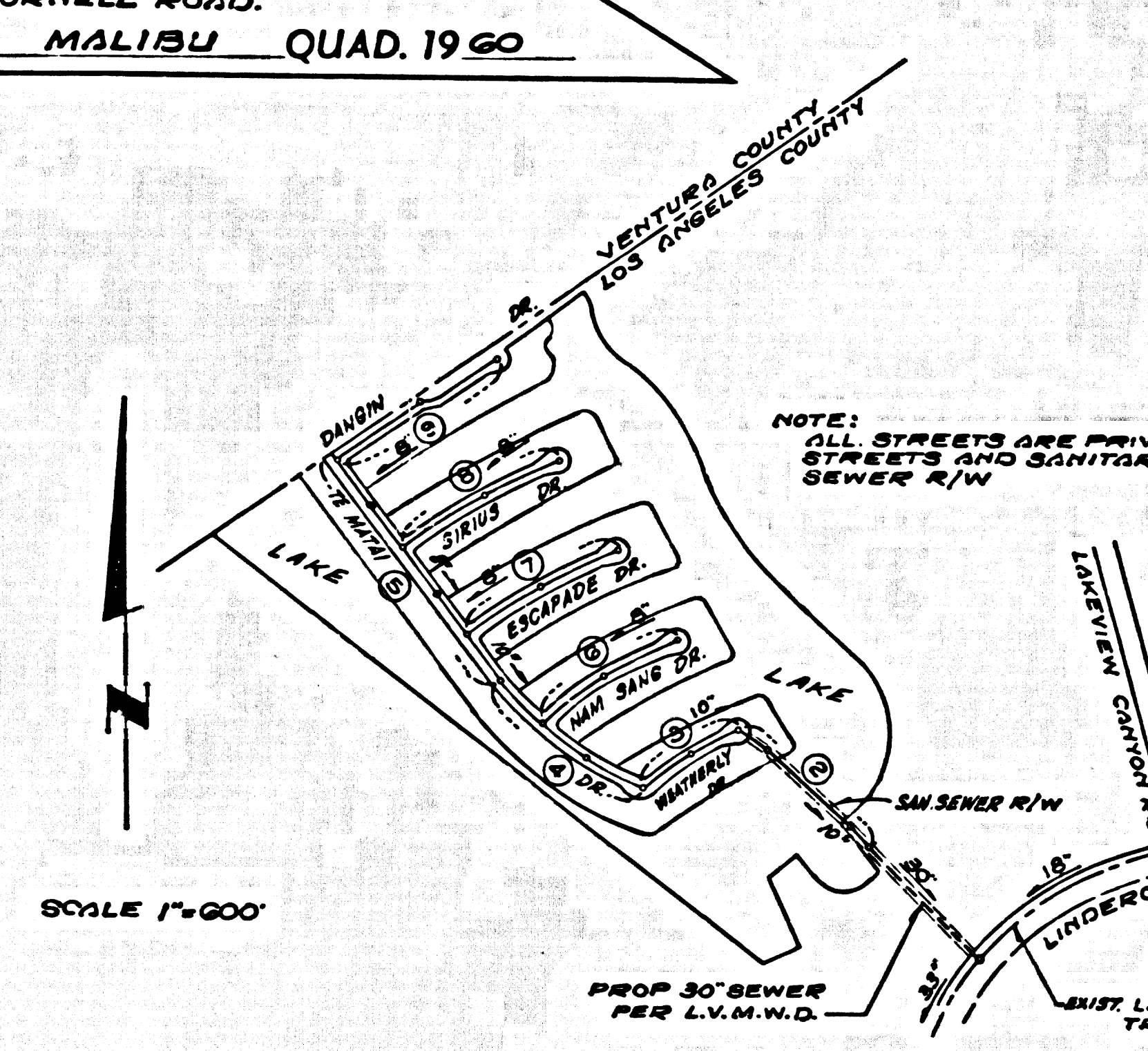
PREPARED IN THE OFFICES OF
 MCINTIRE AND QUIROS, INC.
 670 MONTEREY PASS ROAD
 MONTEREY PARK, CALIF.
 TEL. 283-7661, 289-5111

FOR LEGEND SEE PLAN NO. S-1

NOTE: GRADES TO WHICH THIS IMPROVEMENT IS TO BE CONSTRUCTED ARE SHOWN ON PLANS AND PROFILES. GRADE POINTS FOR TOP OF CURB, CENTER LINE OF STREETS, OR CENTER LINE OF ALLEYS ARE SHOWN BY CIRCLES ON PROFILES. AT ALL POINTS BETWEEN DESIGNATED POINTS THE GRADE SHALL BE ESTABLISHED SO AS TO CONFORM TO A STRAIGHT LINE DRAWN BETWEEN SAID DESIGNATED POINTS. ELEVATIONS ARE IN FEET ABOVE U.S.C. & G.S. MEAN SEA LEVEL UNLESS OTHERWISE SPECIFIED. THIS DRAWING AND THE DATA HEREON ARE HEREBY MADE A PART OF THE SPECIFICATIONS. BEFORE WORK CAN BE STARTED, THE CONTRACTOR MUST OBTAIN A PERMIT TO EXCAVATE IN COUNTY STREETS FROM THE L.A. COUNTY ROAD DEPT., DISTRICT OFFICE, 100 S. GARDEN ST., LOS ANGELES, CALIF. 90012, IN THE PRESENCE OF THE COUNTY ENGINEER. THE CONTRACTOR SHALL BE RESPONSIBLE FOR OBTAINING ALL NECESSARY PERMITS AND FOR THE COST OF THE CONSTRUCTION INSPECTION AND SECOND PLANS. APPROVAL OF THIS PLAN BY THE COUNTY OF LOS ANGELES DOES NOT CONSTITUTE A REPRESENTATION AS TO THE ACCURACY OF THE LOCATION OF OR THE EXISTENCE OR NON-EXISTENCE OF ANY UNDERGROUND UTILITY PIPE, OR STRUCTURE WITHIN THE LIMITS OF THIS PROJECT. THIS NOTE APPLIES TO ALL PAGES. IF WORK IS TO BE DONE IN A STATE HIGHWAY, A PERMIT MUST BE OBTAINED FROM THE STATE OF CALIFORNIA, DIVISION OF HIGHWAYS, THE SOUTH BRIDGE STREET, LOS ANGELES, CALIFORNIA.

COUNTY OF LOS ANGELES, CALIFORNIA
 JOHN A. LAMMIE, COUNTY ENGINEER
 APPROVED BY: *Russ S. Khan* ASSISTANT SANITATION ENGINEER
 APPROVED BY: *Neil Stiles* GENERAL MGR. CHIEF ENGINEER
 SUBMITTED BY: *Edward J. Valachi* REGIONAL ENGINEER
 CHECKED BY: *Edward J. Valachi* CIVIL ENGINEER
 REG. C.E. NO. 10653

J.N.0250.02

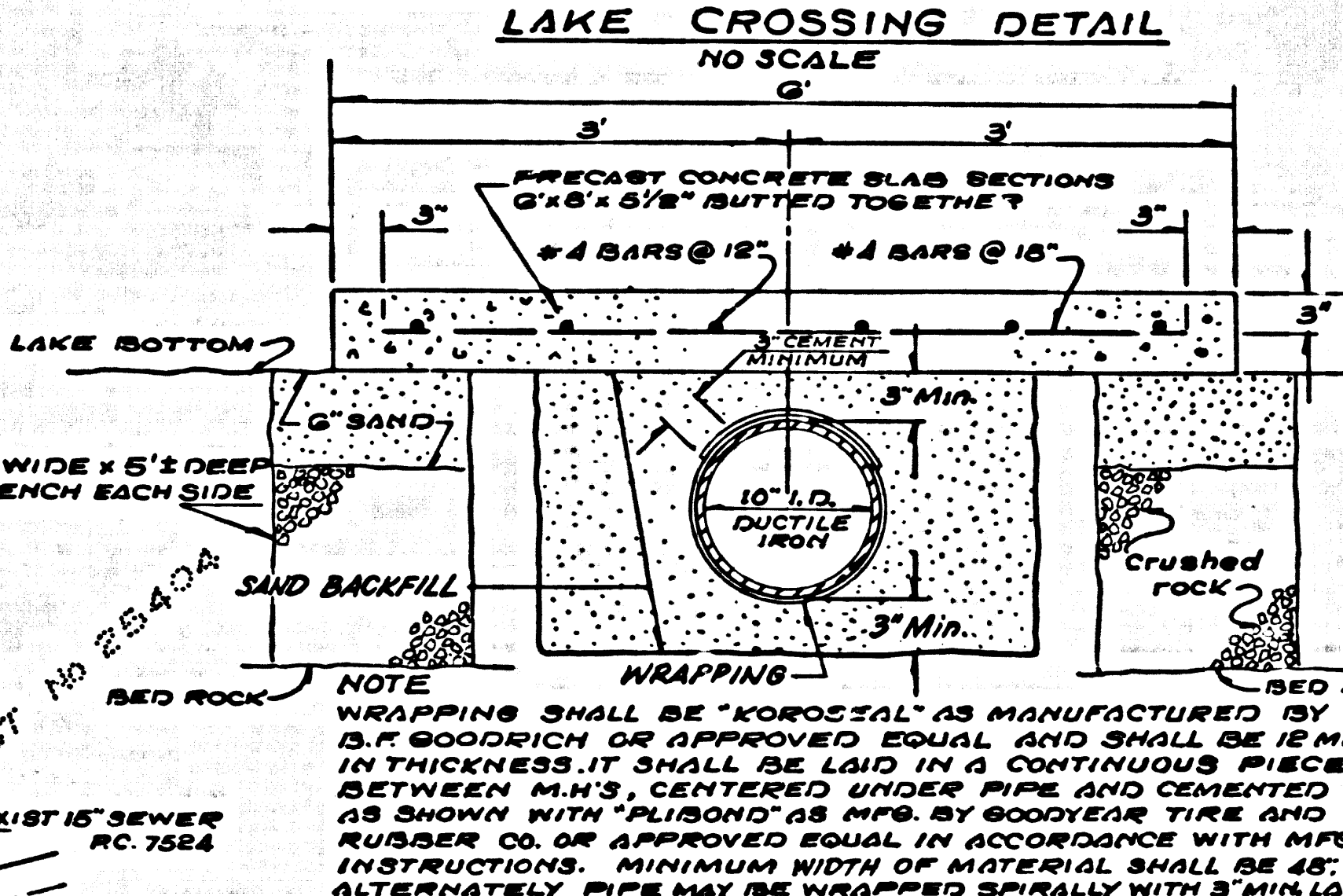


INDEX MAP
 P.C. 7806

NOTE: Number in circle indicates page number

REVISION: AUGUST 31, 1967
 PAGE 1 - REVISED CONSTRUCTION DETAIL
 PAGE 2 - REMOVED FROM 36" C.M.P. UNDER SEWERS AND REVISED CONTIGUOUS OF LAKE BOTTOM.
 APPROVED: *Edward J. Valachi*
 OFFICE OF COUNTY ENGINEER

THE ACCURACY OF THE LOCATION OF OR THE EXISTENCE OR NON-EXISTENCE OF ANY UTILITY PIPE OR STRUCTURE WITHIN THE LIMITS OF THIS PROJECT DOES NOT CONSTITUTE RESPONSIBILITY BY THE ENGINEER.



NOTE: WRAPPING SHALL BE "KOROSAL" AS MANUFACTURED BY B.F. GOODRICH OR APPROVED EQUAL AND SHALL BE 1/8" THICK. IT SHALL BE LAID IN A CONTINUOUS PIECE BETWEEN M.H.'S, CENTERED UNDER PIPE AND CEMENTED AS SHOWN WITH "RUBBER" AS M.P.B. BY GOODRICH TYPE 310 RUBBER CO. OR APPROVED EQUAL IN ACCORDANCE WITH M.P.B.'S INSTRUCTIONS. MINIMUM WIDTH OF MATERIAL SHALL BE 4". ALTERNATELY PIPE MAY BE WRAPPED SEPARATELY WITH 3" WICKEN & CEMENT.

TESTING PER LAS VIRGENES MUNICIPAL WATER DISTRICT

1. INFILTRATION AND LEAKAGE TEST: METHOD USED FOR TESTING WILL BE THE SAME AS LOS ANGELES COUNTY EXCEPT THE FORMULA TO BE USED IS AS FOLLOWS: 0.03 GALLONS / MINUTE / INCH OF DIAMETER / 1000 FEET OR 250 GALLONS / DAY / INCH OF DIAMETER / MILE
2. MANHOLE LEAKAGE TEST: AT THE DISCRETION OF THE DISTRICT'S REPRESENTATIVE ONE MANHOLE OUT OF TEN MANHOLES AND A MINIMUM OF TWO WILL BE FILLED WITH WATER AND AFTER THREE HOURS WILL BE CHECKED FOR LEAKAGE WITH NO DROP IN LEVEL. FOR EVERY MANHOLE NOT POSING TESTS FIVE MORE WILL BE TESTED AT THE DISCRETION OF THE DISTRICT'S REPRESENTATIVE
3. AIR TESTING: WHERE THE DIFFERENCE IN ELEVATION BETWEEN THE INVERT OF THE LINED STRUCTURE AND THE INVERT OF THE LOWER STRUCTURE IS MORE THAN ONE FEET AN AIR TEST WILL BE MADE ON ALL PORTION OF THE WORK. THE TIME TAKEN TO LOSE ONE (1) POUND PER SQUARE INCH GAUGE PRESSURE FROM THREE (3) POUNDS PER SQUARE INCH GAUGE PRESSURE TO TWO (2) POUNDS PER SQUARE INCH GAUGE PRESSURE SHALL NOT BE LESS THAN TIMES SHOWN ON THE FOLLOWING TABLE

MAIN PIPE DIAMETER	MINIMUM TIME LOSE
6" - 14"	1 MINUTE
16" - 20"	2 MINUTES
24" - 30"	3 MINUTES
36" - 48"	4 MINUTES

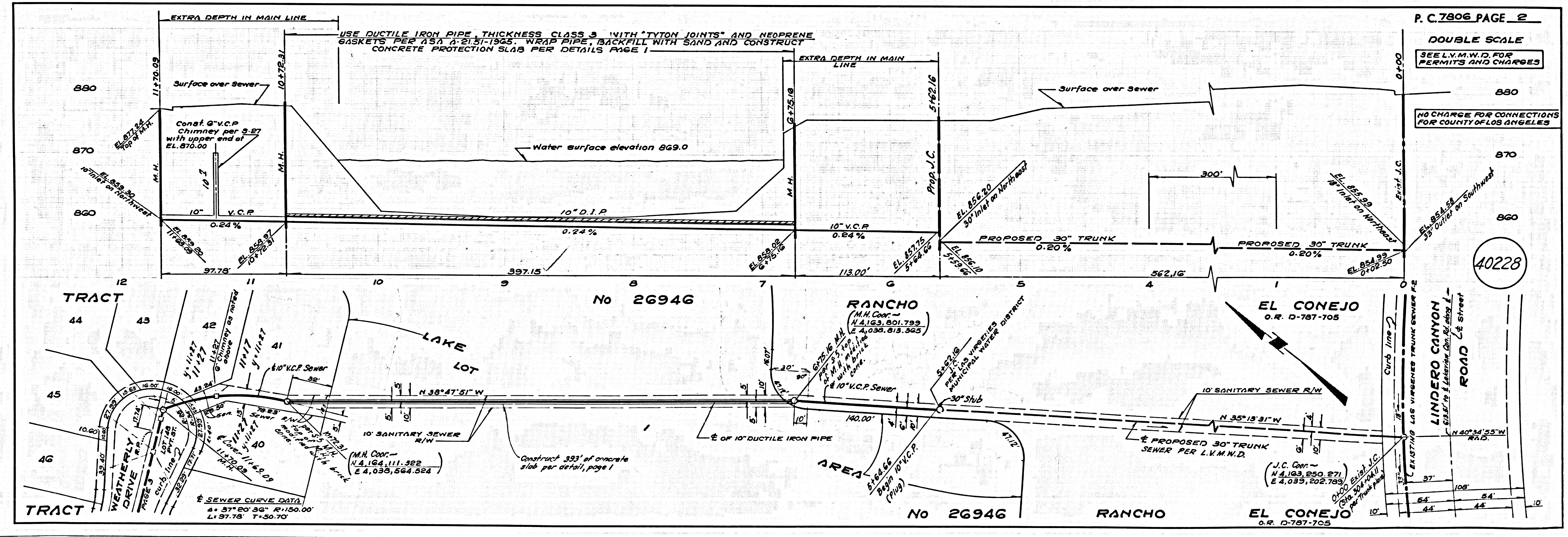
IF THE TIME IS LESS THAN LISTED IN THE TABLE ABOVE THE CONTRACTOR SHALL MAKE SUCH REPAIRS AS ARE NECESSARY TO ELIMINATE EXCESSIVE LEAKAGE.

- NOTES:
1. PROFILE STAKES ON THE PROPERTY LINE OR PROPERTY LINES PRODUCED AT RIGHT ANGLES TO THE SEWER LINE AT THE CENTER LINE OF EACH MANHOLE.
 2. NO REPRESENTATIVE OF THE COUNTY ENGINEER WILL SURVEY OR LAY OUT ANY PORTION OF THE WORK.
 3. THE PRIVATE ENGINEER SHALL FURNISH THE COUNTY ENGINEER WITH GRADE SHEETS AND STATIONING FOR ALL HOUSE LATERALS AND "T" BRANCHES AND SHALL PROVIDE STAKES FOR THESE AT THEIR PROPER LOCATIONS WITH STATIONING PLAINLY MARKED. ALL HOUSE LATERALS SHALL BE CONSTRUCTED IN A STRAIGHT ALIGNMENT AT RIGHT ANGLES FROM THE MAIN LINE SEWER EXCEPT AS SHOWN ON THE PLANS. HOUSE LATERALS FROM CHIMNEYS SHALL NOT HAVE AN ANGLE OF LESS THAN 45° WITH THE MAIN LINE SEWER. ANY CHANGE IN ALIGNMENT SHALL BE REQUESTED BY WRITING BY THE PRIVATE ENGINEER.
 4. THE PRIVATE ENGINEER SHALL FURNISH THE HOUSE LATERAL DEPTH AT THE PROPERTY LINE BELOW THE TOP OF CURB 8" ATION FOR EACH HOUSE LATERAL ON THE GRADE SHEET.
 5. NO REVISIONS SHALL BE MADE IN THESE PLANS WITHOUT THE APPROVAL OF THE COUNTY ENGINEER.
 6. THE CONTRACTOR SHALL NOTIFY THE CONSTRUCTION DIVISION BY TELEPHONE, MADISON 9-27, EXT. 8158, AT LEAST TWENTY-FOUR HOURS BEFORE STARTING ANY WORK UNDER THIS CONTRACT.
 7. ALL STRUCTURES SHALL BE EITHER BRICK MANHOLES PER S-8 OR PRECAST CONCRETE MANHOLES PER S-9 OR S-10 EXCEPT AS NOTED.
 8. USE STANDARD MANHOLE FRAMES AND COVERS, S-15, EXCEPT AS NOTED.
 9. MANHOLES FOR UNIMPROVED RIGHTS-OF-WAY TO BE SIX INCHES ABOVE FINISHED GRADE.
 10. USE EXTRA STRENGTH PIPE, ALL PIPE IS STANDARD DEPTH EXCEPT AS NOTED.
 11. USE MECHANICAL COMPRESSION JOINTS FOR ALL V.C.P. JOINTS PER SPEC., SECT. 24, 25, & 26.
 12. IF A POWER POLE IS WITHIN THREE FEET OF THE SEWER, THE SEWER SHALL BE ENCASED, PER S-25, TWO FEET ON EACH SIDE FROM THE POINT OF INTERFERENCE.
 13. IF DURING THE COURSE OF CONSTRUCTION IT IS DETERMINED THAT THERE IS LESS THAN FOUR FEET OF COVER OVER THE TOP OF A MAIN LINE OR HOUSE LATERAL V.C.P. SEWER WHICH IS NOT INDICATED ON THE PLANS, THE PIPE SHALL BE ENCASED PER S-25, UNLESS OTHERWISE APPROVED BY THE COUNTY ENGINEER.
 14. HOUSE LATERALS TO BE CONSTRUCTED WITH INVERTS AT PROPERTY LINE 6 FEET BELOW CURB GRADE EXCEPT AS NOTED.
 15. REINFORCE ALL TRENCHES WITHIN PAVED AREAS TO MEET L.A. COUNTY ROAD DEPT. OR CALIFORNIA STATE HIGHWAY REQUIREMENTS IN ACCORDANCE WITH PERMITS.
 16. FOR ALLOWABLE LEAKAGE TEST USE FORMULA NO. 2, SPEC. 5, SEC. 54.
 17. ALL STATE AND LOCAL TRENCH SAFETY ORDERS WILL BE STRICTLY ENFORCED.
 18. CONSTRUCTION IN FILLED AREAS:
 - a. AN ACCEPTABLE CERTIFICATION OF COMPACTION TEST RESULTS SHALL BE SUBMITTED TO THE CONSTRUCTION DIVISION. COMPACTION TESTS ARE TO BE MADE IN ACCORDANCE WITH A.S.T.M. STANDARD METHOD OF TEST 99-47.
 - b. NO CONSTRUCTION IS PERMITTED IN FILLED AREAS WHERE THE RELATIVE DENSITY OF COMPACTION IS LESS THAN 80%.
 - c. IF THE RELATIVE DENSITY OF COMPACTION IS 75% OR GREATER, THE SPECIAL PROVISIONS IN (a) ARE NOT REQUIRED.
 - d. WHERE THE WATER IS EXPOSED DURING CONSTRUCTION OF HOUSE LATERALS, LATERALS MAY BE LAID ON A MINIMUM ANGLE OF 45° TO A POINT ABOVE THE WATER TABLE BUT WITH NOT LESS THAN 18" COVER PER FOOT FROM POINT TO THE 45° POINT TO THE 45° POINT OF THE PROPERTY LINE.

REVISIONS: ADDED NOTE 18 TO GENERAL NOTES. 6-19-67
 PAGE 2 - CHANGED ALIGNMENT & RAISED GRADES
 PAGES 7, 8, 9 - RAISED GRADES
 T BRANCHES - ALL 1" IN PLACE OF 1/2" BRANCHES, EXCEPT AS NOTED
 REVISION APPROVED: *Edward J. Valachi*
 OFFICE OF COUNTY ENGINEER

COLLECT CHARGES AS INDICATED
L. Austin Stiles

DO NOT ISSUE HOUSE CONNECTION PERMITS UNTIL OUTLET IS AVAILABLE

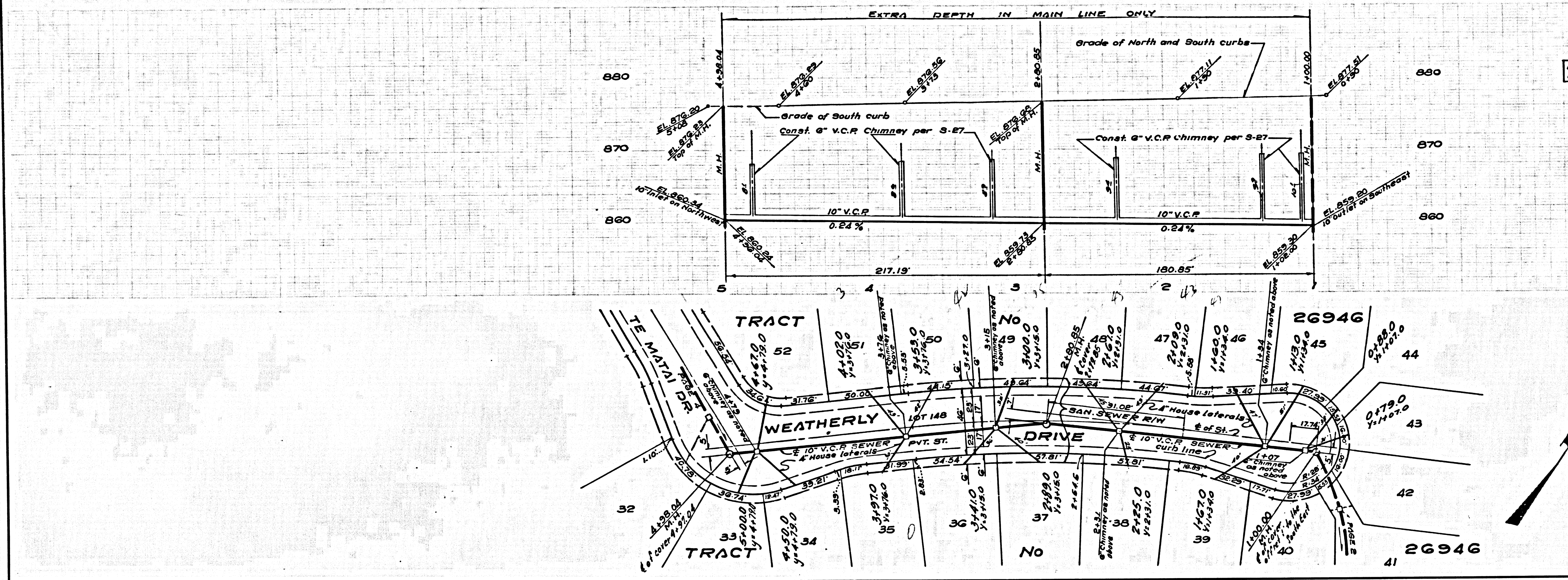


P.C. 7806 PAGE 2
 DOUBLE SCALE
 SEE L.V.M.W.D. FOR PERMITS AND CHARGES
 NO CHARGE FOR CONNECTIONS FOR COUNTY OF LOS ANGELES

40228

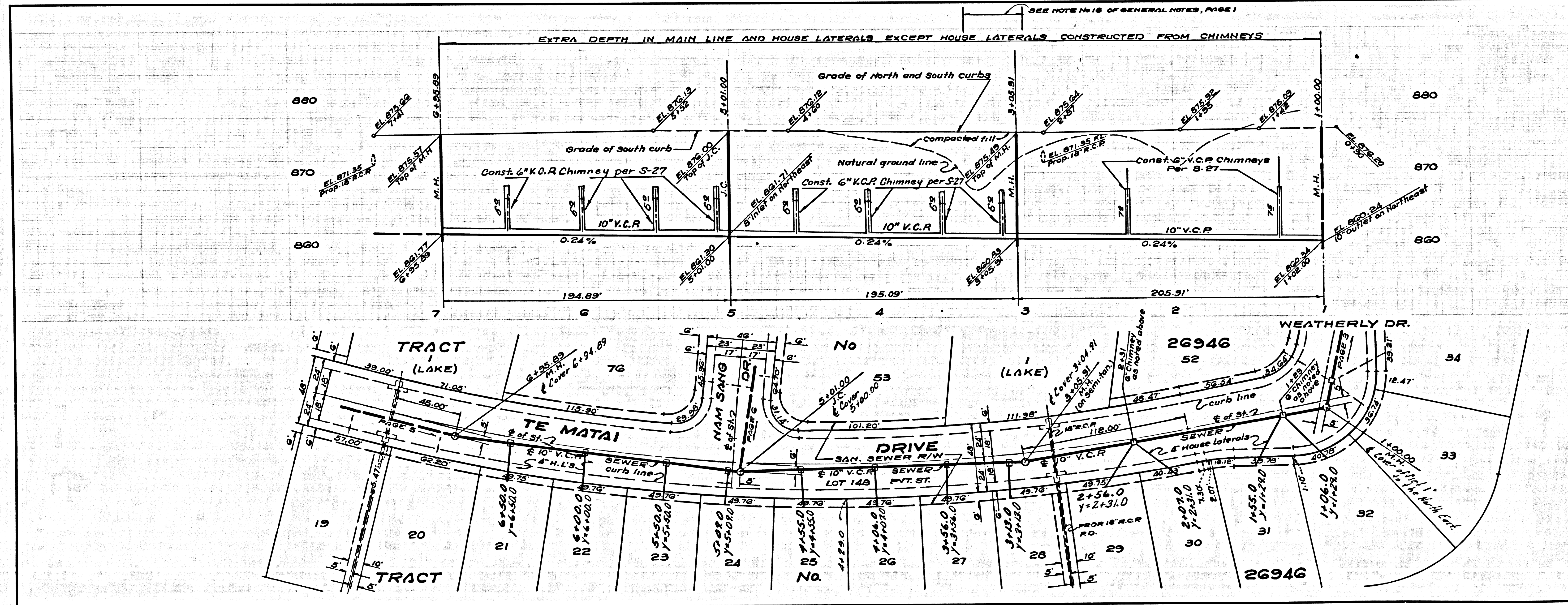
SEE L.V.M.W.D. FOR PERMITS AND CHARGES
NO CHARGE FOR CONNECTIONS FOR COUNTY OF LOS ANGELES

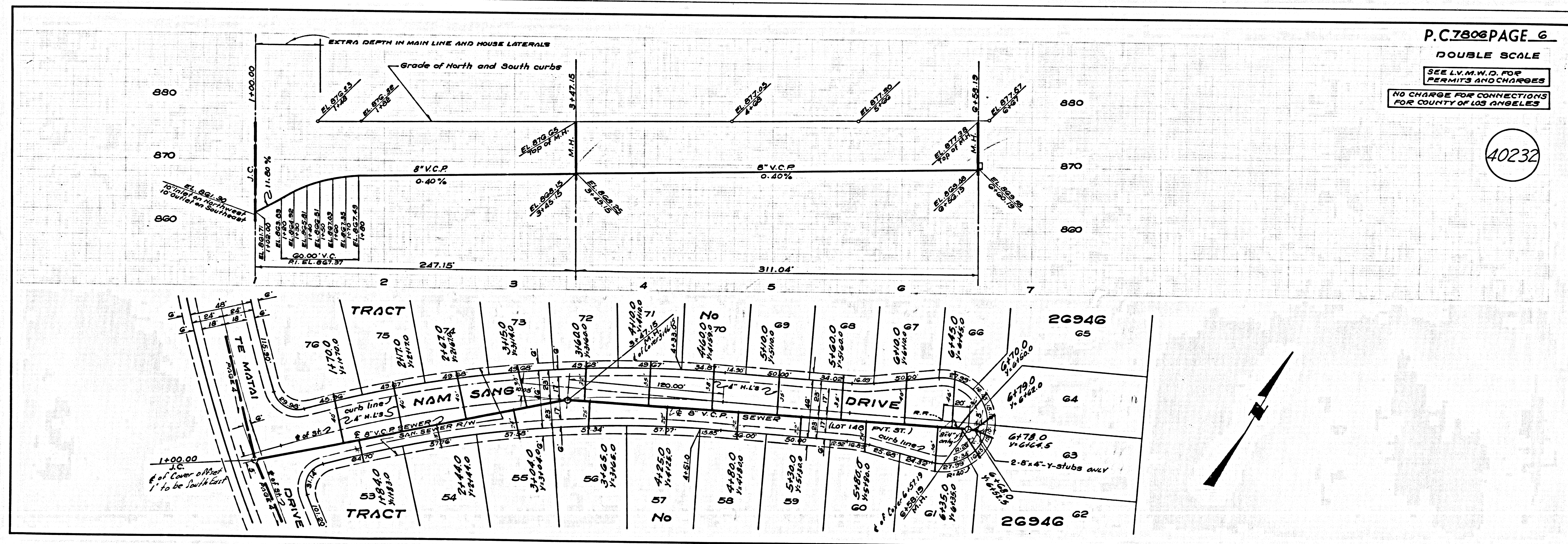
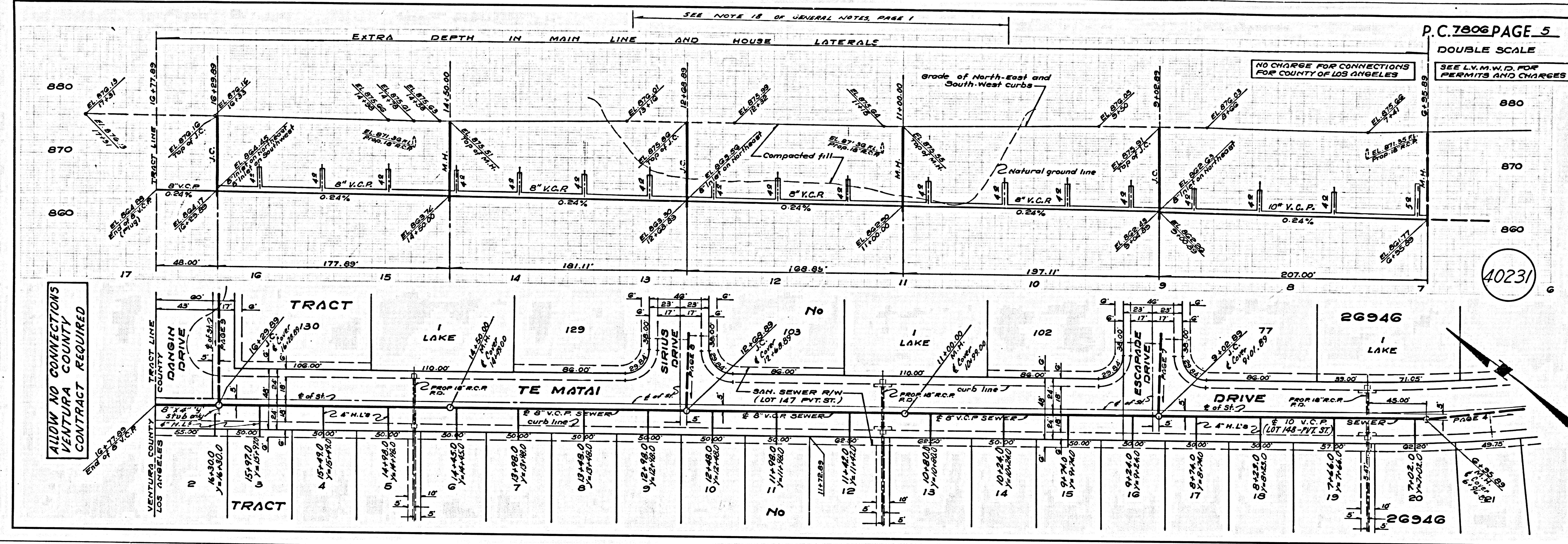
40229

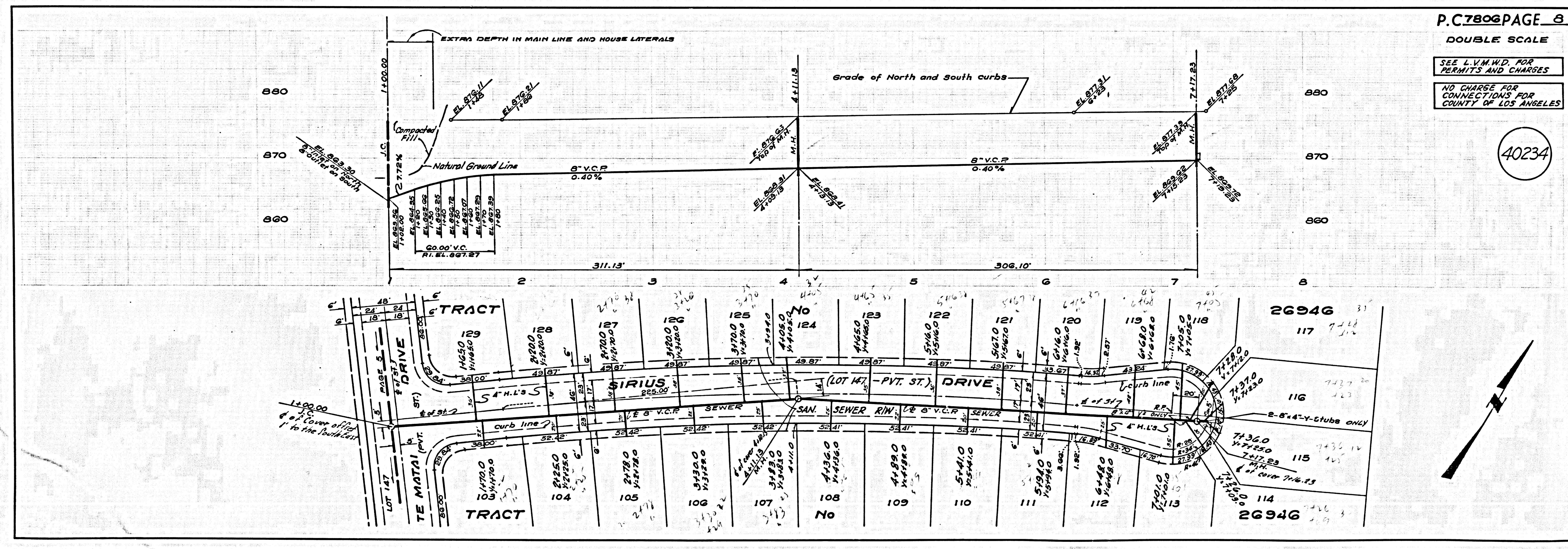
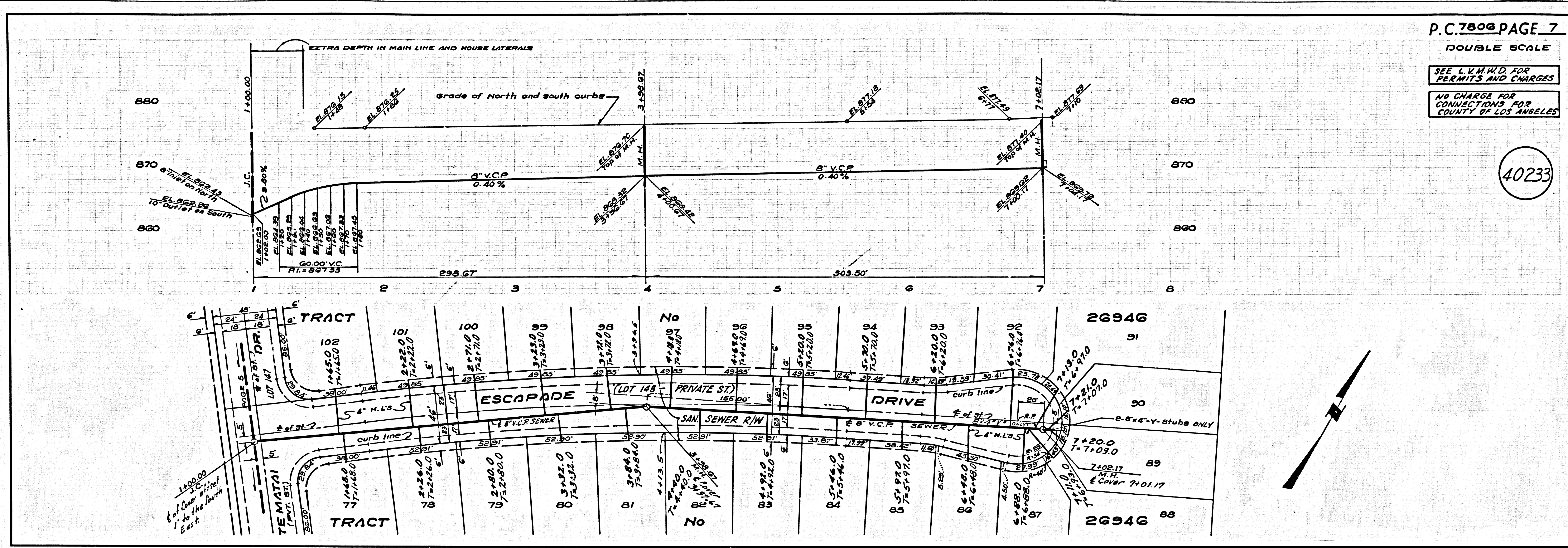


SEE L.V.M.W.D. FOR PERMITS AND CHARGES
NO CHARGE FOR CONNECTIONS FOR COUNTY OF LOS ANGELES

40230



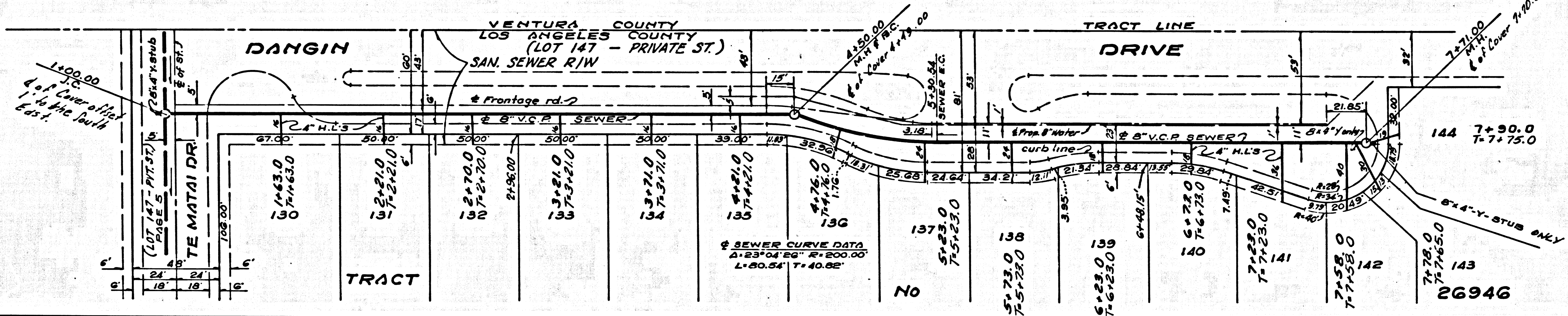
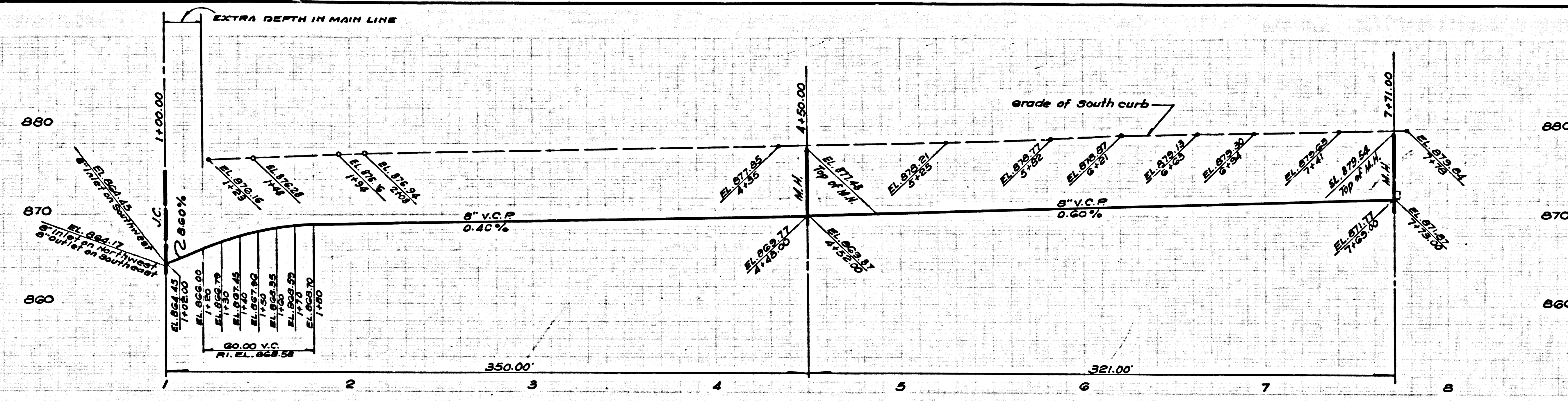




4
 2007.04 09:55 AM 10/11/11

SEE L.V.M.W.D. FOR PERMITS AND CHARGES
NO CHARGE FOR CONNECTIONS FOR COUNTY OF LOS ANGELES

40235



SEWER CURVE DATA
Δ 23° 04' 28" R = 200.00'
L = 80.54' T = 40.88'