

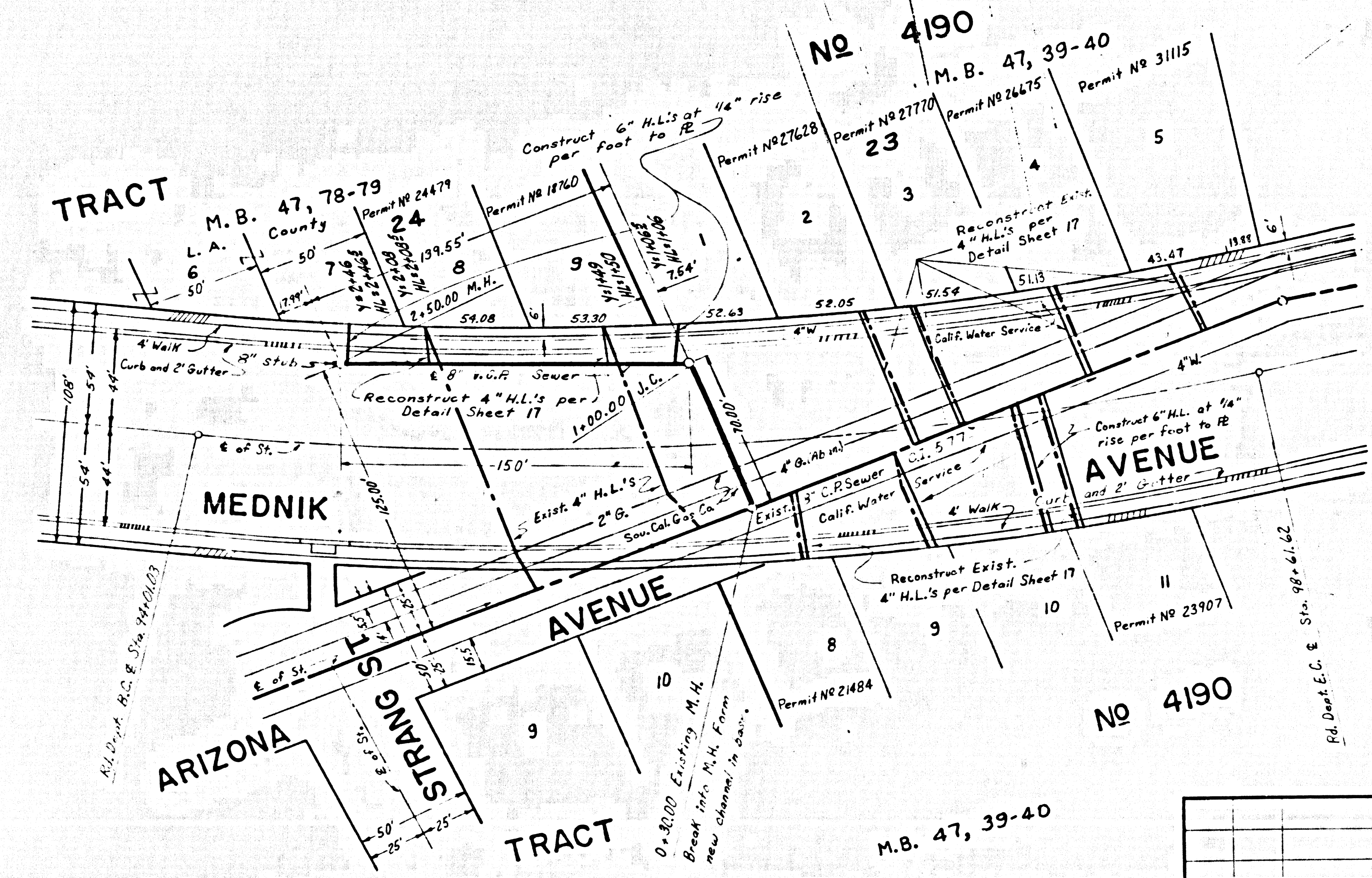
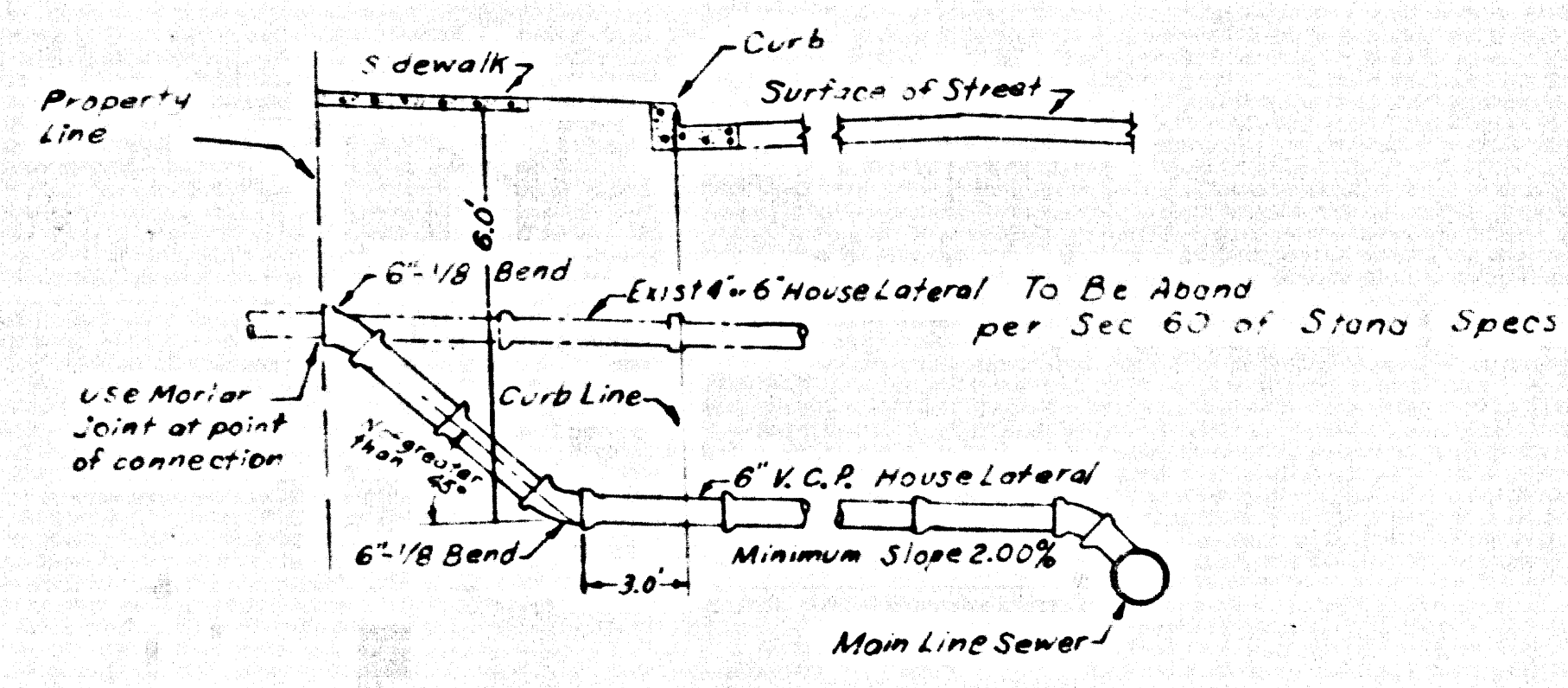
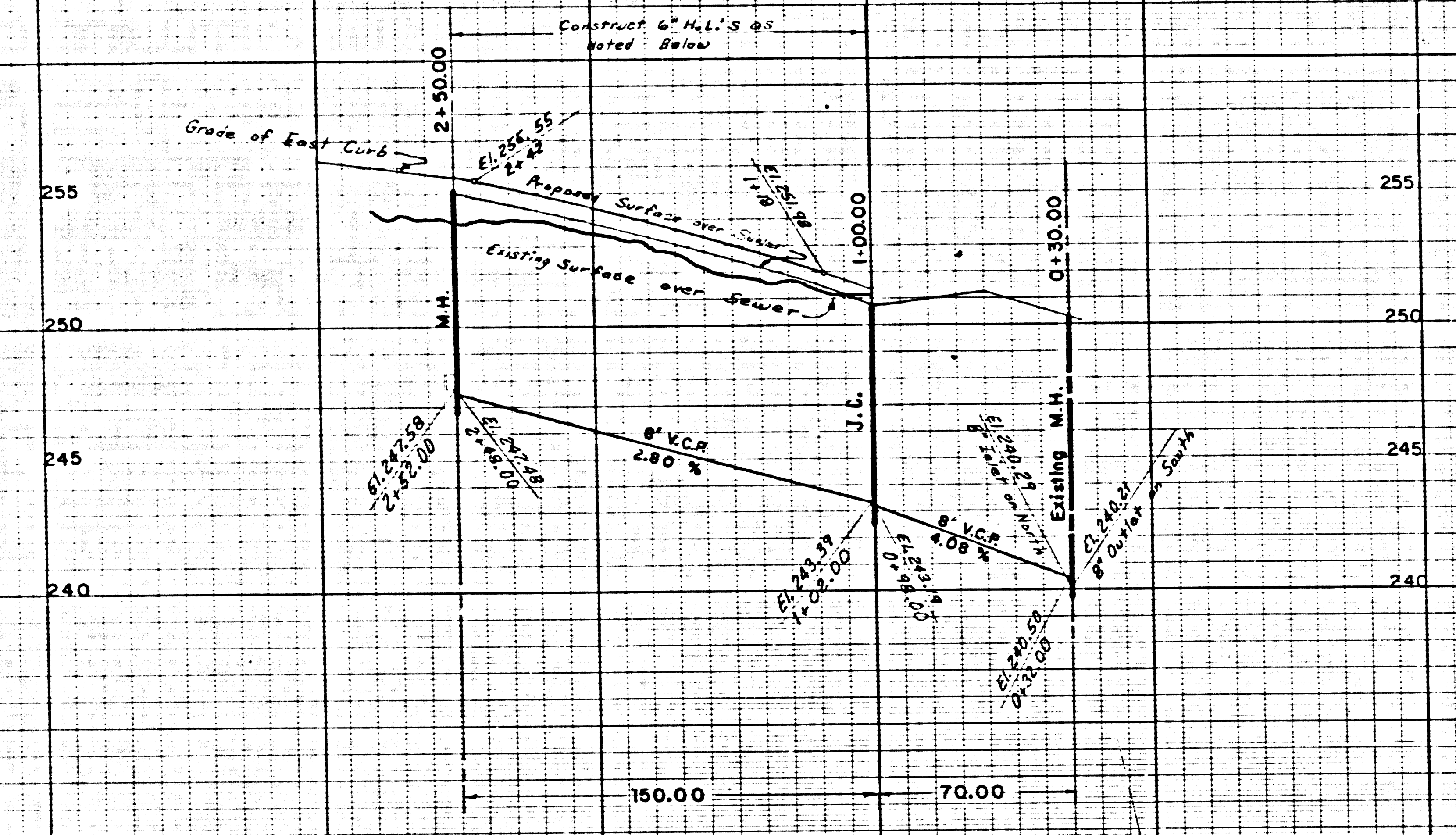
REVIEWED

39485

B.M. No. 2 Elev. 234.48 RDLB 474 Pg. 405
 L. & BN. S. Cb. Eagle St. 15' ± S. & 185' ± E. & Kern Ave. opp. PPMkd. "B.M." Rivera (60)

PROFILE SCALE
 HORIZ 1" = 40'
 VERT 1" = 4'

NO CHARGE FOR CONNECTIONS



PROJECT ENGINEER
 CHECKER
 DESIGNER
 REFERENCED

LOS ANGELES COUNTY ROAD DEPARTMENT	
HIGHWAY DIVISION	JOB NAME LIMITS
DATE BY	JOB NO.
REVISIONS	SCALE HORIZ. 1" = 40' VERT. 1" = 4'
SHEET 17 OF 18 SHTS. DWG. NO.	

Trim Line

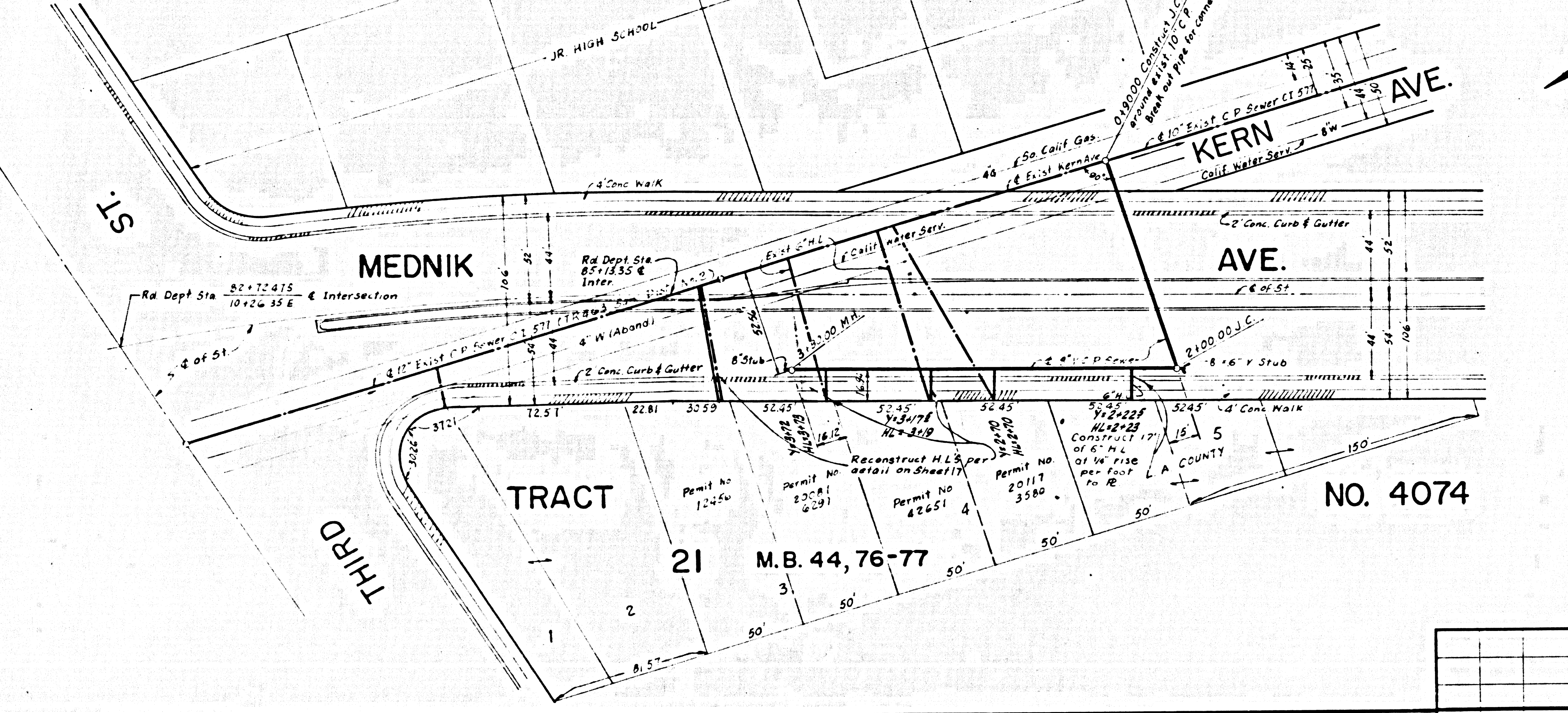
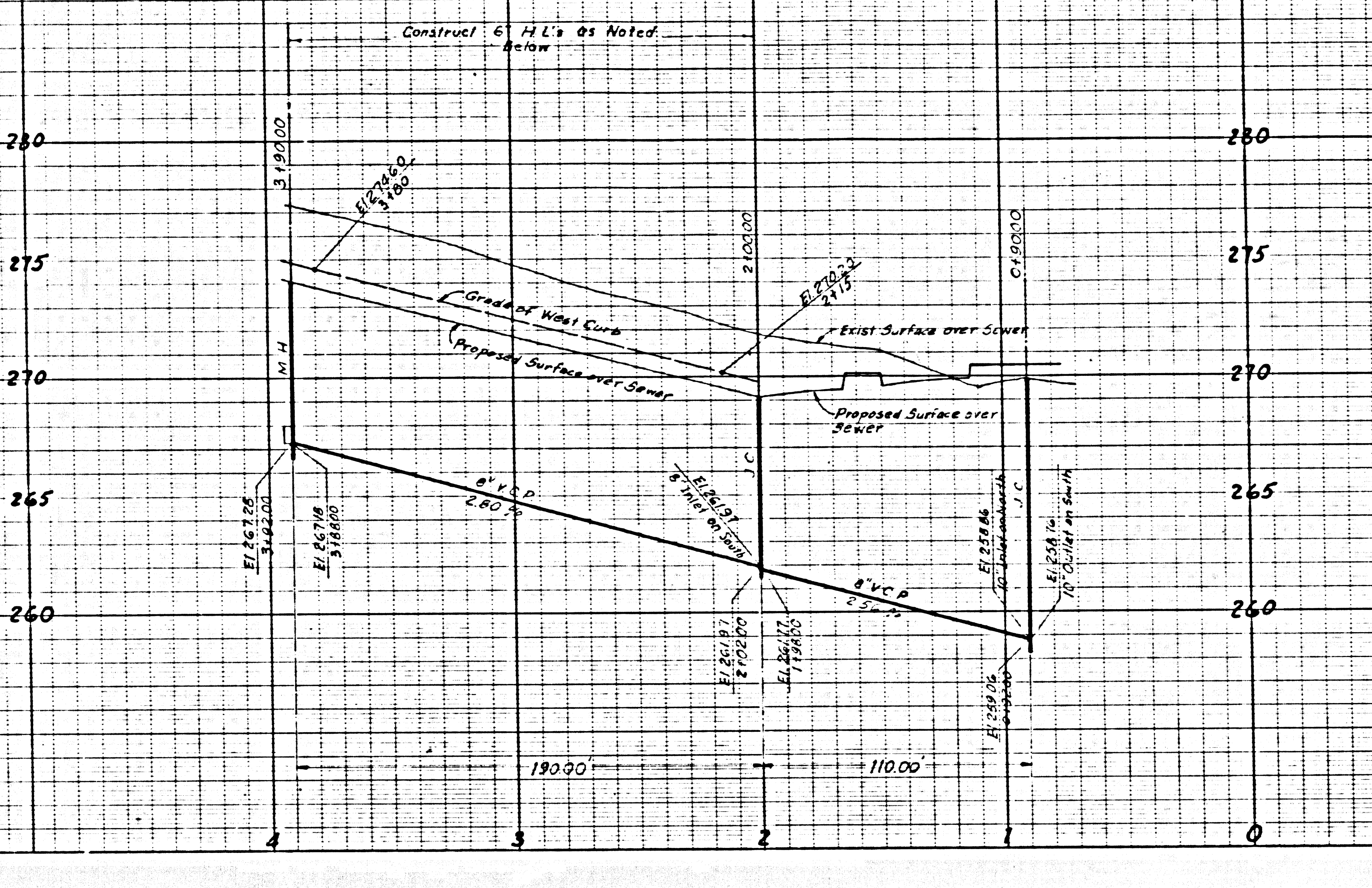
REVIEWED _____
DESIGN _____ SECTION _____ DATE _____

39484

B.M. NO. 2 EL. 281.888 RDLB 474 PG. 211
MEDNIK AVE. & THIRD ST. N.W. COR.
CO. ENGR. TAG 48' WEST B.C.R.

PROFILE SCALE
HORIZ. 1" = 40'
VERT. 1" = 4'

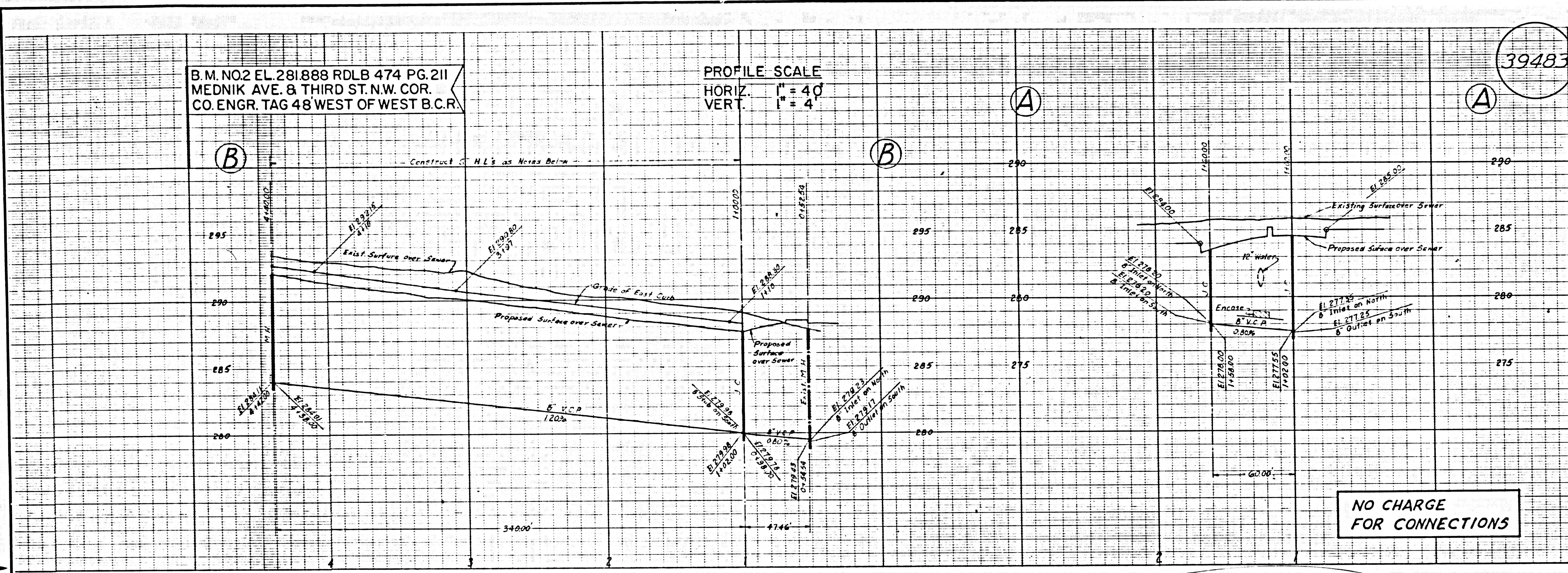
NO CHARGE
FOR CONNECTIONS



PROJECT ENGINEER
DESIGNER
CHECKER
REFERENCES

LOS ANGELES COUNTY ROAD DEPARTMENT		JOB NAME		SHEET 16 OF 34 SHTS.
HIGHWAY		LIMITS		
DIVISION		JOB NO.		SCALE HORIZ. 1" = 40' VERT. 1" = 4'
DATE BY		REVISIONS		

Trim Line



B.M. NO.2 EL. 281.888 RDLB 474 PG. 211
 MEDNIK AVE. & THIRD ST. N.W. COR.
 CO. ENGR. TAG 48 WEST OF WEST B.C.R.

PROFILE SCALE
 HORIZ. 1" = 40'
 VERT. 1" = 4'

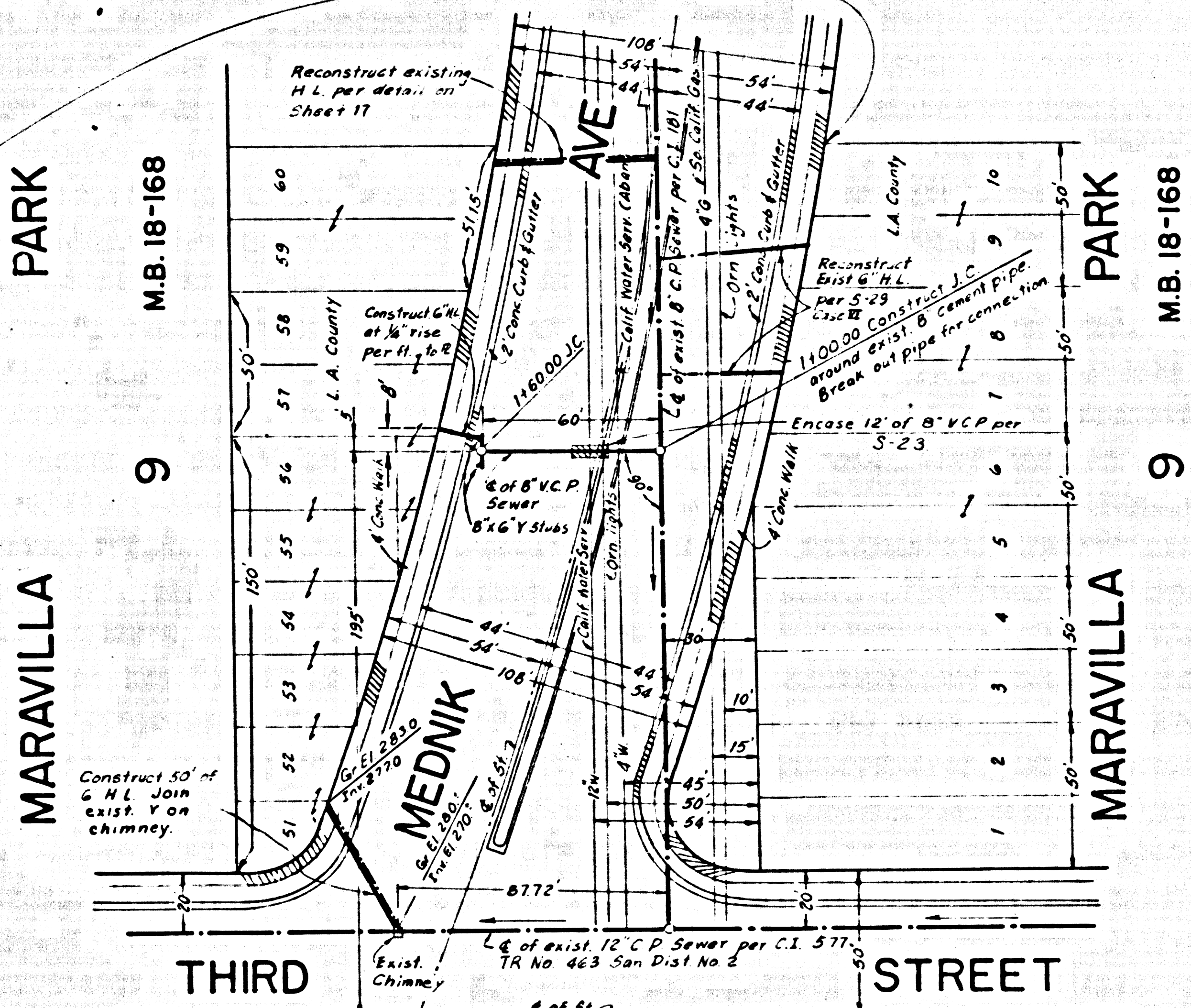
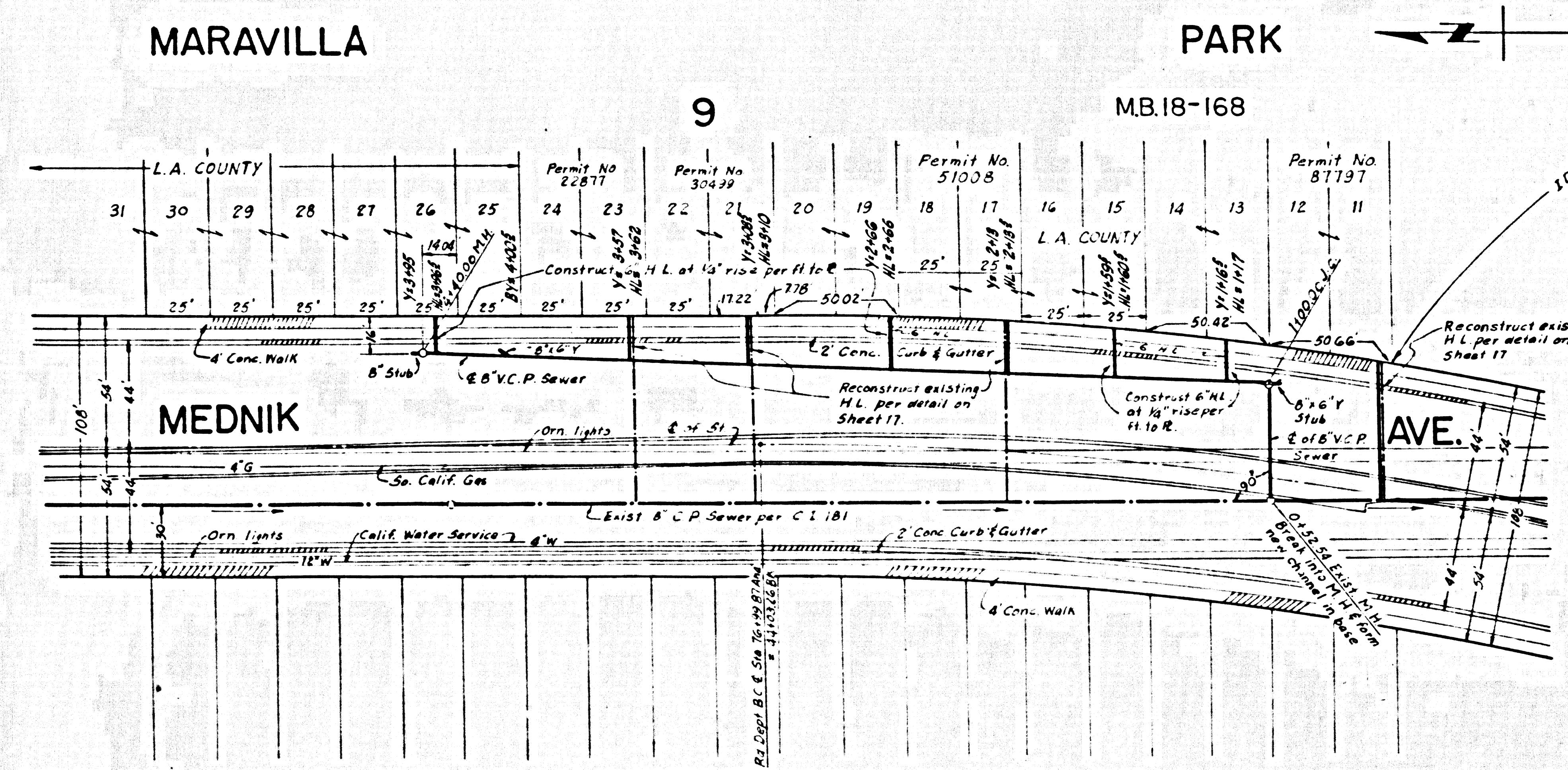
39483

NO CHARGE
 FOR CONNECTIONS

REVIEWED
 DESIGN SECTION ABC DATE
 P.C. 7808
 J.N. 0778.14

GENERAL SEWER NOTES

- Sanitary sewers shall be constructed according to Standard Specifications dated May 25, 1962, as revised, and Standard Plans, on file in the Office of the County Engineer and shall be prosecuted only in the presence of the County Engineer.
- For legend see Standard Plan S-1.
- Use extra strength vitrified clay pipe.
- Use mechanical compression joints for all vitrified clay pipe sewers per Sections 36, 48, and 49 of Standard Sewer Specifications.
- All structures shall be either brick manholes per S-3 or precast concrete manholes per S-5 or S-6, except as noted.
- Use standard manhole frames and covers per Standard Plan S-15.
- Use formula No. 2 Section 54 of Standard Sewer Specifications, to compute allowable leakage.
- Surface trenches within paved area of streets as noted on Los Angeles Co. Road Dept. road plans.
- Abandoned portions of house laterals shall be sealed per Section 60 of Standard Sewer Specifications.
- The Contractor shall notify the Construction Division by telephone, 629-4747 Ext. 81551, at least 24 hours before starting any work under this project.
- No revisions shall be made in these plans without the approval of the County Engineer.
- Existing service shall be maintained at all times.
- Approval of the sewer plans for this project by the County of Los Angeles does not constitute a representation as to the accuracy of the location of, or the existence or non-existence of any underground utility pipe or structure within the limits of this project.
- All state and local trench safety orders will be rigidly enforced.
- Construction of the sewer and appurtenances shall comply with Standard Plans Nos. S-2, S-15, S-17, S-26, S-30.



CASH CONTRACT
 NO. 41195
 PROFILE, GRADE, AND ALIGNMENT OF
 SANITARY SEWERS
 TO BE CONSTRUCTED IN
 MEDNIK AVENUE

COUNTY OF LOS ANGELES
 JOHN A. LAMBIE COUNTY ENGINEER
 SUBMITTED BY: *R. J. [Signature]* APPROVED: *Richard M. [Signature]*
 REG. C.E. NO. 4330 ASST. DIV. ENGINEER
 SANITATION DIVISION
 APPROVED JOHN D. PARKHURST
 CHIEF ENGINEER COUNTY SAN. DIST. NO. 2
 BY: *[Signature]*
 OFFICE ENGINEER

REFERENCE	DESIGNED: Hu, Sims	RECORD PLANS:
WS 36	TRACED: Hu, Sims	A. Youngdale
RFB 474	CHECKED: Tramm	
RDLB 474	INSPECTOR:	N. Smortzich

LOS ANGELES COUNTY ROAD DEPARTMENT	
HIGHWAY	
DIVISION	JOB NAME
LIMITS	LIMITS
DATE BY	REVISIONS
SCALE HORIZ. 1" = 40'	JOB NO.
SCALE VERT. 1" = 4'	DWG. NO.
	SHEET 15 OF 5HTS.

NO CONNECTIONS FOR THE DISPOSAL OF INDUSTRIAL WASTES SHALL BE MADE TO SEWERS SHOWN ON THESE DRAWINGS WITHOUT WRITTEN PERMISSION FROM THE CHIEF ENGINEER AND GENERAL MANAGER OF THE COUNTY SANITATION DISTRICTS.