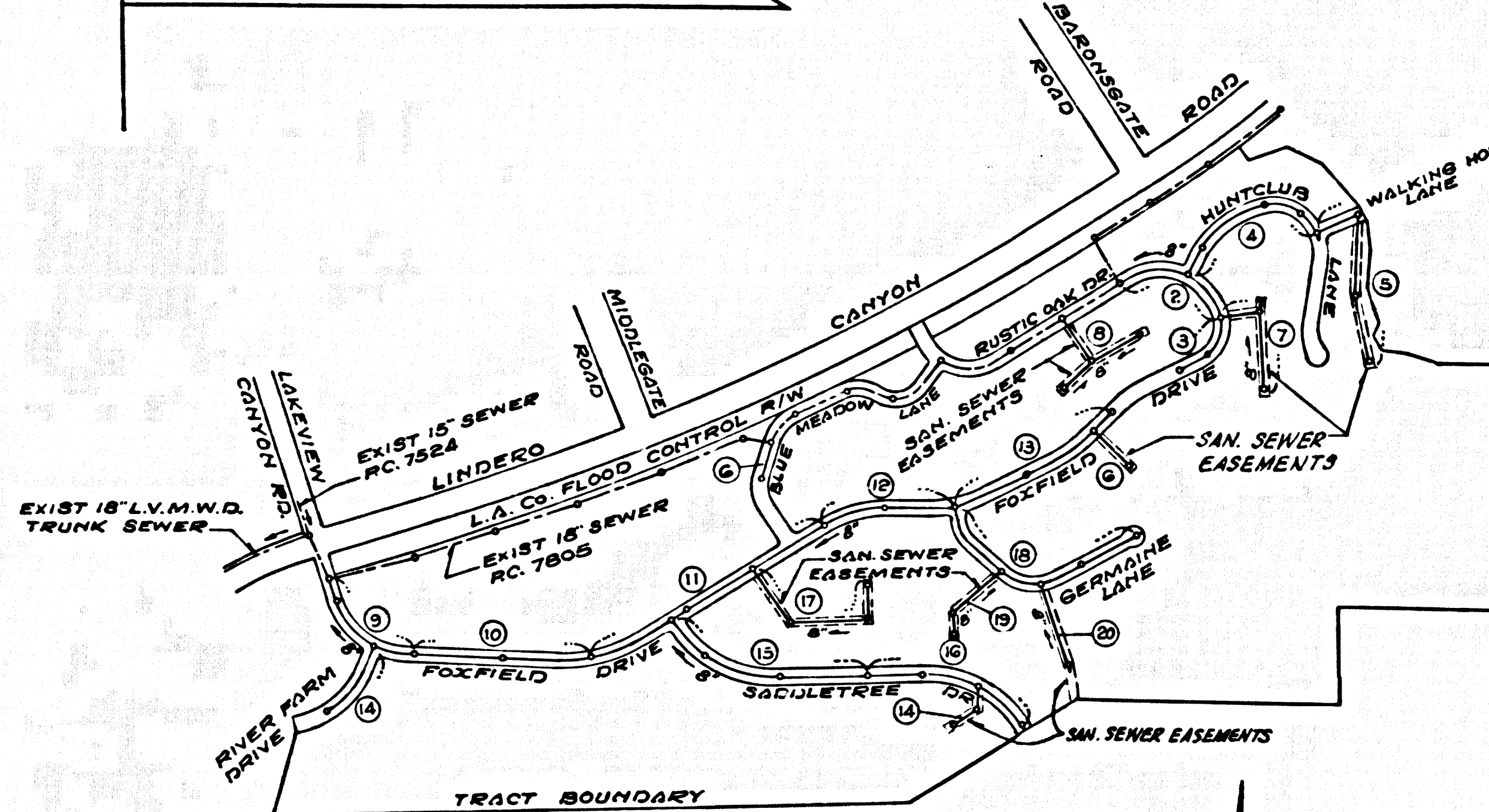


B.M. SY. 5638 ELEV. 360.472
 8" CP CONC. 10" DIA. @
 VENTURA BLVD. @ E.C. 2.4 MI. E
 W. CORNELL ROAD.
 MALIBU QUAD. 1960



INDEX MAP
 TRACT No 26500
 R.C. 7810

NOTE
 FIGURES IN CIRCLES INDICATE
 PAGE NUMBERS

THE ACCURACY OF THE LOCATION OF OR THE EXISTENCE OR NON-EXISTENCE OF ANY UTILITY PIPE OR STRUCTURE WITHIN THE LIMITS OF THIS PROJECT DOES NOT CONSTITUTE RESPONSIBILITY BY THE ENGINEER.

TESTING PER LAS VIRGENES MUNICIPAL WATER DISTRICT

- INFILTRATION AND LEAKAGE TEST**
 METHOD USED FOR TESTING SHALL BE THE SAME AS LOS ANGELES COUNTY EXCEPT THE FORMULA TO BE USED IS AS FOLLOWS:
 $Q = 55 \text{ GALLONS / MINUTE / INCH OF DIAMETER / 1000 FEET}$
 $250 \text{ GALLONS / DAY / INCH OF DIAMETER / MILE}$
- MANHOLE LEAKAGE TEST**
 AT THE DISCRETION OF THE DISTRICTS REPRESENTATIVE ONE MANHOLE OUT OF EVERY TEN MANHOLES AND A MINIMUM OF TWO WILL BE FILLED WITH WATER AND AFTER THREE HOURS WILL BE CHECKED FOR LEAKAGE WITH NO DROP IN LEVEL. FOR EVERY MANHOLE NOT PASSING TESTS THREE HOURS WILL BE TESTED AT THE DISCRETION OF THE DISTRICTS REPRESENTATIVE.
- AIR TESTING**
 WHERE THE DIFFERENCE IN ELEVATION BETWEEN THE INVERT OF THE UPPER STRUCTURE AND THE INVERT OF THE LOWER STRUCTURE IS MORE THAN SIX (6) INCHES AIR TEST WILL BE MADE.
 THE TIME TAKEN TO LOSE ONE (1) POUND PER SQUARE INCH GAUGE PRESSURE FROM TRENCH (S) SHOULD BE AS FOLLOWS:
 MAIN PIPE DIAMETER MINIMUM TIME LOSS
 6" - 12" 1 MINUTE
 12" - 24" 2 MINUTES
 24" - 36" 3 MINUTES
 36" - 48" 4 MINUTES

IF THE TIME IS LESS THAN LISTED IN THE TABLE ABOVE THE CONTRACTOR SHALL MAKE SUCH REPAIRS AS ARE NECESSARY TO ELIMINATE EXCESSIVE LEAKAGE.

NOTE:
 LOTS 111-124 INCL AND LOTS 145-155 INCL ARE SEPARATED BY SEWERS TO BE CONSTRUCTED UNDER R.C. 7805.

**DOUBLE SCALE
 CALABASAS BLDG. DIST. NO. 9.1**

- PROFILE, ALIGNMENT AND GRADE OF
SANITARY SEWERS PAGE 1
 TO BE CONSTRUCTED IN
- TRACT No. 26500
 PRIVATE CONTRACT NO. 78'0
 W.S. 93
 10 SHEETS, 22 PAGES
 SCALE: VERT. 1" = 8' HORIZ. 1" = 40'
 DATE: JANUARY, 1967
 39840
- PREPARED IN THE OFFICES OF
 MCINTIRE AND QUIROS, INC.
 670 MONTEREY PASS ROAD
 MONTEREY PARK, CALIF.
 TEL. 283-7661, 289-5111
- APPROVED BY: *George J. Queros*
 REG. C. E. NO. 15810
 FOR LEGEND SEE PLAN NO. S-1
- NOTE:
 GRADES TO WHICH THIS IMPROVEMENT IS TO BE CONSTRUCTED ARE SHOWN ON PLANS AND PROFILES. GRADE POINTS FOR TOP OF CURB, CENTER LINE OF STREETS, OR CENTER LINE OF ALLEYS ARE SHOWN BY CIRCLES ON PROFILES. AT ALL POINTS BETWEEN DESIGNATED POINTS THE GRADE SHALL BE ESTABLISHED SO AS TO CONFORM TO A STRAIGHT LINE DRAWN BETWEEN SAID DESIGNATED POINTS. ELEVATIONS ARE IN FEET ABOVE U.S.C. & G.S. SEA LEVEL DATUM OF 1929.
- THIS DRAWING AND THE DATA HEREON ARE HEREBY MADE A PART OF THE SPECIFICATIONS. BEFORE WORK CAN BE STARTED, THE CONTRACTOR MUST OBTAIN A PERMIT TO EXCAVATE IN COUNTY STREETS FROM THE L.A. COUNTY ROAD DEPT., DISTRICT OFFICE NO. 3, 400 WEST SECOND STREET, LOS ANGELES, CALIF. DISTRICT OFFICE, SUFFICIENT TO COVER THE COST OF CONSTRUCTION INSPECTION AND RECORD PLANS.
- APPROVAL OF THIS PLAN BY THE COUNTY OF LOS ANGELES DOES NOT CONSTITUTE A REPRESENTATION AS TO THE ACCURACY OF THE LOCATION OF OR THE EXISTENCE OR NON-EXISTENCE OF ANY UNDERGROUND UTILITY PIPE, OR STRUCTURE WITHIN THE LIMITS OF THIS PROJECT. THIS NOTE APPLIES TO ALL PAGES.
- IF WORK IS TO BE DONE IN A STATE HIGHWAY, A PERMIT MUST BE OBTAINED FROM THE STATE OF CALIFORNIA, DIVISION OF HIGHWAYS, 126 SOUTH SPRING STREET, LOS ANGELES, CALIFORNIA.
- PROVIDE STAKES ON THE PROPERTY LINE OR PROPERTY LINES PRODUCED AT RIGHT ANGLES TO THE SEWER LINE AT THE CENTER LINE OF EACH MANHOLE.
 - NO REPRESENTATIVE OF THE COUNTY ENGINEER WILL SURVEY OR LAY OUT ANY PORTION OF THE WORK.
 - THE PRIVATE ENGINEER SHALL FURNISH THE COUNTY ENGINEER WITH GRADE SHEETS AND STATIONING FOR ALL HOUSE LATERALS AND 12" BRANCHES AND SHALL PROVIDE STAKES FOR THEM AT THEIR PROPER LOCATIONS WITH STATIONING PLAINLY MARKED. ALL HOUSE LATERALS SHALL BE CONSTRUCTED IN A STRAIGHT ALIGNMENT AT RIGHT ANGLES FROM THE MAIN LINE SEWER EXCEPT AS SHOWN ON THE PLANS. HOUSE LATERALS FROM CHIMNEYS SHALL NOT HAVE AN ANGLE OF LESS THAN 45° WITH THE MAIN LINE SEWER. ANY CHANGE IN ALIGNMENT SHALL BE REQUESTED IN WRITING BY THE PRIVATE ENGINEER.
 - THE PRIVATE ENGINEER SHALL FURNISH THE HOUSE LATERAL DEPTH AT THE PROPERTY LINE BELOW THE TOP OF CURB ELEVATION FOR EACH HOUSE LATERAL ON THE GRADE SHEET.
 - NO REVISIONS SHALL BE MADE IN THESE PLANS WITHOUT THE APPROVAL OF THE COUNTY ENGINEER.
 - THE CONTRACTOR SHALL NOTIFY THE CONSTRUCTION DIVISION BY TELEPHONE, MADISON 9-2747, EXT. 81331, AT LEAST TWENTY-FOUR HOURS BEFORE STARTING ANY WORK UNDER THIS CONTRACT.
 - ALL STRUCTURES SHALL BE EITHER BRICK MANHOLES PER S-3 OR PRECAST CONCRETE MANHOLES PER S-5 OR S-9, EXCEPT AS NOTED.
 - USE STANDARD MANHOLE FRAMES AND COVERS, S-15, EXCEPT AS NOTED.
 - MANHOLE TOPS IN UNIMPROVED RIGHTS-OF-WAY TO BE SIX INCHES ABOVE FINISHED GRADE.
 - USE EXTRA STRENGTH PIPE. ALL PIPE IS STANDARD DEPTH EXCEPT AS NOTED.
 - USE MECHANICAL COMPRESSION JOINTS FOR ALL V.C.P. JOINTS PER SPEC. SECS. 34, 48 & 49.
 - IF A POWER POLE IS WITHIN THREE FEET OF THE SEWER, THE SEWER SHALL BE ENCASED, PER S-23, TWO FEET ON EACH SIDE FROM THE POINT OF INTERFERENCE.
 - IF DURING THE COURSE OF CONSTRUCTION IT IS DETERMINED THAT THERE IS LESS THAN FOUR FEET OF COVER OVER THE TOP OF A MAIN LINE OR HOUSE LATERAL V.C.P. SEWER WHICH IS NOT INDICATED ON THE PLANS, THE PIPE SHALL BE ENCASED PER S-23, UNLESS OTHERWISE APPROVED BY THE COUNTY ENGINEER.
 - HOUSE LATERALS TO BE CONSTRUCTED WITH INVERTS AT PROPERTY LINE 8" BELOW CURB OR LINE OF PAVEMENT UNLESS OTHERWISE SPECIFIED IN THE PROFILE OR BY DEPTH AT END OF LATERAL ON PLAN.
 - REINFORCE ALL TRENCHES WITHIN PAVED AREAS TO MEET L.A. COUNTY ROAD DEPT. OR CALIFORNIA STATE HIGHWAY REQUIREMENTS IN ACCORDANCE WITH PERMITS.
 - FOR ALLOWABLE LEAKAGE TEST USE FORMULA NO. 3, SPEC. S. 34.
 - ALL STATE AND LOCAL TRENCH SAFETY ORDERS WILL BE STRICTLY ENFORCED.
 - SPECIAL BACKFILL IN DESIGNATED AREAS
 (A) BRICKFILL TRENCH AND REPLACE OTHER EARTH REMOVED SO AS TO ACHIEVE THE NATURAL OR FINISH GRADES AND SLOPES SHOWN ON THE GRADING PLAN APPROVED FOR THIS TRACT BY THE BUILDING AND SAFETY DIVISION
 (B) ALL BACKFILL AND EARTH REPLACED SHALL BE COMPACTED TO A MINIMUM OF 90% OF MAXIMUM DENSITY PER A.S.T.M. STANDARD METHOD OF TEST D-1557-B BY MOISTURE, ACCEPTABLE CERTIFICATION OF SUCH COMPACTNESS SHALL BE SUBMITTED TO THE CONSTRUCTION DIVISION.
 - STATION IN CIRCLE WITHIN LOT INDICATES HOUSE LATERAL OR WYE SHALL NOT BE CONSTRUCTED UPTREAM OF THAT STATION.
 - STATION IN SQUARE WITHIN LOT INDICATES HOUSE LATERAL OR WYE SHALL NOT BE CONSTRUCTED DOWNSTREAM OF THAT STATION.
 - NUMBERS IN CIRCLES APPROVED TO HOUSE LATERALS INDICATE DEPTH OF INVERT AT PROPERTY LINE BELOW CURB GRADE OR EDGE OF PAVEMENT

**COLLECT CHARGES
 AS INDICATED**
Howard J. Volinsky

PROFILE, ALIGNMENT AND GRADE OF
SANITARY SEWERS PAGE 1
 TO BE CONSTRUCTED IN

TRACT No. 26500
 PRIVATE CONTRACT NO. 78'0
 W.S. 93
 10 SHEETS, 22 PAGES
 SCALE: VERT. 1" = 8' HORIZ. 1" = 40'
 DATE: JANUARY, 1967
 39840

PREPARED IN THE OFFICES OF
 MCINTIRE AND QUIROS, INC.
 670 MONTEREY PASS ROAD
 MONTEREY PARK, CALIF.
 TEL. 283-7661, 289-5111

APPROVED BY: *George J. Queros*
 REG. C. E. NO. 15810
 FOR LEGEND SEE PLAN NO. S-1

NOTE:
 GRADES TO WHICH THIS IMPROVEMENT IS TO BE CONSTRUCTED ARE SHOWN ON PLANS AND PROFILES. GRADE POINTS FOR TOP OF CURB, CENTER LINE OF STREETS, OR CENTER LINE OF ALLEYS ARE SHOWN BY CIRCLES ON PROFILES. AT ALL POINTS BETWEEN DESIGNATED POINTS THE GRADE SHALL BE ESTABLISHED SO AS TO CONFORM TO A STRAIGHT LINE DRAWN BETWEEN SAID DESIGNATED POINTS. ELEVATIONS ARE IN FEET ABOVE U.S.C. & G.S. SEA LEVEL DATUM OF 1929.

THIS DRAWING AND THE DATA HEREON ARE HEREBY MADE A PART OF THE SPECIFICATIONS. BEFORE WORK CAN BE STARTED, THE CONTRACTOR MUST OBTAIN A PERMIT TO EXCAVATE IN COUNTY STREETS FROM THE L.A. COUNTY ROAD DEPT., DISTRICT OFFICE NO. 3, 400 WEST SECOND STREET, LOS ANGELES, CALIF. DISTRICT OFFICE, SUFFICIENT TO COVER THE COST OF CONSTRUCTION INSPECTION AND RECORD PLANS.

APPROVAL OF THIS PLAN BY THE COUNTY OF LOS ANGELES DOES NOT CONSTITUTE A REPRESENTATION AS TO THE ACCURACY OF THE LOCATION OF OR THE EXISTENCE OR NON-EXISTENCE OF ANY UNDERGROUND UTILITY PIPE, OR STRUCTURE WITHIN THE LIMITS OF THIS PROJECT. THIS NOTE APPLIES TO ALL PAGES.

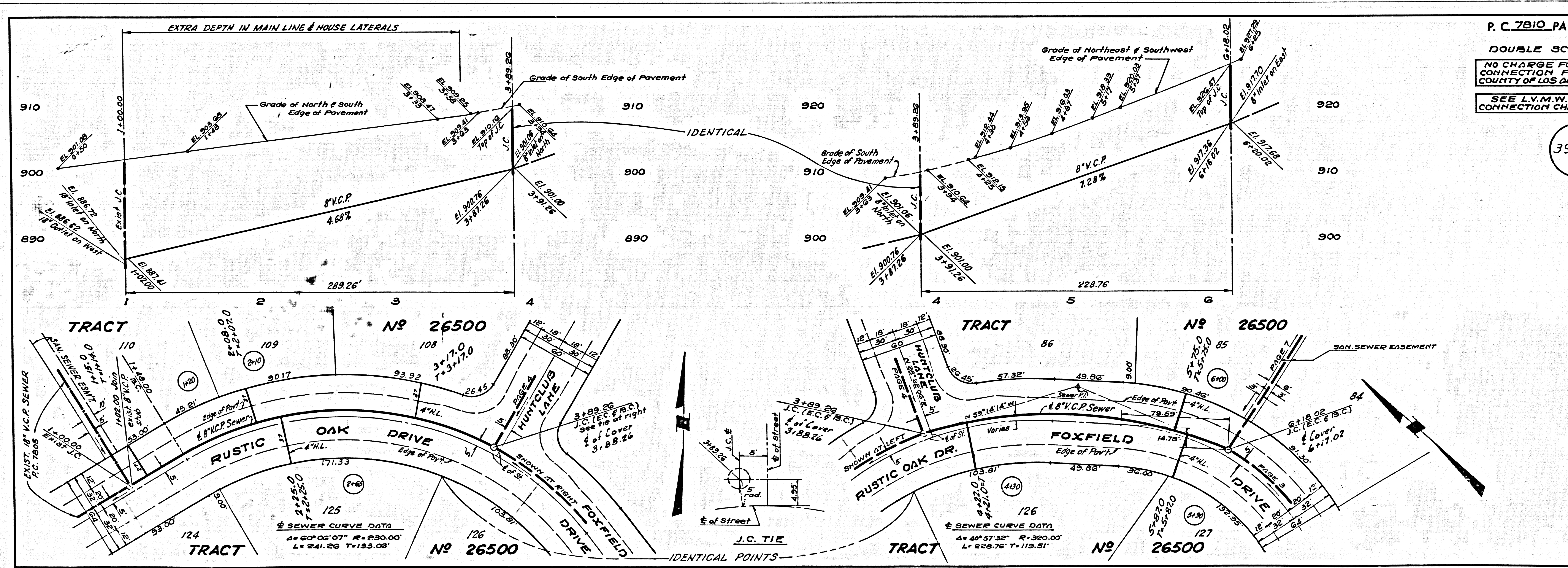
IF WORK IS TO BE DONE IN A STATE HIGHWAY, A PERMIT MUST BE OBTAINED FROM THE STATE OF CALIFORNIA, DIVISION OF HIGHWAYS, 126 SOUTH SPRING STREET, LOS ANGELES, CALIFORNIA.

COUNTY OF LOS ANGELES, CALIFORNIA
 JOHN A. LAMBLE, COUNTY ENGINEER
 LOS VIRGENES MUNICIPAL
 WATER DISTRICT
 APPROVED BY: *Richard M. Cron*
 ASSISTANT SANITATION ENGINEER
 APPROVED BY: *Howard J. Volinsky*
 GENERAL MGR. CHIEF ENGINEER

SUBMITTED BY: *Howard J. Volinsky*
 SPECIAL ENGINEER

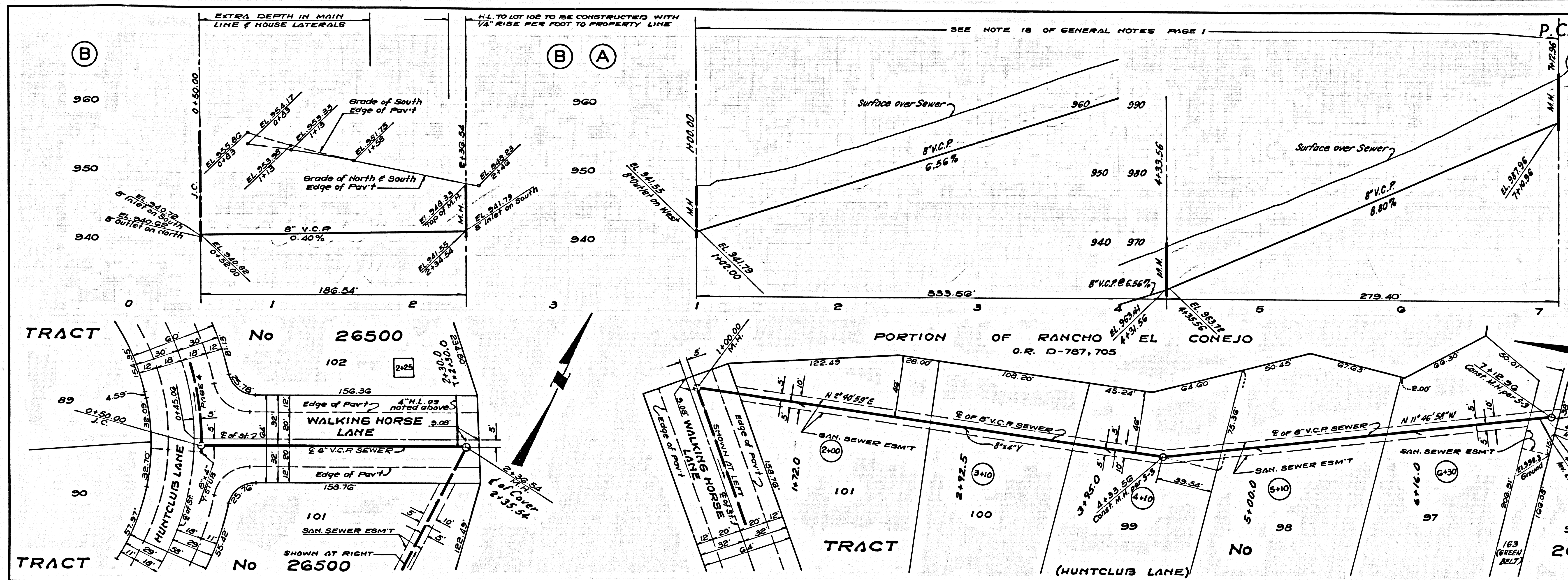
CHECKED BY: *Howard J. Volinsky*
 REG. C. E. NO. 10453

J.N. 0250.02

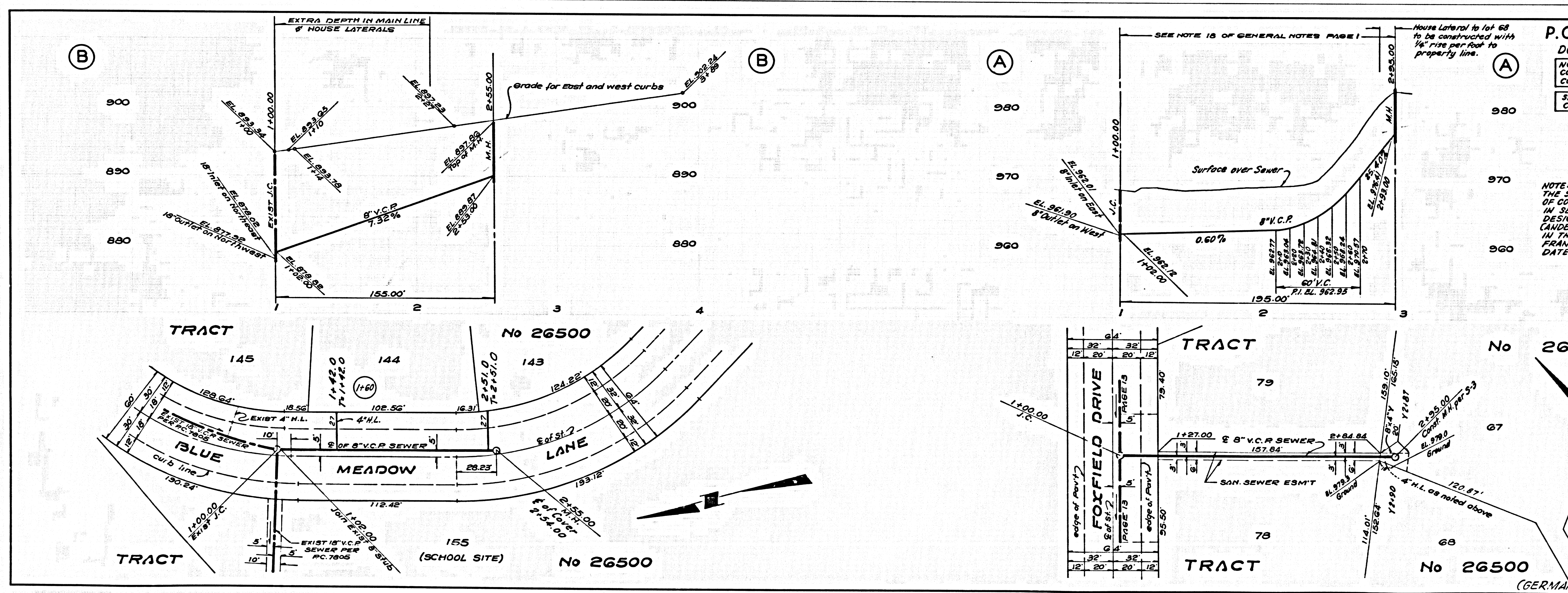


P.C. 7810 PAGE 2
DOUBLE SCALE
 NO CHARGE FOR
 CONNECTION FOR
 COUNTY OF LOS ANGELES
 SEE L.V.M.W.D. FOR
 CONNECTION CHARGES

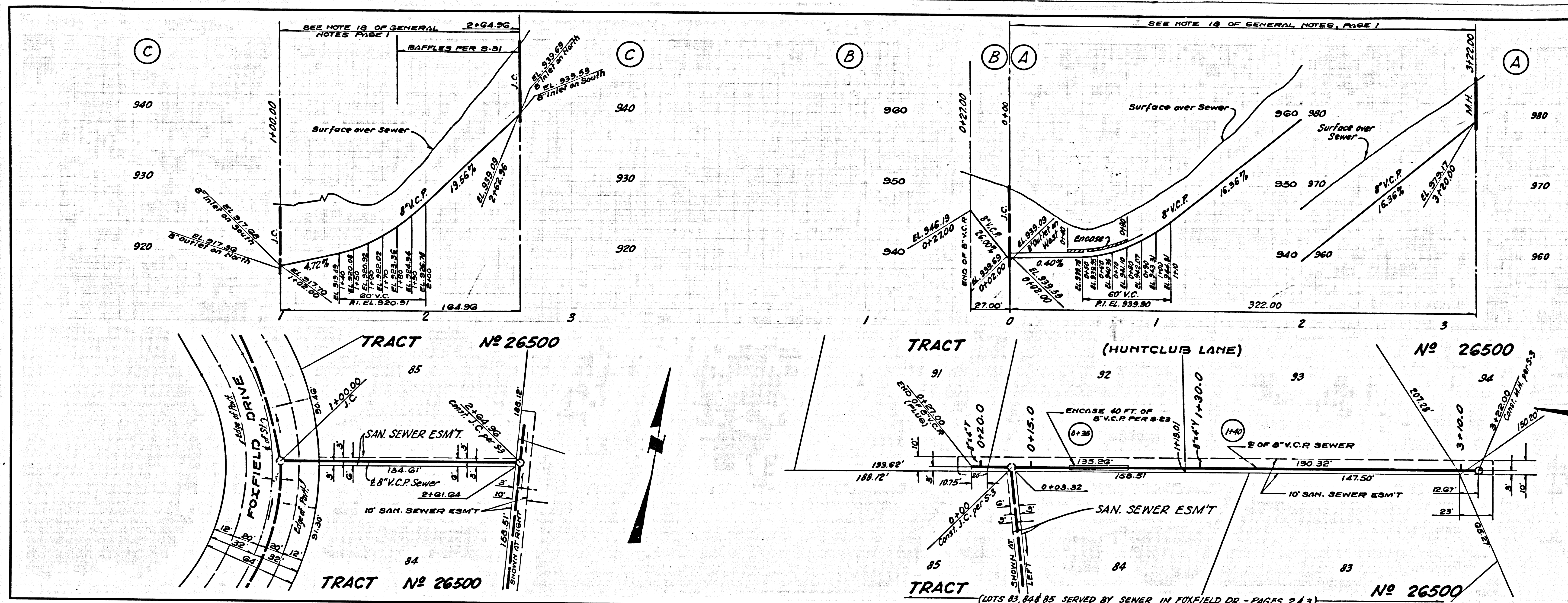
39841



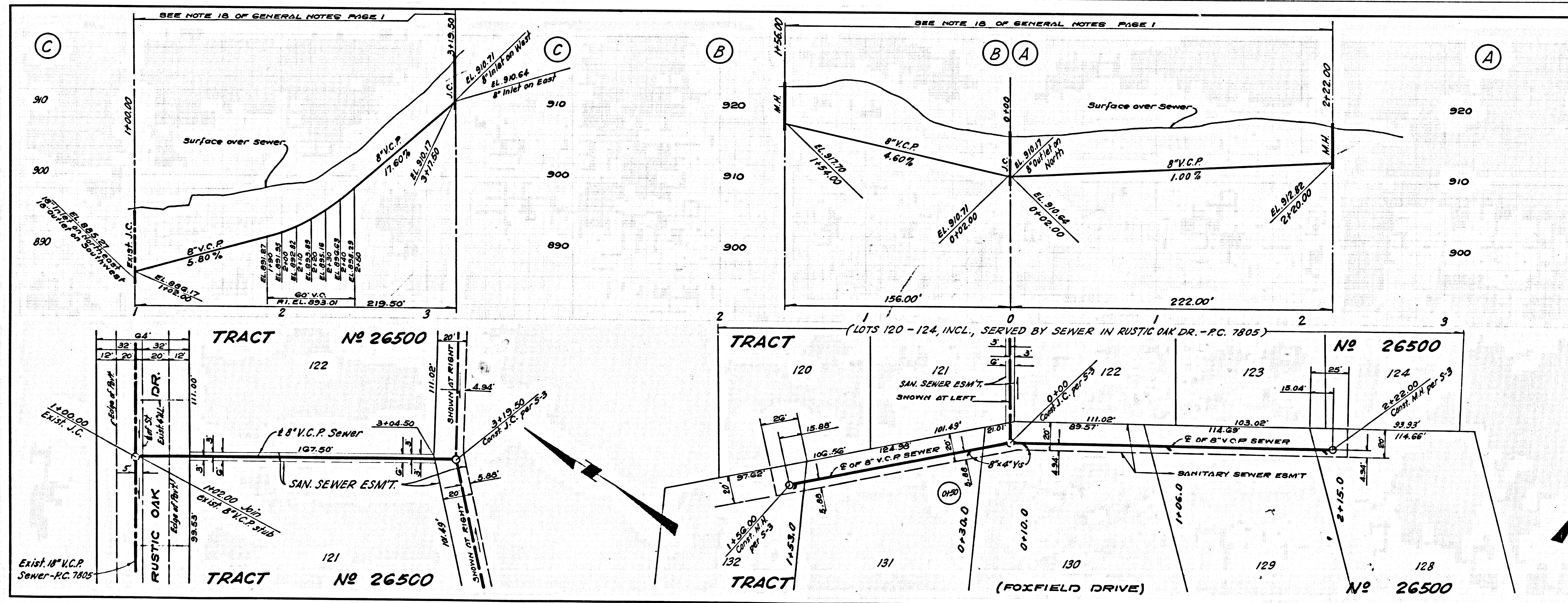
P.C. 7810 PAGE 5
DOUBLE SCALE
 NO CHARGE FOR CONNECTIONS FOR COUNTY OF LOS ANGELES
 SEE L.V.M.W.D. FOR CONNECTION CHARGES
 39844
 NOTE: THE SOIL UPSTREAM OF STA. 5+00 (2) IS DESIGNATED AS TERRACE DEPOSITS (SANDS, GRAVELS & BOULDERS) IN THE REPORT OF R.T. FRANKLIN AND ASSOC. DATED 1-9-66



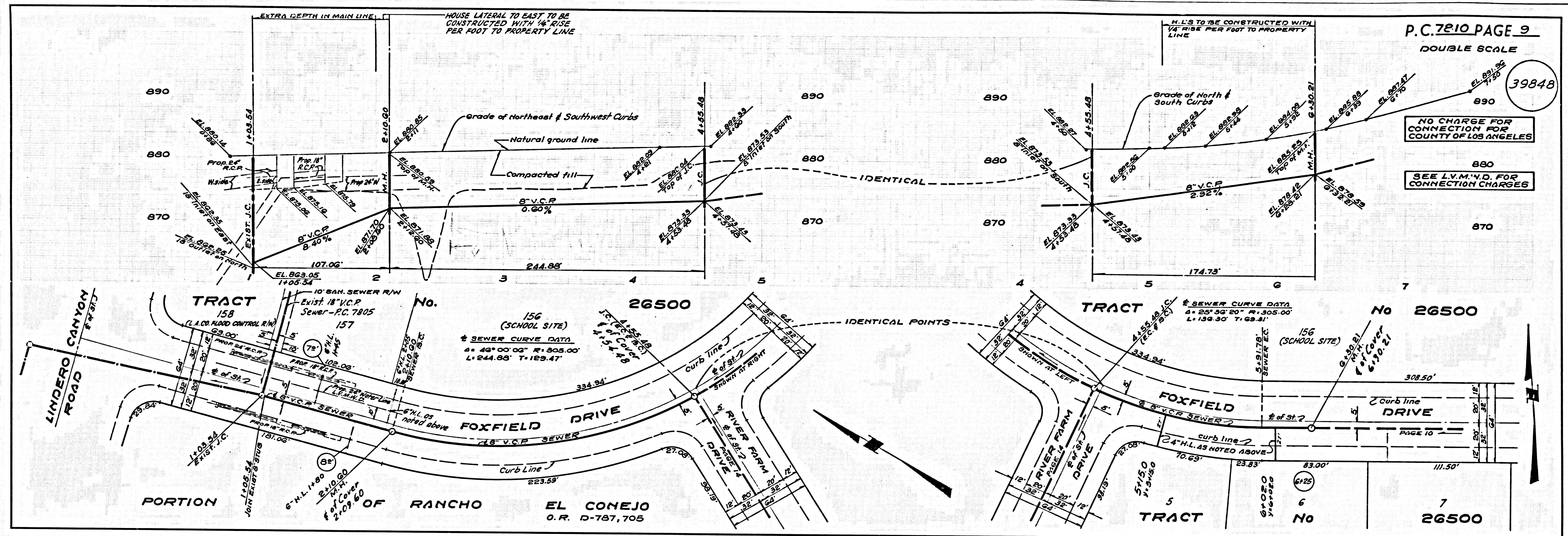
P.C. 7810 PAGE 6
DOUBLE SCALE
 NO CHARGE FOR CONNECTIONS FOR COUNTY OF LOS ANGELES
 SEE L.V.M.W.D. FOR CONNECTION CHARGES
 39845
 NOTE: THE SOIL WITHIN THE LIMITS OF CONSTRUCTION SHOWN IN SECTION 'A' ONLY IS DESIGNATED AS ROCK CAUSEWAY PYROCLASTICS IN THE REPORT OF R.T. FRANKLIN & ASSOC. DATED 1-6-66.



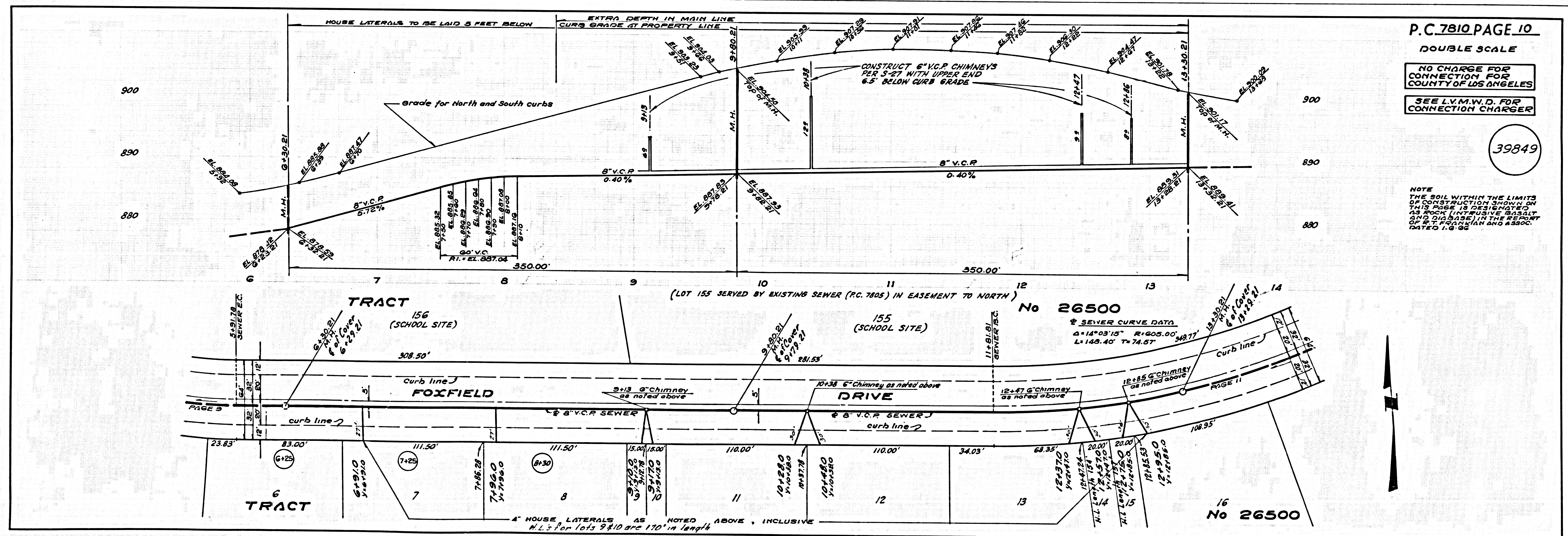
P.C. 7810 PAGE 7
 DOUBLE SCALE
 NO CHARGE FOR CONNECTION FOR COUNTY OF LOS ANGELES
 SEE L.V.M.W.D. FOR CONNECTION CHARGES



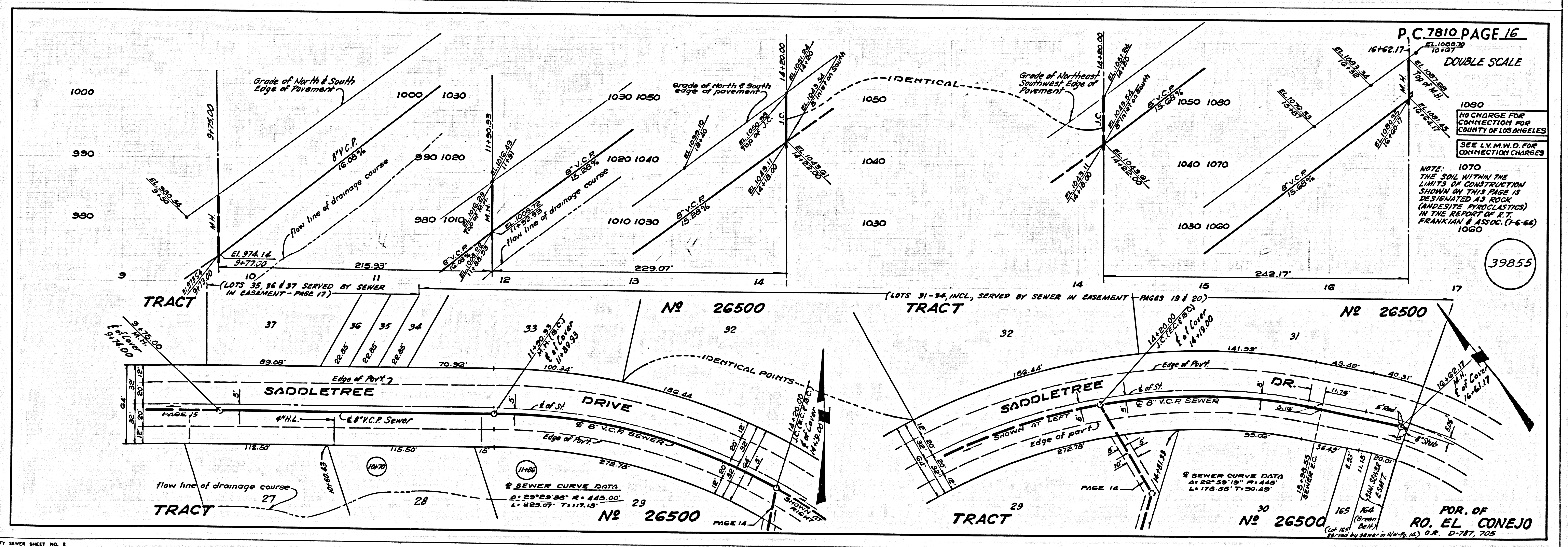
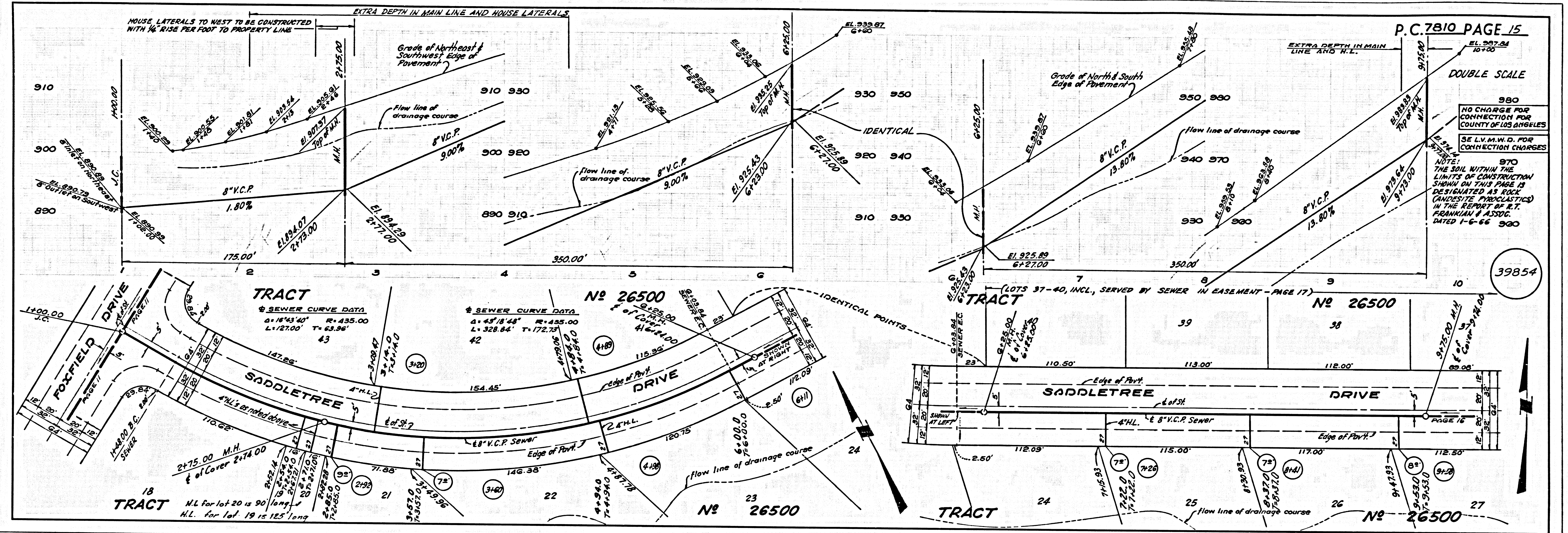
P.C. 7810 PAGE 8
 DOUBLE SCALE
 NO CHARGE FOR CONNECTION FOR COUNTY OF LOS ANGELES
 SEE L.V.M.W.D. FOR CONNECTION CHARGES

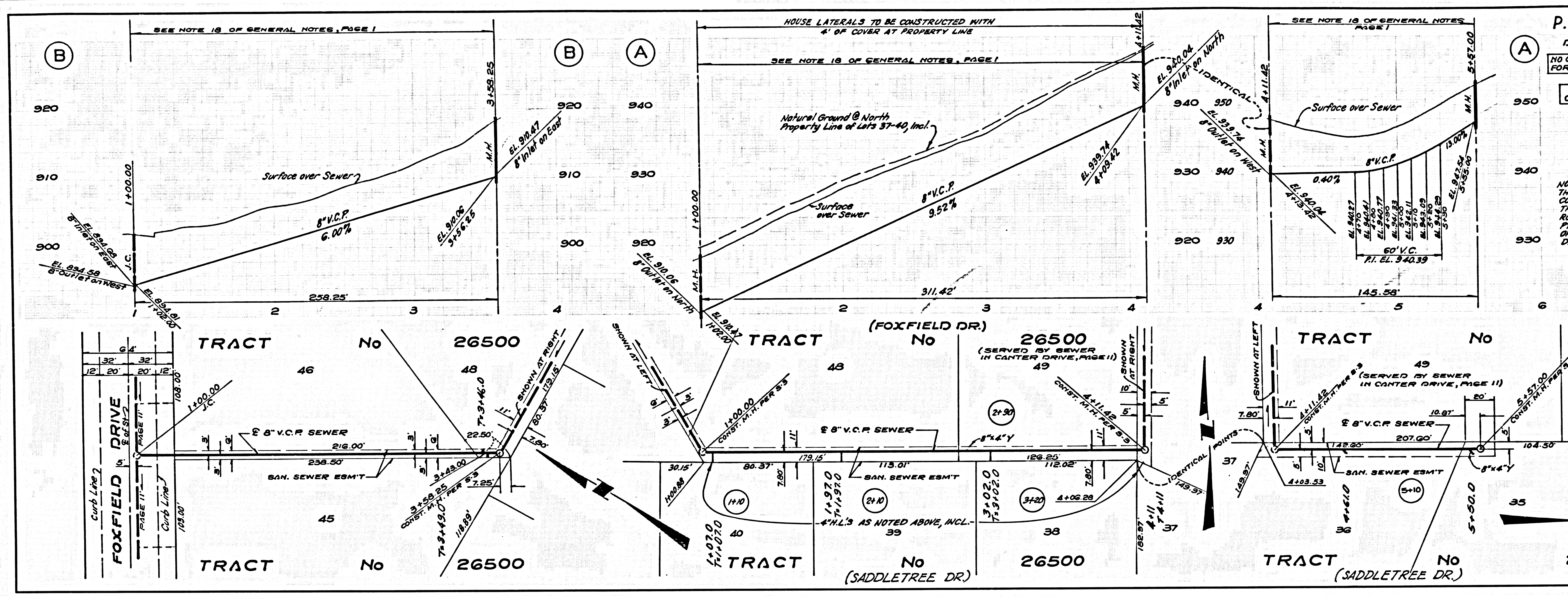


P.C. 7810 PAGE 9
DOUBLE SCALE
39848
NO CHARGE FOR CONNECTION FOR COUNTY OF LOS ANGELES
SEE L.V.M.W.D. FOR CONNECTION CHARGES



P.C. 7810 PAGE 10
DOUBLE SCALE
39849
NO CHARGE FOR CONNECTION FOR COUNTY OF LOS ANGELES
SEE L.V.M.W.D. FOR CONNECTION CHARGES
NOTE
THE SOIL WITHIN THE LIMITS OF CONSTRUCTION SHOWN IN THIS CASE IS DESIGNATED AS POCKET (INTENSIVE) BASTARD AND DIABASE IN THE REPORT OF SOIL INVESTIGATION AND ASSOC. DATED 1-6-56





P.C. 7810 PAGE 17

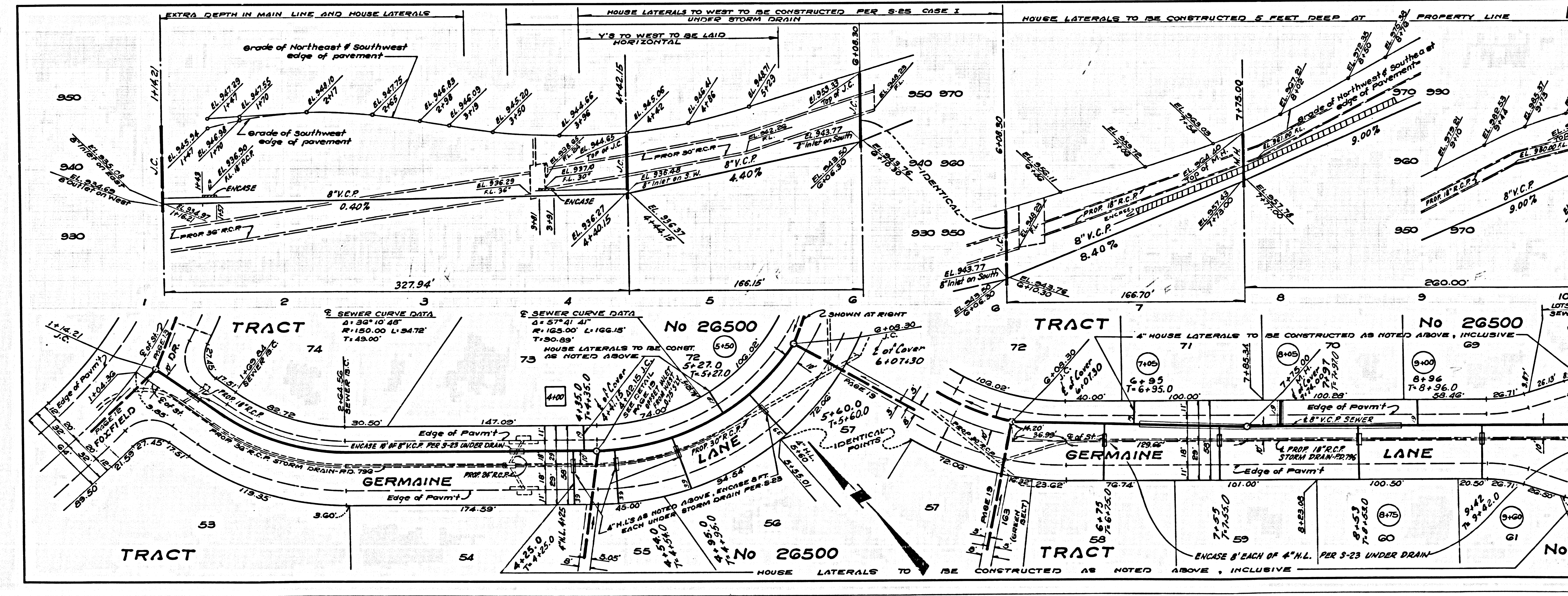
DOUBLE SCALE

NO CHARGE FOR CONNECTIONS FOR COUNTY OF LOS ANGELES

SEE L.V.M.W.D. FOR CONNECTION CHARGES

39856

NOTE: THE SOIL WITHIN THE LIMITS OF CONSTRUCTION SHOWN ON THIS PAGE IS DESIGNATED AS ROCK (HARD BASALT AND PYROCLASTICS) IN THE REPORT OF R. T. FRANKLIN & ASS'CS. DATED 1-6-66.



P.C. 7810 PAGE 18

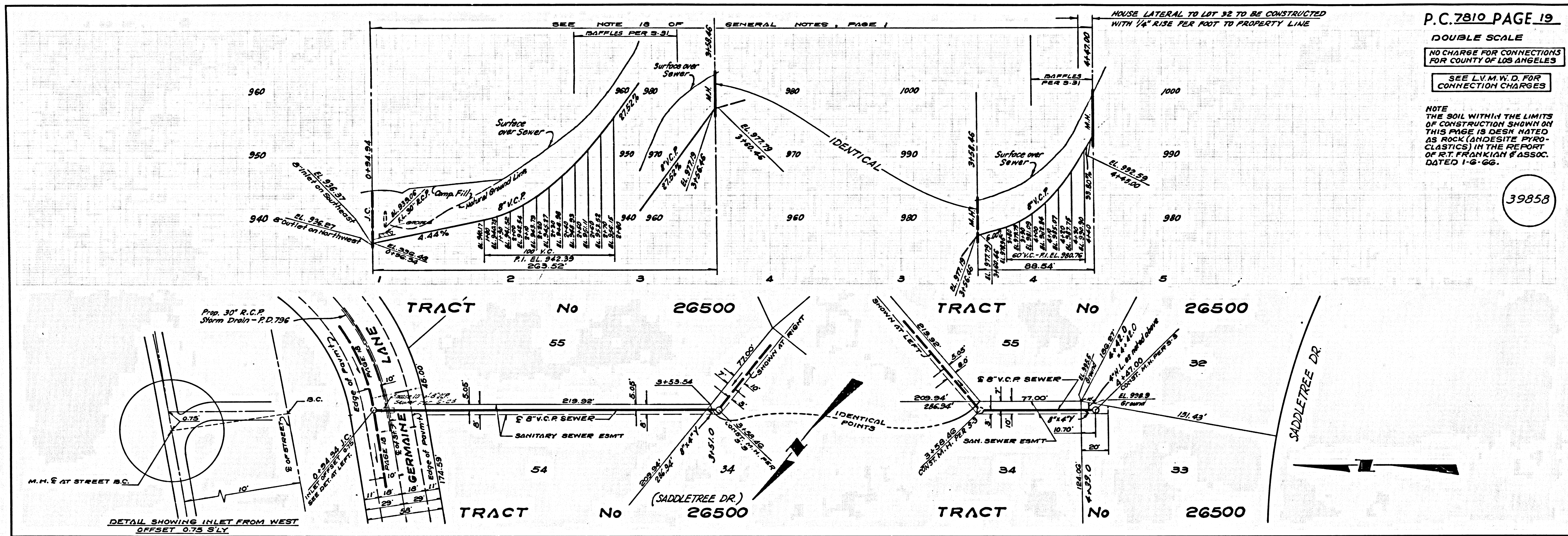
DOUBLE SCALE

NO CHARGE FOR CONNECTIONS FOR COUNTY OF LOS ANGELES

SEE L.V.M.W.D. FOR CONNECTION CHARGES

39857

NOTE: THE SOIL WITHIN THE LIMITS OF CONSTRUCTION SHOWN ON THIS PAGE IS DESIGNATED AS ROCK (HARD BASALT AND PYROCLASTICS) IN THE REPORT OF R. T. FRANKLIN & ASS'CS. DATED 1-6-66.

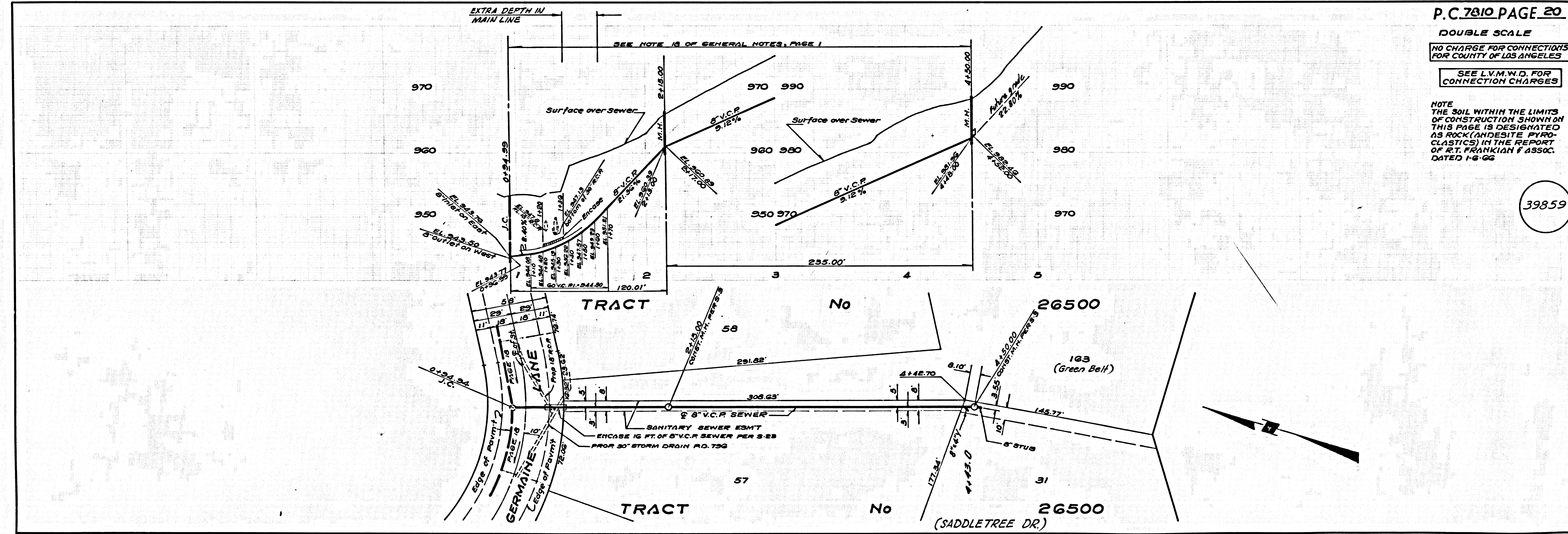


P.C. 7810 PAGE 19

DOUBLE SCALE
 NO CHARGE FOR CONNECTIONS FOR COUNTY OF LOS ANGELES
 SEE L.V.M.W.D. FOR CONNECTION CHARGES

NOTE THE SOIL WITHIN THE LIMITS OF CONSTRUCTION SHOWN ON THIS PAGE IS DESIGNATED AS ROCK (ANDESITE PYROCLASTICS) IN THE REPORT OF R.T. FRANKLIN & ASSOC. DATED 1-6-66.

39858



P.C. 7810 PAGE 20

DOUBLE SCALE
 NO CHARGE FOR CONNECTIONS FOR COUNTY OF LOS ANGELES
 SEE L.V.M.W.D. FOR CONNECTION CHARGES

NOTE THE SOIL WITHIN THE LIMITS OF CONSTRUCTION SHOWN ON THIS PAGE IS DESIGNATED AS ROCK (ANDESITE PYROCLASTICS) IN THE REPORT OF R.T. FRANKLIN & ASSOC. DATED 1-6-66.

39859