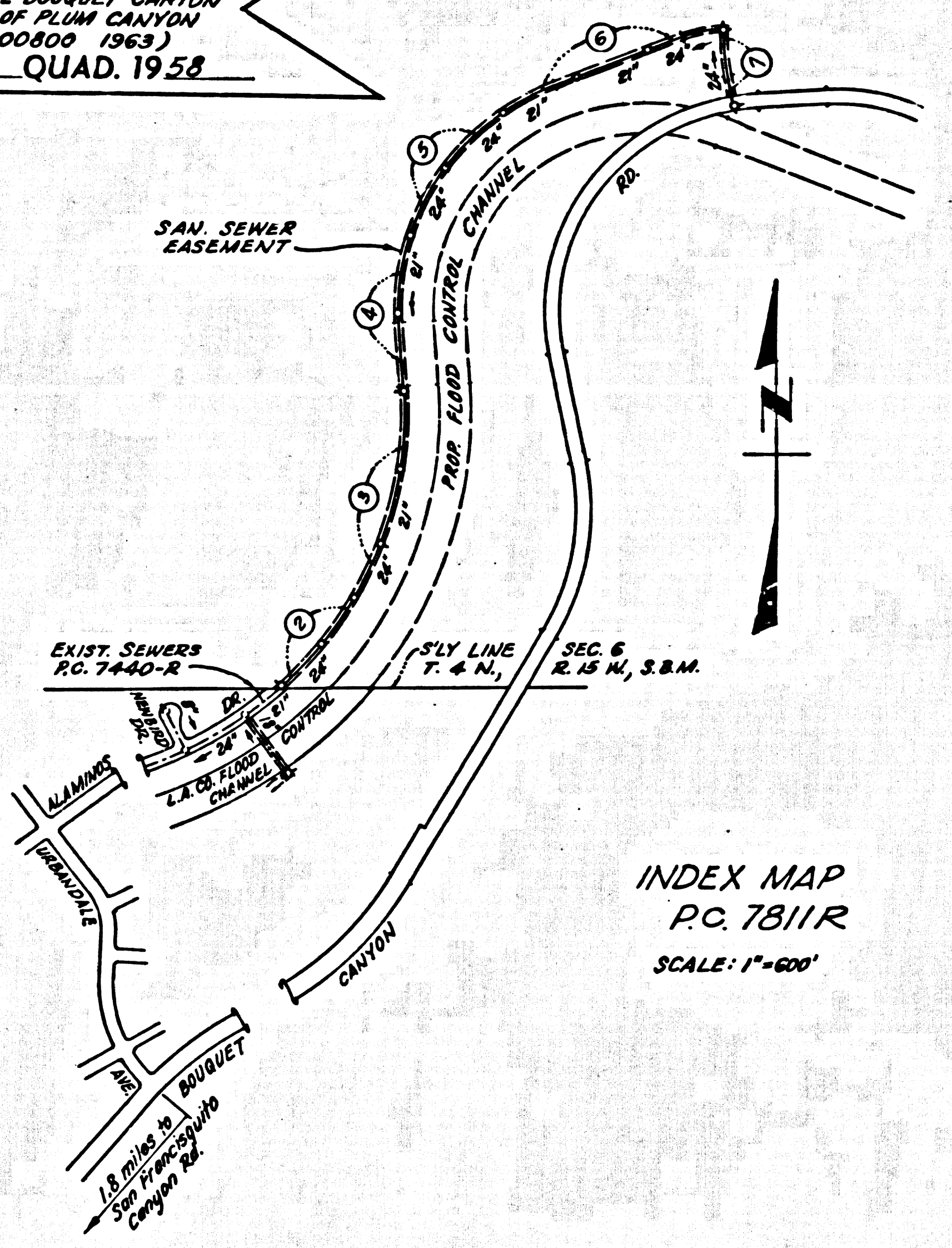


B.M. SL 1741 ELEV. 1349.390
 B.L.B.M.S. V-8 PD. FLOOD CONTROL MON.
 FLOSH ST. SLY & BOUQUET CANYON
 RD. & 175 FT. WLY OF PLUM CANYON
 RD. MCD. (144-00800 1963)
 NEWHALL QUAD. 1958



THE ACCURACY OF THE LOCATION OR OF THE EXISTENCE OR NON-EXISTENCE OF ANY UTILITY PIPE OR STRUCTURE WITHIN THE LIMITS OF THIS PROJECT DOES NOT CONSTITUTE RESPONSIBILITY BY THE ENGINEER.

NOTES FOR CONSTRUCTION IN VICINITY OF BARN AND PENS: (SEE PAGE 6)
 PENS AND PORTIONS OF THE BUILDING STRUCTURE MAY BE REMOVED TO FACILITATE CONSTRUCTION WHERE NECESSARY.
 ANY PORTION OF PENS OR BUILDING STRUCTURE REMOVED OR DAMAGED SHALL BE REPLACED AS SOON AS POSSIBLE, IN LIKENESS AND IN A CONDITION AS GOOD AS EXISTED PRIOR TO CONSTRUCTION.
 CONSTRUCTION ADJACENT TO THE BARN STRUCTURE MAY BE ACCOMPLISHED BY OPEN CUT, TUNNEL, JACKING OR ANY OTHER METHOD ACCEPTABLE TO THE COUNTY ENGINEER AND WHICH MEETS SAFETY REQUIREMENTS.
 IN LIEU OF ENCASEMENT BETWEEN STATIONS 74+13 AND 74+28 OR IN CONNECTION WITH JACKING, ONE IS FOOT LENGTH OF 20 INCH DIAMETER DUCTILE IRON PIPE, THICKNESS CLASS 4, PER ASA A 21.51, 1963, MAY BE USED. PIPE SHALL BE JOINED WITH CERAMICHELD COUPLINGS AS MANUFACTURED BY JOINTS, INC., OR APPROVED EQUAL.
 JACKING SHALL BE PER SPECIFICATIONS, SEC. 81, WITH A MINIMUM LENGTH OF 20 FEET. SIZE AND THICKNESS OF LINER SHALL BE APPROVED BY THE COUNTY ENGINEER.

DOUBLE SCALE
NEWHALL BLDG. DIST. NO. 8.2

PROFILE, ALIGNMENT AND GRADE OF **P.C. 7811R**
SANITARY SEWERS PAGE 1

CONSTRUCTED IN
RIGHTS OF WAY
WEST OF BOUQUET CANYON RD.
PRIVATE CONTRACT NO. 7811R

W.S. 62
 4 SHEETS, 7 PAGES
 SCALE: VERT. 1"=8' HORIZ. 1"=40' **JANUARY, 1967**
 PREPARED IN THE OFFICES OF
MCINTIRE & QUIROS INC.
 670 MONTEREY PARK RD.
 MONTEREY PARK, CALIF.
 REG. C. E. NO. 13810

39419

- NOTE:
1. PROVIDE STAKES ON THE PROPERTY LINE OR PROPERTY LINES PRODUCED AT RIGHT ANGLES TO THE SEWER LINE AT THE CENTER LINE OF EACH MANHOLE.
 2. NO REPRESENTATIVE OF THE COUNTY ENGINEER WILL SURVEY OR LAY OUT ANY PORTION OF THE WORK.
 3. THE PRIVATE ENGINEER SHALL FURNISH THE COUNTY ENGINEER WITH GRADE SHEETS AND STATIONING FOR ALL HOUSE-APPROACH-PIPE "T" BRANCHES AND SHALL PROVIDE STAKES FOR THEM AT THEIR PROPER LOCATIONS WITH STATIONING PLAINLY MARKED.
 4. THE PRIVATE ENGINEER SHALL BE RESPONSIBLE FOR THE PROTECTION OF ALL EXISTING UTILITIES AND STRUCTURES AND SHALL BE RESPONSIBLE FOR THE PROTECTION OF ALL EXISTING UTILITIES AND STRUCTURES AND SHALL BE RESPONSIBLE FOR THE PROTECTION OF ALL EXISTING UTILITIES AND STRUCTURES.
 5. THE PRIVATE ENGINEER SHALL FURNISH THE HOUSE-APPROACH-PIPE AT THE PROPERTY LINE SHOWING THE TOP OF CURB DEVIATION FOR EACH HOUSE LATERAL ON THE GRADE SHEET.
 6. NO REVISIONS SHALL BE MADE IN THESE PLANS WITHOUT THE APPROVAL OF THE COUNTY ENGINEER.
 7. THE CONTRACTOR SHALL NOTIFY THE CONSTRUCTION DIVISION BY TELEPHONE, MADISON 9-0707, EXT. 81381, AT LEAST TWENTY-FOUR HOURS BEFORE STARTING ANY WORK UNDER THIS CONTRACT.
 8. MANHOLES SHALL BE BACK SEWER STRUCTURES PER 9-3-61 OR PRECAST CONCRETE MANHOLES PER 9-3-61 OR 9-3-61 EXCEPT AS NOTED.
 9. USE STANDARD MANHOLE FRAMES AND COVERS, S.I.E. EXCEPT AS NOTED.
 10. MANHOLE TOPS IN UNIMPROVED RIGHTS-OF-WAY TO BE SIX INCHES ABOVE FINISHED GRADE.
 11. USE EXTRA STRENGTH PIPE. ALL PIPE IS STANDARD UNLESS EXCEPT AS NOTED.
 12. USE MECHANICAL COMPRESSION JOINTS FOR ALL V.C.P. JOINTS PER SPEC. SECS. 24, 48 & 49.
 13. IF A POWER POLE IS WITHIN THREE FEET OF THE SEWER, THE SEWER SHALL BE ENCASED, PER 9-3-61, TWO FEET ON EACH SIDE FROM THE POINT OF INTERFERENCE.
 14. IF DURING THE COURSE OF CONSTRUCTION IT IS DETERMINED THAT THERE IS LESS THAN FOUR FEET OF COVER OVER THE TOP OF A MAIN LINE OR HOUSE LATERAL V.C.P. SEWER WHICH IS NOT INDICATED ON THE PLANS, THE PIPE SHALL BE ENCASED PER 9-3-61, UNLESS OTHERWISE APPROVED BY THE COUNTY ENGINEER.
 15. HOUSE-APPROACH-PIPE TO BE CONSTRUCTED WITHIN THE PROPERTY LINE 6 FEET FROM CURB UNLESS EXCEPT AS NOTED.
 16. ASSISTANCE ALL TRENCHES WITHIN PAVED AREAS TO MEET L.A. COUNTY ROAD DEPT. OR CALIFORNIA STATE HIGHWAY REQUIREMENTS IN ACCORDANCE WITH PERMITS.
 17. FOR ALLOWABLE LEAKAGE TEST USE FORMULA NO. 3, SPEC. 4, SEC. 54.
 18. ALL STATE AND LOCAL TRENCH SAFETY ORDERS WILL BE STRICTLY ENFORCED.
 19. ALL JOINTS BETWEEN CAST IRON PIPE AND VITRIFIED CLAY PIPE SHALL BE MADE WITH A RUBBER GASKET JOINT (WITH HOOP IF NECESSARY) PER STANDARD SPECIFICATIONS, SECTION 30, OR APPROVED EQUAL.

COLLECT CHARGES AS INDICATED
Ralph Schuler 1/14/67

NO CONNECTIONS FOR THE DISPOSAL OF INDUSTRIAL WASTES SHALL BE MADE TO SEWERS SHOWN ON THESE DRAWINGS WITHOUT WRITTEN PERMISSION FROM THE CHIEF ENGINEER AND GENERAL MANAGER OF THE COUNTY SANITATION DISTRICTS.

FOR LEGEND SEE PLAN NO. S-1

GRADES TO WHICH THIS IMPROVEMENT IS TO BE CONSTRUCTED ARE SHOWN ON PLANS AND PROFILES. GRADE POINTS FOR TOP OF CURB, CENTER LINE OF STREETS, OR CENTER LINE OF ALLEYS ARE SHOWN BY CIRCLES ON PROFILES. AT ALL POINTS BETWEEN DESIGNATED POINTS THE GRADE SHALL BE ESTABLISHED AS TO CORRESPOND TO A STRAIGHT LINE DRAWN BETWEEN SAID DESIGNATED POINTS. ELEVATIONS ARE IN FEET ABOVE U.S.C. & G.S. SEA LEVEL, DATUM OF 1929. THE DRAWINGS AND THE DATA HEREON ARE HEREBY MADE A PART OF THE SPECIFICATIONS.

WORK SHALL BE CONSTRUCTED ACCORDING TO STANDARD SPECIFICATIONS DATED MAY 21, 1963, AND SHALL BE FILED IN THE OFFICE OF THE COUNTY ENGINEER AND SHALL BE PROSECUTED ONLY IN THE PRESENCE OF THE COUNTY ENGINEER.

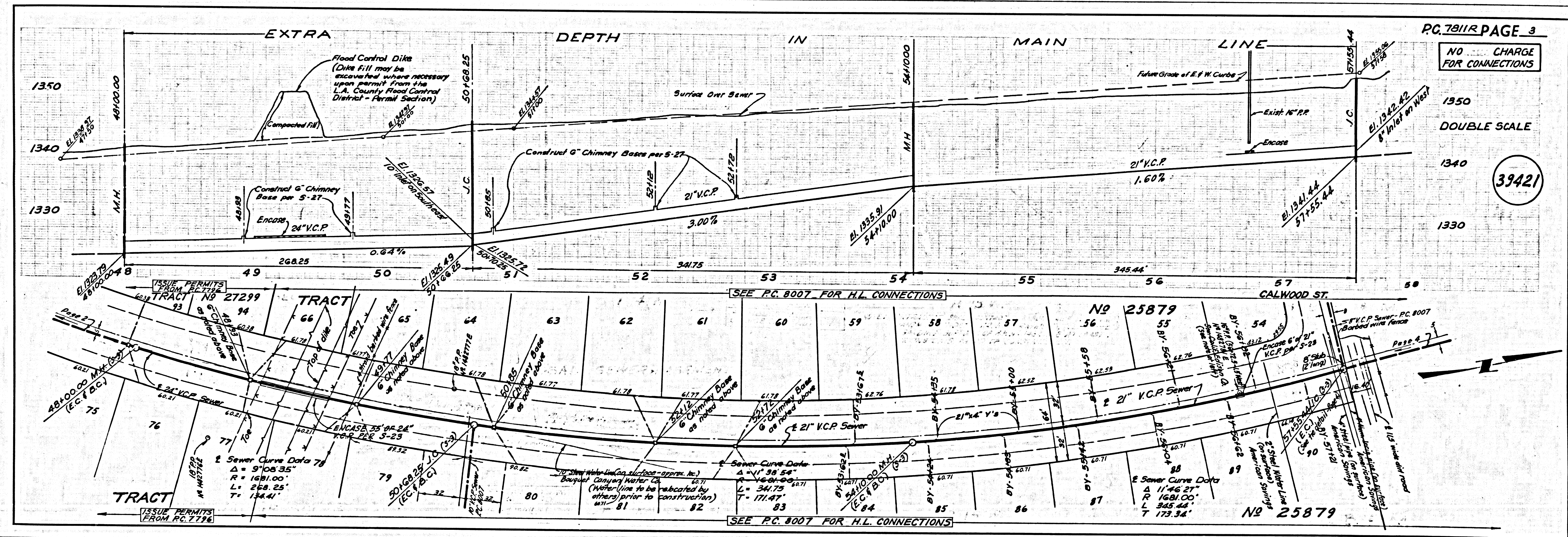
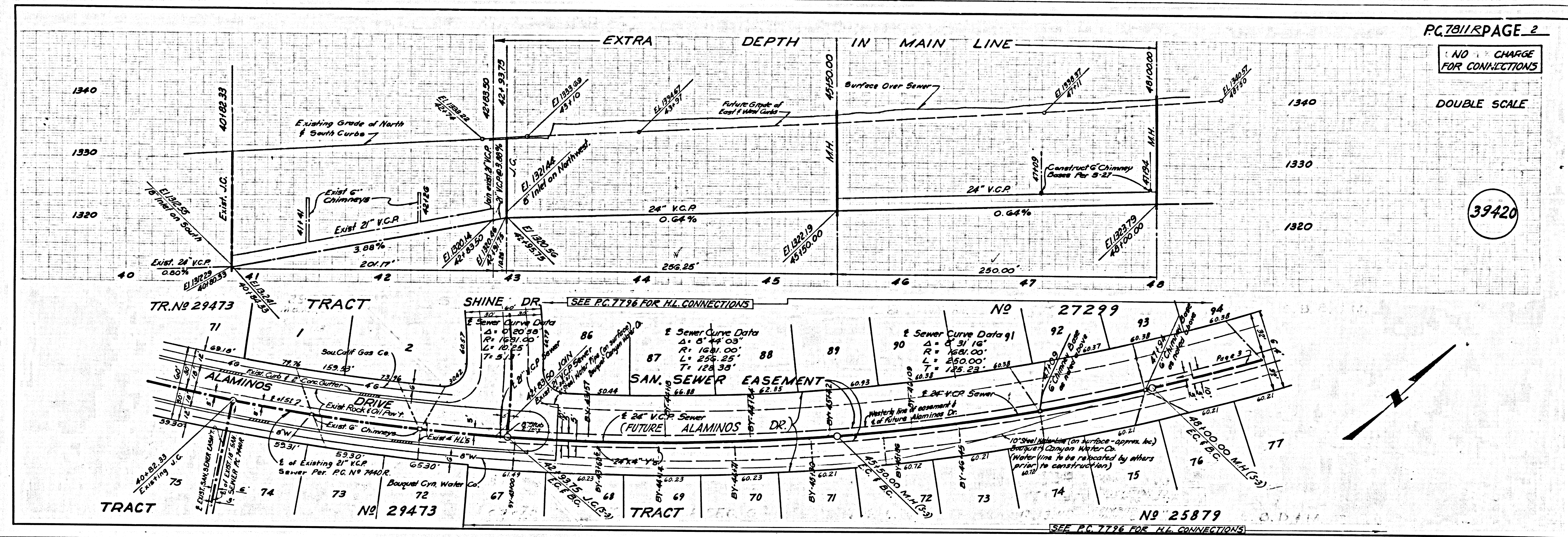
WORK CAN BE STARTED ONLY AFTER THE CONTRACTOR HAS OBTAINED A PERMIT TO EXCAVATE IN COUNTY STREETS FROM THE L.A. COUNTY ROAD DEPT., DISTRICT OFFICE NO. 4, AND PAY A FEE TO THE COUNTY ENGINEER, ROOM 300, COUNTY ENGINEER'S BUILDING, WEST SECOND STREET OF ANGELES, CALIF. 90012. REGIONAL OFFICE, SUPPLEMENT TO COVER THE COST OF CONSTRUCTION PROTECTION AND SECOND PLANS.

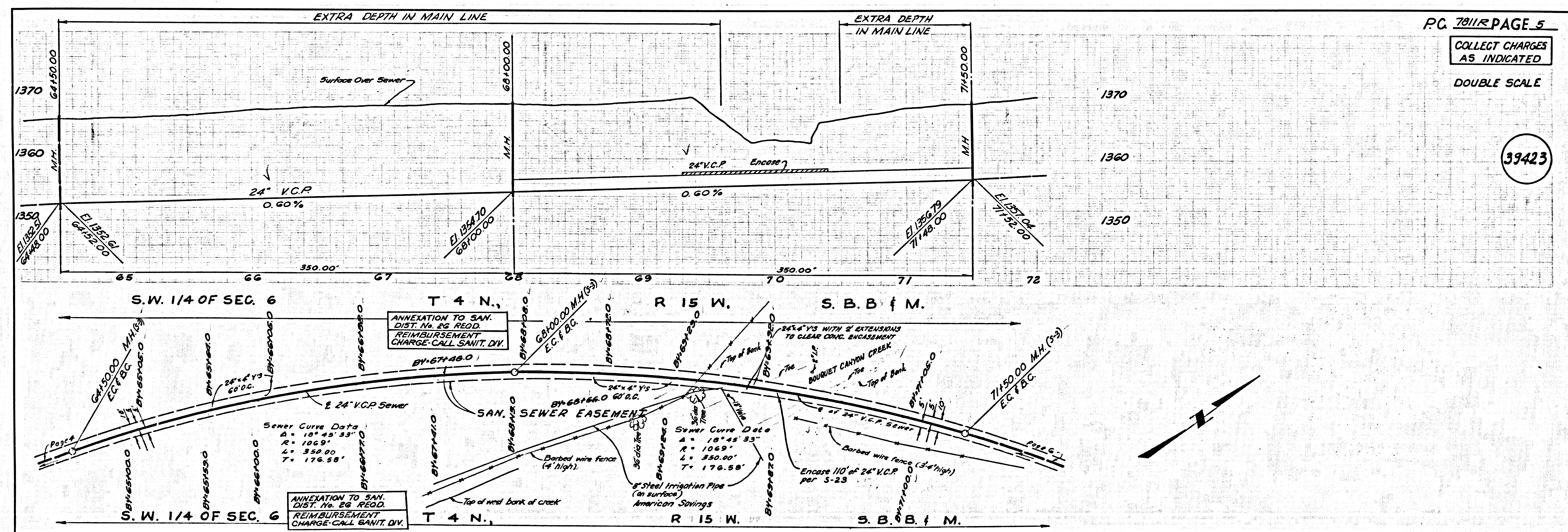
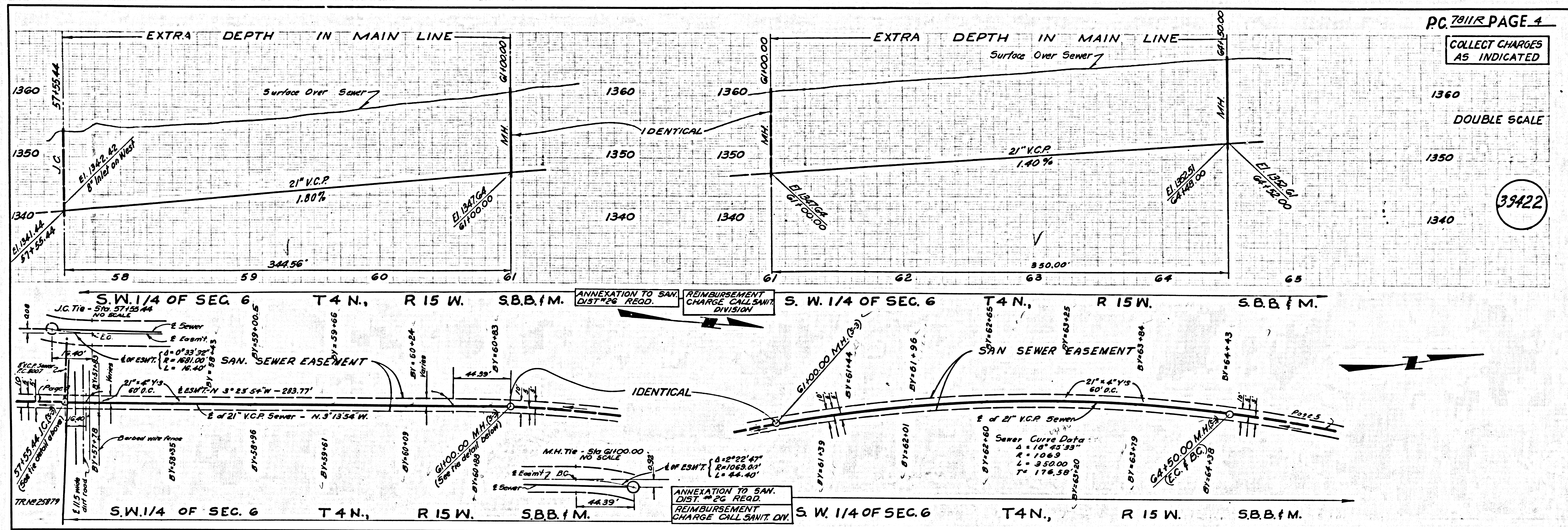
APPROVAL OF THIS PLAN BY THE COUNTY OF LOS ANGELES DOES NOT CONSTITUTE A REPRESENTATION AS TO THE ACCURACY OF THE LOCATION OR OF THE EXISTENCE OR NON-EXISTENCE OF ANY UNDERGROUND UTILITY PIPE, OR STRUCTURE WITHIN THE LIMITS OF THE PROJECT. THIS NOTE APPLIES TO ALL PAGES.

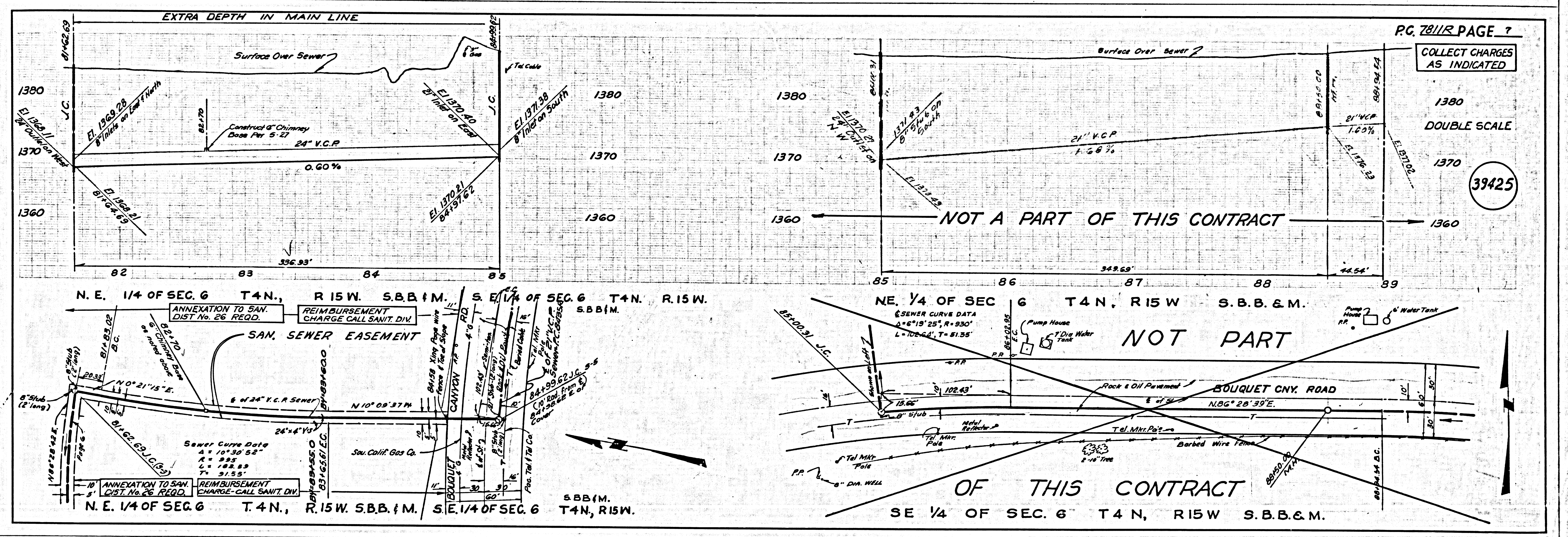
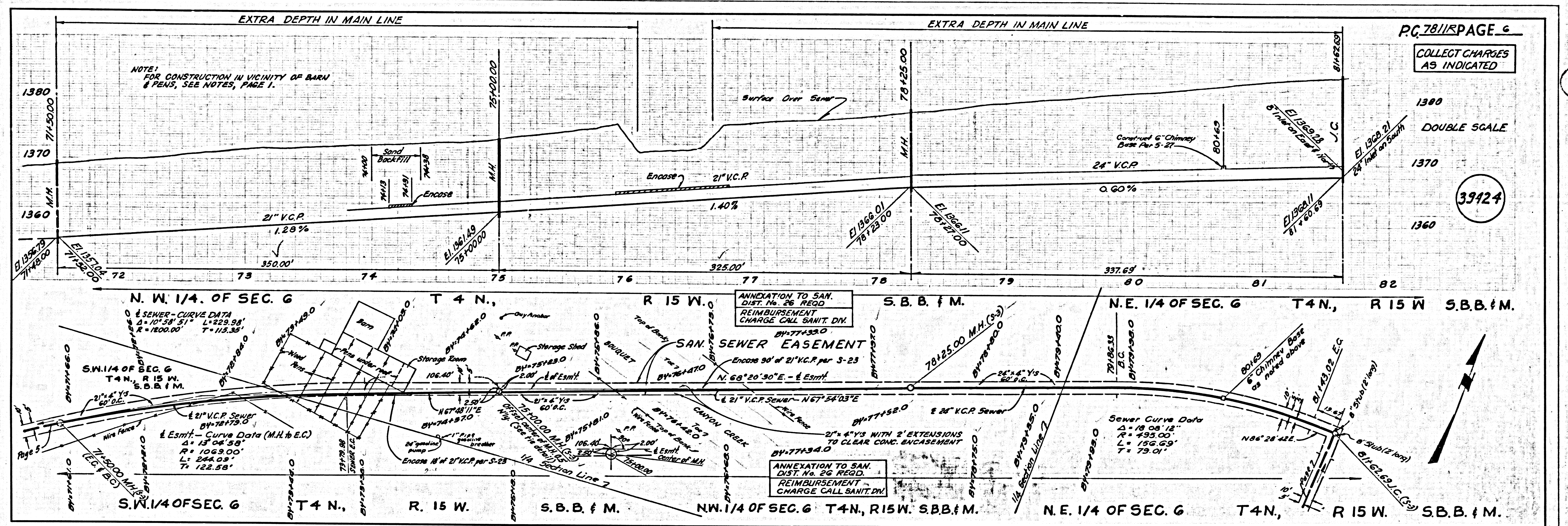
IF WORK IS TO BE DONE IN A STATE HIGHWAY, A PERMIT MUST BE OBTAINED FROM THE STATE OF CALIFORNIA, DIVISION OF HIGHWAYS, 120 SOUTH SPRING STREET, LOS ANGELES, CALIFORNIA.

COUNTY OF LOS ANGELES, CALIFORNIA
 JOHN A. LAMRIS, COUNTY ENGINEER J. D. PARKHURST, CHIEF ENGINEER
 CO. SAN. DIST. NO. 226
 APPROVED BY *Richard M. Cron* ASSISTANT SANITATION ENGINEER APPROVED BY *J. D. Parkhurst* OFFICE ENGINEER
 SUBMITTED BY *Ralph Schuler* REGIONAL ENGINEER
 CHECKED BY *Ralph Schuler* 1/14/67 REG. C.E. NO. 13810

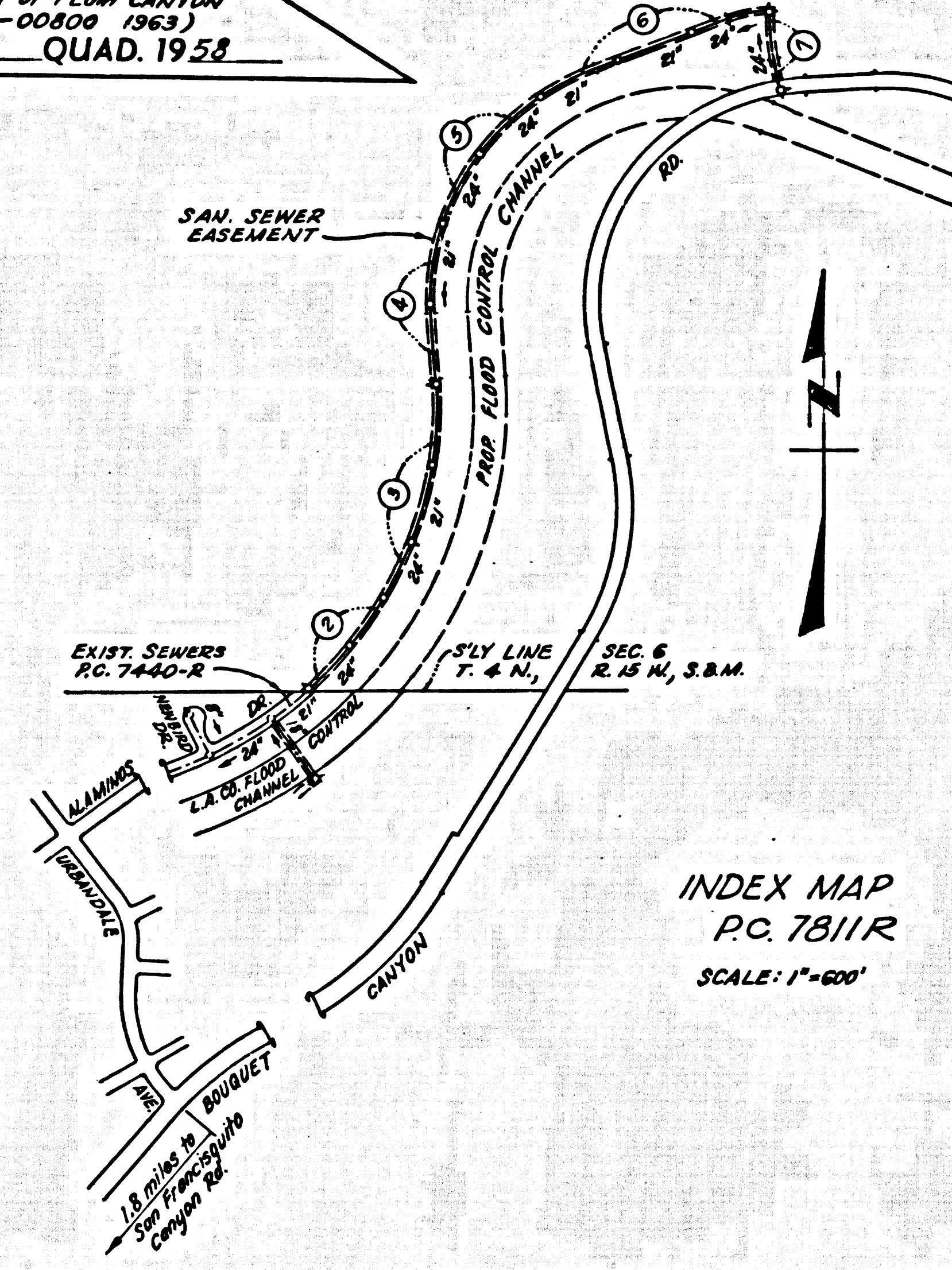
J. N. 0368.26







B.M. SL 1741 ELEV. 1349.390
 31.8 MS V-8 RD. FLOOD CONTROL MON.
 FLOOD 27 FT. SLY & BOUQUET CANYON
 RD. 8 1/2 FT. W/1 OF PLUM CANYON
 RD. MKD. (144-00800 1963)
 NEWHALL QUAD. 1958



INDEX MAP
 P.C. 7811R
 SCALE: 1" = 600'

THE ACCURACY OF THE LOCATION OR THE EXISTENCE OR NON-EXISTENCE OF ANY UTILITY PIPE OR STRUCTURE WITHIN THE LIMITS OF THIS PROJECT DOES NOT CONSTITUTE RESPONSIBILITY BY THE ENGINEER.

NOTES FOR CONSTRUCTION IN VICINITY OF BARN AND PENS: (SEE PAGE 6)

PENS AND PORTIONS OF THE BUILDING STRUCTURE MAY BE REMOVED TO FACILITATE CONSTRUCTION WHERE NECESSARY.

ANY PORTION OF PENS OR BUILDING STRUCTURE REMOVED OR DAMAGED SHALL BE REPLACED, AS SOON AS POSSIBLE, IN LIKENESS AND IN A CONDITION AS GOOD AS EXISTED PRIOR TO CONSTRUCTION.

CONSTRUCTION ADJACENT TO THE BARN STRUCTURE MAY BE ACCOMPLISHED BY OPEN CUT, TUNNEL, JACKING OR ANY OTHER METHOD ACCEPTABLE TO THE COUNTY ENGINEER AND WHICH MEETS SAFETY REQUIREMENTS.

IN LIEU OF ENCASEMENT BETWEEN STATIONS 74+3 AND 74+3 OR IN CONNECTION WITH JACKING, ONE 18 FOOT LENGTH OF 20 INCH DIAMETER DUCTILE IRON PIPE, THICKNESS CLASS 4 PER ASA A 21.51, 1965, MAY BE USED. PIPE SHALL BE JOINED WITH CERAMIC GLEED COUPLINGS AS MANUFACTURED BY JOINTS, INC., OR APPROVED EQUAL.

JACKING SHALL BE PER SPECIFICATIONS, SEC. 61, WITH A MINIMUM LENGTH OF 30 FEET. SIZE AND THICKNESS OF LINER SHALL BE APPROVED BY THE COUNTY ENGINEER.

DOUBLE SCALE
 NEWHALL BLDG. DIST. NO. 8.2

- NOTES:
1. PROVIDE STAKES ON THE PROPERTY LINE OR PROPERTY LINES PRODUCED AT RIGHT ANGLES TO THE SEWER LINE AT THE CENTER LINE OF EACH MANHOLE.
 2. NO REPRESENTATIVE OF THE COUNTY ENGINEER WILL SURVEY OR LAY OUT ANY PORTION OF THE WORK.
 3. THE PRIVATE ENGINEER SHALL FURNISH THE COUNTY ENGINEER WITH GRADE SHEETS AND STATIONING FOR ALL HOUSE LATERALS AND 12" BRANCHES AND SHALL PROVIDE STAKES FOR THEM AT THEIR PROPER LOCATIONS WITH STATIONING PLAINLY MARKED. THE HOUSE LATERALS SHALL BE CONSTRUCTED ON A SLOPE OF 1/8" PER FOOT. THE 12" BRANCHES SHALL BE CONSTRUCTED ON THE SAME SLOPE AS THE MAIN LINE. THE HOUSE LATERALS SHALL BE CONSTRUCTED WITH 12" DIA. V.C.P. PIPE. THE 12" BRANCHES SHALL BE CONSTRUCTED WITH 12" DIA. V.C.P. PIPE. THE HOUSE LATERALS SHALL BE CONSTRUCTED WITH 12" DIA. V.C.P. PIPE. THE 12" BRANCHES SHALL BE CONSTRUCTED WITH 12" DIA. V.C.P. PIPE.
 4. THE PRIVATE ENGINEER SHALL FURNISH THE HOUSE LATERALS WITH THE PROPER LINE AND GRADE TO THE 12" DIA. V.C.P. PIPE. THE HOUSE LATERALS SHALL BE CONSTRUCTED WITH 12" DIA. V.C.P. PIPE.
 5. NO REVISIONS SHALL BE MADE IN THESE PLANS WITHOUT THE APPROVAL OF THE COUNTY ENGINEER.
 6. THE CONTRACTOR SHALL NOTIFY THE CONSTRUCTION DIVISION BY TELEPHONE, MADISON 9-220, EXT. 8158, AT LEAST TWENTY-FOUR HOURS BEFORE STARTING ANY WORK UNDER THIS CONTRACT.
 7. MANHOLES SHALL BE BRICK SEWER STRUCTURES PER S-9 OR PRECAST CONCRETE MANHOLES PER S-9 OR S-8 EXCEPT AS NOTED.
 8. USE STANDARD MANHOLE FRAMES AND COVERS, S-16, EXCEPT AS NOTED.
 9. MANHOLE TOPS IN UNIMPROVED AREAS OF WAY TO BE SIX INCHES ABOVE FINISHED GRADE.
 10. USE EXTRA STRENGTH PIPE, ALL PIPE IS STANDARD DEPTH EXCEPT AS NOTED.
 11. USE MECHANICAL COMPRESSION JOINTS FOR ALL V.C.P. JOINTS PER SPEC., SECT. 54, AS S-8.
 12. IF A POWER POLE IS WITHIN THREE FEET OF THE SEWER, THE SEWER SHALL BE ENCASED, PER S-27, TWO FEET ON EACH SIDE FROM THE POINT OF INTERFERENCE.
 13. IF DURING THE COURSE OF CONSTRUCTION IT IS DETERMINED THAT THERE IS LESS THAN FOUR FEET OF COVER OVER THE TOP OF A MAIN LINE OR HOUSE LATERAL V.C.P. SEWER WHICH IS NOT INDICATED ON THE PLANS, THE PIPE SHALL BE ENCASED PER S-25, UNLESS OTHERWISE APPROVED BY THE COUNTY ENGINEER.
 14. "HOUSE LATERALS" TO BE CONSTRUCTED WITH 12" DIA. V.C.P. PIPE 2 FEET BELOW CURB GRADE EXCEPT AS NOTED.
 15. REPAIRS ALL TRENCHES WITHIN PAVED AREAS TO MEET L.A. COUNTY ROAD DEPT. OR CALIFORNIA STATE HIGHWAY REQUIREMENTS IN ACCORDANCE WITH PERMITS.
 16. FOR ALLOWABLE LEAKAGE TEST USE FORMULA NO. 2, SPEC. S. 54.
 17. ALL STATE AND LOCAL TRENCH SAFETY ORDERS WILL BE STRICTLY ENFORCED.
 18. ALL JOINTS BETWEEN CAST IRON PIPE AND VITRIFIED CLAY PIPE SHALL BE MADE WITH A FLEASER SLEEVE JOINT (WITH HOOP IF NECESSARY) PER STANDARD SPECIFICATIONS, SECTION 80, OR APPROVED EQUAL.

PROFILE, ALIGNMENT AND GRADE OF P.C. 7811R
 SANITARY SEWERS PAGE 1

CONSTRUCTED IN
 RIGHTS OF WAY
 WEST OF BOUQUET CANYON RD.
 PRIVATE CONTRACT NO. 7811R

W.S. 62
 4 SHEETS, 7 PAGES

SCALE: VERT. 1" = 8'
 HORIZ. 1" = 40'
 JANUARY, 1967

PREPARED BY THE OFFICE OF
 MCINTIRE & GUARDS, INC.
 670 MONTEREY PARK RD.
 MONTEREY PARK, CALIF.
 BY: *George J. ...*
 REG. C. E. NO. 15810

39419

FOR LEGEND SEE PLAN NO. S-1

NOTES:

GRADES TO WHICH THIS IMPROVEMENT IS TO BE CONSTRUCTED ARE SHOWN ON PLANS AND PROFILES. GRADE POINTS FOR TOP OF CURB, CENTER LINE OF STREETS, OR CENTER LINE OF ALLEYS ARE SHOWN BY CIRCLES ON PROFILES. AT ALL POINTS BETWEEN DESIGNATED POINTS THE GRADE SHALL BE ESTABLISHED SO AS TO CONFORM TO A STRAIGHT LINE DRAWN BETWEEN SAID DESIGNATED POINTS. ELEVATIONS ARE IN FEET ABOVE U.S.C. & G.S. SEA LEVEL DATUM OF 1929.

THIS DRAWING AND THE DATA HEREON ARE HEREBY MADE A PART OF THE SPECIFICATIONS.

WORK SHALL BE CONSTRUCTED ACCORDING TO STANDARD SPECIFICATIONS DATED MAY 22, 1966 WHICH ARE ON FILE IN THE OFFICE OF THE COUNTY ENGINEER AND SHALL BE PROSECUTED ONLY IN THE PRESENCE OF THE COUNTY ENGINEER.

BEFORE WORK CAN BE STARTED, THE CONTRACTOR MUST OBTAIN A PERMIT TO EXCAVATE IN COUNTY STREETS FROM THE L.A. COUNTY ROAD DEPT., DISTRICT OFFICE NO. 4, AND PAY A FEE TO THE COUNTY ENGINEER, ROOM 303, COUNTY ENGINEERING BUILDING, 120 SOUTH SPRING STREET, LOS ANGELES, CALIF. REGIONAL OFFICE, SUFFICIENT TO COVER THE COST OF CONSTRUCTION INSPECTION AND RECORD PLANS.

APPROVAL OF THIS PLAN BY THE COUNTY OF LOS ANGELES DOES NOT CONSTITUTE A REPRESENTATION AS TO THE ACCURACY OF THE LOCATION OF OR THE EXISTENCE OR NON-EXISTENCE OF ANY UNDERGROUND STREETS, PIPES, OR STRUCTURES WITHIN THE LIMITS OF THE PROJECT. THIS NOTE APPLIES TO ALL PAGES.

IF WORK IS TO BE DONE IN A STATE HIGHWAY, A PERMIT MUST BE OBTAINED FROM THE STATE OF CALIFORNIA, DIVISION OF HIGHWAYS, 120 SOUTH SPRING STREET, LOS ANGELES, CALIFORNIA.

COUNTY OF LOS ANGELES, CALIFORNIA
 JOHN A. LAMBE, COUNTY ENGINEER
 APPROVED BY: *Richard M. ...*
 ASSISTANT SANITATION ENGINEER

J. D. PARKHURST, CHIEF ENGINEER
 CO. SAN. DIST. NO. 8.2
 APPROVED BY: *J. D. Parkhurst*
 OFFICE ENGINEER

SUBMITTED BY: *John D. ...*
 REGIONAL ENGINEER

CHECKED BY: *Ralph ...*
 DIV. C. E. NO. 13466

COLLECT CHARGES
 AS INDICATED
Ralph ... 1/14/67

NO CONNECTIONS FOR THE DISPOSAL OF INDUSTRIAL WASTES SHALL BE MADE TO SEWERS SHOWN ON THESE DRAWINGS WITHOUT WRITTEN PERMISSION FROM THE CHIEF ENGINEER AND GENERAL MANAGER OF THE COUNTY SANITATION DISTRICTS.

J.N. 0368 26

