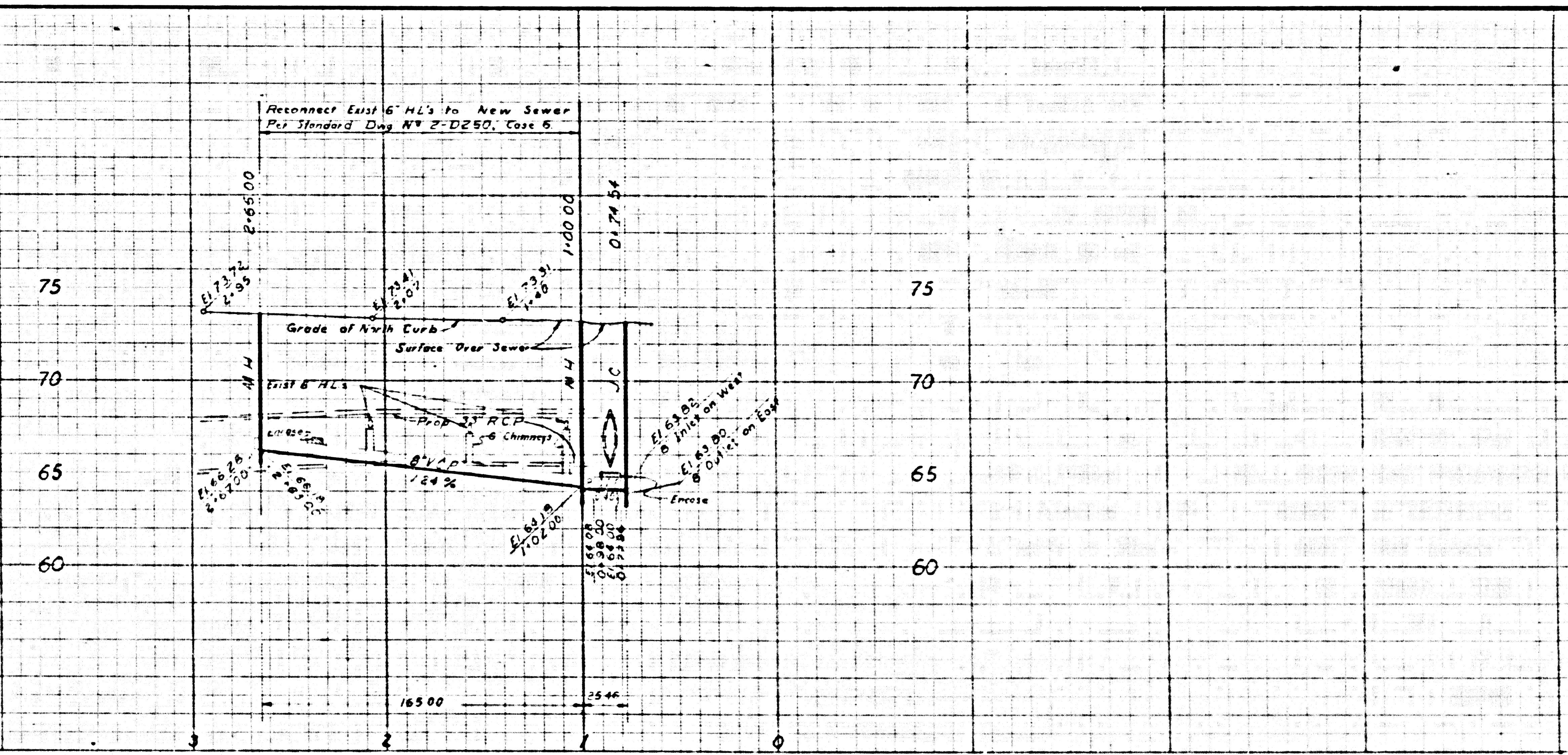


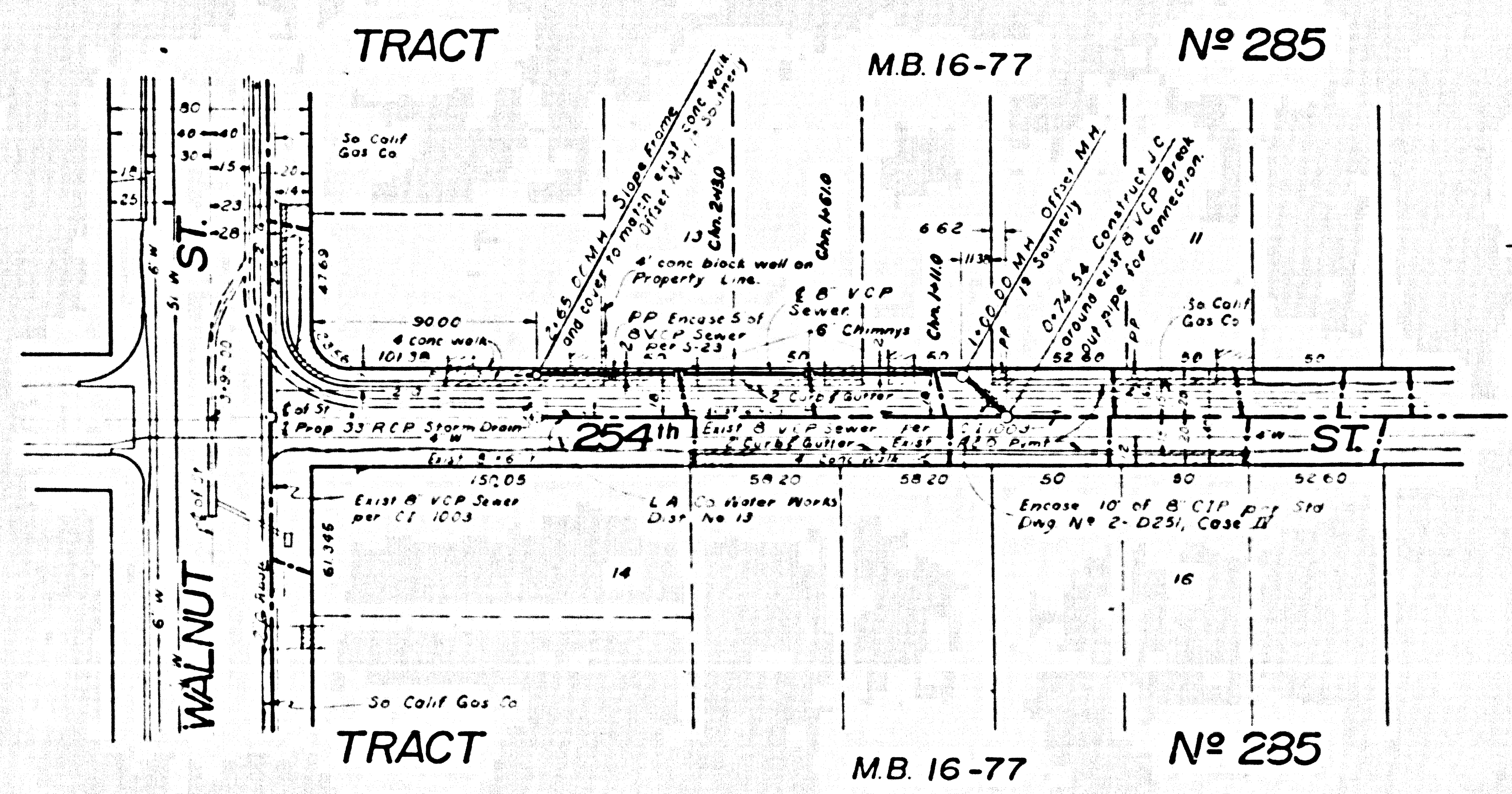
B.M. SD 2524 FB 2164-91  
Walnut St and W. 254th St. N.E. Corner  
Bl. Spk. In Cb 20' E. of C.R.

PROFILE SCALE  
Horiz. 1" = 40'  
Vert. 1" = 4'



**GENERAL SEWER NOTES**

1. For legend see Standard Plan S-1
2. Use extra strength vitrified clay pipe, except as noted
3. Use mechanical compression joints for all vitrified clay pipe sewers per Sections 36, 48, B, 49 of Standard Sewer Specifications
4. All structures shall be either brick manholes per S-3 or precast concrete manholes per S-5 or S-6, except as noted
5. Use standard manhole frames & covers per Standard Plan S-15
6. Use formula No 2, Section 54 of Standard Sewer Specifications, to compute allowable leakage
7. Existing service to be maintained at all times
8. Resurface trenches within paved area of streets per Section 69 of Standard Sewer Specifications
9. Abandoned portions of house laterals shall be sealed per Section 60 of Standard Sewer Specifications
10. Sundry sewers shall be constructed according to Standard Specifications dated May 25, 1962, as revised, on file in the Office of the City Engineer. B shall be prosecuted only in the presence of the City Engineer.
11. The Contractor shall notify the Construction Division by telephone MA 9-4747 Ext. 81551, at least 24 hours before starting any work under this project.
12. No revisions shall be made in these plans without the approval of the City Engineer.
13. Approval of the sewer plans for this project by the City of Lomita does not constitute a representation as to the accuracy of the location of, or the existence or non-existence of any underground utility pipe or structure within the limits of this project.
14. Remove and replace existing sidewalk per Section 67 of Standard Sewer Specifications.
15. Use bell and spigot slip on type joints for all cast iron pipe sewers per Section 40 of Standard Sewer Specifications.



NO CHARGE FOR CONNECTIONS

40733

REVISIONS		
NO.	DATE	DESCRIPTION

APPROVED BY  
**JOHN D. PARKHURST**  
CHIEF ENGINEER  
COUNTY SAN DIST NO 5

PREPARED BY  
**JOHN A. LAMBIE**  
CITY ENGINEER  
CITY OF LOMITA

1964 STORM DRAIN BOND ISSUE  
LOS ANGELES COUNTY  
FLOOD CONTROL DISTRICT

STA. \_\_\_\_\_ TO STA. \_\_\_\_\_  
**PLAN AND PROFILE**

SCALE: HORIZ. 1" = 40'  
VERT. 1" = 4'

DATE: \_\_\_\_\_ DWG. NO. \_\_\_\_\_ SHEET \_\_\_\_\_ OF \_\_\_\_\_

NO CONNECTIONS FOR THE DISPOSAL OF INDUSTRIAL WASTES SHALL BE MADE UNLESS SHOWN ON THESE PLANS WITHOUT WRITTEN APPROVAL IN THE PRESENCE OF THE CHIEF ENGINEER AND GENERAL MANAGER OF THE COUNTY SANITATION DISTRICTS