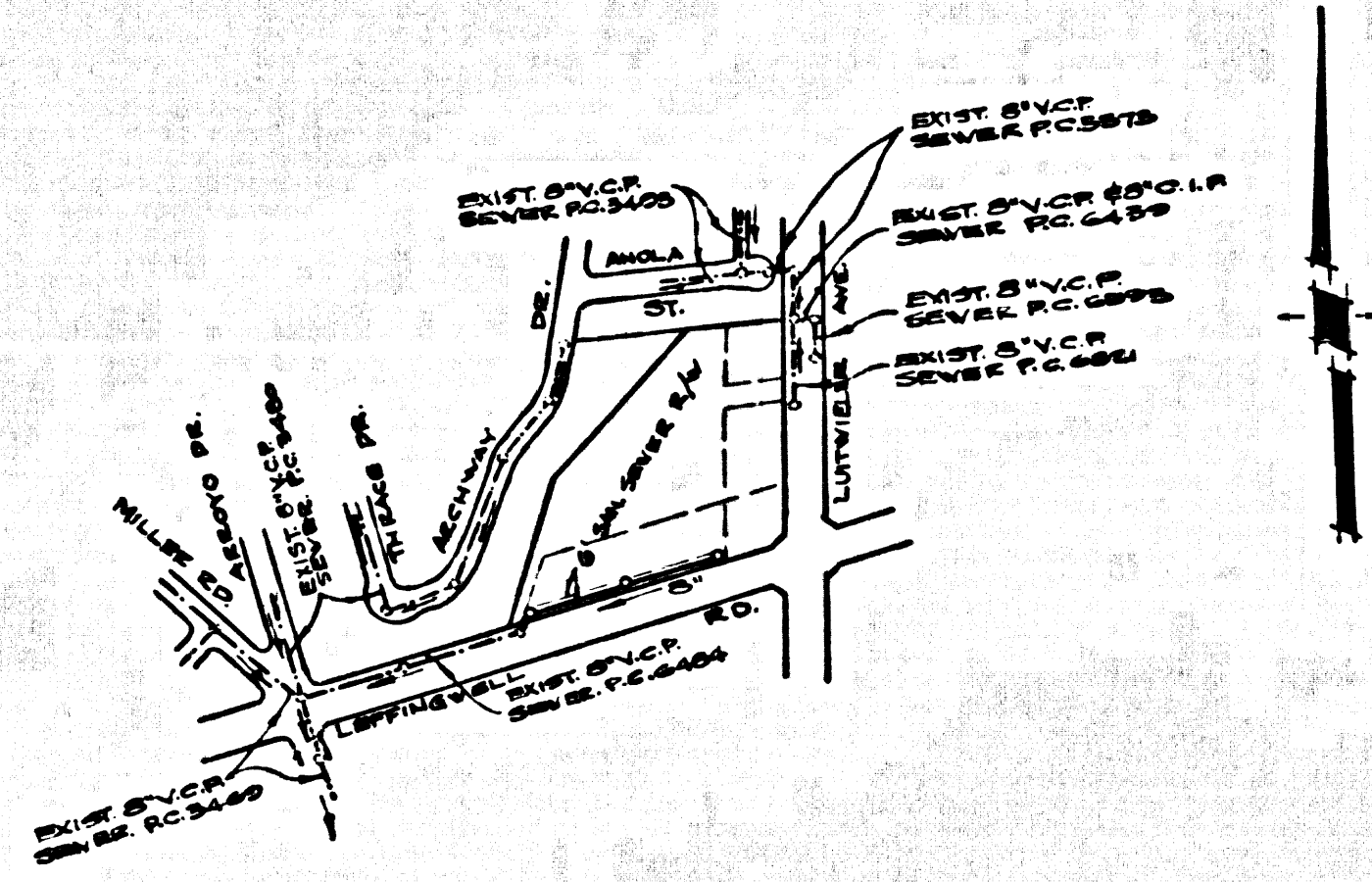


B.M. BY 2740 ELEV. 191.840  
 44 S.N. N. END CATCH BASIN N. SIDE  
 LEFFINGWELL R.D. 40 FT. N. E 450 FT.  
 W. E. LUTWIELER AVE. 500 FT. E. E  
 48000 08.  
 L.A. MIRADA QUAD. 1905



INDEX MAP  
 SCALE 1"=600' RC. 7017

# WHITTIER BLDG. DIST. NO. 11

- NOTES:
1. PROFILE STAKES ON THE PROPERTY LINE OR PROPERTY LINES PRODUCED AT RIGHT ANGLES TO THE SEWER LINE AT THE CENTER LINE OF EACH MANHOLE.
  2. NO REPRESENTATIVE OF THE COUNTY ENGINEER WILL SURVEY OR LAY OUT ANY PORTION OF THE WORK.
  3. THE PRIVATE ENGINEER SHALL FURNISH THE COUNTY ENGINEER WITH GRADE SHEETS AND STATIONING FOR ALL "T" MANHOLES AND SHALL PROVIDE STAKES FOR THEM AT THEIR PROPER LOCATIONS WITH STATIONING PLAINLY MARKED.

4. NO REVISIONS SHALL BE MADE IN THESE PLANS WITHOUT THE APPROVAL OF THE COUNTY ENGINEER.
5. THE CONTRACTOR SHALL NOTIFY THE CONSTRUCTION DIVISION BY TELEPHONE, MADISON 9-5747, EXT. 81531, AT LEAST TWENTY-FOUR HOURS BEFORE STARTING ANY WORK UNDER THIS CONTRACT.
6. MANHOLES SHALL BE BRICK SEWER STRUCTURES PER S-2.
7. USE STANDARD MANHOLE FRAMES AND COVERS, S-18.
8. MANHOLE TOPS AT FINISHED GRADE.
9. USE SEWER STRENGTH PIPE. ALL PIPE IS STANDARD DEPTH.
10. USE MECHANICAL COMPRESSION JOINTS FOR ALL V.C.P. JOINTS PER S.P.C.S., SEC. 36, 48 & 49.
11. IF A POWER POLE IS WITHIN THREE FEET OF THE SEWER, THE SEWER SHALL BE ENCASED, PER S-23, TWO FEET ON EACH SIDE FROM THE POINT OF INTERFERENCE.
12. IF DURING THE COURSE OF CONSTRUCTION IT IS DETERMINED THAT THERE IS LESS THAN FOUR FEET OF COVER OVER THE TOP OF A MAIN LINE V.C.P. SEWER WHICH IS NOT INDICATED ON THE PLANS, THE PIPE SHALL BE ENCASED PER S-23, UNLESS OTHERWISE APPROVED BY THE COUNTY ENGINEER.
13. RESURFACE ALL TRENCHES WITHIN PAVED AREAS TO MEET L.A. COUNTY ROAD DEPT. OR CALIFORNIA STATE HIGHWAY REQUIREMENTS IN ACCORDANCE WITH PERMITS.
14. FOR ALLOWABLE LEAKAGE TEST USE FORMULA NO. 2, S.P.C.S., SEC. 24.
15. ALL STATE AND LOCAL TRENCH SAFETY ORDERS WILL BE STRICTLY ENFORCED.

PROFILE, ALIGNMENT AND GRADE OF **P.C. 7017**  
**SANITARY SEWERS** PAGE 1

TO BE CONSTRUCTED IN  
**SANITARY SEWER R/W N. SIDE OF  
 LEFFINGWELL RD. W. LY OF LUTWIELER AVE.**

**PRIVATE CONTRACT NO. 7817**

W.S. 34  
 SHEET 2 PAGES  
 SCALE: VERT. 1"=4' HORIZ. 1"=40'  
 FEBRUARY, 1967

39265

PREPARED IN THE OFFICES OF  
**THOMSEN ENGINEERING, INC.**

By: *Russ C. Thomsen*  
 REG. C. E. NO. 8244

FOR LEGEND SEE PLAN NO. S-1

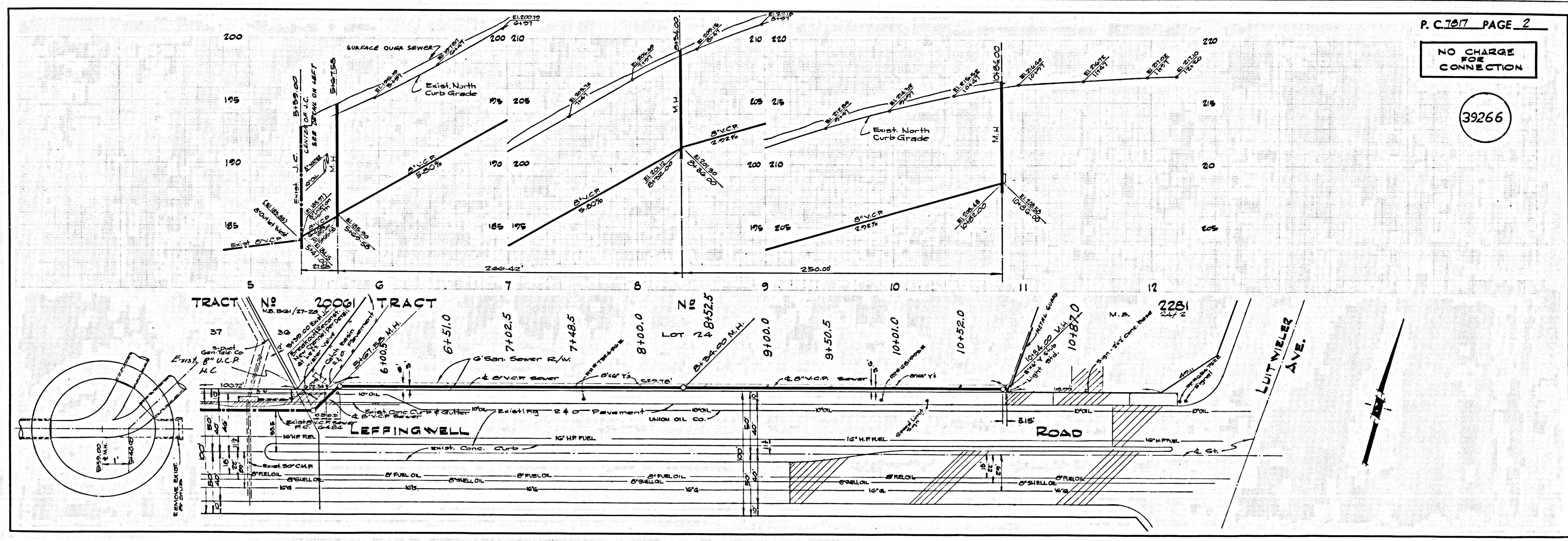
NOTE:  
 GRADES TO WHICH THIS IMPROVEMENT IS TO BE CONSTRUCTED ARE SHOWN ON PLANS AND PROFILES. GRADE POINTS FOR TOP OF CURBS, CENTER LINE OF STREETS, OR CENTER LINE OF ALLEYS ARE SHOWN BY CIRCLES ON PROFILES AT ALL POINTS BETWEEN DESIGNATED POINTS THE GRADE SHALL BE ESTABLISHED SO AS TO CONFORM TO A STRAIGHT LINE ANALYSIS BETWEEN SAID DESIGNATED POINTS. ELEVATIONS ARE IN FEET ABOVE U.S.C. & G.S. MEAN LEVEL DATUM OF 1929. THE LEAVING AND THE DATA HEREON ARE HEREBY MADE A PART OF THE SPECIFICATIONS. **PERMITS** ON FILE IN THE OFFICE OF THE COUNTY ENGINEER AND SHALL BE PROCURED ONLY IN THE PRESENCE OF THE COUNTY ENGINEER. BEFORE WORK CAN BE STARTED, THE CONTRACTOR MUST OBTAIN A PERMIT TO EXCAVATE IN COUNTY STREETS FROM THE L.A. COUNTY ROAD DEPT., DISTRICT OFFICE NO. 17 AND PAY A FEE TO THE COUNTY ENGINEER, ROOM 303, COUNTY ENGINEER'S BUILDING, 100 WEST SECOND STREET OR LOS ANGELES REGIONAL OFFICE, SUPPLEMENT TO COVER THE COST OF CONSTRUCTION INSPECTION AND RECORD PLANS. APPROVAL OF THIS PLAN BY THE COUNTY OF LOS ANGELES DOES NOT CONSTITUTE A REPRESENTATION AS TO THE ACCURACY OF THE LOCATION OR OF THE EXISTENCE OR NON-EXISTENCE OF ANY UNDERGROUND UTILITY PIPE, OR STRUCTURE WITHIN THE LIMITS OF THE PROJECT. THIS NOTE APPLIES TO ALL PAGES. IF WORK IS TO BE DONE IN A STATE HIGHWAY, A PERMIT MUST BE OBTAINED FROM THE STATE OF CALIFORNIA, DIVISION OF HIGHWAYS, 120 SOUTH SPRING STREET, LOS ANGELES, CALIFORNIA.

COUNTY OF LOS ANGELES, CALIFORNIA  
 JOHN A. LAMBIE, COUNTY ENGINEER J. D. PARKHURST, CHIEF ENGINEER  
 CO. SAN. DIST. NO. 11  
 APPROVED BY: *Richard M. Cron* ASSISTANT SANITATION ENGINEER APPROVED BY: *J. D. Parkhurst* CHIEF ENGINEER  
 SUBMITTED BY: *James C. Thomsen* REGIONAL ENGINEER  
 CHECKED BY: *Quella E. McCall* REG. C. E. NO. 15731

**COLLECT CHARGES  
 AS INDICATED**  
*Received 27 cents May 19, 1967*

NO CONNECTIONS FOR THE DISPOSAL OF INDUSTRIAL WASTES SHALL BE MADE TO SEWERS SHOWN ON THESE DRAWINGS WITHOUT WRITTEN PERMISSION FROM THE CHIEF ENGINEER AND GENERAL MANAGER OF THE COUNTY SANITATION DISTRICTS.

J. N. 0366.10



P. C. 7017 PAGE 2

NO CHARGE FOR CONNECTION

39266