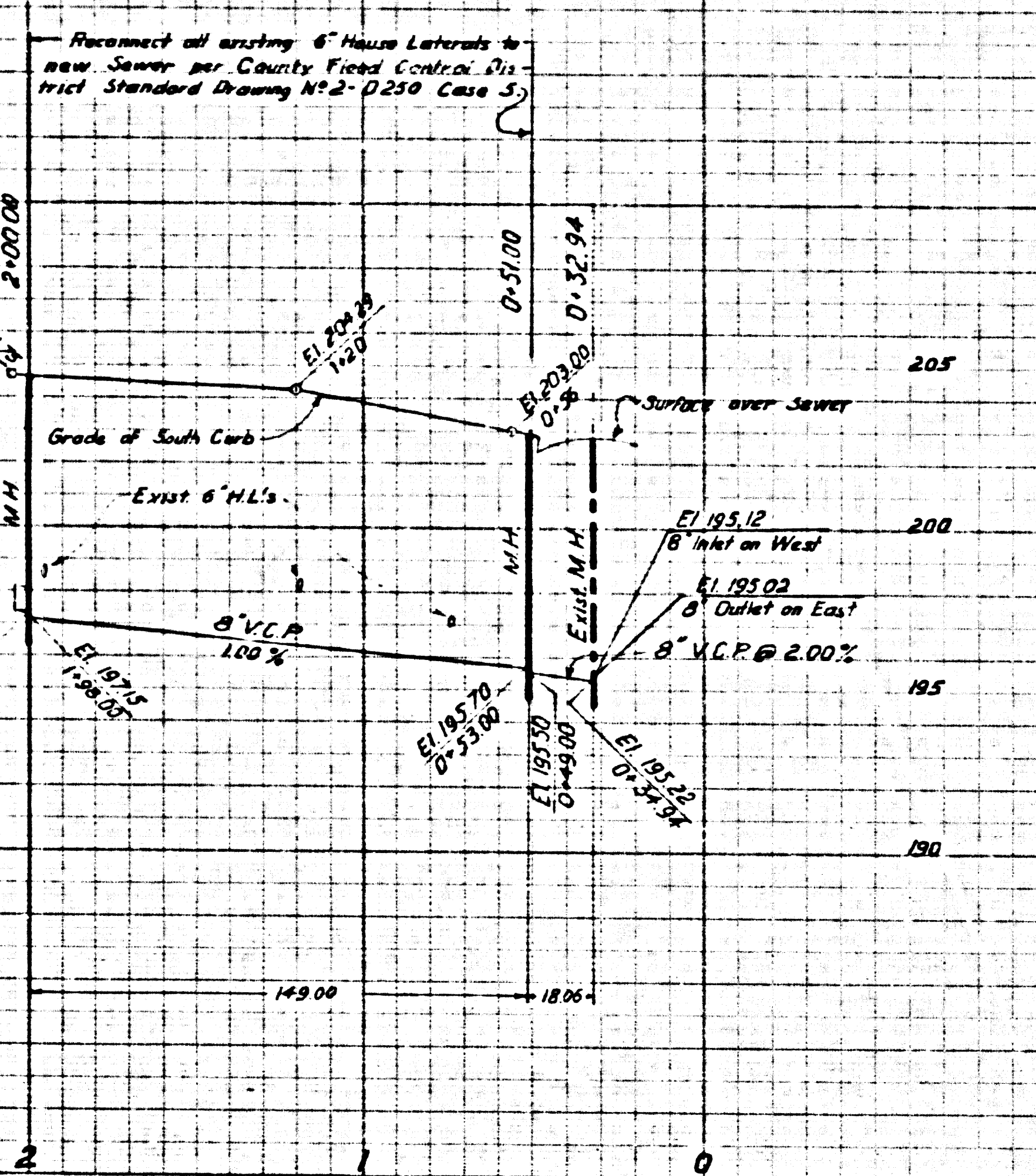


**PROFILE SCALE**

HORIZ. 1" = 40'  
VERT. 1" = 4'



B.M. S.D. 2537 EL. = 206.667 F.B. 3328-200  
OLYMPIAD DR. & MULLEN PL., NW COR.  
BT SPK IN CB. 1' W. OF W. END C.R.

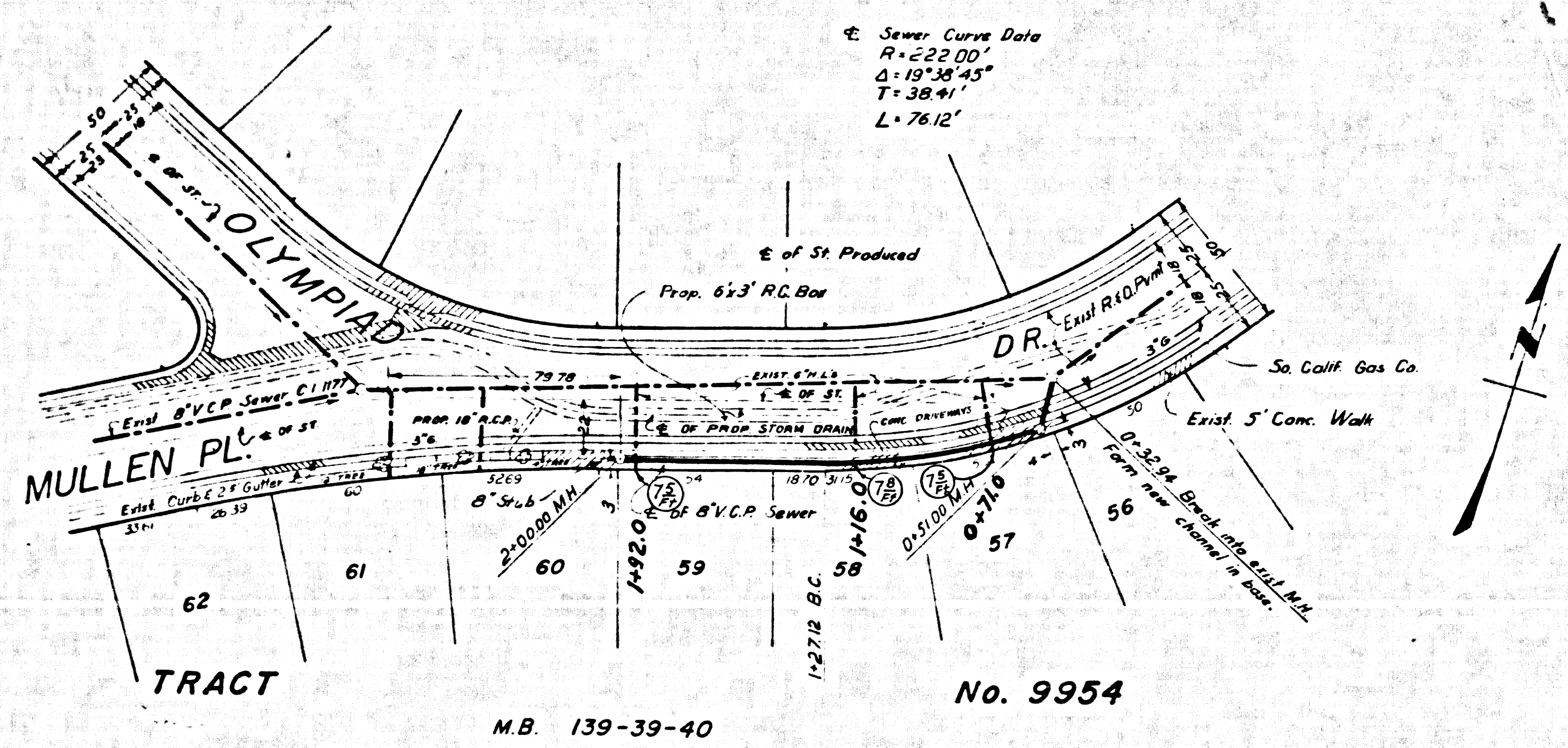
**GENERAL SEWER NOTES**

1. Sanitary sewers shall be constructed according to Standard Specifications dated May 25, 1962, as revised, on file in the Office of the County Engineer & shall be prosecuted only in the presence of the County Engineer.
2. For legend see Standard Plan S-1.
3. Use extra strength vitrified clay pipe.
4. Use mechanical compression joints for all vitrified clay pipe sewers per Sections 36, 48, & 49 of Standard Sewer Specifications.
5. All structures shall be either brick manholes per S-3 or precast concrete manholes per S-5 or S-6, except as noted.
6. Use standard manhole frames & covers per Standard Plan S-5.
7. Use formula No. 2, Section 54 of Standard Sewer Specifications, to compute allowable leakage.
8. Existing service to be maintained at all times.
9. Resurface trenches within paved area of streets per Section 69 of Standard Sewer Specifications.
10. Abandoned portions of house laterals shall be sealed per Section 60 of Standard Sewer Specifications.
11. The Contractor shall notify the Construction Division by telephone, 629-4747, Ext. 81551, at least 24 hours before starting city work under this project.
12. No revisions shall be made in these plans without the approval of the County Engineer.
13. Approval of the sewer plans for this project by the County of Los Angeles does not constitute a representation as to the accuracy of the location or the existence or non-existence of any underground utility pipe or structure within the limits of this project.
14. Remove & replace existing sidewalk per Section 67 of Standard Sewer Specifications.

40801

40605

P.C. 7853 (20, 7851, NO. 679)



NO CHARGE FOR CONNECTIONS

REVISIONS		
MARK	DATE	DESCRIPTION

M.B. 139-39-40

No. 9954

APPROVED BY  
**JOHN D. PARKHURST**  
CHIEF ENGINEER  
COUNTY SAN. DIST. No. 5

PREPARED BY  
**JOHN A. LAMBIE**  
COUNTY ENGINEER

P.C. No. 7853  
RECOMMENDED BY  
*Richard M. Cron*  
ASSISTANT SANITATION DESIGN ENGINEER

P.C. 7853  
1964 STORM DRAIN BOND ISSUE  
LOS ANGELES COUNTY  
FLOOD CONTROL DISTRICT

S.D. PROJECT No. 679

STA. TO STA.  
**PLAN AND PROFILE**

APPROVAL RECOMMENDED BY

SCALE: HORIZ. 1" = 40'  
VERT. 1" = 4'

DATE: 4-24-1967

DWG. NO. SHEET OF