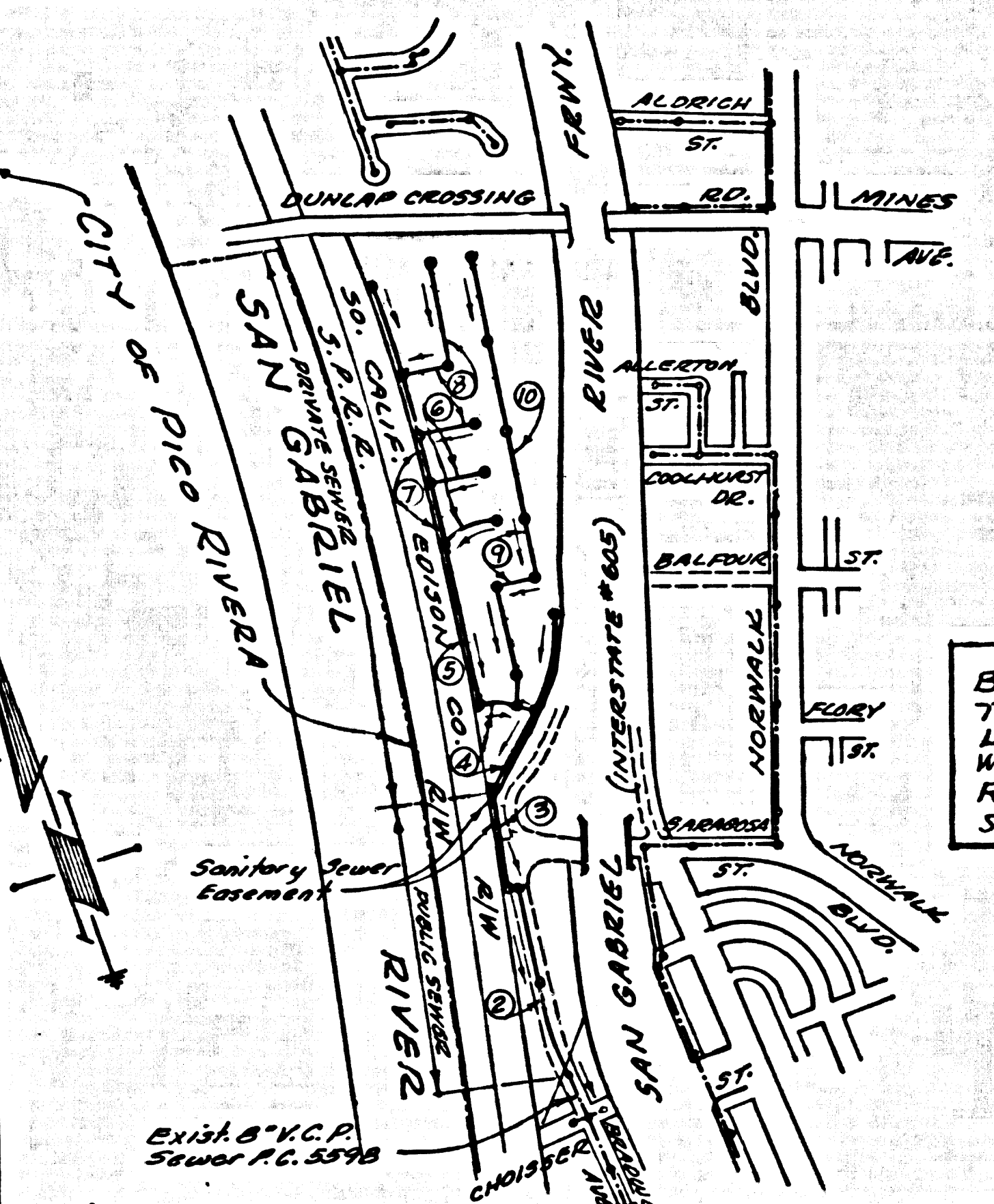


B.M. BY 3757 ELEV. 164.874
 4.75th. E. of S. DOR @ S.E. Cor.
 DUNLAP CROSSING RD. (MINNESOTA BLVD.)
 8 NORTHW. COR. 38th. E. & 77th. W.
 5. 8th. RIVERA QUAD. 1965

REVISION: 12-5-67
 1. PERMIT THE CONSTRUCTION OF PRECAST CONCRETE MANHOLES AT ALL LOCATIONS
 2. PAGE 3A, OFFSET MANHOLE AT STA. 7+43.21 ONE FOOT EASTWARD
 3. PAGE 4A, OFFSET MAIN LINE SEWER FROM STA. 3+18.73 TO STA. 6+68.73, 1.25 FEET NORTHWESTERLY
 APPROVED: *Orville E. McCollon*
 OFFICE OF COUNTY ENGINEER, R.E. 419, 15931

Before Any Work is Started on this Project, The Contractor Shall Verify the Existence and Location of the Water Lines and Power Cables Within the Limits of this Project. Call Mr. Pete Royer of DW7-6769 48 hrs before Work is Started.

NOTE:
 The 8" V.C.P. Sewer from Exist. M.H. @ Sta. 0+51.68 on BRADWELL AVENUE (Page 2) to the first M.H. in the Whittier Mobile Country Club @ Sta. 10+51.00 (Page 3A) will be dedicated to the County of Los Angeles as a public sewer. The remainder of the sewer within the mobile home park will be a Private Sewer constructed under this P.C. 7856.



WHITTIER MOBILE COUNTRY CLUB
 INDEX MAP
 P.C. 7856
 Scale: 1" = 600'

NO CONNECTIONS FOR THE DISPOSAL OF INDUSTRIAL WASTES SHALL BE MADE TO SEWERS SHOWN ON THESE DRAWINGS WITHOUT WRITTEN PERMISSION FROM THE CHIEF ENGINEER AND GENERAL MANAGER OF THE COUNTY SANITATION DISTRICTS.

WHITTIER BLDG. DIST. NO. 11.00

- NOTE:
- PROVIDE STAKES ON THE PROPERTY LINE OR PROPERTY LINES PRODUCED AT RIGHT ANGLES TO THE SEWER LINE AT THE CENTER LINE OF EACH MANHOLE.
 - NO REPRESENTATIVE OF THE COUNTY ENGINEER WILL SURVEY OR LAY OUT ANY PORTION OF THE WORK.
 - THE PRIVATE ENGINEER SHALL FURNISH THE COUNTY ENGINEER WITH GRADE SHEETS AND STATIONING FOR ALL HOUSE LATERALS AND "T" BRANCHES AND SHALL PROVIDE STAKES FOR THEM AT THEIR PROPER LOCATIONS WITH STATIONING PLAINLY MARKED. ALL HOUSE LATERALS SHALL BE CONSTRUCTED IN A STRAIGHT ALIGNMENT AT RIGHT ANGLES FROM THE MAIN LINE SEWER EXCEPT AS SHOWN ON THE PLANS. HOUSE LATERALS FROM CHIMNEYS SHALL NOT HAVE AN ANGLE OF LESS THAN 45° WITH THE MAIN LINE SEWER. ANY CHANGE IN ALIGNMENT SHALL BE REQUESTED IN WRITING BY THE PRIVATE ENGINEER.
 - THE PRIVATE ENGINEER SHALL FURNISH THE HOUSE LATERAL DEPTH AT THE PROPERTY LINE BELOW THE TOP OF CURB ELEVATION FOR EACH HOUSE LATERAL ON THE GRADE SHEET.
 - NO REVISIONS SHALL BE MADE IN THESE PLANS WITHOUT THE APPROVAL OF THE COUNTY ENGINEER.
 - THE CONTRACTOR SHALL NOTIFY THE CONSTRUCTION DIVISION BY TELEPHONE, MAINSON 9-4747, EXT. 8158, AT LEAST TWENTY-FOUR HOURS BEFORE STARTING ANY WORK UNDER THIS CONTRACT.
 - MANHOLES SHALL BE CONSTRUCTED AS SHOWN ON PLAN.
 - USE STANDARD MANHOLE FRAMES AND COVERS, 61-1, EXCEPT AS NOTED.
 - MANHOLE TOPS IN UNIMPROVED RIGHTS-OF-WAY TO BE TWO INCHES ABOVE FINISHED GRADE.
 - USE EXTRA STRENGTH PIPE. ALL PIPE IS STANDARD DEPTH.
 - USE MECHANICAL COMPRESSION JOINTS FOR ALL V.C.P. JOINTS PER SPEC'S, SECS. 36, 48 & 49.
 - IF A POWER POLE IS WITHIN THREE FEET OF THE SEWER, THE SEWER SHALL BE ENCASED, PER 8-23, TWO FEET ON EACH SIDE FROM THE POINT OF INTERFERENCE.
 - IF DURING THE COURSE OF CONSTRUCTION IT IS DETERMINED THAT THERE IS LESS THAN FOUR FEET OF COVER OVER THE TOP OF A MAIN LINE OR HOUSE LATERAL V.C.P. SEWER WHICH IS NOT INDICATED ON THE PLANS, THE PIPE SHALL BE ENCASED PER 8-23, UNLESS OTHERWISE APPROVED BY THE COUNTY ENGINEER.
 - RESURFACE ALL TRENCHES WITHIN PAVED AREAS TO MEET L.A. COUNTY ROAD DEPT. OR CALIFORNIA STATE HIGHWAY REQUIREMENTS IN ACCORDANCE WITH PERMITS.
 - FOR ALLOWABLE LOADS REFER TO FORMULA NO. 8, SPEC'S, SEC. 54.
 - ALL STATE AND LOCAL TRENCH SAFETY ORDERS WILL BE STRICTLY ENFORCED.
 - ALL C.I.P. SHALL BE CLASS 90 OR BETTER.
 - ALL C.I.P. JOINTS SHALL BE MECHANICAL JOINTS PER SPEC'S, SEC. 36, 48, & 49. "TYTON" JOINTS ARE ACCEPTABLE.
 - ALL JOINTS BETWEEN V.C.P. & C.I.P. SHALL BE MADE WITH A RUBBER SLAVE (WITH HOOPS IF NECESSARY) PER SPEC'S, SEC. 36 OR APPROVED EQUAL.
 - "T" branches may be used instead of Yees in all locations.
 - CONSTRUCTION PERMIT WILL NOT BE ISSUED UNTIL SUCH TIME AS AN ENCROACHMENT PERMIT IS OBTAINED FROM THE CALIF. STATE DIVISION OF HIGHWAYS. ALL WORK DONE WITHIN STATE RIGHT OF WAY SHALL BE DONE IN ACCORDANCE WITH SAID PERMIT.

COLLECT CHARGES AS INDICATED
5/16/67

REVISION: *Robt A. Moore*
 INDUSTRIAL WASTE DIVISION

PROFILE, ALIGNMENT AND GRADE OF
 SANITARY SEWERS PAGE 1

WHITTIER MOBILE COUNTRY CLUB
 (PUBLIC SEWER PAGES 2 AND 3A)
 (PRIVATE SEWER PAGES 3B THRU 10)

PRIVATE CONTRACT NO. 7856

W.S. 36
 5 SHEETS, 10 PAGES
 39765

SCALE: HORIZ. 1" = 100' VERT. 1" = 4'

PREPARED IN THE OFFICES OF
 KEMMERER ENGINEERING CO., INC.
 678 S. BAUNTER AVENUE • 898-0791 • WHITTIER, CALIF.
 BY: *Robert R. Filawa*
 REG. C.E. NO. 12342

FOR LEGEND SEE PLAN NO. S-1

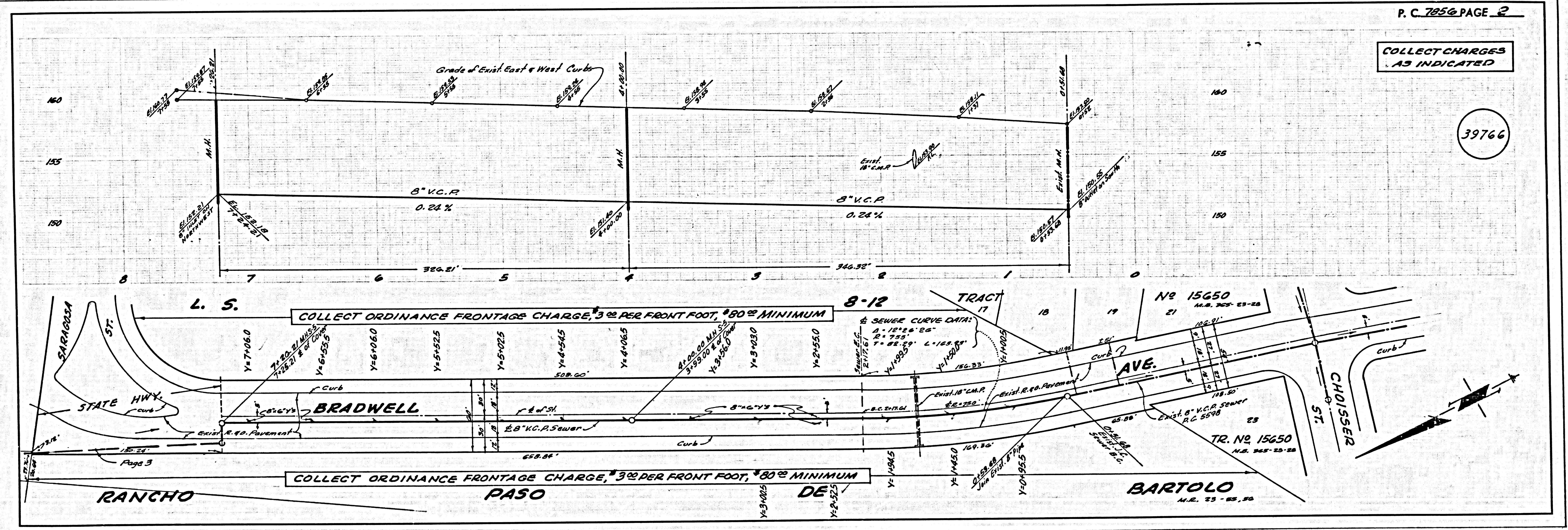
NOTE:
 GRADES TO WHICH THIS IMPROVEMENT IS TO BE CONSTRUCTED ARE SHOWN ON PLANS AND PROFILES. GRADE POINTS FOR TOP OF CURBS, CENTER LINE OF STREETS, OR CENTER LINE OF ALLEYS ARE SHOWN BY CIRCLES ON PROFILES. IF ALL POINTS BETWEEN DESIGNATED POINTS THE GRADE SHALL BE ESTABLISHED SO AS TO CONFORM TO A STRAIGHT LINE DRAWN BETWEEN SAID DESIGNATED POINTS. ELEVATIONS ARE IN FEET ABOVE U.S.C. & G.S. MEAN LEVEL DATUM OF 1929. THE DRAWINGS AND THE DATA HEREON ARE HEREBY MADE A PART OF THE SPECIFICATIONS. IF AMENDMENTS TO THE SPECIFICATIONS ARE MADE BY THE COUNTY ENGINEER, THE CONTRACTOR SHALL BE RESPONSIBLE FOR OBTAINING THE NECESSARY PERMITS FROM THE L.A. COUNTY ROAD DEPT., DISTRICT OFFICE NO. 11, AND PAY A FEE TO THE COUNTY ENGINEER, ROOM 380, COUNTY ENGINEERING BUILDING, 100 WEST SECOND STREET OR ACCORD TO THE LOCAL OFFICE, DISTRICT OFFICE NO. 11, TO COVER THE COST OF CONSTRUCTION INSPECTION AND RECORD PLANS. APPROVAL OF THIS PLAN BY THE COUNTY OF LOS ANGELES DOES NOT CONSTITUTE A REPRESENTATION AS TO THE ACCURACY OF THE LOCATION OR OF THE EXISTENCE OR NON-EXISTENCE OF ANY UNDERGROUND UTILITY PIPE, OR STRUCTURE WITHIN THE LIMITS OF THIS PROJECT. THIS NOTE APPLIES TO ALL PAGES. IF WORK IS TO BE DONE IN A STATE HIGHWAY, A PERMIT MUST BE OBTAINED FROM THE STATE OF CALIFORNIA, DIVISION OF HIGHWAYS, 120 SOUTH SPRING STREET, LOS ANGELES, CALIFORNIA.

COUNTY OF LOS ANGELES, CALIFORNIA
 JOHN A. LAMBIE, COUNTY ENGINEER J. D. PARKHURST, CHIEF ENGINEER
 CO. SAN. DIST. NO. 11

APPROVED BY: *Robert R. Filawa* ASSISTANT SANITATION ENGINEER
 APPROVED BY: *J. D. Parkhurst* CHIEF ENGINEER

SUBMITTED BY: *Robert R. Filawa* 10327
 10327
 CHECKED BY: *Orville E. McCollon*
 REG. C.E. NO. 15931

J.N. 0368.47

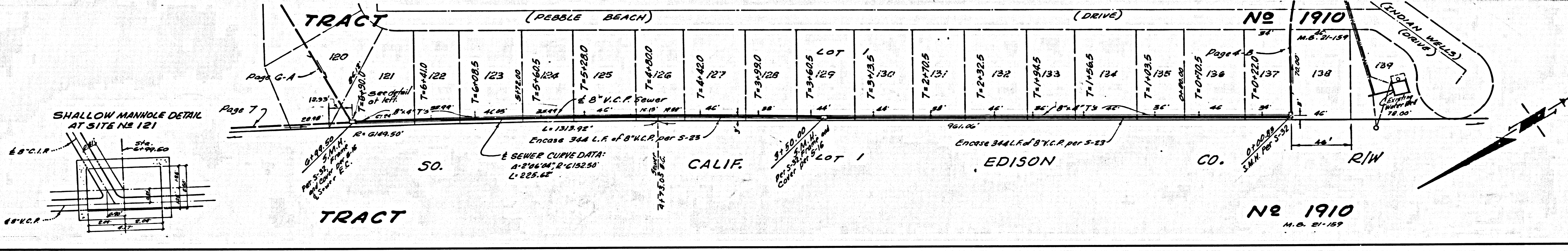
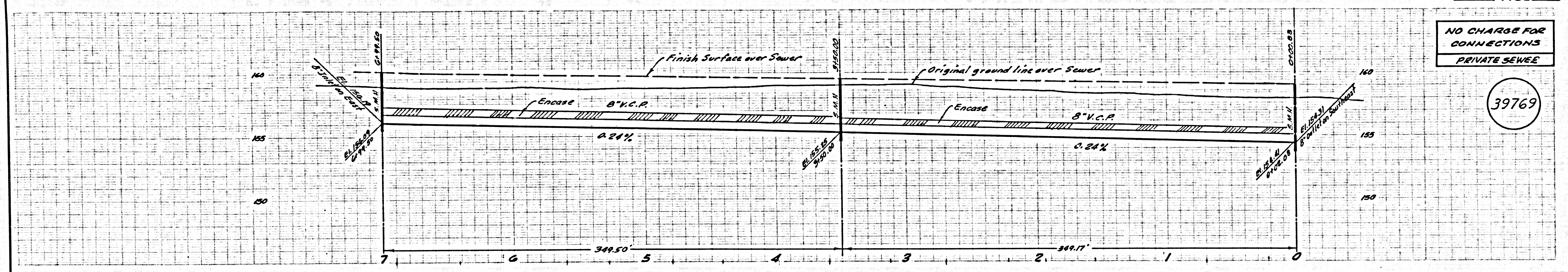


COLLECT CHARGES AS INDICATED

39766

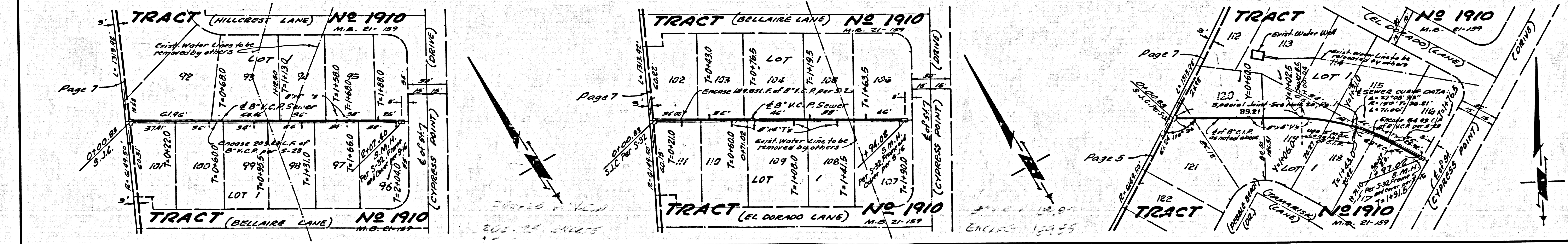
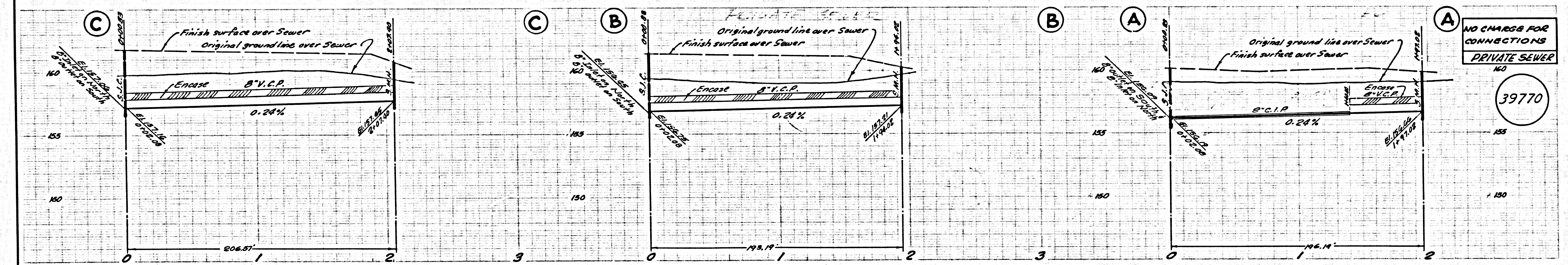
NO CHARGE FOR CONNECTIONS
PRIVATE SEWER

39769



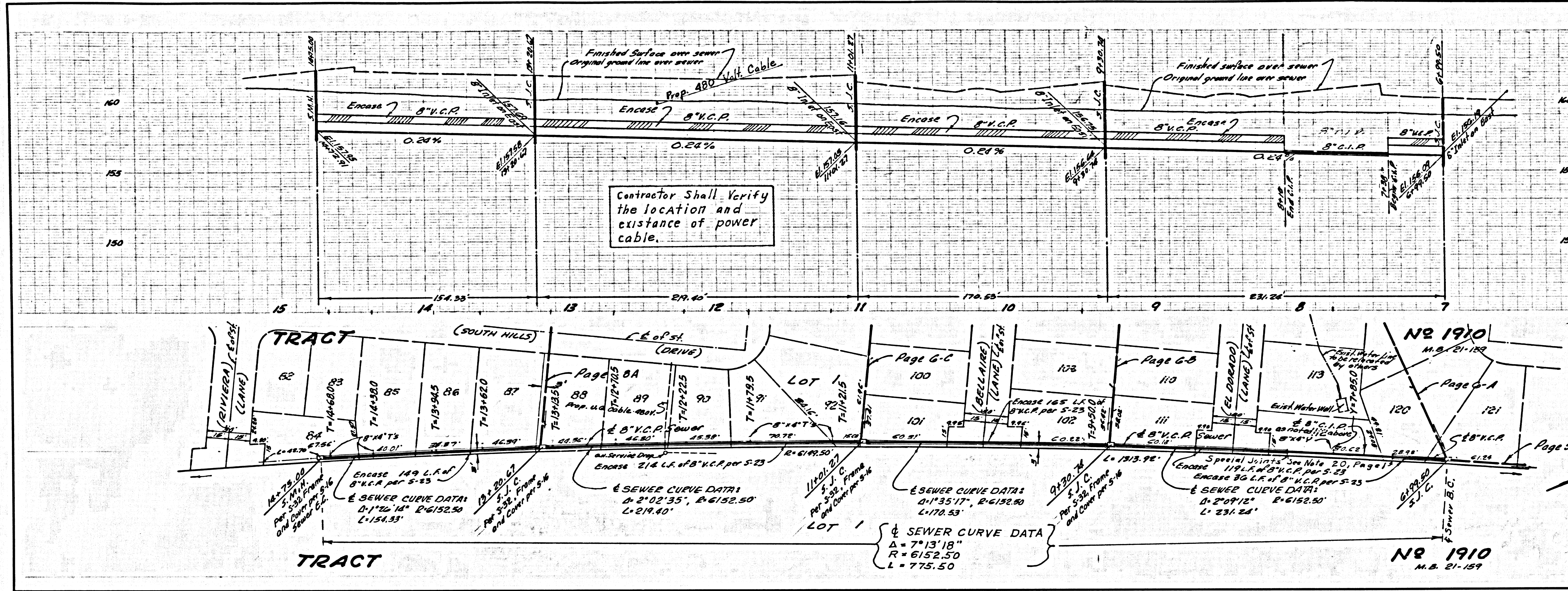
NO CHARGE FOR CONNECTIONS
PRIVATE SEWER

39770



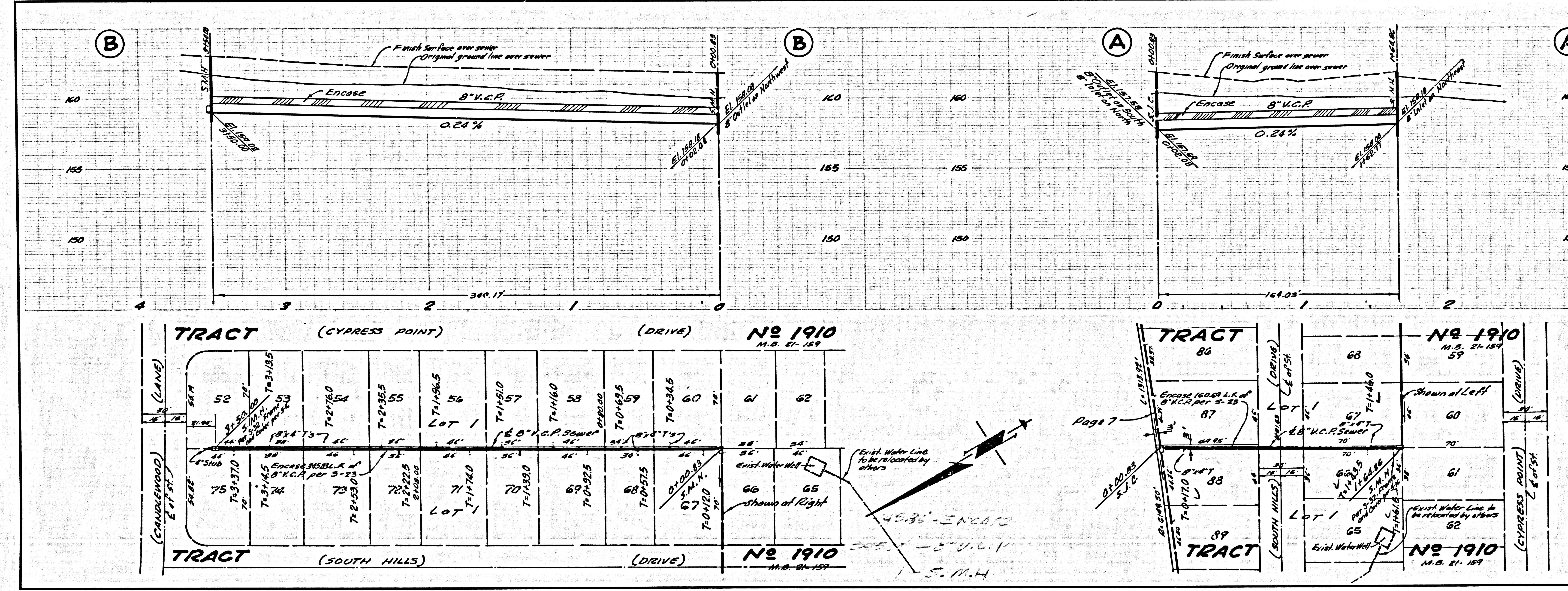
NO CHARGE FOR CONNECTIONS
PRIVATE SEWER

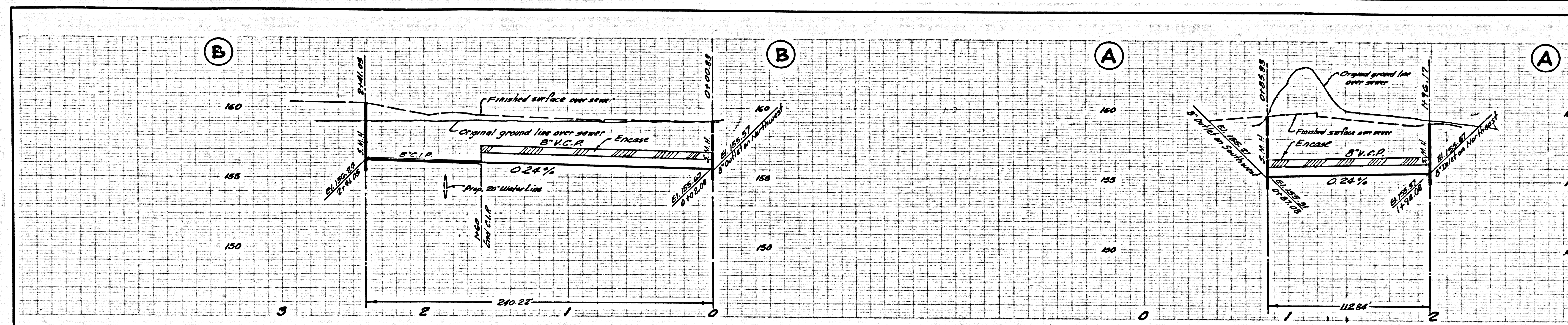
39771



NO CHARGE FOR CONNECTIONS
PRIVATE SEWER

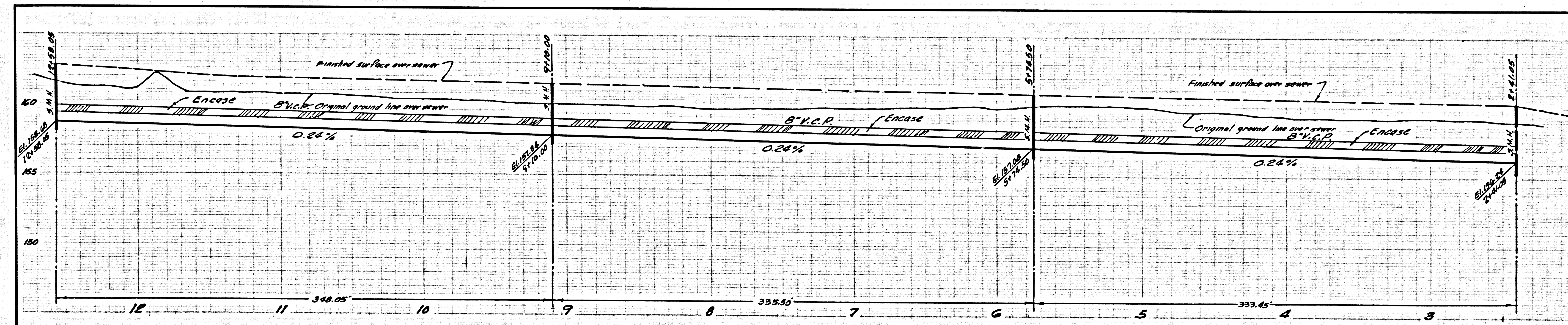
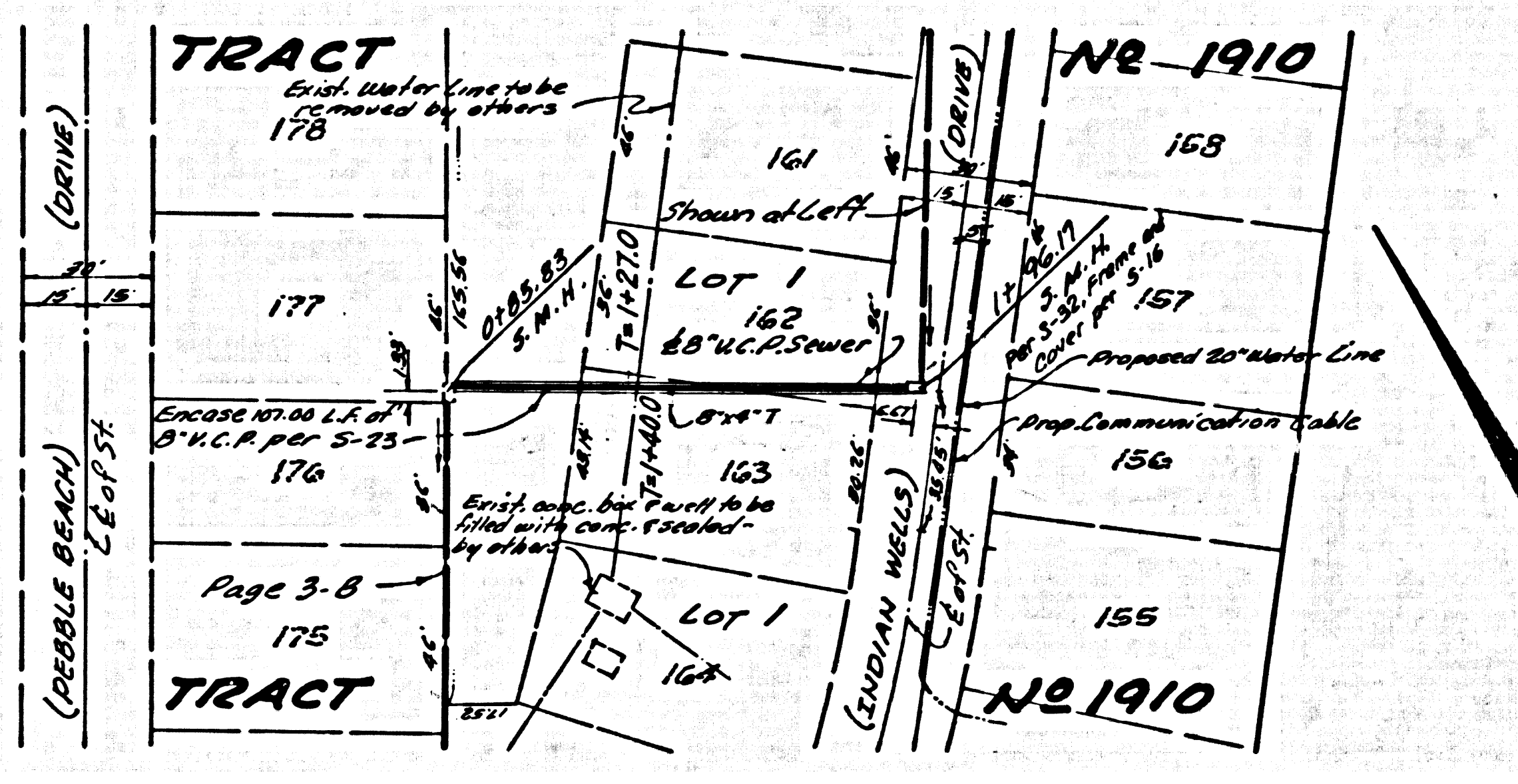
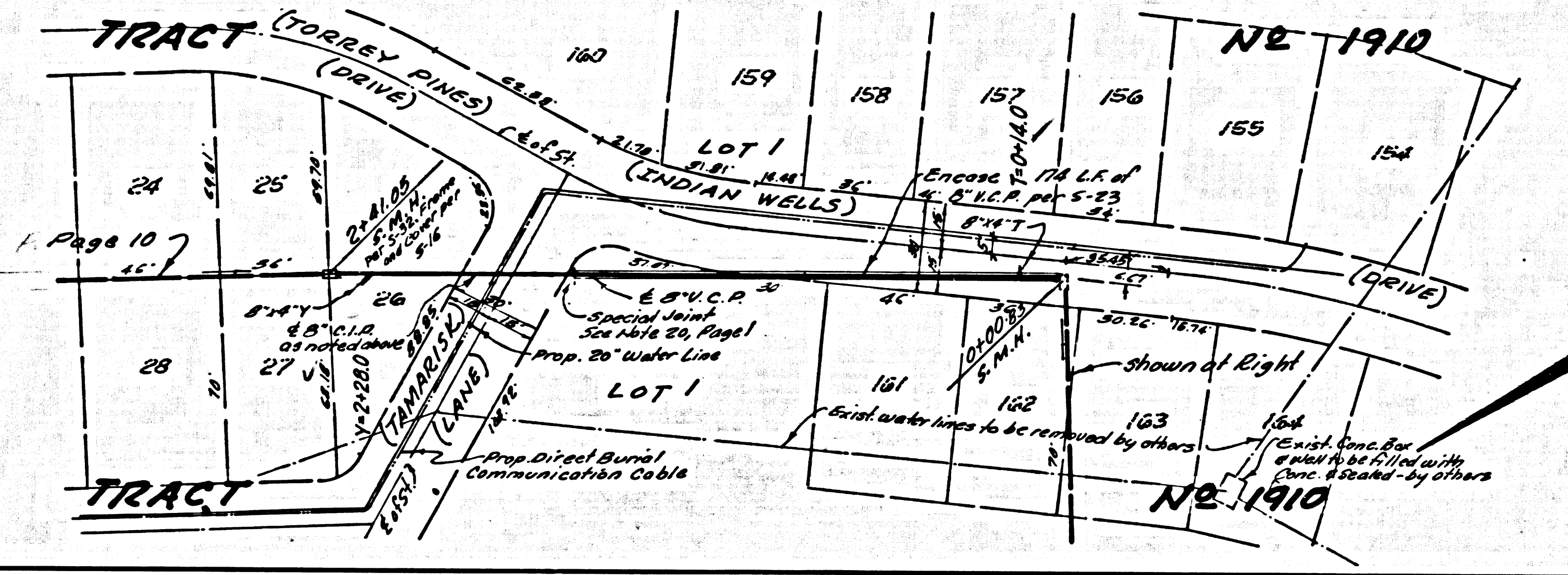
39772





NO CHARGE FOR CONNECTIONS PRIVATE SEWER

39773



NO CHARGE FOR CONNECTIONS PRIVATE SEWER

39774

