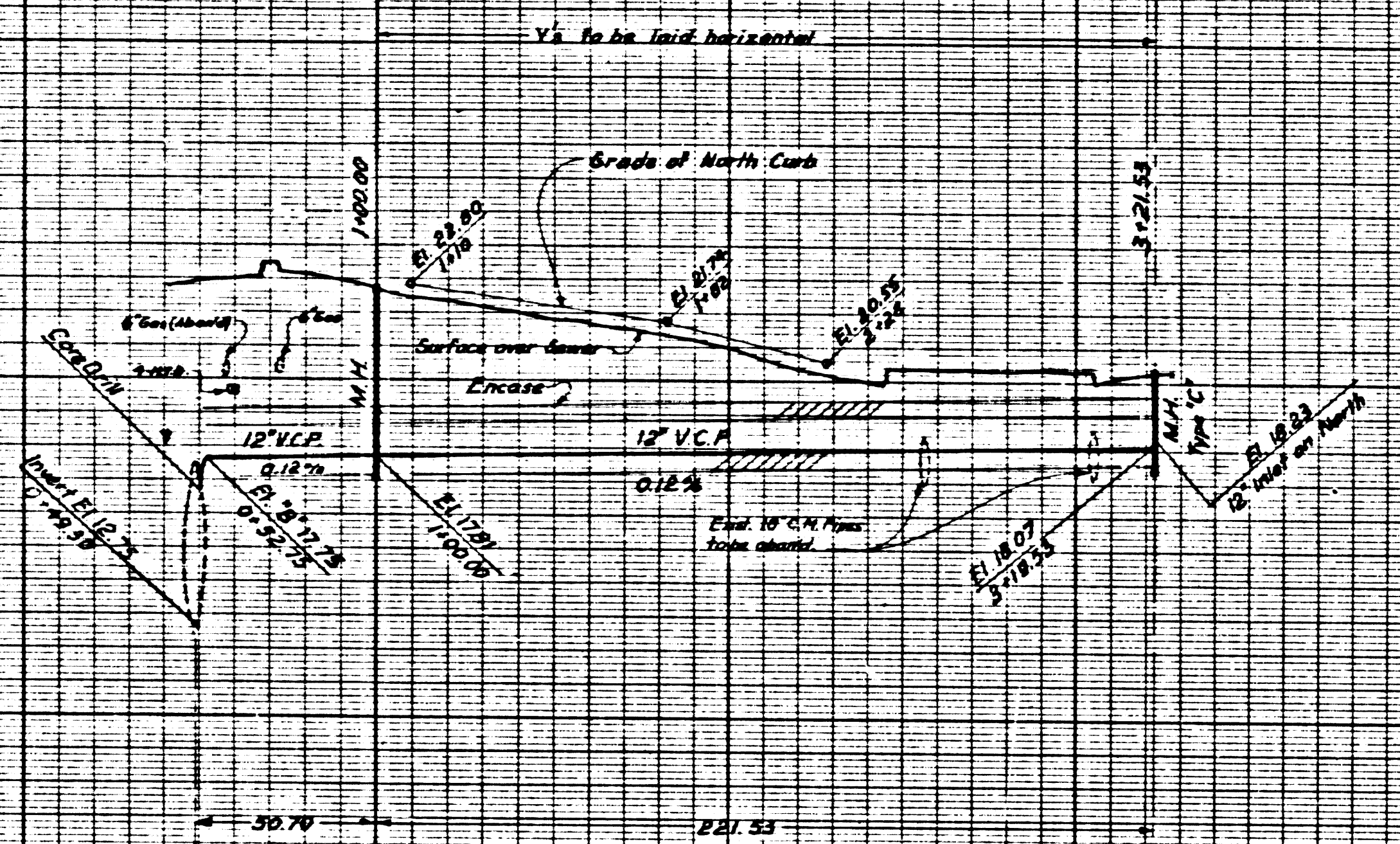


SCALE
 HORIZ. 1"=40'
 VERT. 1"=4'

B.M. SY 5811 EL. 20.456 F.B. 3309-7
 INT. SEPULVEDA BLVD. & FIGUEROA ST.
 STD. L.A.C.E. BR. CP. MON. IN HAND HOLE.

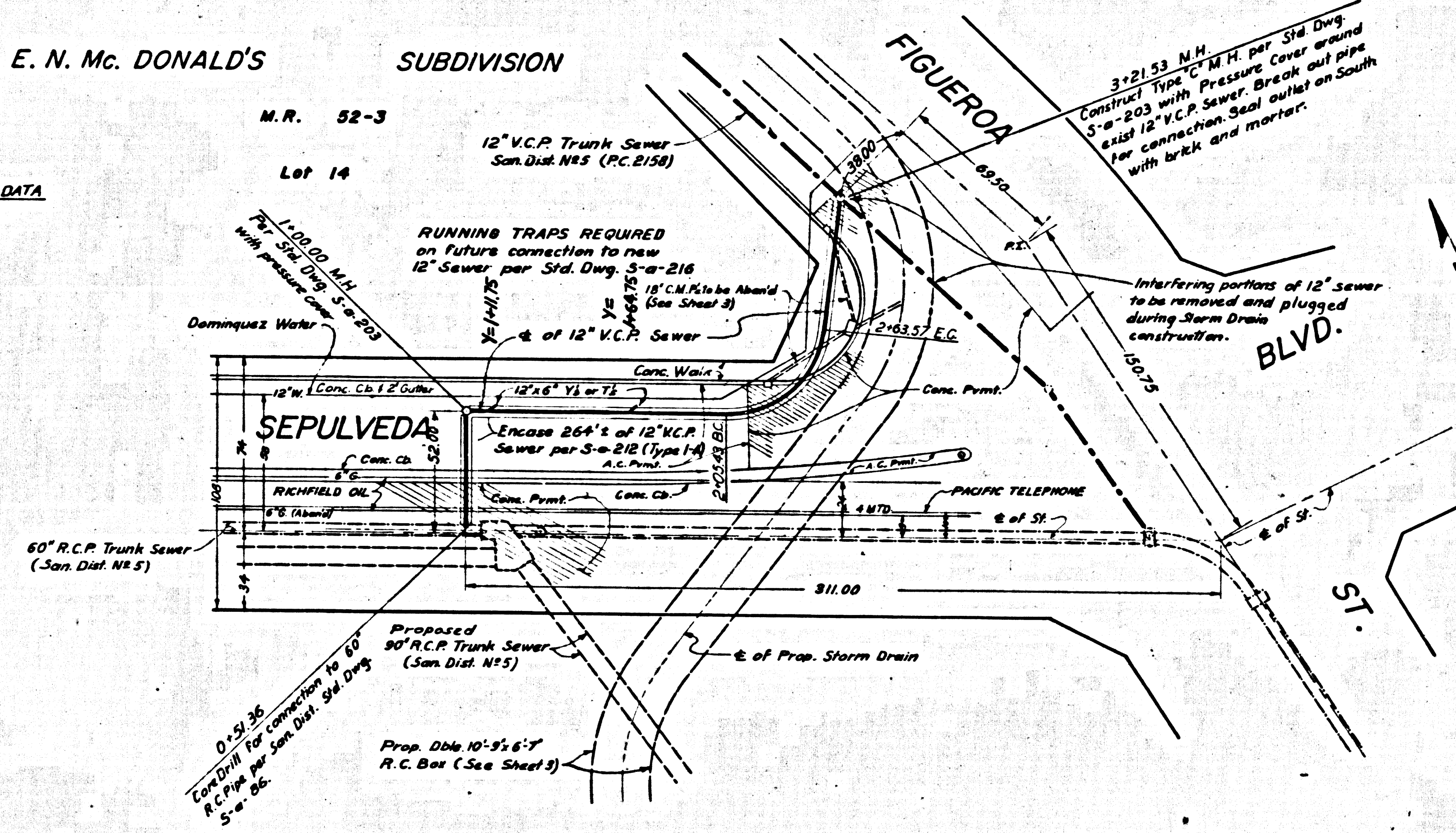


NOTES:

1. All work for the construction of sanitary sewers and appurtenant structures shall be done in accordance with the Standard Specifications for The Construction of Sewers and Appurtenances of Los Angeles County Sanitation Districts.
2. Manholes shall be brick sewer structures per S-a-203.
3. Use manhole frames and covers per S-a-208, except as noted. Covers shall read C.S.D. No. 8.
4. Contractor shall notify Sanitation Districts (384-128) at least 48 hours before starting any work on this construction.
5. V.C.P. shall be extra strength pipe with mechanical compression joint.
6. Horizontal curves shall be constructed using beveled pipe which has a maximum level of 4" on the spot and no one joint shall have a deflection greater than 6". The pipe used to construct the horizontal curves shall be factory fabricated to centerline radius shown on the drawing.
7. Core drilling and placing of brick bulkhead shall be done during low flow period.

E. N. Mc. DONALD'S SUBDIVISION

SEWER CURVE DATA
 $\Delta = 63^{\circ}16'59''$
 $R = 40.00'$
 $L = 38.14'$
 $T = 35.57'$



County Sanitation Districts shall be notified prior to the following so that required inspection can be made (Phone 384-8888 - 634-3097)

Core Drilling District trunk sewer.
 Commencement of construction of manhole on District trunk sewer.
 Acceptance of the project.

NO CONNECTIONS FOR THE DISPOSAL OF INDUSTRIAL WASTES SHALL BE MADE TO SEWERS SHOWN ON THESE DRAWINGS WITHOUT WRITTEN PERMISSION FROM THE CHIEF ENGINEER AND GENERAL MANAGER OF THE COUNTY SANITATION DISTRICTS.

41764

1964 STORM DRAIN BOND ISSUE
 LOS ANGELES COUNTY
 FLOOD CONTROL DISTRICT

REVISIONS			
MARK	DATE	DESCRIPTION	

CAR 104

APPROVED
 JOHN D. PARKHURST
 CHIEF ENGINEER
 CO. SAN. DIST. NPS

PREPARED BY
 JOHN A. LAMBIE
 COUNTY ENGINEER
 P.C. 7858
 RECOMMENDED BY
 Richard M. Coon, 10-3-48
 ASST. DIVISION ENGINEER - SANITATION DISTRICTS

STA.	TO STA.
PLAN AND PROFILE	
RECOMMENDED BY	APPROVAL RECOMMENDED BY
APPROVED BY	ASST. CHIEF DEPUTY ENGINEER
DESIGNED BY	CHIEF ENGINEER

SCALE
 HORIZ. 1"=40'
 VERT. 1"=4'

DATE
 DWG. NO.
 SHEET 1 OF