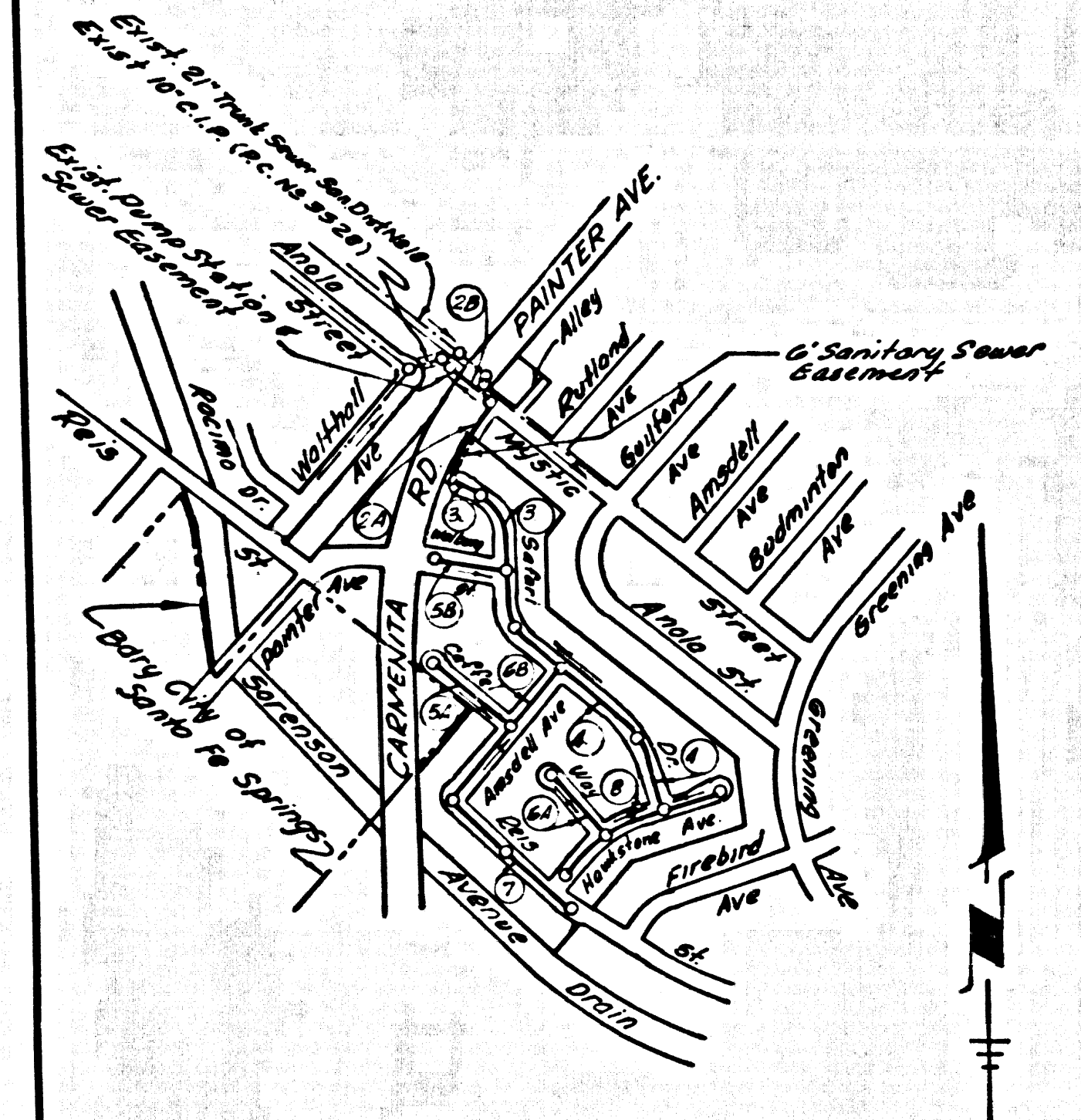


B.M. B.Y. 0284 ELEV. 140.488
 R.D. B.M. 709 E. CB. 36 ft. N. of
 Bridge No 7908 20 ft. E. C/L
 Painter Ave 1000 ft. So. Mystic Ave
 SANTA FE QUAD. 19 @ 5

PRIVATE ENGINEERS NOTICE TO CONTRACTOR

THE EXISTENCE AND APPROXIMATE LOCATION OF UNDERGROUND UTILITIES OR STRUCTURES SHOWN ON THESE PLANS WERE DETERMINED BY A SEARCH OF THE AVAILABLE PUBLIC RECORDS. TO THE BEST OF OUR KNOWLEDGE, THERE ARE NO EXISTING UNDERGROUND UTILITIES OR STRUCTURES EXCEPT AS SHOWN ON THESE PLANS. THE CONTRACTOR IS REQUIRED TO TAKE DUE PRECAUTIONARY MEASURES TO PROTECT THE UTILITIES OR STRUCTURES NOT OF RECORD OR NOT SHOWN ON THESE PLANS.

Robert R. Flores 4-4-1967
 R.C.E. 11349 DATE



INDEX MAP
 TRACT No 28271
 R.C. 7861
 SCALE: 1" = 600'

REVISION No 1
 REVISED GRADES AND ELEVATIONS
 FROM STATION 0+27.06 TO STATION 1+72.00
 ON PAGE 2 B.
Robert R. Flores 7-17-67
 R.C.E. No 11349 DATE
 APPROVED BY: *Charles E. McCall* R.C.E. 5731
 OFFICE OF THE COUNTY ENGINEER 7/17/67

WHITTIER BLDG. DIST. NO. 11.00

- PROVIDE STAKE ON THE PROPERTY LINE OR PROPERTY LINES PRODUCED AT RIGHT ANGLES TO THE SEWER LINE AT THE CENTER LINE OF EACH MANHOLE.
- NO REPRESENTATIVE OF THE COUNTY ENGINEER WILL SURVEY OR LAY OUT ANY PORTION OF THE WORK.
- THE PRIVATE ENGINEER SHALL FURNISH THE COUNTY ENGINEER WITH GRADE SHEETS AND STATIONING FOR ALL HOUSE LATERALS AND "T" BRANCHES AND SHALL PROVIDE STAKES FOR THEM AT THEIR PROPER LOCATIONS WITH STATIONING PLAINLY MARKED. ALL HOUSE LATERALS SHALL BE CONSTRUCTED IN A STRAIGHT ALIGNMENT AT RIGHT ANGLES FROM THE MAIN LINE SEWER EXCEPT AS SHOWN ON THE PLANS. HOUSE LATERALS FROM CHIMNEYS SHALL NOT HAVE AN ANGLE OF LESS THAN 45° WITH THE MAIN LINE SEWER. ANY CHANGE IN ALIGNMENT SHALL BE REQUESTED IN WRITING BY THE PRIVATE ENGINEER.
- THE PRIVATE ENGINEER SHALL FURNISH THE HOUSE LATERAL DEPTH AT THE PROPERTY LINE BELOW THE TOP OF CURB ELEVATION FOR EACH HOUSE LATERAL ON THE GRADE SHEET.
- NO REVISIONS SHALL BE MADE IN THESE PLANS WITHOUT THE APPROVAL OF THE COUNTY ENGINEER.
- THE CONTRACTOR SHALL NOTIFY THE CONSTRUCTION DIVISION BY TELEPHONE, MADISON 9-4747, EXT. 8158, AT LEAST TWENTY-FOUR HOURS BEFORE STARTING ANY WORK UNDER THIS CONTRACT.
- ALL STRUCTURES SHALL BE BUILT TO THE SPECIFICATIONS PER S-3 OR PRECAST CONCRETE MANHOLES PER S-5 OR S-6 EXCEPT AS NOTED.
- USE STANDARD MANHOLE FRAMES AND COVERS, S-1.
- MANHOLE TOPS TO BE AT FINISHED GRADE.
- USE EXTRA STRENGTH PIPE. ALL PIPE IS STANDARD DEPTH EXCEPT AS NOTED.
- USE MECHANICAL COMPRESSION JOINTS FOR ALL V.C.P. JOINTS PER SPEC., SECS. 84, 85 & 87.
- IF A POWER POLE IS WITHIN THREE FEET OF THE SEWER, THE SEWER SHALL BE ENCASED, PER S-23, TWO FEET ON EACH SIDE FROM THE POINT OF INTERFERENCE.
- IF DURING THE COURSE OF CONSTRUCTION IT IS DETERMINED THAT THERE IS LESS THAN FOUR FEET OF COVER OVER THE TOP OF A MAIN LINE OR HOUSE LATERAL V.C.P. SEWER WHICH IS NOT INDICATED ON THE PLANS, THE PIPE SHALL BE ENCASED PER S-23, UNLESS OTHERWISE APPROVED BY THE COUNTY ENGINEER.
- HOUSE LATERALS TO BE CONSTRUCTED WITH INVERTS AT PROPERTY LINE A FEET BELOW CURB GRADE EXCEPT AS NOTED.
- RESURFACE ALL TRENCHES WITHIN PAVED AREAS TO MEET L.A. COUNTY ROAD DEPT. OR CALIFORNIA STATE HIGHWAY REQUIREMENTS IN ACCORDANCE WITH PERMITS.
- FOR ALLOWABLE LEAKAGE TEST USE FORMULA NO. 3, SPEC. SEC. 54.
- ALL STATE AND LOCAL TRENCH SAFETY ORDERS WILL BE STRICTLY ENFORCED.
- ALL JOINTS BETWEEN CAST IRON PIPE AND VITRIFIED CLAY PIPE SHALL BE MADE WITH A RUBBER SLAB JOINT (WITH ADAP IF NECESSARY) PER STANDARD SPECIFICATIONS SEC. 33 OR APPROVED EQUAL.
- ALL C.L.P. JOINTS SHALL BE MECHANICAL SLIP JOINTS OF THE "TYTON" TYPE OR APPROVED EQUAL PER SPEC. SEC. 33 & 34.

PROFILE, ALIGNMENT AND GRADE OF **P.C. 7861**
SANITARY SEWERS PAGE 1
 TO BE CONSTRUCTED IN

TRACT No 28271
PRIVATE CONTRACT NO. 7861

W.S. 34
 4 SHEETS, 2 PAGES
 39362
 SCALE: HORIZ. 1" = 100' VERT. 1" = 10'
 MARCH, 1967
 PREPARED IN THE OFFICES OF
KEMMEER ENGINEERING CO., INC.
 6705 So. Painter Avenue, Whittier, California
 BY: *Robert R. Flores*
 REG. C. E. NO. 11349

FOR LEGEND SEE PLAN NO. S-1

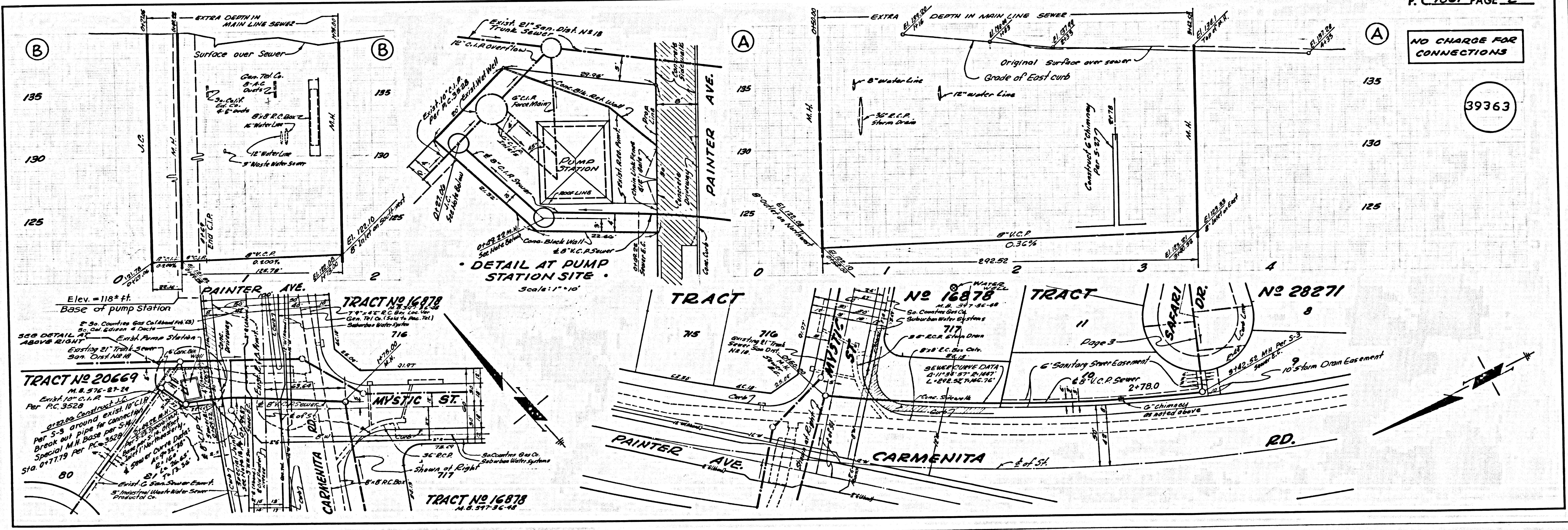
NOTES:
 GRADES TO WHICH THIS IMPROVEMENT IS TO BE CONSTRUCTED ARE SHOWN ON PLANS AND PROFILE. GRADE POINTS FOR TOP OF CURB, CENTER LINE OF STREETS, OR CENTER LINE OF ALLEYS ARE SHOWN BY CIRCLES ON PROFILES. AT ALL POINTS BETWEEN DESIGNATED POINTS THE GRADE SHALL BE ESTABLISHED SO AS TO CONFORM TO A STRAIGHT LINE DRAWN BETWEEN SAID DESIGNATED POINTS. ELEVATIONS ARE IN FEET ABOVE U.S.C. & G.S. SEA LEVEL DATUM OF 1929.
 THE DRAWINGS AND THE DATA HEREON ARE HEREBY MADE A PART OF THE SPECIFICATIONS. NO WORK SHALL BE DONE UNLESS THE CONTRACTOR OBTAINS A PERMIT TO EXCAVATE IN COUNTY STREETS FROM THE L.A. COUNTY ENGINEER AND SHALL BE PROSECUTED ONLY IN THE PRESENCE OF THE COUNTY ENGINEER.
 BEFORE WORK CAN BE STARTED, THE CONTRACTOR MUST OBTAIN A PERMIT TO EXCAVATE IN COUNTY STREETS FROM THE L.A. COUNTY ROAD DEPT., DISTRICT OFFICE NO. 11, AND PAY A FEE TO THE COUNTY ENGINEER, ROOM 328, COUNTY ENGINEERING BUILDING, 100 WEST BROADWAY STREET, LOS ANGELES, CALIFORNIA.
 CONSTRUCTION OF THIS PLAN BY THE COUNTY OF LOS ANGELES DOES NOT CONSTITUTE A REPRESENTATION AS TO THE ACCURACY OF THE LOCATION OR OF THE EXISTENCE OR NON-EXISTENCE OF ANY UNDERGROUND UTILITY PIPE, OR STRUCTURE WITHIN THE LIMITS OF THE PROJECT. THIS NOTE APPLIES TO ALL PAGES.
 IF WORK IS TO BE DONE IN A STATE HIGHWAY, A PERMIT MUST BE OBTAINED FROM THE STATE OF CALIFORNIA, DIVISION OF HIGHWAYS, 220 SOUTH BRUNN STREET, LOS ANGELES, CALIFORNIA.

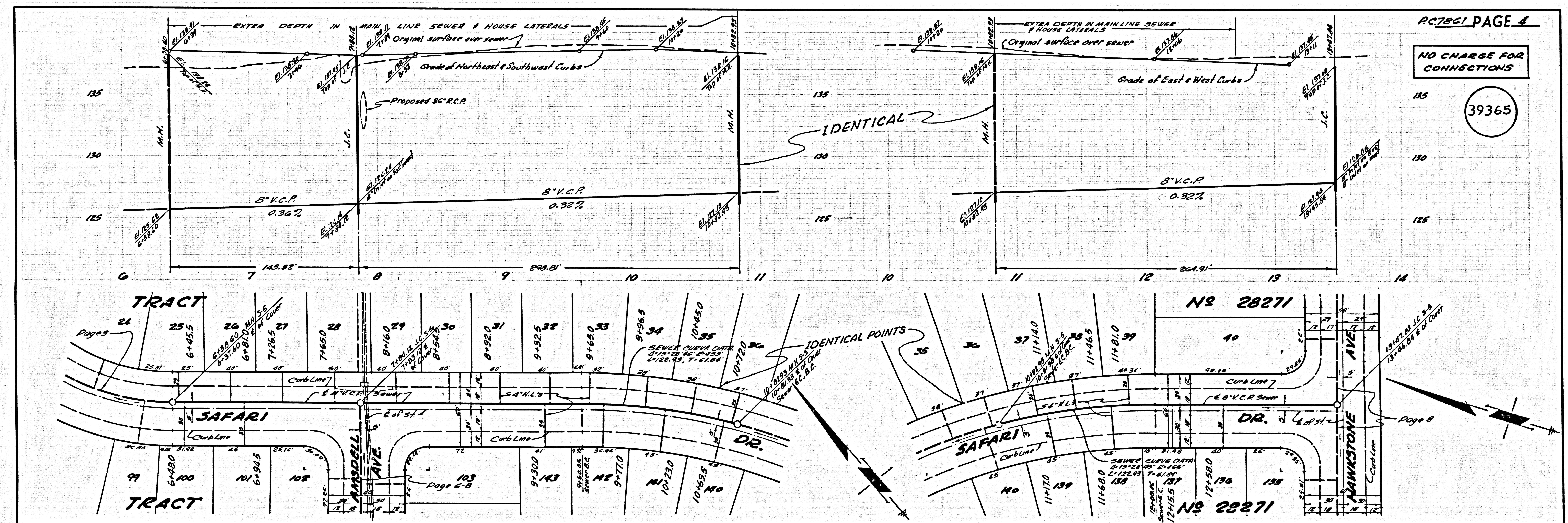
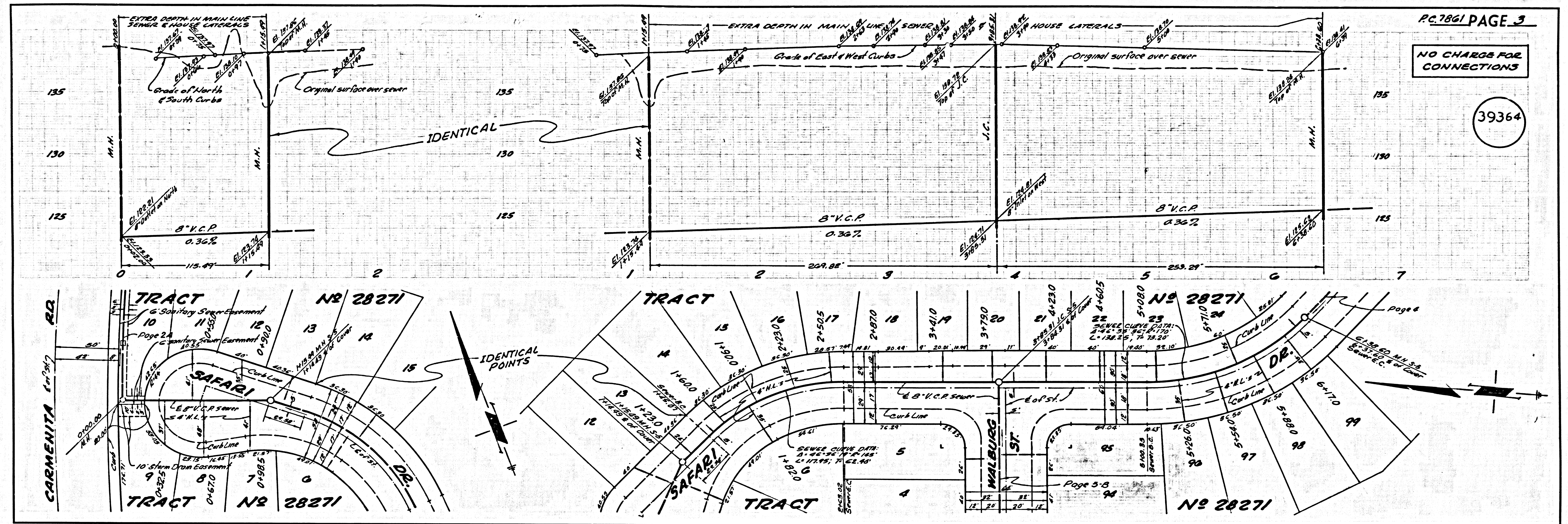
COUNTY OF LOS ANGELES, CALIFORNIA
 JOHN A. LAMBIE, COUNTY ENGINEER J. D. PARKHURST, CHIEF ENGINEER
 CO. SAN. DIST. NO. 11
 APPROVED BY: *Robert M. Crow* ASSISTANT SANITATION ENGINEER APPROVED BY: *Ed. J. Williams* CHIEF ENGINEER
 SUBMITTED BY: *Robert R. Flores* REG. C.E. NO. 11349 APPROVED BY: *Ed. J. Williams* CHIEF ENGINEER
 CHECKED BY: *Charles E. McCall* R.C.E. NO. 5731 APPROVED BY: *Ed. J. Williams* CHIEF ENGINEER
 REG. C.E. NO. 15231 SEWER MAINTENANCE SUPT.

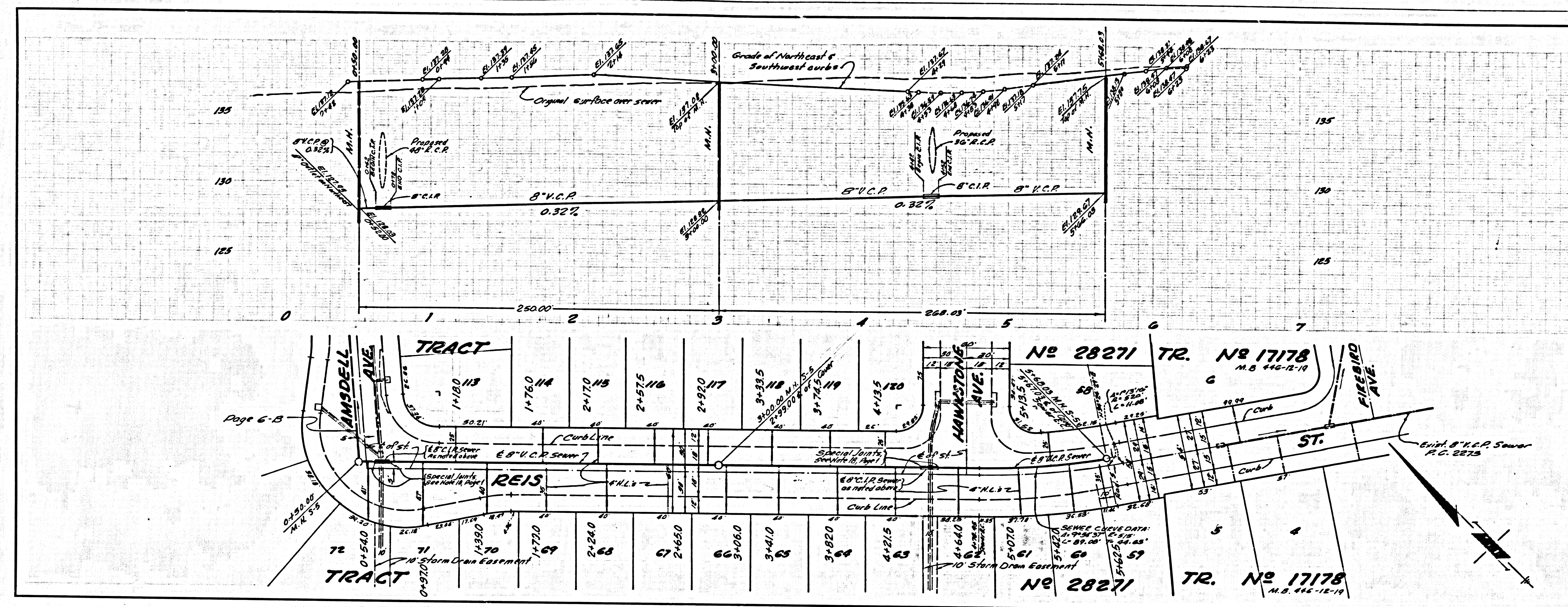
COLLECT CHARGES
 AS INDICATED
Robert R. Flores, April 25, 1967

NO CONNECTIONS FOR THE DISPOSAL OF INDUSTRIAL WASTES SHALL BE MADE TO SEWERS SHOWN ON THESE DRAWINGS WITHOUT WRITTEN PERMISSION FROM THE CHIEF ENGINEER AND GENERAL MANAGER OF THE COUNTY SANITATION DISTRICTS.

J.N. 0250.02



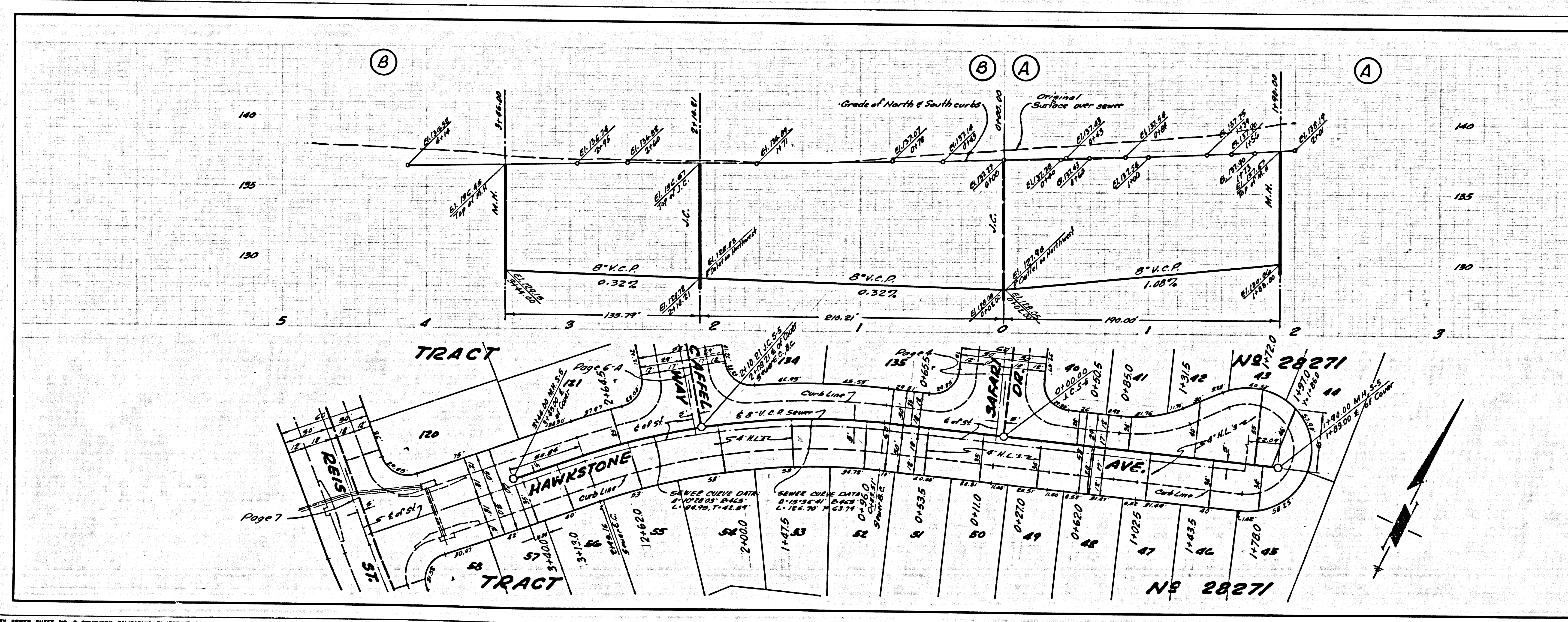




P.C. 7861 PAGE 7

NO CHARGE FOR CONNECTIONS

39368



P.C. 7861 PAGE 8

NO CHARGE FOR CONNECTIONS

39369

