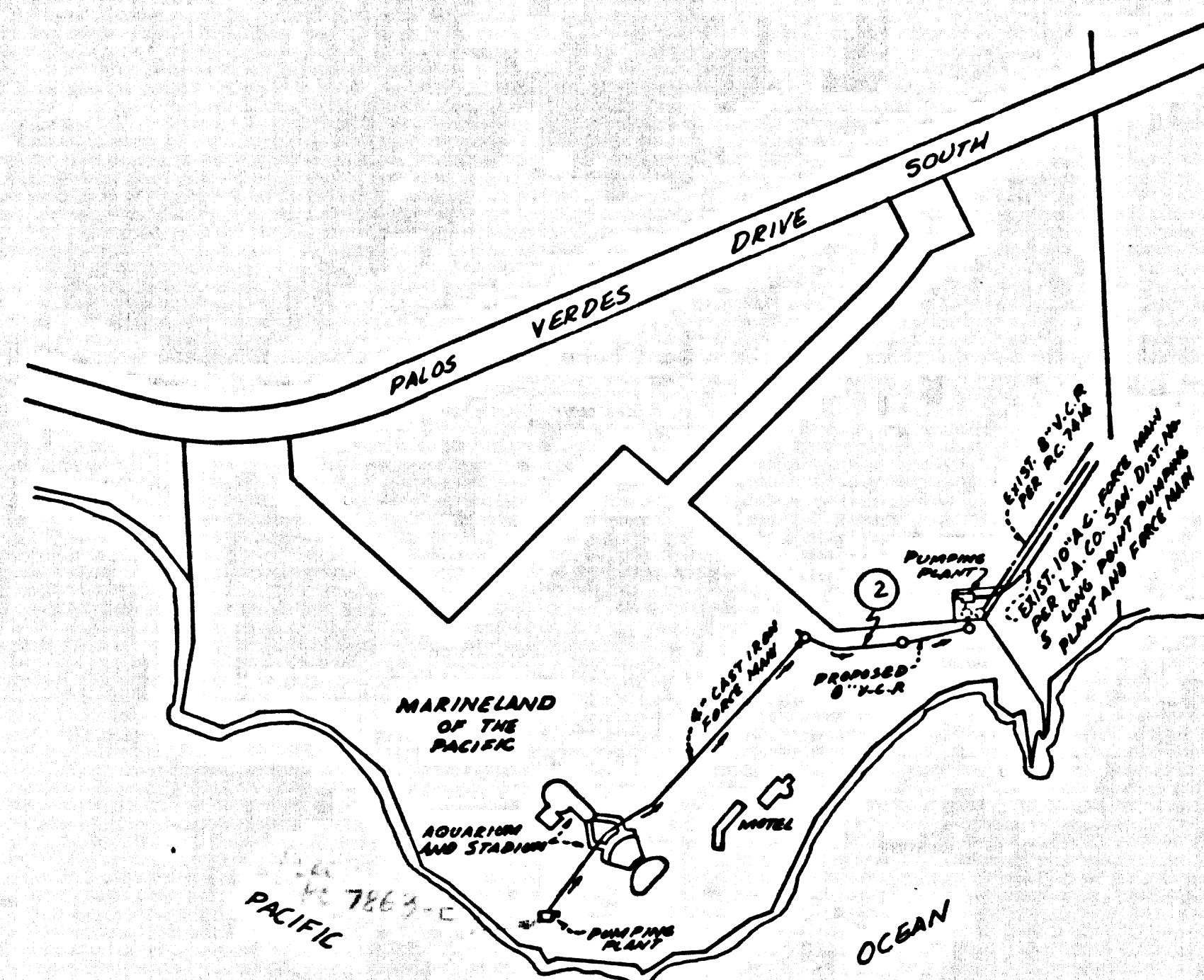


B.M. SY 6074 ELEV. 235.238
 C.S. MON. IN WELL NEAR E. PACKET
 RD. 126' ± S.O. S. PALOS VERDES
 DR. SO. MKD. (B.M. 34-21 1953 R.E. 63)
 PALOS VERDES QUAD. 1960



INDEX MAP
 MARINELAND - LONG POINT
 P.C. 7863
 SCALE: 1" = 600'

REVISION

RELOCATED M.H. AT STA. 16+55.53 TO STA. 16+55.23 ON PAGE 2 AND REALIGNED THE NORTHERLY END OF THE FORCE MAIN, SHOWN ON PAGE 3, TO MEET THE NEW LOCATION OF THE ABOVEMENTIONED M.H.
 APPROVED: *[Signature]* DATE: 7-18-67
 OFFICE OF THE COUNTY ENGINEER

LOMITA BLDG. DIST. NO. 12

NOTES:

1. PROVIDE STAKES ON THE PROPERTY LINE OR PROPERTY LINES PRODUCED AT RIGHT ANGLES TO THE SEWER LINE AT THE CENTER LINE OF EACH MANHOLE.
2. NO REPRESENTATIVE OF THE COUNTY ENGINEER WILL SURVEY OR LAY OUT ANY PORTION OF THE WORK.
3. THE PRIVATE ENGINEER SHALL FURNISH THE COUNTY ENGINEER WITH GRADE SHEETS AND STATIONING FOR ALL HOUSE LATERALS AND 12" MANHOLES AND SHALL PROVIDE STAKES FOR THEM AT THEIR PROPER LOCATIONS WITH STATIONING PLAINLY MARKED. ALL HOUSE LATERALS SHALL BE CONSTRUCTED IN A STRAIGHT ALIGNMENT AT RIGHT ANGLES FROM THE MAIN LINE SEWER EXCEPT AS SHOWN ON THE PLANS. HOUSE LATERALS FROM CHIMNEYS SHALL NOT HAVE AN ANGLE OF LESS THAN 45° WITH THE MAIN LINE SEWER. ANY CHANGE IN ALIGNMENT SHALL BE REQUESTED IN WRITING BY THE PRIVATE ENGINEER.
4. THE PRIVATE ENGINEER SHALL FURNISH THE HOUSE LATERAL DEPTH AT THE PROPERTY LINE BELOW THE TOP OF CURB ELEVATION FOR EACH HOUSE LATERAL ON THE GRADE SHEET.
5. NO REVISIONS SHALL BE MADE IN THESE PLANS WITHOUT THE APPROVAL OF THE COUNTY ENGINEER.
6. THE CONTRACTOR SHALL NOTIFY THE CONSTRUCTION DIVISION BY TELEPHONE, MADISON 9-5747, EXT. 81351, AT LEAST TWENTY-FOUR HOURS BEFORE STARTING ANY WORK UNDER THIS CONTRACT.
7. MANHOLES SHALL BE BRICK SEWER STRUCTURES PER S-5 PRECAST CONCRETE MANHOLES PER S-4 OR S-4 EXCEPT AS NOTED.
8. USE STANDARD MANHOLE FRAMES AND COVERS, S-15, EXCEPT AS NOTED.
9. MANHOLE TOPS IN UNIMPROVED RIGHTS-OF-WAY TO BE SIX INCHES ABOVE FINISHED GRADE.
10. USE EXTRA STRENGTH PIPE, ALL PIPE IS STANDARD DEPTH EXCEPT AS NOTED.
11. USE MECHANICAL COMPRESSION JOINTS FOR ALL V.C.P. JOINTS PER SPEC., SECT. 34, 40 & 41.
12. IF A POWER POLE IS WITHIN THREE FEET OF THE SEWER, THE SEWER SHALL BE ENCASED, PER S-25, TWO FEET ON EACH SIDE FROM THE POINT OF INTERFERENCE.
13. IF DURING THE COURSE OF CONSTRUCTION IT IS DETERMINED THAT THERE IS LESS THAN FOUR FEET OF COVER OVER THE TOP OF A MAIN LINE OR HOUSE LATERAL V.C.P. SEWER WHICH IS NOT INDICATED ON THE PLANS, THE PIPE SHALL BE ENCASED PER S-25, UNLESS OTHERWISE APPROVED BY THE COUNTY ENGINEER.
14. HOUSE LATERALS TO BE CONSTRUCTED WITH INVERTS AT PROPERTY LINE 6 FEET BELOW CURB GRADE EXCEPT AS NOTED.
15. RESURFACE ALL TRENCHES WITHIN PAVED AREAS TO MEET L.A. COUNTY ROAD DEPT. OR CALIFORNIA STATE HIGHWAY REQUIREMENTS IN ACCORDANCE WITH PERMITS.
16. FOR ALLOWABLE LEAKAGE TEST USE FORMULA NO. 2, SPEC. L, SEC. 54.
17. ALL STATE AND LOCAL TRENCH SAFETY ORDERS WILL BE STRICTLY ENFORCED.

NO CONNECTIONS FOR INDUSTRIAL WASTES SHALL BE MADE TO SEWERS SHOWN ON THESE DRAWINGS WITHOUT WRITTEN PERMISSION FROM THE CHIEF ENGINEER AND GENERAL MANAGER OF THE COUNTY SANITATION DISTRICTS.

BEFORE BREAKING INTO ANY EXISTING STRUCTURE AND BEFORE FINAL ACCEPTANCE OF THIS WORK, COUNTY SANITATION DISTRICT (DU 4-1281) SHALL BE NOTIFIED IN ORDER THAT REQUIRED INSPECTION CAN BE MADE.

COLLECT CHARGES AS INDICATED
L. Carter 5/10/67

NOTICE TO CONTRACTOR

The existence and location of any underground utility pipes or structures shown on these plans are obtained by a search of the available records. To the best of my knowledge there are no existing utilities except as shown on these plans. The contractor is required to take due precautionary measures to protect the utility lines shown and any other lines not of record or not shown on these plans.
[Signature]
 P.C.E.

PROFILE, ALIGNMENT AND GRADE OF
 SANITARY SEWERS PAGE 1
 TO BE CONSTRUCTED IN

MARINELAND PRIVATE SEWER
 PRIVATE CONTRACT NO. 7863

W.S. 27
 2 SHEET 3 PAGES

SCALE: VERT. 1" = 10' HORIZ. 1" = 40' APRIL, 1967

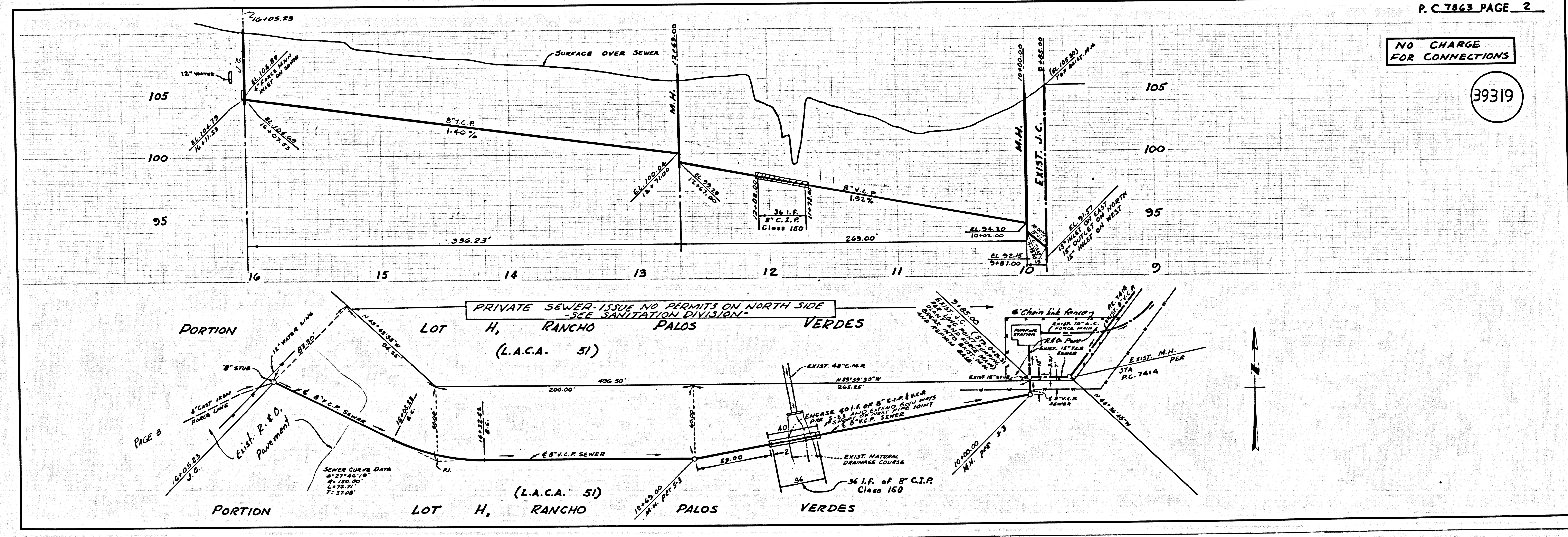
PREPARED IN THE OFFICES OF
 J.H. EDWARDS & CO.
 1501 S. GLENDALE PL.
 LOS ANGELES, CALIF.
 90012
 REG. C.E. NO. 11392

FOR LEGEND SEE PLAN NO. S-1
 NOTE: GRADES TO WHICH THIS IMPROVEMENT IS TO BE CONSTRUCTED ARE SHOWN ON PLANS AND PROFILE. GRADE POINTS FOR TOP OF CURB, CENTER LINE OF STREETS, OR CENTER LINE OF ALLEYS ARE SHOWN BY CIRCLES ON PROFILES. AT ALL POINTS BETWEEN DESIGNATED POINTS THE GRADE SHALL BE ESTABLISHED SO AS TO CONFORM TO A STRAIGHT LINE DRAWN BETWEEN SAID DESIGNATED POINTS. REVISIONS ARE IN PINK ABOVE U.S.C. & G.S. SEA LEVEL, DATUM OF 1929.
 THIS DRAWING AND THE DATA HEREON ARE HEREBY MADE A PART OF THE SPECIFICATIONS. AS A PRELIMINARY WORK SHALL BE CONSTRUCTED ACCORDING TO STANDARD SPECIFICATIONS DATED 1955-56, 1956-57, ON FILE IN THE OFFICE OF THE COUNTY ENGINEER AND SHALL BE PROSECUTED ONLY IN THE PRESENCE OF THE COUNTY ENGINEER.
 BEFORE WORK CAN BE STARTED, THE CONTRACTOR MUST OBTAIN A PERMIT TO OCCUPY CITY STREETS FROM THE L.A. COUNTY ROAD DEPT., DISTRICT OFFICE NO. 1, AND PAY A FEE TO THE COUNTY ENGINEER, ROOM 330, COUNTY ENGINEERING BUILDING, THE WEST SECOND STREET OFFICE, PALM BEACH, FLORIDA, TO OBTAIN A PERMIT TO OCCUPY CITY STREETS FROM THE L.A. COUNTY CONSTRUCTION INSPECTION AND RECORD DEPT.
 APPROVAL OF THIS PLAN BY THE COUNTY OF LOS ANGELES DOES NOT CONSTITUTE A REPRESENTATION AS TO THE ACCURACY OF THE LOCATION OF OR THE EXISTENCE OR NON-EXISTENCE OF ANY UNDERGROUND UTILITY PIPE, OR STRUCTURE WITHIN THE LIMITS OF THIS PROJECT. THIS NOTE APPLIES TO ALL PAGES.
 IF WORK IS TO BE DONE IN A STATE HIGHWAY, A PERMIT MUST BE OBTAINED FROM THE STATE OF CALIFORNIA, DIVISION OF HIGHWAYS, 120 SOUTH SPRING STREET, LOS ANGELES, CALIFORNIA.

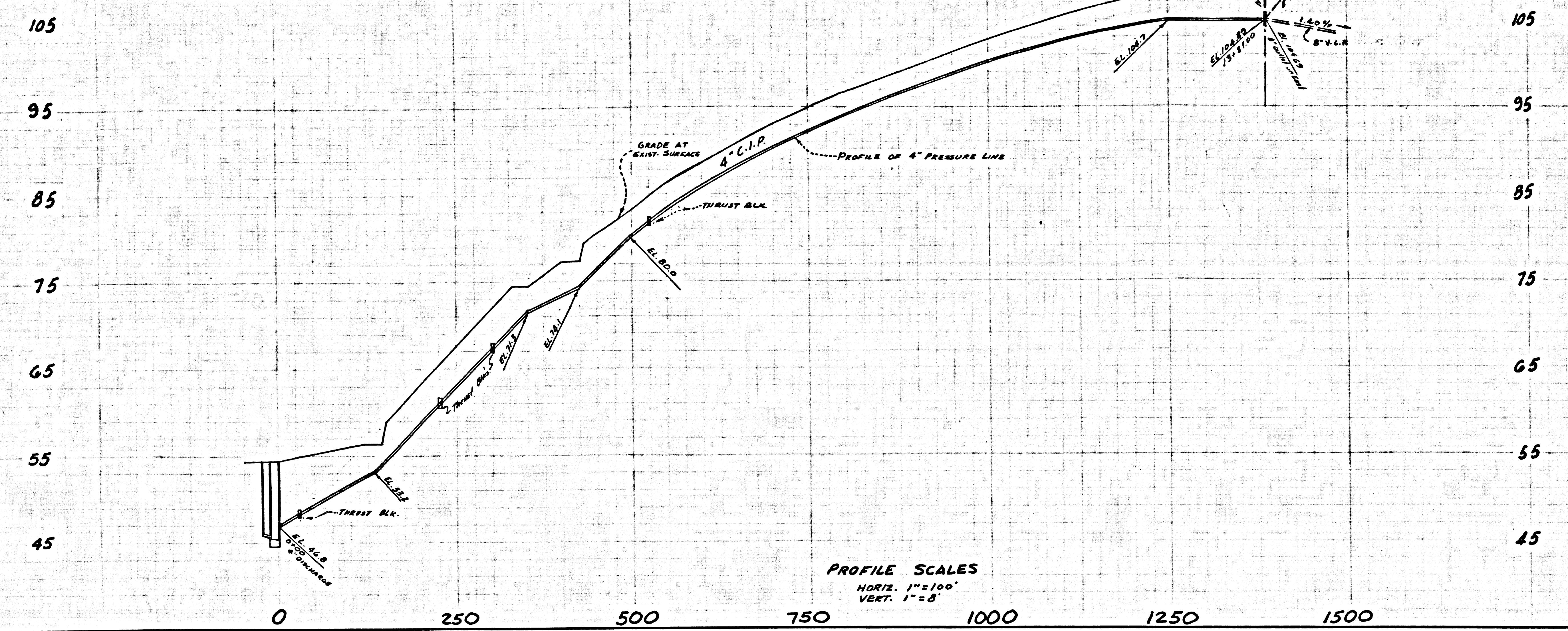
COUNTY OF LOS ANGELES, CALIFORNIA
 JOHN A. LAMBIE, COUNTY ENGINEER J. D. PARKHURST, CHIEF ENGINEER
 COUNTY SANITATION DISTRICT NO. 12
 APPROVED BY: *[Signature]* APPROVED BY: *[Signature]*
 ASSISTANT SANITATION ENGINEER OFFICE ENGINEER

SUBMITTED BY: *[Signature]*
 REGIONAL ENGINEER
 CHECKED BY: *[Signature]*
 REG. C.E. NO. 12417

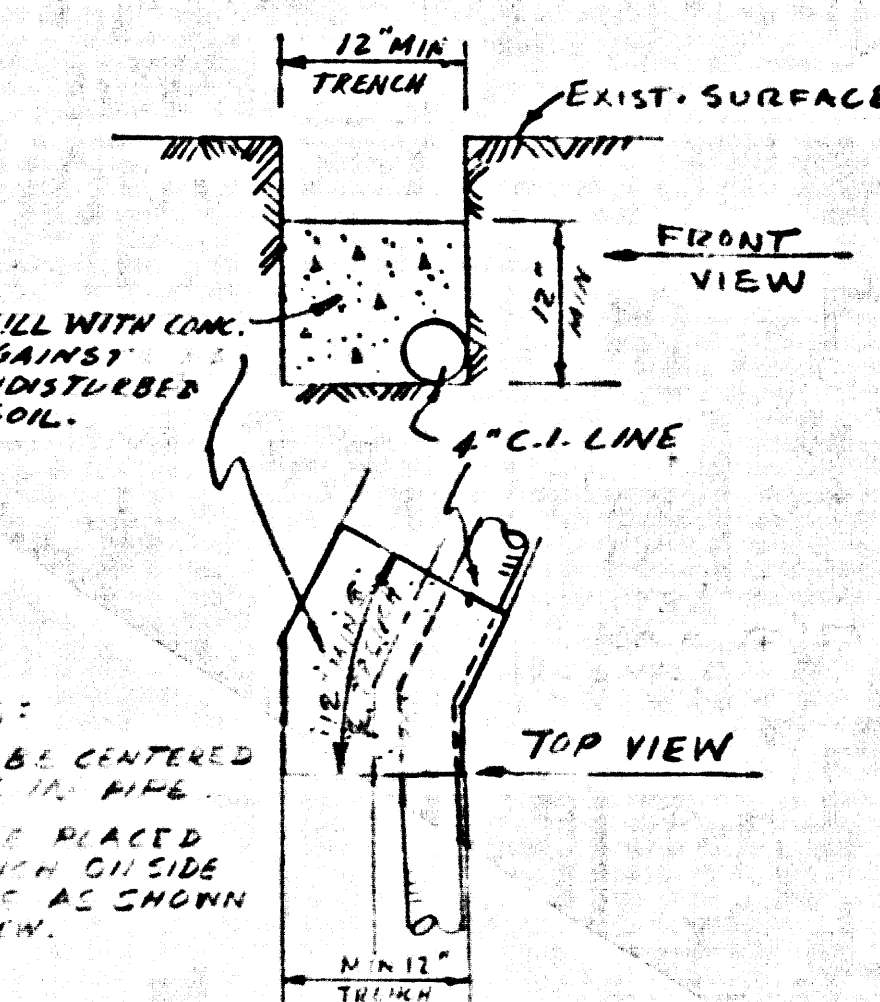
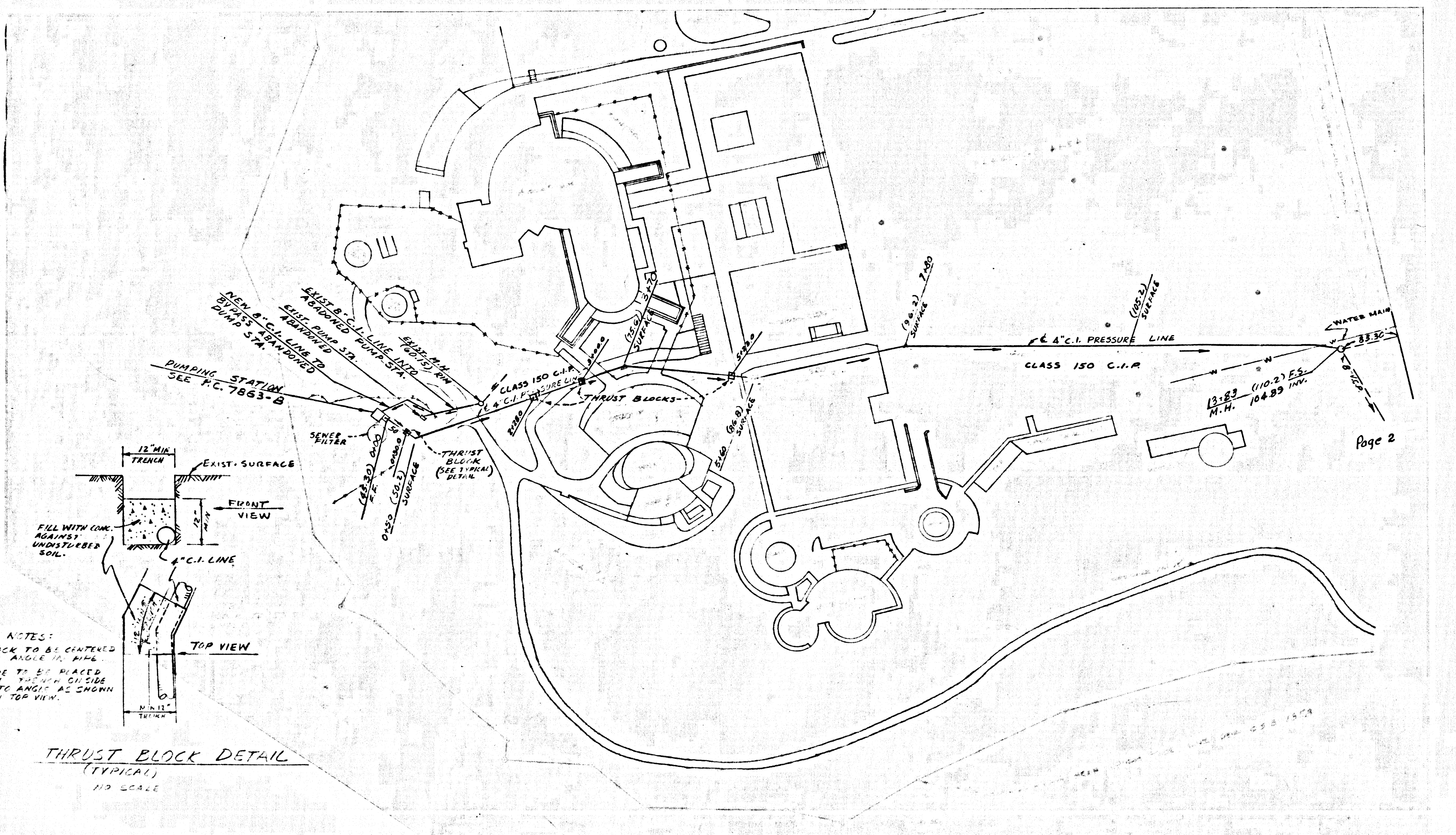
J.N. 0368.49



39321

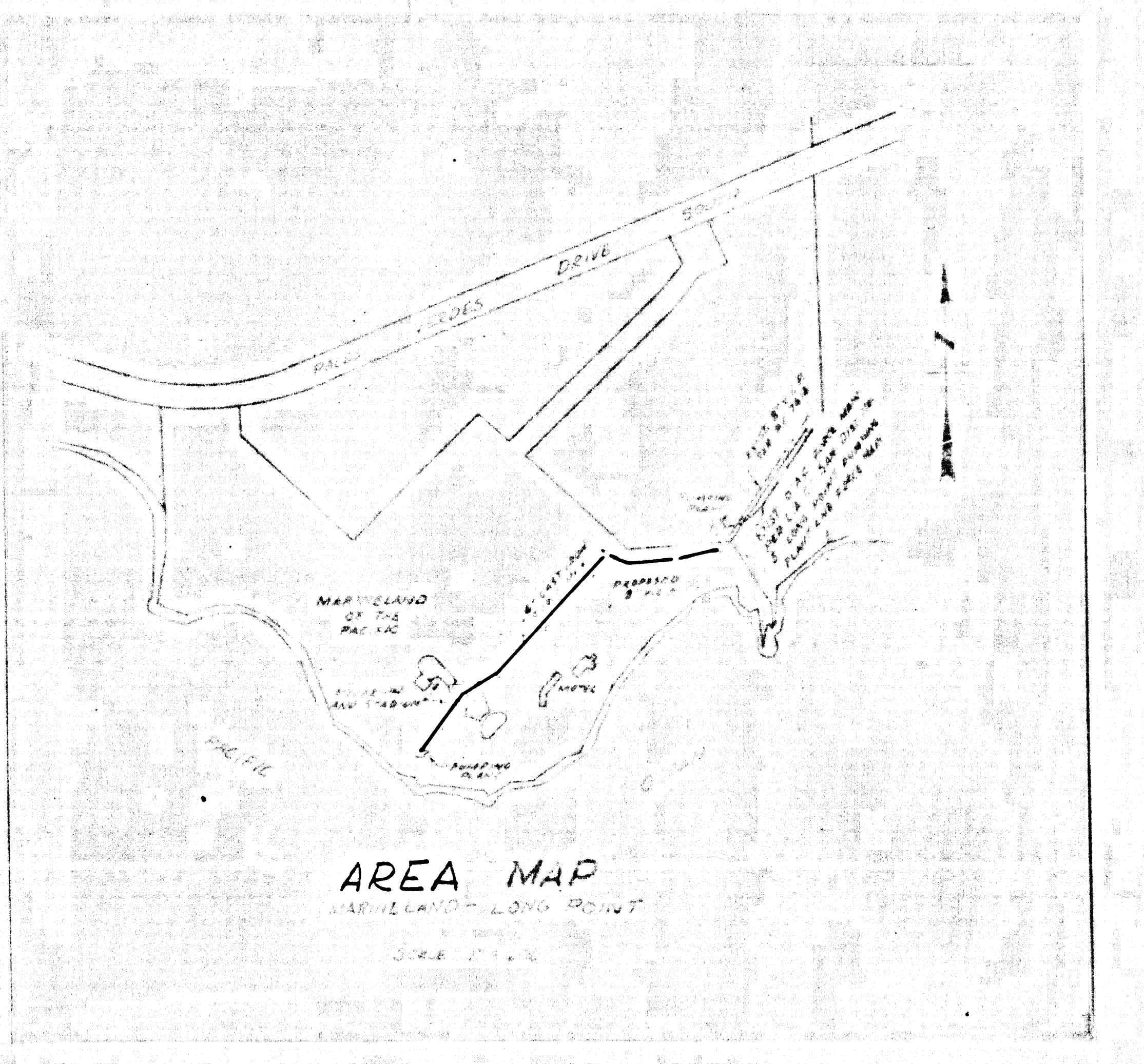


PROFILE SCALES
HORIZ. 1"=100'
VERT. 1"=8'



NOTES:
BLOCK TO BE CENTERED
ON ANGLE OF PIPE
PIPE TO BE PLACED
IN TO ANGLE AS SHOWN
IN TOP VIEW.

THRUST BLOCK DETAIL
(TYPICAL)
NO SCALE



39322

E. Posthumus
MAINTAIN MIN. 30" COVER
P.C. 7863

BENCH MARK
E.M. SYGOTA ELEV. 822.233
4.3 MIN. IN WELL NEAR 90 DEGREE
A.D. 1941 30' S. FALOS VERDE
OR SO M.H. (AM 24-01 1953 RE. 63)
FALOS VERDE CULV 1822

PREPARED IN THE OFFICES OF
J.H. EDWARDS CO
1811 CRENSHAW PLACE
TORRANCE, CALIFORNIA
PHONE 327-2543
(PREPARED UNDER THE DIRECTION OF
J.H. EDWARDS)

PLAN and PROFILE of 4" C.I.P. PRESSURE LINE	
SCALE: 1"=100'	DRAWN BY:
DATE: 2-2-54	REVISED:
DRAWING NUMBER 360	

