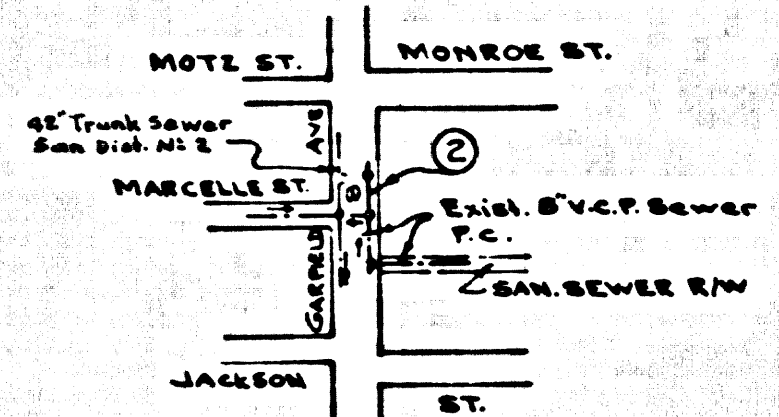


B.M. BY 1916 ELEV. 66.490  
 Rd. B.M. Teg. in N. curb 21 West of  
 B.C.R. NW Corner Alameda Blvd. &  
 Garfield Ave. 40' N. and 185' W. of E. ch.  
 BELLFLOWER QUAD. 1905



INDEX MAP  
 GARFIELD AVENUE  
 P.C. 7864  
 SCALE 1/8"

**NOTICE TO CONTRACTOR**  
 The existence and location of any underground utility pipes or structures shown on these plans are obtained by a search of the available records. To the best of my knowledge there are no existing utilities except as shown on these plans. The contractor is required to take due precautionary measures to protect the utility lines shown and any other lines not of record or not shown on these plans.  
 Ronald W. Bishop 4-19-67  
 R.C.E. 8510

PARAMOUNT BLDG. DIST. NO. 4.04

- NOTE:
1. PROVIDE STAKES ON THE PROPERTY LINE OR PROPERTY LINES PRODUCED AT RIGHT ANGLES TO THE SEWER LINE AT THE CENTER LINE OF EACH MANHOLE.
  2. NO REPRESENTATIVE OF THE CITY ENGINEER WILL SURVEY OR LAY OUT ANY PORTION OF THE WORK.
  3. THE PRIVATE ENGINEER SHALL FURNISH THE CITY ENGINEER WITH GRADE SHEETS AND STATIONING FOR ALL HOUSE LATERALS AND "T" BRANCHES AND SHALL PROVIDE STAKES FOR THEM AT THEIR PROPER LOCATIONS WITH STATIONING PLAINLY MARKED. ALL HOUSE LATERALS SHALL BE CONSTRUCTED IN A STRAIGHT ALIGNMENT AT RIGHT ANGLES FROM THE MAIN LINE SEWER EXCEPT AS SHOWN ON THE PLANS. HOUSE LATERALS FROM CHIMNEYS SHALL NOT HAVE AN ANGLE OF LESS THAN 45° WITH THE MAIN LINE SEWER. ANY CHANGE IN ALIGNMENT SHALL BE SECURED IN WRITING BY THE PRIVATE ENGINEER.
  4. THE PRIVATE ENGINEER SHALL FURNISH THE HOUSE LATERAL DEPTH AT THE PROPERTY LINE BELOW THE TOP OF CURB ELEVATION FOR EACH HOUSE LATERAL ON THE GRADE SHEET.
  5. NO REVISIONS SHALL BE MADE IN THESE PLANS WITHOUT THE APPROVAL OF THE CITY ENGINEER.
  6. THE CONTRACTOR SHALL NOTIFY THE CONSTRUCTION DIVISION BY TELEPHONE, MADISON 9-4747, EXT. 8128, AT LEAST TWENTY-FOUR HOURS BEFORE STARTING ANY WORK UNDER THIS CONTRACT.
  7. MANHOLES SHALL BE EITHER BRICK SEWER STRUCTURES PER S-3 OR PRECAST MANHOLES PER S-5 OR S-6.
  8. USE STANDARD MANHOLE FRAMES AND COVERS, S-14.
  9. MANHOLE DEPTH SHALL BE 36 INCHES ABOVE FINISHED GRADE. 17 1/2 INCHES ABOVE FINISHED GRADE.
  10. USE RETA STRENGTH PIPE, ALL PIPE IS STANDARD SIZES.
  11. USE MECHANICAL COMPRESSION JOINTS FOR ALL V.C.P. JOINTS PER SPEC., SECS. 34, 42 & 43.
  12. IF A POWER POLE IS WITHIN THREE FEET OF THE SEWER, THE SEWER SHALL BE ENCASED, PER S-23, TWO FEET ON EACH SIDE FROM THE POINT OF INTERFERENCE.
  13. IF DURING THE COURSE OF CONSTRUCTION IT IS DETERMINED THAT THERE IS LESS THAN FOUR FEET OF COVER OVER THE TOP OF A MAIN LINE OR HOUSE LATERAL V.C.P. SEWER WHICH IS NOT INDICATED ON THE PLANS, THE PIPE SHALL BE ENCASED PER S-23, UNLESS OTHERWISE APPROVED BY THE CITY ENGINEER.
  14. HOUSE LATERALS TO BE CONSTRUCTED WITH INVERTS AT PROPERTY LINE 4 FEET BELOW CURB GRADE EXCEPT AS NOTED.
  15. RESURFACE ALL TRENCHES WITHIN PAVED AREAS TO MEET L.A. COUNTY ROAD DEPT. OR CALIFORNIA STATE HIGHWAY REQUIREMENTS IN ACCORDANCE WITH PERMITS.
  16. FOR ALLOWABLE LEASAGE TEST USE FORMULA NO. 3, SPEC. S.E.C. 54.
  17. ALL STATE AND LOCAL TRENCH SAFETY ORDINANCES WILL BE STRICTLY ENFORCED.

NO CONNECTIONS FOR THE DISPOSAL OF INDUSTRIAL WASTES SHALL BE MADE TO SEWERS SHOWN ON THESE DRAWINGS WITHOUT WRITTEN PERMISSION FROM THE CITY ENGINEER AND GENERAL MANAGER OF THE COUNTY SANITATION DISTRICTS.

NO CHARGE FOR CONNECTIONS  
 2/25/67  
 4/2/67

Reviewed *Alvin Chidsey*  
 Industrial Waste Division

PROFILE, ALIGNMENT AND GRADE OF  
 SANITARY SEWERS PAGE 1  
 TO BE CONSTRUCTED IN

GARFIELD AVENUE  
 PRIVATE CONTRACT NO. 7864

W.S. 32  
 1 SHEET 2 PAGES  
 SCALE: HORIZ. 1" = 40' VERT. 1" = 4'

APRIL, 1967  
 39614

PREPARED IN THE OFFICES OF  
 OLSON SURVEYING SERVICE  
 by *Ronald W. Bishop 4-19-67*  
 REG. C.E. NO. 8510

FOR LEGEND SEE PLAN NO. S-1

NOTE:  
 GRADES TO WHICH THIS IMPROVEMENT IS TO BE CONSTRUCTED ARE SHOWN ON PLANS AND PROFILE. GRADE POINTS FOR TOP OF CURB, CENTER LINE OF STREETS, OR CENTER LINE OF ALLEYS ARE SHOWN BY CIRCLES ON PROFILES. AT ALL POINTS BETWEEN DESIGNATED POINTS THE GRADE SHALL BE ESTABLISHED SO AS TO CONFORM TO A STRAIGHT LINE DRAWN BETWEEN SAID DESIGNATED POINTS. ELEVATIONS ARE IN FEET ABOVE U.S.C. & G.S. MEAN SEA LEVEL DATUM OF 1929. THE DRAWING AND THE DATA HEREON ARE HEREBY MADE A PART OF THE SPECIFICATIONS. WORK SHALL BE CONSTRUCTED ACCORDING TO STANDARD SPECIFICATIONS MATHEMATICAL AND CIVIL ENGINEERING FROM THE L.A. COUNTY ENGINEER AND SHALL BE PROSECUTED ONLY IN THE PRESENCE OF THE CITY ENGINEER. BEFORE WORK CAN BE STARTED, THE CONTRACTOR MUST OBTAIN A PERMIT TO EXCAVATE IN CITY FROM THE L.A. COUNTY ROAD DEPT., DISTRICT OFFICE NO. 5, 1100 N. GARDEN ST., LOS ANGELES, CALIFORNIA. MAKE A DEPOSIT WITH THE CITY OF PARAMOUNT, CONSTRUCTION INSPECTION AND RECORD PLANS. APPROVAL OF THIS PLAN BY THE CITY OF PARAMOUNT DOES NOT CONSTITUTE A REPRESENTATION AS TO THE ACCURACY OF THE LOCATION OR OF THE EXISTENCE OR NON-EXISTENCE OF ANY UNDERGROUND UTILITY PIPE, OR STRUCTURE WITHIN THE LIMITS OF THE PROJECT. THIS NOTE APPLIES TO ALL PROJECTS UNDER THE JURISDICTION OF THE CITY OF PARAMOUNT. IF WORK IS TO BE DONE IN A STATE HIGHWAY, A PERMIT MUST BE OBTAINED FROM THE STATE OF CALIFORNIA, DIVISION OF HIGHWAY, 126 SOUTH SPRING STREET, LOS ANGELES, CALIFORNIA.

CITY OF PARAMOUNT, CALIFORNIA  
 JOHN A. LAMBIE, CITY ENGINEER J. D. PARKHURST, CHIEF ENGINEER  
 CO. SAN. DIST. NO. 2

APPROVED BY *Richard M. Crow* ASSISTANT SANITATION ENGINEER  
 APPROVED BY *J. D. Parkhurst* OFFICE ENGINEER

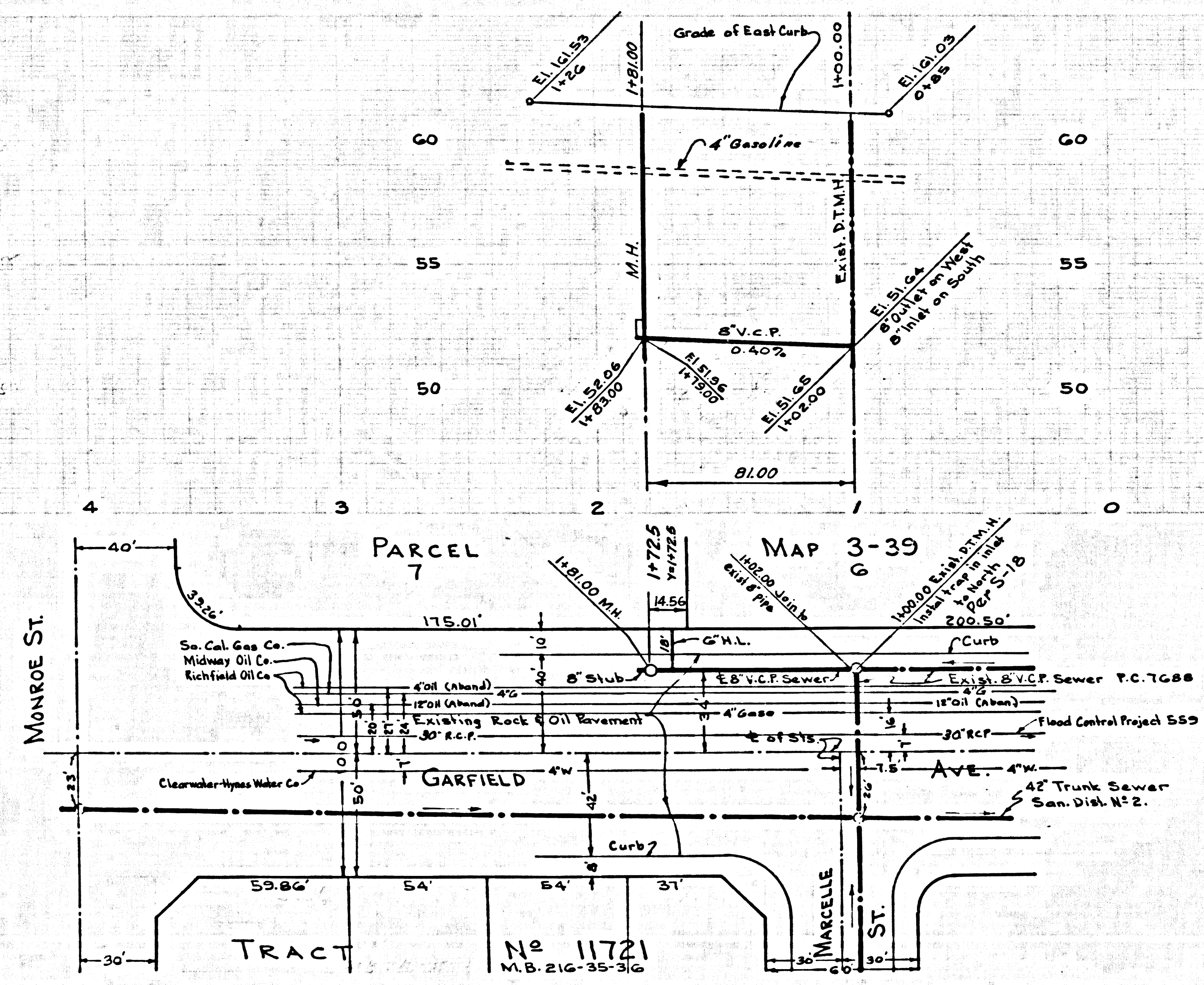
SUBMITTED BY *Frank Williams* REGIONAL ENGINEER, C.E. 11, 1822  
 LOS ANGELES

CHECKED BY *Orville E. McCallum*  
 REG. C.E. NO. 15731

P.C. 7864 PAGE 2

NO CHARGE FOR CONNECTIONS

39615



NOTE: After sewer construction, replace pavement with 1 1/2" A.C. pavement on 4" aggregate base, type A, to top of base course of pavement. After finish course of pavement is constructed, manhole at Sta. 1+76.44 must be adjusted to finished grade.