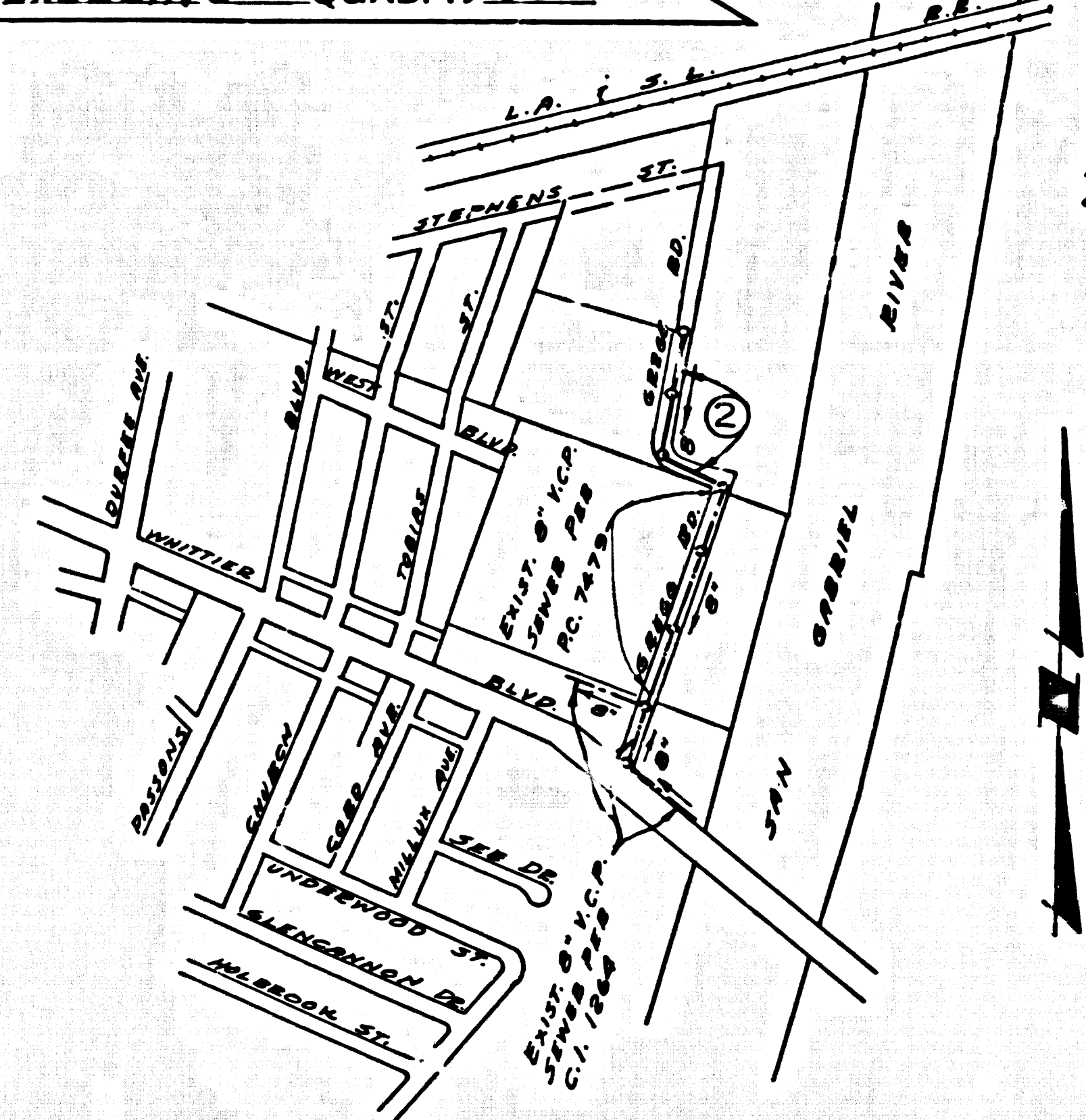


B.M. BY 6245 ELEV. 181.408
 C.O. OF ST. CAP. STATION (C.R. 139 1/2 A.D. DISTRICT) SET IN N. CO. WHITTIER BLDG. 9 IN N. CO. BRIDGE IN 1931-32. OVER SAN GABRIEL RIVER 22 FT. N. & WHITTIER BLDG. 1350 W. ST. P.R.E. BRIDGE OVER WHITTIER BLDG. BASELINE QUAD. 19 65



INDEX MAP
 GREGG ROAD
 P.C. 7868
 SCALE: 1"=600'

PRIVATE ENGINEERS NOTICE TO CONTRACTOR
 THE EXISTENCE AND APPROXIMATE LOCATION OF UNDERGROUND UTILITIES OR STRUCTURES SHOWN ON THESE PLANS WAS DETERMINED BY A SEARCH OF THE AVAILABLE RECORDS. TO THE BEST OF OUR KNOWLEDGE THERE ARE NO EXISTING UNDERGROUND UTILITIES OR STRUCTURES EXCEPT AS SHOWN ON THESE PLANS.
 THE CONTRACTOR IS REQUIRED TO TAKE DUE PRECAUTIONARY MEASURES TO PROTECT THE UTILITIES OR STRUCTURES SHOWN AND ANY OTHER UTILITIES OR STRUCTURES AT THE SITE. IT SHALL BE THE CONTRACTORS RESPONSIBILITY TO NOTIFY THE OWNERS OF THE UTILITIES OR STRUCTURES CONCERNED BEFORE STARTING WORK.

PICO RIVERA BLDG. DIST. NO. 11.01

- NOTE: PROFILE STAGES ON THE PROPERTY LINE OR PROPERTY LINES PRODUCED AT RIGHT ANGLES TO THE SEWER LINE AT THE CENTER LINE OF EACH MANHOLE.
- NO REPRESENTATIVE OF THE CITY ENGINEER WILL SERVE OR LAY OUT ANY PORTION OF THE WORK.
 - THE PRIVATE ENGINEER SHALL FURNISH THE CITY ENGINEER WITH GRADE SHEETS AND STATIONING FOR ALL HOUSE LATERALS AND "Y" BRANCHES AND SHALL PROVIDE STATIONING FOR THESE WITH STATIONING PLANNED MAIN LINE SEWER EXCEPT AS SHOWN ON THE PLANS. HOUSE LATERALS FROM "Y" BRANCHES SHALL NOT HAVE AN ANGLE OF LESS THAN 45° WITH THE MAIN LINE SEWER. ANY CHANGE IN ALIGNMENT SHALL BE INDICATED BY NOTING OF THE PRIVATE ENGINEER.
 - THE PRIVATE ENGINEER SHALL FURNISH THE HOUSE LATERAL DEPTH AT THE PROPERTY LINE BELOW THE TOP OF CURB ELEVATION FOR EACH HOUSE LATERAL ON THE GRADE SHEET.
 - NO REVISIONS SHALL BE MADE IN THESE PLANS WITHOUT THE APPROVAL OF THE CITY ENGINEER.
 - THE CONTRACTOR SHALL NOTIFY THE CONSTRUCTION DIVISION BY TELEPHONE, HARBOR 9-88, EXT. 581, AT LEAST TWENTY-FOUR HOURS BEFORE STARTING ANY WORK UNDER THIS CONTRACT.
 - MANHOLES SHALL BE EITHER BRICK OR CONCRETE PER S-3 OR PRECAST CONCRETE MANHOLES PER S-3 OR S-6, EXCEPT AS NOTED.
 - USE STANDARD MANHOLE FRAMES AND COVERS, S-1, EXCEPT AS NOTED.
 - USE DETAIL STANDARD PIPE, ALL PIPE IS STANDARD PIPE.
 - USE MECHANICAL COMPRESSION JOINTS FOR ALL V.C.P. JOINTS PER SPEC. SECS. 34, 4 & 4 R.
 - IF A POWER POLE IS WITHIN TWENTY FEET OF THE SEWER, THE SEWER SHALL BE ENCASED, PER S-25, TWO FEET ON EACH SIDE FROM THE POINT OF INTERFERENCE.
 - IF DURING THE COURSE OF CONSTRUCTION IT IS DETERMINED THAT THERE IS LESS THAN FOUR FEET OF COVER OVER THE TOP OF A MAIN LINE OF HOUSE LATERAL V.C.P. SEWER WHICH IS NOT INDICATED ON THE PLANS, THE PIPE SHALL BE ENCASED PER S-25, UNLESS OTHERWISE APPROVED BY THE CITY ENGINEER.
 - HOUSE LATERALS TO BE CONSTRUCTED WITH 1/4" DIA. E. PIPE FT. TO D/W LINE.
 - RESURFACE ALL TRENCHES WITHIN PAVED AREAS TO MEET L.A. COUNTY ROAD DEPT. OR CALIFORNIA STATE HIGHWAY REQUIREMENTS IN ACCORDANCE WITH PERMITS.
 - FOR ALLOWABLE LEAKAGE TEST USE FORMULA NO. 3, SPEC. 34.
 - ALL STATE AND LOCAL TRENCH SAFETY ORDERS WILL BE STRICTLY ENFORCED.
 - ALL C.I.P. SHALL BE CLASS 500 OR BETTER WITH TYPICAL JOINTS OR APP. EQUAL.
 - ALL JOINTS BETWEEN 50' AND 150' SHALL BE TYPICAL WITH A SERRATED JOINT. WITH JOINTS IN EXCESS OF 150' SEE SECTION 34 OF SPEC.

ISSUE NO CONNECTION PERMITS UNTIL PC 7479 HAS BEEN ACCEPTED

COLLECT CHARGES AS INDICATED
Richard M. Con
 ASSISTANT SANITATION ENGINEER

CONNECTIONS FOR THE DISPOSAL OF SOLID WASTE SHALL BE MADE TO EXISTING OR TO BE CONSTRUCTED IN ACCORDANCE WITH THE CITY ENGINEER'S SPECIFICATIONS.

REVIEWED: *RA. Moore*
 INDUSTRIAL WASTE DIVISION

TO BE CONSTRUCTED IN
GREGG ROAD NO. 2

PRIVATE CONTRACT NO. 7868

W.S. 36
 1 SHEET OF 2 PAGES
 SCALE: HORIZ. 1"=40' VERT. 1"=4' APRIL, 1967

40201

PREPARED IN THE OFFICES OF
KEAMERER ENGR. CO. INC.
 6705 S. PAINTER AVE., WHITTIER, CALIFORNIA

Robert P. Fisher
 REG. C.E. NO. 11349

FOR LEGEND SEE PLAN NO. S-1

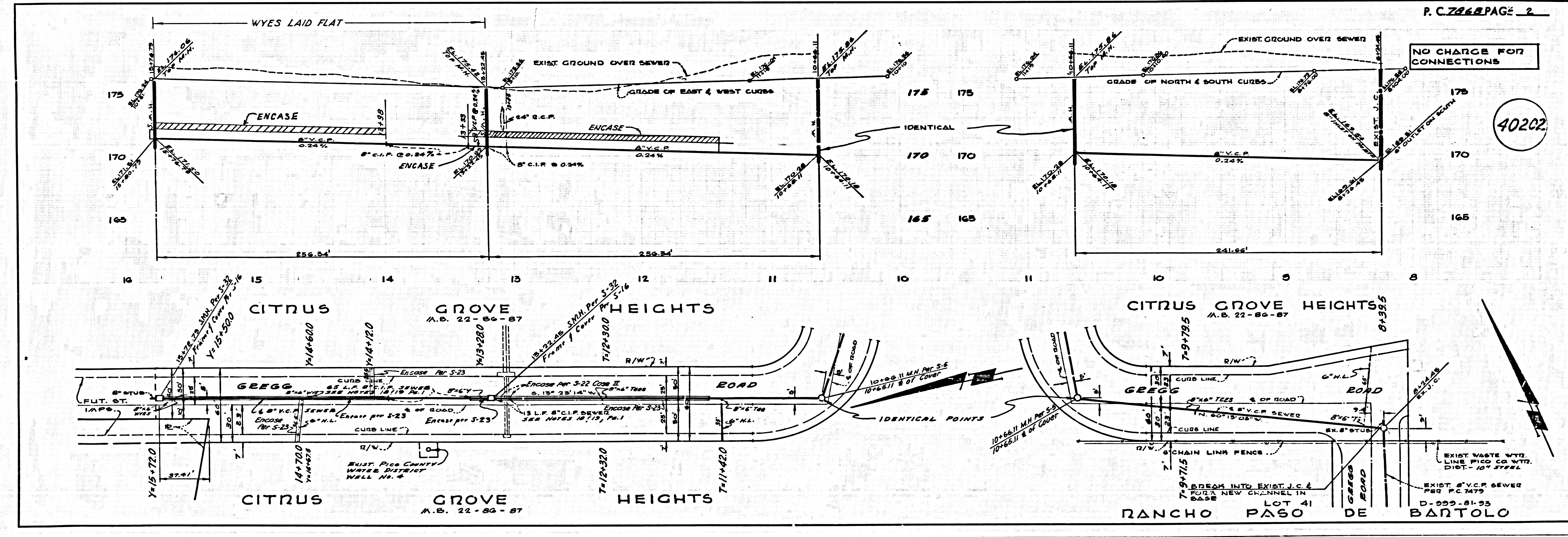
NOTE: GRADES TO WHICH THE IMPROVEMENT IS TO BE CONSTRUCTED ARE SHOWN ON PLANS AND PROFILES. GRADE POINTS FOR TOP OF CURB, CENTER LINE OF STREET, OR CENTER LINE OF ALLEY ARE SHOWN BY CIRCLES OR SQUARES AT ALL POINTS BETWEEN DESIGNATED POINTS. THE GRADE SHALL BE ESTABLISHED SO AS TO CONFORM TO A STRAIGHT LINE DRAWN BETWEEN SAID DESIGNATED POINTS. THERE SHALL BE NO INTERFERENCES BETWEEN THE GRADES OF THE SEWER AND THE GRADES OF THE STREET OR ALLEY. THE DRAWING AND THE DATA HEREON ARE HEREBY MADE A PART OF THE SPECIFICATIONS. APPROVAL OF THE PLANS BY THE CITY ENGINEER SHALL BE CONSIDERED AS AN APPROVAL OF THE CITY ENGINEER'S INTERPRETATION OF THE SPECIFICATIONS. THE CITY ENGINEER AND HIS REPRESENTATIVE SHALL BE PRESENT AT THE TIME OF THE CONSTRUCTION INSPECTION AND SECOND PLANS. APPROVAL OF THE PLANS BY THE CITY ENGINEER SHALL BE CONSIDERED AS AN APPROVAL OF THE CITY ENGINEER'S INTERPRETATION OF THE SPECIFICATIONS. THE CITY ENGINEER SHALL NOT BE RESPONSIBLE FOR THE ACCURACY OF THE LOCATION OR OF THE EXISTENCE OR NON-EXISTENCE OF ANY UNDERGROUND UTILITY PIPE, OR STRUCTURE WITHIN THE LIMITS OF THE PROJECT. THIS NOTE APPLIES TO ALL WORK DONE IN A STATE HIGHWAY, A PERMIT MUST BE OBTAINED FROM THE STATE OF CALIFORNIA, DIVISION OF HIGHWAYS, 120 SOUTH SPRING STREET, LOS ANGELES, CALIFORNIA.

CITY OF PICO RIVERA, CALIFORNIA
 JOHN A. LAMBE, CITY ENGINEER J. D. PARKHURST, CHIEF ENGINEER

APPROVED BY *Richard M. Con* ASSISTANT SANITATION ENGINEER APPROVED BY *J. D. Parkhurst* CHIEF ENGINEER

CHECKED BY *David P. McCall*
 REG. C.E. NO. 15731

CITY OF PICO RIVERA
 APPROVED *[Signature]*
 DIRECTOR OF ENG. SERV.



NO CHARGE FOR CONNECTIONS

40202