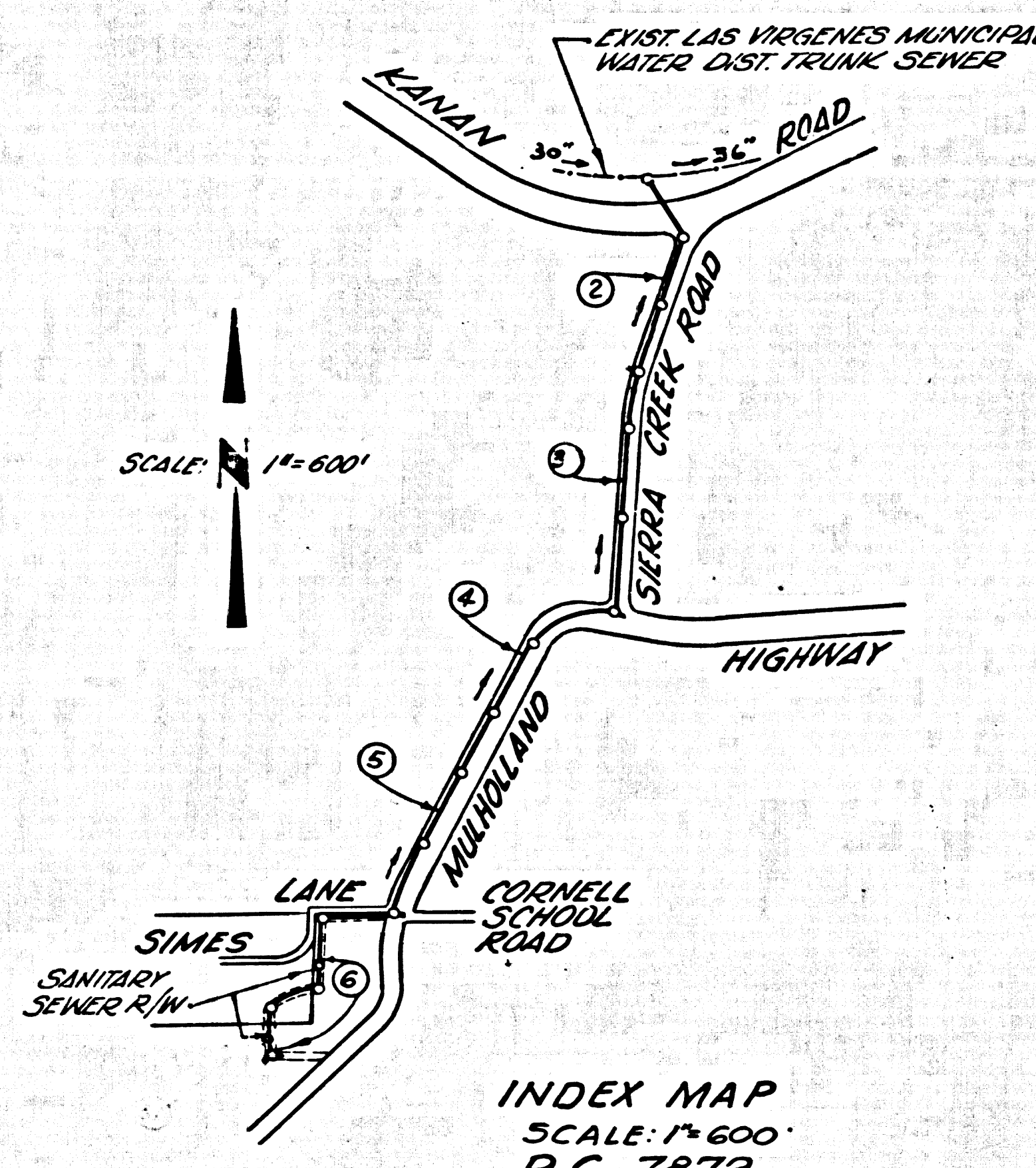


B.M. SY 5523 ELEV. 839.062  
 C5 BR CAP 12 IN CONC POST 6 IN ABOVE SURFACE 34 FT ±  
 N APPROX C/L MULHOLLAND HWY ± 45 FT ± E OF EDGE  
 MAC SIERRA CREEK RD 76 FT ± NE PP NO. 609620M &  
 176 FT ± NW PP NO. 609620M MCD (SM 58-42-22-569 1961)  
 MALIBU QUAD. 19.60



TESTING  
 1. INFILTRATION AND LEAKAGE TESTS: METHOD USED FOR TESTING WILL BE THE SAME AS LOS ANGELES COUNTY EXCEPT THE FORMULA TO BE USED IS AS FOLLOWS:  
 0.033 GALLONS / MINUTE / INCH OF DIAMETER / 1,000 FEET  
 OR  
 250 GALLONS / DAY / INCH OF DIAMETER / MILE

2. MANHOLE LEAKAGE TESTS:  
 REPRESENTATIVE ONE MANHOLE OUT OF EVERY TEN MANHOLES, AND A MINIMUM OF TWO WILL BE FILLED WITH WATER AND AFTER THREE HOURS WILL BE CHECKED FOR LEAKAGE, WITH NO DROP IN LEVEL. FOR EVERY ONE MANHOLE NOT PASSING TESTS FIVE MORE WILL BE TESTED

3. AIR TESTING: WHERE THE DIFFERENCE IN ELEVATION BETWEEN THE INVERT OF THE UPPER STRUCTURE AND THE INVERT OF THE LOWER STRUCTURE IS MORE THAN SIX FEET (6) AN AIR TEST WILL BE MADE.  
 THE TIME TAKEN TO LOSE ONE (1) POUND PER SQUARE INCH GAUGE PRESSURE FROM THREE (3) POUNDS PER SQUARE INCH GAUGE PRESSURE TO TWO (2) POUNDS PER SQUARE INCH GAUGE PRESSURE SHALL NOT BE LESS THAN TIMES SHOWN ON THE FOLLOWING TABLE:

MAIN PIPE DIAMETER	MINIMUM TIME LOSE
6" - 14"	1 MINUTE
15" - 20"	2 MINUTES
21" - 30"	3 MINUTES
33" - 36"	4 MINUTES

IF THE TIME IS LESS THAN LISTED IN THE TABLE ABOVE, THE CONTRACTOR SHALL MAKE SUCH REPAIRS AS ARE NECESSARY TO ELIMINATE THE EXCESSIVE LEAKAGE.

THE CONTRACTOR SHALL NOTIFY THE L.V.M.W.D. 48 HOURS PRIOR TO COMMENCING WORK. AREA CODE 213-889-0110.

REVISIONS	REVISIONS
DATE: Aug. 27, 1968	Eliminated "Y's" serving East Side of Sierra Creek Road & Mulholland Dr.
Raised grade from Sta 54+57.49 to Sta. 56+169.70 (Page G)	Realigned 15" Sewer between sta. 15+61.24 and 16+23.25
Relocated MH from Sta 26+91.92 to Sta. 26+88.92. (Page 6)	
Approved: <i>Paul Miller</i> Regional Engineer	Approved: <i>Arthur B. Shurtliff</i> DATE: 1/19/68 <i>Ronald Valachi</i> 9/23/68

DOUBLE SCALE  
 CALABASAS BLDG. DIST. NO. 9.1

- NOTE:
- PROVIDE STAKES ON THE PROPERTY LINE OR PROPERTY LINES PRODUCED AT RIGHT ANGLES TO THE SEWER LINE AT THE CENTER LINE OF EACH MANHOLE.
  - NO REPRESENTATIVE OF THE COUNTY ENGINEER WILL SURVEY OR LAY OUT ANY PORTION OF THE WORK.
  - THE PRIVATE ENGINEER SHALL FURNISH THE COUNTY ENGINEER WITH GRADE SHEETS AND STATIONING FOR ALL HOUSE LATERALS AND "T" OR "Y" BRANCHES AND SHALL PROVIDE STAKES FOR THEM AT THEIR PROPER LOCATIONS WITH STATIONING PLAINLY MARKED. ALL HOUSE LATERALS SHALL BE CONSTRUCTED IN A STRAIGHT ALIGNMENT AT RIGHT ANGLES FROM THE MAIN LINE SEWER EXCEPT AS SHOWN ON THE PLANS. HOUSE LATERALS FROM CHIMNEYS SHALL NOT HAVE AN ANGLE OF LESS THAN 45° WITH THE MAIN LINE SEWER. ANY CHANGE IN ALIGNMENT SHALL BE REQUESTED IN WRITING BY THE PRIVATE ENGINEER.
  - THE PRIVATE ENGINEER SHALL FURNISH THE HOUSE LATERAL DEPTH AT THE PROPP-T LINE BELOW THE TOP OF CURB ELEVATION FOR EACH HOUSE LATERAL ON THE GRADE SHEET.
  - NO REVISIONS SHALL BE MADE IN THESE PLANS WITHOUT THE APPROVAL OF THE COUNTY ENGINEER.
  - THE CONTRACTOR SHALL NOTIFY THE CONSTRUCTION DIVISION BY TELEPHONE, MADISON 9-47, EXT. 8151, AT LEAST TWENTY-FOUR HOURS BEFORE STARTING ANY WORK UNDER THIS CONTRACT.
  - ALL STRUCTURES SHALL BE EITHER BRICK MANHOLES PER S-3 OR PRECAST CONCRETE MANHOLES PER S-3 OR S-4, EXCEPT AS NOTED.
  - USE STANDARD MANHOLE FRAMES AND COVERS, S-12, EXCEPT AS NOTED.
  - MANHOLE JOBS IN UNIMPROVED RIGHTS-OF-WAY TO BE 32 INCHES ABOVE FINISHED GRADE.
  - USE EXTRA STRENGTH PIPE. ALL PIPE IS STANDARD DEPTH EXCEPT AS NOTED.
  - 1 1/2" TRIFIED CLAY PIPE JOINTS SHALL BE TYPE "D", "D", "D" PER STD. SPEC. SMC 508-2
  - IF A POWER POLE IS WITHIN THREE FEET OF THE SEWER, THE SEWER SHALL BE ENCASED, PER S-23, TWO FEET ON EACH SIDE FROM THE POINT OF INTERFERENCE.
  - IF DURING THE COURSE OF CONSTRUCTION IT IS DETERMINED THAT THERE IS LESS THAN FOUR FEET OF COVER OVER THE TOP OF A MAIN LINE OR HOUSE LATERAL V.C.P. SEWER WHICH IS NOT INDICATED ON THE PLANS, THE PIPE SHALL BE ENCASED PER S-23, UNLESS OTHERWISE APPROVED BY THE COUNTY ENGINEER.
  - HOUSE LATERALS TO BE CONSTRUCTED WITH INVERTS AT PROPERTY LINE A FEET BELOW CURB GRADE EXCEPT AS NOTED. \_\_\_\_\_
  - REPAIRS ALL TRENCHES WITHIN PAVED AREAS TO MEET L.A. COUNTY ROAD DEPT. OR CALIFORNIA STATE HIGHWAY REQUIREMENTS IN ACCORDANCE WITH PERMITS.
  - ALL STATE AND LOCAL TRENCH SAFETY ORDERS WILL BE STRICTLY ENFORCED.
  - SPECIAL BACKFILL IN DESIGNATED AREAS:
    - (M) BACKFILL TRENCH AND RELATED OTHER EXCAVATIONS SO AS TO ACHIEVE THE NATURAL OR FINISHED GRADES AND SLOPES SHOWN ON THE GRADING PLAN APPROVED FOR THIS TRACT BY THE BUILDING AND SAFETY DIVISION.
    - (N) ALL BACKFILL AND EARTH REPLACEMENT SHALL BE COMPACTED TO A MINIMUM OF 90% OF MAXIMUM DENSITY PER A.S.T.M. STANDARD METHOD OR TEST METHOD AS MODIFIED. ACCEPTABLE CERTIFICATION OF SUCH COMPACTION SHALL BE SUBMITTED TO THE CONSTRUCTION DIVISION.
    - (P) "T" BRANCHES MAY BE USED IN PLACE OF "Y" BRANCHES, EXCEPT AS NOTED.
- THE FOLLOWING COUNTY ENGINEER STRAIGHT PLANS APPLY TO THIS PROJECT
- |  |      |
|--|------|
| Legal                                    | 5-1  |
| Minimum Excavation Safety Requirements   | 5-2  |
| Excavation                               | 5-3  |
| Non-Reinforced precast Concrete Manholes | 5-4  |
| Reinforced Concrete Manholes             | 5-5  |
| Manhole Frames & Covers                  | 5-6  |
| Manhole Slope                            | 5-7  |
| Bedding For Sewer Pipe                   | 5-8  |
| Condition of Excavation                  | 5-9  |
| Way or Top Support                       | 5-10 |
| Allowable Trench Widths                  | 5-11 |

COLLECT CHARGES AS INDICATED  
*L. Austin* 1/19/68

PROFILE ALIGNMENT AND GRADE OF  
 SANITARY SEWERS P.C. 7872  
 TO BE CONSTRUCTED IN PAGE 1

MULHOLLAND HWY. & SIERRA CREEK RD.  
 PRIVATE CONTRACT NO. 7872

W.S. 93  
 3 SHEETS; 6 PAGES  
 SCALE: VERT. 1"=8' August 15, 1967  
 HORIZ. 1"=40'  
 PREPARED IN THE OFFICES OF  
 O'MALLEY & SHURTLEFF

By *Arthur B. Shurtliff*  
 REG. C.E. NO. 9254

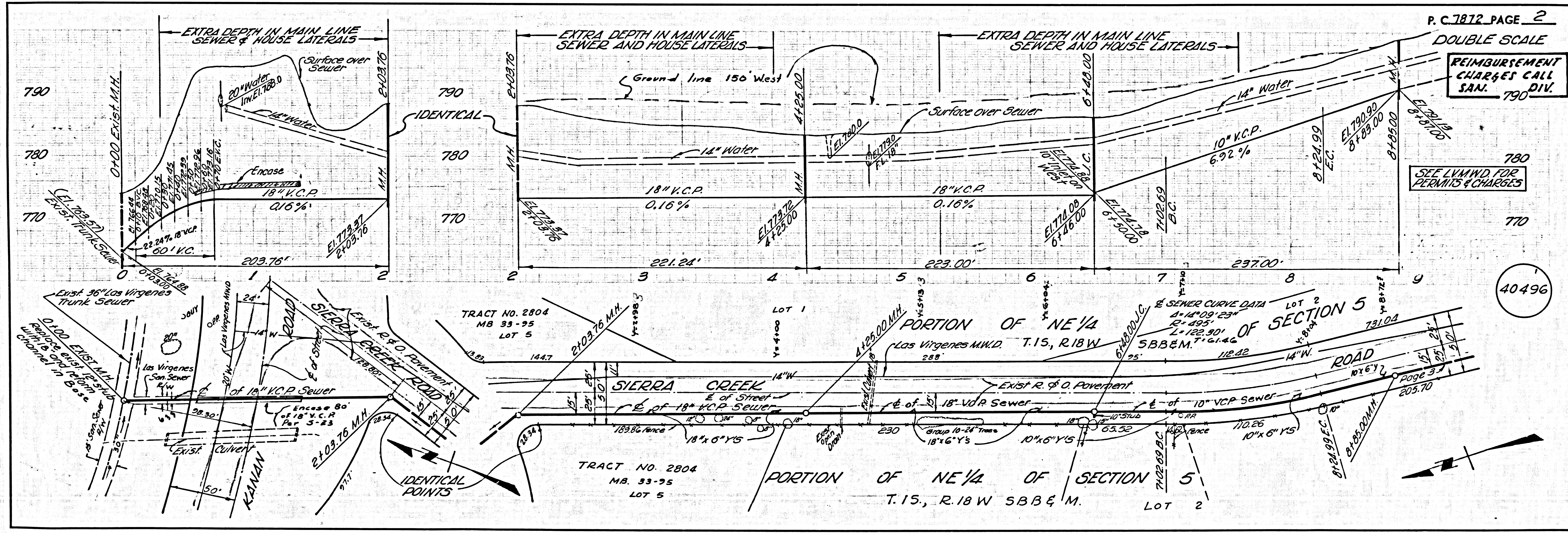
FOR LEGEND SEE PLAN NO. S-1

NOTE:  
 GRADES TO WHICH THIS IMPROVEMENT IS TO BE CONSTRUCTED ARE SHOWN ON PLANS AND PROFILES. GRADE POINTS FOR TOP OF CURBS, CENTER LINE OF STREETS, OR CENTER LINE OF ALLEYS ARE SHOWN BY CIRCLES ON PROFILES AT ALL POINTS BETWEEN DESIGNATED POINTS THE GRADE SHALL BE ESTABLISHED SO AS TO CONFORM TO A STRAIGHT LINE DRAWN BETWEEN SAID DESIGNATED POINTS. ELEVATIONS ARE IN FEET ABOVE U.S.C. & G.S. SEA LEVEL DATUM OF 1929.  
 THE DRAWINGS AND THE DATA HEREON ARE HEREBY MADE A PART OF THE SPECIFICATIONS FOR PUBLIC WORKS CONSTRUCTION AND WORK SHALL BE CONSTRUCTED ACCORDING TO THE UNIFORM STANDARD SPECIFICATIONS FOR PUBLIC WORKS CONSTRUCTION AND COUNTY ENGINEER SPECIAL PROVISIONS DATED 7-27-68. AS REVISIONS AND SHALL BE PROCURED ONLY IN THE PRESENCE OF THE COUNTY ENGINEER.  
 NO WORK SHALL BE STARTED UNTIL THE CONTRACTOR OBTAINS A PERMIT TO EXCAVATE IN COUNTY STREETS FROM THE L.A. COUNTY ROAD DEPT., DISTRICT OFFICE NO. 354428 C AND PAY A FEE TO THE COUNTY ENGINEER, ROOM 330, COUNTY ENGINEERING BUILDING, 108 WEST SECOND STREET, LOS ANGELES, CALIF. AND A FEE TO THE COUNTY ENGINEER, DISTRICT OFFICE, SUFFICIENT TO COVER THE COST OF CONSTRUCTION INSPECTION AND RECORD PLANS.  
 APPROVAL OF HIS PLAN BY THE COUNTY OF LOS ANGELES DOES NOT CONSTITUTE A REPRESENTATION AS TO THE ACCURACY OF THE LOCATION OR OF THE EXISTENCE OR NON-EXISTENCE OF ANY UNDERGROUND UTILITY PIPE, OR STRUCTURE WITHIN THE LIMITS OF THIS PROJECT. THIS NOTE APPLIES TO ALL PAGES.  
 IF WORK IS TO BE DONE IN A STATE HIGHWAY, A PERMIT MUST BE OBTAINED FROM THE STATE OF CALIFORNIA, DIVISION OF HIGHWAYS, 120 SOUTH SPRING STREET, LOS ANGELES, CALIFORNIA.

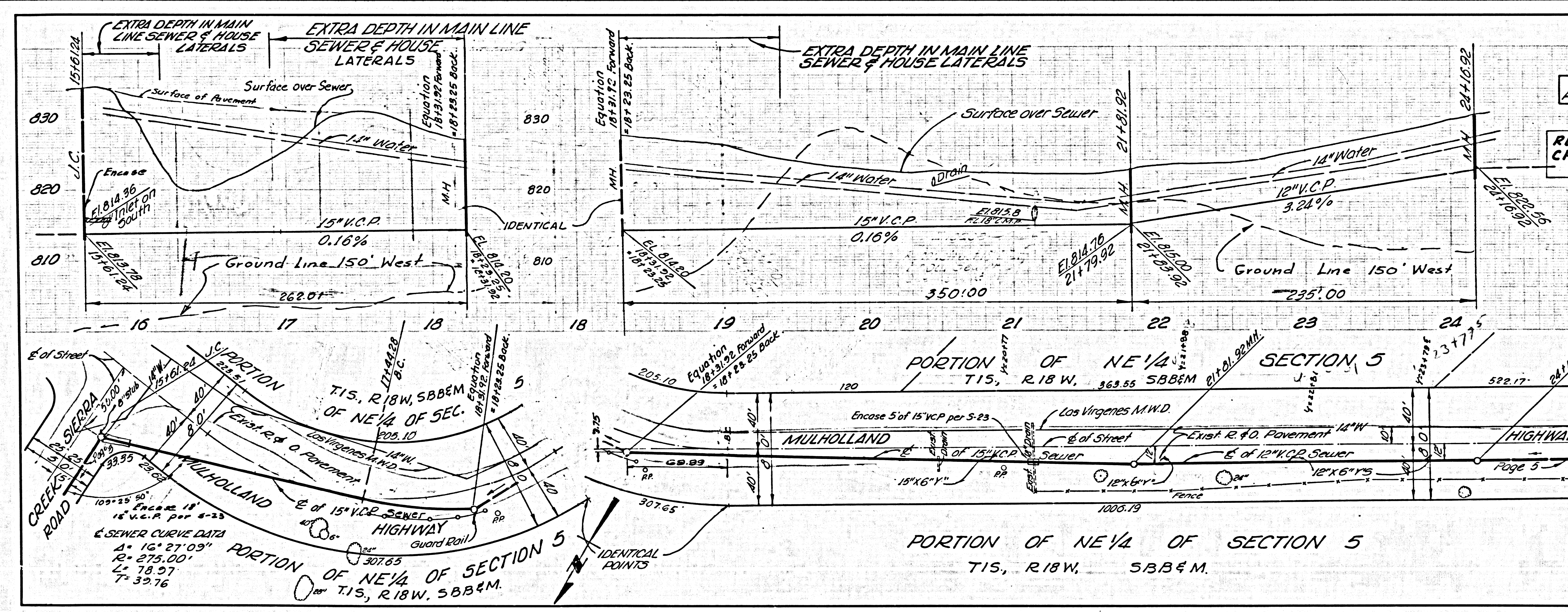
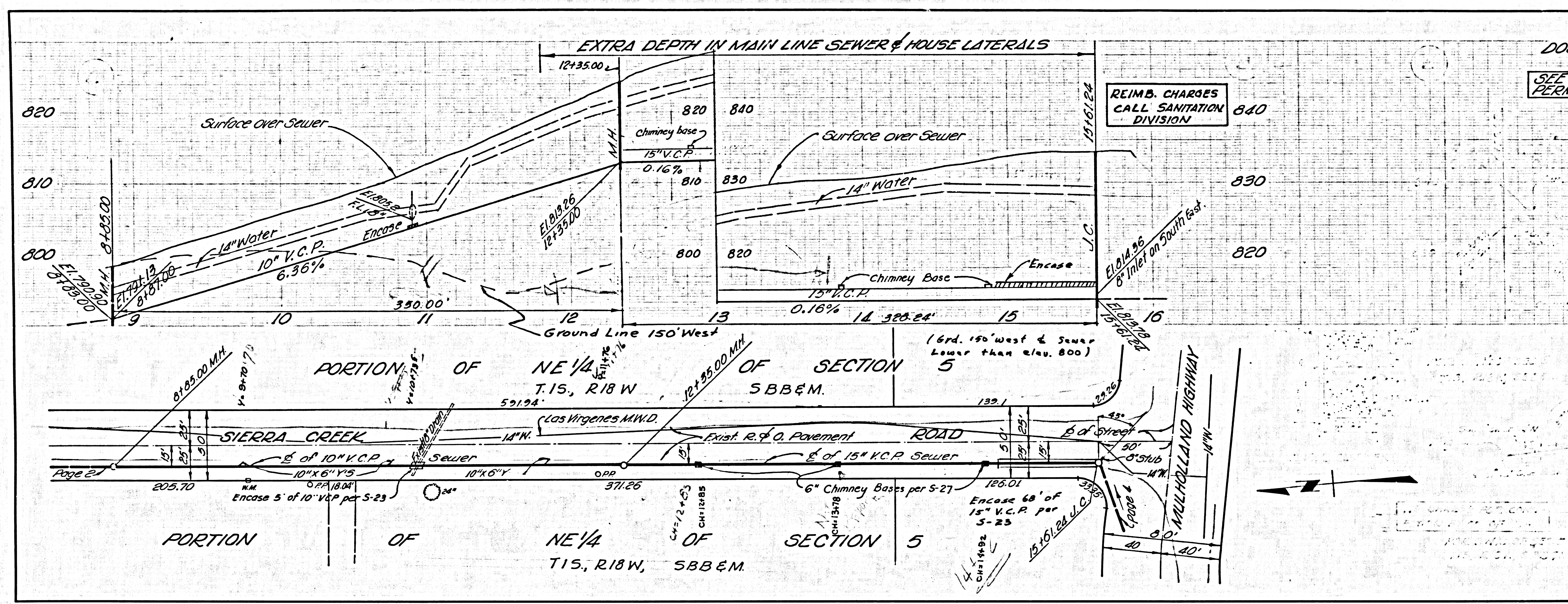
COUNTY OF LOS ANGELES, CALIFORNIA  
 JOHN A. LAMBIE, COUNTY ENGINEER  
 LAS VIRGENES MUNICIPAL WATER DISTRICT  
 APPROVED BY *Robert Miller* REGIONAL ENGINEER  
 APPROVED BY *Neil Stiles* GENERAL MANAGER & CHIEF ENGINEER

CHECKED BY *Ronald Valachi* 9/18/67  
 REG. C.E. NO. 70653

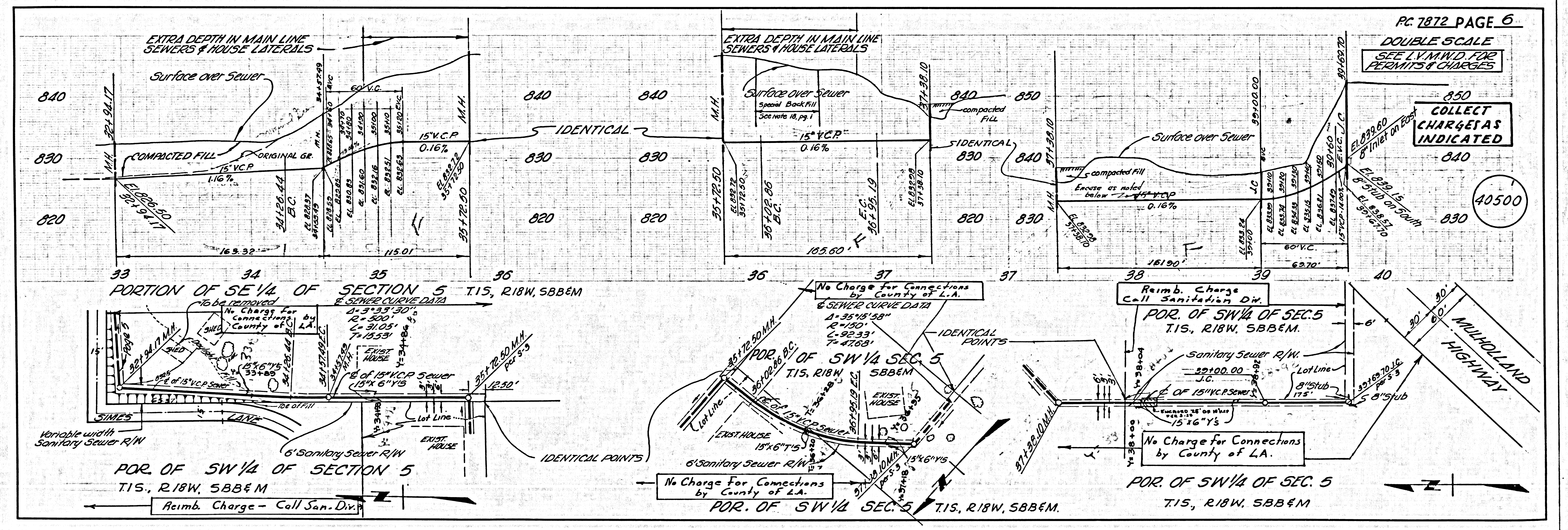
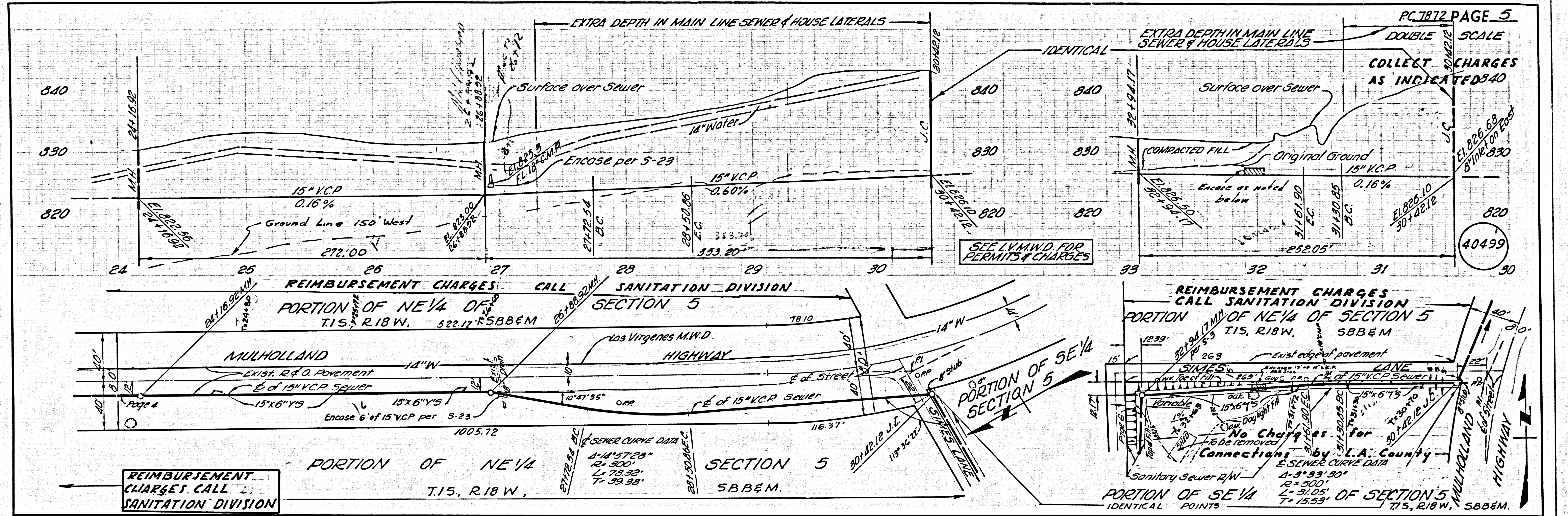
J. N. 0368.50











11/15/00