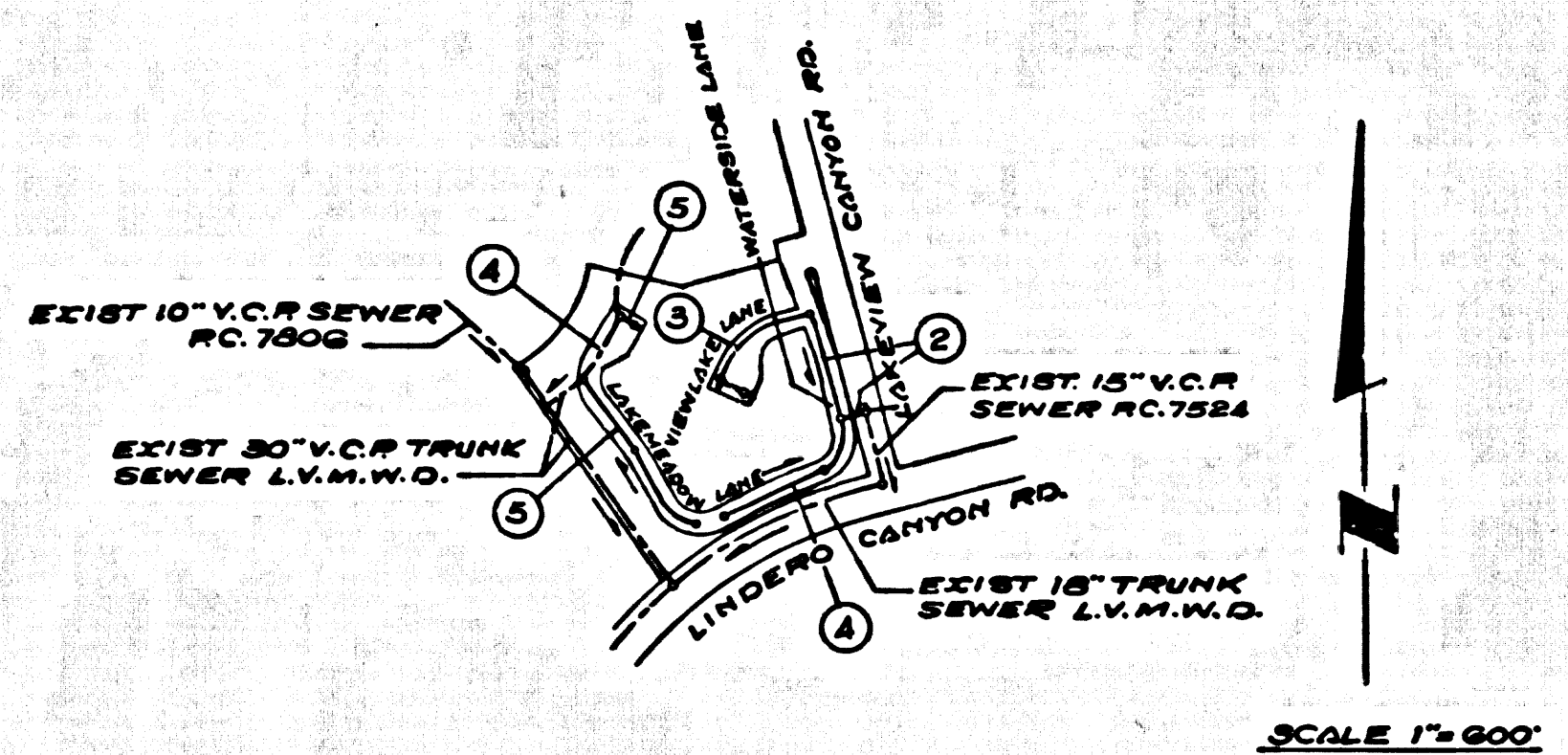


B.M. SY-5636 ELEV. 960-472
 15" CAP CONC. MON. 6 IN. DN. E
 VENTURA BLVD. @ E.C. 24 MI. E
 W. CORNELL ROAD.
 MALIBU QUAD. 1920



INDEX MAP
 TRACT No 28459
 P.C. 7882

NOTE
 NUMBER IN CIRCLE INDICATES PAGE NUMBER

DOUBLE SCALE
 CALABASAS BLDG. DIST. NO. 9.1

PROFILE, ALIGNMENT AND GRADE OF P.C. 7882
 SANITARY SEWERS PAGE 1
 TO BE CONSTRUCTED IN

TRACT No 28459
 PRIVATE CONTRACT NO. 7882

W.S. 93 162-037
 3 SHEETS, 5 PAGES

SCALE: HORIZ. 1" = 40' VERT. 1" = 4'

JUNE, 1967

PREPARED IN THE OFFICES OF
 McINTIRE & QUIROS INC.

George J. Quiros
 REG. C.E. NO. 15810

40236

FOR LEGEND SEE PLAN NO. S-1

THE ACCURACY OF THE LOCATION OF OR THE EXISTENCE OR NON-EXISTENCE OF ANY UTILITY PIPE OR STRUCTURE, WITHIN THE LIMITS OF THIS PROJECT DOES NOT CONSTITUTE RESPONSIBILITY BY THE ENGINEER.

TESTING PER LAS VIRGENES MUNICIPAL WATER DISTRICT

1. INFILTRATION AND LEAKAGE TEST:
 METHOD USED FOR TESTING WILL BE THE SAME AS LOS ANGELES COUNTY EXCEPT THE FORMULA TO BE USED IS AS FOLLOWS
 0.83 GALLONS (MINUTE) (INCH OF DIAMETER) / 1000 FEET OR
 830 GALLONS (DAY) (INCH OF DIAMETER) / MILE

2. MANHOLE LEAKAGE TEST:
 AT THE DISCRETION OF THE DISTRICT'S REPRESENTATIVE ONE MANHOLE OUT OF TEN MANHOLES AND A MINIMUM OF TWO WILL BE FILLED WITH WATER AND AFTER THREE HOURS WILL BE CHECKED FOR LEAKAGE WITH NO DROP IN LEVEL. FOR EVERY MANHOLE NOT PASSING TEST FIVE MORE WILL BE TESTED AT THE DISCRETION OF THE DISTRICT'S REPRESENTATIVE

3. AIR TESTING:
 WHERE THE DIFFERENCE IN ELEVATION BETWEEN THE INVERT OF THE UPPER STRUCTURE AND THE INVERT OF THE LOWER STRUCTURE IS MORE THAN SIX FEET (6') AN AIR TEST WILL BE MADE.
 (A) AN AIR TEST WILL BE MADE
 THE TIME TAKEN TO LOSE ONE (1) POUND PER SQUARE INCH GAUGE PRESSURE FROM THREE (3) POUNDS PER SQUARE INCH GAUGE PRESSURE TO TWO (2) POUNDS PER SQUARE INCH GAUGE PRESSURE SHALL NOT BE LESS THAN THOSE SHOWN ON THE FOLLOWING TABLE

MAIN PIPE DIAMETER	MINIMUM TIME LOSE
6"	1 MINUTE
14"	2 MINUTES
18"	3 MINUTES
24"	4 MINUTES
30"	5 MINUTES
36"	6 MINUTES

IF THE TIME IS LESS THAN LISTED IN THE TABLE ABOVE THE CONTRACTOR SHALL MAKE SUCH REPAIRS AS ARE NECESSARY TO ELIMINATE EXCESSIVE LEAKAGE.

- NOTES:
- PROVIDE STAKES ON THE PROPERTY LINE OR PROPERTY LINES PRODUCED AT RIGHT ANGLES TO THE SEWER LINE AT THE CENTER LINE OF EACH MANHOLE.
 - NO REPRESENTATIVE OF THE COUNTY ENGINEER WILL SURVEY OR LAY OUT ANY PORTION OF THE WORK.
 - THE PRIVATE ENGINEER SHALL FURNISH THE COUNTY ENGINEER WITH GRADE SHEETS AND STATIONING FOR ALL HOUSE LATERALS AND "Y" BRANCHES AND SHALL PROVIDE STAKES FOR THEM AT THEIR PROPER LOCATIONS WITH STATIONING PLAINLY MARKED. ALL HOUSE LATERALS SHALL BE CONSTRUCTED IN A STRAIGHT ALIGNMENT AT RIGHT ANGLES FROM THE MAIN LINE SEWER EXCEPT AS SHOWN ON THE PLANS. HOUSE LATERALS FROM CHIMNEYS SHALL NOT HAVE AN ANGLE OF LESS THAN 45° WITH THE MAIN LINE SEWER. ANY CHANGE IN ALIGNMENT SHALL BE REQUESTED BY THE PRIVATE ENGINEER.
 - THE PRIVATE ENGINEER SHALL FURNISH THE HOUSE LATERAL DEPTH AT THE PROPERTY LINE BELOW THE TOP OF CURB ELEVATION FOR EACH HOUSE LATERAL ON THE GRADE SHEET.
 - NO REVISIONS SHALL BE MADE IN THESE PLANS WITHOUT THE APPROVAL OF THE COUNTY ENGINEER.
 - THE CONTRACTOR SHALL NOTIFY THE CONSTRUCTION DIVISION BY TELEPHONE, MADISON 9-472, EXT. 8158, AT LEAST TWENTY-FOUR HOURS BEFORE STARTING ANY WORK UNDER THE CONTRACT.
 - ALL STRUCTURES SHALL BE EITHER BRICK MANHOLES PER S-3 OR PRECAST CONCRETE MANHOLES PER S-5 OR S-6, EXCEPT AS NOTED.
 - USE STANDARD MANHOLE FRAMES AND COVERS, S-1, EXCEPT AS NOTED.
 - MANHOLE TOPS IN UNIMPROVED AREAS SHALL BE 36 INCHES ABOVE FINISHED GRADE.
 - USE EXTRA STRENGTH PIPE ALL PIPE IS STANDARD UNLESS SPECIFIED OTHERWISE.
 - USE MECHANICAL COMPRESSION JOINTS FOR ALL V.C.P. JOINTS PER SPEC. SECS. 24, 26 & 4.
 - IF A POWER POLE IS WITHIN THREE FEET OF THE SEWER, THE SEWER SHALL BE ENCASED, PER S-23, TWO FEET ON EACH SIDE FROM THE POINT OF INTERFERENCE.
 - IF DURING THE COURSE OF CONSTRUCTION IT IS DETERMINED THAT THERE IS LESS THAN FOUR FEET OF COVER OVER THE TOP OF A MAIN LINE OF HOUSE LATERAL V.C.P. SEWER WHICH IS NOT INDICATED ON THE PLANS, THE PIPE SHALL BE ENCASED PER S-23, UNLESS OTHERWISE APPROVED BY THE COUNTY ENGINEER.
 - HOUSE LATERALS TO BE CONSTRUCTED WITH INVERTS AT PROPERTY LINE 6 FEET BELOW CURB GRADE EXCEPT AS NOTED.
 - RESURFACE ALL TRENCHES WITHIN PAVED AREAS TO MEET L.A. COUNTY ROAD DEPT. OR CALIFORNIA STATE HIGHWAY REQUIREMENTS IN ACCORDANCE WITH PERMITS.
 - FOR ALLOWABLE LEAKAGE TEST USE FORMULA NO. 3, SPEC. SEC. 54.
 - ALL STATE AND LOCAL TRENCH SAFETY ORDERS WILL BE STRICTLY ENFORCED.
 - SPECIAL BACKFILL IN DESIGNATED AREAS
 (A) BACKFILL TRENCHES AND REPLACE BYTES BATHY RECOVERED SO AS TO ACHIEVE THE NATURAL OR FINISHED GRADES AND SLOPES SHOWN ON THE GRADING PLAN APPROVED FOR THIS TRACT BY THE BUILDING AND SAFETY DIVISION.
 (B) ALL BACKFILL AND EARTH REPLACES SHALL BE COMPACTED TO A MINIMUM OF 90% OF MAXIMUM DENSITY PER A.S.T.M. STANDARD METHOD OF TEST D-1557-57 AS MODIFIED. ACCEPTABLE CERTIFICATION OF SUCH COMPACTION SHALL BE SUBMITTED TO THE CONSTRUCTION DIVISION.
 - "Y" BRANCHES MAY BE USED IN PLACE OF "T" BRANCHES EXCEPT AS NOTED.
 - PIPING IN CIRCLE INDICATES INVERT DEPTH BELOW SURFACE OVER SEWER.

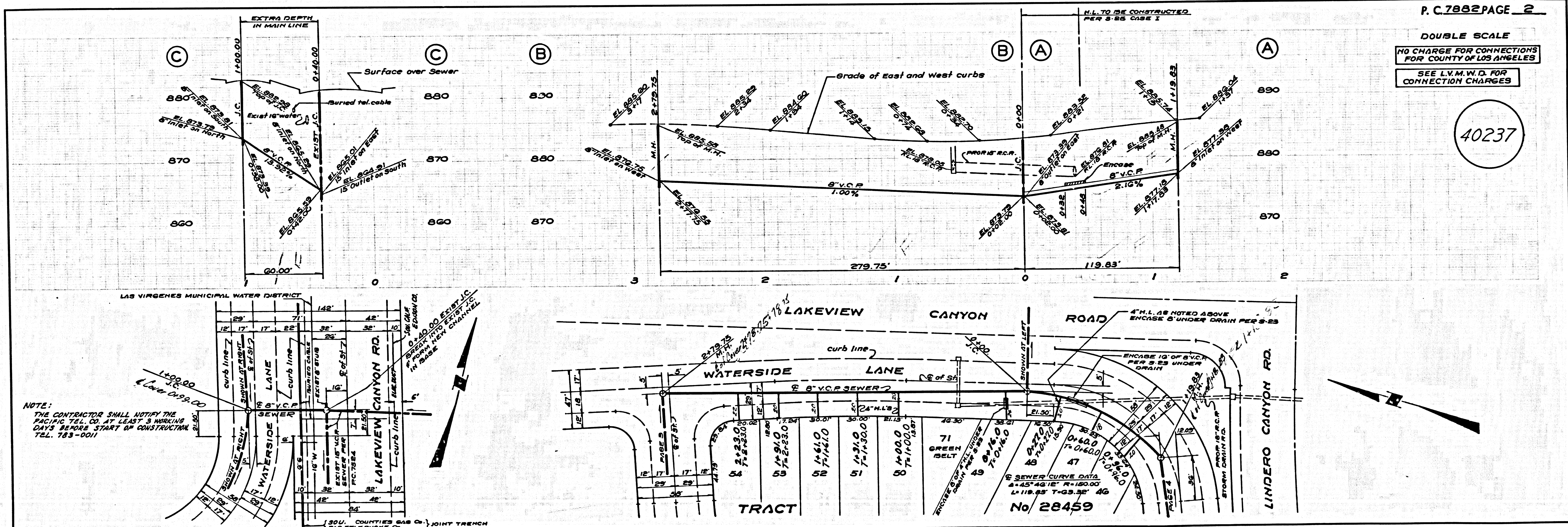
COLLECT CHARGES AS INDICATED
 J. N. 0250.02

DO NOT ISSUE HOUSE CONNECTION PERMITS UNTIL OUTLET IS AVAILABLE

NOTE:
 GRADES TO WHICH THIS IMPROVEMENT IS TO BE CONSTRUCTED ARE SHOWN ON PLANS AND PROFILES. GRADE POINTS FOR TOP OF CURB, CENTER LINE OF STREETS, OR CENTER LINE OF ALLEYS ARE SHOWN BY CIRCLES ON PROFILES. AT ALL POINTS BETWEEN DESIGNATED POINTS THE GRADE SHALL BE ESTABLISHED SO AS TO CONFORM TO A STRAIGHT LINE DRAWN BETWEEN SAID DESIGNATED POINTS. ELEVATIONS ARE IN FEET ABOVE U.S.C. & G.S. MEAN LEVEL DATUM OF 1929.
 THIS DRAWING AND THE DATA HEREON ARE HEREBY MADE A PART OF THE SPECIFICATIONS.
 WORK SHALL BE CONSTRUCTED IN ACCORDANCE TO STANDARD SPECIFICATIONS DATED MAY 22, 1956 AS REVISION FILED IN THE OFFICE OF THE COUNTY ENGINEER AND SHALL BE PROSECUTED ONLY IN THE PRESENCE OF THE COUNTY ENGINEER.
 APPROVAL OF THIS PLAN BY THE COUNTY OF LOS ANGELES DOES NOT CONSTITUTE A REPRESENTATION AS TO THE ACCURACY OF THE LOCATION OF OR THE EXISTENCE OR NON-EXISTENCE OF ANY UNDERGROUND UTILITY PIPE, OR STRUCTURE WITHIN THE LIMITS OF THIS PROJECT. THIS NOTE APPLIES TO ALL PAGES.
 IF WORK IS TO BE DONE IN A STATE HIGHWAY, A PERMIT MUST BE OBTAINED FROM THE STATE OF CALIFORNIA, DIVISION OF HIGHWAYS, THE SOUTH SPRING STREET, LOS ANGELES, CALIFORNIA.

COUNTY OF LOS ANGELES, CALIFORNIA
 JOHN A. LAMBE, COUNTY ENGINEER
 LAS VIRGENES MUNICIPAL WATER DISTRICT
 APPROVED BY: Richard M. Chin
 ASSISTANT SANITATION ENGINEER
 SUBMITTED BY: Jack C. ...
 REGIONAL ENGINEER
 CHECKED BY: ...
 REG. C.E. NO. 12652

J. N. 0250.02



P.C. 7882 PAGE 2

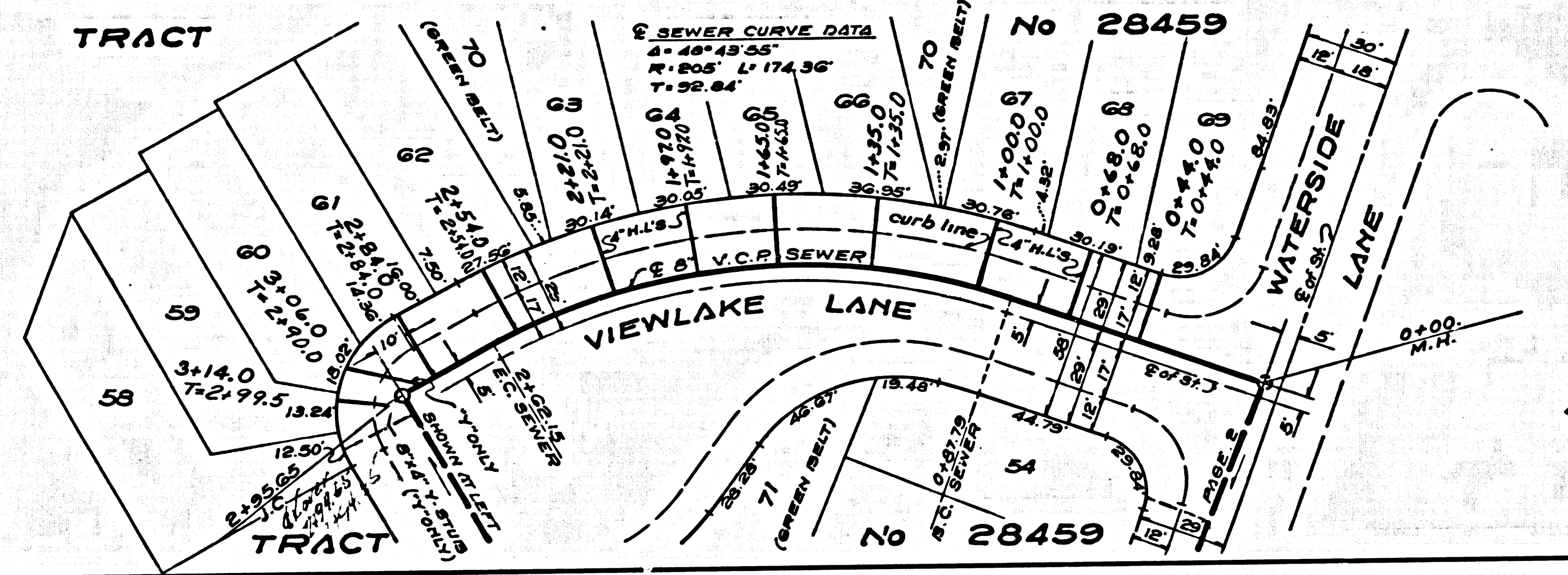
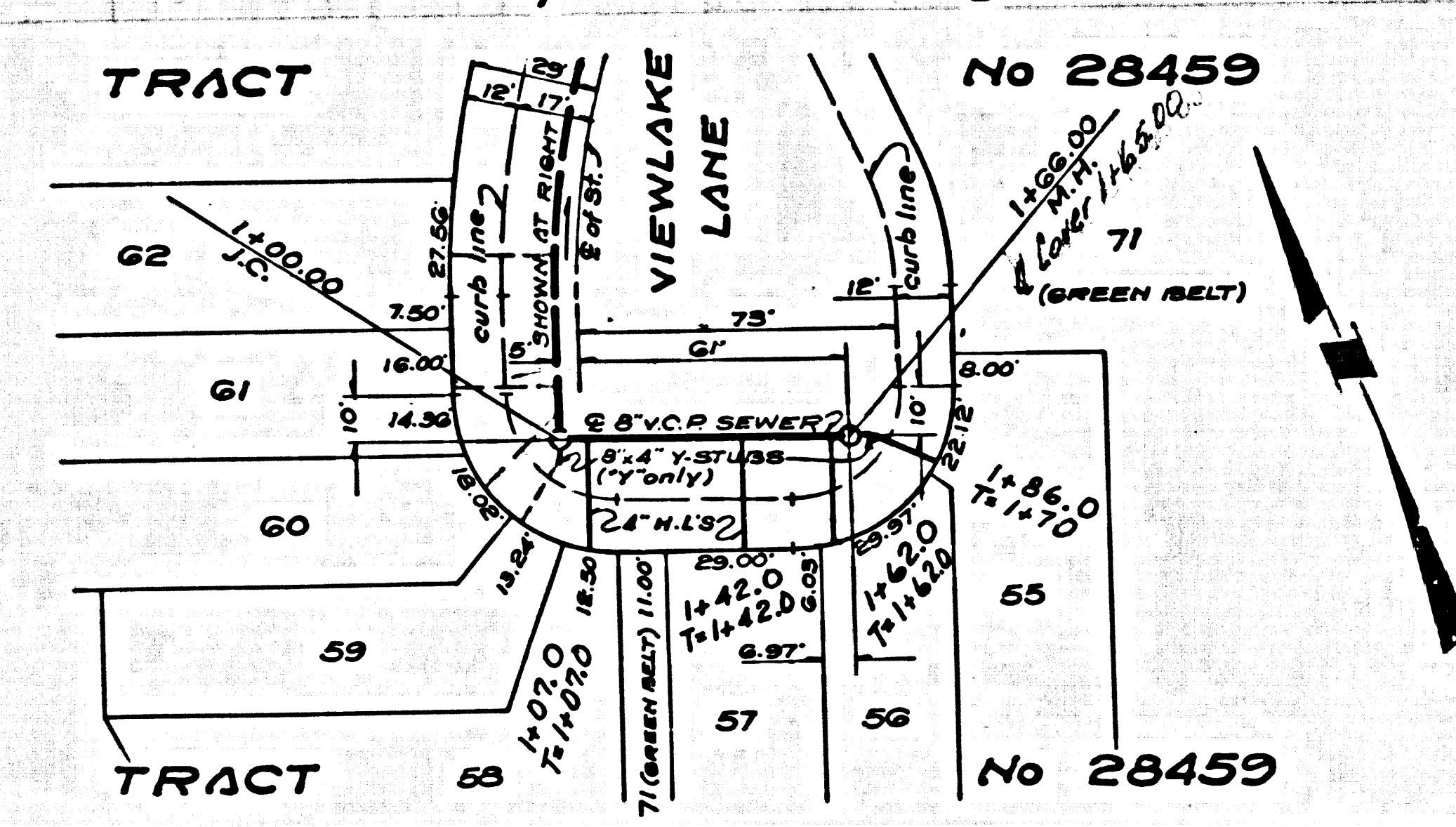
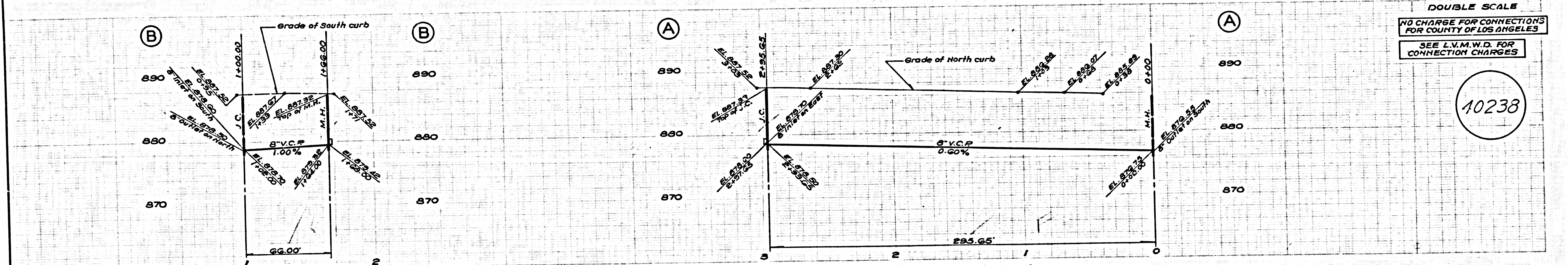
DOUBLE SCALE
 NO CHARGE FOR CONNECTIONS FOR COUNTY OF LOS ANGELES
 SEE L.V.M.W.D. FOR CONNECTION CHARGES

40237

NOTE:
 THE CONTRACTOR SHALL NOTIFY THE PACIFIC TEL. CO. AT LEAST 3 WORKING DAYS BEFORE START OF CONSTRUCTION TEL. 783-0011

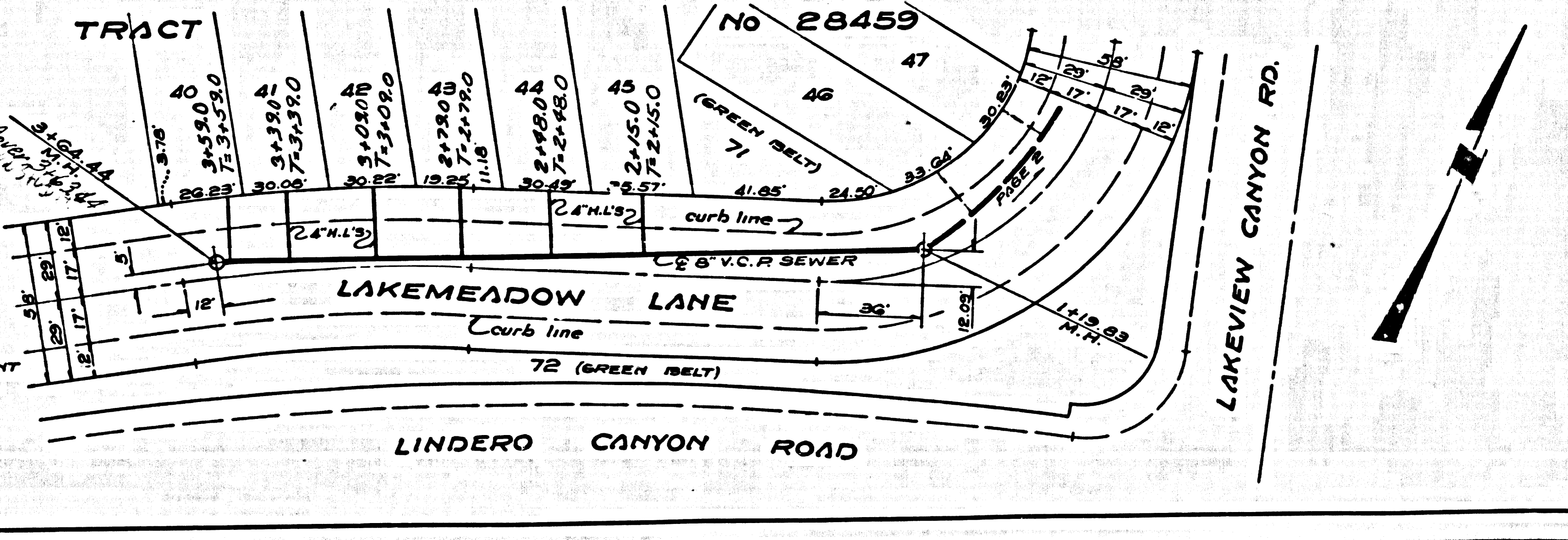
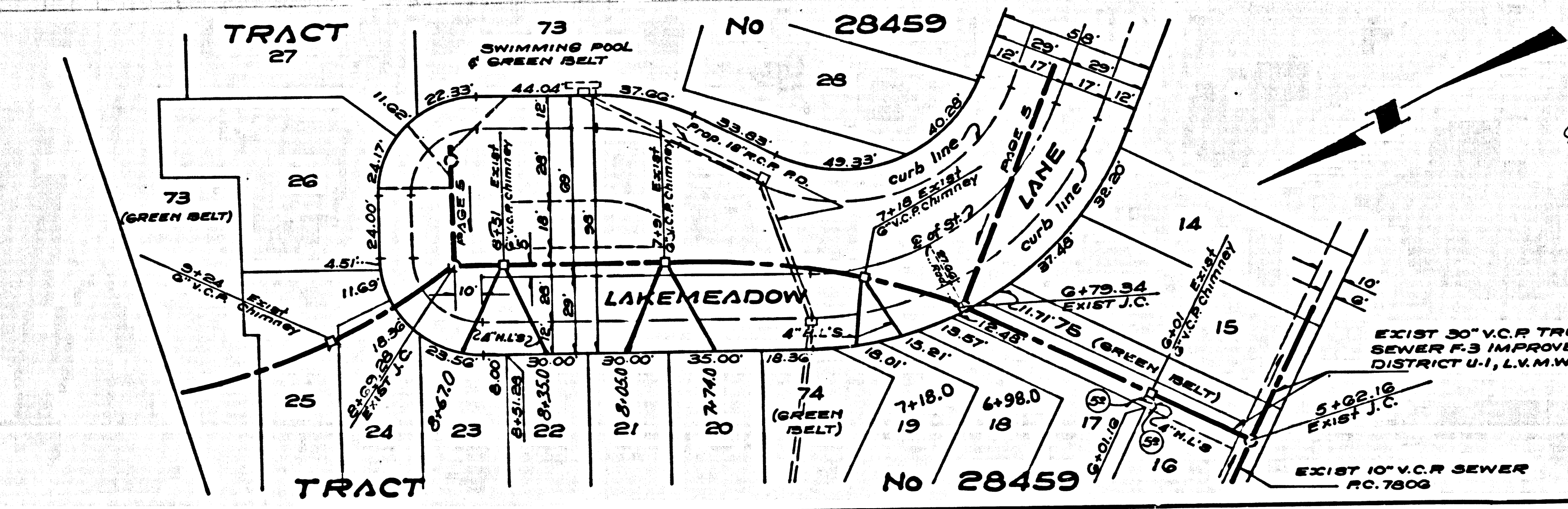
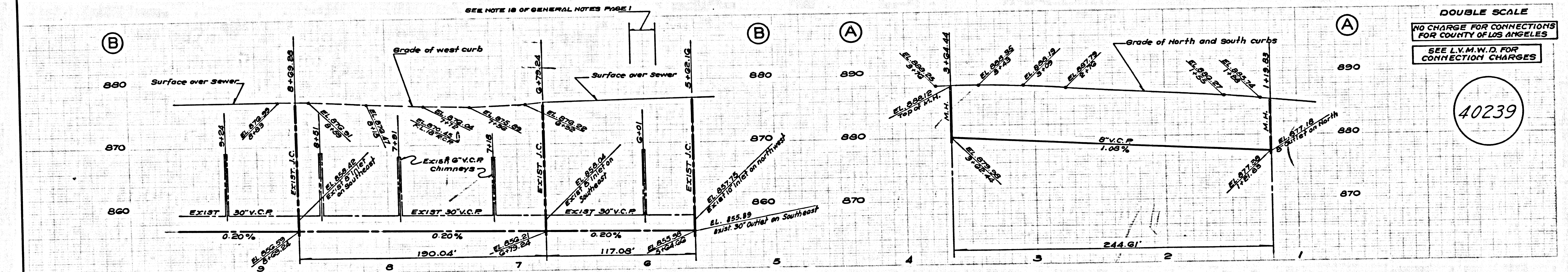
DOUBLE SCALE
NO CHARGE FOR CONNECTIONS
FOR COUNTY OF LOS ANGELES
SEE L.V.M.W.D. FOR
CONNECTION CHARGES

10238

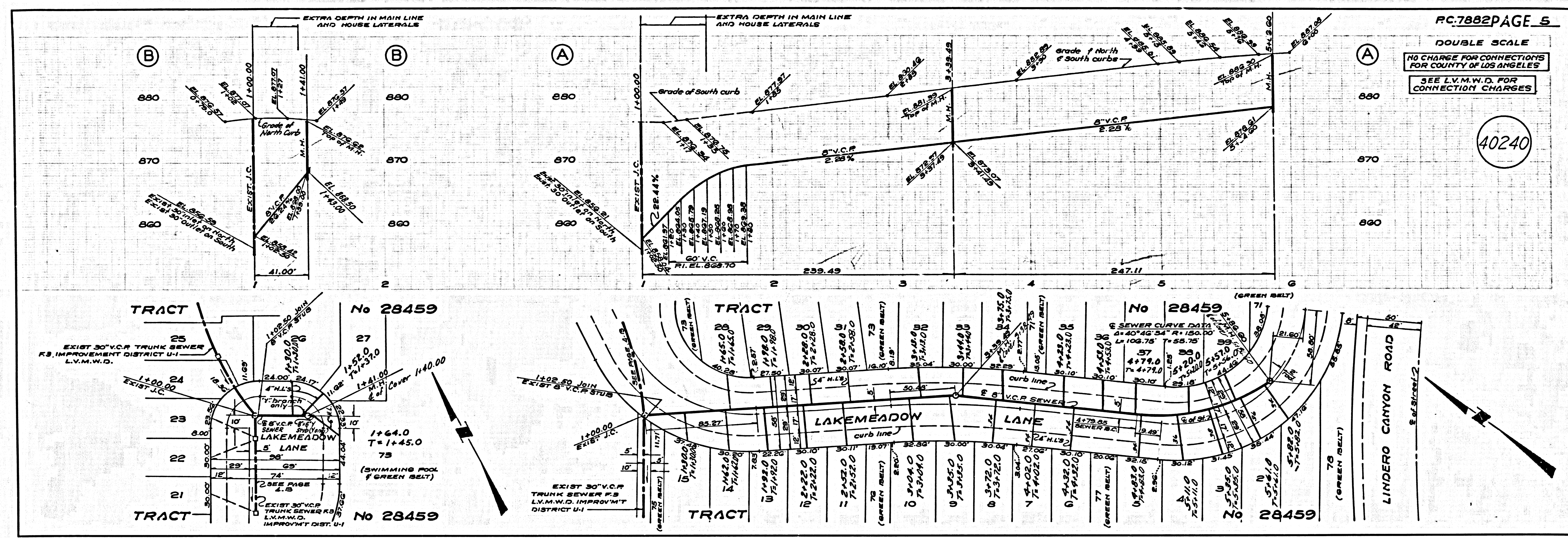


DOUBLE SCALE
NO CHARGE FOR CONNECTIONS
FOR COUNTY OF LOS ANGELES
SEE L.V.M.W.D. FOR
CONNECTION CHARGES

40239



S
5
15' C 1085
TRACT NO 28459



PC.7882 PAGE 5
 DOUBLE SCALE
 NO CHARGE FOR CONNECTIONS
 FOR COUNTY OF LOS ANGELES
 SEE L.V.M.W.D. FOR
 CONNECTION CHARGES
 40240

