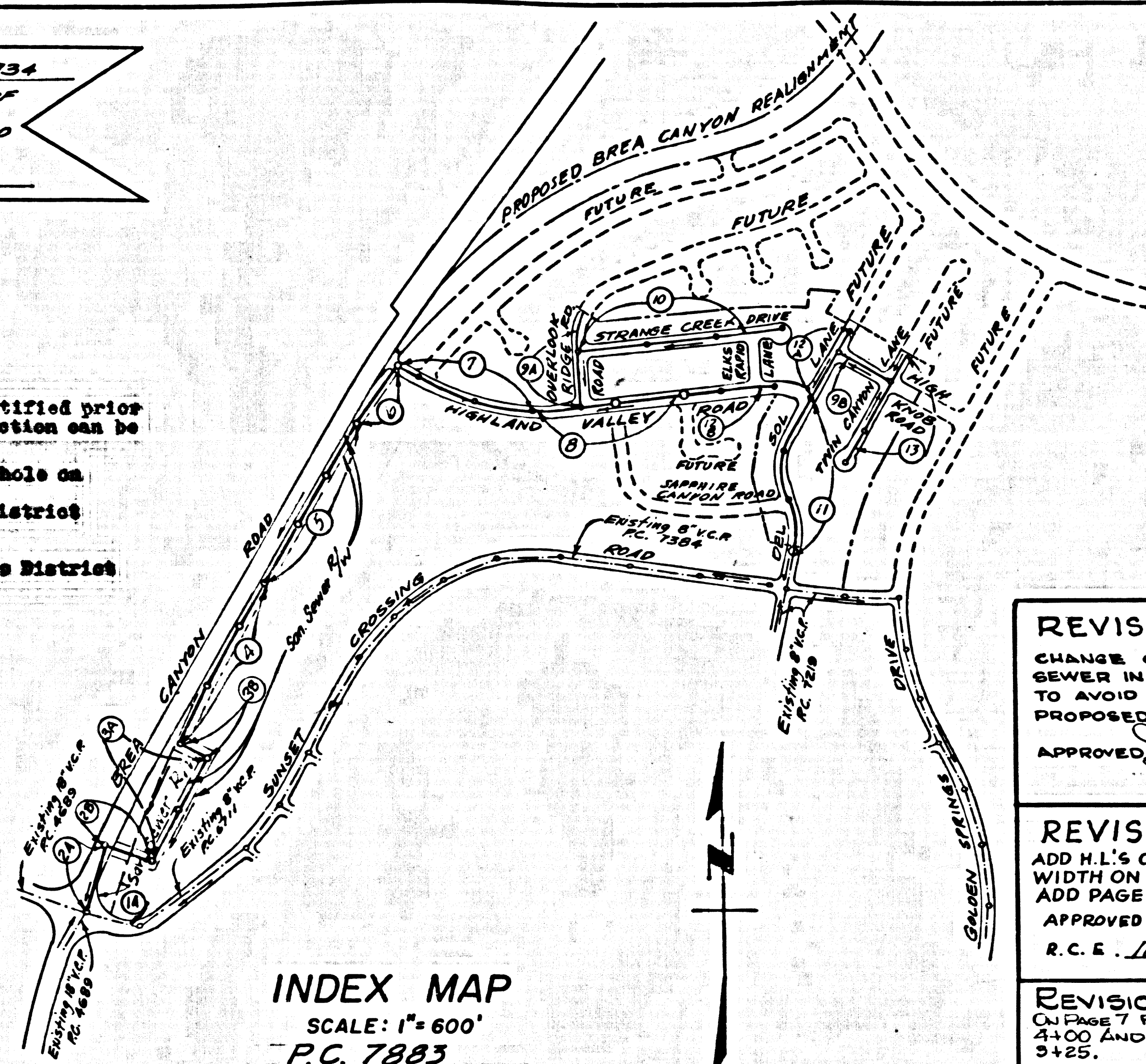


B.M. 89 2065 ELEV. 765.734
 P.B.M. THE IN CONC. BASE OF
 FENCE POST 15 FT. S. OF GATE 51
 FT. W. CL. BREA CANYON RD. + 10
 MI. N. OF DIAMOND BAR BLVD.
 OTTERBEIN QUAD. 1965

County Sanitation Districts shall be notified prior to the following so that required inspection can be made (Phone 3371025):

- (1) Commencement of construction of manhole on District trunk sewer.
- (2) Breaking into existing manhole on District trunk sewer.
- (3) Core drilling District trunk sewer.
- (4) Construction of house connections to District trunk sewer.
- (5) Acceptance of the project.



INDEX MAP
 SCALE: 1" = 600'
 P.C. 7883

ALL CUT AND FILL SHOWN ON PLANS MUST BE COMPLETED PRIOR TO CONSTRUCTION OF THIS SEWER.

REVISION:
 CHANGE OF ALIGNMENT FOR SEWER IN BREA CANYON RD. TO AVOID INTERFERENCE WITH PROPOSED STORM DRAIN.
 APPROVED: *[Signature]*
 DATE: 10/17/67

REVISION:
 ADD H.L.'S ON PAGE 3, CHANGE R/W WIDTH ON PGS 2 B & 3A; AND ADD PAGE 3.
 APPROVED: *[Signature]*
 DATE: 10/17/67

REVISION: ADJUST FL & TC ELEV ON PGS 7 FROM STA 1400 TO STA 1400 AND ADJ LATERAL AT STA 1425.
 APPROVED: *[Signature]*
 DATE: 10/17/67

LOTS 1, 2, & 3 ARE SERVED BY SEWER IN SUNSET CROSSING ROAD P.C. 7219

DOUBLE SCALE
 SAN DIMAS BLDG. DIST. NO. 10

- NOTE:
1. PROVIDE STAKES ON THE PROPERTY LINE OR PROPERTY LINES PRODUCED AT RIGHT ANGLES TO THE SEWER LINE AT THE CENTER LINE OF EACH MANHOLE.
 2. NO REPRESENTATIVE OF THE COUNTY ENGINEER WILL SURVEY OR LAY OUT ANY PORTION OF THE WORK.
 3. THE PRIVATE ENGINEER SHALL FURNISH THE COUNTY ENGINEER WITH GRADE SHEETS AND STATIONINGS FOR ALL HOUSE LATERALS AND "T" BRANCHES AND SHALL PROVIDE STAKES FOR THESE AT THEIR PROPER LOCATIONS WITH STATIONING PLAINLY MARKED. ALL HOUSE LATERALS SHALL BE CONSTRUCTED IN A STRAIGHT ALIGNMENT AT RIGHT ANGLES FROM THE MAIN LINE SEWER EXCEPT AS SHOWN ON THE PLANS. HOUSE LATERALS FROM COMMENTS SHALL NOT HAVE AN ANGLE OF LESS THAN 45° WITH THE MAIN LINE SEWER. ANY CHANGE IN ALIGNMENT SHALL BE REQUESTED IN WRITING BY THE PRIVATE ENGINEER.
 4. THE PRIVATE ENGINEER SHALL FURNISH THE HOUSE LATERAL SHEETS AT THE PROPERTY LINE MEAS. TO THE TOP OF CURB ELEVATION FOR EACH HOUSE LATERAL ON THE GRADE SHEET.
 5. NO REVISIONS SHALL BE MADE IN THESE PLANS WITHOUT THE APPROVAL OF THE COUNTY ENGINEER.
 6. THE CONTRACTOR SHALL NOTIFY THE CONSTRUCTION DIVISION BY TELEPHONE, MANSON 9-88, EXT. 8188, AT LEAST TWENTY-FOUR HOURS BEFORE STARTING ANY WORK UNDER THIS CONTRACT.
 7. ALL STRUCTURES SHALL BE EITHER BRICK MANHOLES PER S-3 OR PRECAST CONCRETE MANHOLES PER S-5 OR S-6 EXCEPT AS NOTED.
 8. USE STANDARD MANHOLE FRAMES AND COVERS, S-18, EXCEPT AS NOTED.
 9. MANHOLE TOPS: IN UNIMPROVED RIGHTS-OF-WAY TO BE SIX INCHES ABOVE FINISHED GRADE.
 10. USE 12" DIA. ENAMELED PIPE, ALL PIPE IS STANDARD SIZE EXCEPT AS NOTED.
 11. USE MECHANICAL COMPRESSION JOINTS FOR ALL V.C.P. JOINTS PER SPEC. SEC. 36, 36.4 & 36.4.1.
 12. IF A POWER POLE IS WITHIN THREE FEET OF THE SEWER, THE SEWER SHALL BE ENCASED, PER S-23, TWO FEET ON EACH SIDE FROM THE POINT OF INTERFERENCE.
 13. IF DURING THE COURSE OF CONSTRUCTION IT IS DETERMINED THAT THERE IS LESS THAN FOUR FEET OF COVER OVER THE TOP OF A MAIN LINE OR HOUSE LATERAL V.C.P. SEWER WHICH IS NOT INDICATED ON THE PLANS, THE PIPE SHALL BE ENCASED PER S-23, UNLESS OTHERWISE APPROVED BY THE COUNTY ENGINEER.
 14. HOUSE LATERALS TO BE CONSTRUCTED WITH INVERTS AT PROPERTY LINE 6 FEET BELOW CURB GRADE EXCEPT AS NOTED.
 15. RESURFACE ALL TRENCHES WITHIN PAVED AREAS TO MEET L.A. COUNTY ROAD DEPT. OR CALIFORNIA STATE HIGHWAY REQUIREMENTS IN ACCORDANCE WITH PERMITS.
 16. FOR ALLOWABLE LEAKAGE TEST USE FORMULA NO. 2, SPEC. 3, SEC. 54.
 17. ALL STATE AND LOCAL TRENCH SAFETY ORDERS WILL BE STRICTLY ENFORCED.
 18. TEE BRANCHES MAY BE USED INSTEAD OF WYE BRANCHES IN ALL LOCATIONS EXCEPT AS NOTED.
 19. ALL JOINTS BETWEEN CAST IRON PIPE AND VITRIFIED CLAY PIPE SHALL BE MADE WITH A RUBBER GLENE JOINT WITH JOOP IF NECESSARY PER STANDARD SPECIFICATIONS SEC. 36 OR APPROVED EQUAL.

NO CONNECTIONS FOR THE DISPOSAL OF INDUSTRIAL WASTES SHALL BE MADE TO SEWERS SHOWN ON THESE DRAWINGS WITHOUT WRITTEN PERMISSION FROM THE COUNTY ENGINEER AND GENERAL MANAGER OF THE COUNTY SANITATION DISTRICTS.

NOTICE TO CONTRACTOR
 The existence and location of any underground utility pipes or structures shown on these plans are obtained by a search of the available records. To the best of my knowledge there are no existing utilities except as shown on these plans. The contractor is required to take due precautionary measures to protect the utility lines shown and any other lines of record not shown on these plans.
[Signature]
 10/17/67

COLLECT CHARGES AS INDICATED
[Signature]
 10-17-67

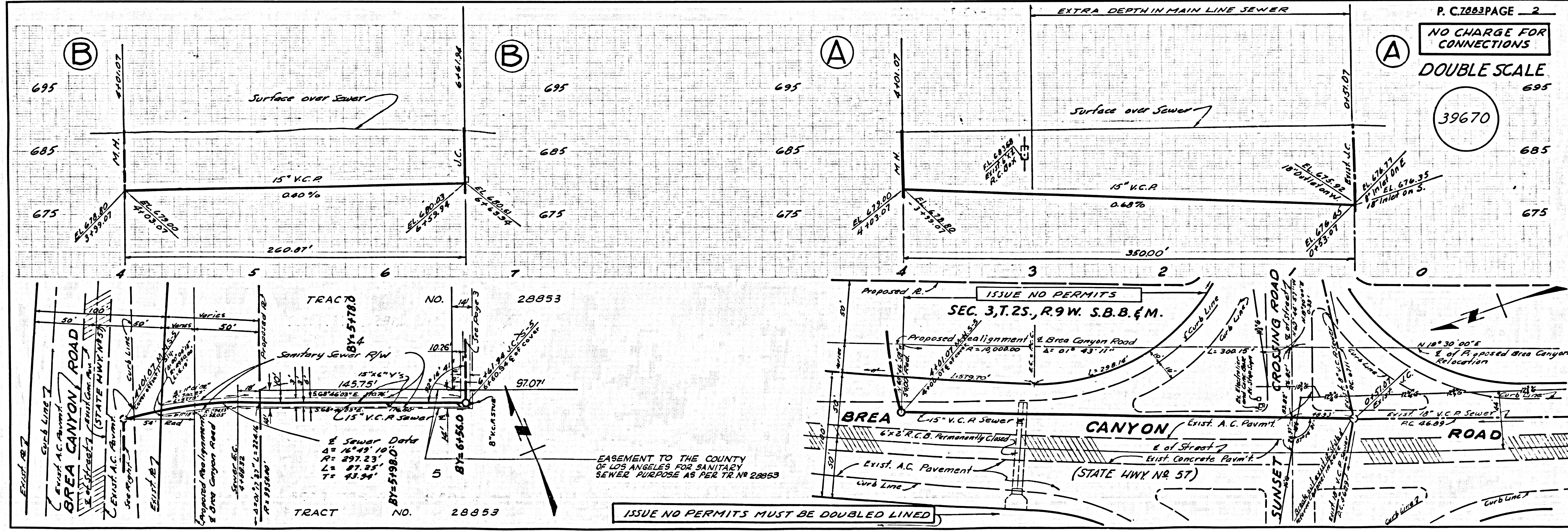
PROFILE, ALIGNMENT AND GRADE OF
 SANITARY SEWERS PAGE 1
 CONSTRUCTED IN

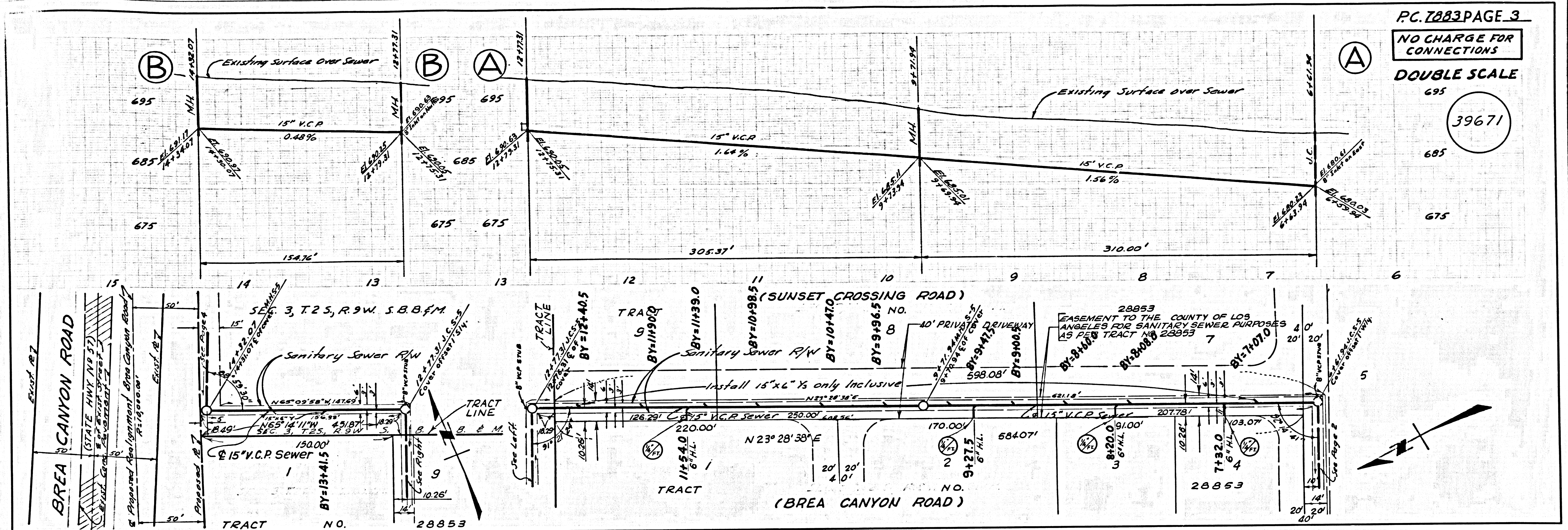
TRACT NO. 27535
 PRIVATE CONTRACT NO. 7883

W.S. 39
 7 SHEETS, 14 PAGES
 SCALE: 1" = 100' JUNE 1967
 PREPARED IN THE OFFICES OF
 TRI-STATE ENGINEERING CO.
[Signature]
 REG. C. E. NO. 12827

NOTE:
 GRADES TO WHICH THIS IMPROVEMENT IS TO BE CONSTRUCTED ARE SHOWN ON PLANS AND PROFILE. GRADE POINTS FOR TOP OF CURB, CENTER LINE OF STREET, OR CENTER LINE OF ALLEYS ARE SHOWN BY CIRCLES ON PROFILE. AT ALL POINTS BETWEEN DESIGNATED POINTS THE GRADE SHALL BE ESTABLISHED SO AS TO CONFORM TO A STRAIGHT LINE DRAWN BETWEEN SAID DESIGNATED POINTS. ELEVATIONS ARE IN FEET ABOVE U.S.C. & G.S. SEA LEVEL DATUM OF 1929.
 THIS DRAWING AND THE DATA HEREON ARE HEREBY MADE A PART OF THE SPECIFICATIONS. BEFORE WORK CAN BE STARTED, THE CONTRACTOR MUST OBTAIN A PERMIT TO OCCUPY COUNTY STREETS FROM THE L.A. COUNTY ROAD DEPT., DISTRICT OFFICE NO. 3, AND PAY A FEE TO THE COUNTY ENGINEER, ROOM 303, COUNTY ENGINEERING BUILDING, 100 WEST BROADWAY STREET, LOS ANGELES, CALIFORNIA. APPROVAL OF THIS PLAN BY THE COUNTY OF LOS ANGELES DOES NOT CONSTITUTE A REPRESENTATION AS TO THE ACCURACY OF THE LOCATION OR OF THE EXISTENCE OR NON-EXISTENCE OF ANY UNDERGROUND UTILITY PIPE, OR STRUCTURE WITHIN THE LIMITS OF THE PROJECT. THIS NOTE APPLIES TO ALL PAGES.
 IF WORK IS TO BE DONE IN A STATE HIGHWAY, A PERMIT MUST BE OBTAINED FROM THE STATE OF CALIFORNIA, DIVISION OF HIGHWAYS, 120 SOUTH BRINK STREET, LOS ANGELES, CALIFORNIA.

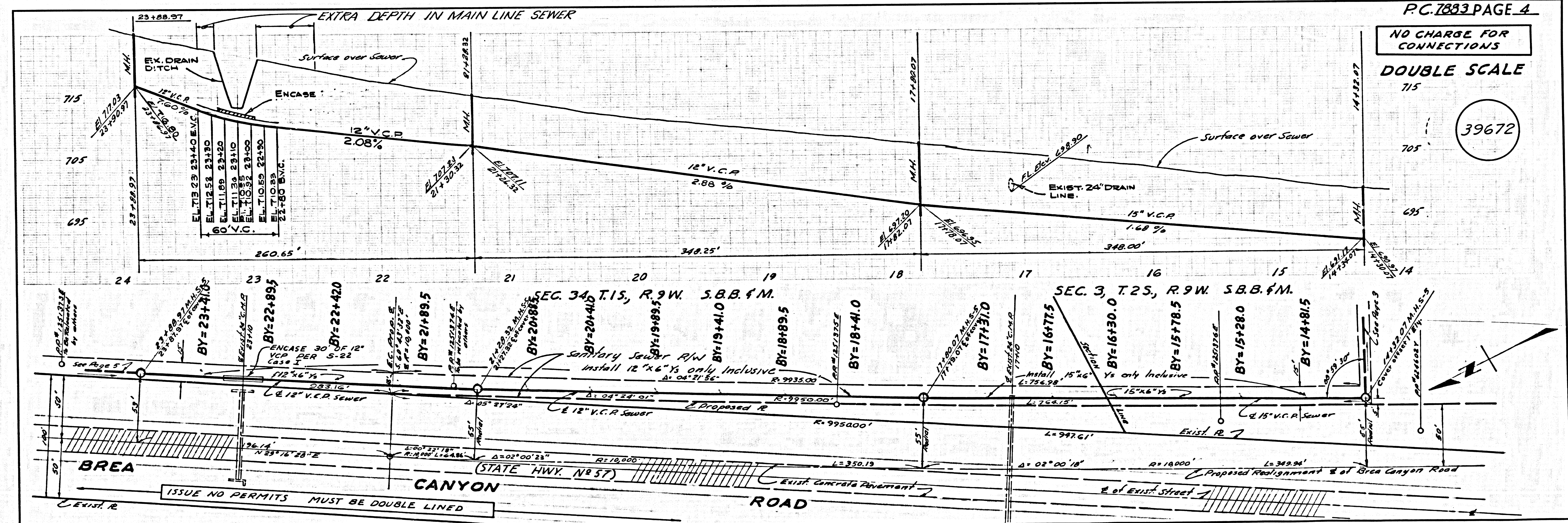
COUNTY OF LOS ANGELES, CALIFORNIA
 JOHN A. LAMBE, COUNTY ENGINEER J. D. PARKHURST, CHIEF ENGINEER
 CO. SAN. DIST. NO. 10
 APPROVED BY: *[Signature]* OFFICE ENGINEER
 SANITATION DIVISION ENGINEER
 CHECKED BY: *[Signature]* 10-17-67
 REG. C. E. NO. 12827
 J.N.0230.02



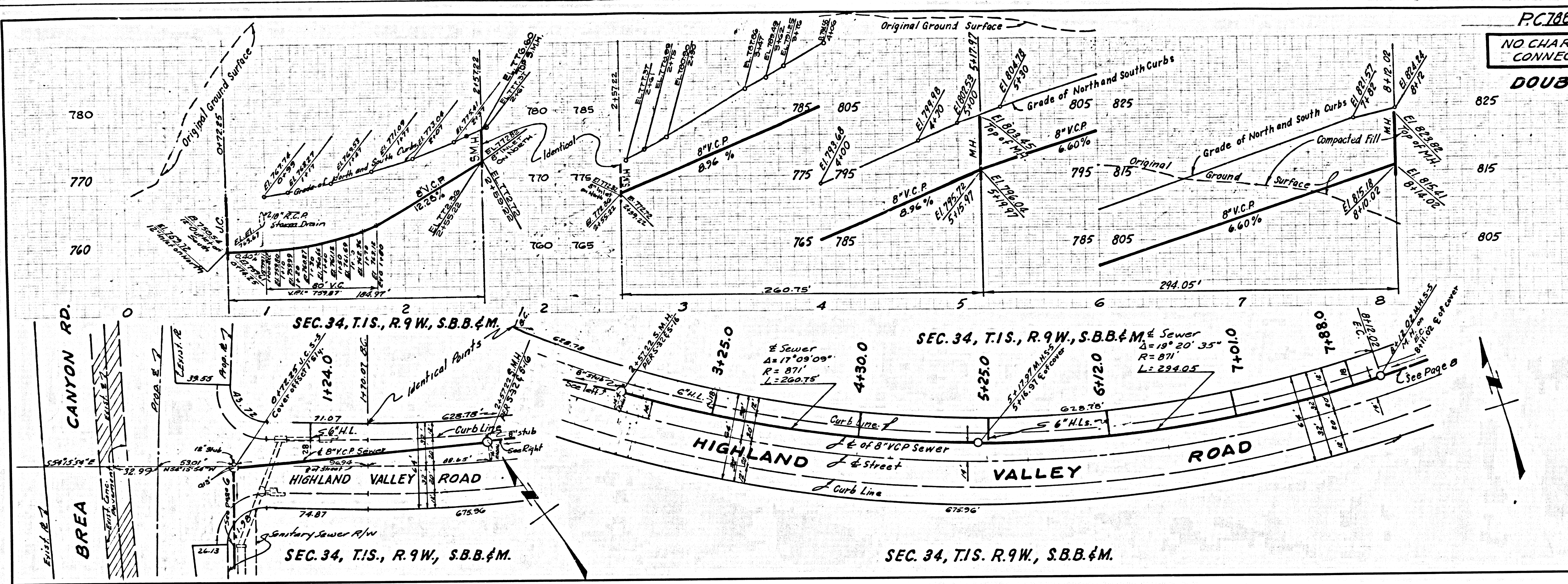


PC 7883

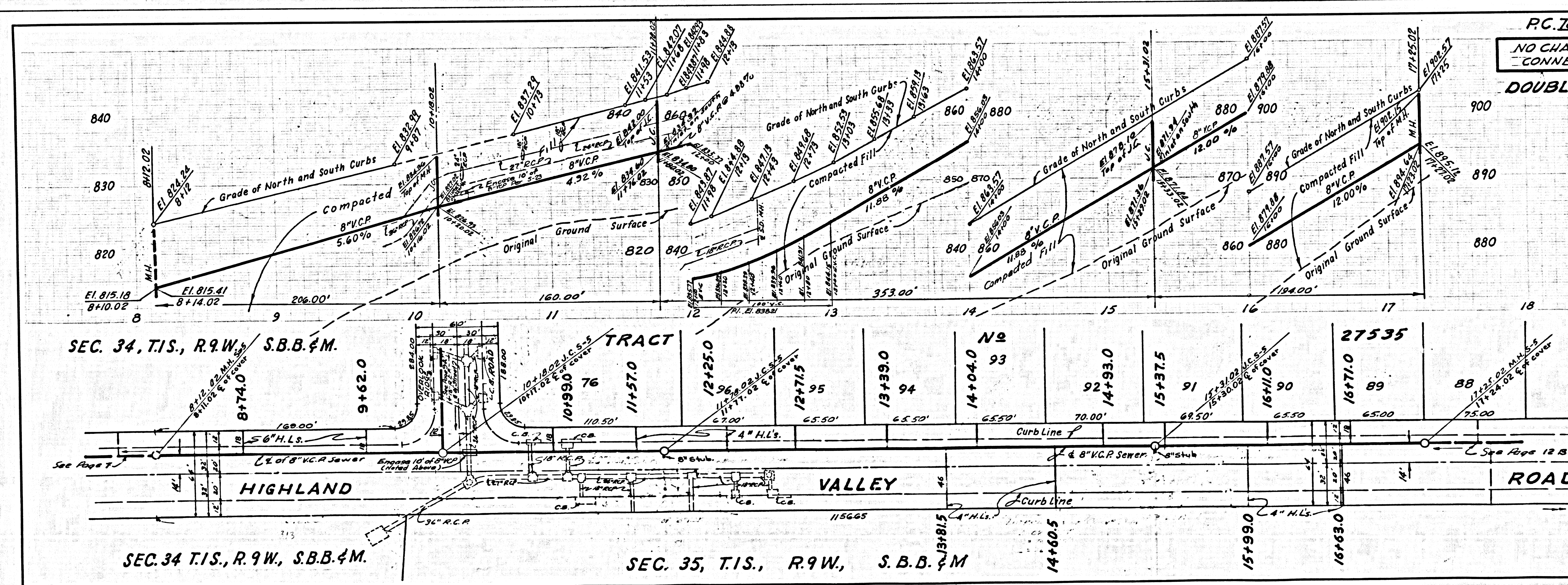
1K MO 51232



MAE 17932 L.A. COUNTY SEWER SHEET NO. 2 SO. CAL. BLUEPRINT CO.

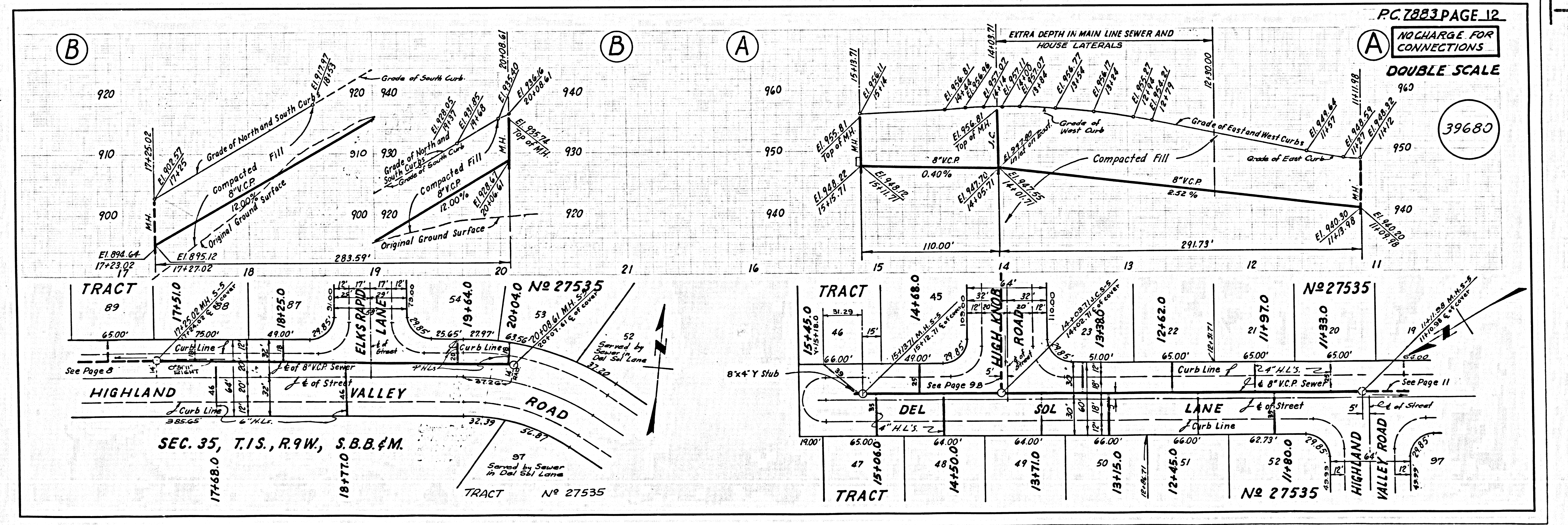
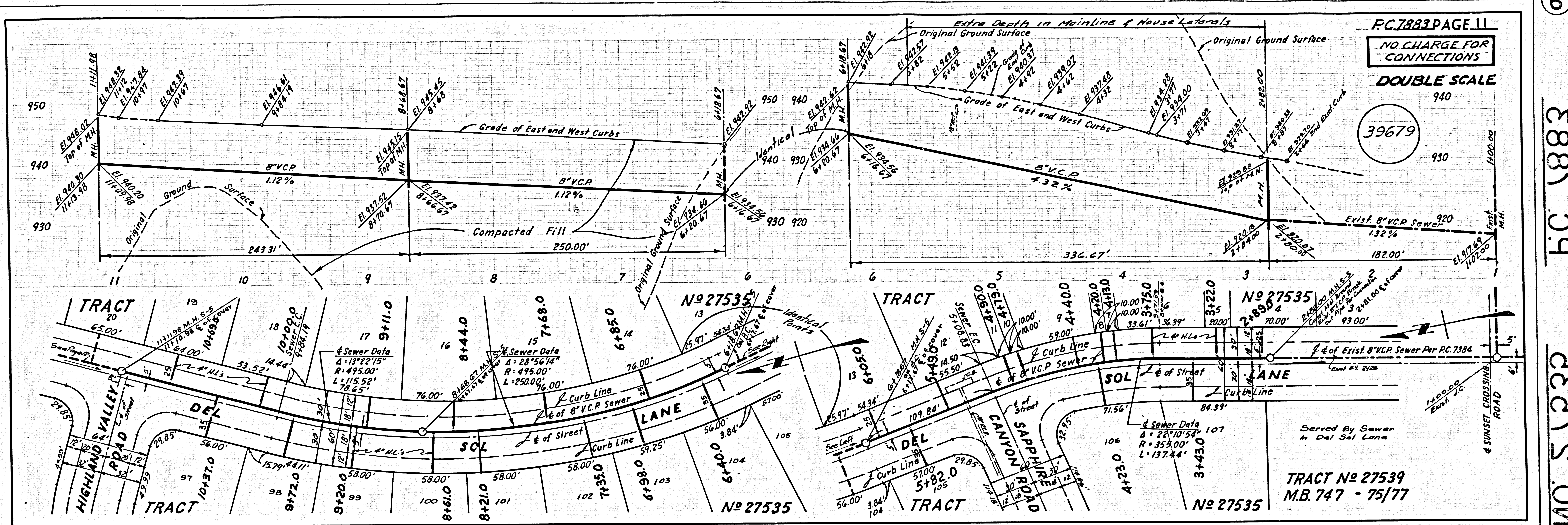


PC 7883 PAGE 7
 NO CHARGE FOR CONNECTIONS
 DOUBLE SCALE
 39675

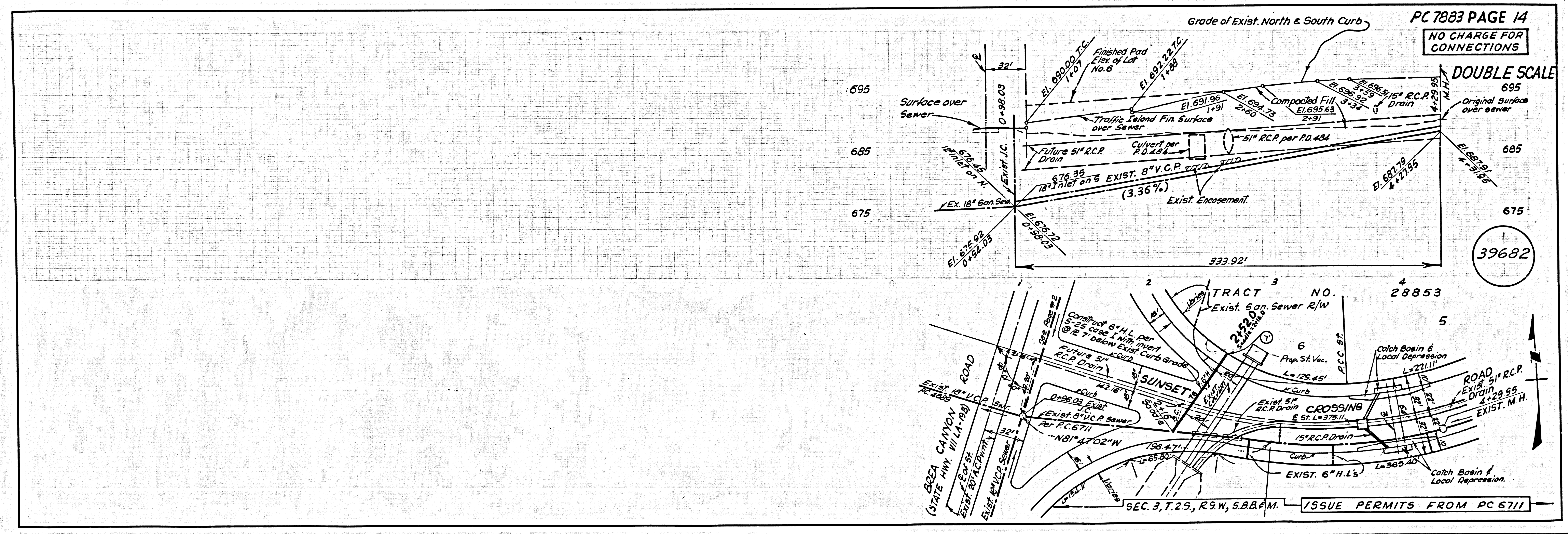
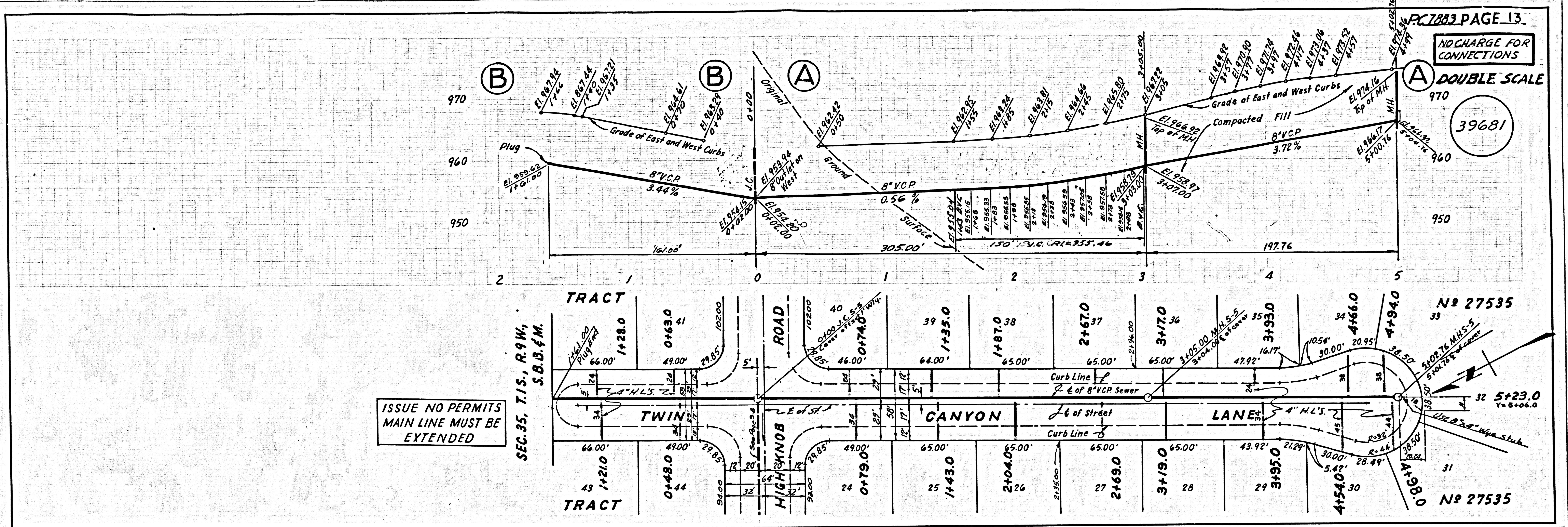


PC 7883 PAGE 8
 NO CHARGE FOR CONNECTIONS
 DOUBLE SCALE
 39676

4
 E 388 T 39
 2527 S 04 RT



6
 11 10 5 10 21
 B.C. 1883



PC 7883 PAGE 13
PC 7883 PAGE 14