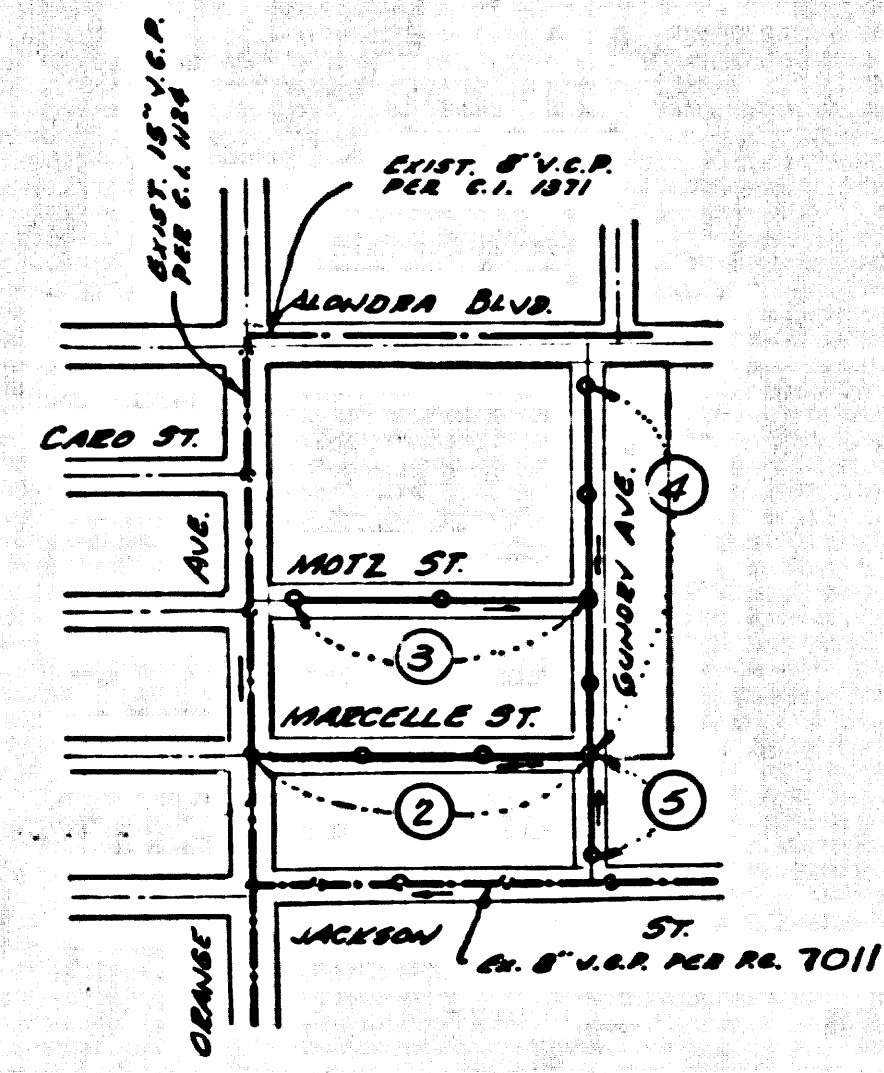


B.M. BY 6.0 ELEV. 65.397
 L+BN. mch. S.O. W. C.B. 25 FA# N.B.C.E. @ N.W. cor.
 Orange Ave + Alondra Blvd. 80ft. N. 30ft. W 1/4.
 Int. MKD (B.M.)
 BELLFLOWER QUAD. 19 65

NOTICE TO CONTRACTORS

The distance and location of any underground utility pipes or structures shown on these plans are obtained by a search of the available records. The Contractor is required to take due precautionary measures to protect the utility lines not of record or not shown on these plans.



INDEX MAP
 Scale 1"=600'
PARCEL MAP NO. 5
 ET. AL.

ALLOW NO CONNECTION PERMITS UNTIL SEWERS AND STREETS HAVE BEEN DEDICATED

NO CONNECTIONS FOR THE DISPOSAL OF INDUSTRIAL WASTES SHALL BE MADE TO SEWERS SHOWN ON THESE DRAWINGS WITHOUT WRITTEN PERMISSION FROM THE CHIEF ENGINEER AND GENERAL MANAGER OF THE COUNTY SANITATION DISTRICT.

PARAMOUNT BLDG. DIST. NO. 404

- NOTE:
1. PROVIDE STAKES ON THE PROPERTY LINE OR PROPERTY LINES PRODUCED AT RIGHT ANGLES TO THE SEWERY LINE AT THE CENTER LINE OF EACH MANHOLE.
 2. NO REPRESENTATIVE OF THE CITY ENGINEER WILL SURVEY OR LAY OUT ANY PORTION OF THE WORK.
 3. THE PRIVATE ENGINEER SHALL FURNISH THE CITY ENGINEER WITH GRADE SHEETS AND STATIONING FOR ALL HOUSE LATERALS AND "Y" BRANCHES AND SHALL PROVIDE STAKES FOR THEM AT THEIR PROPER LOCATIONS WITH STATIONING PLAINLY MARKED. ALL HOUSE LATERALS SHALL BE CONSTRUCTED IN A STRAIGHT ALIGNMENT AT RIGHT ANGLES FROM THE MAIN LINE SEWER EXCEPT AS SHOWN ON THE PLANS. HOUSE LATERALS FROM CHIMNEYS SHALL NOT HAVE AN ANGLE OF LESS THAN 45° WITH THE MAIN LINE SEWER. ANY CHANGE IN ALIGNMENT SHALL BE REQUESTED IN WRITING BY THE PRIVATE ENGINEER.
 4. THE PRIVATE ENGINEER SHALL FURNISH THE HOUSE LATERAL DEPTH AT THE PROPERTY LINE BELOW THE TOP OF CURB ELEVATION FOR EACH HOUSE LATERAL ON THE GRADE SHEET.
 5. NO REVISIONS SHALL BE MADE IN THESE PLANS WITHOUT THE APPROVAL OF THE CITY ENGINEER.
 6. THE CONTRACTOR SHALL NOTIFY THE CONSTRUCTION DIVISION BY TELEPHONE, MADISON 9-5700, EXT. 81381, AT LEAST TWENTY-FOUR HOURS BEFORE STARTING ANY WORK UNDER THIS CONTRACT.
 7. ALL STRUCTURES SHALL BE EITHER BRICK MANHOLES PER S-8 OR PRECAST CONCRETE MANHOLES PER S-8 OR S-9.
 8. USE STANDARD MANHOLE FRAMES AND COVERS, S-15.
 9. MANHOLE TOPS TO BE SET AT FINISHED GRADE.
 10. USE EXTRA STRENGTH PIPE. ALL PIPE IS STANDARD DEPTH EXCEPT AS NOTED.
 11. USE MECHANICAL COMPRESSION JOINTS FOR ALL V.C.P. JOINTS PER SPEC., SECT. 36, 41 & 42.
 12. IF A POWER POLE IS WITHIN THREE FEET OF THE SEWER, THE SEWER SHALL BE ENCASED, PER S-23, TWO FEET ON EACH SIDE FROM THE POINT OF INTERFERENCE.
 13. IF DURING THE COURSE OF CONSTRUCTION IT IS DETERMINED THAT THERE IS LESS THAN FOUR FEET OF COVER OVER THE TOP OF A MAIN LINE OR HOUSE LATERAL V.C.P. SEWER WHICH IS NOT INDICATED ON THE PLANS, THE PIPE SHALL BE ENCASED PER S-23, UNLESS OTHERWISE APPROVED BY THE CITY ENGINEER.
 14. HOUSE LATERALS TO BE CONSTRUCTED WITH INVERTS AT PROPERTY LINE 6 FEET BELOW CURB GRADE EXCEPT AS NOTED.
 15. RESURFACE ALL TRENCHES WITHIN PAVED AREAS TO MEET L.A. COUNTY ROAD DEPT. OR CALIFORNIA STATE HIGHWAY REQUIREMENTS IN ACCORDANCE WITH PERMITS.
 16. FOR ALLOWABLE LEASAGE TEST USE FORMULA NO. 2, SPEC. S. SEC. 34.
 17. ALL STATE AND LOCAL TRENCH SAFETY ORDERS WILL BE STRICTLY ENFORCED.
 18. USE "Y" BRANCHES ONLY.

County Sanitation Districts shall be notified prior to the following so that required inspection can be made (Phone: 636-3097):

- (1) Commencement of submittal of manhole on District Trunk Sewer.
- (2) Breaking into existing manhole on District Trunk Sewer.
- (3) Core drilling District Trunk Sewer.
- (4) Construction of house connections to District Trunk Sewer.
- (5) Acceptance of the project.

COLLECT CHARGES AS INDICATED
 Review A. J. Lee 10-16-67

INDUSTRIAL WASTE DIVISION
 REVIEWED BY: Ann Kelly

PROFILE, ALIGNMENT AND GRADE OF **P.C. 7887**
SANITARY SEWERS PAGE 1
 TO BE CONSTRUCTED IN
PARCEL MAP NO. 5
 ET. AL.

PRIVATE CONTRACT NO. 7887

W.S. 32
 3 SHEETS, 5 PAGES
 SCALE: VERT. 1"=4' HORIZ. 1"=40' JUNE 1967 39458

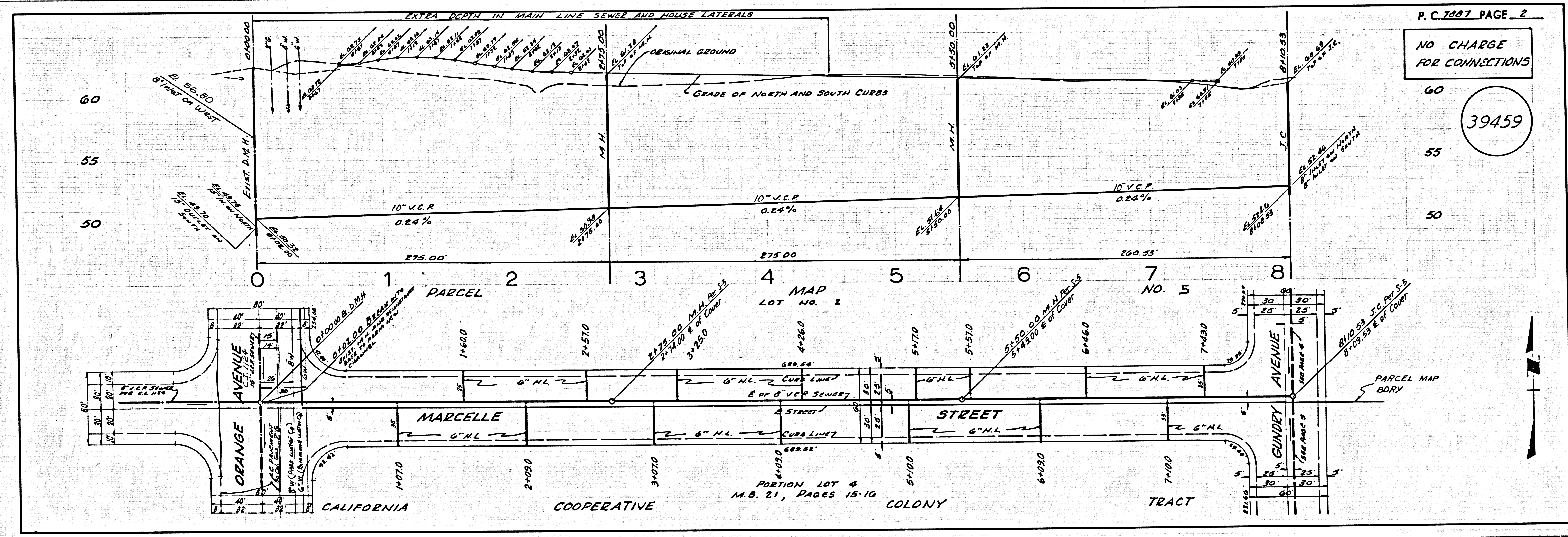
PREPARED IN THE OFFICES OF
 YOUNG & TEINDLE NELSON, INC.
 1579 BEACH BLVD.
 WESTMINSTER, CALIF.
 BY James E. White, Inc.
 REG. C. E. NO. 1355

FOR LEGEND SEE PLAN NO. S-1

NOTE:
 GRADES TO WHICH THIS IMPROVEMENT IS TO BE CONSTRUCTED ARE SHOWN ON PLANS AND PROFILE. GRADE POINTS FOR TOP OF CURBS, CENTER LINE OF STREETS, OR CENTER LINE OF ALLEYS ARE SHOWN BY CIRCLES ON PROFILES. ALL POINTS BETWEEN DESIGNATED POINTS THE GRADE SHALL BE ESTABLISHED SO AS TO CONFORM TO A STRAIGHT LINE DRAWN BETWEEN SAID DESIGNATED POINTS. ELEVATIONS ARE IN FEET ABOVE U.S.C. & G.S. SEA LEVEL DATUM OF 1929.
 THIS DRAWING AND THE DATA HEREON ARE HEREBY MADE A PART OF THE SPECIFICATIONS, AND ON FILE IN THE OFFICE OF THE ENGINEER AND SHALL BE PROSECUTED ONLY IN THE PRESENCE OF THE CITY ENGINEER.
 BEFORE WORK CAN BE STARTED, THE CONTRACTOR MUST OBTAIN A PERMIT TO REGRADE IN CITY STREETS FROM THE L.A. COUNTY ROAD DEPT., DISTRICT OFFICE NO. 5, AND MAKE A DEPOSIT WITH THE CITY ENGINEER'S OFFICE IN AMOUNT SUFFICIENT TO COVER THE COST OF CONSTRUCTION INSPECTION AND RECORD PLANS.
 APPROVAL OF THIS PLAN BY THE CITY ENGINEER DOES NOT CONSTITUTE A REPRESENTATION AS TO THE ACCURACY OF THE LOCATION OF OR THE EXISTENCE OR NON-EXISTENCE OF ANY UNDERGROUND UTILITY PIPE, OR STRUCTURE WITHIN THE LIMITS OF THIS PROJECT. THIS NOTE APPLIES TO ALL PAGES.
 IF WORK IS TO BE DONE IN A STATE HIGHWAY, A PERMIT MUST BE OBTAINED FROM THE STATE OF CALIFORNIA, DIVISION OF HIGHWAYS, 120 SOUTH SPRING STREET, LOS ANGELES, CALIFORNIA.

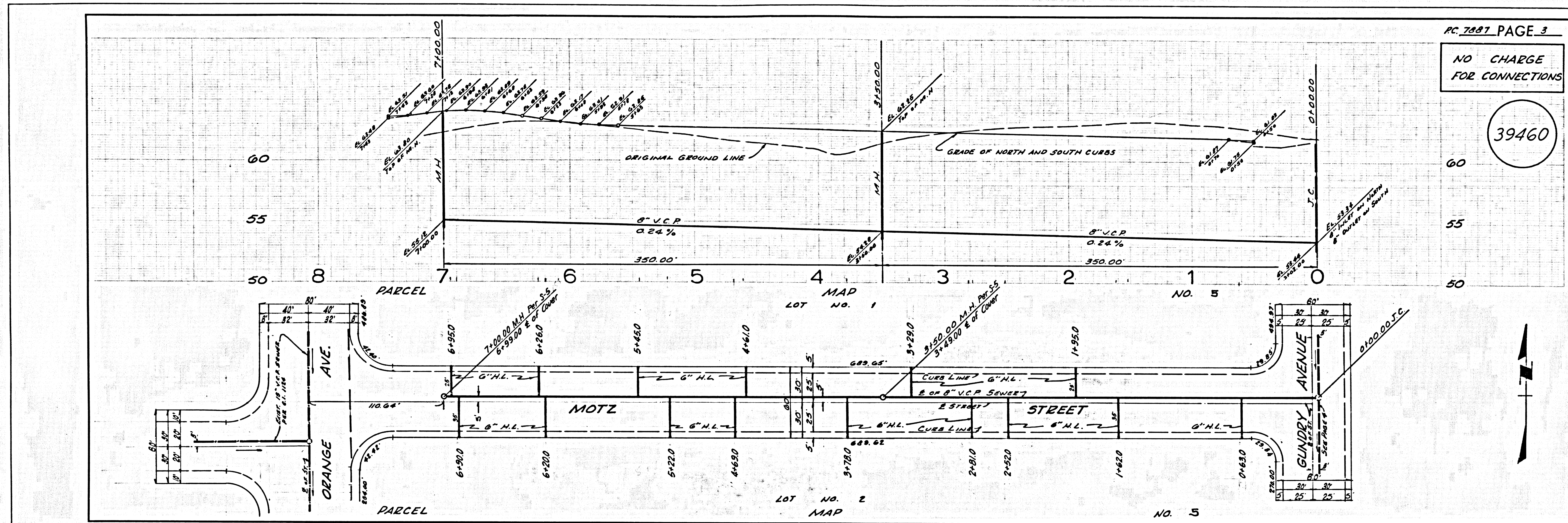
CITY OF PARAMOUNT, CALIFORNIA
 JOHN A. LAMBIE, CITY ENGINEER J. D. PARKHURST, CHIEF ENGINEER
 CO. SAN. DIST. NO. 404
 APPROVED BY: [Signature] REGIONAL ENGINEER APPROVED BY: [Signature] CHIEF ENGINEER

CHECKED BY: [Signature] 10/16/67
 REG. C.E. NO. 15731



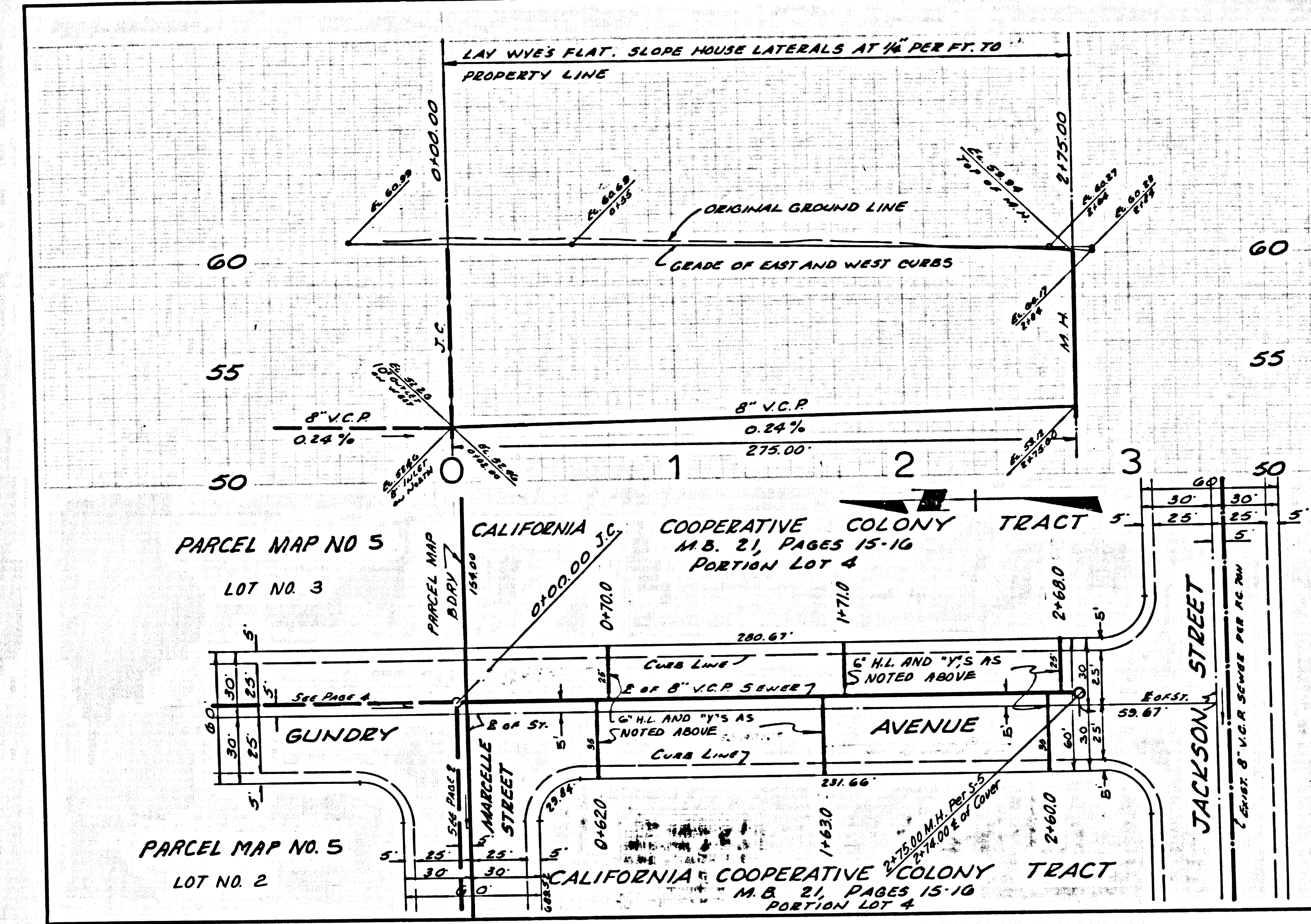
P.C. 7887 PAGE 2
NO CHARGE FOR CONNECTIONS

39458



39462

NO CHARGE
FOR CONNECTIONS



L.A. COUNTY SEWER SHEET NO. 8 WESTMINSTER BLUEPRINT CO.