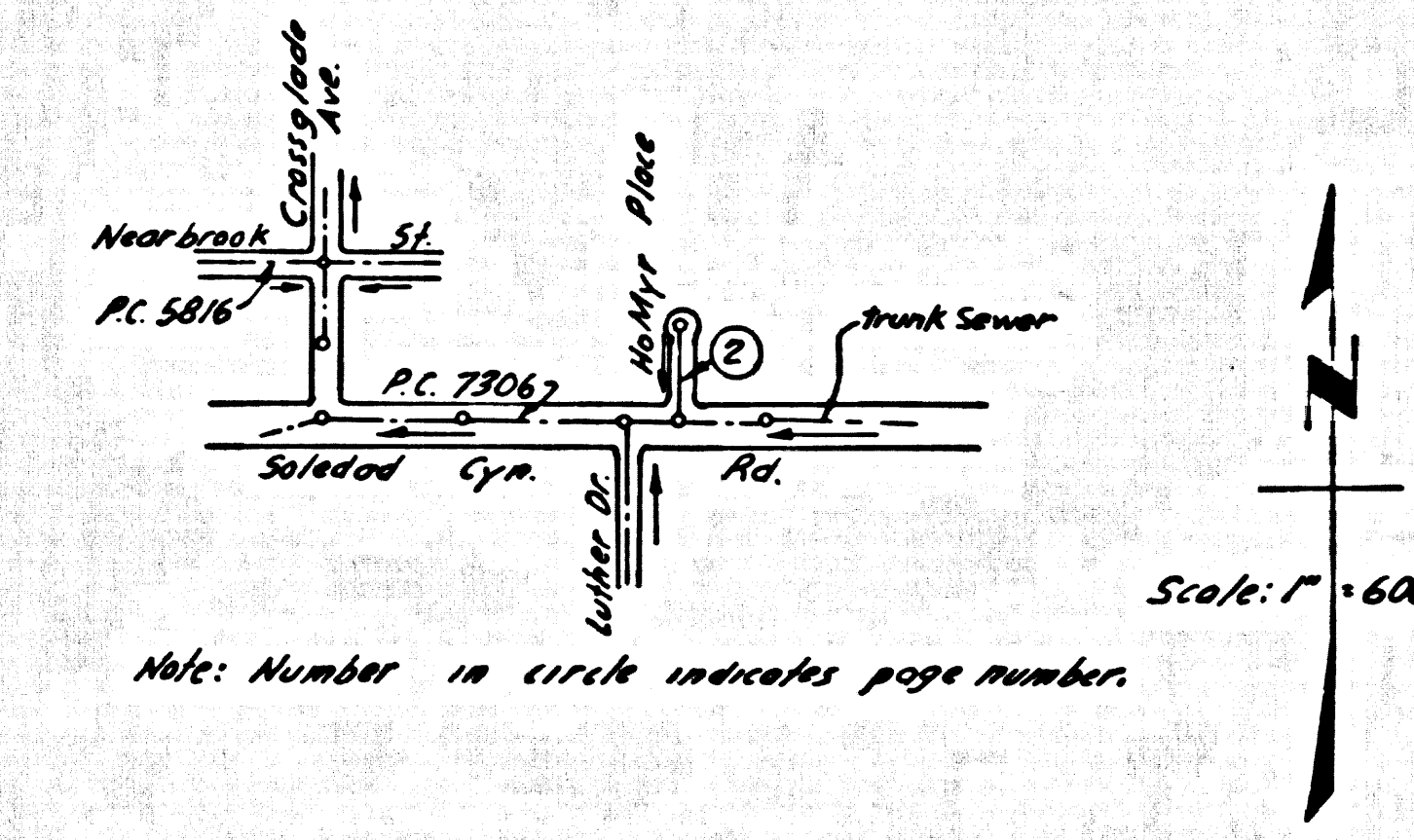


B.M. S.L. 936 ELEV. 108.750
 4' Broad Ely Co. & H. S. of B.C.A.
 at 5117' Cor. Myra Ave. & Soledad
 Cym. Rd. 60' N. S. 1/4 S. 1/4
 NEWHALL QUAD. 19 58

PRIVATE ENGINEER'S NOTICE TO CONTRACTORS
 THE EXISTENCE AND LOCATION OF ANY UNDERGROUND UTILITY
 OR STRUCTURE SHOWN ON THESE PLANS ARE OBTAINED BY A
 SEARCH OF THE AVAILABLE RECORDS TO THE BEST OF OUR
 KNOWLEDGE THERE ARE NO EXISTING UTILITIES EXCEPT AS
 SHOWN ON THIS MAP
 THE CONTRACTOR IS REQUIRED TO TAKE DUE PRECAUTIONARY
 MEASURES TO PROTECT THE UTILITY LINES SHOWN AND
 ANY OTHER LINES NOT OF RECORD OR NOT SHOWN ON THIS
 DRAWING.
E. S. Ballou
 R.C.E. 10533

REVISION:
 1. H.L.'S ELIMINATED TO THE WEST AT STA. 1+65
 AND 2+75. SIX-INCH WYES TO REMAIN.
 2. PARTICIPATION LETTER REVISED. PROPERTY
 ON WEST OF SEWER NOT PARTICIPATING.
 APPROVED *Ralph Schaffer* DATE 11/3/67
 R.C.E. NO. 13906



INDEX MAP
 P.C. NO. 7889
 HoMyr PLACE

Any connection to the sewage system of County Sanitation District, provided directly or indirectly by the sewers shown on these plans, shall be considered a temporary connection until all area covered is annexed to said district, at which time the connection shall be permanent, if for any reason the annexation to the district of any area covered hereunder is not complete, the property not in the district will be required to disconnect unless a contract is entered into with the district providing for the disposal of sewage from the area.

ISSUE NO HOUSE CONNECTION PERMITS UNTIL HoMyr PLACE IS DEDICATED TO THE COUNTY OF LOS ANGELES OR A SANITARY SEWER EASEMENT IS GRANTED TO THE COUNTY.

DOUBLE SCALE
 NEWHALL BLDG. DIST. NO. 8.2

PROFILE ALIGNMENT AND GRADE OF
 SANITARY SEWERS PAGE 1
 CONSTRUCTED IN

HoMyr PLACE
 PRIVATE CONTRACT NO. 7889

W.S. 62
 1 SHEETS, 2 PAGES
 SCALE: VERT. 1" = 4' HORIZ. 1" = 40'
 JUNE, 1967 39530
 PREPARED IN THE OFFICES OF
 ANDEL ENGINEERING CO.
E. S. Ballou
 REG. C. E. NO. 10533

- NOTES:
1. PROFILE STAKES ON THE PROPERTY LINE OR PROPERTY LINES PRODUCED AT RIGHT ANGLES TO THE SEWER LINE AT THE CENTER LINE OF EACH MANHOLE.
 2. NO REPRESENTATIVE OF THE COUNTY ENGINEER WILL SURVEY OR LAY OUT ANY PORTION OF THE WORK.
 3. THE PRIVATE ENGINEER SHALL FURNISH THE COUNTY ENGINEER WITH GRADE SHEETS AND STATIONING FOR ALL HOUSE LATERALS AND 1" BRANCHES AND SHALL PROVIDE STAKES FOR THEM AT THEIR PROPER LOCATIONS WITH SEASONING PLANE MARKED. ALL HOUSE LATERALS SHALL BE CONSTRUCTED IN A STRAIGHT ALIGNMENT AT RIGHT ANGLES FROM THE MAIN LINE SEWER EXCEPT AS SHOWN ON THE PLANS. ANY CHANGE IN ALIGNMENT SHALL BE REQUESTED IN WRITING BY THE PRIVATE ENGINEER.
 4. THE PRIVATE ENGINEER SHALL FURNISH THE HOUSE LATERAL DEPTH AT THE PROPERTY LINE BELOW THE TOP OF CURB EXCEPT FOR EACH HOUSE LATERAL ON THE GRADE SHEET.
 5. NO REVISIONS SHALL BE MADE IN THESE PLANS WITHOUT THE APPROVAL OF THE COUNTY ENGINEER.
 6. THE CONTRACTOR SHALL NOTIFY THE CONSTRUCTION DIVISION BY TELEPHONE, MADISON 9-4747, EXT. 8155, AT LEAST TWENTY-FOUR HOURS BEFORE STARTING ANY WORK UNDER THIS CONTRACT.
 7. MANHOLES SHALL BE BRICK SEWER STRUCTURES PER S-3 OR PRECAST CONCRETE MANHOLES PER S-5 OR S-6 EXCEPT AS NOTED.
 8. USE STANDARD MANHOLE FRAMES AND COVERS, S-73 EXCEPT AS NOTED.
 9. USE EXTRA STRENGTH PIPE, ALL PIPE IS STANDARD DEPTH EXCEPT AS NOTED.
 10. USE MECHANICAL COMPRESSION JOINTS FOR ALL V.C.P. JOINTS PER SPECS. SECS. 36, 40 & 49.
 11. IF A POWER POLE IS WITHIN THREE FEET OF THE SEWER, THE SEWER SHALL BE ENCASED, PER S-23 CASE III, TWO FEET ON EACH SIDE FROM THE POINT OF INTERFERENCE.
 12. IF DURING THE COURSE OF CONSTRUCTION IT IS DETERMINED THAT THERE IS LESS THAN FOUR FEET OF COVER OVER THE TOP OF A MAIN LINE OR HOUSE LATERAL V.C.P. SEWER WHICH IS NOT INDICATED ON THE PLANS, THE PIPE SHALL BE ENCASED PER S-25 UNLESS OTHERWISE APPROVED BY THE COUNTY ENGINEER.
 13. HOUSE LATERALS TO BE CONSTRUCTED WITH INVERTS AT PROPERTY LINE, 6" BELOW CURB GRADE EXCEPT AS NOTED.
 14. RESURFACE ALL TRINCHES WITHIN PAVED AREAS TO MEET L.A. COUNTY ROAD DEPT. REQUIREMENTS, IN ACCORDANCE WITH PERMITS.
 15. PER MANHOLE DEPTH TEST USE FORMULA NO. 7, SPECS. SEC. 84.
 16. ALL STATE AND LOCAL TRUNK SEWER ORDERS WILL BE RIGIDLY ENFORCED.
 17. COUNTY SANITATION DISTRICTS SHALL BE NOTIFIED PRIOR TO THE FOLLOWING AS THAT REQUIRED INSPECTION CAN BE MADE (PHONE: 337-1025):
 - (1) Commencement of construction of manholes on District Trunk sewer.
 - (2) Working from existing trunk on District Trunk Sewer.
 - (3) Core Drilling District Trunk sewer.
 - (4) Construction of house connections to District Trunk sewer.
 - (5) Acceptance of the project.

NOTE:
 GRADES TO WHICH THIS IMPROVEMENT IS TO BE CONSTRUCTED ARE SHOWN ON PLANS AND PROFILE. GRADE POINTS FOR TOP OF CURBS, CENTER LINE OF STREETS, OR CENTER LINE OF ALLEYS ARE SHOWN BY CIRCLES ON PROFILE. AT ALL POINTS BETWEEN DESIGNATED POINTS THE GRADE SHALL BE ESTABLISHED TO ALL TO CORRESPOND TO A STRAIGHT LINE DRAWN BETWEEN SAID DESIGNATED POINTS. THIS DRAWING AND THE DATA THEREON ARE HEREBY MADE A PART OF THE SPECIFICATIONS. WORK SHALL BE CONSTRUCTED ACCORDING TO STANDARD SPECIFICATIONS DATED 12-22-1967 AS REVISIONS. COUNTY ENGINEER SHALL BE PRESENT ONLY IN THE PRESENCE OF THE COUNTY ENGINEER. BEFORE WORK CAN BE STARTED, THE CONTRACTOR MUST OBTAIN A PERMIT TO LOCATE IN COUNTY STREETS FROM THE L.A. COUNTY ROAD DISTRICT OFFICE (Rm. 2000) AND PAY TO THE COUNTY ENGINEER, ROOM 300, COUNTY ENGINEERING BUILDING, 128 SOUTH SPRING STREET, LOS ANGELES, CALIFORNIA, REGIONAL OFFICE, SUFFICIENT TO COVER THE COST OF CONSTRUCTION INSPECTION AND RECORD PLANS. APPROVAL OF THIS PLAN BY THE COUNTY OF LOS ANGELES DOES NOT CONSTITUTE A REPRESENTATION AS TO THE ACCURACY OF THE LOCATION OF OR THE EXISTENCE OR NON-EXISTENCE OF ANY UNDERGROUND UTILITY PIPE, OR STRUCTURE WITHIN THE LIMITS OF THIS PROJECT. THIS NOTE APPLIES TO ALL PAGES. IF WORK IS TO BE DONE IN A STATE HIGHWAY, A PERMIT MUST BE OBTAINED FROM THE STATE OF CALIFORNIA, DIVISION OF HIGHWAYS, 128 SOUTH SPRING STREET, LOS ANGELES, CALIFORNIA.

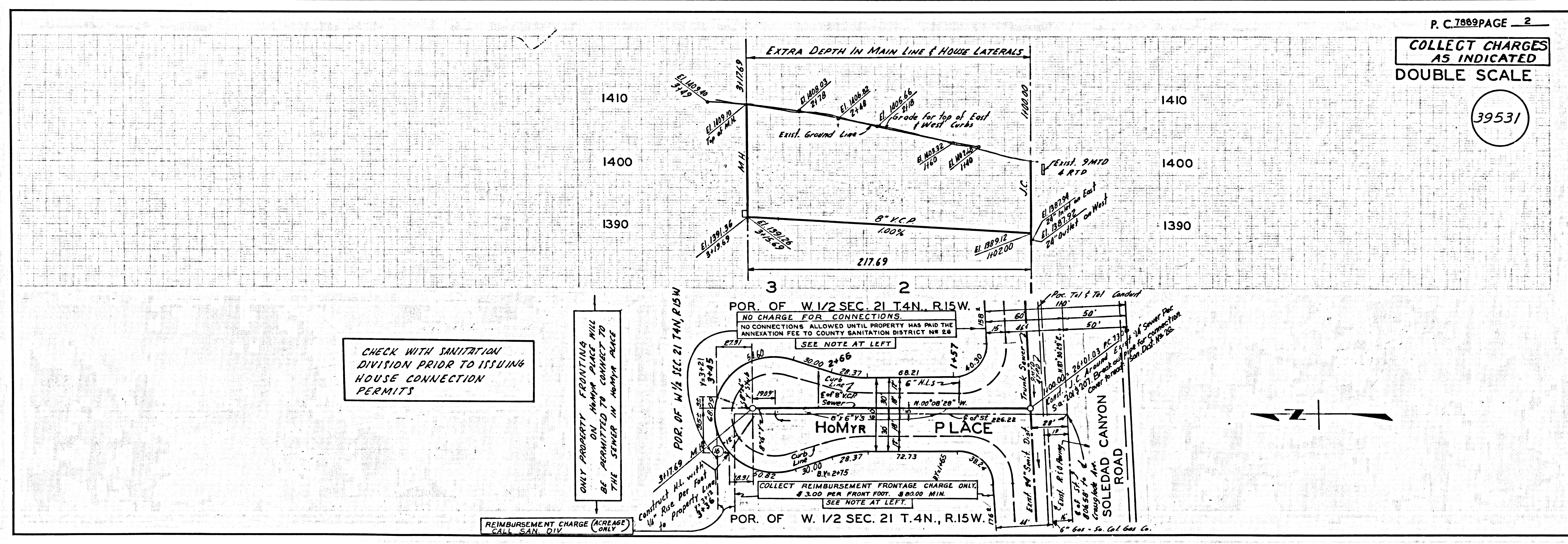
COUNTY OF LOS ANGELES, CALIFORNIA
 JOHN A. LAMBIE, COUNTY ENGINEER J. D. PARKHURST, CHIEF ENGINEER
 CO. 11011
 APPROVED BY *L. Williams* APPROVED BY *J. D. Parkhurst*
 NEWHALL REGIONAL ENGINEER OFFICE ENGINEER

CHECKED BY *Ralph Schaffer* 23 Dec 67
 REG. C.E. NO. 11946

COLLECT CHARGES AS INDICATED
Tom Howard 9/20/67

NO CONNECTIONS FOR THE DISPOSAL OF INDUSTRIAL WASTES SHALL BE MADE TO SEWERS SHOWN ON THESE DRAWINGS WITHOUT WRITTEN PERMISSION FROM THE CHIEF ENGINEER AND GENERAL MANAGER OF THE COUNTY SANITATION DISTRICTS.

J.N. 03 68.57



P. C. 7889 PAGE 2
 COLLECT CHARGES AS INDICATED
 DOUBLE SCALE
 39531