

STEEL STOP LOG
Scale: 1" = 1'-0"
One steel stop log required per manhole. Fits both notches in channel.

NOTE
The Contractor shall construct the proposed siphon in such a manner that continuous flow of sewage in the C.S.D. trunk sewer is not interrupted. The Contractor's method of construction shall be submitted to the County Sanitation District for approval before construction. All work done and all materials furnished on C.S.D. No. 15 Trunk Sewer shall be subject to inspection and approval of Sanitation District representative and the Contractor shall prosecute the work only in his presence.

1964 STORM DRAIN BOND ISSUE

REVISIONS		
MARK	DATE	DESCRIPTION

PROPOSED DOUBLE BARREL SIPHON
SCALE: 1" = 8'

ENCASEMENT DETAIL
Scale: 1/2" = 1'-0"

APPROVED BY
JOHN D. PARKHURST
CHIEF ENGINEER
COUNTY SANITATION DIST. NO. 15

PREPARED BY
JOHN A. LAMBIE
COUNTY ENGINEER

P.C. 7895
RECOMMENDED BY
Richard M. Com
ASST. DIVISION ENGINEER - SANITATION DIVISION

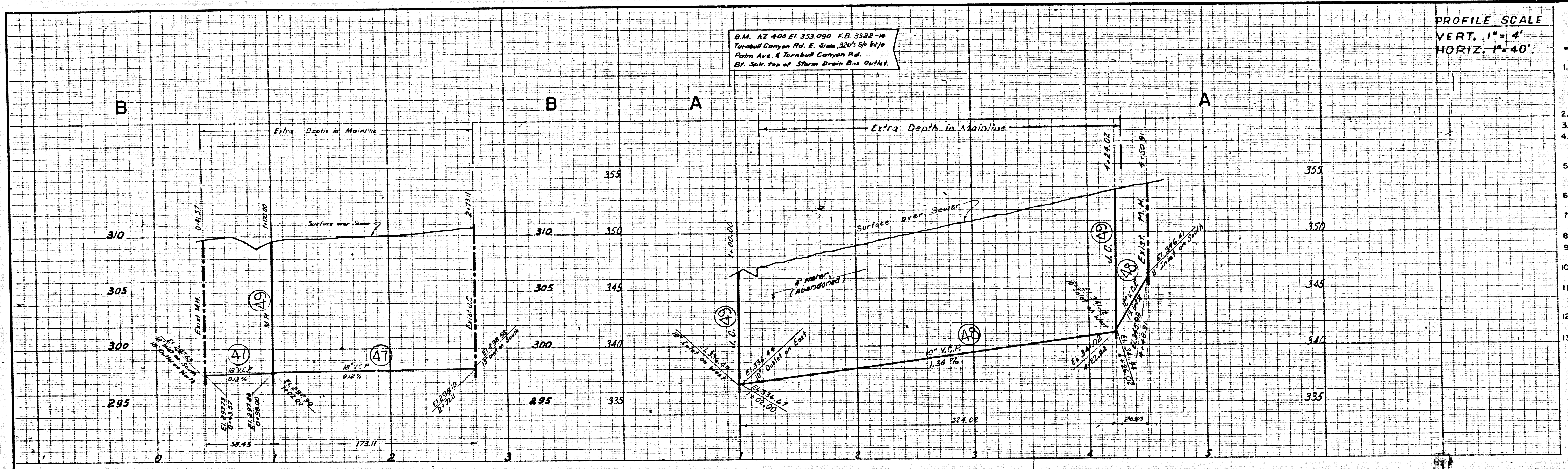
LOS ANGELES COUNTY
FLOOD CONTROL DISTRICT

TURNBULL CANYON RD.
PROJECT NO. 703
UNIT 2
SANITARY SEWER RECONSTRUCTION

PLAN AND PROFILE

APPROVED BY
Richard M. Com
ASST. DIVISION ENGINEER - SANITATION DIVISION

SCALE: 8 1/2" x 11" DWG. NO. 364-703-DB.11
DATE: JAN 68 SHEET 11 OF 18



PROFILE SCALE
 VERT. 1" = 4'
 HORIZ. 1" = 40'

GENERAL SEWER NOTES

- Sanitary Sewers shall be constructed according to Standard Specifications dated May 25, 1962, as revised, on file in the Office of the County Engineer. All shall be prosecuted only in the presence of the County Engineer.
- For legend see Standard Plan S-1.
- Use extra strength vitrified clay pipe.
- Use mechanical compression joints for all vitrified clay pipe sewers per Sections 36, 48, & 49 of Standard Sewer Specifications.
- All structures shall be either brick manholes per S-3 or precast concrete manholes per S-6, except as noted.
- Use standard manhole frames & covers per Standard Plan S-15, except as noted.
- Use formula No. 2, Section 54 of Standard Sewer Specifications, to compute allowable leakage.
- Existing service to be maintained at all times.
- Abandoned portions of house laterals shall be sealed per Section 60 of Standard Sewer Specifications.
- The Contractor shall notify the County Engineer by telephone, 629-4747, Ext. 81551, at least 24 hours before starting any work under this project.
- No revisions shall be made in these plans without the approval of the County Engineer.
- Approval of the sewer plans for this project by the County of Los Angeles does not constitute a representation as to the accuracy of the location of, or the existence or non-existence of any underground utility pipe or structure within the limits of this project.

County Sanitation Districts shall be notified prior to the following so that required inspection can be made (Phone: 337-1025):

- Commencement of construction of manhole on District trunk sewer.
- Breaking into existing manhole on District trunk sewer.
- Core drilling District trunk sewer.
- Construction of house connections to District trunk sewer.
- Acceptance of the project.

NO CHARGE FOR CONNECTIONS

43562

NO CONNECTIONS FOR THE DISPOSAL OF INDUSTRIAL WASTES SHALL BE MADE TO SEWERS SHOWN ON THESE DRAWINGS WITHOUT WRITTEN PERMISSION FROM THE CHIEF ENGINEER AND GENERAL MANAGER OF THE COUNTY SANITATION DISTRICTS.

1964 STORM DRAIN BOND ISSUE
 LOS ANGELES COUNTY
 FLOOD CONTROL DISTRICT

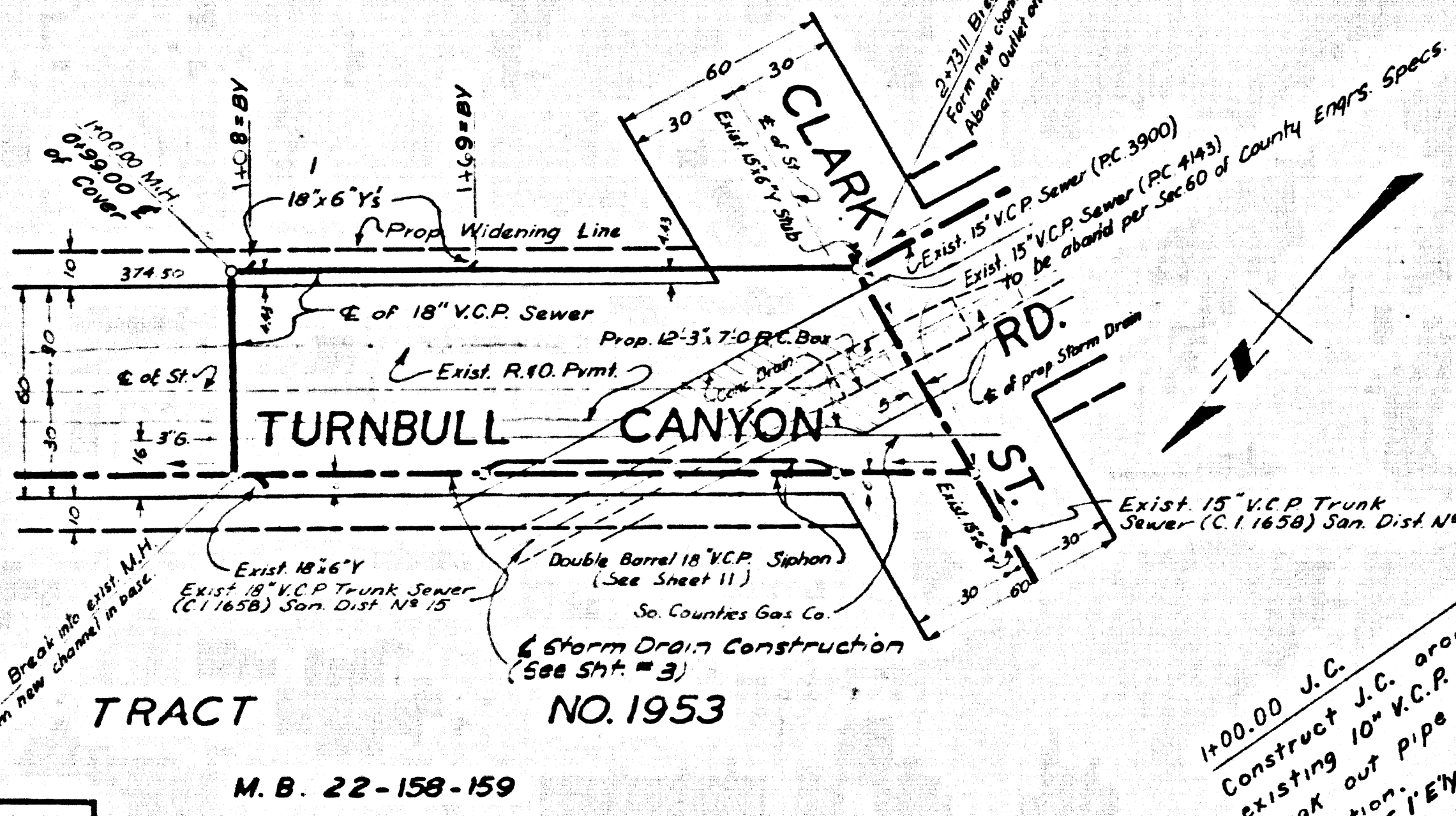
TURNBULL CANYON RD.
 PROJECT NO. 703
 UNIT 2
 SANITARY SEWER RECONSTRUCTION

PREPARED BY JOHN A. LAMBIE COUNTY ENGINEER	RECOMMENDED BY <i>Richard M. Con</i> ASST. DIVISION ENGINEER, SANITATION DIVISION	APPROVED BY <i>John D. Parkhurst</i> CHIEF ENGINEER COUNTY SAN. DIST. NO. 15	SCALE HORIZ. 1" = 40' VERT. 1" = 4'	DATE JAN. 68	DWG. NO. 364-703-D810 SHEET 10 OF 14
---	---	---	---	-----------------	---

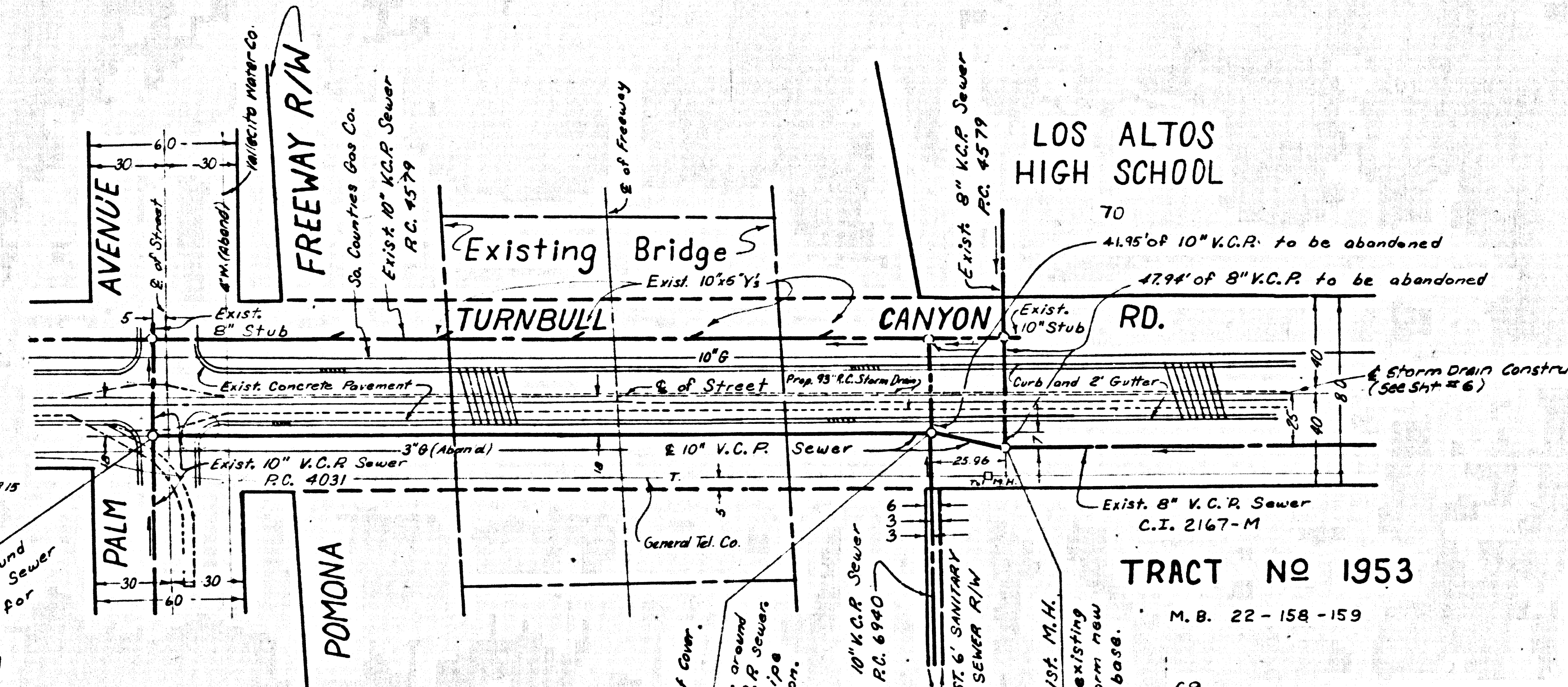
NOTE

THE SEWER SHOWN ABOVE, 2-2, IS TO BE CONSTRUCTED BEFORE STARTING CONSTRUCTION OF THE DOUBLE BARREL 18" V.C.P. SIPHON

TRACT NO. 2768
 M.B. 31-35-36



TRACT NO. 1953
 M.B. 22-158-159



REVISIONS	DATE	DESCRIPTION
County of L.A.		
County of L.A.		
County of L.A.		
C.W.H.		

TRACT NO. 1953
 M.B. 22-158-159

APPROVED BY
JOHN D. PARKHURST
 CHIEF ENGINEER
 COUNTY SAN. DIST. NO. 15
John D. Parkhurst
 OFFICE ENGINEER