

B.M. 06-2260 ELEV. 577.305
 L.A.T. IN CONC. FOOTING, 6 FT. FENCE
 COR. @ S.E. COR. LOMITAS & THIRD
 AVENUES, 50 FT. S. & 30 FT. E. OF 6 MT.
 BASELINE QUAD. 1965 803.

NOTES CONT.

- 20. Figures in circles indicate House Laterals to be constructed at 1/4" rise per foot to property line.
- 21. Figures in circles indicate House Laterals to be constructed at 1/4" rise per foot to property line, and "Y" to be laid flat.

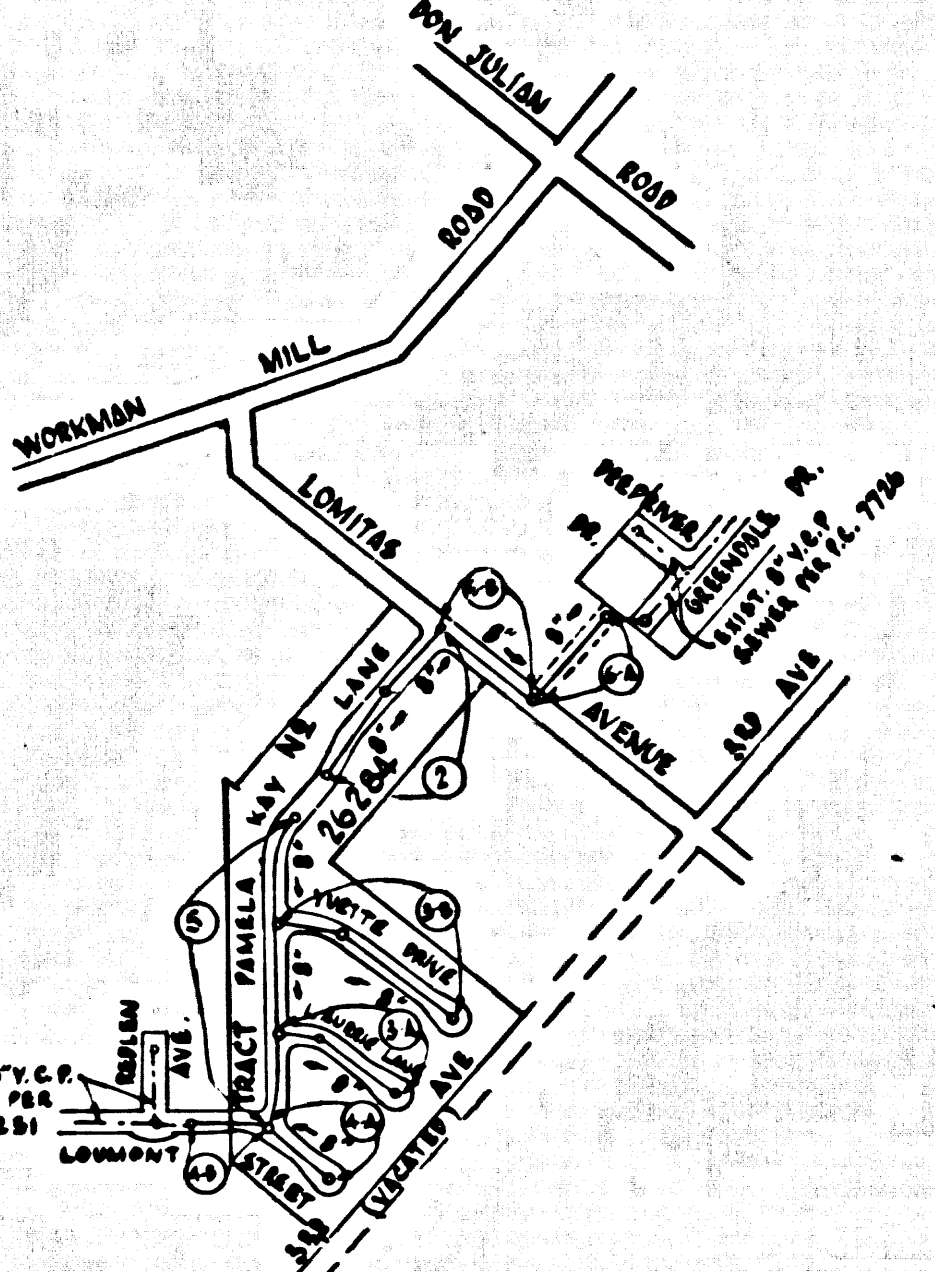
Utility Stationing Distribs shall be posted prior to the following so that required inspection can be made (Phone 337-1028 x-4000-0000).

Acceptance of the project.

THE FOLLOWING COUNTY ENGINEER STANDARD PLANS APPLY TO THIS PROJECT:

Record	S-1
Min. Public Safety Requirements	S-2
Prick Holes	S-3
Form Reinforced Precast Concrete Manholes	S-4
Reinforced Precast Concrete Manholes	S-5
Manhole Frame and Cover	S-15
Manhole Step	S-17
12" x 12" for Sewer Pipe	S-21
Cover and Insetment	S-23
Vertical Tee Support	S-28
Allowable Trench Widths	S-33

ALL FILL TO BE IN PLACE AND ROUGH GRADING COMPLETED PRIOR TO THE CONSTRUCTION OF SEWERS



P.C. No 7897
 INDEX MAP
 TRACT No 26284
 SCALE 1" = 500'

NO CONNECTIONS FOR THE DISPOSAL OF INDUSTRIAL WASTES SHALL BE MADE TO SEWERS SHOWN ON THESE DRAWINGS WITHOUT WRITTEN PERMISSION FROM THE CHIEF ENGINEER AND GENERAL MANAGER OF THE COUNTY SANITATION DISTRICTS.

LA PUENTE BLDG. DIST. NO. 2

- NOTES:
- PROVIDE STAKES ON THE PROPERTY LINE OR PROPERTY LINES PRODUCED AT RIGHT ANGLES TO THE SEWER LINE AT THE CENTER LINE OF EACH MANHOLE.
 - NO REPRESENTATIVE OF THE COUNTY ENGINEER WILL SURVEY OR LAY OUT ANY PORTION OF THE WORK.
 - THE PRIVATE ENGINEER SHALL FURNISH THE COUNTY ENGINEER WITH GRADE SHEETS AND STATIONINGS FOR ALL HOUSE LATERALS AND "Y" OR "Z" BRANCHES AND SHALL PROVIDE STAKES FOR THEM AT THEIR PROPOSED LOCATIONS WITH STATIONING PLAINLY MARKED. ALL HOUSE LATERALS SHALL BE CONSTRUCTED IN A STRAIGHT ALIGNMENT AT RIGHT ANGLES FROM THE MAIN LINE SEWER EXCEPT AS SHOWN ON THE PLANS. HOUSE LATERALS FROM CHIMNEYS SHALL NOT HAVE AN ANGLE OF LESS THAN 45° WITH THE MAIN LINE SEWER. ANY CHANGE IN ALIGNMENT SHALL BE REQUESTED BY WRITING BY THE PRIVATE ENGINEER.
 - THE PRIVATE ENGINEER SHALL FURNISH THE HOUSE LATERAL DEPTH AT THE PROPERTY LINE BELOW THE TOP OF CURB ELEVATION FOR EACH HOUSE LATERAL ON THE GRADE SHEET.
 - NO REVISIONS SHALL BE MADE IN THESE PLANS WITHOUT THE APPROVAL OF THE COUNTY ENGINEER.
 - THE CONTRACTOR SHALL NOTIFY THE CONSTRUCTION DIVISION BY TELEPHONE, HANDSON 9-472, EXT. 8281, AT LEAST TWENTY-FOUR HOURS BEFORE STARTING ANY WORK UNDER THIS CONTRACT.
 - ALL STRUCTURES SHALL BE EITHER BRICK MANHOLES PER S-3 OR PRECAST CONCRETE MANHOLES PER S-4 OR S-5 EXCEPT AS NOTED.
 - MANHOLE TOPS IN UNIMPROVED RIGHTS-OF-WAY TO BE SIX INCHES ABOVE FINISHED GRADE.
 - USE EXTRA STRENGTH PIPE. ALL PIPE IS STANDARD DEPTH EXCEPT AS NOTED.
 - VITRIFIED CLAY PIPE JOINTS SHALL BE TYPE "Y" OR "Z" PER STD. SPEC. SEC. 129-1.
 - IF A POWER POLE IS WITHIN THREE FEET OF THE SEWER, THE SEWER SHALL BE ENCASED, PER S-25. TWO FEET ON EACH SIDE FROM THE POINT OF INTERFERENCE.
 - IF DURING THE COURSE OF CONSTRUCTION IT IS DETERMINED THAT THERE IS LESS THAN FOUR FEET OF COVER OVER THE TOP OF A MAIN LINE OR HOUSE LATERAL V.C.P. SEWER WHICH IS NOT ENCASED ON THE PLANS, THE PIPE SHALL BE ENCASED PER S-25. OR AS OTHERWISE APPROVED BY THE COUNTY ENGINEER.
 - HOUSE LATERALS TO BE CONSTRUCTED WITH STAKES AT PROPERTY LINE & FEET BELOW CURB GRADE EXCEPT AS NOTED.
 - RESURFACE ALL TRENCHES WITHIN PAVED AREAS TO MEET L.A. COUNTY ROAD DEPT. OR CALIFORNIA STATE HIGHWAY REQUIREMENTS IN ACCORDANCE WITH PERMITS.
 - SEWERS TO BE TYPED PER STANDARD SPEC. SECTION 284-1.1.7 OF THE STANDARD SPECIFICATIONS.
 - IF PERMITS TO EXCAVATE SHALL BE THE STANDARD SPECIFICATIONS, SECTION 284-2.
 - ALL JOINTS BETWEEN CURB AND VITRIFIED CLAY PIPE SHALL BE MADE WITH A RUBBER BELLEVUE JOINT, "C" OR "Y" (WITH BELLEVUE OR MECHANICAL) PER STANDARD SPECIFICATIONS, SECTION 284-2.
 - "Y" OR "Z" BRANCHES MAY BE USED FOR CONNECTIONS TO MAINLINE SEWERS EXCEPT AS NOTED.

REVISION 2-6-69
 ADDED 24" R.C.P. STORM DRAIN, MOVED HOUSE CONNECTIONS FROM STA. 39+13 TO 39+27 & 40+12 TO 40+17 ON PROFILE. 18" V.C.P. ON PROFILE 4.
 APPROVED: [Signature]

COLLECT CHARGES AS INDICATED

NOTICE TO CONTRACTOR
 The existence and location of any underground utility pipes or structures shown on these plans are obtained by a search of the available records. To the best of my knowledge there are no existing utilities except as shown on these plans. The contractor is required to take due precautionary measures to protect the utility lines shown and any other lines not of record or not shown on these plans.
 C.M. Leonard
 C.E.

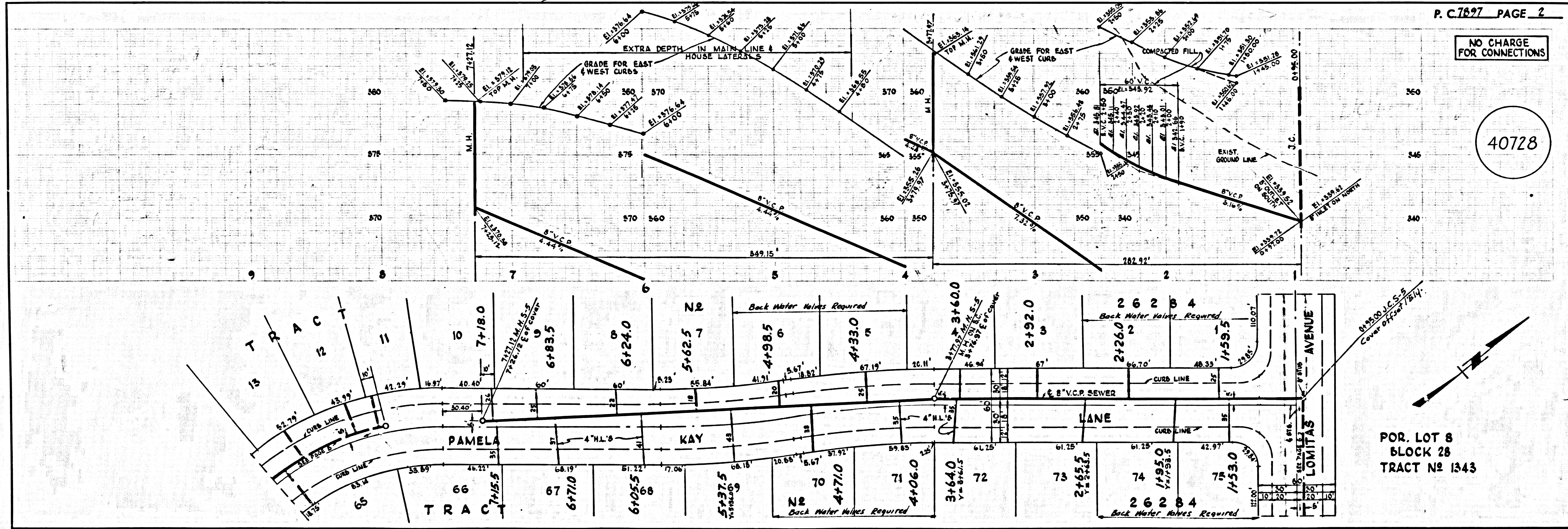
PROFILE, ALIGNMENT AND GRADE OF P.C. 7897
 SANITARY SEWERS PAGE 1
 CONSTRUCTED IN
 TRACT No 26284
 PRIVATE CONTRACT NO. 7897

W.S. 37
 3 SHEETS, 6 PAGES
 SCALE: VERT. 1" = 4' AUGUST, 1968
 PREPARED IN THE OFFICES OF
 LANCOS ENGINEERING 40727
 by Chad M. Leonard
 REG. C.E. NO. 15167

NOTES:
 GRADES TO WHICH THIS IMPROVEMENT IS TO BE CONSTRUCTED ARE SHOWN ON PLANS AND PROFILE. GRADE POINTS FOR TOP OF CURB, CENTER LINE OF STREET, OR CENTER LINE OF ALLEYS ARE SHOWN BY CIRCLES ON PROFILES. AT ALL POINTS BETWEEN DESIGNATED POINTS THE GRADE SHALL BE STRAIGHT SO AS TO CORRESPOND TO A STRAIGHT LINE BETWEEN SAID DESIGNATED POINTS. ELEVATIONS ARE IN FEET ABOVE U.S.C. & G.S. MEAN SEA LEVEL DATUM OF 1929.
 STANDARD SPECIFICATIONS AND THE CONSTRUCTION OF SANITARY SEWERS 2-15-68. ALL REVISIONS SHALL BE REQUESTED BY WRITING TO THE COUNTY ENGINEER, ROOM 300, COUNTY ENGINEERING BUILDING, 100 WEST SECOND STREET, LOS ANGELES, CALIFORNIA. THE COUNTY ENGINEER'S OFFICE IS NOT RESPONSIBLE FOR THE ACCURACY OF THE LOCATION OF OR THE EXISTENCE OR NON-EXISTENCE OF ANY UNDERGROUND UTILITY PIPE, OR STRUCTURE WITHIN THE LIMITS OF THIS PROJECT. THIS NOTE APPLIES TO ALL PAGES.
 IF WORK IS TO BE DONE IN A STATE HIGHWAY, A PERMIT MUST BE OBTAINED FROM THE STATE OF CALIFORNIA, DIVISION OF HIGHWAYS, THE COUNTY ENGINEER, LOS ANGELES, CALIFORNIA.

COUNTY OF LOS ANGELES, CALIFORNIA
 JOHN A. LAMBE, COUNTY ENGINEER J. D. PARKHURST, CHIEF ENGINEER
 APPROVED BY: [Signature] APPROVED BY: [Signature]
 SANITARY ENGINEER OFFICE ENGINEER OFFICE ENGINEER

CHECKED BY: [Signature] 10-30-68
 REG. C.E. NO. 12283



POR. LOT 8
 BLOCK 28
 TRACT No 1343

