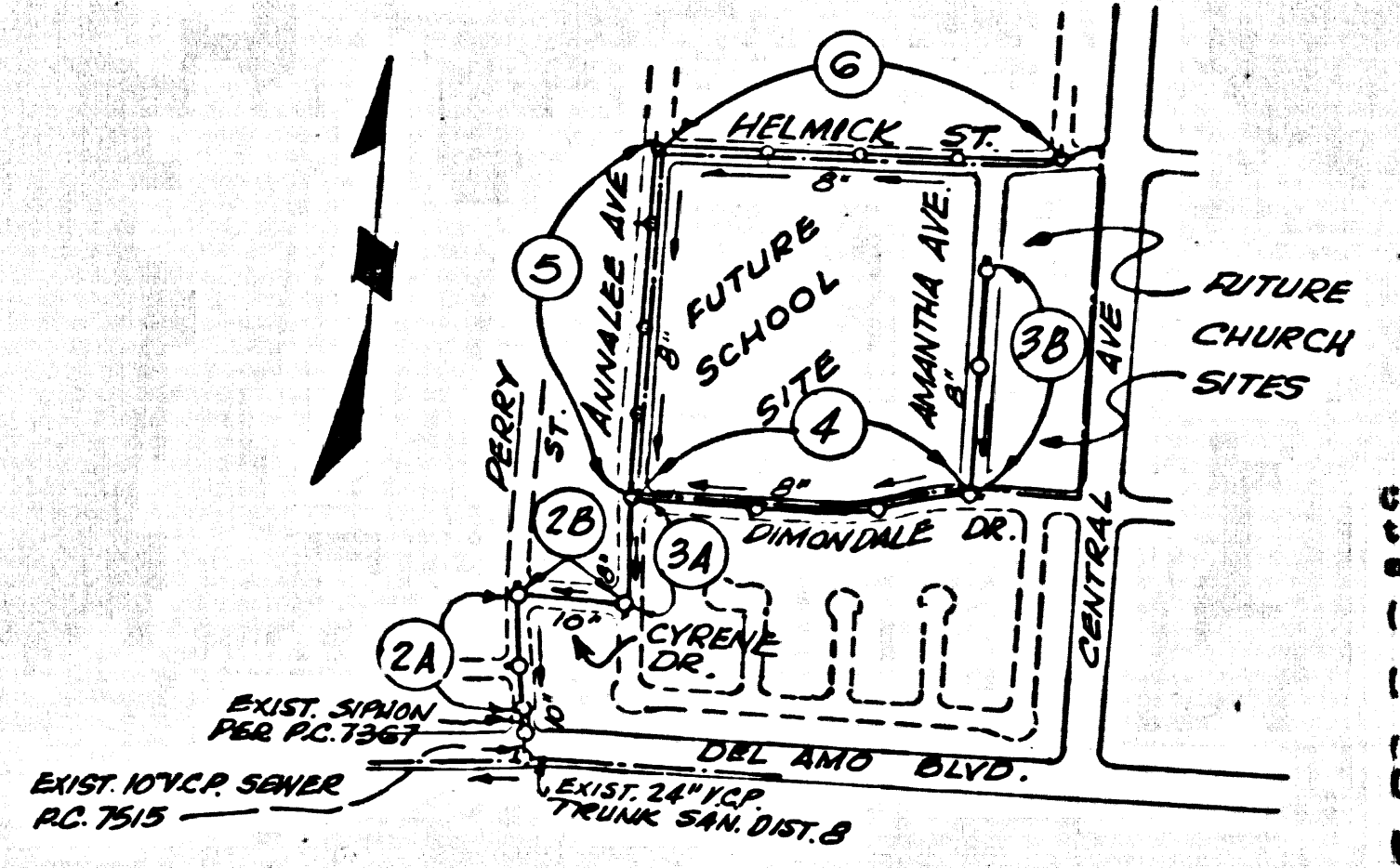


B.M. No. 87229 ELEV. 11.156  
 L & Spk. @ E. Edge of Pavt. ALAN  
 BLDG. 417 W. E. Tower # 152, 929 Tower  
 S. of VICTORIA ST.  
 Gardena QUAD. 19 66

**NOTICE TO CONTRACTOR**

THE EXISTENCE AND LOCATION OF ANY UNDERGROUND UTILITY PIPES OR STRUCTURES SHOWN ON THESE PLANS, ARE OBTAINED BY A SEARCH OF THE AVAILABLE RECORDS. THE CONTRACTOR IS REQUIRED TO TAKE DUE PRECAUTIONARY MEASURES TO PROTECT THE UTILITY LINES NOT OF RECORD OR NOT SHOWN ON THESE PLANS.



- County Sanitation Districts shall be notified prior to the following so that required inspection can be made (Phone: 636-3037)
- (1) Commencement of construction of manhole on District's trunk sewer.
  - (2) Breaking into existing manhole on District's trunk sewer.
  - (3) Core drilling District's trunk sewer.
  - (4) Construction of house connections to District's trunk sewer.
  - (5) Acceptance of the project.

**INDEX MAP**  
 SCALE: 1" = 600'  
 P.C. 7899

**REVISION NO. 1**  
 CHANGE LOC. C.B. TO STA. 0+00 ON ANNALIE AVE.  
 RELOC. FIT ST. ON ANNALIE AVE STA. 10+00 TO 11+00  
 RELOC. SEWER ON HELMICK ST. STA. 50+00 TO 51+00  
 RELOC. SEWER ON VICTORIA ST. STA. 0+00 TO 0+10  
 9-21-68  
 OFFICE OF CITY ENGINEER, LOS ANGELES

**LENNOX BLDG. DIST. NO. 7**

- NOTES:**
1. PROFILE STAKES ON THE PROPERTY LINE OR PROPERTY LINES PRODUCED AT RIGHT ANGLES TO THE SEWER LINE AT THE CENTER LINE OF EACH MANHOLE.
  2. NO REPRESENTATIVE OF THE COUNTY ENGINEER WILL SURVEY OR LAY OUT ANY PORTION OF THE WORK.
  3. THE PRIVATE ENGINEER SHALL FURNISH THE COUNTY ENGINEER WITH GRADE SHEETS AND STATIONING FOR ALL HOUSE LATERALS AND "Y" BRANCHES AND SHALL PROVIDE STAKES FOR THEM AT THEIR PROPER LOCATIONS WITH STATIONING PLAINLY MARKED. ALL HOUSE LATERALS SHALL BE CONSTRUCTED IN A STRAIGHT ALIGNMENT AT RIGHT ANGLES FROM THE MAIN LINE SEWER EXCEPT AS SHOWN ON THE PLANS. HOUSE LATERALS FROM CHIMNEYS SHALL NOT HAVE AN ANGLE OF USE TEAM AT WITH THE MAIN LINE SEWER. ANY CHANGE IN ALIGNMENT SHALL BE REQUESTED IN WRITING BY THE PRIVATE ENGINEER.
  4. THE PRIVATE ENGINEER SHALL FURNISH THE HOUSE LATERAL DEPTH AT THE PROPERTY LINE BELOW THE TOP OF CURB ELEVATION FOR EACH HOUSE LATERAL ON THE GRADE SHEET.
  5. NO REVISIONS SHALL BE MADE IN THESE PLANS WITHOUT THE APPROVAL OF THE COUNTY ENGINEER.
  6. THE CONTRACTOR SHALL NOTIFY THE CONSTRUCTION DIVISION BY TELEPHONE, MADISON 9-4700, EXT. 8138, AT LEAST TWENTY-FOUR HOURS BEFORE STARTING ANY WORK UNDER THIS CONTRACT.
  7. ALL STRUCTURES SHALL BE EITHER BRICK MANHOLES PER 9-3 OR PRECAST CONCRETE MANHOLES PER 8-5 OR 8-6, EXCEPT AS NOTED.
  8. USE STANDARD MANHOLE FRAMES AND COVERS, 4 1/2" DEEP AS NOTED.
  9. MANHOLE TOPS IN UNIMPROVED RIGHTS-OF-WAY TO BE SIX INCHES ABOVE FINISHED GRADE.
  10. USE EXTRA STRENGTH PIPE. ALL PIPE IS STANDARD SPEC. EXCEPT AS NOTED.
  11. USE MECHANICAL COMPRESSION JOINTS FOR ALL V.C.P. JOINTS PER SPEC. SECT. 36, 40 & 41.
  12. IF A POWER POLE IS WITHIN THREE FEET OF THE SEWER, THE SEWER SHALL BE ENCASED, PER 5-23, TWO FEET ON EACH SIDE FROM THE POINT OF INTERFERENCE.
  13. IF DURING THE COURSE OF CONSTRUCTION IT IS DETERMINED THAT THERE IS LESS THAN FOUR FEET OF COVER OVER THE TOP OF A MAIN LINE OR HOUSE LATERAL V.C.P. SEWER WHICH IS NOT INDICATED ON THE PLANS, THE PIPE SHALL BE ENCASED PER 5-23, UNLESS OTHERWISE APPROVED BY THE COUNTY ENGINEER.
  14. HOUSE LATERALS TO BE CONSTRUCTED WITH INVERTS AT PROPERTY LINE 8 FEET BELOW CURB GRADE EXCEPT AS NOTED.
  15. REINFORCE ALL TRENCHES WITHIN FIVE FEET FROM THE PROPERTY LINE TO MEET L.A. COUNTY ROAD DEPT. OR CALIFORNIA STATE HIGHWAY REQUIREMENTS AS ACCORDANCE WITH PRIVATE.
  16. FOR ALLOWABLE LEAKAGE TEST USE FORMULA NO. 2, SPEC. SEC. 54.
  17. ALL STATE AND LOCAL TRENCH SAFETY ORDERS WILL BE STRICTLY ENFORCED.
  18. CONSTRUCTION IN ALL AREAS:
    - (A) ANY ACCEPTABLE CERTIFICATION OF COMPACTION TEST RESULTS SHALL BE SUBMITTED TO THE CONSTRUCTION DIVISION. COMPACTION TESTS SHALL BE MADE IN ACCORDANCE WITH A.S.T.M. STD. METHOD OF TEST D-293-42.
    - (B) CONSTRUCTION IS PERMITTED IN FILL AREAS WHERE THE RELATIVE DENSITY OF COMPACTION IS LESS THAN 90%. ALL
    - (C) IF THE RELATIVE DENSITY OF COMPACTION IS LESS THAN 90%, ALL MAINLINE AND HOUSE LATERALS SHALL BE CRADLED PER 5-23 OR HAVE A SPECIAL BASE COURSE PER 5-21, CASE III. SPECIAL MANHOLE BASES PER 3-46 ARE REQUIRED.
    - (D) IF THE RELATIVE DENSITY OF COMPACTION IS 90% OR GREATER, THE SPECIAL PROVISIONS IN (C) ARE NOT REQUIRED.
  19. THE BRANCHES MAY BE USED IN PLACE OF THE BRANCHES, EXCEPT AS NOTED.
  20. ALL JOINTS SHALL BE MADE WITH A RIGID JOINT SLIP JOINT (WITH HOOP IF NECESSARY) PER 5-23, SPEC. SECT. 36, OR APPROVED EQUAL.

**COLLECT CHARGES AS INDICATED**  
 (Date: 2/27/1968)

PROFILE, ALIGNMENT AND GRADE OF  
**SANITARY SEWERS** PAGE 1

**PRIVATE CONTRACT NO. 7899**

W.S. 26  
 3 SHEETS, 6 PAGES  
 SCALE: 1" = 40'  
 DATE: JUNE, 1967  
 PREPARED IN THE OFFICES OF  
**VOORHEIS - TRINDLE - NELSON**  
 15754 BEACH BLVD.  
 WESTMINSTER, CALIF.  
 BY: James E. Whitcomb  
 REG. C.E. NO. 14385

40413

FOR LEGEND SEE PLAN NO. S-1

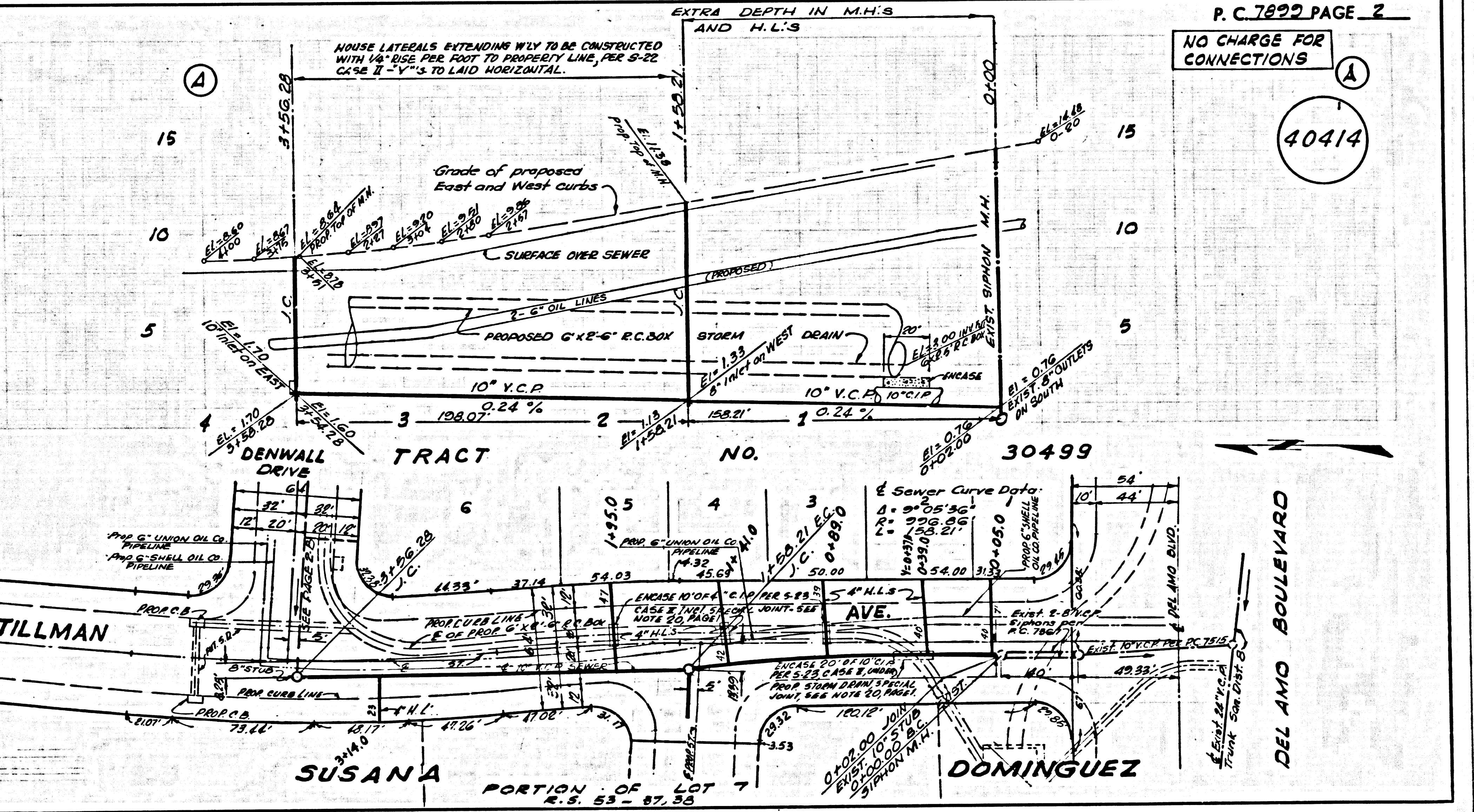
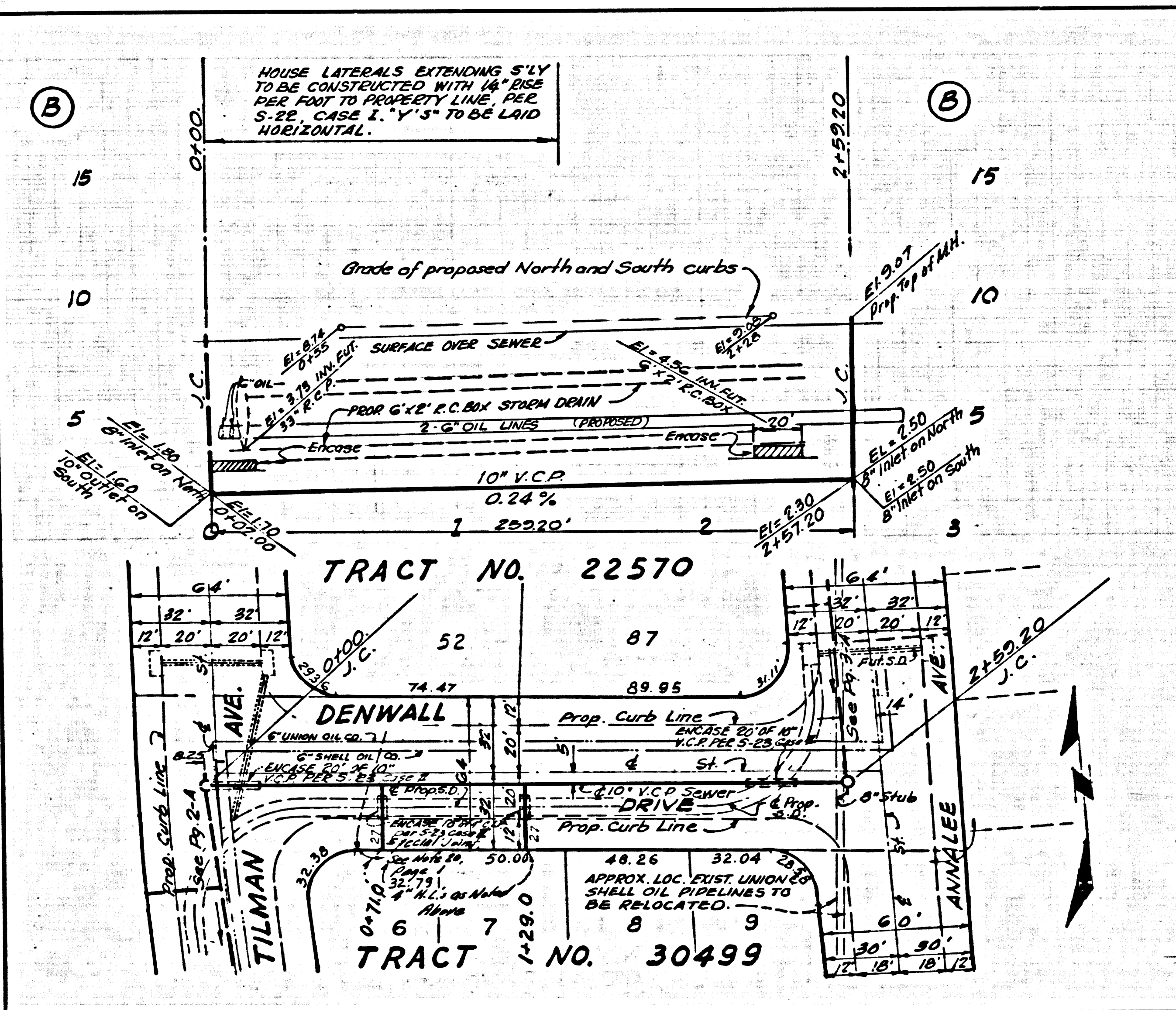
GRADER TO WHICH THE IMPROVEMENT IS TO BE CONSTRUCTED ARE SHOWN ON PLANS AND PROFILES. GRADE POINTS FOR TOP OF CURBS, CENTER LINE OF STREETS, OR CENTER LINE OF ALLEYS ARE SHOWN BY CIRCLES ON PROFILES. AT ALL POINTS BETWEEN DESIGNATED POINTS THE GRADE SHALL BE ESTABLISHED TO BE CONFORMAL TO A STRAIGHT LINE BETWEEN SAID DESIGNATED POINTS.

SECTIONING AND THE BODY OF THE PLAN TO THE COUNTY ENGINEER, ROOM 300, COUNTY ENGINEERING BUILDING, 100 WEST SECOND STREET, LOS ANGELES, CALIFORNIA. THE CONTRACTOR SHALL BE RESPONSIBLE FOR THE ACCURACY OF THE LOCATION OF THE EXISTING OR PROPOSED UTILITY PIPES, OR STRUCTURE WITHIN THE LIMITS OF THIS PROJECT. IF WORK IS TO BE DONE IN A STATE HIGHWAY, A PERMIT MUST BE OBTAINED FROM THE STATE OF CALIFORNIA, DIVISION OF HIGHWAYS, 1200 SOUTH SPRING STREET, LOS ANGELES, CALIFORNIA.

COUNTY OF LOS ANGELES, CALIFORNIA  
 JOHN A. LAMBE, COUNTY ENGINEER  
 APPROVED BY: [Signature]  
 REGIONAL ENGINEER

J. D. PARKHURST, CHIEF ENGINEER  
 APPROVED BY: [Signature]  
 OFFICE ENGINEER

J.N. 0250.02



P.C. 7899 PAGE 2  
 NO CHARGE FOR CONNECTIONS

40414



