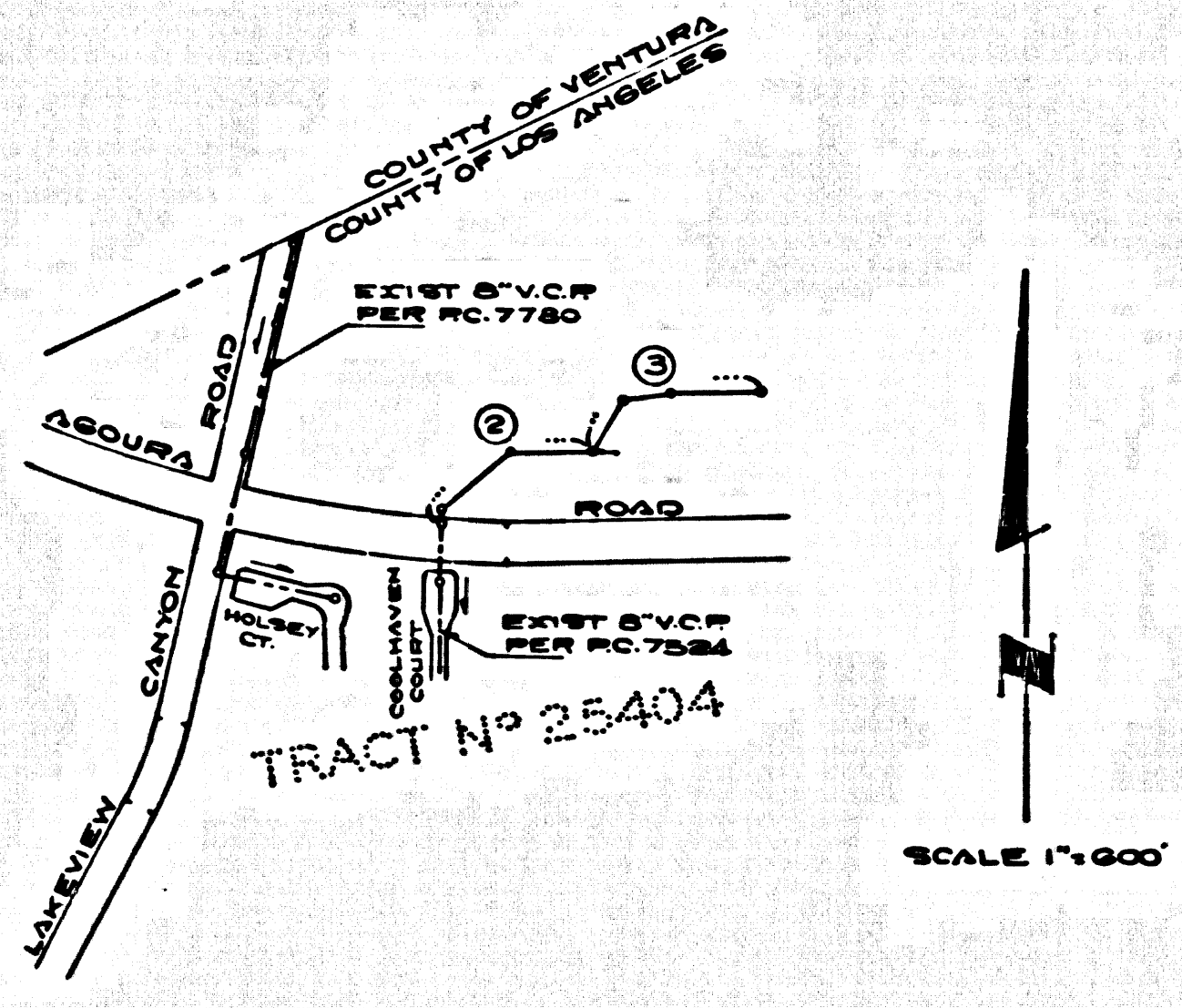


B.M. 57-5641 ELEV. 946.274  
 CHISEL ON W. SIDE C/S (PROF. INLET)  
 ON E. VENTURA BOULEVARD @ STA.  
 821+85.2 @ MILES W. CORNELL ROAD.

MALIBU QUAD. 1960.



INDEX MAP

NOTE:  
 NUMBERS IN CIRCLES INDICATE PAGE NUMBERS.

THE ACCURACY OF THE LOCATION OF OR THE EXISTENCE OR NON EXISTENCE OF ANY UTILITY PIPE OR STRUCTURE WITHIN THE LIMITS OF THIS PROJECT DOES NOT CONSTITUTE RESPONSIBILITY BY THE ENGINEER.

TESTS PER LAS VIRGENES MUNICIPAL WATER DISTRICT

1. INFILTRATION AND LEAKAGE TEST:  
 METHOD USED FOR TESTING WILL BE THE SAME AS LOS ANGELES COUNTY EXCEPT THE FORMULA TO BE USED IS AS FOLLOWS:  
 0.033 GALLONS/MINUTE/INCH OF DIAMETER/1000 FEET OR 250 GALLONS/INCH OF DIAMETER/MILE.

2. MANHOLE LEAKAGE TEST:  
 AT THE DISCRETION OF THE DISTRICT'S REPRESENTATIVE ONE MANHOLE OUT OF TEN MANHOLES AND A MINIMUM OF TWO WILL BE FILLED WITH WATER AND AFTER THREE HOURS WILL BE CHECKED FOR LEAKAGE WITH NO DROP IN LEVEL. FOR EVERY MANHOLE NOT MAKING THE TESTS FIVE MORE WILL BE TESTED AT THE DISCRETION OF THE DISTRICT'S REPRESENTATIVE.

3. AIR TESTS:  
 WHERE THE DIFFERENCE IN ELEVATION BETWEEN THE INVERT OF THE UPPER STRUCTURE AND THE INVERT OF THE LOWER STRUCTURE IS MORE THAN SIX (6) FEET AN AIR TEST WILL BE MADE. THE TIME TAKEN TO LOSE ONE (1) POUND PER SQUARE INCH GUAGE PRESSURE FROM THREE (3) POUNDS PER SQUARE INCH GUAGE PRESSURE TO TWO (2) POUNDS PER SQUARE INCH GUAGE PRESSURE SHALL NOT BE LESS THAN THREE SHOWN ON THE FOLLOWING TABLE:

MAIN PIPE DIAMETER	MINIMUM TIME LOSE
4"	1 MINUTE
6"	2 MINUTES
8"	3 MINUTES
10"	4 MINUTES
12"	5 MINUTES

IF THE TIME IS LESS THAN LISTED IN THE TABLE ABOVE THE CONTRACTOR SHALL MAKE REPAIRS AS ARE NECESSARY TO ELIMINATE EXCESSIVE LEAKAGE.

NOTES

1- THE CONTRACTOR SHALL CONTACT THE PACIFIC TELEPHONE COMPANY TEL. 783-0011 24 HOURS PRIOR TO CONSTRUCTION FOR THE PROTECTION OF THEIR BURIED CABLES.

2- THE SUPERINTENDANT AT THE SITE SHOULD BE CONTACTED FOR LOCATIONS OF UNDERGROUND UTILITIES ON THE SITE.

CALABASAS BLDG. DIST. NO. 9.1

- NOTE:
1. PROVIDE STAKES ON THE PROPERTY LINE OR PROPERTY LINES PRODUCED AT RIGHT ANGLES TO THE SEWER LINE AT THE CENTER LINE OF EACH MANHOLE.
  2. NO REPRESENTATIVE OF THE COUNTY ENGINEER WILL SURVEY OR LAY OUT ANY PORTION OF THE WORK.
  3. THE PRIVATE ENGINEER SHALL FURNISH THE COUNTY ENGINEER WITH GRADE SHEETS AND STATIONING FOR ALL HOUSE LATERALS AND "T" BRANCHES AND SHALL PROVIDE STAKES FOR THEM AT THEIR PROPER LOCATIONS WITH STATIONING PLAINLY MARKED. ALL HOUSE LATERALS SHALL BE CONSTRUCTED IN A STRAIGHT ALIGNMENT AT RIGHT ANGLES FROM THE MAIN LINE SEWER EXCEPT AS SHOWN ON THE PLANS. HOUSE LATERALS FROM CHIMNEYS SHALL NOT HAVE AN ANGLE OF LESS THAN 45° WITH THE MAIN LINE SEWER. ANY CHANGE IN ALIGNMENT SHALL BE REQUESTED IN WRITING BY THE PRIVATE ENGINEER.
  4. THE PRIVATE ENGINEER SHALL FURNISH THE HOUSE LATERAL DEPTH AT THE PROPERTY LINE BELOW THE TOP OF CURB ELEVATION FOR EACH HOUSE LATERAL ON THE GRADE SHEET.
  5. NO REVISIONS SHALL BE MADE IN THESE PLANS WITHOUT THE APPROVAL OF THE COUNTY ENGINEER.
  6. THE CONTRACTOR SHALL NOTIFY THE CONSTRUCTION DIVISION BY TELEPHONE, MADISON 4-0747, EXT. 81331, AT LEAST TWENTY-FOUR HOURS BEFORE STARTING ANY WORK UNDER THIS CONTRACT.
  7. ALL STRUCTURES SHALL BE EITHER BRICK MANHOLES PER S-3 OR PRECAST CONCRETE MANHOLES PER S-8 OR S-9 EXCEPT AS NOTED.
  8. USE STANDARD MANHOLE FRAMES AND COVERS, S-15, EXCEPT AS NOTED.
  9. MANHOLE TOPS IN UNIMPROVED RIGHTS-OF-WAY TO BE SIX INCHES ABOVE FINISHED GRADE.
  10. USE EXTRA STRENGTH PIPE. ALL PIPE IS STANDARD DEPTH EXCEPT AS NOTED.
  11. USE MECHANICAL COMPRESSION JOINTS FOR ALL V.C.P. JOINTS PER SPEC'S., SECS. 3A, 4 & 4A.
  12. IF A POWER POLE IS WITHIN THREE FEET OF THE SEWER, THE SEWER SHALL BE ENCASED, PER S-25, TWO FEET ON EACH SIDE FROM THE POINT OF INTERFERENCE.
  13. IF DURING THE COURSE OF CONSTRUCTION IT IS DETERMINED THAT THERE IS LESS THAN FOUR FEET OF COVER OVER THE TOP OF A MAIN LINE OR HOUSE LATERAL V.C.P. SEWER WHICH IS NOT INDICATED ON THE PLANS, THE PIPE SHALL BE ENCASED PER S-25, UNLESS OTHERWISE APPROVED BY THE COUNTY ENGINEER.
  14. HOUSE LATERALS TO BE CONSTRUCTED WITH HOT LESS THAN 1/2" RISE PER FOOT.
  15. RESURFACE ALL TRENCHES WITHIN PAVED AREAS TO MEET L.A. COUNTY ROAD DEPT. OR CALIFORNIA STATE HIGHWAY REQUIREMENTS IN ACCORDANCE WITH PERMITS.
  16. FOR ALLOWABLE LEAKAGE TEST USE FORMULA NO. 2, SPEC'S., SEC. 3F.
  17. ALL STATE AND LOCAL TRENCH SAFETY ORDERS WILL BE STRICTLY ENFORCED.

COLLECT CHARGES AS INDICATED  
*L. Curtis 7/26/67*

PROFILE, ALIGNMENT AND GRADE OF  
**SANITARY SEWERS** PAGE 1

TO BE CONSTRUCTED IN  
**ALBERTSON RANCH  
 TO SERVE  
 WESTLAKE VILLAGE RESTAURANT  
 AND MOTEL SITE  
 (PRIVATE SEWERS)  
 PRIVATE CONTRACT NO. 7900**

W.S. 55  
 2 SHEETS, 3 PAGES

SCALE: HORIZ. 1"=40' VERT. 1"=4'  
 JULY, 1967

PREPARED IN THE OFFICES OF

*George J. Anderson*  
 REG. C.E. NO. 15910

40184

FOR LEGEND SEE PLAN NO. S-1

NOTE:  
 GRADES TO WHICH THIS IMPROVEMENT IS TO BE CONSTRUCTED ARE SHOWN ON PLANS AND PROFILES. GRADE POINTS FOR TOP OF CURBS, CENTER LINE OF STREETS, OR CENTER LINE OF ALLEYS ARE SHOWN BY CIRCLES ON PROFILES. AT ALL POINTS BETWEEN DESIGNATED POINTS THE GRADE SHALL BE ESTABLISHED SO AS TO CONFORM TO A STRAIGHT LINE DRAWN BETWEEN SAID DESIGNATED POINTS. ELEVATIONS ARE IN FEET ABOVE U.S.C. & G.S. 3rd EDITION DATUM OF 1929.

THIS DRAWING AND THE DATA HEREON ARE HEREBY MADE A PART OF THE SPECIFICATIONS.

WORK SHALL BE CONSTRUCTED ACCORDING TO STANDARD SPECIFICATIONS RATED NOT LESS THAN 20% ALLOWANCE ON PIPE IN THE OPINION OF THE COUNTY ENGINEER AND SHALL BE PROSECUTED ONLY IN THE PRESENCE OF THE COUNTY ENGINEER.

BEFORE WORK CAN BE STARTED, THE CONTRACTOR MUST OBTAIN A PERMIT TO EXCAVATE IN COUNTY STREETS FROM THE L.A. COUNTY ROAD DEPT., DISTRICT OFFICE, 2000 S. G STREET, LOS ANGELES, CALIFORNIA. REGIONAL OFFICE, SUPPLY TO COVER THE COST OF CONSTRUCTION INSPECTION AND RECORD PLANS.

APPROVAL OF THIS PLAN BY THE COUNTY OF LOS ANGELES DOES NOT CONSTITUTE A REPRESENTATION AS TO THE ACCURACY OF THE LOCATION OF OR THE EXISTENCE OR NON-EXISTENCE OF ANY UNDERGROUND UTILITY PIPE, OR STRUCTURE WITHIN THE LIMITS OF THE PROJECT. THIS NOTE APPLIES TO ALL PAGES.

IF WORK IS TO BE DONE IN A STATE HIGHWAY, A PERMIT MUST BE OBTAINED FROM THE STATE OF CALIFORNIA, DIVISION OF HIGHWAYS, 120 SOUTH SPRING STREET, LOS ANGELES, CALIFORNIA.

COUNTY OF LOS ANGELES, CALIFORNIA  
 JOHN A. LAMBE, COUNTY ENGINEER

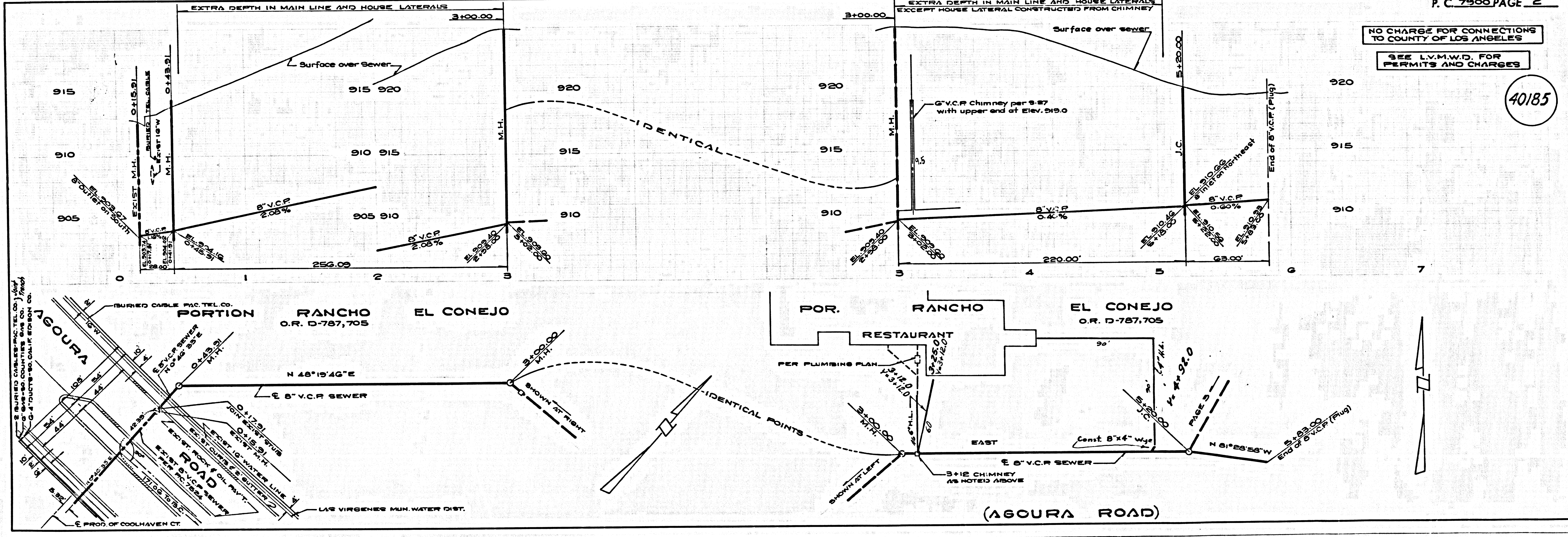
APPROVED BY: *Richard M. Cren*  
 ASSISTANT SANITATION ENGINEER

APPROVED BY: *Wes Slakes*  
 GENERAL MGR. CHIEF ENGINEER

SUBMITTED BY: *Robert M. Allen*  
 REGIONAL ENGINEER

CHECKED BY: *John Williams* 7-27-67  
 REG. C.E. NO. 12220

J.N. 0368.59



P.C. 7900 PAGE 2

NO CHARGE FOR CONNECTIONS TO COUNTY OF LOS ANGELES  
 SEE L.V.M.W.D. FOR PERMITS AND CHARGES

40185

NO CHARGE FOR CONNECTIONS TO COUNTY OF LOS ANGELES

SEE L.V.M.W.D. FOR PERMITS AND CHARGES

40186

