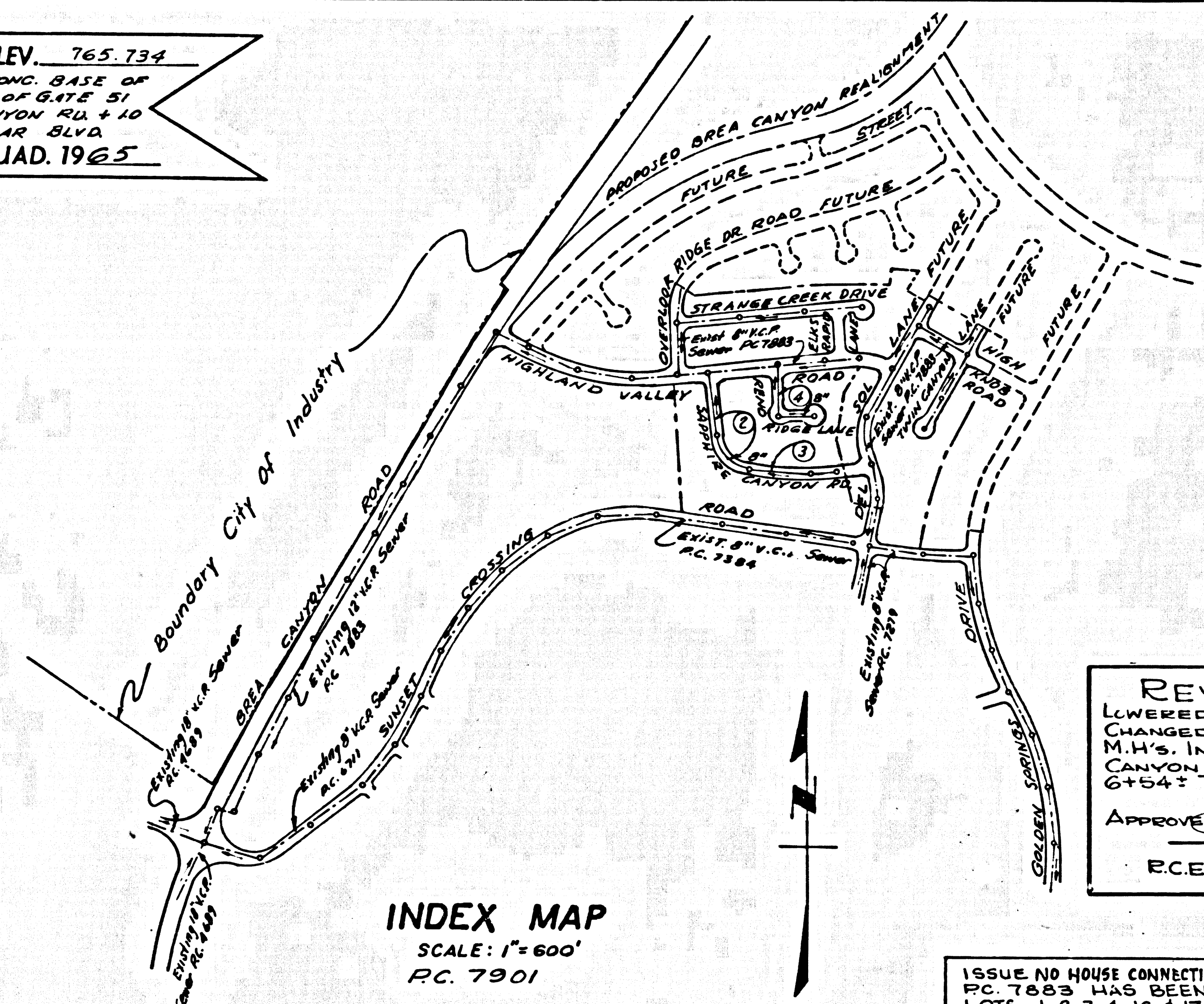


B.M. 89 2065 ELEV. 765.734
 R.D.M. TAG IN CONC. BASE OF
 FENCE POST 15 FT. S. OF S.W. COR. 51
 FT. W. OF BREA CANYON RD. & 10
 MI. N. OF DIAMOND BAR BLVD.
 OTTERBEIN QUAD. 1965



INDEX MAP
 SCALE: 1" = 600'
 P.C. 7901

REVISION
 LOWERED SEWER AND
 CHANGED LOCATION OF TWO
 M.H.'S. IN SAPPHIRE
 CANYON ROAD FROM STA
 6+54.7 TO STA. 12+26.60
 APPROVED: *[Signature]*
 P.C.E. 10443 1-27-67

ISSUE NO HOUSE CONNECTION PERMITS UNTIL
 P.C. 7883 HAS BEEN ACCEPTED.
 LOTS 1, 2, 3, 4, 19 & 21 ARE SERVED
 BY P.C. 7883 ON HIGHLAND
 VALLEY ROAD PAGE 8 & 9.

DOUBLE SCALE
 SAN DIMAS BLDG. DIST. NO. 10

- NOTES:
1. PROVIDE STAKES ON THE PROPERTY LINE OR PROPERTY LINES PRODUCED AT RIGHT ANGLES TO THE SEWER LINE AT THE CENTER LINE OF EACH MANHOLE.
 2. NO REPRESENTATIVE OF THE COUNTY ENGINEER WILL SURVEY OR LAY OUT ANY PORTION OF THE WORK.
 3. THE PRIVATE ENGINEER SHALL FURNISH THE COUNTY ENGINEER WITH GRADE SHEETS AND STATIONING FOR ALL HOUSE LATERALS AND "Y" BRANCHES AND SHALL PROVIDE STAKES FOR THEM AT THEIR PROPER LOCATIONS WITH STATIONING PLAINLY MARKED. ALL HOUSE LATERALS SHALL BE CONSTRUCTED IN A STRAIGHT ALIGNMENT AT RIGHT ANGLES FROM THE MAIN LINE SEWER EXCEPT AS SHOWN ON THE PLANS. HOUSE LATERALS FROM CHIMNEYS SHALL NOT HAVE AN ANGLE OF LESS THAN 45° WITH THE MAIN LINE SEWER. ANY CHANGE IN ALIGNMENT SHALL BE REQUESTED IN WRITING BY THE PRIVATE ENGINEER.
 4. THE PRIVATE ENGINEER SHALL FURNISH THE HOUSE LATERAL DEPTH AT THE PROPERTY LINE BELOW THE TOP OF CURB ELEVATION FOR EACH HOUSE LATERAL ON THE GRADE SHEET.
 5. NO REVISIONS SHALL BE MADE IN THESE PLANS WITHOUT THE APPROVAL OF THE COUNTY ENGINEER.
 6. THE CONTRACTOR SHALL NOTIFY THE CONSTRUCTION DIVISION BY TELEPHONE, MADISON 9 4747, EXT. 8155, AT LEAST TWENTY-FOUR HOURS BEFORE STATING ANY WORK UNDER THIS CONTRACT.
 7. ALL STRUCTURES SHALL BE EITHER BRICK MANHOLES PER S-3 OR PRECAST CONCRETE MANHOLES PER S-3 OR S-6.
 8. USE STANDARD MANHOLE FRAMES AND COVERS, S-15, EXCEPT AS NOTED.
 9. MANHOLE TOPS IN UNIMPROVED RIGHTS-OF-WAY TO BE SIX INCHES ABOVE FINISHED GRADE.
 10. USE EXTRA STRENGTH PIPE. ALL PIPE IS STANDARD DEPTH EXCEPT AS NOTED.
 11. USE MECHANICAL COMPRESSION JOINTS FOR ALL V.C.P. JOINTS PER SPECS., SECS. 36, 40 & 41.
 12. IF A POWER POLE IS WITHIN THREE FEET OF THE SEWER, THE SEWER SHALL BE ENCASED, PER S-25, TWO FEET ON EACH SIDE FROM THE POINT OF INTERFERENCE.
 13. IF DURING THE COURSE OF CONSTRUCTION IT IS DETERMINED THAT THERE IS LESS THAN FOUR FEET OF COVER OVER THE TOP OF A MAIN LINE OR HOUSE LATERAL V.C.P. SEWER WHICH IS NOT INDICATED ON THE PLANS, THE PIPE SHALL BE ENCASED PER S-25, UNLESS OTHERWISE APPROVED BY THE COUNTY ENGINEER.
 14. HOUSE LATERALS TO BE CONSTRUCTED WITH INVERTS AT PROPERTY LINE 4 FEET BELOW CURB GRADE EXCEPT AS NOTED.
 15. RESURFACE ALL TRENCHES WITHIN PAVED AREAS TO MEET L.A. COUNTY ROAD DEPT. OR CALIFORNIA STATE HIGHWAY REQUIREMENTS IN ACCORDANCE WITH PERMITS.
 16. FOR ALLOWABLE LEAKAGE TEST USE FORMULA NO. 2, SPECS., SEC. 34.
 17. ALL STATE AND LOCAL TRENCH SAFETY ORDERS WILL BE STRICTLY ENFORCED.
 18. "Y" BRANCHES MAY BE USED INSTEAD OF "WYE" BRANCHES IN ALL LOCATIONS EXCEPT AS NOTED.

County Sanitation Districts shall be notified prior to the following so that required inspection can be made (Phone: 337-1029)

- (1) Commencement of construction of manholes on District trunk sewer.
- (2) Breaking into existing manhole on District trunk sewer.
- (3) Commencement of District trunk sewer.
- (4) Construction of house connections to District trunk sewer.
- (5) Acceptance of the project.

COLLECT CHARGES
 AS INDICATED
 See Pages 10-31-67

NO CONNECTIONS FOR THE DISPOSAL OF INDUSTRIAL WASTES SHALL BE MADE TO SEWERS SHOWN ON THESE DRAWINGS WITHOUT WRITTEN PERMISSION FROM THE CHIEF ENGINEER AND GENERAL MANAGER OF THE COUNTY SANITATION DISTRICTS.

PROFILE, ALIGNMENT AND GRADE OF
 SANITARY SEWERS PAGE 1
 CONSTRUCTED IN

TRACT No 27537
 PRIVATE CONTRACT NO. 7901

W.S. 39-C2
 2 SHEETS, 4 PAGES
 SCALE: VERT. 1" = 5' AUGUST, 1967
 PREPARED IN THE OFFICES OF
 TRI-STATE ENGINEERING COMPANY
 615 SOUTH RAYMOND AVENUE, FULLERTON
 BY: *[Signature]*
 REG. C. E. No. 12,827

39602

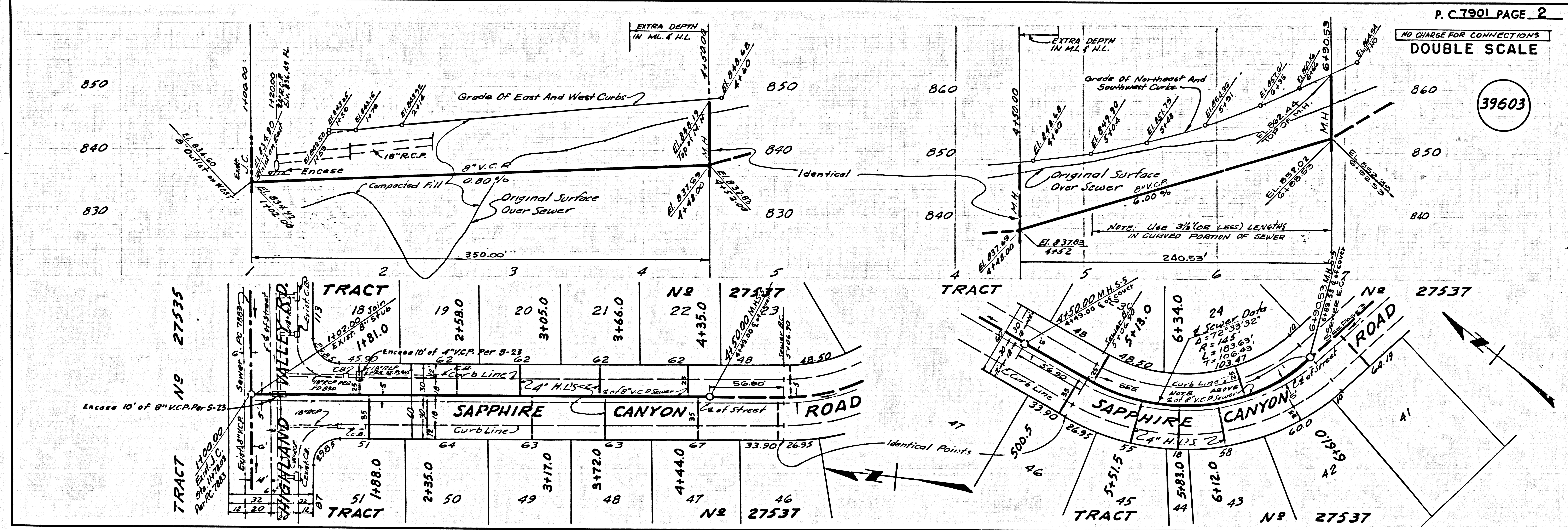
FOR LEGEND SEE PLAN NO. S-1

NOTE:
 GRADES TO WHICH THE IMPROVEMENT IS TO BE CONSTRUCTED ARE SHOWN ON PLANS AND PROFILES. GRADE POINTS FOR TOP OF CURB, CENTER LINE OF STREETS, OR CENTER LINE OF ALLEYS ARE SHOWN BY CIRCLES ON PROFILES. AT ALL POINTS BETWEEN DESIGNATED POINTS THE GRADE SHALL BE ESTABLISHED SO AS TO CONFORM TO A STRAIGHT LINE DRAWN BETWEEN SAID DESIGNATED POINTS. ELEVATIONS ARE IN FEET ABOVE U.S.C. & G.S. SEA LEVEL DATUM OF 1929.
 THIS DRAWING AND THE DATA HEREON ARE HEREBY MADE A PART OF THE SPECIFICATIONS FOR THE WORK TO BE CONSTRUCTED. THE CONTRACTOR MUST OBTAIN A PERMIT TO OCCUPY IN COUNTY STREETS FROM THE L.A. COUNTY ROAD DEPT., DISTRICT OFFICE NO. 1, AND PAY A FEE TO THE COUNTY ENGINEER, ROOM 320, COUNTY ENGINEERING BUILDING, ONE WEST BRIDGE STREET, LOS ANGELES, CALIFORNIA, REGIONAL OFFICE, SUFFICIENT TO COVER THE COST OF CONSTRUCTION INSPECTION AND RECORD PLANS.
 APPROVAL OF THIS PLAN BY THE COUNTY OF LOS ANGELES DOES NOT CONSTITUTE A REPRESENTATION AS TO THE ACCURACY OF THE LOCATION OF OR THE EXISTENCE OR NON-EXISTENCE OF ANY UNDERGROUND UTILITY PIPE, OR STRUCTURE WITHIN THE LIMITS OF THE PROJECT. THIS NOTE APPLIES TO ALL PAGES.
 IF WORK IS TO BE DONE IN A STATE HIGHWAY, A PERMIT MUST BE OBTAINED FROM THE STATE OF CALIFORNIA, DIVISION OF HIGHWAYS, 120 SOUTH BRINK STREET, LOS ANGELES, CALIFORNIA.

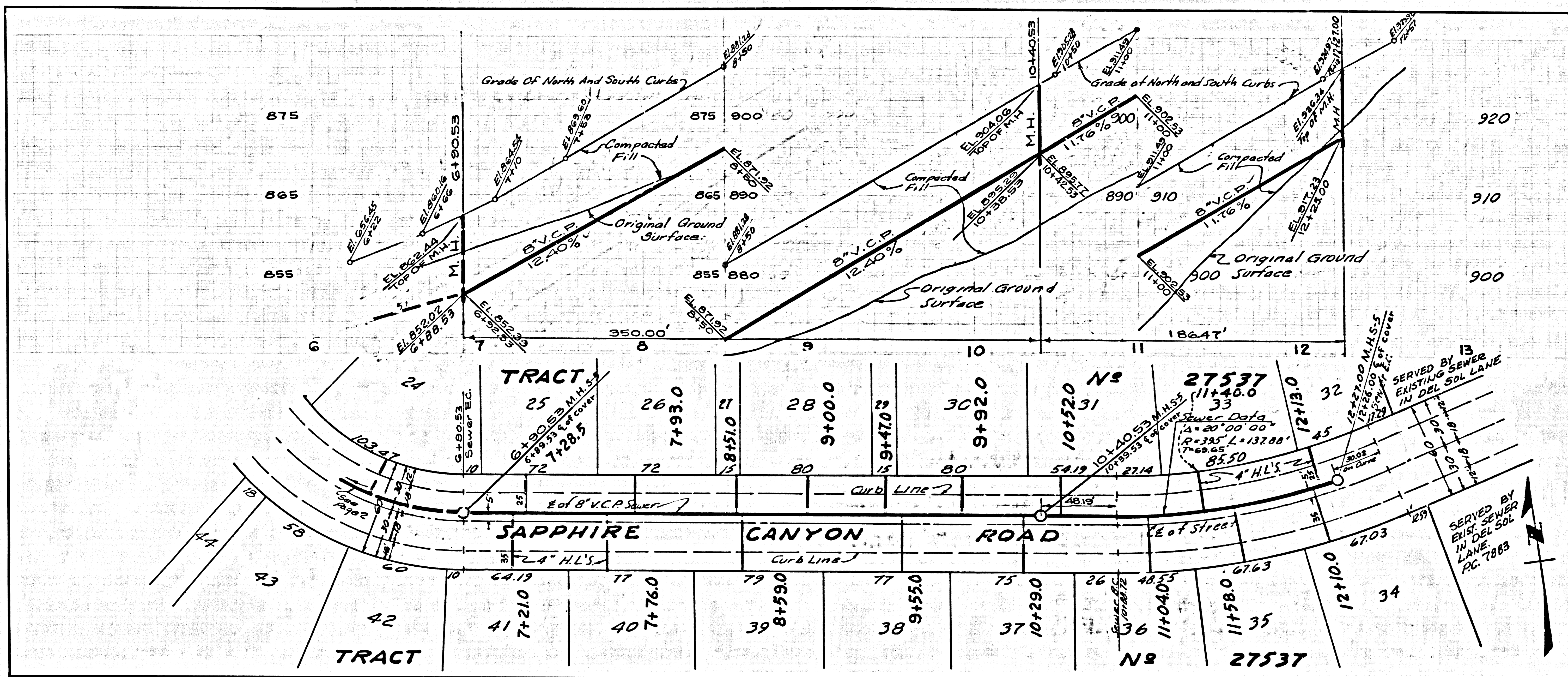
COUNTY OF LOS ANGELES, CALIFORNIA
 JOHN A. LAMBE, COUNTY ENGINEER J. D. PARKHURST, CHIEF ENGINEER
 CO. SAN. DIST. NO. 10
 APPROVED BY: *[Signature]* 11-14-67 APPROVED BY: *[Signature]* OFFICE ENGINEER

CHECKED BY: *[Signature]* 11-14-67
 REG. C. E. No. 10243

J.N. 0250.02



39604



39605

