

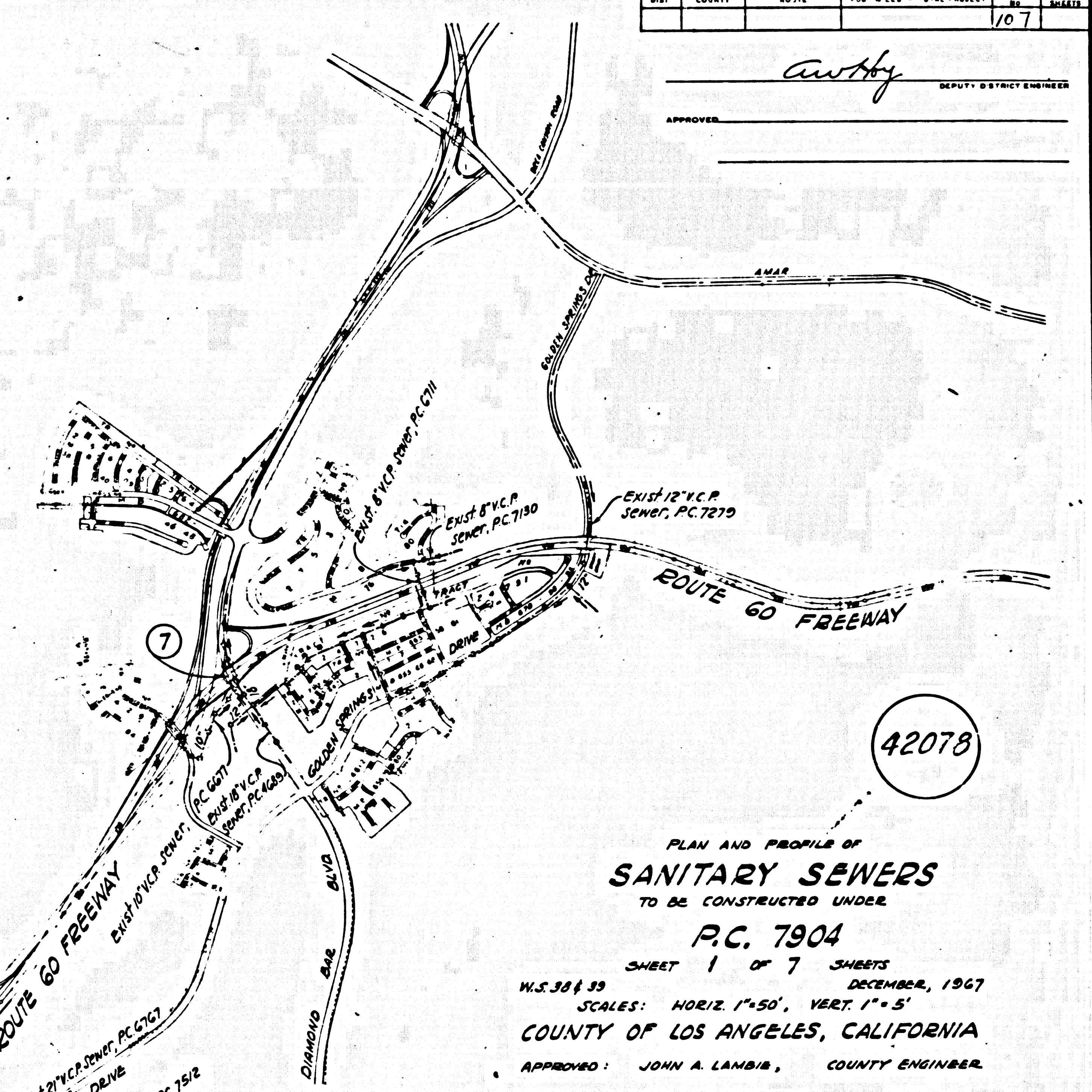
SEC. NO.	STATE	FEDERAL PROJECT NO.	SHEET NO.	TOTAL SHEETS	
7	CALIF.				
DIST.	COUNTY	ROUTE	POST MILES - TOTAL PROJECT	SHEET NO.	TOTAL SHEETS
				107	

APPROVED: Cawby DEPUTY DISTRICT ENGINEER

ESTIMATE OF QUANTITIES

SHEET NO.	21" VCP		18" VCP		12" VCP		8" VCP		DEEP TRENCH (12'+)		PCC ENCASUREMENT		RECONSTRUCT M.H.		SIPHON M.H.		BREAK INTO M.H.		STANDARD M.H.		ABANDON M.H.	
	L.F.	EA.	L.F.	EA.	L.F.	EA.	L.F.	EA.	L.F.	EA.	C.Y.	EA.	EA.	EA.	EA.	EA.	EA.	EA.	EA.	EA.	EA.	EA.
2													6									
3					334								1									
4																						3
5	362		702						485									1		3		
6					522						750							1		1		
7													7									

TOTALS: 362 702 522 334 485 750 13 1 2 4 3



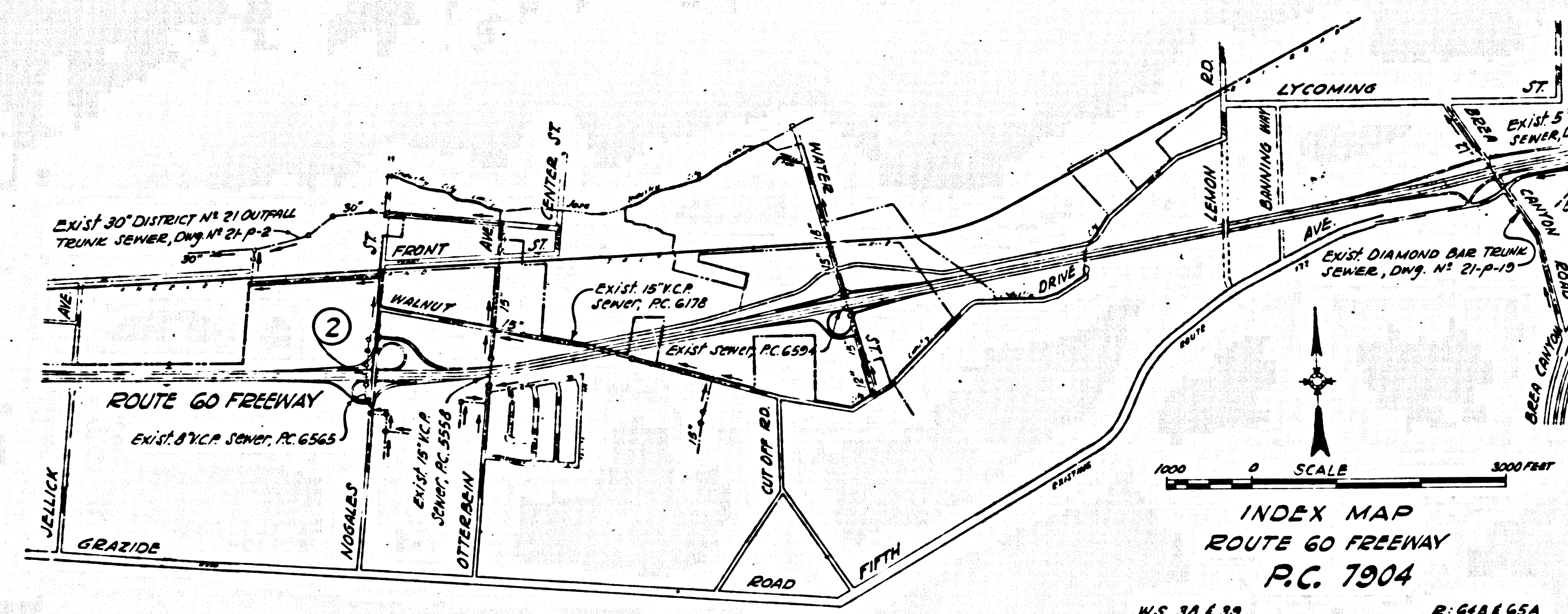
PLAN AND PROFILE OF SANITARY SEWERS TO BE CONSTRUCTED UNDER P.C. 7904

SHEET 1 OF 7 SHEETS
 W.S. 38433 DECEMBER, 1967
 SCALES: HORIZ 1"=50', VERT 1"=5'
 COUNTY OF LOS ANGELES, CALIFORNIA
 APPROVED: JOHN A. LAMBIS, COUNTY ENGINEER
 BY: Richard M. Cox 12-28-67
 ASSISTANT DIVISION ENGINEER
 SUBMITTED BY: Richard M. Cox 12-28-67
 S.S. 14330
 APPROVED: JOHN D. PARKHURST, CHIEF ENGINEER, COUNTY SANITATION DISTRICT NO. 21
 BY: J. Posternus
 OFFICE ENGINEER

- NOTES**
- Vitrified clay pipe shall be of the class designated as Extra Strength.
 - Mechanical compression joints shall be used with vitrified clay pipe.
 - Work performed on County Engineer or County Sanitation District sewers shall be in accordance with their respective Specifications and requirements insofar as materials and methods of construction are concerned.
 - Service agreements providing for sewer inspection by the County Engineer and by the County Sanitation Districts shall be in effect before construction is started on this project.
 - At least one day before sewer construction is started on P.C. 7904, the Resident Engineer shall notify the County Engineer (429-4747, Extension 81561) and the County Sanitation Districts (397-1025).

- County Sanitation Districts shall be notified prior to the following so that required inspection can be made (Phone: 337-1025):
- Commencement of construction of manhole on District trunk sewer.
 - Breaking into existing manhole on District trunk sewer.
 - Construction of District trunk sewer.
 - Construction of house connections to District trunk sewer.
 - Acceptance of the project.

NO CONNECTIONS FOR THE DISPOSAL OF INDUSTRIAL WASTES SHALL BE MADE TO SEWERS SHOWN ON THESE DRAWINGS WITHOUT WRITTEN PERMISSION FROM THE CHIEF ENGINEER AND GENERAL MANAGER OF THE COUNTY SANITATION DISTRICTS.



INDEX MAP ROUTE 60 FREEWAY P.C. 7904
 W.S. 38433 R. 618 & GSA

LEGEND

SEWERS TO BE ABANDONED: ---
 SEWERS TO BE CONSTRUCTED: ---
 EXISTING SEWERS: ---
 SEWER SHEET NUMBERS: (4)

DESIGN	DATE
Designed by	
Drawn by	
Checked by	
Supervised by	
Light of Way	

PROJECT ENGINEER DATE DESIGN ENGINEER DATE APPROVAL Recommended by DATE
 C. Strand 1/68 W.A. Griffin 1/68 C.D. Bartell 1/68

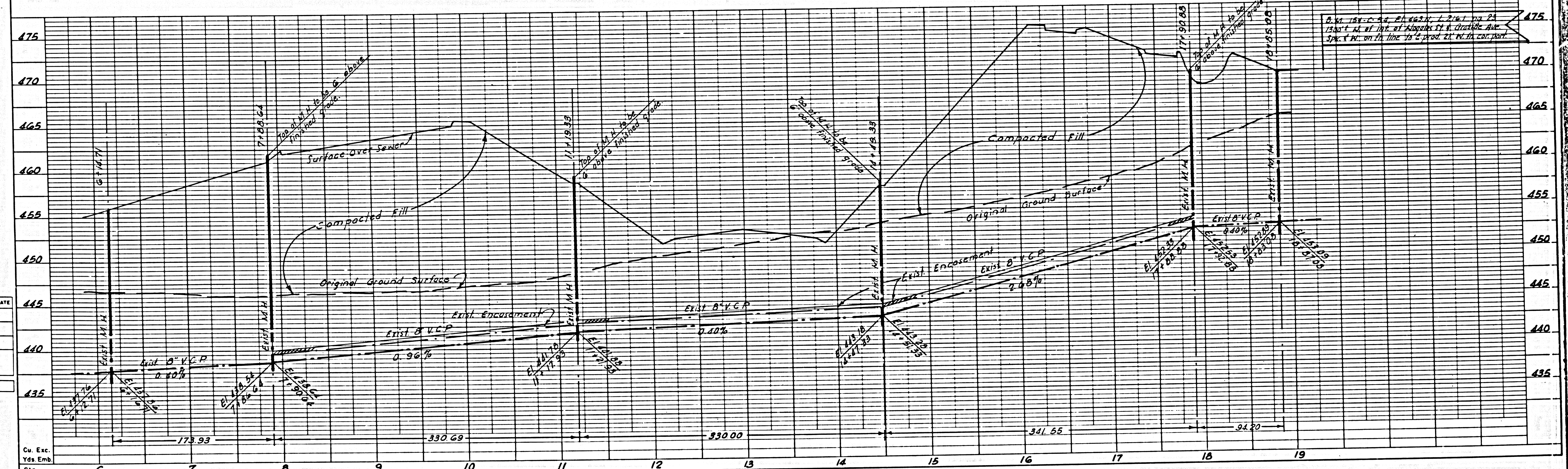
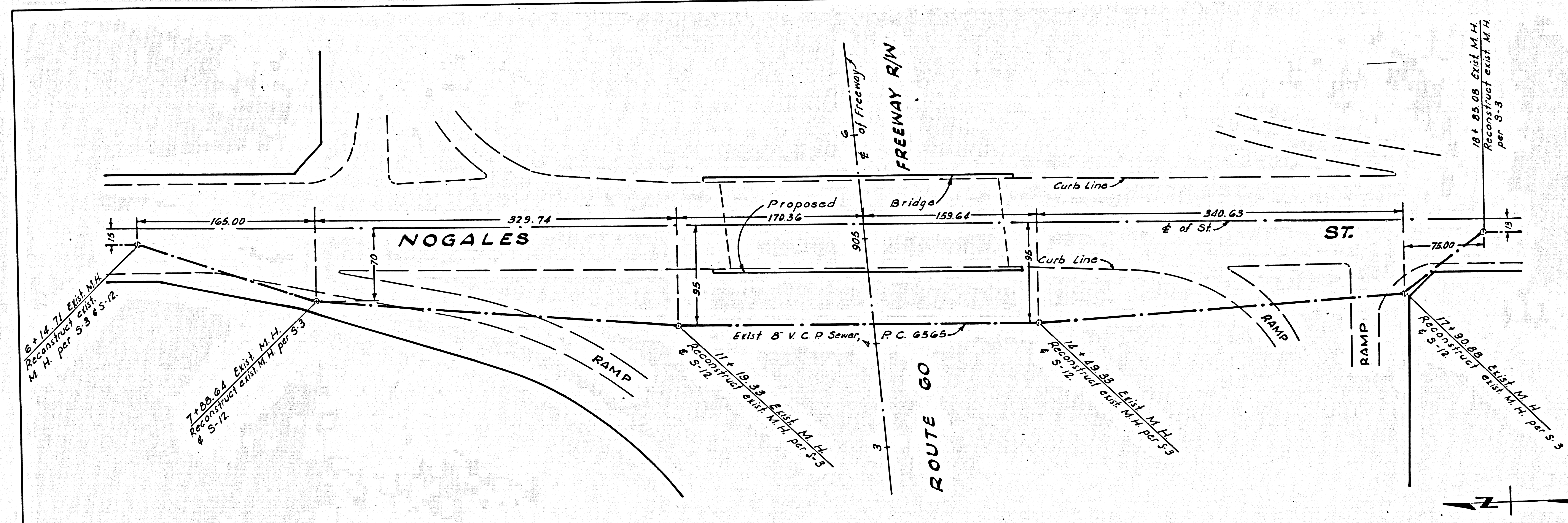
B.P.P. No.	STATE	FEDERAL PROJECT No.	FISCAL YEAR	SHEET No.	TOTAL SHEETS
	CALIF.			108	

APPROVED: *C. Strand*
 DEPUTY DISTRICT ENGINEER

P.C. 7904
 Sheet 2 of 7 Sheets

42079

NOTE
 To reconstruct each existing manhole shown, remove existing batter (approx. 5 vert. ft.) and extend manhole per S-3. If final depth of extended manhole will be greater than 22 ft. thickness of walls below this depth shall be 12 in., and the concrete base shall be extended to form a footing for the 12 in. brickwork.



DESIGNED	DEPT	INITIAL	DATE
TRACED			
CHECKED			
SUPERVISED BY			
RIGHT OF WAY			

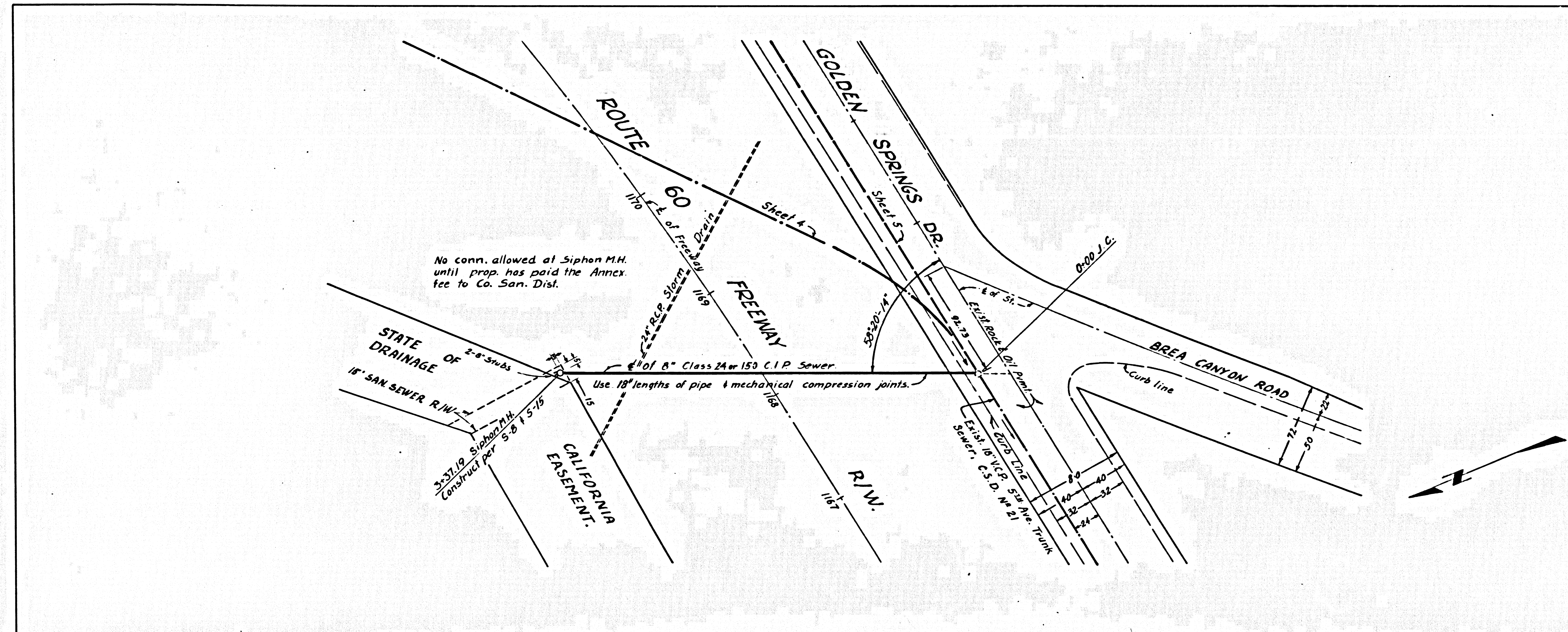
PROJECT ENGINEER	DATE	DESIGN ENGINEER	DATE	APPROVAL RECOMMENDED BY	DATE
C. Strand	1/69	M.H. Griffin	1/69	C.R. Bartell	1/69

DIST.	STATE	FEDERAL PROJECT No.	FISCAL YEAR	SHEET No.	TOTAL SHEETS
	CALIF.			169	

APPROVED: *Anthony*
 DEPUTY DISTRICT ENGINEER

P. C. 7904
 Sheet 3 of 7 sheets

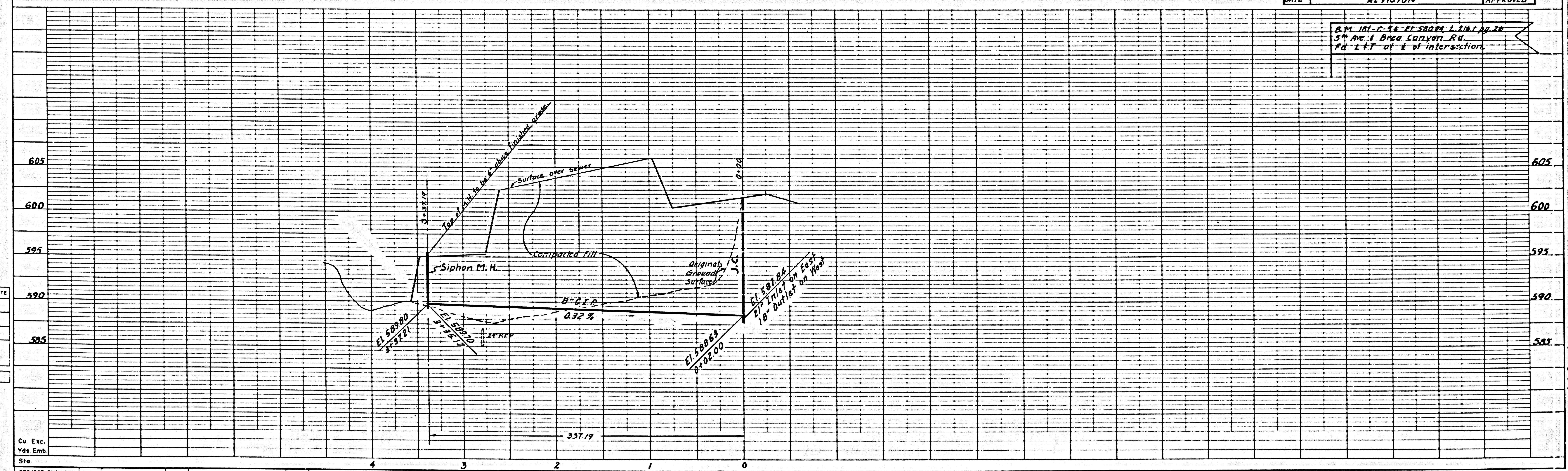
42080



- NOTES:
1. Before starting work on this sheet, the proposed compacted fill shall be in place to a minimum elev. of 594.
 2. In filled ground, pipe bedding shall be per Case III, 5-21.

DATE	REVISION	APPROVED
9/30/58	Changed Grade & Invert Elevations of main line sewer from station 0+00 to 3+27.19	<i>J. Williams</i>

AM 181-C-54, EL 580.04 L. 216.1, Pg. 26
 5th Ave. & Brea Canyon Rd.
 Fd. L&T at E of intersection.



DESIGN DEPT	INITIAL	DATE
DESIGNED		
TRACED		
CHECKED		
SUPERVISED BY		

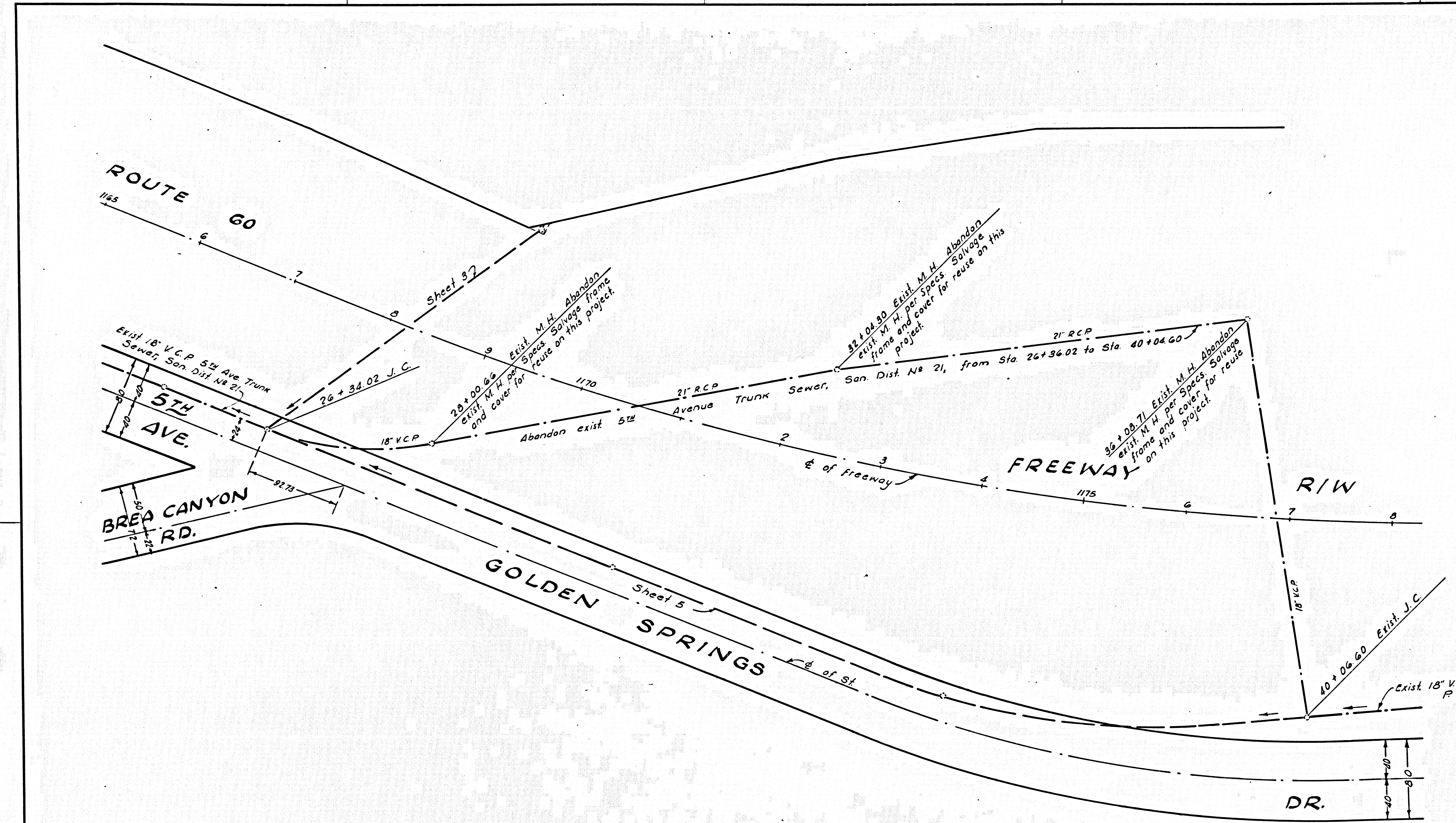
PROJECT ENGINEER	DATE	DESIGN ENGINEER	DATE	APPROVAL RECOMMENDED BY	DATE
C. Strand	1/68	W.M. Griffin	1/68	C.D. Bartell	1/68

REC. NO.	STATE	FEDERAL PROJECT NO.	FISCAL YEAR	SHEET NO.	TOTAL SHEETS
7	CALIF.			110	110

APPROVED: awhby DEPUTY DISTRICT ENGINEER

P.C. 7904
Sheet 4 of 7 Sheets

42081



DESIGN DEPT	INITIAL	DATE
DESIGNED		
TRACED		
CHECKED		
SUPERVISED BY		
PRINTED BY		

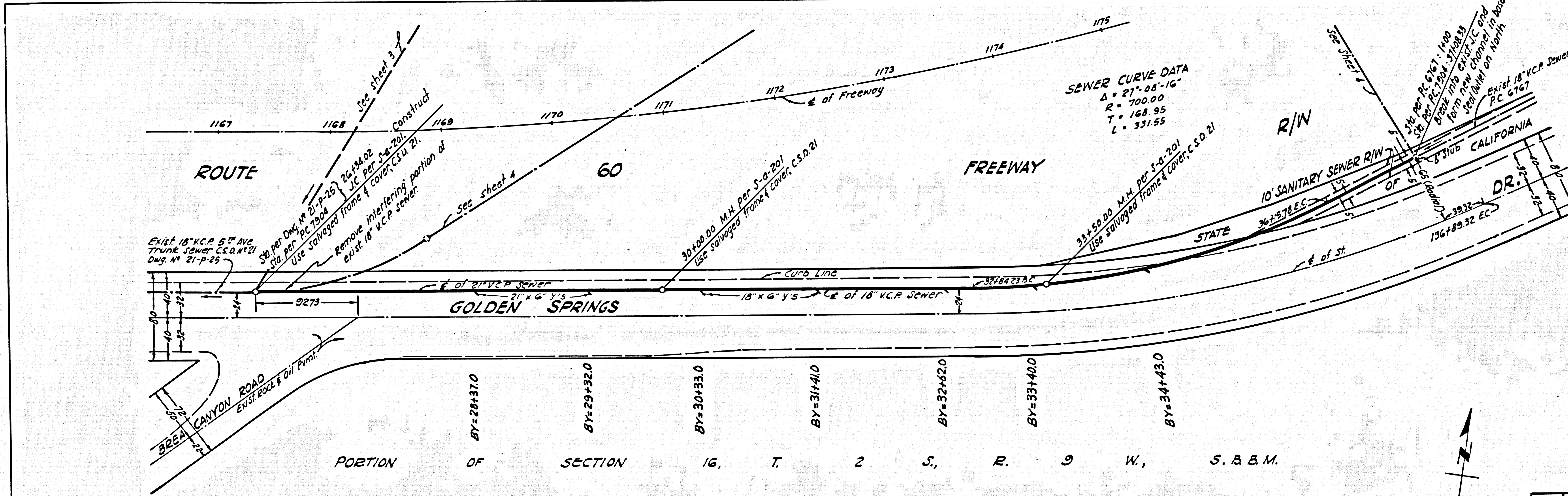
Project Engineer	Date	Design Engineer	Date	Approval Recommended By	Date
C. Strand	1/68	W.M. Griffin	1/68	C.D. Bartell	1/68

FED. AID DIST. NO.	STATE	FEDERAL PROJECT NO.	FISCAL YEAR	SHEET NO.	TOTAL SHEETS
	CALIF.			111	

APPROVED: *Anthony* DEPUTY DISTRICT ENGINEER

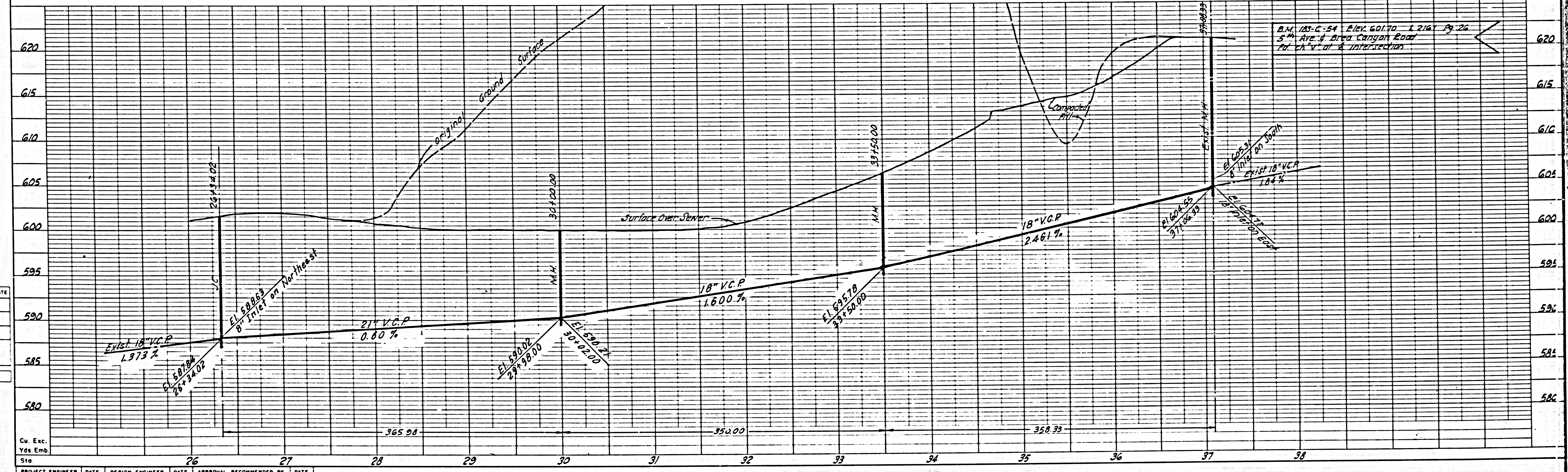
P.C. 7904
Sheet 5 of 7 Sheets

42082



- NOTES
- Contractor shall maintain sewage flow during construction. (Flow in Dec, 1967 was negligible.)
 - Prior to connecting to existing wyes County Sanitation District permit must be obtained.

DATE	REVISION	APPROVED
7/14/68	Changed Grade & Invert Elevations of main line sewer from station 26+34.02 to 37+08.33	<i>S. Bartell</i>



DESIGN DEPT	INITIAL	DATE
DESIGNED		
TRACED		
CHECKED		
SUPERVISED BY		
RIGHT OF WAY		

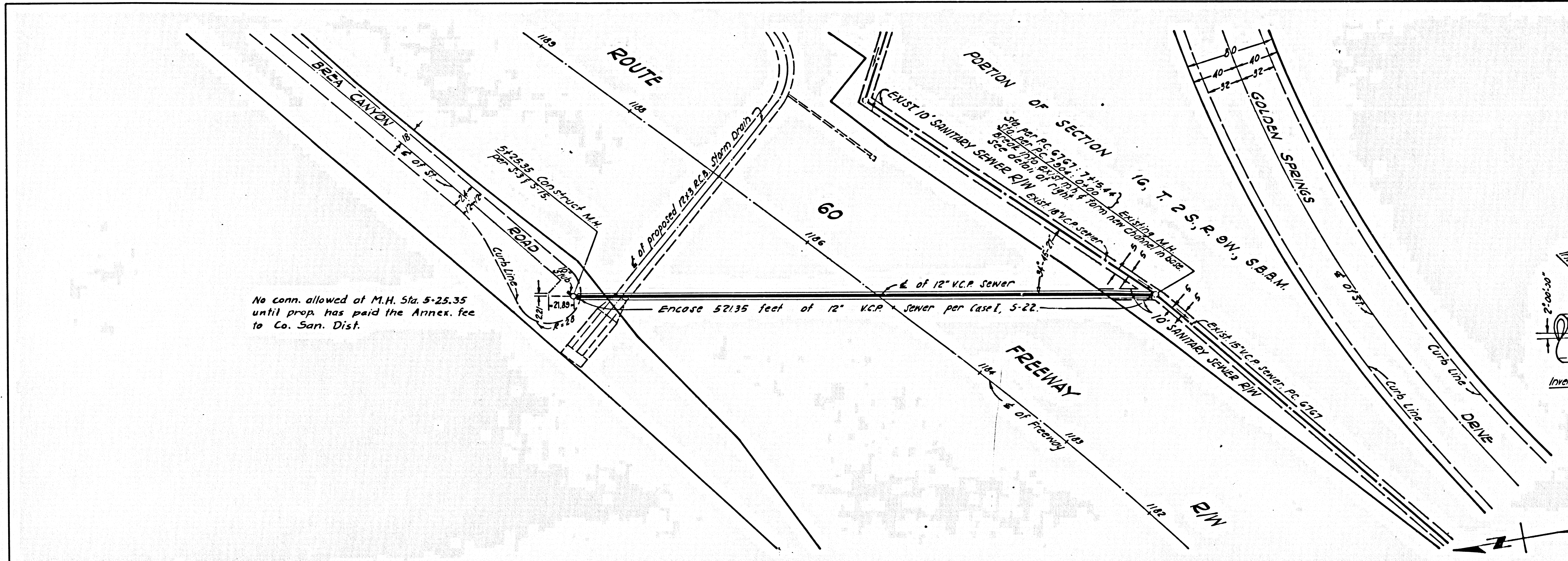
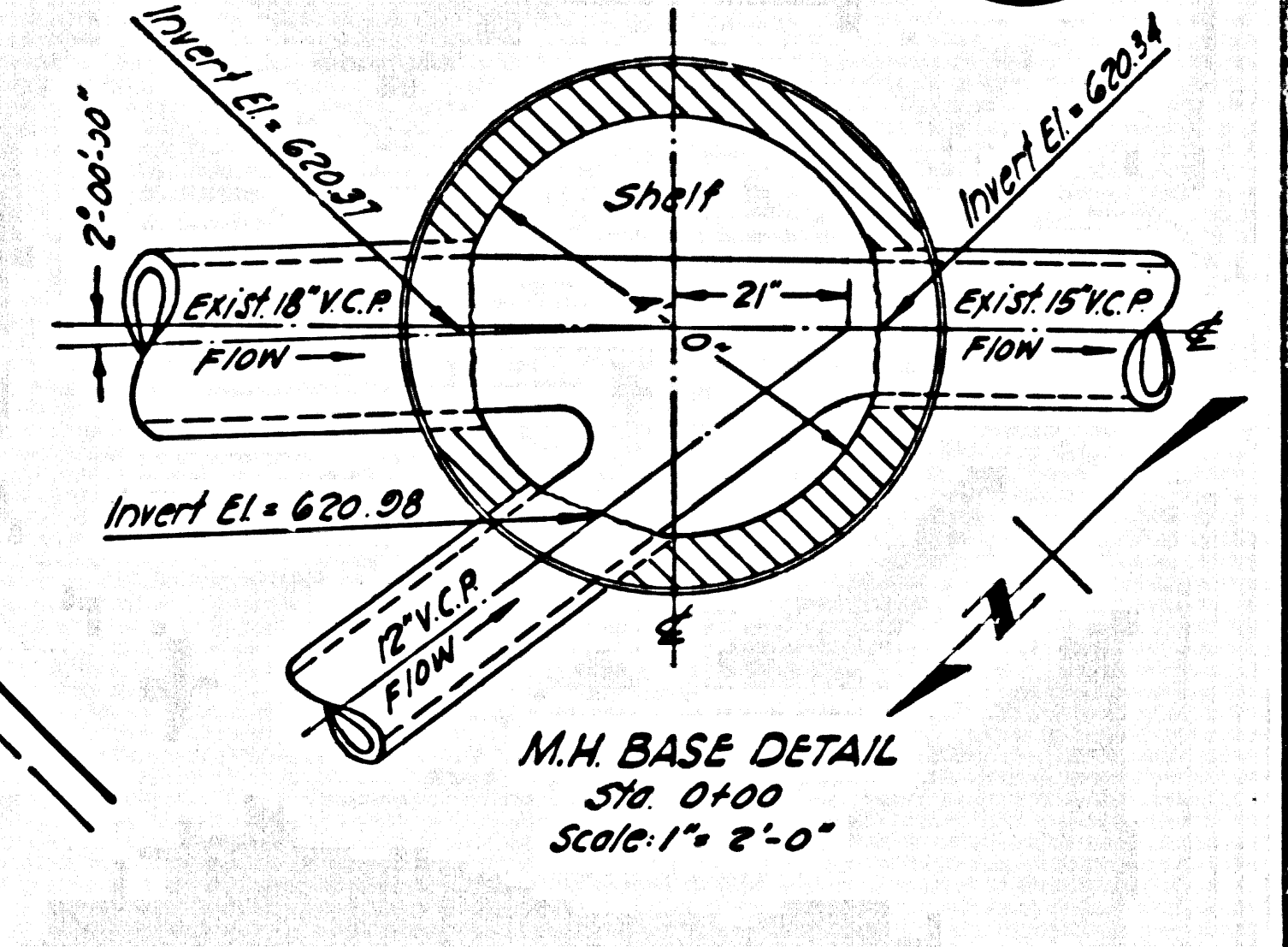
PROJECT ENGINEER	DATE	DESIGN ENGINEER	DATE	APPROVAL RECOMMENDED BY	DATE
C. Strand	1/68	N.M.G. J. B. B.	1/68	C.D. Bartell	1/68

D.P.R. No.	STATE	FEDERAL PROJECT No.	FISCAL YEAR	SHEET No.	TOTAL SHEETS
112	CALIF.			112	
DIST.	COUNTY	RD. No.	POST MILE	SECTION PROJECT	SHEET NO.
VII					112

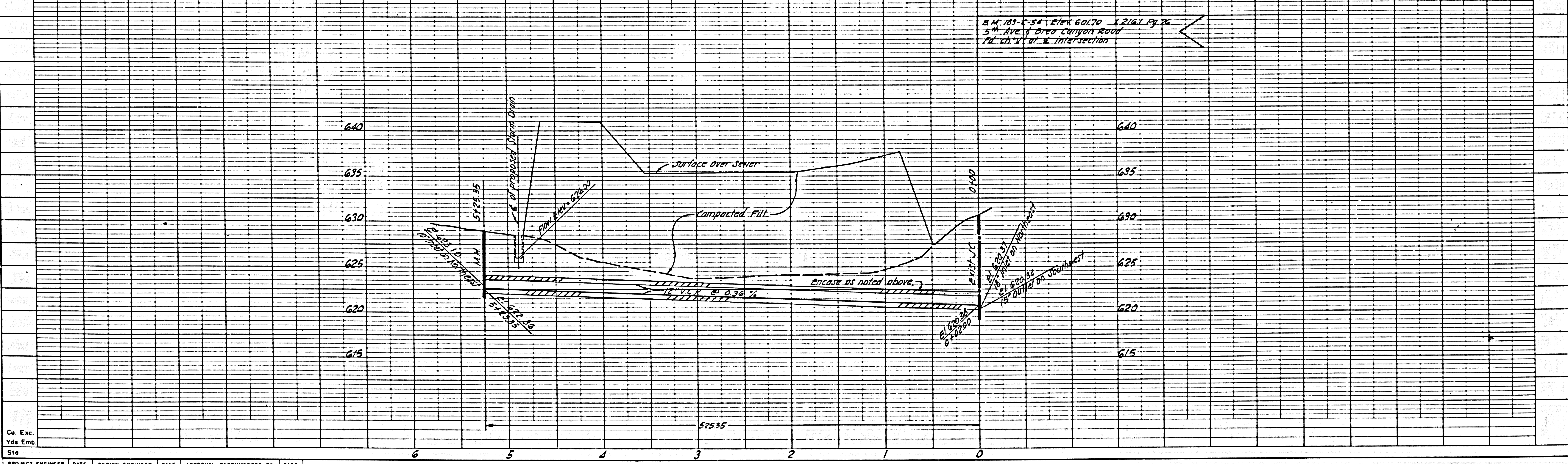
Anthony
DEPUTY DISTRICT ENGINEER

P. C. 7904
Sheet 6 of 7 Sheets

42083



No conn. allowed at M.H. Sta. 5-25.35 until prop. has paid the Annex. fee to Co. San. Dist.



DESIGN DEPT.	INITIAL	DATE
DESIGNED		
TRACED		
CHECKED		
SUPERVISED BY		
RIGHT OF WAY		

PROJECT ENGINEER	DATE	DESIGN ENGINEER	DATE	APPROVAL RECOMMENDED BY	DATE
C. Strand	1/68	W.M. Griffin	1/68	C.D. Bartell	1/68

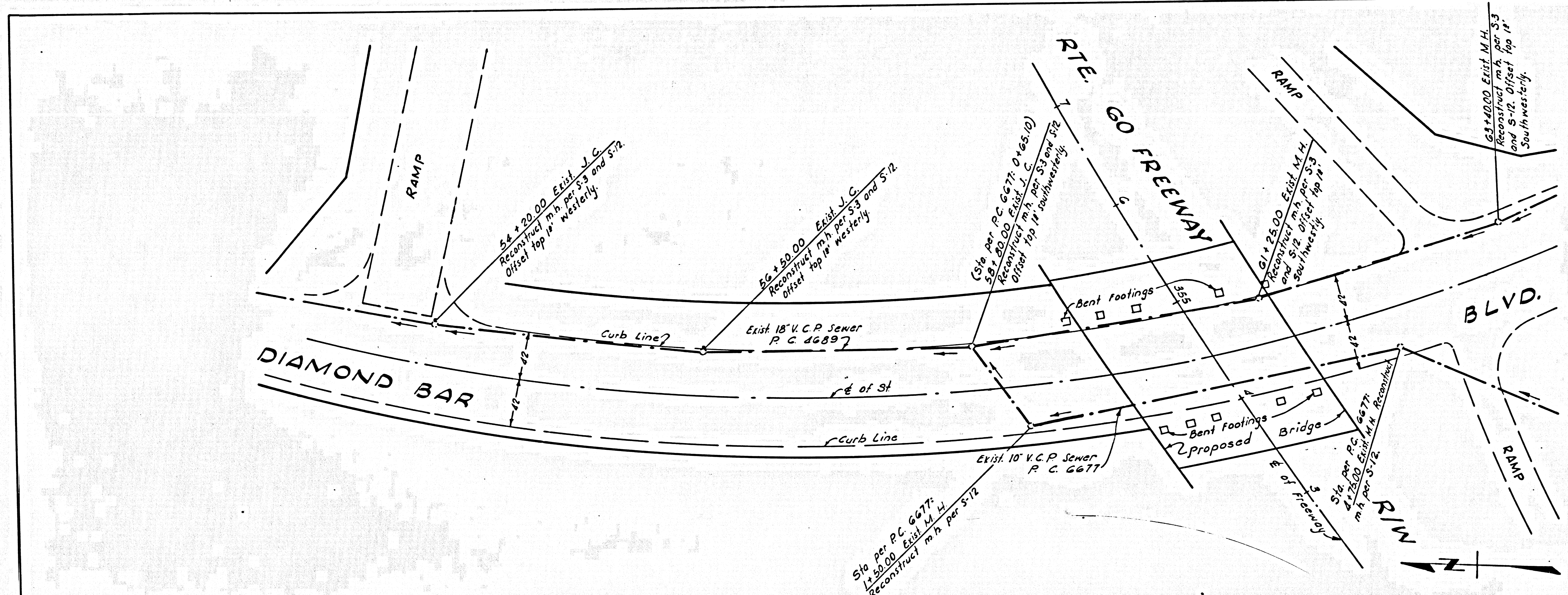
POST 39

FEDERAL PROJECT No.	FISCAL YEAR	SHEET No.	TOTAL SHEETS
		112	

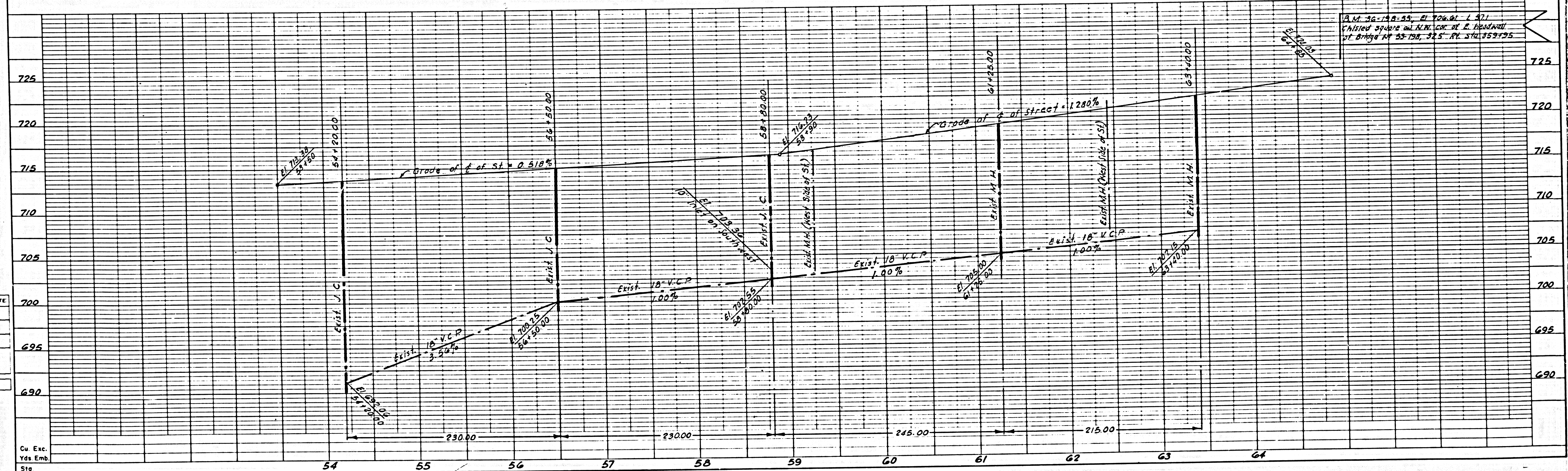
APPROVER: *Curtis*
 DEPUTY DISTRICT ENGINEER

P.C. 7904
 Sheet 7 of 7 Sheets

42084



NOTES
 Before and after bridge piles are driven, the sewer contractor shall provide television inspection, including video tape recordings, of the 18" V.C.P. sewer from Sta. 58+80 to 61+25 and the 10" V.C.P. sewer from Sta. 1+50 to 4+75. The Contractor shall be prepared to maintain flow if necessary. Max. design flows:
 1. 4,400 G.P.M. for 18" 1/2 full,
 2. 300 G.P.M. for 10" 1/2 full.



PLAN 30-158-33, PL. 706-01-1-971
 Revised Station on R.W. for E. Diamond Bar Bridge at 23+30, 32.5' PL. STA. 359+95

DESIGN DEPT	INITIAL	DATE
DESIGNED		
TRACED		
CHECKED		
SUPERVISED BY		
PROJECT OF WAY		

PROJECT ENGINEER	DATE	DESIGN ENGINEER	DATE	APPROVAL RECOMMENDED BY	DATE
C. Strand	1/68	W.M. Griffin	1/68	C.D. Bartell	1/68