

### LENNOX BLDG. DIST. NO. 12

PROFILE, ALIGNMENT AND GRADE OF **P.C. 7910**  
**SANITARY SEWERS PAGE 1**  
 TO BE CONSTRUCTED IN  
**DOMINGUEZ STATE COLLEGE**  
**SEWER IN VICTORIA STREET**  
**PRIVATE CONTRACT NO. 7910**

w.s. 26  
 1 SHEET, 2 PAGES

39910

SCALE: VERT. 1" = 4'  
 HORIZ. 1" = 40'

PREPARED IN THE OFFICES OF  
**SHUIHWAH AND ROGOWAY**  
 56-57 WILSHIRE BLVD.  
 LOS ANGELES, CALIF.  
 REG. C. E. NO. 12415

FOR LEGEND SEE STANDARD DRAWING S-1

NOTE: GRADES TO WHICH THIS IMPROVEMENT IS TO BE CONSTRUCTED ARE SHOWN ON PLANS AND PROFILE. GRADE POINTS FOR TOP OF CURBS, CENTER LINE OF STREETS OR CENTER LINE OF ALLEYS ARE SHOWN BY CIRCLES ON PROFILE. AT ALL POINTS BETWEEN DESIGNATED POINTS THE GRADE SHALL BE ESTABLISHED SO AS TO CONFORM TO A STRAIGHT LINE DRAWN BETWEEN SAID DESIGNATED POINTS.

DEFINITIONS AND MEASUREMENTS ARE MADE AS FOLLOWS: U. S. C. & G. S. SEA LEVEL DATUM OF 1929. THESE DRAWINGS AND THE DATA HEREON ARE HEREBY MADE A PART OF THE PROPOSITION. THE CONTRACTOR SHALL BE RESPONSIBLE FOR VERIFYING THE ACCURACY OF THE DATA SHOWN ON THESE DRAWINGS. IF WORK IS TO BE DONE IN A STATE HIGHWAY, A PERMIT MUST BE OBTAINED FROM THE STATE OF CALIFORNIA, DIVISION OF HIGHWAYS, 120 SOUTH SPRING STREET, LOS ANGELES 5, CALIFORNIA.

- NOTES:
- PROVIDE STAKES ON THE PROPERTY LINE OR PROPERTY LINES PRODUCED AT RIGHT ANGLES TO THE SEWER LINE AT THE CENTER LINE OF EACH MANHOLE.
  - NO REPRESENTATIVE OF THE COUNTY ENGINEER WILL SURVEY OR LAYOUT ANY PORTION OF THE WORK.
  - THE PRIVATE ENGINEER SHALL FURNISH THE COUNTY ENGINEER WITH GRAD SHEDS AND STATIONING FOR ALL HOUSE LATERALS AND Y BRANCHES AND SHALL PROVIDE STAKES FOR THEM AT THEIR PROPER LOCATIONS WITH STATIONING AND PLAIN MARKERS. ANY CHANGE IN ALIGNMENT SHALL BE REQUESTED IN WRITING BY THE PRIVATE ENGINEER.
  - NO REVISIONS SHALL BE MADE IN THESE PLANS WITHOUT THE APPROVAL OF THE COUNTY ENGINEER.
  - USE STANDARD MANHOLE FRAMES AND COVERS, S-15, EXCEPT AS NOTED.
  - USE EXTRA STRENGTH PIPE. ALL PIPE IS STANDARD DEPTH EXCEPT AS NOTED.
  - USE MECHANICAL COMPRESSION JOINTS FOR ALL V.C.P. JOINTS PER SPECS, SECS. 36, 48 & 49.
  - RESURFACE ALL TRENCHES WITHIN 10 FEET OF THE SEWER WITH A COUNTY ROAD DEPT. OR CALIF. STATE HIGHWAY DEPT. FINISHMENTS IN ACCORDANCE WITH PERMITS.
  - IF A POWER POLE IS WITHIN THREE FEET OF THE SEWER, SHALL BE ENCASED, PER S-23, TWO FEET ON EACH SIDE. HOUSE LATERALS TO BE CONSTRUCTED WITH INVERTS AT PROPERTY LINE, 8 FEET BELOW CURB GRADE EXCEPT AS NOTED.
  - FOR ALLOWANCE LEAKAGE TEST USE FORMULA NO. 2 PER S-15, SEC. 34.
  - MANHOLE TOPS IN UNIMPROVED RIGHTS-OF-WAY TO BE 2" ABOVE FINISHED GRADE.
  - THE CONTRACTOR SHALL NOTIFY THE CONSTRUCTION DIVISION BY TELEPHONE, MADISON 9-4747, EXT. #1541, AT LEAST TWENTY-FOUR HOURS BEFORE STARTING ANY WORK UNDER THIS CONTRACT.
  - NO REVISIONS SHALL BE MADE IN THESE PLANS WITHOUT THE APPROVAL OF THE COUNTY ENGINEER.
  - ALL STATE AND LOCAL TRENCH SAFETY ORDERS WILL BE STRICTLY ENFORCED.
  - MANHOLES SHALL BE BRICK SEWER STRUCTURES PER S-3 ON PRECAST CONCRETE MANHOLES PER S-5 OR S-6, EXCEPT AS NOTED.
  - THE EXISTENCE AND LOCATION OF ANY UNDERGROUND UTILITY PIPES, CONDUITS, OR STRUCTURES SHOWN ON THESE PLANS ARE OBTAINED BY A SEARCH OF THE AVAILABLE RECORDS TO THE BEST OF OUR KNOWLEDGE. THERE ARE NO EXISTING UTILITY PIPES EXCEPT AS SHOWN ON THESE PLANS. THE CONTRACTOR IS REQUIRED TO TAKE DUE PRECAUTIONARY MEASURES TO PROTECT THE UTILITY LINES SHOWN AND ANY OTHER LINES NOT ON RECORD OR NOT SHOWN ON THESE DRAWINGS. THE CONTRACTOR FURTHER ASSUMES ALL LIABILITY AND RESPONSIBILITY FOR THE UTILITY PIPES, CONDUITS, LINES OR STRUCTURES SHOWN OR NOT SHOWN ON THESE DRAWINGS.
  - CONTRACTOR SHALL PAY A FEE TO THE COUNTY ENGINEER, ROOM 330, COUNTY ENGINEERING BUILDING, 108 WEST SECOND STREET ON PALMS VERDES-CENTINELA VALLEY REGIONAL OFFICE SUFFICIENT TO COVER THE COST OF CONSTRUCTION, INSPECTION, AND RECORD PLANS.
  - ALL JOINTS BETWEEN CAST IRON PIPE AND VITRIFIED CLAY PIPE SHALL BE MADE WITH A RUBBER SLEEVE JOINT TYPE "C" & "D" (WITH BUSHING IF NECESSARY) PER STANDARD SPECIFICATIONS, SECTION 36 OR APPROVED EQUAL.

COLLECT CHARGES AS INDICATED

NO CONNECTIONS FOR THE DISPOSAL OF INDUSTRIAL WASTES SHALL BE MADE TO SEWERS SHOWN ON THESE DRAWINGS WITHOUT WRITTEN PERMISSION FROM THE CHIEF ENGINEER AND GENERAL MANAGER OF THE COUNTY SANITATION DISTRICTS.

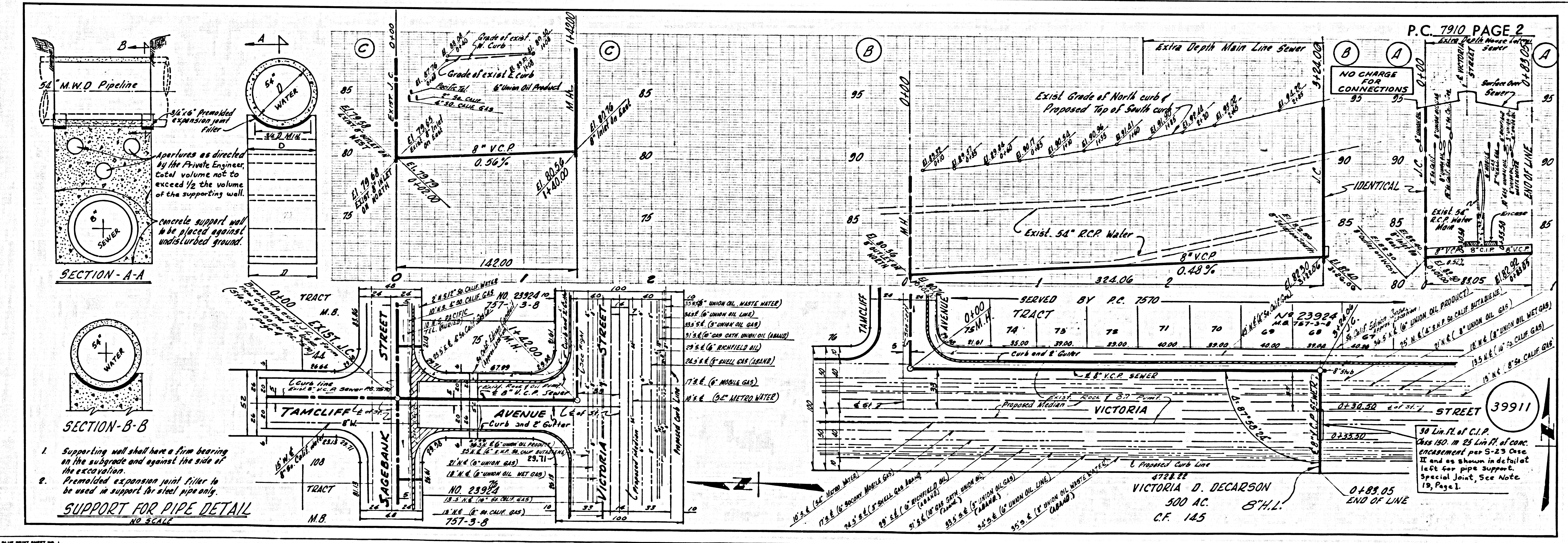
COUNTY OF LOS ANGELES, CALIFORNIA

JOHN A. LAMBE, COUNTY ENGINEER  
 J. D. PARK HURST, CHIEF ENGINEER

APPROVED BY **Robert Williams** REGIONAL ENGINEER  
 BY **J. D. Park Hurst** CHIEF ENGINEER

CHECKED BY **Paul J. Volante** 2-9-68  
 REG. C. E. NO. 10653

J.N. 0368.62



SECTION - A-A

SECTION - B-B

1. Supporting wall shall have a firm bearing on the subgrade and against the side of the excavation.

2. Premolded expansion joint filter to be used in support for steel pipe only.

SUPPORT FOR PIPE DETAIL NO. 3242

39911

SERVED BY P.C. 7570

VICTORIA D. DECARSON  
 500 AC.  
 C.F. 145

50 Lin. Ft. of C.I.P. 18" dia. 24' length of conc. manhole set per S-23 Case II and as shown in detail left for pipe support. Special Joint. See Note 19, Page 1.