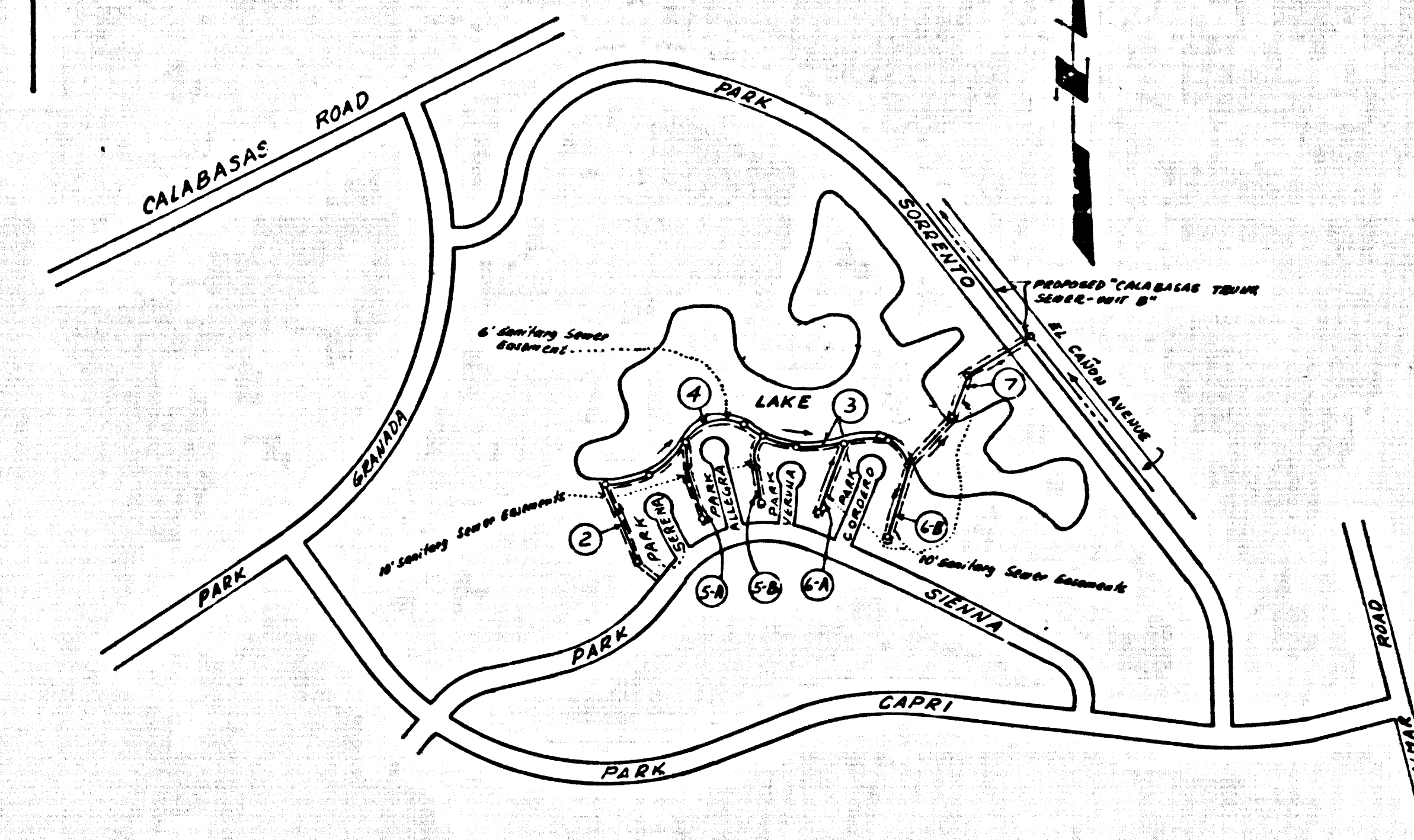


B.M. #SY 4929 ELEV. 920.634  
 A.D.M. TAG CONC. CO. 5' SE GUARD  
 HOUSE ENTRANCE TO HIDDEN HILLS  
 2 1/2 NORTH W. LONG VALLEY RD. (PRIVATE  
 ROAD)  
 MALIBU QUAD. 1960



INDEX MAP  
 SCALE 1" = 600'  
 P.C. 7919

**TESTING:**  
 1. INFILTRATION AND LEAKAGE TEST: METHOD USED FOR TESTING WILL BE THE SAME AS LOS ANGELES COUNTY EXCEPT THE FORMULA TO BE USED IS AS FOLLOWS: 0.033 GALLOUS/MINUTE/INCH OF DIAMETER/1000 FEET OR 250 GALLOUS/DAY/INCH OF DIAMETER/1 MI.  
 2. MANHOLE LEAKAGE TEST: AT THE DISCRETION OF THE DISTRICT'S REPRESENTATIVE ONE MANHOLE OUT OF 10 MANHOLES AND A MINIMUM OF TWO WILL BE FILLED WITH WATER AND AFTER THREE HOURS WILL BE CHECKED FOR LEAKAGE WITH A DROP IN LEVEL. FOR EVERY MANHOLE NOT PASSING TESTS, FIVE MORE WILL BE TESTED AT THE DISCRETION OF THE DISTRICT'S REPRESENTATIVE.  
 3. AIR TESTING: WHERE THE DIFFERENCE IN ELEVATION BETWEEN THE INVERT OF THE UPPER STRUCTURE AND THE INVERT OF THE LOWER STRUCTURE IS MORE THAN SIX FEET (6) AN AIR TEST WILL BE MADE:  
 THE TIME TAKEN TO LOSE ONE (1) POUND PER SQUARE INCH GAUGE PRESSURE FROM THREE (3) POUNDS PER SQUARE INCH GAUGE PRESSURE TO TWO (2) POUNDS PER SQUARE INCH GAUGE PRESSURE SHALL NOT BE LESS THAN TIMES SHOWN ON THE FOLLOWING TABLE:  

MAIN PIPE DIAMETER	MINIMUM TIME LOSS
8" - 14"	1 MINUTE

 IF THE TIME IS LESS THAN LISTED IN TABLE ABOVE THE CONTRACTOR SHALL MAKE SUCH REPAIRS AS ARE NECESSARY TO ELIMINATE EXCESSIVE LEAKAGE. THE CONTRACTOR SHALL NOTIFY THE L.V.M.W.D. 48 HRS. PRIOR TO COMMENCING WORK: TELEPHONE 213-689-0110.

DOUBLE SCALE  
 CALABASAS BLDG. DIST. NO. 91

- NOTES:
1. PROVIDE STAKES ON THE PROPERTY LINE OR PROPERTY LINES PRODUCED AT RIGHT ANGLES TO THE SEWER LINE AT THE CENTER LINE OF EACH MANHOLE.
  2. NO REPRESENTATIVE OF THE COUNTY ENGINEER WILL SURVEY OR LAY OUT ANY PORTION OF THE WORK.
  3. THE PRIVATE ENGINEER SHALL FURNISH THE COUNTY ENGINEER WITH GRADE SHEETS AND STATIONING FOR ALL HOUSE LATERALS "T" OR "Y" BRANCHES AND SHALL PROVIDE STAKES FOR THEM AT THEIR PROPER LOCATIONS WITH STATIONING PLAINLY MARKED. ALL HOUSE LATERALS SHALL BE CONSTRUCTED IN A STRAIGHT ALIGNMENT AT RIGHT ANGLES FROM THE MAIN LINE SEWER EXCEPT AS SHOWN ON THE PLANS. HOUSE LATERALS FROM CHIMNEYS SHALL NOT HAVE AN ANGLE OF LESS THAN 45° WITH THE MAIN LINE SEWER. ANY CHANGE IN ALIGNMENT SHALL BE INDICATED IN WRITING BY THE PRIVATE ENGINEER.
  4. THE PRIVATE ENGINEER SHALL FURNISH THE HOUSE LATERAL SLOPE AT THE PROPERTY LINE BELOW THE TOP OF CURB ELEVATION FOR EACH HOUSE LATERAL ON THE GRADE SHEET.
  5. NO REVISIONS SHALL BE MADE IN THESE PLANS WITHOUT THE APPROVAL OF THE COUNTY ENGINEER.
  6. THE CONTRACTOR SHALL NOTIFY THE CONSTRUCTION DIVISION BY TELEPHONE, MANSON 9-4848, EXT. 81881, AT LEAST TWENTY-FOUR HOURS BEFORE STARTING ANY WORK UNDER THE CONTRACT.
  7. MANHOLES SHALL BE BRICK SEWER STRUCTURES PER L.V.M.W.D. PRECAST CONCRETE MANHOLES PER 5.3 OR 5.4, EXCEPT AS NOTED.
  8. USE STANDARD MANHOLE FRAMES AND COVERS, S-15, EXCEPT AS NOTED.
  9. MANHOLE TOPS IN UNIMPROVED RIGHTS-OF-WAY TO BE SIX INCHES ABOVE FINISHED GRADE.
  10. USE STEEL STRUTTING PER ALL PIPE IS STANDARD WITH EXCEPT AS NOTED.
  11. USE MECHANICAL COMPRESSION JOINTS FOR ALL V.C.P. JOINTS PER SPEC. SECT. 34, 36, 40 & 41.
  12. IF A POWER POLE IS WITHIN THREE FEET OF THE SEWER, THE SEWER SHALL BE ENCASED, PER 5.22, TWO FEET ON EACH SIDE FROM THE POINT OF INTERFERENCE.
  13. IF DURING THE COURSE OF CONSTRUCTION IT IS DETERMINED THAT THERE IS LESS THAN FOUR FEET OF COVER OVER THE TOP OF A MAIN LINE OR HOUSE LATERAL T.C.P. SEWER WHICH IS NOT INDICATED ON THE PLANS, THE PIPE SHALL BE ENCASED PER 5.22, UNLESS OTHERWISE APPROVED BY THE COUNTY ENGINEER.
  14. HOUSE LATERALS TO BE CONSTRUCTED WITH INVERTS 4" BELOW FINISHED GRADE AT PROPERTY LINE EXCEPT AS NOTED.
  15. RESURFACE ALL TRENCHES WITHIN PAVED AREAS TO MEET L.A. COUNTY ROAD DEPT. OR CALIFORNIA STATE HIGHWAY REQUIREMENTS IN ACCORDANCE WITH PERMITS.
  16. ALL STATE AND LOCAL TRENCH SAFETY ORDERS WILL BE STRICTLY ENFORCED.
  17. "T" BRANCHES MAY BE USED IN PLACE OF "Y" BRANCHES EXCEPT AS NOTED.
  18. THE CONTRACTOR SHALL OBTAIN GRADE SHEETS FOR TOP OF MANHOLES FROM THE ENGINEER.
  19. SPECIAL BACKFILL IN DESIGNATED AREAS:
    - a. BACKFILL TRENCH AND REPLACE OTHER EARTH REMOVED SO AS TO ACHIEVE THE NATURAL OR FINISH GRADES & SLOPES SHOWN ON THE GRADING PLAN APPROVED FOR THIS TRACT BY THE BUILDING & SAFETY DIVISION.
    - b. ALL BACKFILL AND EARTH REPLACED SHALL BE COMPACTED TO A MINIMUM 90% OF MAXIMUM DENSITY PER A.S.T.M. STANDARD METHOD OF TEST D-1557-57 AS NECESSARY. ACCEPTABLE CERTIFICATION OF SUCH COMPACTION SHALL BE SUBMITTED TO THE CONSTRUCTION DIVISION.
  20. Waterproofing of M.H. noted on the plans shall consist of two coats of emulsified asphalt.

PROFILE, ALIGNMENT AND GRADE OF  
 SANITARY SEWERS PAGE 1

TRACT No 27930. 39892  
 PRIVATE CONTRACT NO. 7919

W.S. 60  
 4 SHEETS, 7 PAGES  
 SCALE: VERT. 1" = 8' AUGUST, 1967  
 HORIZONTAL 1" = 40'  
 PREPARED IN THE OFFICES OF  
 BECHTEL CORPORATION  
 23600 CALABASAS ROAD, CALABASAS-CALIFORNIA.  
 By: A. Standa, Designer  
 A. STANLEY BURNEY, REG. C. E. NO. 14523

FOR LEGEND SEE PLAN (NO. S-1)

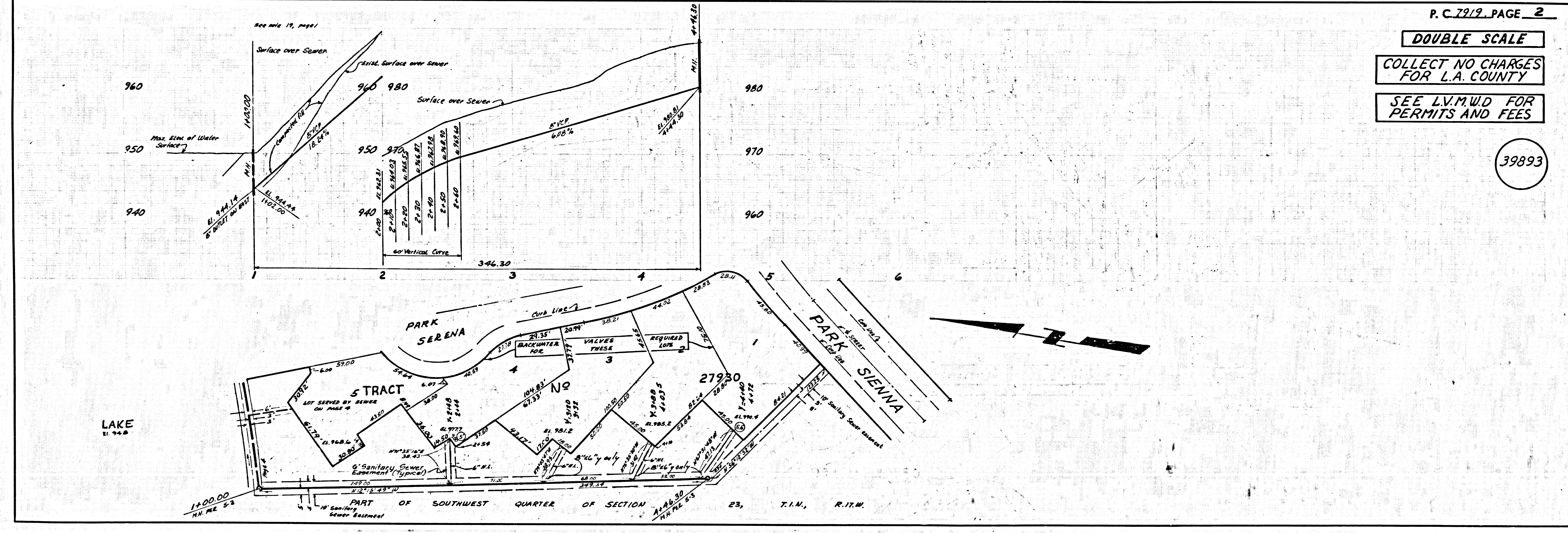
NOTE:  
 GRADES TO WHICH THIS IMPROVEMENT IS TO BE CONSTRUCTED ARE SHOWN ON PLANS AND PROFILES. GRADE POINTS FOR TOP OF CURB, CENTER LINE OF STREETS, OR CENTER LINE OF ALLEYS ARE SHOWN BY CIRCLES ON PROFILES. AT ALL POINTS BETWEEN DESIGNATED POINTS THE GRADE SHALL BE ESTABLISHED SO AS TO CONFORM TO A STRAIGHT LINE DRAWN BETWEEN SAID DESIGNATED POINTS. ELEVATIONS ARE IN FEET ABOVE U.S.C. & G.S. SEA LEVEL DATUM OF 1929. THIS DRAWING AND THE DATA HEREON ARE HEREBY MADE A PART OF THE SPECIFICATIONS. WORK SHALL BE CONSTRUCTED ACCORDING TO STANDARD SPECIFICATIONS DATED 5-22-62 AS RELIEVED ON FILE IN THE OFFICE OF THE COUNTY ENGINEER AND SHALL BE PROSECUTED ONLY IN THE PRESENCE OF THE COUNTY ENGINEER. BEFORE WORK CAN BE STARTED, THE CONTRACTOR MUST OBTAIN A PERMIT TO EXCAVATE IN COUNTY STREETS FROM THE L.A. COUNTY ROAD DEPT., DISTRICT OFFICE NO. 3, AND PAY A FEE TO THE COUNTY ENGINEER, ROOM 300, COUNTY ENGINEERING BUILDING, 126 SOUTH SPRING STREET, LOS ANGELES, CALIFORNIA. REGIONAL OFFICE, SUFFICIENT TO COVER THE COST OF CONSTRUCTION INSPECTION AND RECORD PLANS. APPROVAL OF THIS PLAN BY THE COUNTY OF LOS ANGELES DOES NOT CONSTITUTE A REPRESENTATION AS TO THE ACCURACY OF THE LOCATION OF OR THE EXISTENCE OR NON-EXISTENCE OF ANY UNDERGROUND UTILITY PIPE OR STRUCTURE WITHIN THE LIMITS OF THE PROJECT. THIS NOTE APPLIES TO ALL PAGES. IF WORK IS TO BE DONE IN A STATE HIGHWAY, A PERMIT MUST BE OBTAINED FROM THE STATE OF CALIFORNIA, DIVISION OF HIGHWAYS, 126 SOUTH SPRING STREET, LOS ANGELES, CALIFORNIA.

COUNTY OF LOS ANGELES, CALIFORNIA  
 JOHN A. LAMBIE, COUNTY ENGINEER  
 APPROVED BY: [Signature] REGIONAL ENGINEER  
 APPROVED BY: [Signature] CHIEF ENGINEER

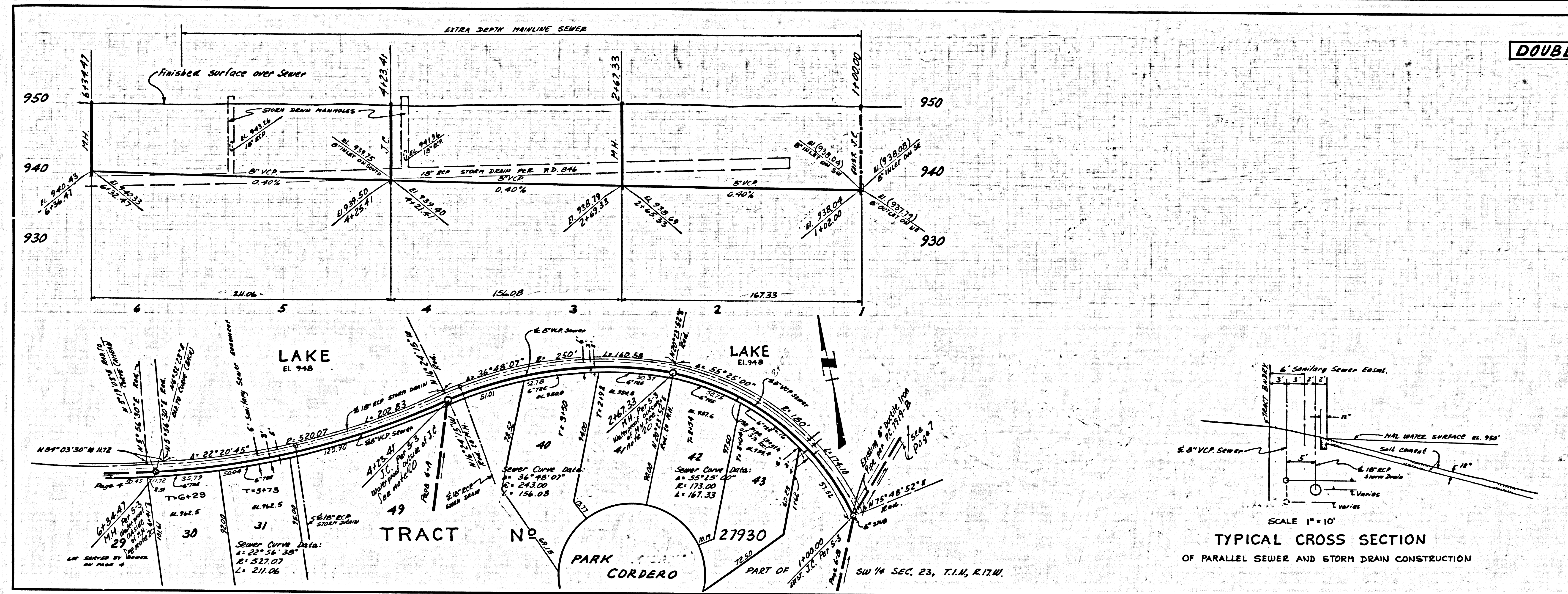
CHECKED BY: [Signature] 1-11-68  
 REG. C.E. NO. 16882

COLLECT CHARGES  
 AS INDICATED  
 Thomas P. Howard

J.N. 0250.02

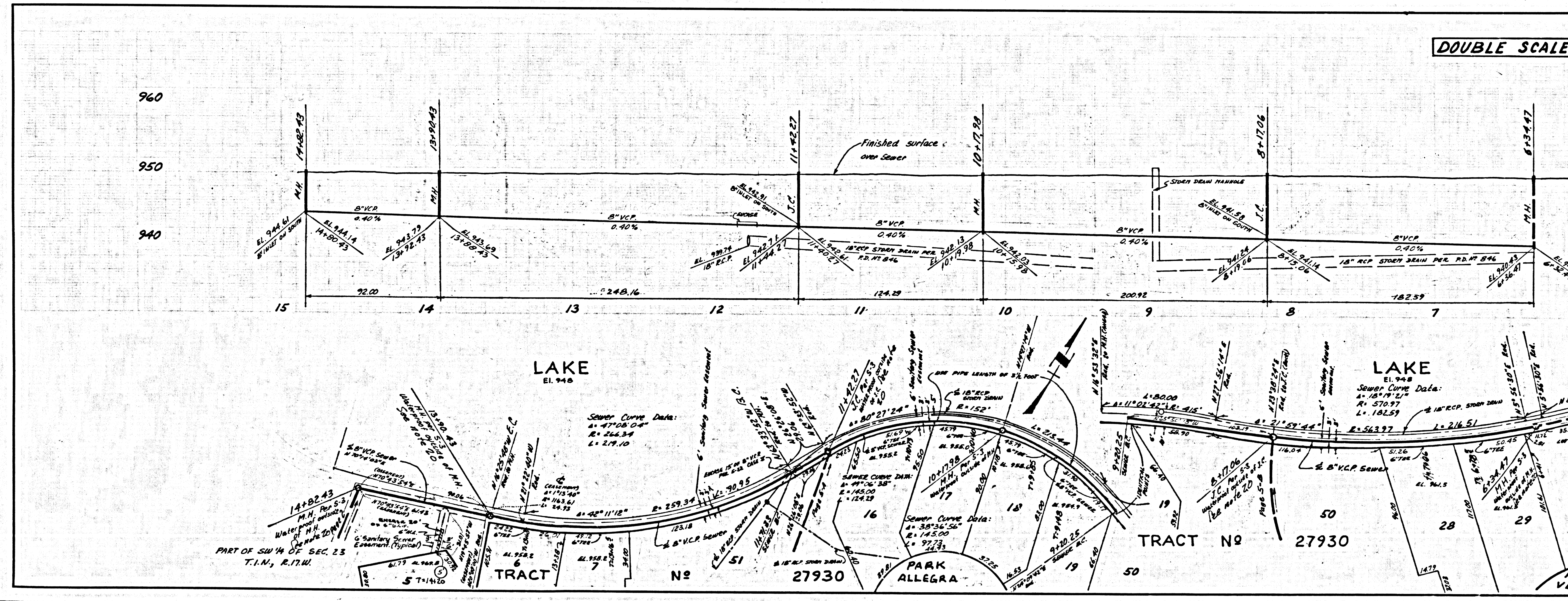


P.C. 7919 PAGE 2  
 DOUBLE SCALE  
 COLLECT NO CHARGES  
 FOR L.A. COUNTY  
 SEE L.V.M.W.D FOR  
 PERMITS AND FEES  
 39893



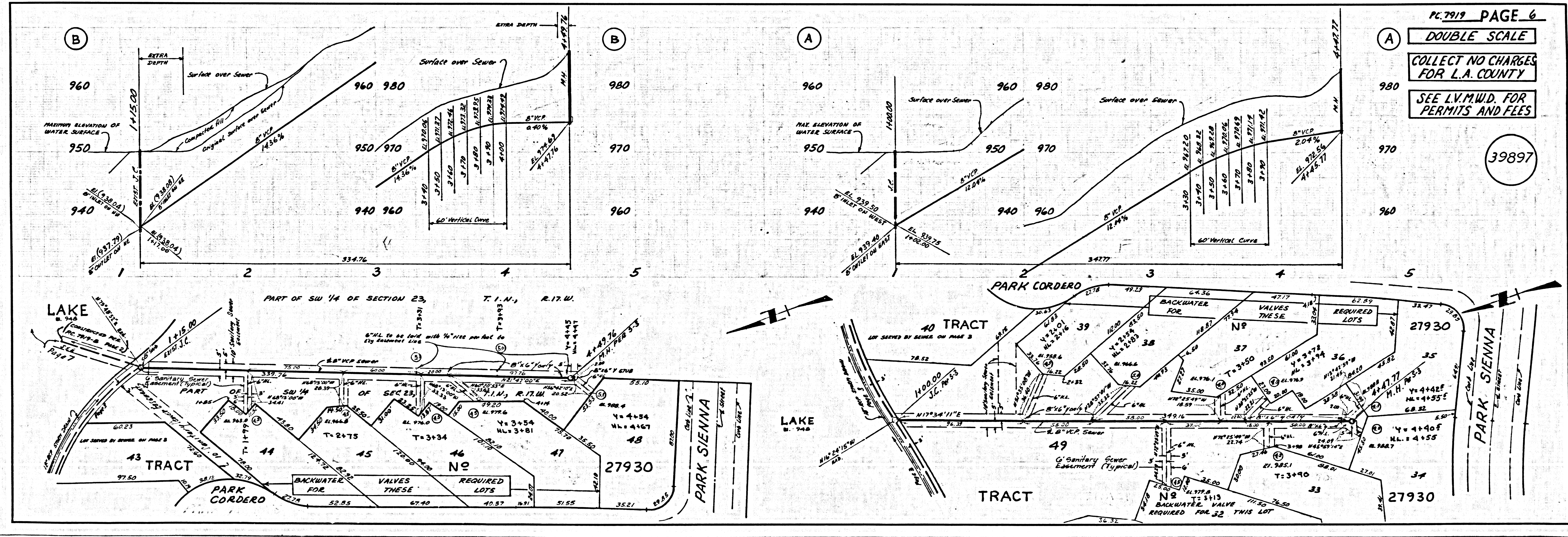
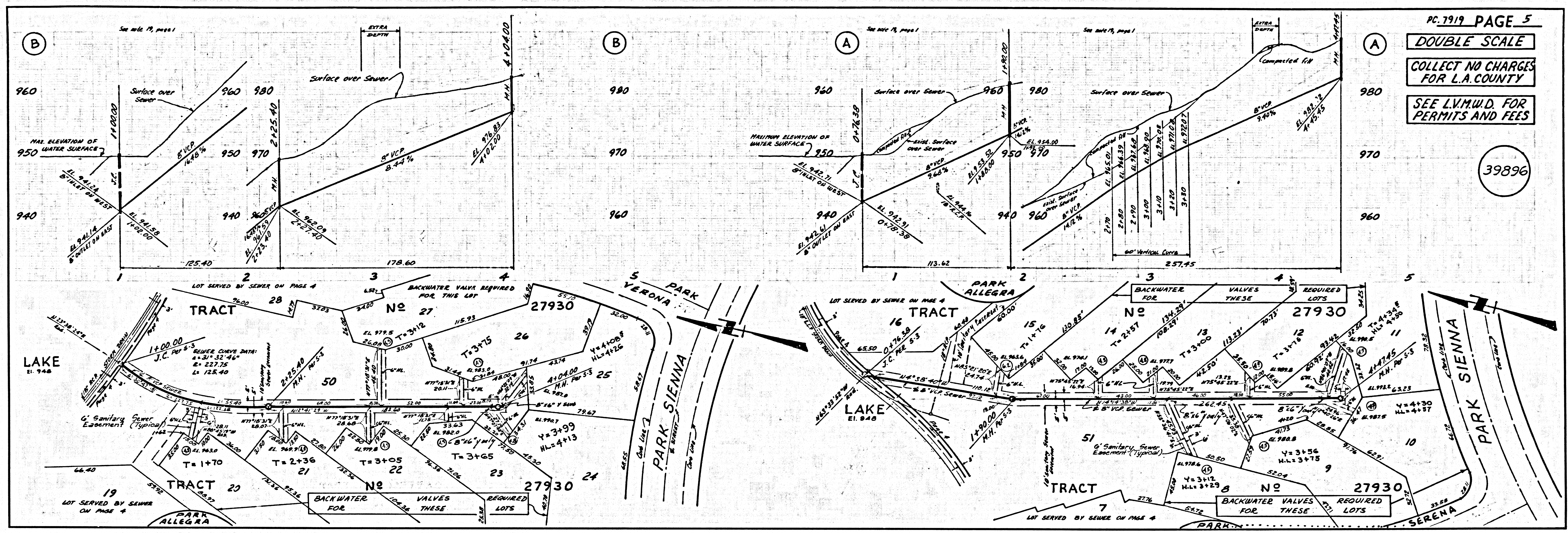
PC. 7919 PAGE 3  
**DOUBLE SCALE**  
 COLLECT NO CHARGES FOR L.A. COUNTY  
 SEE L.V.M.U.D. FOR PERMITS AND FEES

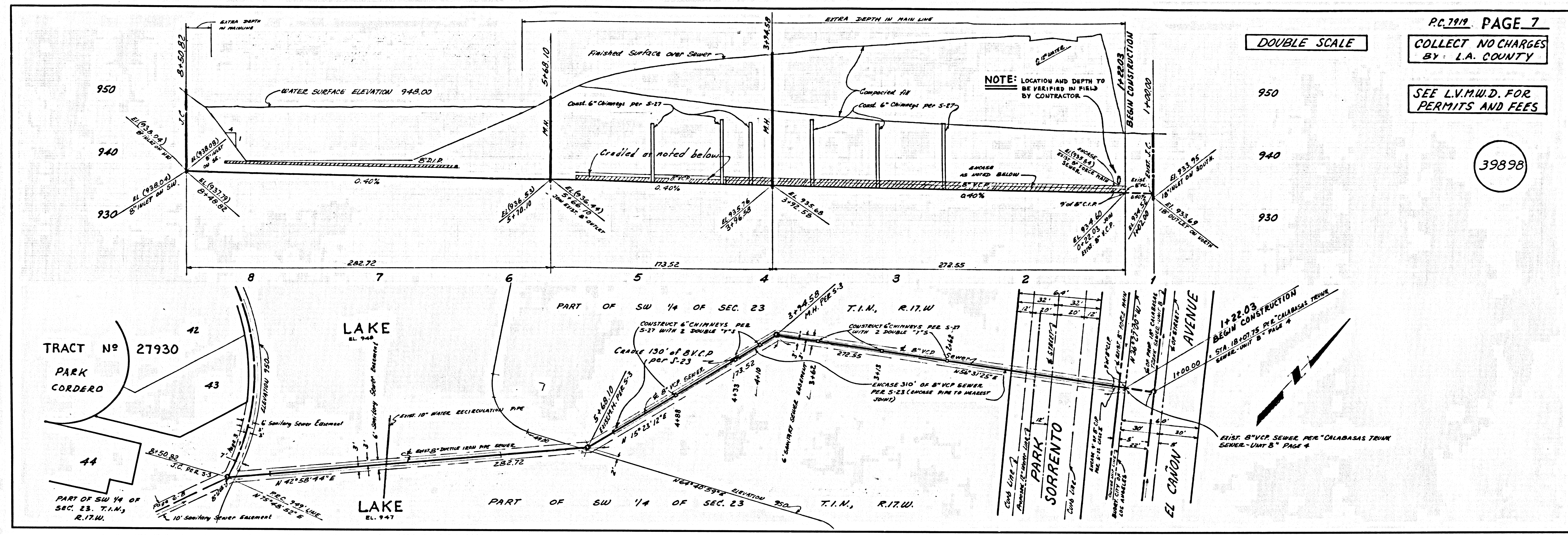
39894



PC. 7919 PAGE 4  
**DOUBLE SCALE**  
 COLLECT NO CHARGES FOR L.A. COUNTY  
 SEE L.V.M.U.D. FOR PERMITS AND FEES

39895





PC 2119 PAGE 7  
 DOUBLE SCALE  
 COLLECT NO CHARGES BY L.A. COUNTY  
 SEE L.V.M.W.D. FOR PERMITS AND FEES

39898

PAGE