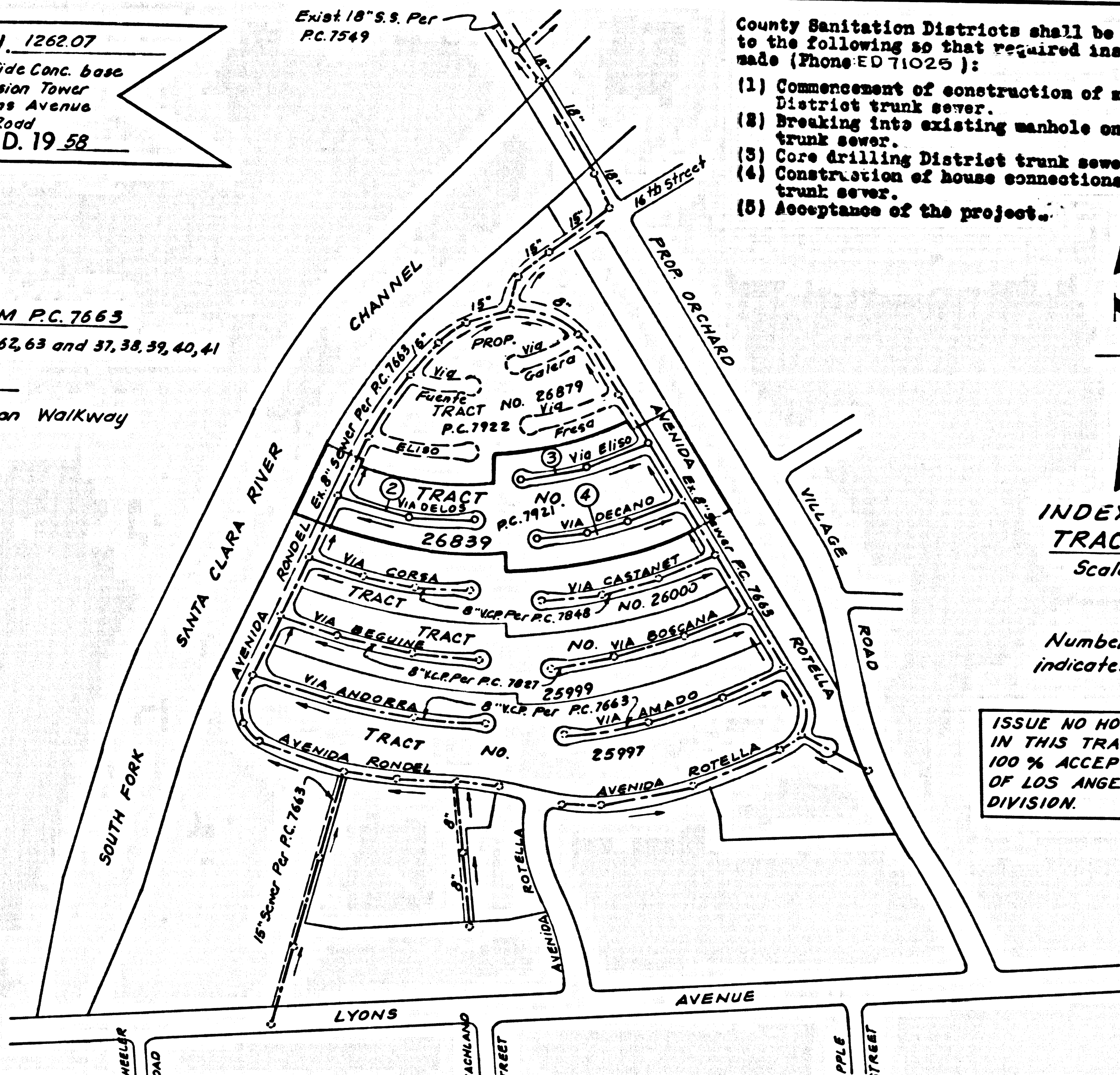


B.M. 5L 642 ELEV. 1262.07
 Road Dept. B.M. Top No. 546 Conc. base
 of NE. Cor. Edison High Tension Tower
 # M-373 W-3-1-35 56 & Lyons Avenue
 and # 30' E. Willy Canyon Road
 NEWHALL QUAD. 19 58

LOTS SERVED FROM P.C. 7663
 Lot Nos. 12, 13, 14, 15, 61, 62, 63 and 37, 38, 39, 40, 41
 LOTS NOT SERVED
 Lot No. 73 Pedestrian Walkway

- County Sanitation Districts shall be notified prior to the following so that required inspection can be made (Phone 510-225-11):
- (1) Commencement of construction of manhole on District trunk sewer.
 - (2) Breaking into existing manhole on District trunk sewer.
 - (3) Core drilling District trunk sewer.
 - (4) Construction of house connections to District trunk sewer.
 - (5) Acceptance of the project.



INDEX MAP
 TRACT 26839
 Scale 1" = 400'

Number in Circles indicates Page Numbers

ISSUE NO HOUSE CONNECTION PERMITS IN THIS TRACT UNTIL RC 7663 IS 100% ACCEPTED BY THE COUNTY OF LOS ANGELES. CALL SANITATION DIVISION.

DOUBLE SCALE
 NEWHALL BLDG. DIST. NO. 82

PROFILE, ALIGNMENT AND GRADE OF
 SANITARY SEWERS PAGE 1
 CONSTRUCTED IN
 TRACT NO. 26839

PRIVATE CONTRACT NO. 7921

W.S. 62-A-3
 2 SHEETS, 4 PAGES

SCALE: VERT. 1" = 8'
 HORIZ. 1" = 40'

JULY, 1967
 PREPARED IN THE OFFICE OF
 VOORHEES-TRINDLE CO.
 5919 VAN NUYS BLVD. VAN NUYS CALIFORNIA
 Michael P. Madson
 REG. C. E. NO. 16742

40286

FOR LEGEND SEE PLAN NO. S-1

- NOTES:
1. PROVIDE STAKES ON THE PROPERTY LINE OR PROPERTY LINES PRODUCED AT RIGHT ANGLES TO THE SEWER LINE AT THE CENTER LINE OF EACH MANHOLE.
 2. NO REPRESENTATIVE OF THE COUNTY ENGINEER WILL SURVEY OR LAY OUT ANY PORTION OF THE WORK.
 3. THE PRIVATE ENGINEER SHALL FURNISH THE COUNTY ENGINEER WITH GRADE SHEETS AND STATIONING FOR ALL HOUSE LATERALS, "T" AND "Y" BRANCHES AND SHALL PROVIDE STAKES FOR THEM AT THEIR PROPER LOCATIONS WITH STATIONING PLAINLY MARKED. ALL HOUSE LATERALS SHALL BE CONSTRUCTED ON A STRAIGHT ALIGNMENT AT RIGHT ANGLES FROM THE MAIN LINE SEWER EXCEPT AS SHOWN ON THE PLANS. HOUSE LATERALS FROM "T" BRANCHES SHALL NOT HAVE AN ANGLE OF LESS THAN 45° WITH THE MAIN LINE SEWER. ANY CHANGE IN ALIGNMENT SHALL BE SECURED IN WRITING BY THE PRIVATE ENGINEER.
 4. THE PRIVATE ENGINEER SHALL FURNISH THE HOUSE LATERAL DEPTH AT THE PROPERTY LINE BELOW THE TOP OF CURB ELEVATION FOR EACH HOUSE LATERAL ON THE GRADE SHEET.
 5. NO REVISIONS SHALL BE MADE IN THESE PLANS WITHOUT THE APPROVAL OF THE COUNTY ENGINEER.
 6. THE CONTRACTOR SHALL NOTIFY THE CONSTRUCTION DIVISION BY TELEPHONE, MADISON 9-622, EXT. 8133, AT LEAST TWENTY-FOUR HOURS BEFORE STARTING ANY WORK UNDER THIS CONTRACT.
 7. MANHOLES SHALL BE BRICK SEWER STRUCTURES PER S-2. PRECAST CONCRETE MANHOLES PER S-3 OR S-4 EXCEPT AS NOTED.
 8. USE STANDARD MANHOLE FRAMES AND COVERS, S-16, EXCEPT AS NOTED.
 9. MANHOLE TOPS IN UNIMPROVED AREAS TO BE SIX INCHES ABOVE FINISHED GRADE.
 10. USE EXTRA STRENGTH PIPE. ALL PIPE IS STANDARD DEPTH EXCEPT AS NOTED.
 11. USE MECHANICAL COMPRESSION JOINTS FOR ALL V.C.P. JOINTS PER SPEC., SECS. 24, 26, 28 & 49.
 12. IF A POWER POLE IS WITHIN THREE FEET OF THE SEWER, THE SEWER SHALL BE ENCASED, PER S-23, TWO FEET ON EACH SIDE FROM THE POINT OF INTERFERENCE.
 13. IF DURING THE COURSE OF CONSTRUCTION IT IS DETERMINED THAT THERE IS LESS THAN FOUR FEET OF COVER OVER THE TOP OF A MAIN LINE OR HOUSE LATERAL V.C.P. SEWER WHICH IS NOT INDICATED ON THE PLANS, THE PIPE SHALL BE ENCASED PER S-23, UNLESS OTHERWISE APPROVED BY THE COUNTY ENGINEER.
 14. HOUSE LATERALS TO BE CONSTRUCTED WITH INVERTS AT PROPERTY LINE 6 FEET BELOW CURB GRADE EXCEPT AS NOTED.
 15. RESURFACE ALL TRENCHES WITHIN PAVED AREAS TO MEET L.A. COUNTY ROAD DEPT. OR CALIFORNIA STATE HIGHWAY REQUIREMENTS IN ACCORDANCE WITH PERMITS.
 16. FOR ALLOWABLE LEAKAGE TEST USE FORMULA NO. 2, SPEC. L, SEC. 54.
 17. ALL STATE AND LOCAL TRENCH SAFETY ORDERS WILL BE STRICTLY ENFORCED.

"T" BRANCHES MAY BE USED INSTEAD OF "Y" BRANCHES IN ALL LOCATIONS EXCEPT AS NOTED.

NO CONNECTIONS FOR THE DISPOSAL OF INDUSTRIAL WASTES SHALL BE MADE TO SEWERS SHOWN ON THESE DRAWINGS WITHOUT WRITTEN PERMISSION FROM THE CHIEF ENGINEER AND GENERAL MANAGER OF THE COUNTY SANITATION DISTRICTS.

NOTICE TO CONTRACTOR
 The existence and location of any underground utility pipes or structures shown on these plans to the best of my knowledge there are no existing utilities except as shown on these plans. The contractor is required to take due precautionary measures to protect the utility lines shown and any other lines not shown or not shown on these plans.

COLLECT CHARGES AS INDICATED
 Thomas S. Howard
 S.E. 12-67

Michael P. Madson
 S.E. 16742

GRADES TO WHICH THIS IMPROVEMENT IS TO BE CONSTRUCTED ARE SHOWN ON PLANS AND PROFILE. GRADE POINTS FOR TOP OF CURBS, CENTER LINE OF STREETS, OR CENTER LINE OF ALLEYS ARE SHOWN BY CIRCLES ON PROFILE. AT ALL POINTS BETWEEN DESIGNATED GRADES THE GRADE SHALL BE ESTABLISHED SO AS TO CONFORM TO A STRAIGHT LINE ON PROFILE. ALL POINTS BETWEEN DESIGNATED GRADES ARE IN FEET ABOVE U.S.C. & G.S. SEA LEVEL DATUM OF 1929.

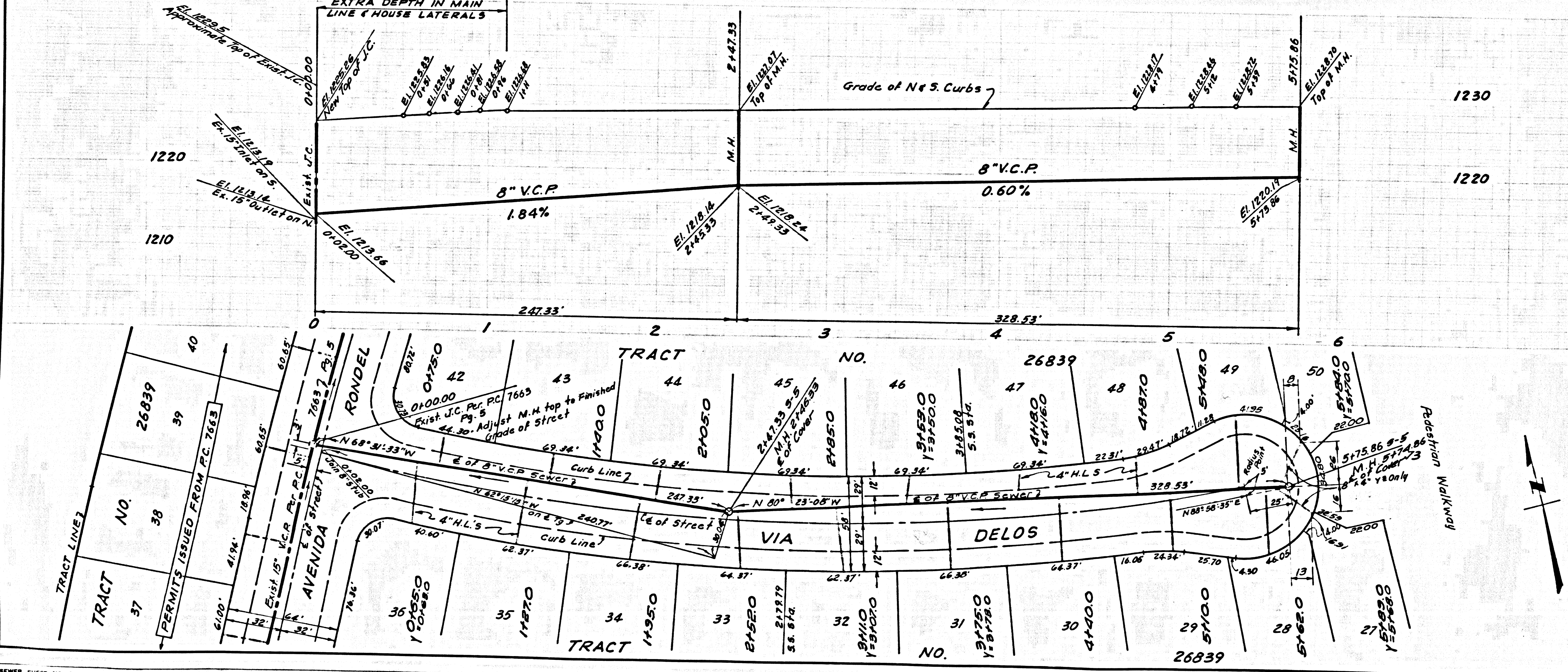
THIS DRAWING AND THE DATA HEREON ARE HEREBY MADE A PART OF THE SPECIFICATIONS. AS REVISED BY THE COUNTY ENGINEER AND SHALL BE PROSECUTED ONLY IN THE PRESENCE OF THE COUNTY ENGINEER. NO WORK SHALL BE STARTED UNLESS THE CONTRACTOR OBTAINS A PERMIT TO EXCAVATE IN COUNTY STREETS FROM THE L.A. COUNTY ROAD DEPT., DISTRICT OFFICE NO. 1, 1200 W. 12TH ST., LOS ANGELES, CALIF. COUNTY ENGINEERING DIVISION, 120 SOUTH SPRING STREET, LOS ANGELES, CALIF. APPROVAL OF THIS PLAN BY THE COUNTY OF LOS ANGELES DOES NOT CONSTITUTE A REPRESENTATION AS TO THE ACCURACY OF THE LOCATION OR OF THE EXISTENCE OR NON-EXISTENCE OF ANY UNDERGROUND UTILITY PIPE, OR STRUCTURE WITHIN THE LIMITS OF THE PROJECT. THIS NOTE APPLIES TO ALL PAGES.

IF WORK IS TO BE DONE IN A STATE HIGHWAY, A PERMIT MUST BE OBTAINED FROM THE STATE OF CALIFORNIA, DIVISION OF HIGHWAYS, 120 SOUTH SPRING STREET, LOS ANGELES, CALIFORNIA.

COUNTY OF LOS ANGELES, CALIFORNIA
 JOHN A. LAMBIE, COUNTY ENGINEER
 J. D. PARKHURST, CHIEF ENGINEER
 CO. SAN. DIST. NO. 82
 APPROVED BY: *Smith Tolman* 7/20/67
 APPROVED BY: *Michael P. Madson*
 GENERAL MANAGER OFFICE ENGINEER

CHECKED BY: *M. Decker* 8-20-67
 REG. C.E. NO. 3416

J.N. 0250.02



P.C. 7921 PAGE 2

NO CHARGE FOR CONNECTIONS

DOUBLE SCALE

40287

