

B.M. BY 2788 ELEV. 115.916
 1/2" = 1' CORNER OF S.E. COR. VALLEY VIEW AVE. & IMPERIAL HWY. 76 FT ± S & 58 FT ± E. & INT.
 LA MIRADA QUAD. 19.65

ENGINEER'S NOTICE TO CONTRACTORS
 The existence or location of any underground utility pipes or structures shown on these plans are obtained by a search of the available records. To the best of my knowledge there are no existing utilities except as shown on these plans. The Contractor is required to take due precautionary measures to protect the utility lines shown and any other lines not of record or not shown hereon.
 Date 10-19-67
 R.C.E. 15429

LA MIRADA BLDG. DIST. NO. 4.08

PROFILE, ALIGNMENT AND GRADE OF
SANITARY SEWERS P.C. 7927
 TO BE CONSTRUCTED IN
IMPERIAL HIGHWAY PAGE 1

PRIVATE CONTRACT NO. 7927

W.S. 34
 1 SHEET, 2 PAGES

SCALE: HORIZ. 1" = 40'
 VERT. 1" = 4'

DATE: JUNE, 1967
 PREPARED BY THE OFFICES OF
H.M. SCOTT & ASSOCIATES, INC.
 CIVIL ENGINEERING - PLANNING - SURVEYING
 9143 E. VALLEY BLVD. ROSEMEAD, CALIF.
 REG. C. E. NO. 15429

40574

FOR LEGEND SEE PLAN NO. S-1

NOTE:
 GRADES TO WHICH THIS IMPROVEMENT IS TO BE CONSTRUCTED ARE SHOWN ON PLANS AND PROFILE. GRADE POINTS FOR TOP OF CURBS, CENTER LINE OF STREETS, OR CENTER LINE OF ALLEYS ARE SHOWN BY CIRCLES ON PROFILES. AT ALL POINTS BETWEEN DESIGNATED GRADE POINTS THE GRADE SHALL BE ESTABLISHED AS TO CONFORM TO A STRAIGHT LINE BENEATH SET WORK AND DESIGNATED POINTS. THIS DRAWING AND THE DATA HEREON ARE HEREBY MADE A PART OF THE SPECIFICATIONS.
 THE OFFICE OF THE CITY ENGINEER AND SHALL BE PROSECUTED ONLY IN THE PRESENCE OF THE CITY ENGINEER OR FILE IN THE OFFICE OF THE CITY ENGINEER AND SHALL BE PROSECUTED ONLY IN THE PRESENCE OF THE CITY ENGINEER FROM THE L.A. COUNTY ROAD DIST. DISTRICT OFFICE NO. 4, AND MAKE A DEPOSIT WITH THE CITY OF LA MIRADA, 1000 LA MIRADA BLVD., LA MIRADA, CALIF. SUFFICIENT TO COVER THE COST OF CONSTRUCTION INSPECTION AND RECORD PLANS.
 APPROVAL OF THE PLAN BY THE CITY OF LA MIRADA DOES NOT CONSTITUTE A REPRESENTATION AS TO THE ACCURACY OF THE LOCATION OR OF THE EXISTENCE OR NON-EXISTENCE OF ANY UNDERGROUND UTILITY PIPE, OR STRUCTURE WITHIN THE LIMITS OF THE PROJECT. THIS NOTE APPLIES TO ALL LOTS.
 IF WORK IS TO BE DONE IN A STATE HIGHWAY, A PERMIT MUST BE OBTAINED FROM THE STATE OF CALIFORNIA, DIVISION OF HIGHWAYS, 120 SOUTH SPRING STREET, LOS ANGELES, CALIFORNIA.

CITY OF LA MIRADA, CALIFORNIA
 JOHN A. LAMBIE, CITY ENGINEER
 J. D. PARKHURST, CHIEF ENGINEER
 APPROVED BY: [Signature] OFFICE ENGINEER

CHECKED BY: [Signature] 12/20/67
 REG. C. E. NO. 15429

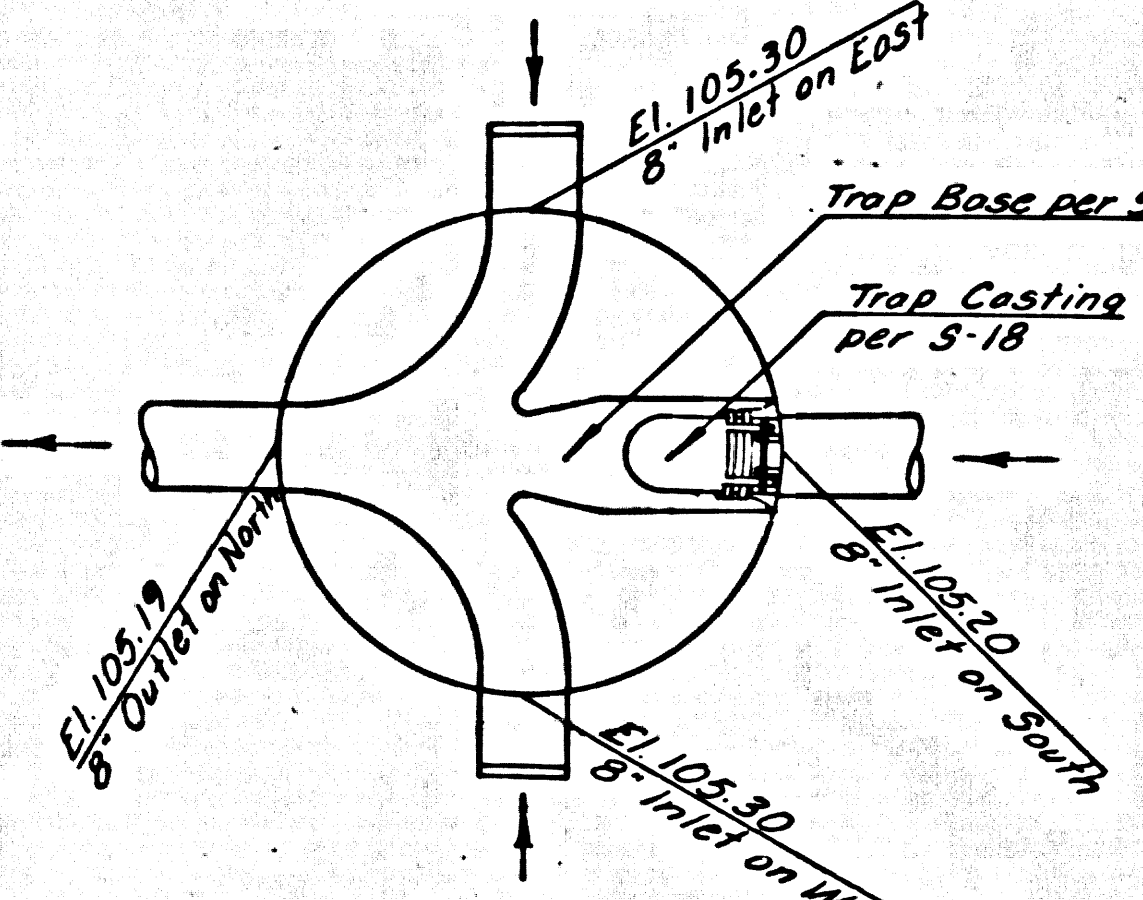
- NOTES:**
- PROVIDE STAKES ON THE PROPERTY LINE OR PROPERTY LINES PRODUCED AT RIGHT ANGLES TO THE SEWER LINE AT THE CENTER LINE OF EACH MANHOLE.
 - NO REPRESENTATIVE OF THE CITY ENGINEER WILL SURVEY OR LAY OUT ANY PORTION OF THE WORK.
 - THE PRIVATE ENGINEER SHALL FURNISH THE CITY ENGINEER WITH GRADE SHEETS AND STATIONING FOR ALL HOUSE OUTLETS, SANITARY TRUNKS AND BRANCHES FOR THEM AT THEIR PROPER LOCATIONS WITH STATIONING PLAINLY MARKED. THE HOUSE LATERALS SHALL BE CONSTRUCTED IN ACCORDANCE WITH THE STANDARD SPECIFICATIONS FOR SANITARY SEWERS AS SHOWN ON THE DRAWING. THE STANDARD SPECIFICATIONS SHALL BE USED UNLESS OTHERWISE SPECIFIED. ANY CHANGE IN ALIGNMENT SHALL BE REQUESTED IN WRITING BY THE PRIVATE ENGINEER.
 - THE PRIVATE ENGINEER SHALL FURNISH THE HOUSE LATERAL DEPTH AT THE SUBJECT LAND GRABER THE TOP OF EACH MANHOLE FOR EACH HOUSE LATERAL ON THE GRADE SHEET.
 - NO REVISIONS SHALL BE MADE IN THESE PLANS WITHOUT THE APPROVAL OF THE CITY ENGINEER.
 - THE CONTRACTOR SHALL NOTIFY THE CONSTRUCTION DIVISION BY TELEPHONE, MADISON 9-07, EXT. 8152, AT LEAST TWENTY-FOUR HOURS BEFORE STARTING ANY WORK UNDER THIS CONTRACT.
 - MANHOLES SHALL BE BRICK SEWER STRUCTURES PER S-3.
 - USE STANDARD MANHOLE FRAMES AND COVERS, S-1, EXCEPT AS NOTED.
 - MANHOLE TOPS IN UNIMPROVED RIGHTS-OF-WAY TO BE FLUSH WITH FINISHED GRADE.
 - USE EXTRA STRENGTH PIPE. ALL PIPE IS STANDARD DEPTH EXCEPT AS NOTED.
 - USE MECHANICAL COMPRESSION JOINTS FOR ALL V.C.P. JOINTS PER SPEC., SECS. 36, 48 & 49.
 - IF A POWER POLE IS WITHIN THREE FEET OF THE SEWER, THE SEWER SHALL BE ENCASED, PER S-22, TWO FEET ON EACH SIDE FROM THE POINT OF INTERFERENCE.
 - IF DURING THE COURSE OF CONSTRUCTION IT IS DETERMINED THAT THERE IS LESS THAN FOUR FEET OF COVER OVER THE TOP OF A MAIN LINE OR HOUSE LATERAL V.C.P. SEWER WHICH IS NOT INDICATED ON THE PLANS, THE PIPE SHALL BE ENCASED PER S-22, UNLESS OTHERWISE APPROVED BY THE CITY ENGINEER.
 - ALL G.L.P.'S SHALL BE CLEAR 180 OR BETTER.
 - RESURFACE ALL TRENCHES WITHIN PAVED AREAS TO MEET L.A. COUNTY ROAD DEPT. OR CALIFORNIA STATE HIGHWAY REQUIREMENTS IN ACCORDANCE WITH PERMITS.
 - FOR ALLOWABLE LEAKAGE TEST USE FORMULA NO. 2, SPEC. 1, SEC. 54.
 - ALL STATE AND LOCAL TRENCH SAFETY ORDERS WILL BE STRICTLY ENFORCED.
 - ALL JOINTS BETWEEN C.I.P. & V.C.P. SHALL BE MADE WITH A RUBBER GROMMET (WITH HOOP IF NECESSARY) JOINTS PER SPECIFICATIONS SECTION 18, OR APPROVED EQUAL.
 - ALL C.I.P. JOINTS SHALL BE OF THE TYTON TYPE OR APPROVED EQUAL PER SPECIFICATIONS SECTION 24.

- County Sanitation Districts shall be notified prior to the following as that required inspection can be made (Phone: 630-3097)**
- Commencement of construction of manhole on District trunk sewer.
 - Breaking into existing manhole on District trunk sewer.
 - Cove drilling District trunk sewer.
 - Construction of house connections to District trunk sewer.
 - Acceptance of the project.

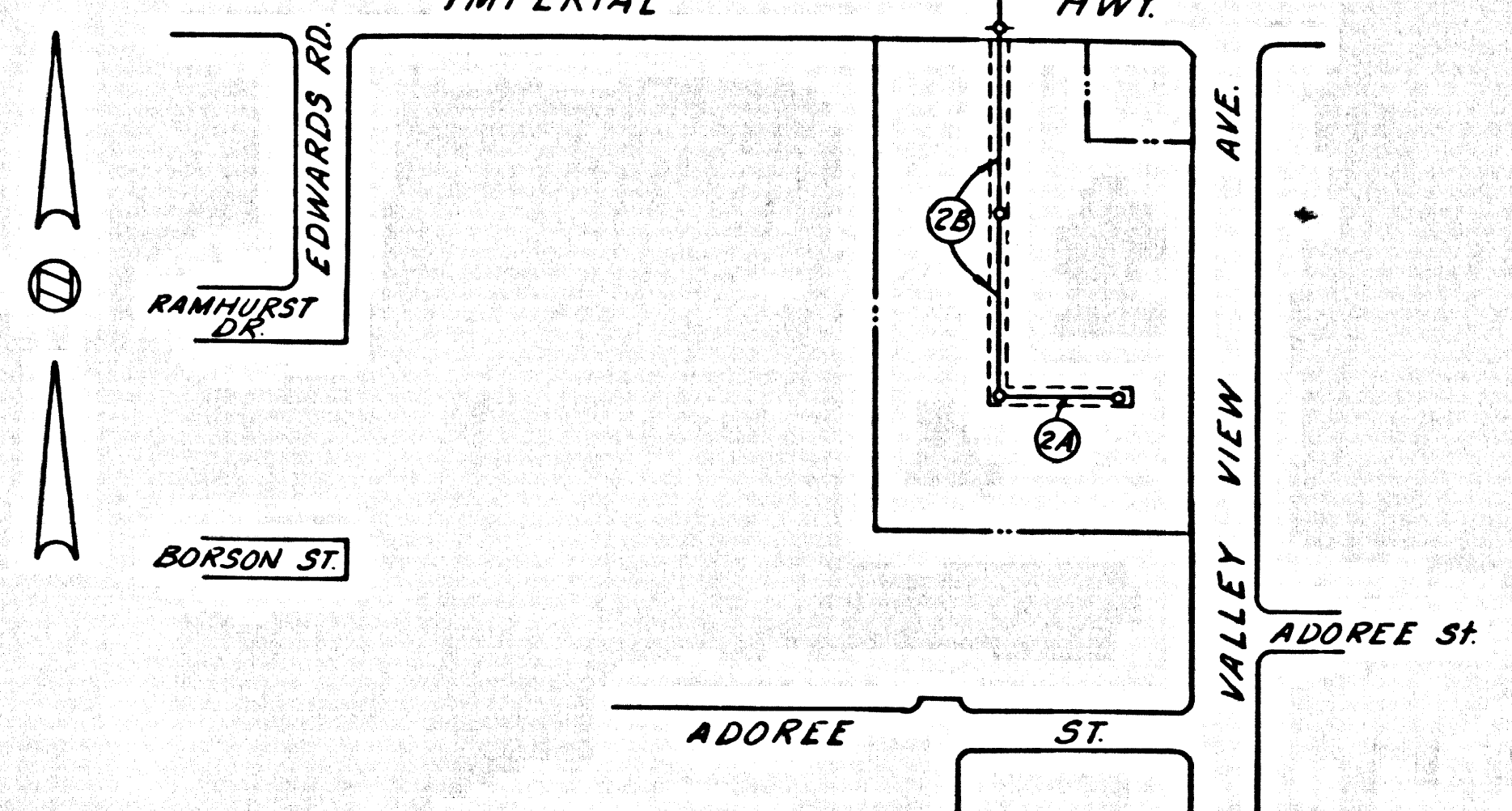
COLLECT CHARGES AS INDICATED
 Reason A. Flores 11/22/67

REVIEWED: [Signature]
 INDUSTRIAL WASTE DIVISION

DETAIL SPECIAL MANHOLE AT STATION 1+70.00 PAGE 2B
 No Scale



Construct trap section per S-10 for inlet from South and install trap per S-18. Construct normal channels per S-3 for inlets from East and West.



PC 7927 IMPERIAL HIGHWAY INDEX MAP
 SCALE 1" = 300'

NO CONNECTIONS FOR THE DISPOSAL OF INDUSTRIAL WASTES SHALL BE MADE TO SEWERS SHOWN ON THESE DRAWINGS WITHOUT WRITTEN PERMISSION FROM THE CHIEF ENGINEER AND GENERAL MANAGER OF THE COUNTY SANITATION DISTRICTS.

NOTE:
 The Contractor is to notify Mr. Christiansen of the Metropolitan Water District at 626-4282 at least 48 hours prior to any work near the M.W.D.'s facilities

Do not issue Connection Permits until Sewer R/W has been dedicated.

