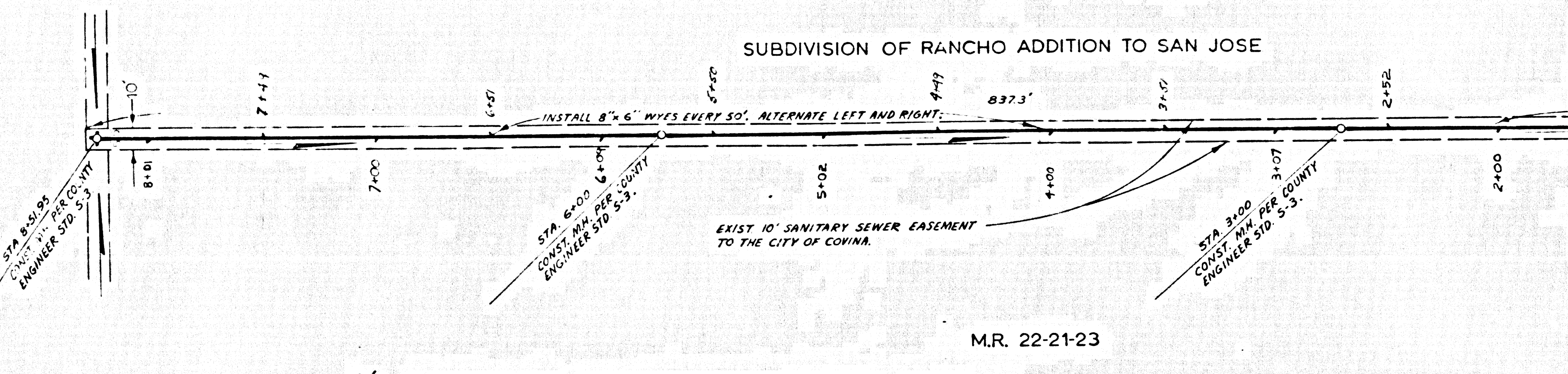


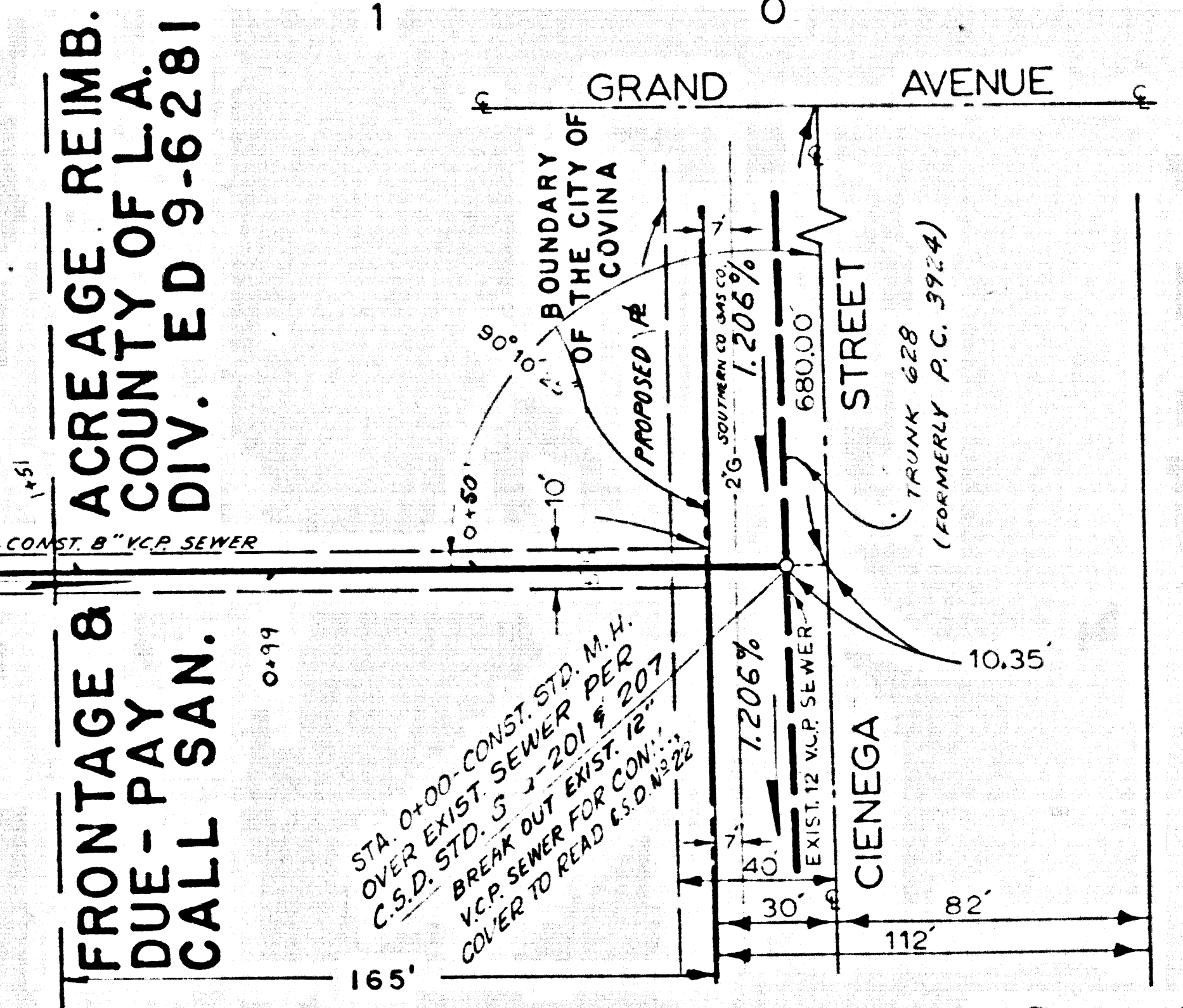
- GENERAL NOTES
1. All work to be done in accordance with standards and specifications of the City of Los Angeles on file to the Engineering Division Office.
 2. The contractor shall be responsible for the safety of the contractor, his workers, his utilities of every nature, whether above or below ground and shall protect them from damage. The contractor shall bear the cost expense of re-connections and replacement of said utilities damaged by operations in connection with the prosecution of work.
 3. Manholes shall be brick sewer structures per S-3. Precast concrete manholes per S-5 or S-6 may be used as an alternate in locations approved by the city engineer.
 4. Use L.A. County Std. M.H. frame and cover per S-15.
 5. Before breaking into any exist. structure and before final acceptance of this work, the Los Angeles County Sanitation District, (D24-126), shall be notified in order that the required inspection can be made.
 6. Use mechanical compression joints for all vitrified clay pipe per Sections 36 and 48.
 7. The private engineer shall furnish the city with stationing for all "M" structures.
 8. The contractor shall notify the engineering division by telephone, area code 213-331-0111, Ext. 265, at least 24 hours before starting any work under this contract.
 9. No revisions shall be made on this plan without the approval of the City Engineer.
 10. For allowable leakage test use Formula No. 2, Spec. Sec. 48.
 11. All State and local trench safety orders will be strictly enforced.
 12. **DO NOT REMOVE THIS PLAN FROM THE PROJECT OFFICE. IT IS TO BE KEPT ON FILE IN THE PROJECT OFFICE.**

*ACREAGE REIMBURSEMENT DUE
PAY COUNTY OF L.A.; CALL SAN. DIV. - ED 9-6281

* ALL TRIBUTARY AREA IS REQUIRED TO PAY REIMBURSEMENT TO COUNTY OF L.A.; CALL SAN. DIV. ED 9-6281



* ACREAGE REIMBURSEMENT DUE
PAY COUNTY OF L.A.; CALL SAN. DIV. - ED 9-6281



39506

AS BUILT
Julie A. Turner 1-10-68
CONSTRUCTION INSPECTOR

PRIVATE CONTRACT No. 7938

CITY OF COVINA
SEWER PLAN AND PROFILE
CIENEQA STREET
STA. 0+00 TO STA. 8+19.5

Date	MAR. 10, 67	SUBMITTED	Sheet Number
Scale	1"=40'	DATE	1 of 1
Design	N.B.	APPROVED	Project Number
Drawn	N.B.	DATE	S-6509
Checked			

REFERENCE P.C. NO. 7938
JOHN A. LAMBIE COUNTY ENGINEER

APPROVED BY: *[Signature]*
SAN DIMAS REGIONAL ENGINEER

APPROVED ON: JULY 24 1967 BY
[Signature]
FOR JOHN PARKHURST CHIEF ENGINEER
LOS ANGELES COUNTY SANITATION DISTRICT NO. 22

PREPARED BY:
H. CLIFFORD THORN & ASSOCIATES
CIVIL ENGINEERS & LAND SURVEYORS
502 W. ALOSTA AVE. GLENORA, CALIFORNIA EDGEWOOD 5-0507

REVISION
* 9-1-67 ADDED NOTES C.R.