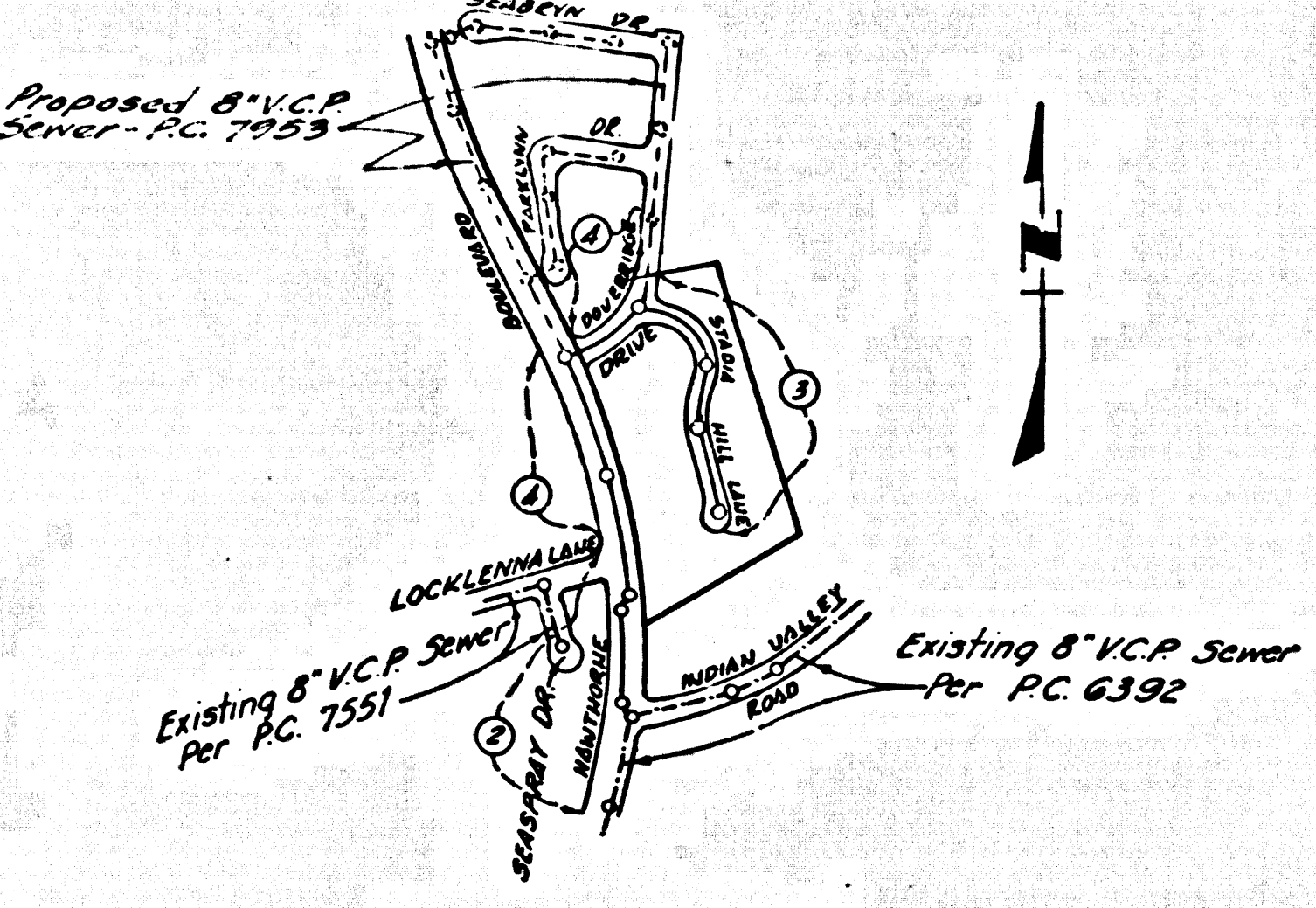


B.M. BY 4384 ELEV. 1009.234  
 CURB 54, E. EDGE CATCH BASIN 9 FT. 1.56  
 U. EDGE 44 FT. E. CL. HAWTHORNE BLVD.  
 0.65 MI. S. U. CREST ROAD.  
 PALOS VERDES QUAD, 1965



**INDEX MAP**  
 TRACT NO 27991  
 P.C. 7939  
 SCALE: 1" = 600'  
 NOTE: NUMBERS IN CIRCLES INDICATE PAGE NUMBERS.

DATE	REVISIONS
3-8-68	REVISED SURFACE OVER SEWER FROM STA. 3+00.00 TO STA. 8+16.21 - P. 3
	REG. C.E. NO. 10655

**DOUBLE SCALE**  
**LOMITA BLDG. DIST. NO. 12**

PROFILE ALIGNMENT AND GRADE OF  
**P.C. 7939**  
**SANITARY SEWERS** PAGE 1  
 TO BE CONSTRUCTED IN

**TRACT NO 27991**  
**PRIVATE CONTRACT NO. 7939**

W.S. 27  
 2 SHEETS, 4 PAGES  
 SCALE: VERT. 1" = 8'  
 HORIZ. 1" = 40' SEPT, 1967

PREPARED IN THE OFFICES OF  
**JENNINGS ENGINEERING COMPANY**  
 100 S. BEVERLY DRIVE, LOS ANGELES, CALIFORNIA.  
 BY: *J. Jennings*  
 REG. C.E. NO. 7858

FOR LEGEND SEE PLAN NO. S-64

NOTE:  
 GRADES TO WHICH THIS IMPROVEMENT IS TO BE CONSTRUCTED ARE SHOWN ON PLANS AND PROFILES. GRADE POINTS FOR TOP OF CURBS, CENTER LINE OF STREETS, OR CENTER LINE OF ALLEYS ARE SHOWN BY CIRCLES ON PROFILES. AT ALL POINTS BETWEEN DESIGNATED ELEVATIONS ARE IN FEET ABOVE U.S.C. & G.S. SEA LEVEL DATUM OF 1929.  
 THIS DRAWING AND THE DATA HEREON ARE HEREBY MADE A PART OF THE SPECIFICATIONS. (AS REVISED)  
 BEFORE WORK CAN BE STARTED, THE CONTRACTOR MUST OBTAIN A PERMIT TO EXCAVATE IN COUNTY STREETS FROM THE L.A. COUNTY ROAD DEPT., DISTRICT OFFICE NO. 10, 100 S. BEVERLY DRIVE, LOS ANGELES, CALIFORNIA. ROOM 303, COUNTY ENGINEERING BUILDING, 100 WEST EXHIBIT STREET, LOS ANGELES, CALIFORNIA. A FEE TO THE COUNTY ENGINEER, ROOM 303, COUNTY ENGINEERING BUILDING, 100 WEST EXHIBIT STREET, LOS ANGELES, CALIFORNIA, SHALL BE PAID TO COVER THE COST OF CONSTRUCTION INSPECTION AND RECORD PLANS.  
 APPROVAL OF THIS PLAN BY THE COUNTY OF LOS ANGELES DOES NOT CONSTITUTE A REPRESENTATION AS TO THE ACCURACY OF THE LOCATION OF OR THE EXISTENCE OR NON-EXISTENCE OF ANY UNDERGROUND UTILITY PIPE, OR STRUCTURE WITHIN THE LIMITS OF THE PROJECT. THIS NOTE APPLIES TO ALL PAGES.  
 IF WORK IS TO BE DONE IN A STATE HIGHWAY, A PERMIT MUST BE OBTAINED FROM THE STATE OF CALIFORNIA, DIVISION OF HIGHWAY, 120 SOUTH BRIDGE STREET, LOS ANGELES, CALIFORNIA.

- NOTES:
- PROVIDE STAKES ON THE PROPERTY LINE OR PROPERTY LINES PRODUCED AT RIGHT ANGLES TO THE SEWER LINE AT THE CENTER LINE OF EACH MANHOLE.
  - NO REPRESENTATIVE OF THE COUNTY ENGINEER WILL SURVEY OR LAY OUT ANY PORTION OF THE WORK.
  - THE PRIVATE ENGINEER SHALL FURNISH THE COUNTY ENGINEER WITH GRADE SHEETS AND STATIONING FOR ALL HOUSE LATERALS AND "Y" BRANCHES AND SHALL PROVIDE SEASERS FOR THEM AT THEIR PROPER LOCATIONS WITH STATIONING PLAINLY MARKED. ALL HOUSE LATERALS SHALL BE CONSTRUCTED IN A STRAIGHT ALIGNMENT AT RIGHT ANGLES FROM THE MAIN LINE SEWER EXCEPT AS SHOWN ON THE PLANS. HOUSE LATERALS FROM CHIMNEYS SHALL NOT HAVE AN ANGLE OF LESS THAN 45° WITH THE MAIN LINE SEWER. ANY CHANGE IN ALIGNMENT SHALL BE REQUESTED BY WRITING BY THE PRIVATE ENGINEER.
  - THE PRIVATE ENGINEER SHALL FURNISH THE HOUSE LATERAL DEPTH AT THE PROPERTY LINE BELOW THE TOP OF CURB ELEVATION FOR EACH HOUSE LATERAL ON THE GRADE SHEET.
  - NO REVISIONS SHALL BE MADE IN THESE PLANS WITHOUT THE APPROVAL OF THE COUNTY ENGINEER.
  - THE CONTRACTOR SHALL NOTIFY THE CONSTRUCTION DIVISION BY TELEPHONE, MADISON 9-4747, EXT. 8128, AT LEAST TWENTY-FOUR HOURS BEFORE STARTING ANY WORK UNDER THIS CONTRACT.
  - ALL STRUCTURES SHALL BE EITHER BRICK MANHOLES PER S-23 OR PRECAST CONCRETE MANHOLES PER S-5 OR S-6 EXCEPT AS NOTED.
  - USE STANDARD MANHOLE FRAMES AND COVERS, S-16 EXCEPT AS NOTED.
  - MANHOLE TOPS IN UNIMPROVED AREAS OF WAYS TO BE SEE HEREON ABOVE FINISHED GRADE.
  - USE EXTRA STRENGTH PIPE. ALL PIPE IS STANDARD DEPTH EXCEPT AS NOTED.
  - USE MECHANICAL COMPRESSION JOINTS FOR ALL V.C.P. JOINTS PER SPEC. SECT. 24 - 45, 4-49 EXCEPT AS NOTED.
  - "Y" OR "Y" BRANCHES MAY BE USED FOR CONNECTIONS TO MAIN LINE SEWERS EXCEPT AS NOTED.
  - IF A POWER POLE IS WITHIN THREE FEET OF THE SEWER, THE SEWER SHALL BE ENCASED, PER S-23, TWO FEET ON SIDE FROM THE POINT OF INTERFERENCE.
  - IF DURING THE COURSE OF CONSTRUCTION IT IS DETERMINED THAT THERE IS LESS THAN FOUR FEET OF COVER OVER THE TOP OF A MAIN LINE OR HOUSE LATERAL V.C.P. SEWER WHICH IS NOT INDICATED ON THE PLANS, THE PIPE SHALL BE ENCASED PER S-23 CASE 3B, UNLESS OTHERWISE APPROVED BY THE COUNTY ENGINEER.
  - HOUSE LATERALS TO BE CONSTRUCTED WITH INVERTS AT PROPERTY LINE... FEET BELOW CURB GRADE EXCEPT AS NOTED.
  - REINFORCE ALL TRENCHES WITHIN PAVED AREAS TO MEET L.A. COUNTY ROAD DEPT. OR CALIFORNIA STATE HIGHWAY REQUIREMENTS IN ACCORDANCE WITH PERMITS.
  - FOR ALLOWABLE GRADE TEST USE FORMULA NO. 1, SPEC. SEC. 54.
  - ALL STATE AND LOCAL TRENCH SAFETY ORDERS SHALL BE RIGIDLY ENFORCED.

County Sanitation Districts shall be notified prior to the following so that required inspections can be made (Phone: 656-3097):  
 (1) Discontinuance of construction of mains or branches.  
 (2) Discontinuing water service to mains or branches.  
 (3) Discontinuing material from mains or branches.  
 (4) Construction of house connections to District trunk sewers.  
 (5) Acceptance of the project.

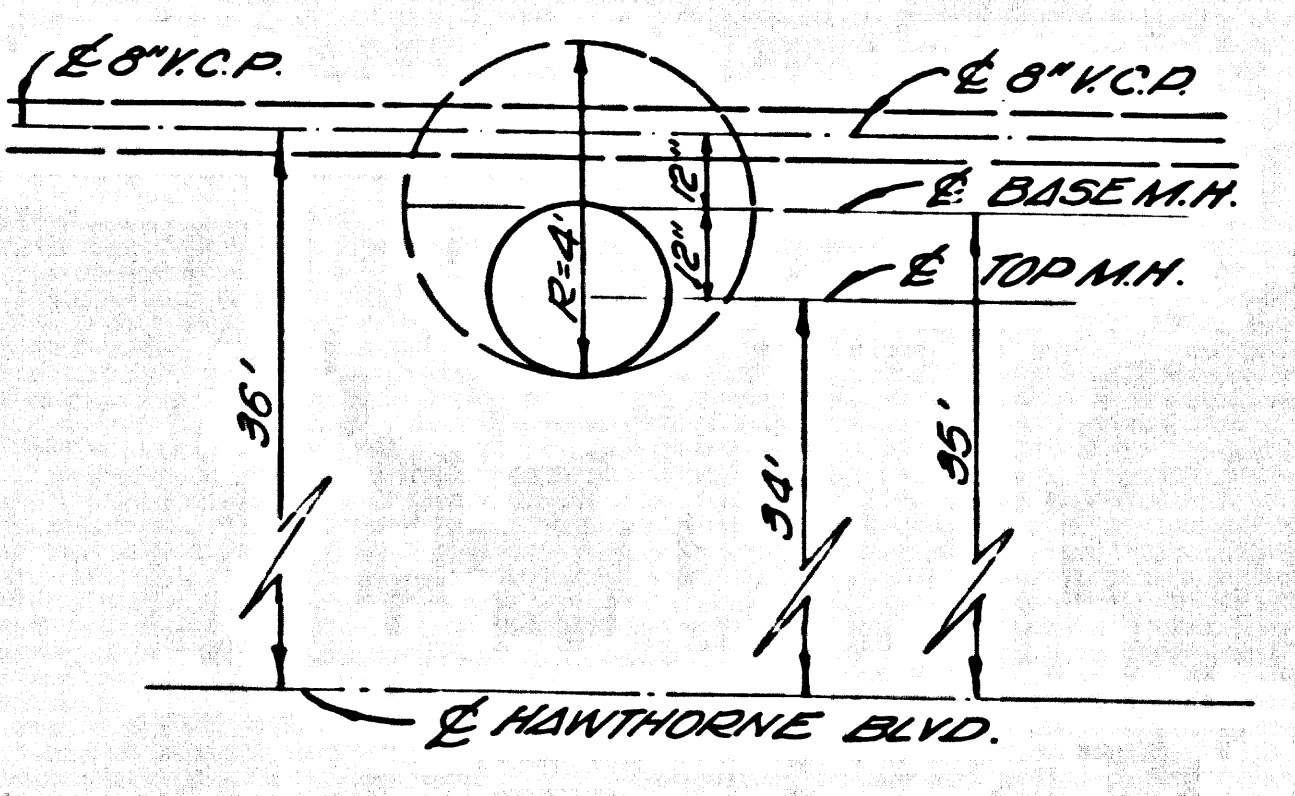
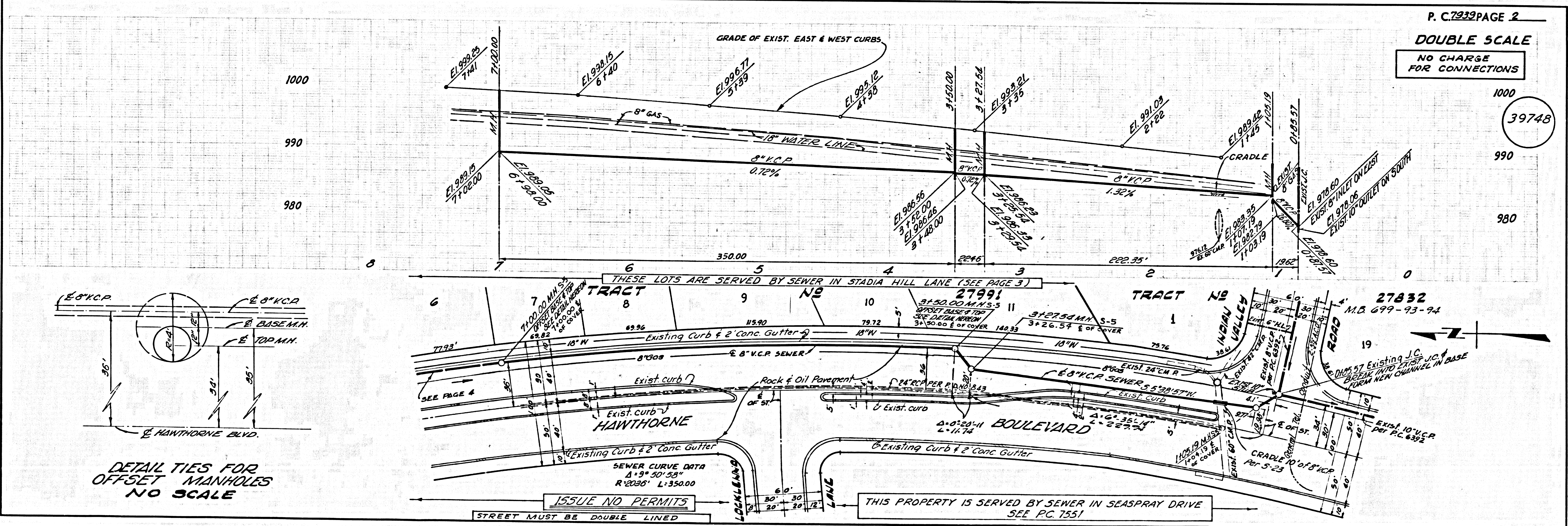
**COLLECT CHARGES AS INDICATED**

NO CONNECTIONS FOR THE DISPOSAL OF INDUSTRIAL WASTES SHALL BE MADE TO SEWERS SHOWN ON THESE DRAWINGS WITHOUT WRITTEN PERMISSION FROM THE CHIEF ENGINEER AND GENERAL MANAGER OF THE COUNTY SANITATION DISTRICTS.

COUNTY OF LOS ANGELES, CALIFORNIA  
 JOHN A. LAMBIE, COUNTY ENGINEER  
 J. D. PARKHURST, CHIEF ENGINEER  
 CO. SAN. DIST. NO. 12  
 APPROVED BY: *Robert J. Miller* REGIONAL ENGINEER  
 APPROVED BY: *W. J. Westerman* OFFICE ENGINEER

CHECKED BY: *Bernard J. Valachi*  
 REG. C.E. NO. 10652

J. N. 0250 02



ISSUE NO PERMITS

THIS PROPERTY IS SERVED BY SEWER IN SEASPRAY DRIVE SEE P.C. 7551



