

B.M. L.A. Co. San. Dist. ELEV. 183.550
 1/2" Nail in Lead Top Conc. Ch. 3' 3/4" DCR @
 S.E. Cor. Beverly Blvd. & Lexington Rd.
 FB 1140 PG 104 QUAD. 1955

20. THE FOLLOWING LATEST REVISED SPECIFICATIONS ARE ON FILE IN THE OFFICE OF THE COUNTY ENGINEER AND SHALL APPLY IN THE CONSTRUCTION OF THIS PROJECT:

MINIMUM PUBLIC SAFETY REQUIREMENTS	3-1
STANDARD MANHOLE SIZE	3-2
STANDARD MANHOLE DEPTH	3-3
SECTION OF PIPE BETWEEN MANHOLES	3-4
CONCRETE AND ENCASEMENT	3-5
TYPE OF PIPE SUPPORT	3-6
ALLOWABLE TRENCH WIDTHS	3-7
LOADING MANHOLE FRAMES AND COVERS	3-8
NON-REINFORCED PRECAST CONCRETE MANHOLE	3-9

REVISION No. 1

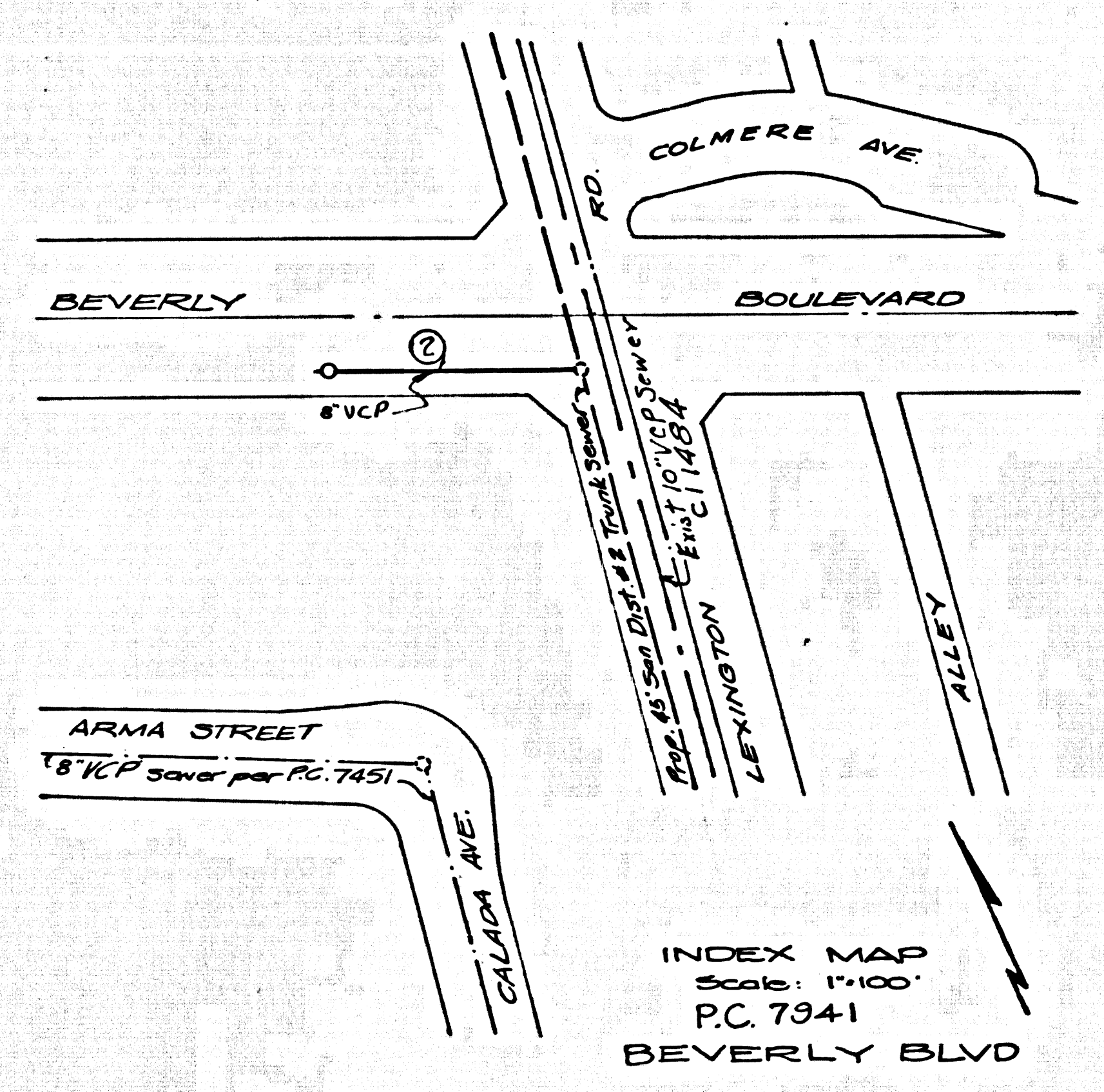
- Removed connection of 8" R.C.P. Sewer to 10" Sewer.
- Added connection to prop. 45' San. Dist. J.O.B. Relief Trunk Sewer.
- Changed length of 8" R.C.P. Sewer.
- Changed depth of & rate of grade of 8" R.C.P. Sewer.
- Removed Extra Depth note.
- Changed Stationing.

Approved by: *[Signature]* 11/19/67
 R.C. Murphy 18082

REVISION No. 2

- Updated Notes and Plan, G-13-73.

Approved by: *[Signature]* 02/06/68
 R.C. Murphy 15944



PICO RIVERA BLDG. DIST. NO. 11.01

- NOTE:
- PROVIDE STAKES ON THE PROPERTY LINE OR PROPERTY LINES PRODUCED AT RIGHT ANGLES TO THE SEWER LINE AT THE CENTER LINE OF EACH MANHOLE.
 - NO REPRESENTATIVE OF THE CITY ENGINEER WILL SURVEY OR LAY OUT ANY PORTION OF THE WORK.
 - THE PRIVATE ENGINEER SHALL FURNISH THE CITY ENGINEER WITH GRADE SHEETS AND STATIONING FOR ALL HOUSE LATERALS AND "T" OR "Y" BRANCHES AND SHALL PROVIDE STAKES FOR THEM AT THEIR PROPER LOCATIONS WITH STATIONING PLAINLY MARKED. ALL HOUSE LATERALS SHALL BE CONSTRUCTED IN A STRAIGHT ALIGNMENT AT RIGHT ANGLES FROM THE MAIN LINE SEWER EXCEPT AS SHOWN ON THE PLANS. HOUSE LATERALS FROM CHIMNEYS SHALL NOT HAVE AN ANGLE OF LESS THAN 45° WITH THE MAIN LINE SEWER. ANY CHANGE IN ALIGNMENT SHALL BE REQUESTED IN WRITING BY THE PRIVATE ENGINEER.
 - THE PRIVATE ENGINEER SHALL FURNISH THE HOUSE LATERAL DEPTH AT THE PROPERTY LINE BELOW THE TOP OF CURB ELEVATION FOR EACH HOUSE LATERAL ON THE GRADE SHEET.
 - NO REVISIONS SHALL BE MADE IN THESE PLANS WITHOUT THE APPROVAL OF THE CITY ENGINEER.
 - THE CONTRACTOR SHALL NOTIFY THE CONSTRUCTION DIVISION BY TELEPHONE, SEC. 7011, EXT. 2840, AT LEAST TWENTY-FOUR HOURS BEFORE STARTING ANY WORK UNDER THIS CONTRACT.
 - ALL STRUCTURES SHALL BE EITHER BRICK MANHOLES PER S-3 OR PRECAST CONCRETE MANHOLES PER S-3C.
 - USE STANDARD MANHOLE FRAMES AND COVERS, S-3S.
 - "T" BRANCHES MAY BE USED IN LIEU OF "WYES" IN ALL LOCATIONS.
 - USE EXTRA STRENGTH PIPE. ALL PIPE IS STANDARD DEPTH EXCEPT AS NOTED.
 - REFER TO SECTION 7-0-1 OF THE STANDARD SPECIFICATIONS REGARDING SAFETY CHECKS.
 - IF A POWER POLE IS WITHIN THREE FEET OF THE SEWER, THE SEWER SHALL BE ENCASED, PER S-23, TWO FEET ON EACH SIDE FROM THE POINT OF INTERFERENCE.
 - IF DURING THE COURSE OF CONSTRUCTION IT IS DETERMINED THAT THERE IS LESS THAN FOUR FEET OF COVER OVER THE TOP OF A MAIN LINE OR HOUSE LATERAL V.C.P. SEWER WHICH IS NOT INDICATED ON THE PLANS, THE PIPE SHALL BE ENCASED PER S-23, UNLESS OTHERWISE APPROVED BY THE CITY ENGINEER.
 - HOUSE LATERALS TO BE CONSTRUCTED WITH INVERTS AT PROPERTY LINE & FEET BROW CURB GRADE.
 - RESURFACE ALL TRENCHES WITHIN PAVED AREAS TO MEET L.A. COUNTY ROAD DEPT. OR CALIFORNIA STATE HIGHWAY REQUIREMENTS IN ACCORDANCE WITH PERMITS.
 - SEWERS TO BE TESTED FOR LEAKAGE PER SECTION 700-137 UNIFORM STANDARD SPECIFICATIONS AND SPECIAL PROVISIONS.
 - WHIPPED CEMENT JOINTS SHALL BE THE 30" TYP. TYP. STANDARD SPECIFICATIONS SECTION 200-12.
 - BEFORE STARTING WORK, THE CONTRACTOR SHALL MAKE ARRANGEMENTS WITH THE DIRECTOR OF ENGINEERING SERVICES FOR TRAFFIC CONTROL AND SHALL DEPOSIT A BOND WITH THE CITY IN AN AMOUNT SUFFICIENT TO COVER THE COST OF SAID TRAFFIC CONTROL.
 - ALL JOINTS BETWEEN COUPLED MANHOLES AND VENTED CURB PIPES SHALL BE MADE WITH A RUBBER SLIME JOINT TYPE 2011 WITH PLUMBER'S GREASE PER STANDARD SPECIFICATIONS SECTION 200-12.
- County Sanitation Districts shall be notified prior to the following so that required inspection can be made (Phone: 337-1025):
- Commencement of construction of manhole on District Trunk Sewer.
 - Bringing into existing manhole on District Trunk Sewer.
 - Core drilling District trunk sewer.
 - Construction of house connections to District Trunk Sewer.
 - Acceptance of the project.

COLLECT CHARGES AS INDICATED
[Signature] 11-14-67

NO CONNECTIONS FOR THE DISPOSAL OF INDUSTRIAL WASTES SHALL BE MADE TO SEWERS SHOWN ON THESE DRAWINGS WITHOUT WRITTEN PERMISSION FROM THE CHIEF ENGINEER AND GENERAL MANAGER OF THE COUNTY SANITATION DISTRICTS.

PROFILE ALIGNMENT AND GRADE OF
 SANITARY SEWERS P.C. 7941
 TO BE CONSTRUCTED IN
 BEVERLY BOULEVARD PAGE 1

PRIVATE CONTRACT NO. 7941

W.S. 36
 1 SHEET : 2 PAGES
 SCALE: HORIZ. 1"=40' VERT. 1"=4'
 PREPARED IN THE OFFICES OF
 RAFFORD & ASSOCIATES
 2838 Rowland Ave. Los Angeles, Calif. 90038
 Phone RA 2-2513
 Under the direction of
 W. J. Parkhurst
 REG. C. E. NO. 14892

43,943

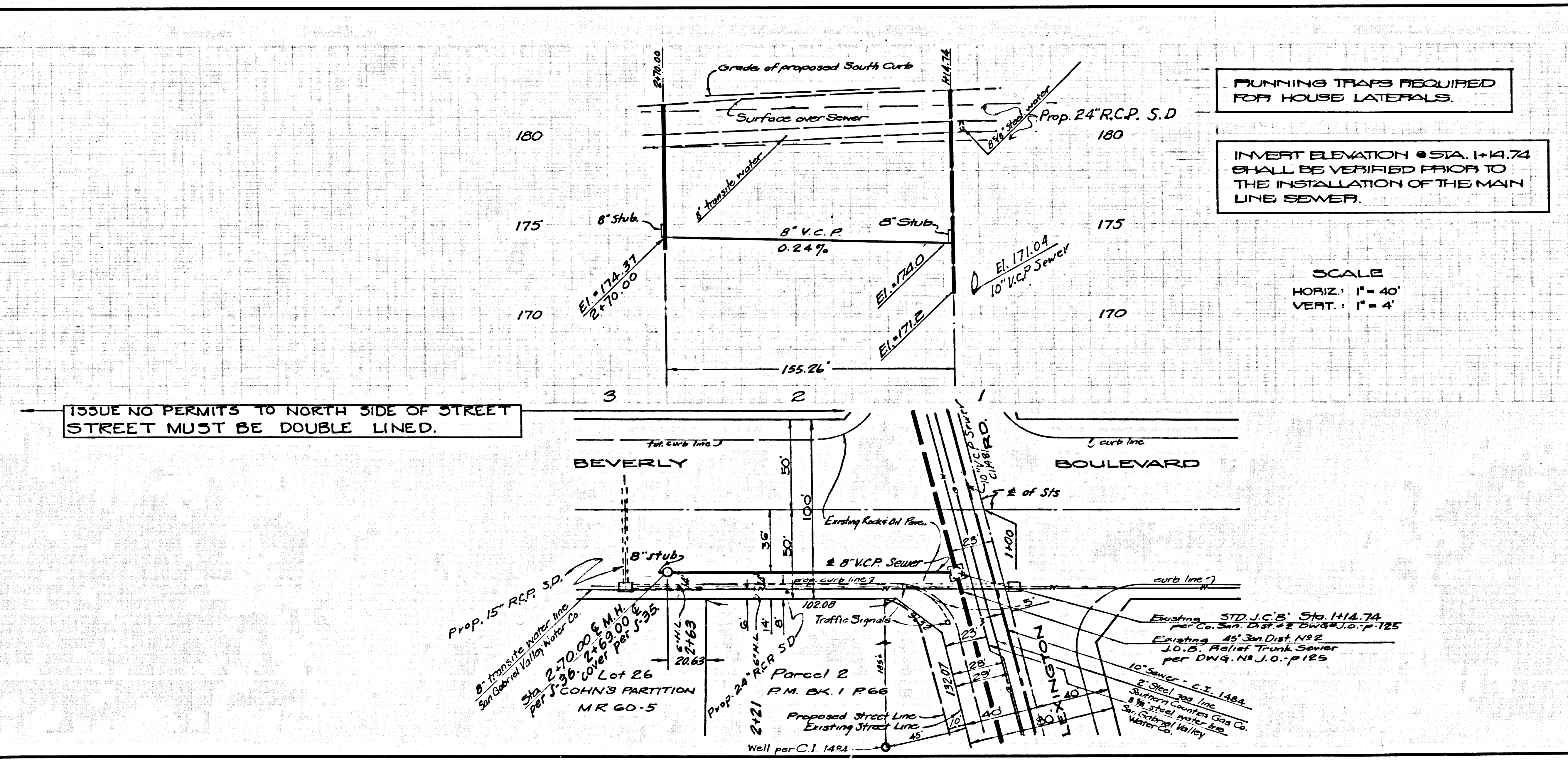
FOR LEGEND SEE PLAN NO. S-1

NOTE:
 GRADES TO WHICH THIS IMPROVEMENT IS TO BE CONSTRUCTED ARE SHOWN ON PLANS AND PROFILES. GRADE POINTS FOR TOP OF CURB, CENTER LINE OF STREETS OR CENTER LINE OF ALLEYS ARE SHOWN BY CIRCLES ON PROFILES AT ALL POINTS BETWEEN DESIGNATED POINTS. THE GRADE SHALL BE ESTABLISHED SO AS TO CONFORM TO A STRAIGHT LINE DRAWN BETWEEN SAID DESIGNATED POINTS. ELEVATIONS ARE IN FEET ABOVE U.S.C. & G.S. MEAN LEVEL DATUM OF 1929.
 THIS DRAWING AND THE DATA HEREON ARE HEREBY MADE A PART OF THE SPECIFICATIONS.
 WORK SHALL BE CONSTRUCTED ACCORDING TO THE UNIFORM STANDARD SPECIFICATIONS FOR PUBLIC WORKS CONSTRUCTION AND CITY ENGINEER SPECIAL PROVISIONS DATED 12-23-55, AS REVISED, AND SHALL BE PROSECUTED ONLY IN THE PRESENCE OF THE CITY ENGINEER.
 BEFORE WORK CAN BE STARTED, THE CONTRACTOR MUST OBTAIN A PERMIT TO EXCAVATE IN CITY STREETS FROM THE L.A. COUNTY ROAD DEPT., DISTRICT OFFICE NO. 11 AND MAKE A DEPOSIT WITH THE CITY OF PICO RIVERA, P.C. 15, P. 320-A, 3-AVE. SUFFICIENT TO COVER THE COST OF CONSTRUCTION INSPECTION AND RECORD PLANS.
 APPROVAL OF THIS PLAN BY THE CITY OF PICO RIVERA DOES NOT CONSTITUTE A REPRESENTATION AS TO THE ACCURACY OF THE LOCATION OR OF THE EXISTENCE OR NON-EXISTENCE OF ANY UNDERGROUND UTILITY PIPE, OR STRUCTURE WITHIN THE LIMITS OF THE PROJECT. THIS NOTE APPLIES TO ALL PAGES.
 IF WORK IS TO BE DONE IN A STATE HIGHWAY, A PERMIT MUST BE OBTAINED FROM THE STATE OF CALIFORNIA, DIVISION OF HIGHWAYS, 130 SOUTH SPRING STREET, LOS ANGELES, CALIFORNIA.

CITY OF PICO RIVERA, CALIFORNIA
 HARVEY BRANOFF CITY ENGINEER J. D. PARKHURST, CHIEF ENGINEER
 APPROVED BY *[Signature]* APPROVED BY *[Signature]*
 L.S. CERRITOS REGIONAL ENGINEER OFFICE ENGINEER

CHECKED BY *[Signature]* 11/14/67
 REG. C.E. NO. 15931

REVIEWED BY *[Signature]* INDUSTRIAL WASTE DIVISION APPROVED BY *[Signature]* DIRECTOR OF ENGINEERING SERVICES CITY OF PICO RIVERA



P.C. 7941 PAGE 2
 NO CHARGE FOR CONNECTIONS

43,944