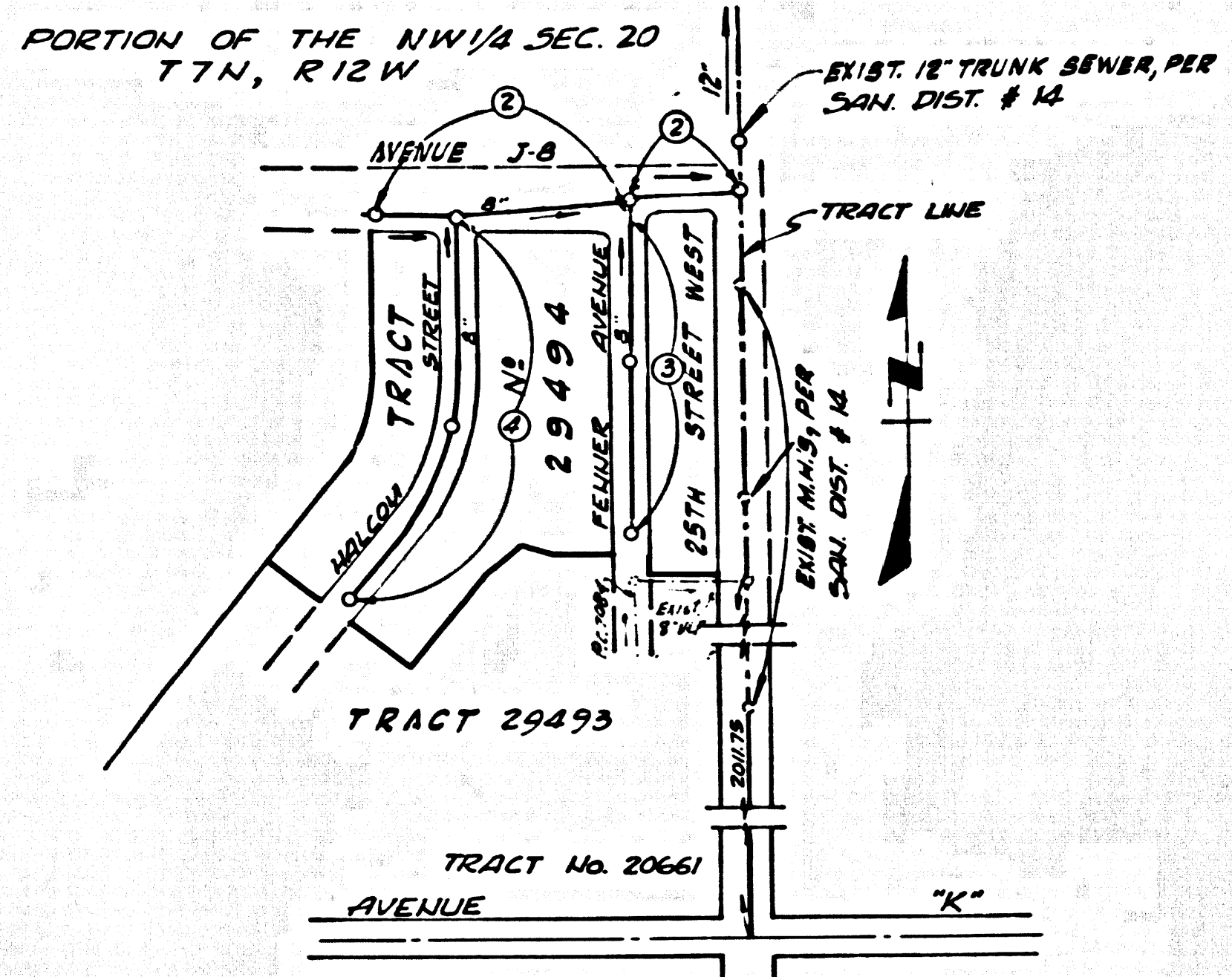


B.M. 54-721 ELEV. 2388228
 L. & T. CONC. DRIVE NEAR CONC. BLDG.
 POINT 3.42' S. E. AVE. K E 263' W. E.
 25.21' S. W. MK'D B.M.
 LANCASTER QUAD. 1962



NOTE: NUMBERS IN CIRCLES INDICATE PAGE NUMBERS
 INDEX MAP
 TRACT NO. 29494
 P.C. 7944
 SCALE: 1"=300'

- County Sanitation Districts should be notified prior to the following so that required inspection can be made (Phone 337-1025):
- (1) Commencement of construction of manholes on District trunk sewer.
 - (2) Breaking into existing manhole on District trunk sewer.
 - (3) Core drilling District trunk sewer.
 - (4) Construction of house connections to District trunk sewer.
 - (5) Acceptance of the project.

NOTE: CONTRACTOR SHALL VERIFY OUTLET ELEVATION ON EXISTING TRUNK SEWER IN FIELD.

LANCASTER BLDG. DIST. NO. 8

- NOTES:
1. PROVIDE STAKES ON THE PROPERTY LINE OR PROPERTY LINES PRODUCED AT RIGHT ANGLES TO THE SEWER LINE AT THE CENTER LINE OF EACH MANHOLE.
 2. NO REPRESENTATIVE OF THE COUNTY ENGINEER WILL SURVEY OR LAY OUT ANY PORTION OF THE WORK.
 3. THE PRIVATE ENGINEER SHALL FURNISH THE COUNTY ENGINEER WITH GRADE SHEETS AND STATIONING FOR ALL HOUSE LATERALS AND Y-BRANCHES AND SHALL PROVIDE STAKES FOR THEM AT THEIR PROPER LOCATIONS WITH STATIONING PLAINLY MARKED. ALL HOUSE LATERALS SHALL BE CONSTRUCTED IN A STRAIGHT ALIGNMENT AT RIGHT ANGLES FROM THE MAIN LINE SEWER EXCEPT AS SHOWN ON THE PLANS. HOUSE LATERALS FROM CHIMNEYS SHALL NOT HAVE AN ANGLE OF USE TRAM 45° WITH THE MAIN LINE SEWER. ANY CHANGE IN ALIGNMENT SHALL BE REQUESTED IN WRITING BY THE PRIVATE ENGINEER.
 4. THE PRIVATE ENGINEER SHALL FURNISH THE HOUSE LATERAL DEPTH AT THE PROPERTY LINE BELOW THE TOP OF CURB ELEVATION FOR EACH HOUSE LATERAL ON THE GRADE SHEET.
 5. NO REVISIONS SHALL BE MADE IN THESE PLANS WITHOUT THE APPROVAL OF THE COUNTY ENGINEER.
 6. THE CONTRACTOR SHALL NOTIFY THE CONSTRUCTION DIVISION BY TELEPHONE, MADISON 9-4747, EXT. 8153, AT LEAST TWENTY-FOUR HOURS BEFORE STARTING ANY WORK UNDER THIS CONTRACT.
 7. ALL STRUCTURES SHALL BE EITHER BRIDGE MANHOLE PER P-3 OR PRECAST CONCRETE MANHOLE PER S-5 OR S-6.
 8. USE STANDARD MANHOLE FRAMES AND COVERS, S-16, EXCEPT AS NOTED.
 9. MANHOLE TOPS IN UNIMPROVED RIGHTS-OF-WAY TO BE SIX INCHES ABOVE FINISHED GRADE.
 10. USE EXTRA STRENGTH PIPE. ALL PIPE IS STANDARD DEPTH EXCEPT AS NOTED.
 11. USE CEMENT MORTAR OR MECHANICAL COMPRESSION JOINTS FOR ALL V.C.P. JOINTS PER SPECS. SECT. 34, 48 & 49.
 12. WHERE EVER GROUND WATER IS ENCOUNTERED DURING THE CONSTRUCTION OF THE SEWER, THE V.C.P. JOINTS SHALL BE OF JOINT COMPOUND PER SPECS. SECT. 33 & 48, OR MECHANICAL COMPRESSION JOINTS PER SPECS. SECT. 38.
 13. IF A POWER POLE IS WITHIN THREE FEET OF THE SEWER, THE SEWER SHALL BE ENCASED, PER S-23 CASE IN TWO FEET ON OTHER SIDE FROM THE POINT OF INTERFERENCE.
 14. IF DURING THE COURSE OF CONSTRUCTION IT IS DETERMINED THAT THERE IS LESS THAN FOUR FEET OF COVER OVER THE TOP OF A MAIN LINE OR HOUSE LATERAL V.C.P. SEWER WHICH IS NOT INDICATED ON THE PLANS, THE PIPE SHALL BE ENCASED PER S-23 CASE UNLESS OTHERWISE APPROVED BY THE COUNTY ENGINEER.
 15. HOUSE LATERALS TO BE CONSTRUCTED WITH INVERTS AT PROPERTY LINE... 6" FEET BELOW CURB GRADE EXCEPT AS NOTED.
 16. REIMBURSE ALL TRUCKS WITHIN PAVED AREAS TO ARMY L.A. COUNTY ROAD DEPT. OR CALIFORNIA STATE HIGHWAY DEPARTMENT IN ACCORDANCE WITH PERMITS.
 17. FOR ALLOWABLE LEAKAGE TEST USE FORMULA NO. 100... SPECS. SECT. 54.
 18. ALL STATE AND LOCAL TRUCK SAFETY ORDERS WILL BE RIGIDLY ENFORCED.
 19. TESTS MAY BE USED IN PLACE OF TESTS AND AT THE SAME ANGLE OF INCLINATION AS NOTED.

NOTICE TO CONTRACTOR.
 The existence and location of any underground utility pipes or structures shown on these plans are obtained by a search of the available records. To the best of our knowledge there are no existing utilities except as shown on these plans. The Contractor is required to take due precautionary measures to protect the utility lines shown and any other lines not of record or not shown on these plans.

COLLECT CHARGES AS INDICATED
Arthur W. Kauder

NO CONNECTIONS FOR THE DISPOSAL OF INDUSTRIAL WASTES SHALL BE MADE TO SEWERS SHOWN ON THESE DRAWINGS WITHOUT WRITTEN PERMISSION FROM THE CHIEF ENGINEER AND GENERAL MANAGER OF THE COUNTY SANITATION DISTRICTS.

PROFILE ALIGNMENT AND GRADE OF
 SANITARY SEWERS
 TO BE CONSTRUCTED IN

TRACT NO. 29494 39432

PRIVATE CONTRACT NO. 7944

W.S. 73
 2 SHEETS, 4 PAGES
 SCALE: VERT. 1"=4' HORIZ. 1"=40'
 OCTOBER, 1967

PREPARED IN THE OFFICES OF
 SCHORR ENGINEERS
 1805 VICTORIA BOULEVARD
 VAN NUYS, CALIFORNIA
 BY *Arthur W. Kauder*
 REG. C. E. NO. 12755

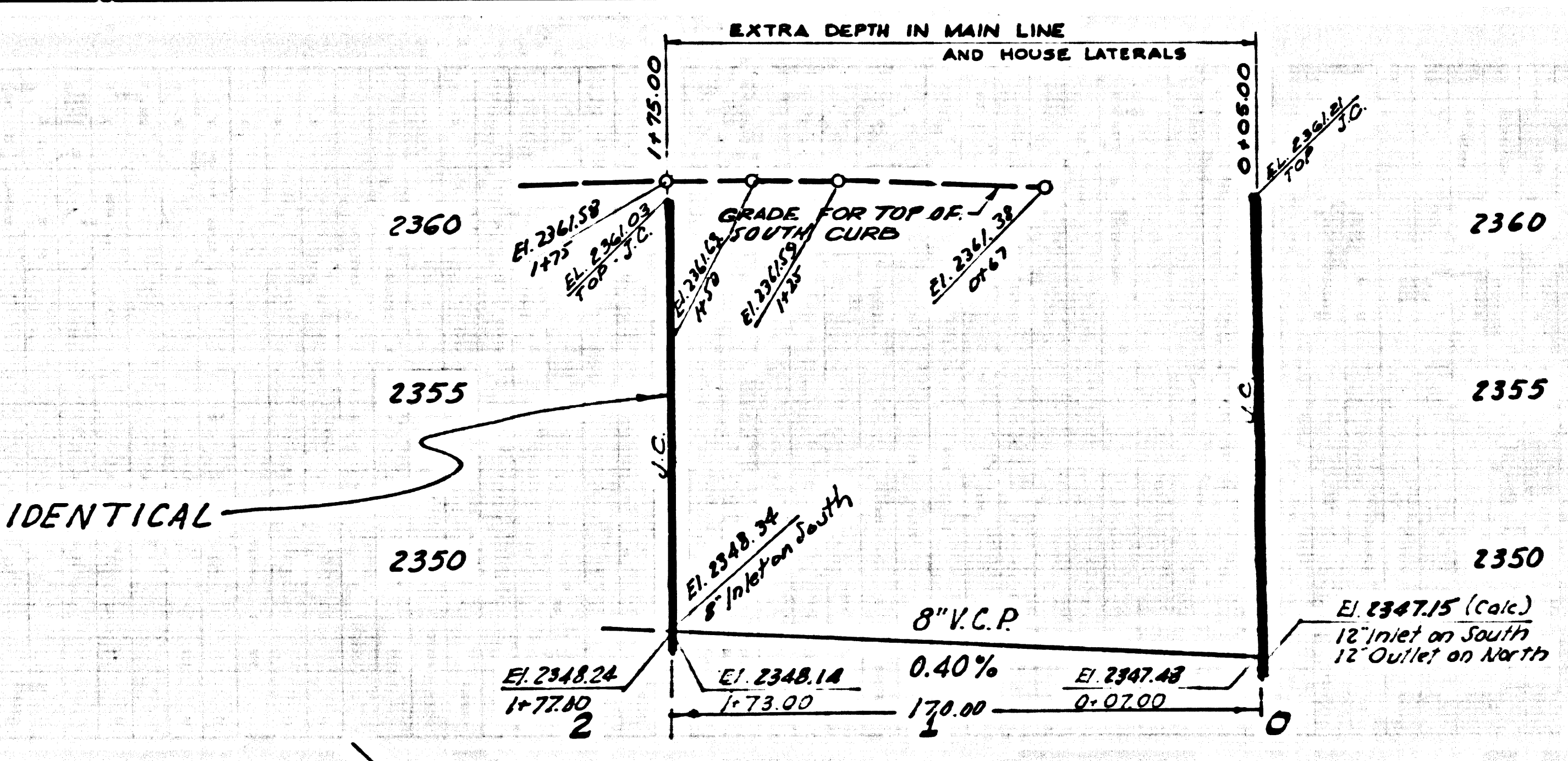
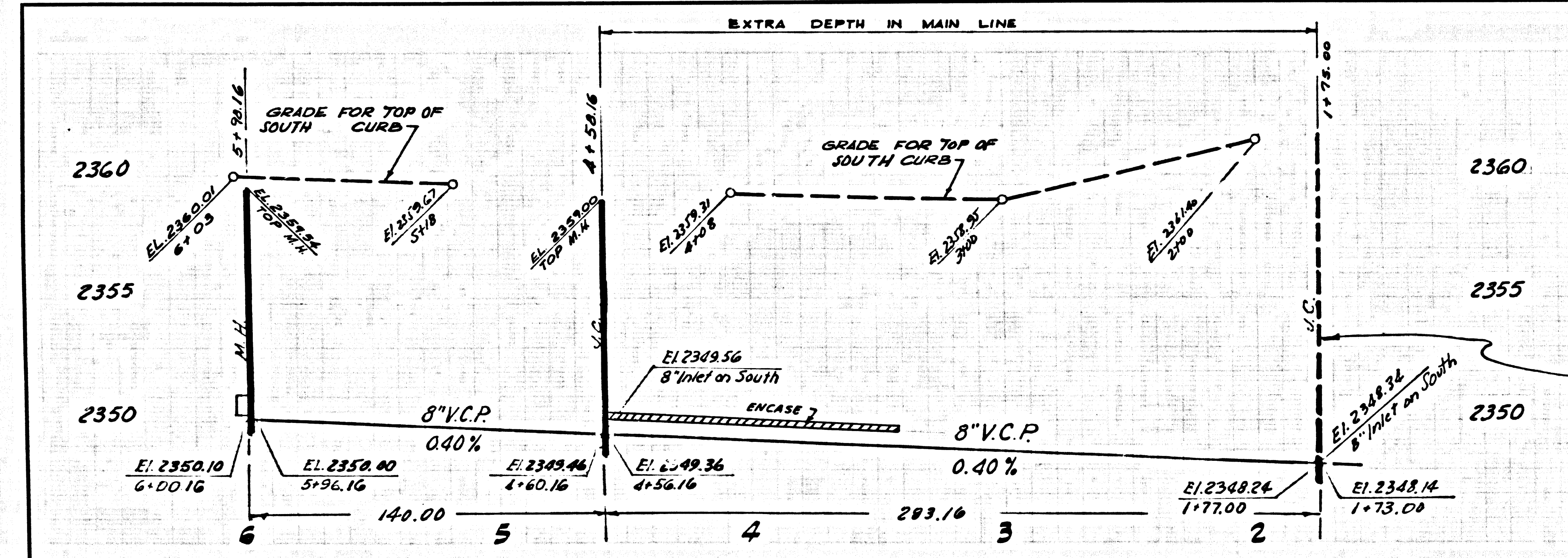
FOR LEGEND SEE PLAN NO. S-6-64

NOTE: GRADES TO WHICH THIS IMPROVEMENT IS TO BE CONSTRUCTED ARE SHOWN ON PLANS AND PROFILES. GRADE POINTS FOR TOP OF CURBS, CENTER LINE OF STREETS, OR CENTER LINE OF ALLEYS ARE SHOWN BY CIRCLES ON PROFILES. AT ALL POINTS BETWEEN DESIGNATED POINTS THE GRADES SHALL BE ESTABLISHED TO ALL TO CONFORM TO A STRAIGHT LINE DRAWN BETWEEN SAID DESIGNATED POINTS. ELEVATIONS ARE IN FEET ABOVE U.S.C. & G.S. SEA LEVEL DATUM OF 1929. THE DRAWINGS AND THE DATA HEREON ARE HEREBY MADE A PART OF THE SPECIFICATIONS. AS APPROVED WORK SHALL BE CONSTRUCTED ACCORDING TO STANDARD SPECIFICATIONS DATED FEB. 23, 1962 NOW FILED IN THE OFFICE OF THE COUNTY ENGINEER AND SHALL BE PROSECUTED ONLY IN THE PRESENCE OF THE COUNTY ENGINEER. BEFORE WORK CAN BE STARTED, THE CONTRACTOR MUST OBTAIN A PERMIT TO EXCAVATE IN COUNTY STREETS FROM THE L.A. COUNTY ROAD DEPT., DISTRICT ENGINEER, ROOM 300, COUNTY ENGINEERING BUILDING, 600 WEST SECOND STREET, LOS ANGELES, CALIFORNIA. APPROVAL OF THIS PLAN BY THE COUNTY OF LOS ANGELES DOES NOT CONSTITUTE A REPRESENTATION AS TO THE ACCURACY OF THE LOCATION OR THE EXISTENCE OF ANY UNDERGROUND UTILITY PIPE, OR STRUCTURE WITHIN THE LIMITS OF THE PROJECT. THIS NOTE APPLIES TO ALL PAGES. IF WORK IS TO BE DONE IN A STATE HIGHWAY, A PERMIT MUST BE OBTAINED FROM THE STATE OF CALIFORNIA, DIVISION OF HIGHWAYS, 120 SOUTH SPRING STREET, LOS ANGELES, CALIFORNIA.

COUNTY OF LOS ANGELES, CALIFORNIA
 JOHN A. LAMBIE, COUNTY ENGINEER
 J. D. PARKHURST, CHIEF ENGINEER
 CO. SAN. DIST. NO. 18
 APPROVED BY *Arthur W. Kauder*
 OFFICE ENGINEER

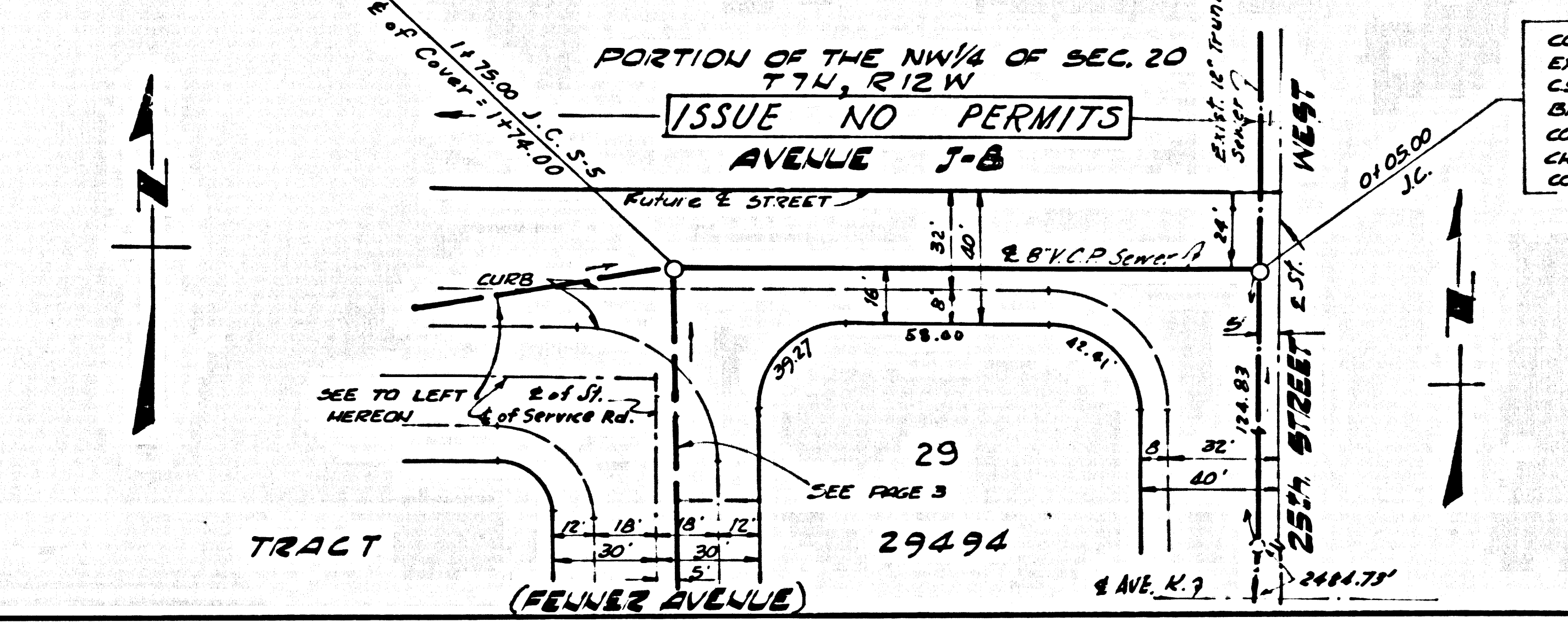
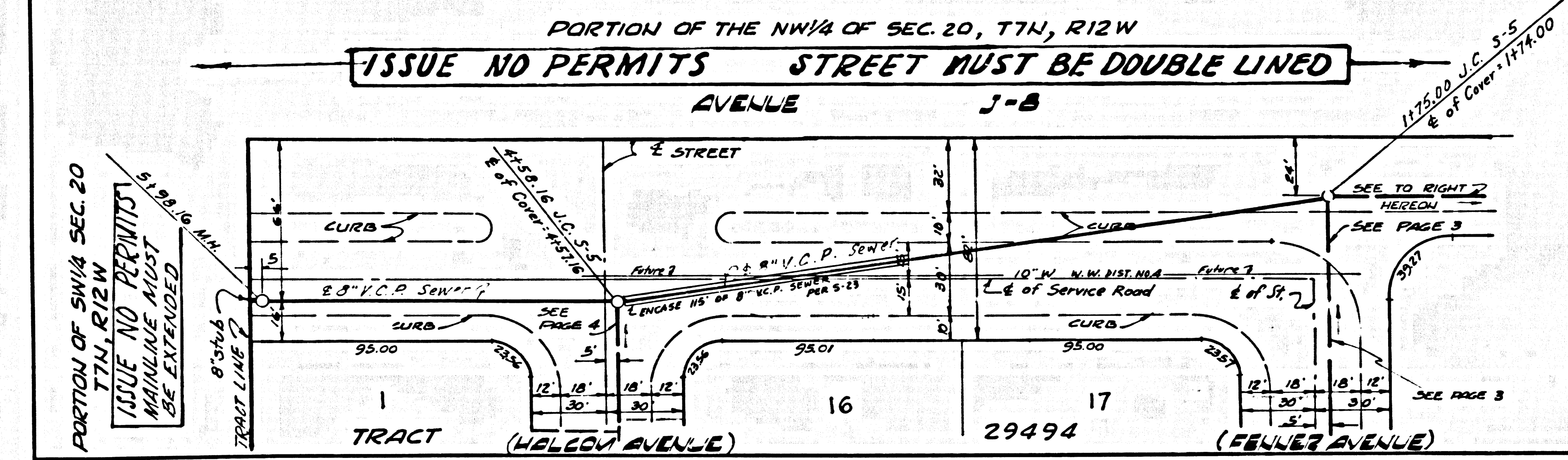
APPROVED BY *John W. Anderson*
 REGIONAL ENGINEER
 CHECKED BY *Richard S. Roach* 10/2/67
 REG. C. E. NO. 16742

J.N. 0250.02

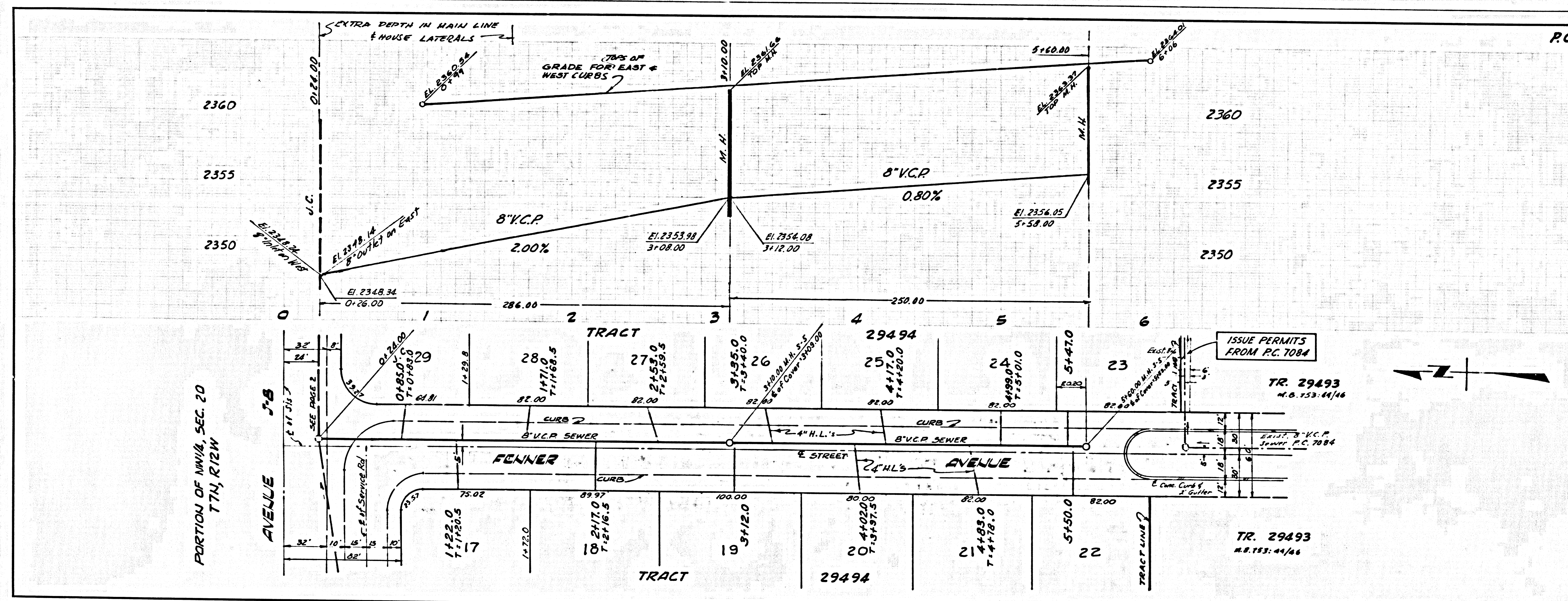


P.C. 7944 PAGE 2
 NO CHARGE FOR CONNECTIONS

39433

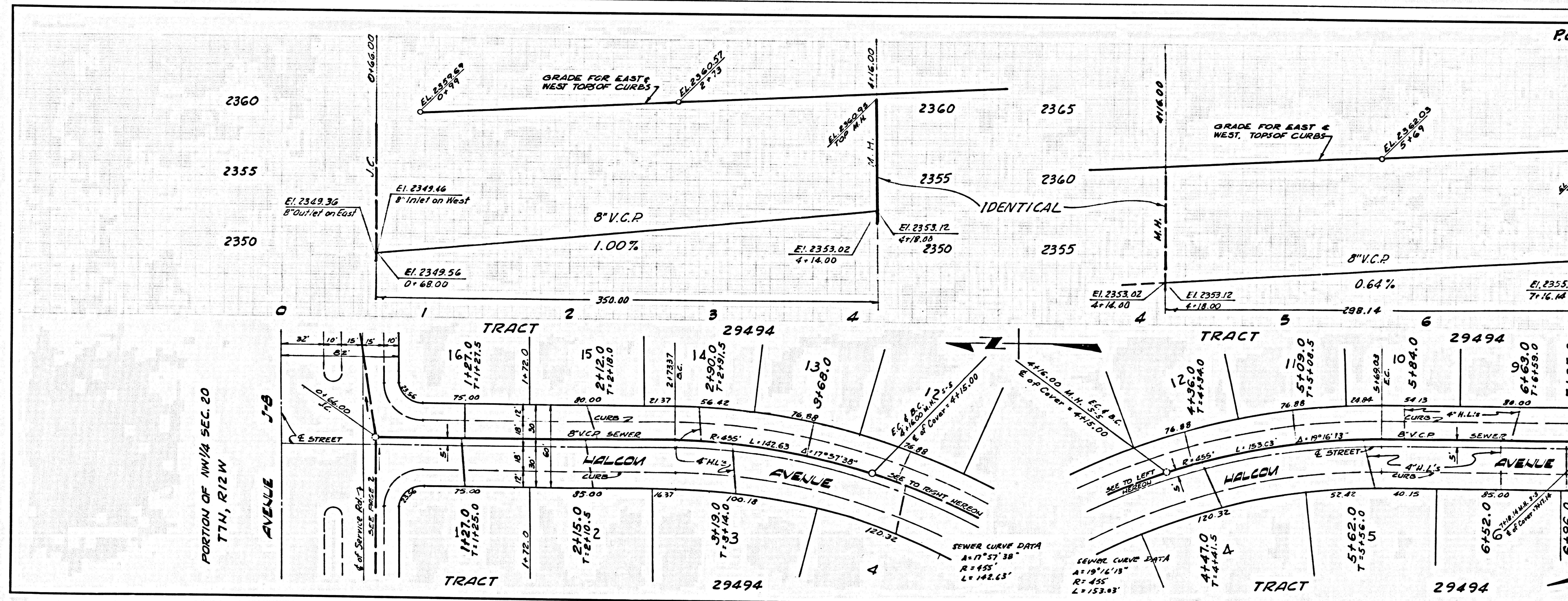


CONSTR. STD. J.C. AROUND EXIST. 12" TRUNK PER C.S.D. STD. 5-0 201 & 207 BREAK OUT PIPE FOR CONNECTION & FORM CHANNEL IN CONC. COVER TO READ C.S.D. NO. 18



NO CHARGE FOR CONNECTIONS

39434



NO CHARGE FOR CONNECTIONS

39435