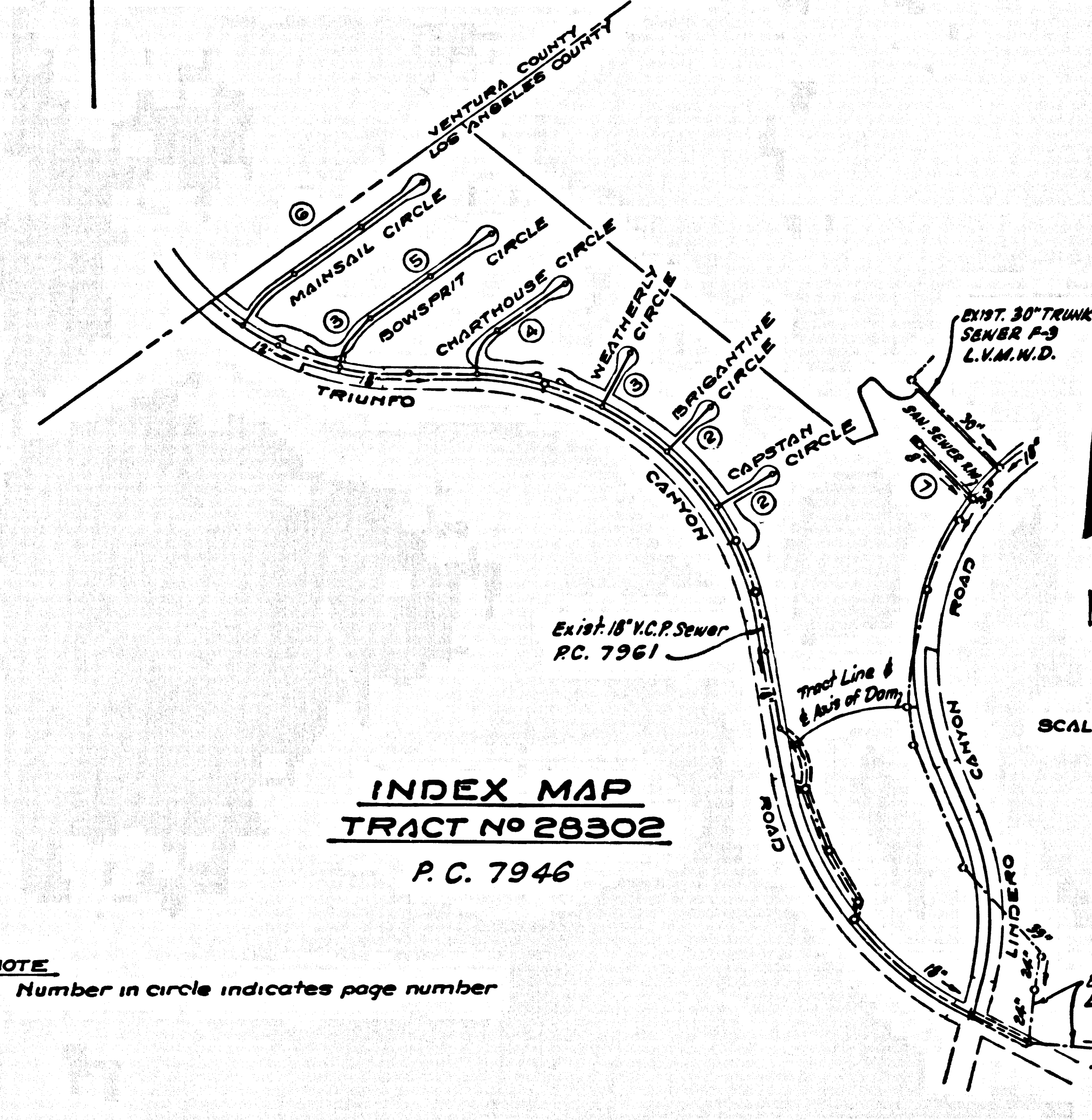


B.M. 5Y-5641 ELEV. 946.274  
 CHIS. 50' ON W. SIDE C.B. (DROPPINLET)  
 ON E. VENTURA BOULEVARD @  
 STA. 821+85 ± 3 MI. W. CORNELL ROAD  
 MALIBU QUAD. 1960



INDEX MAP  
 TRACT No. 28302  
 P.C. 7946

NOTE:  
 Number in circle indicates page number

THE ACCURACY OF THE LOCATION OF OR THE EXISTENCE OR NON EXISTENCE OF ANY UTILITY PIPE OR STRUCTURE WITHIN THE LIMITS OF THIS PROJECT DOES NOT CONSTITUTE RESPONSIBILITY BY THE ENGINEER.

TESTING PER LAS VIRGENES MUNICIPAL WATER DISTRICT

1. INFILTRATION AND LEAKAGE TEST  
 METHOD USED FOR TESTING SHALL BE THE SAME AS LOS ANGELES COUNTY EXCEPT THE FORMULA TO BE USED IS AS FOLLOWS:  
 0.015 GALLONS / MINUTE / INCH OF DIAMETER / 1000 FEET OR 250 GALLONS / DAY / INCH OF DIAMETER / MILE

2. MANHOLE LEAKAGE TEST  
 AT THE DISCRETION OF THE DISTRICT'S REPRESENTATIVE ONE MANHOLE OUT OF TEN MANHOLES AND A MINIMUM OF TWO WILL BE FILLED WITH WATER AND AFTER THREE HOURS WILL BE CHECKED FOR LEAKAGE WITH NO DROP IN LEVEL. FOR EVERY MANHOLE NOT PASSING TESTS FIVE MORE WILL BE TESTED AT THE DISCRETION OF THE DISTRICT'S REPRESENTATIVE.

3. AIR TESTING  
 THE DIFFERENCE IN ELEVATION BETWEEN THE INVERT OF THE UPPER STRUCTURE AND THE INVERT OF THE LOWER STRUCTURE IS MORE THAN SIX FEET (6') AN AIR TEST WILL BE MADE. THE TIME TAKEN TO LOSE ONE (1) POUND PER SQUARE INCH GAGE PRESSURE FROM THREE (3) POUNDS PER SQUARE INCH GAGE PRESSURE TO TWO (2) POUNDS PER SQUARE INCH GAGE PRESSURE SHALL NOT BE LESS THAN THIRTY DOWN ON THE FOLLOWING TABLE:

MAIN PIPE DIAMETER	MINIMUM TIME LOSE
12"	1 MINUTE
18"	2 MINUTES
24"	3 MINUTES
30"	4 MINUTES

IF THE TIME IS LESS THAN LISTED IN THE TABLE ABOVE THE CONTRACTOR SHALL MAKE REPAIRS AS ARE NECESSARY TO ELIMINATE EXCESSIVE LEAKAGE.

ARTS: (CONT.)

22. SPECIAL BACKFILL IN DESIGNATED AREAS  
 (a) BACKFILL TRENCH AND REPLACE OTHER PARTY REMOVED SO AS TO ACHIEVE THE NATURAL OR FINISHED GRADE AND SLOPE SHOWN ON THE GRADING PLAN APPROVED FOR THIS TRACT BY THE BUILDING AND SAFETY DIVISION.  
 (b) ALL BACKFILL AND BARTH REPLACES SHALL BE COMPACTED TO A MINIMUM OF 95% OF ALLOWED DENSITY PER A.C.T.M. STANDARD METHOD OF TEST D 155-57 T-1 AS APPROVED. ACCEPTABLE CERTIFICATION OF SUCH COMPACTION SHALL BE SUBMITTED TO THE CONSTRUCTION DIVISION.

SCALE 1" = 600'

EXIST. TRUNK SEWER F-2  
 L.V.M.W.D.

DOUBLE SCALE  
 CALABASAS BLDG. DIST. NO. 9-I

- NOTES:
- PROVIDE STAKES ON THE PROPERTY LINE OR PROPERTY LINES PRODUCED AT RIGHT ANGLES TO THE SEWER LINE AT THE CENTER LINE OF EACH MANHOLE.
  - NO REPRESENTATIVE OF THE COUNTY ENGINEER WILL SERVEY OR LAY OUT ANY PORTION OF THE WORK.
  - THE PRIVATE ENGINEER SHALL FURNISH THE COUNTY ENGINEER WITH GRADE SHEETS AND STATIONING FOR ALL HOUSE LATERALS 17" IN 17" BRANCHES AND SHALL PROVIDE STAKES FOR THEM AT THEIR PROPER LOCATIONS WITH STATIONING PLANNED MARKERS. ALL HOUSE LATERALS SHALL BE CONSTRUCTED IN A STRAIGHT ALIGNMENT AT RIGHT ANGLES FROM THE MAIN LINE SEWER EXCEPT AS SHOWN ON THE PLANS. HOUSE LATERALS FROM CHIMNEYS SHALL NOT HAVE AN ANGLE OF LESS THAN 45° WITH THE MAIN LINE SEWER. ANY CHANGE IN ALIGNMENT SHALL BE REQUESTED IN WRITING BY THE PRIVATE ENGINEER.
  - THE PRIVATE ENGINEER SHALL FURNISH THE HOUSE LATERAL DEPTH AT THE PROPERTY LINE BELOW THE TOP OF CURB ELEVATION FOR EACH HOUSE LATERAL ON THE GRADE SHEET.
  - NO REVISIONS SHALL BE MADE IN THESE PLANS WITHOUT THE APPROVAL OF THE COUNTY ENGINEER.
  - THE CONTRACTOR SHALL NOTIFY THE CONSTRUCTION DIVISION BY TELEPHONE, MAINSON 9-27, EXT. 8151, AT LEAST TWENTY-FOUR HOURS BEFORE STARTING ANY WORK UNDER THIS CONTRACT.
  - ALL STRUCTURES SHALL BE EITHER BRICK MANHOLES PER S-23 OR PRECAST CONCRETE MANHOLES PER S-4 OR S-5 EXCEPT AS NOTED.
  - USE STANDARD MANHOLE FRAMES AND COVERS, S-18, EXCEPT AS NOTED.
  - MANHOLE TOPS IN UNIMPROVED RIGHTS-OF-WAY TO BE SIX INCHES ABOVE FINISHED GRADE.
  - USE EXTRA STRENGTH PIPE. ALL PIPE IS STANDARD DEPTH EXCEPT AS NOTED.
  - USE MECHANICAL COMPRESSION JOINTS FOR ALL V.C.P. JOINTS PER SPECS. SECS. 36, 40 & 41.
  - IF A POWER POLE IS WITHIN THREE FEET OF THE SEWER, THE SEWER SHALL BE ENCASED, PER S-23, TWO FEET ON EACH SIDE FROM THE POINT OF INTERFERENCE.
  - IF DURING THE COURSE OF CONSTRUCTION IT IS DETERMINED THAT THERE IS LESS THAN FOUR FEET OF COVER OVER THE TOP OF A MAIN LINE OR HOUSE LATERAL V.C.P. SEWER WHICH IS NOT INDICATED ON THE PLANS, THE PIPE SHALL BE ENCASED PER S-23, UNLESS OTHERWISE APPROVED BY THE COUNTY ENGINEER.
  - HOUSE LATERALS TO BE CONSTRUCTED WITH INVERTS AT PROPERTY LINE 4 FEET BELOW CURB GRADE EXCEPT AS NOTED.
  - RESURFACE ALL TRENCHES WITH PAVED AREAS TO MEET L.A. COUNTY ROAD DEPT. OR CALIFORNIA STATE HIGHWAY REQUIREMENTS IN ACCORDANCE WITH PERMITS.
  - FOR ALLOWABLE LEAKAGE TEST SEE NOTE AT LEFT.
  - ALL STATE AND LOCAL TRENCH SAFETY ORDERS WILL BE STRICTLY ENFORCED.
  - 17" OR 18" BRANCHES MAY BE USED FOR CONNECTION TO MAIN LINE SEWER, EXCEPT AS NOTED.
  - WHERE DEPTH OF MAIN LINE IS MORE THAN 10 FEET, PIPE SHALL BE CRADLED, PER S-23, AS SHOWN ON PLANS. IF WIDTH OF TRENCH AT TOP OF PIPE EXCEEDS 3 FEET FOR DEPTHS OF MORE THAN 30 FEET, THE PIPE SHALL BE ENCASED, FOR S-23, INSTEAD OF CRADLED.

NOTE:  
 ROCK MAY BE ENCOUNTERED BELOW THE NATURAL GROUND SURFACE IN TRIUNFO CANYON ROAD AND IN A PORTION OF EACH STREET ADJACENT TO TRIUNFO CANYON ROAD.

COLLECT CHARGES  
 AS INDICATED  
*Robert W. Lambie*

PROFILE, ALIGNMENT AND GRADE OF  
 SANITARY SEWERS PAGE 1  
 TO BE CONSTRUCTED IN  
 TRACT No. 28302

PRIVATE CONTRACT NO. 7946

W.S. 93  
 4 SHEETS, 7 PAGES

SCALE: VERT. 1" = 8' SEPTEMBER, 1967

PREPARED IN THE OFFICES OF  
 McINTIRE & QUIROS INC.  
 670 BOUTWELL PIKE ROAD  
 MONTEREY PARK, CALIFORNIA

40012

By: *Hodge J. Quisenberry*  
 REG. E. E. NO. 15810

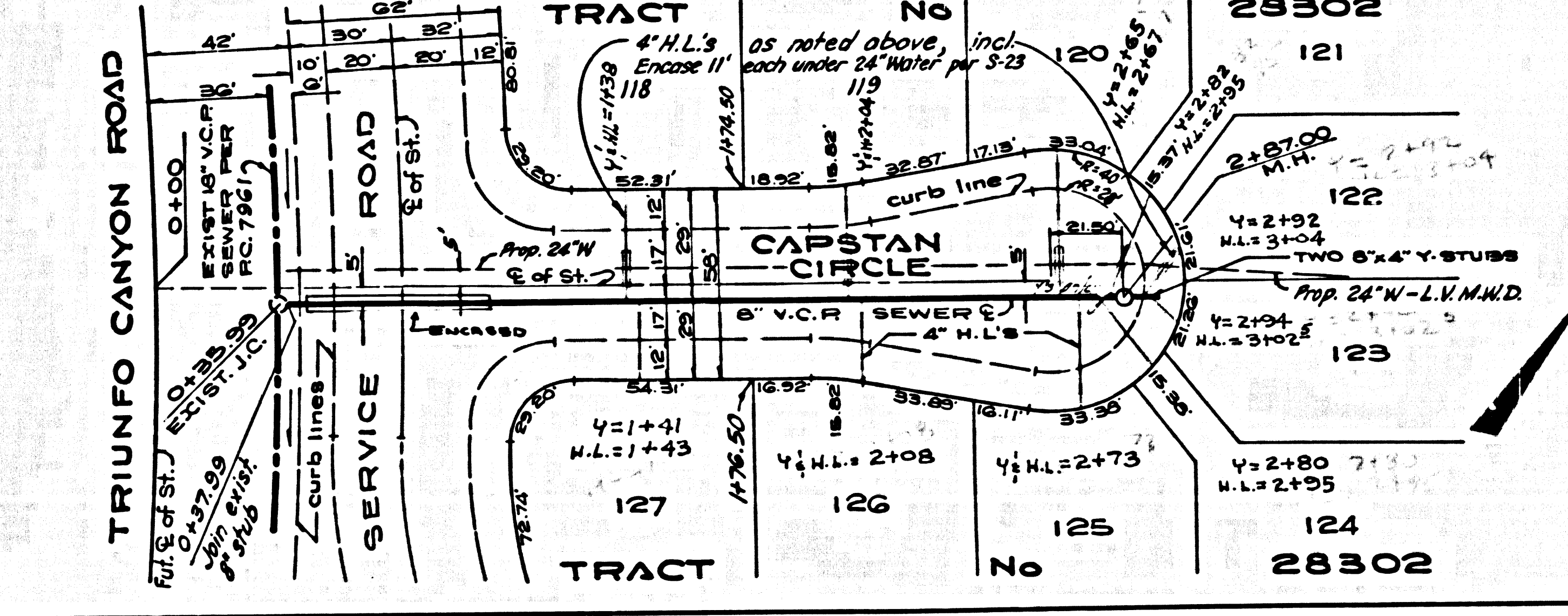
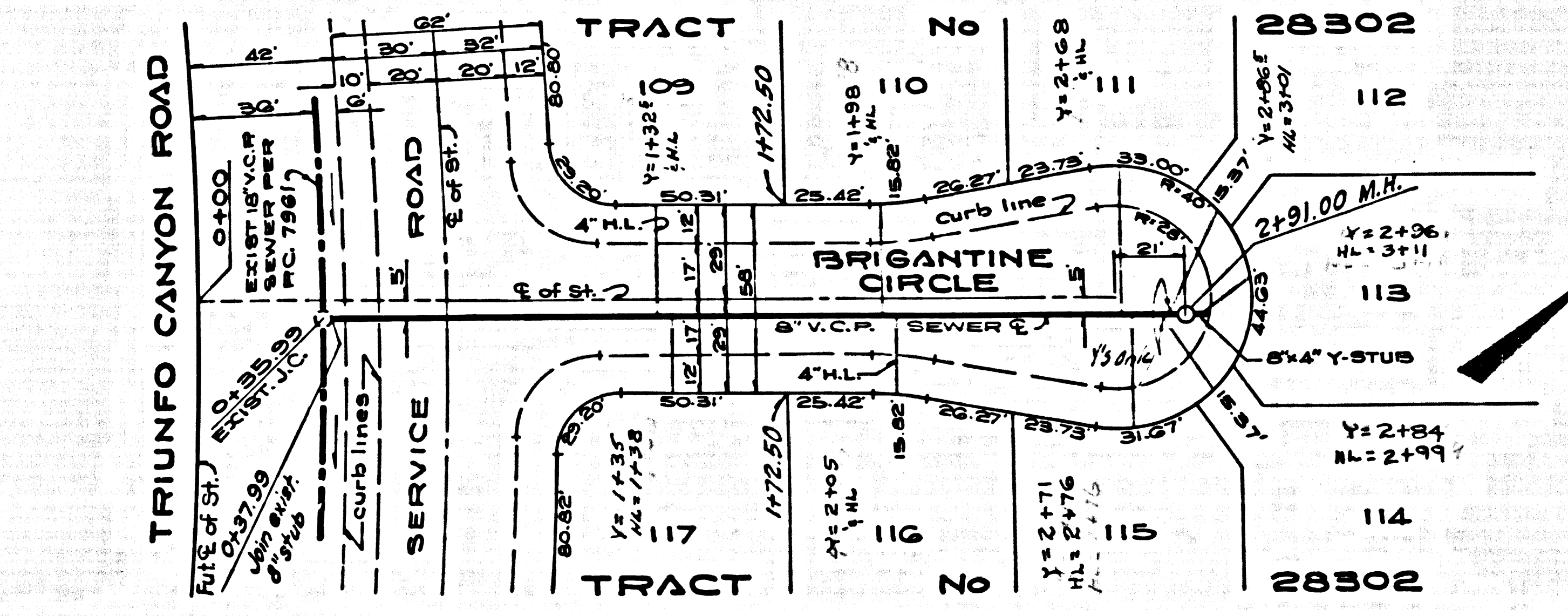
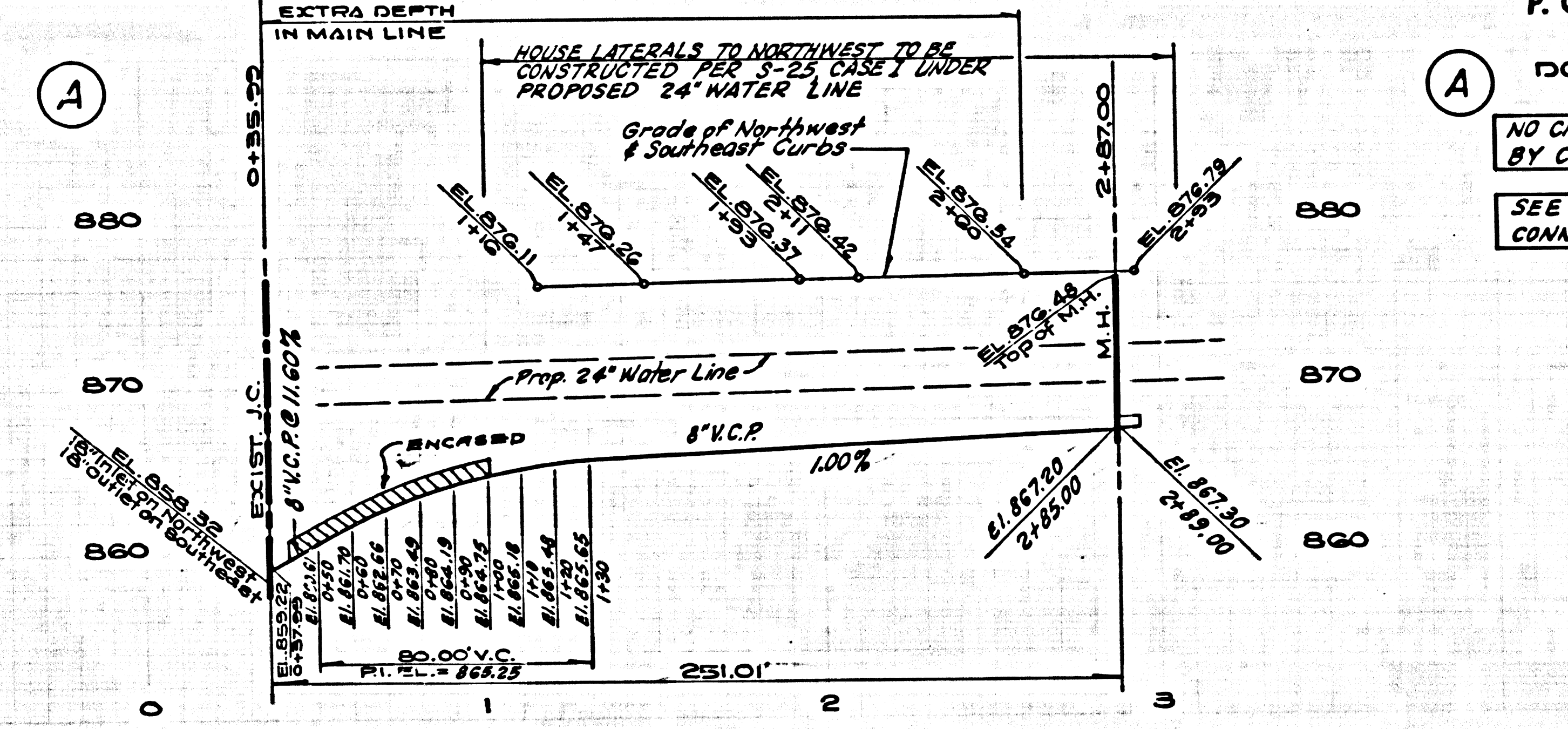
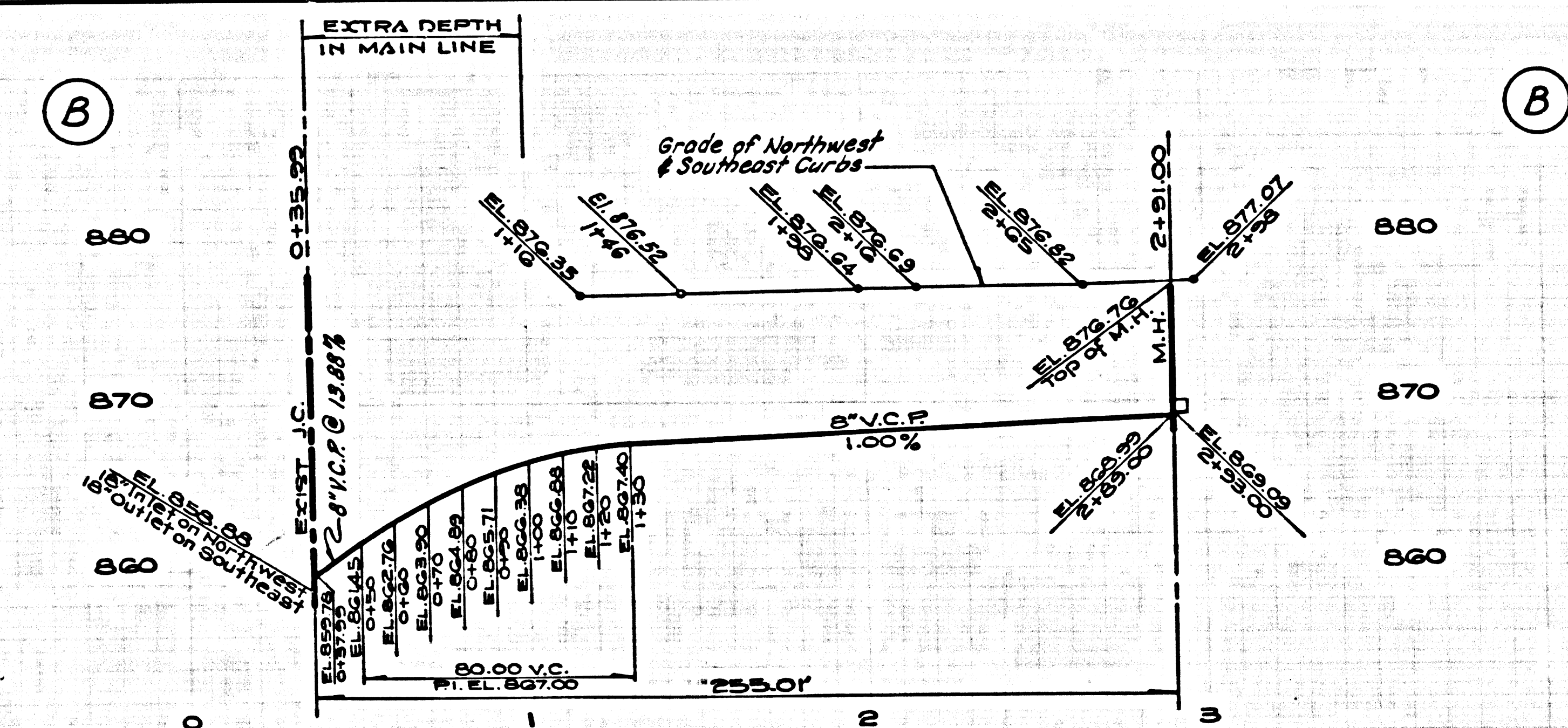
FOR LEGEND SEE PLAN NO. S-1

NOTE:  
 GRADES TO WHICH THIS IMPROVEMENT IS TO BE CONSTRUCTED ARE SHOWN ON PLANS AND PROFILES. GRADE POINTS FOR TOP OF CURBS, CENTER LINE OF STREETS, OR CENTER LINE OF ALLEYS ARE SHOWN BY CIRCLES ON PROFILES. AT ALL POINTS BETWEEN DESIGNATED POINTS THE GRADE SHALL BE ESTABLISHED SO AS TO CONFORM TO A STRAIGHT LINE BETWEEN SAID DESIGNATED POINTS. ELEVATIONS ARE IN FEET ABOVE U.S.C. & G.S. SEA LEVEL DATUM OF 1929. THIS DRAWING AND THE DATA HEREON ARE HEREBY MADE A PART OF THE SPECIFICATIONS. THE WORK SHALL BE CONSTRUCTED ACCORDING TO STANDARD SPECIFICATIONS DATED JULY 22, 1957 ON FILE IN THE OFFICE OF THE COUNTY ENGINEER AND SHALL BE PROSECUTED ONLY IN THE PRESENCE OF THE COUNTY ENGINEER. BEFORE WORK CAN BE STARTED, THE CONTRACTOR MUST OBTAIN A PERMIT TO EXCAVATE IN COUNTY STREETS FROM THE L.A. COUNTY ROAD DEPT., DISTRICT OFFICE NO. 3, AND PAY A FEE TO THE COUNTY ENGINEER, ROOM 309, COUNTY ENGINEERING BUILDING, 100 WEST SECOND STREET, LOS ANGELES, CALIFORNIA. REGIONAL OFFICE, SUPERVISOR TO COVER THE COST OF CONSTRUCTION INSPECTION AND RECORD PLANS. APPROVAL OF THIS PLAN BY THE COUNTY OF LOS ANGELES DOES NOT CONSTITUTE AN REPRESENTATION AS TO THE ACCURACY OF THE LOCATION OF OR THE EXISTENCE OR NON-EXISTENCE OF ANY UNRECORDED UTILITY PIPE, OR STRUCTURE WITHIN THE LIMITS OF THE PROJECT. THIS NOTE APPLIES TO ALL PAGES. IF WORK IS TO BE DONE IN A STATE HIGHWAY, A PERMIT MUST BE OBTAINED FROM THE STATE OF CALIFORNIA, DIVISION OF HIGHWAYS, 150 SOUTH SPRING STREET, LOS ANGELES, CALIFORNIA.

COUNTY OF LOS ANGELES, CALIFORNIA  
 JOHN A. LAMBIE, COUNTY ENGINEER  
 APPROVED BY: *Robert W. Lambie*  
 REGIONAL ENGINEER

CHECKED BY: *Thomas C. Van Hook* 2/16/68  
 REG. C.E. NO. 10663

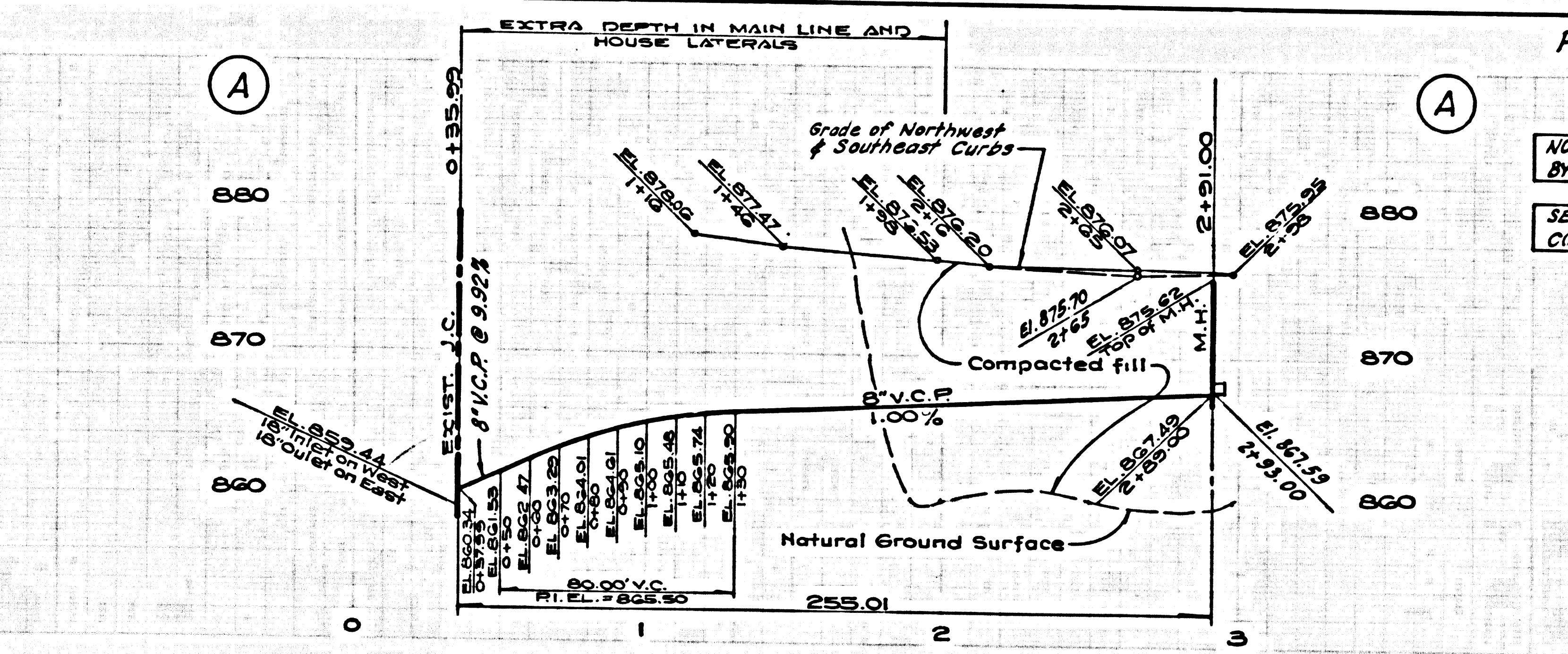
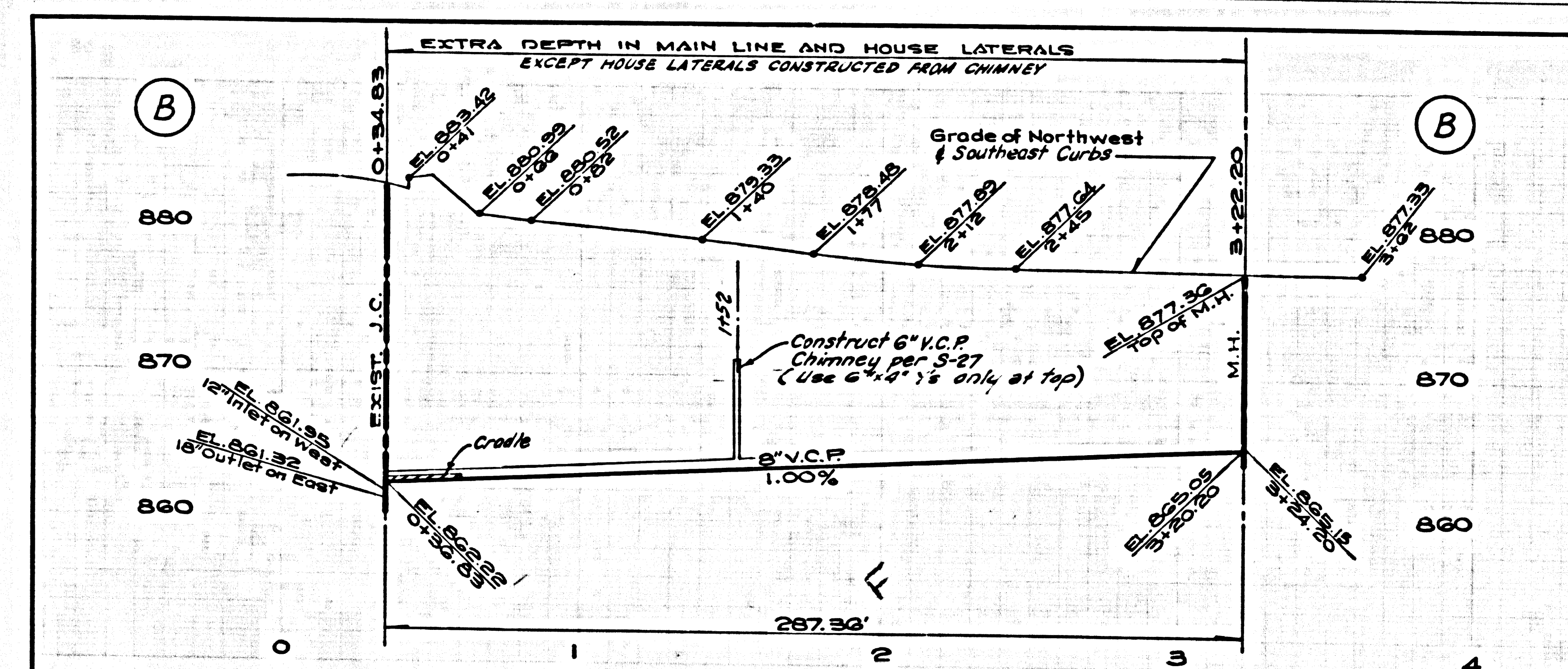
J.N. 0250.02



P.C. 7946 PAGE 2

DOUBLE SCALE  
 NO CHARGE FOR CONNECTION  
 BY COUNTY OF LOS ANGELES  
 SEE L.V.M.W.D. FOR  
 CONNECTION CHARGES

40013



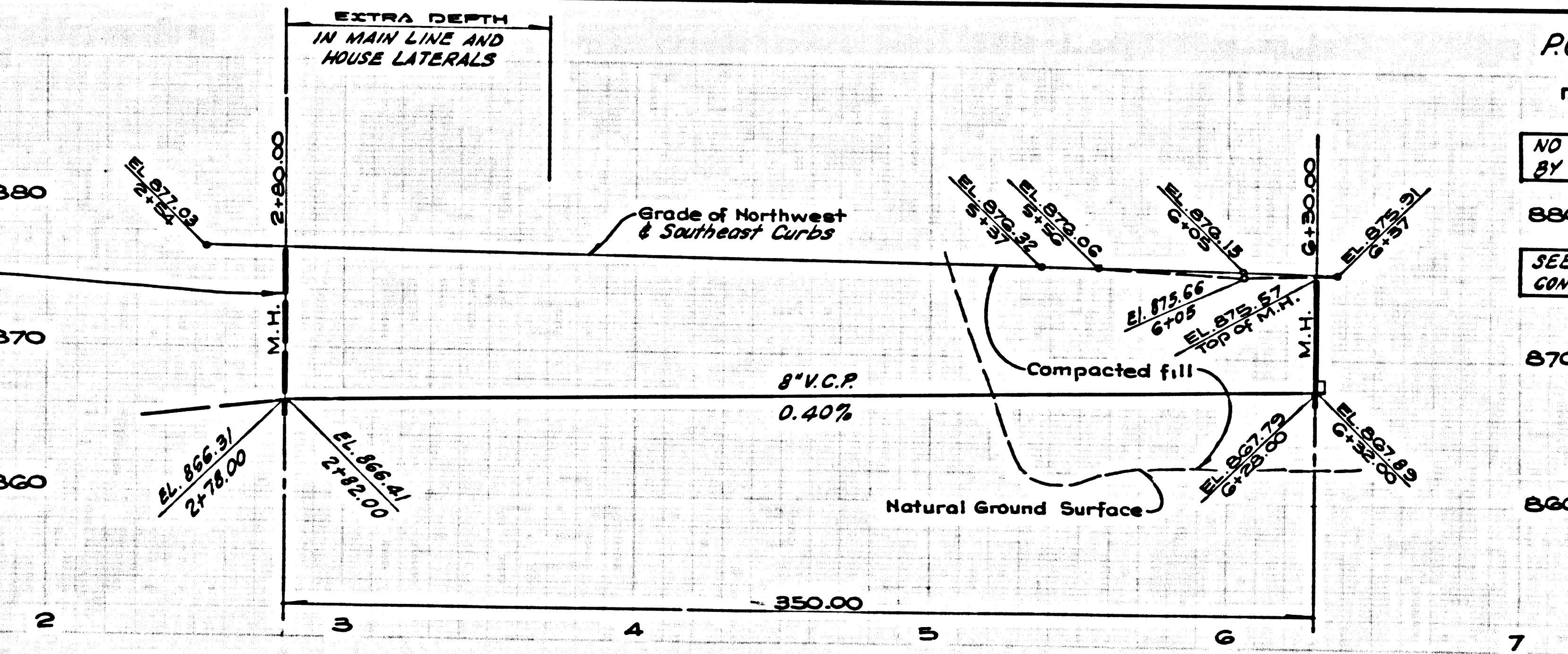
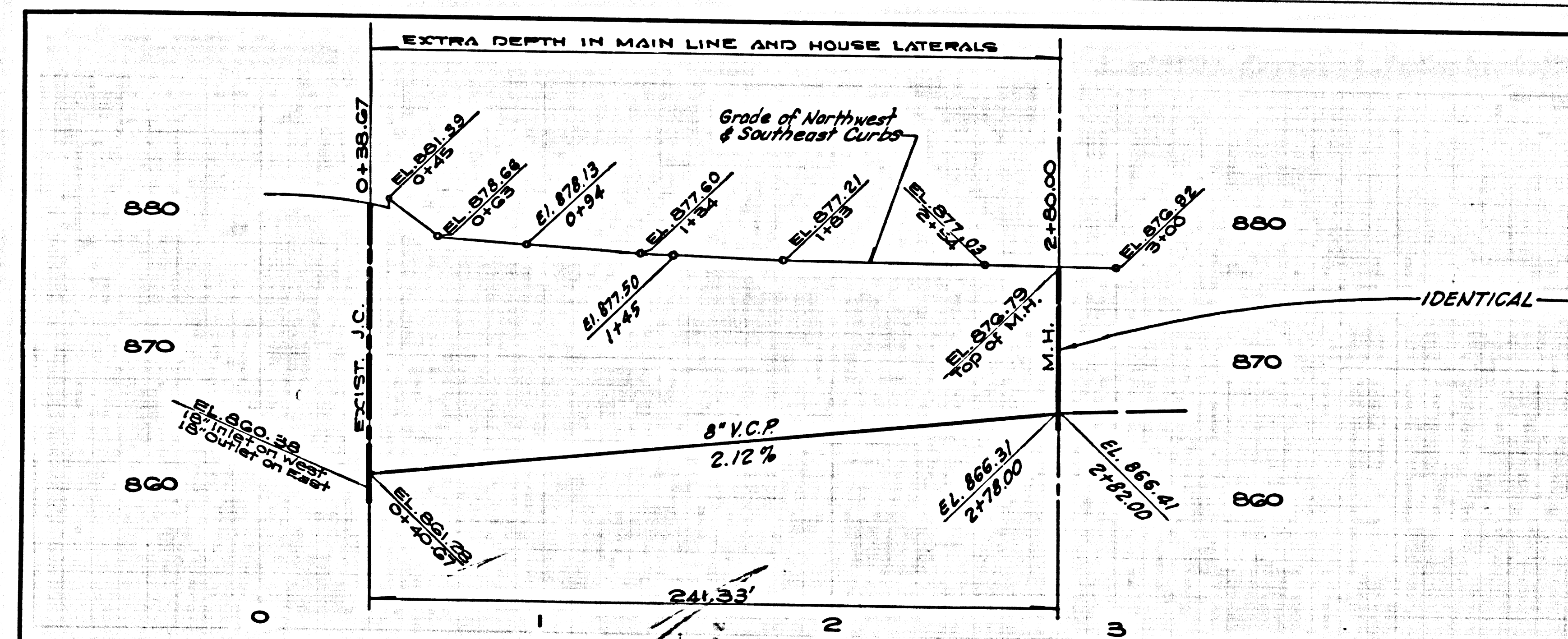
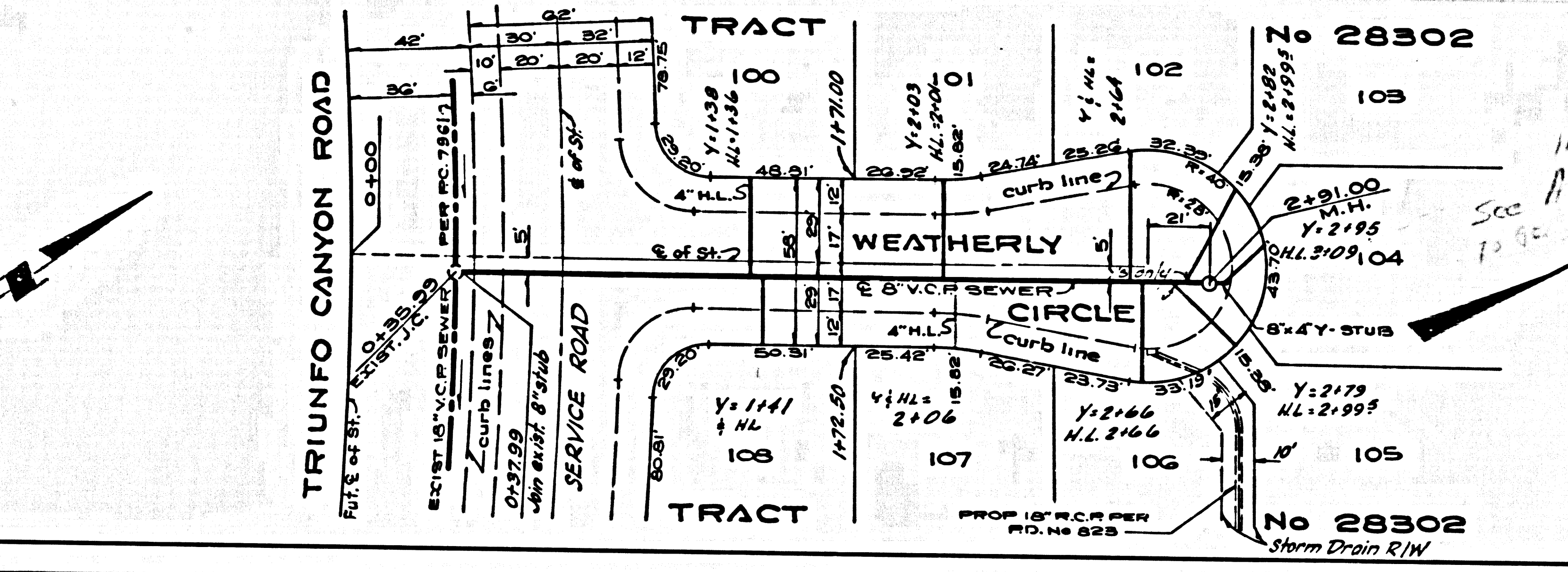
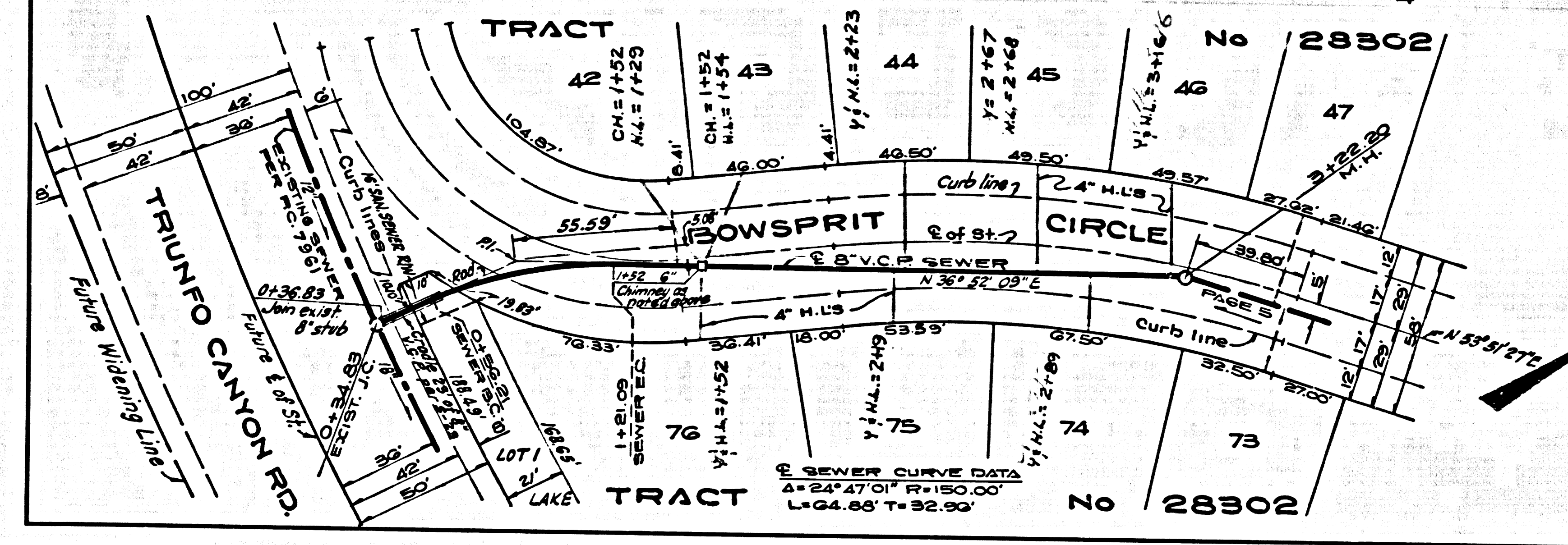
PC. 7946 PAGE 3

DOUBLE SCALE

NO CHARGE FOR CONNECTION BY COUNTY OF LOS ANGELES

SEE L.V.M.W.D. FOR CONNECTION CHARGES

40014



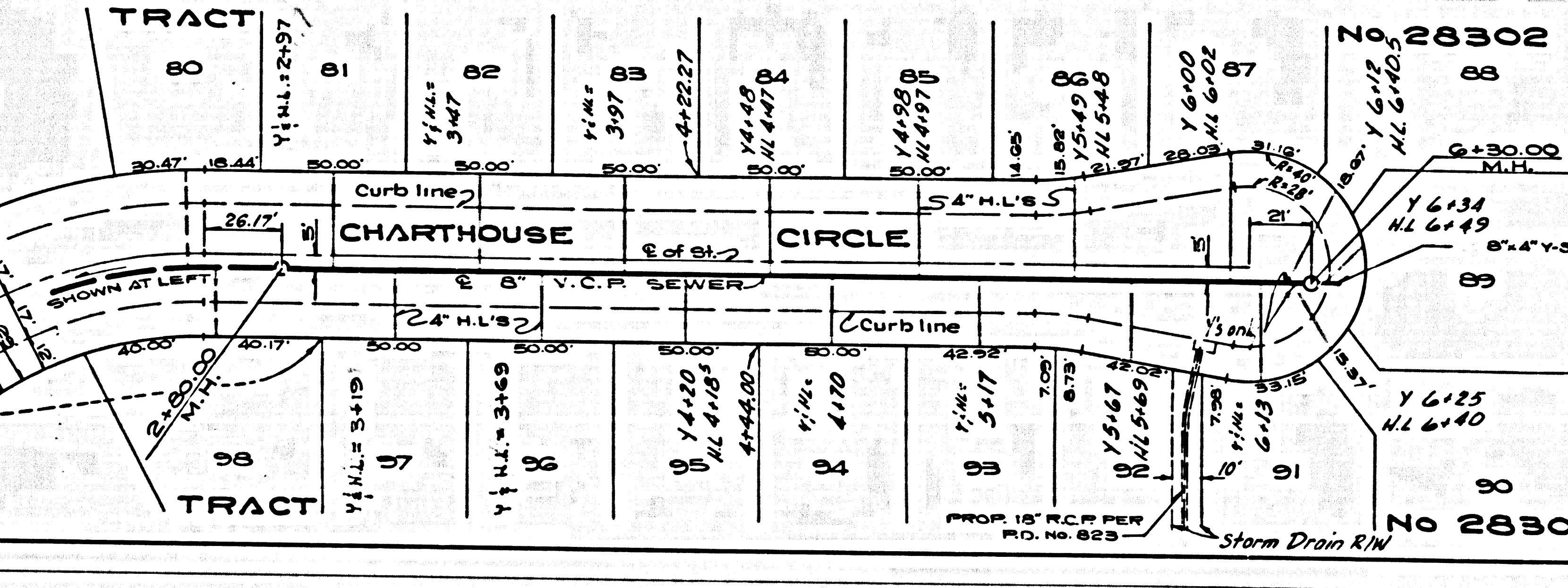
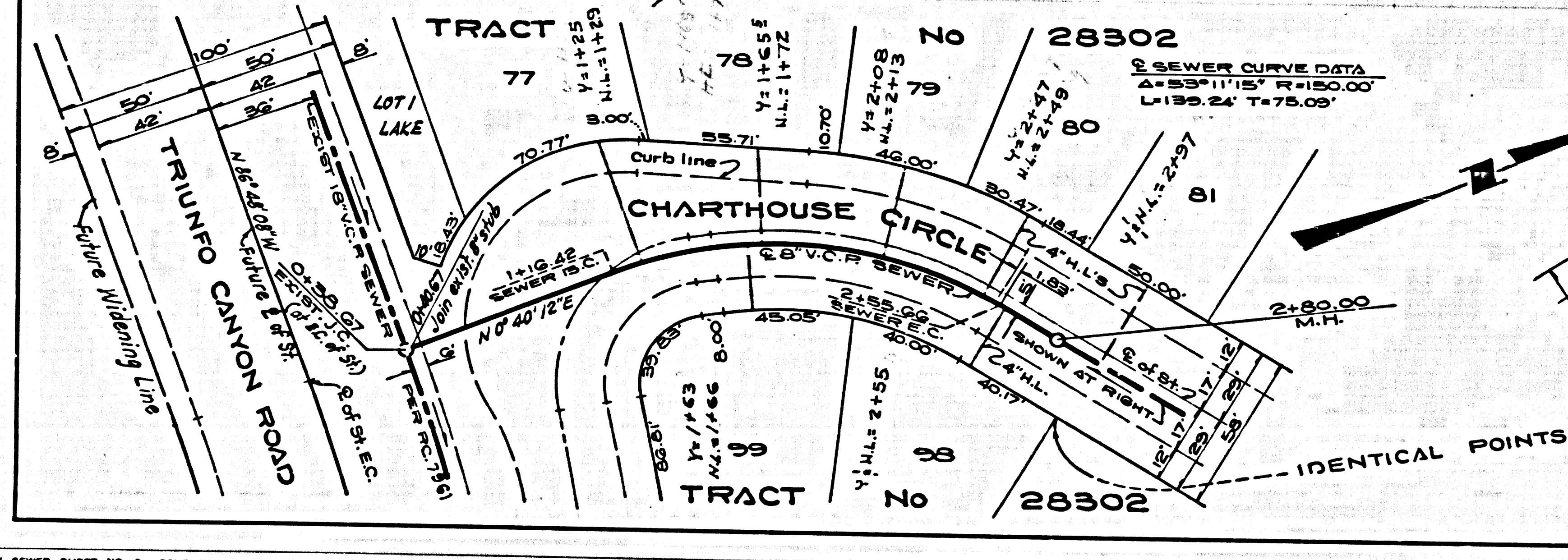
PC. 7946 PAGE 4

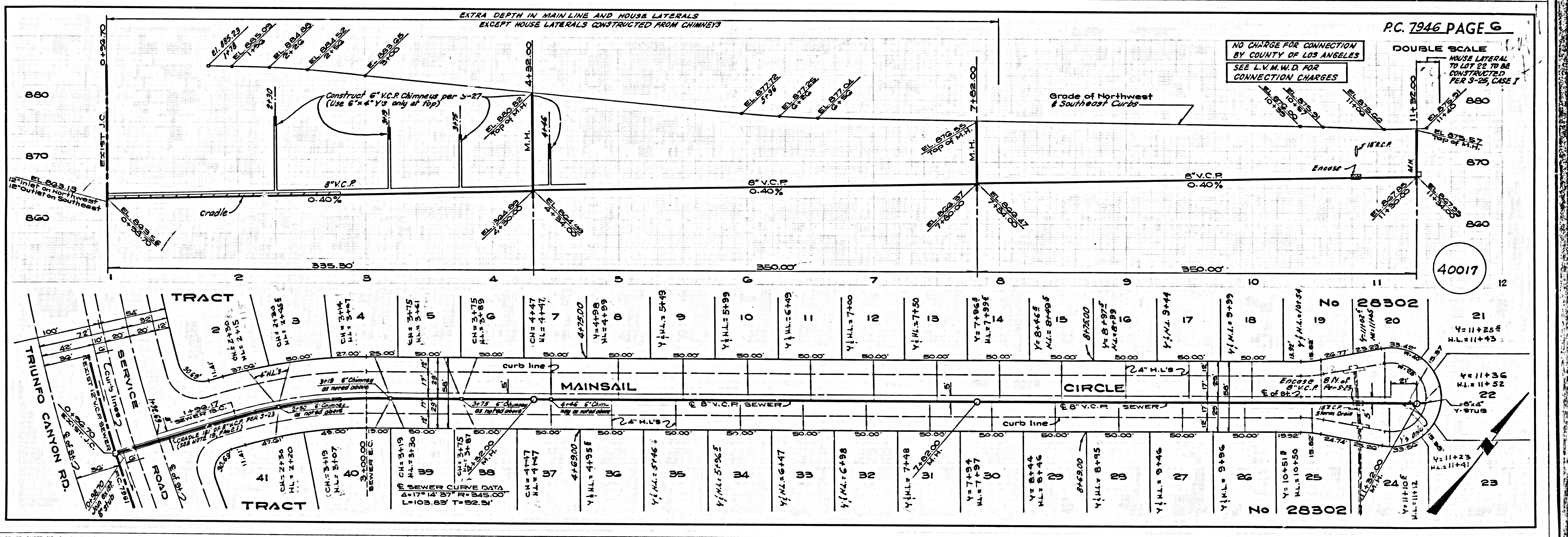
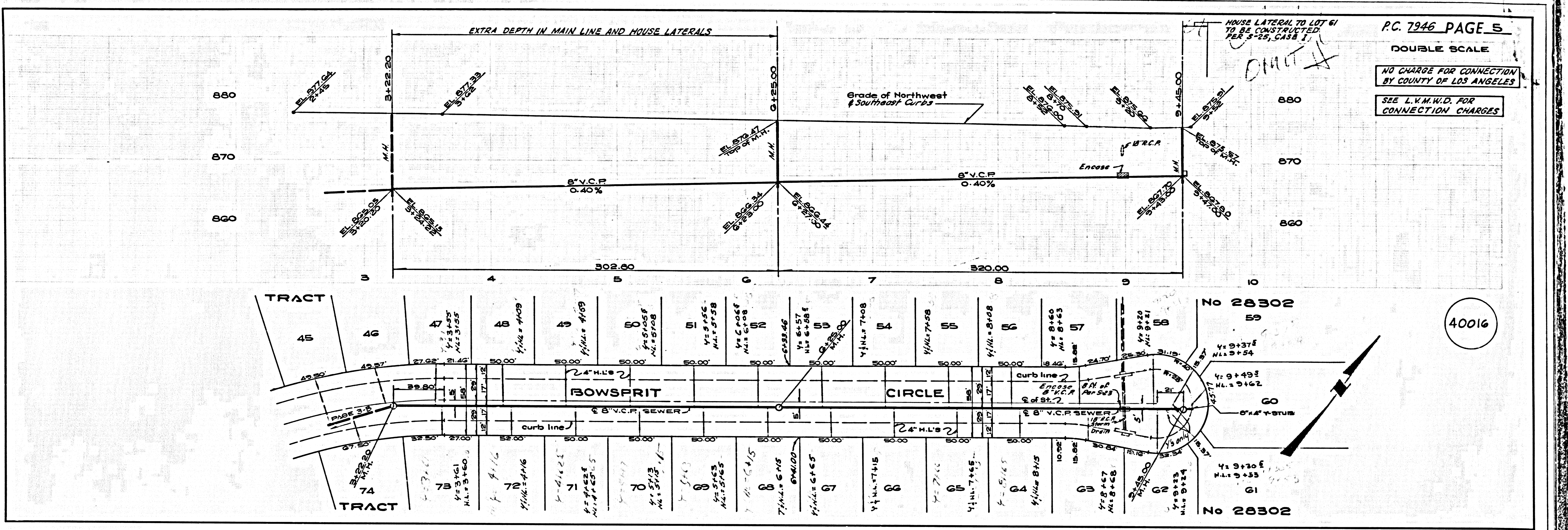
DOUBLE SCALE

NO CHARGE FOR CONNECTION BY COUNTY OF LOS ANGELES

SEE L.V.M.W.D. FOR CONNECTION CHARGES

40015





DOUBLE SCALE

NO CHARGE FOR CONNECTION BY COUNTY OF LOS ANGELES  
SEE LUM.M.D. FOR CONNECTION CHARGES

40018

